



# Connecticut Department of Energy and Environmental Protection



# **Resilient Communities & Businesses:**

## **New Tools to Prevent Pollution from Chemicals**

September 17, 2020

State Emergency Response Commission meeting, Zoom

Connie Mendolia, CT DEEP Pollution Prevention program



Connecticut Department of Energy and Environmental Protection

# CT DEEP P2 project overview

Goal:

Help businesses be resilient to natural hazards and reduce the risk of on-site chemicals causing pollution.

Accidental releases of toxic chemicals have also put communities and emergency responders at risk.



# CT DEEP P2 efforts


## Develop variety of guidance materials for business on:

- reducing chemicals, using BMPs
- increasing safety for workers & the community,
- preventing pollution
- building relationships with local emergency responders



# Chemical Management & Climate Resilience Training

Free, online training – launched Sept 2020




Managing Your Chemicals  
**Can Help You  
Weather the Storm**

Funding for this training was provided by US EPA Pollution  
Prevention Grant Program, FY 2018-2019

**Let's Begin**

Connecticut Department of Energy and Environmental Protection



Connecticut Department of Energy and Environmental Protection

# Sample the Training

<https://www.youtube.com/watch?v=1nwfZ23gulQ&feature=youtu.be>

Let's Look at a Few Highlights (approximately 4 minutes of highlights:

Intro; 00 – 2:01

Pre steps; 6:32

4 Steps: 7:06 – 7:24

Step 4, Build relationships: 22:50 – 23:47



# Videos with Information from CT Businesses

Site-visits showing what changes they are making towards becoming disaster resilient.

- [U.S. Naval Subbase, Groton, CT, Disaster Resiliency - \*Can Your Facility Weather the Storm?\*](#)

Actions include elevating equipment and materials, using floodgates and having a plan of action.

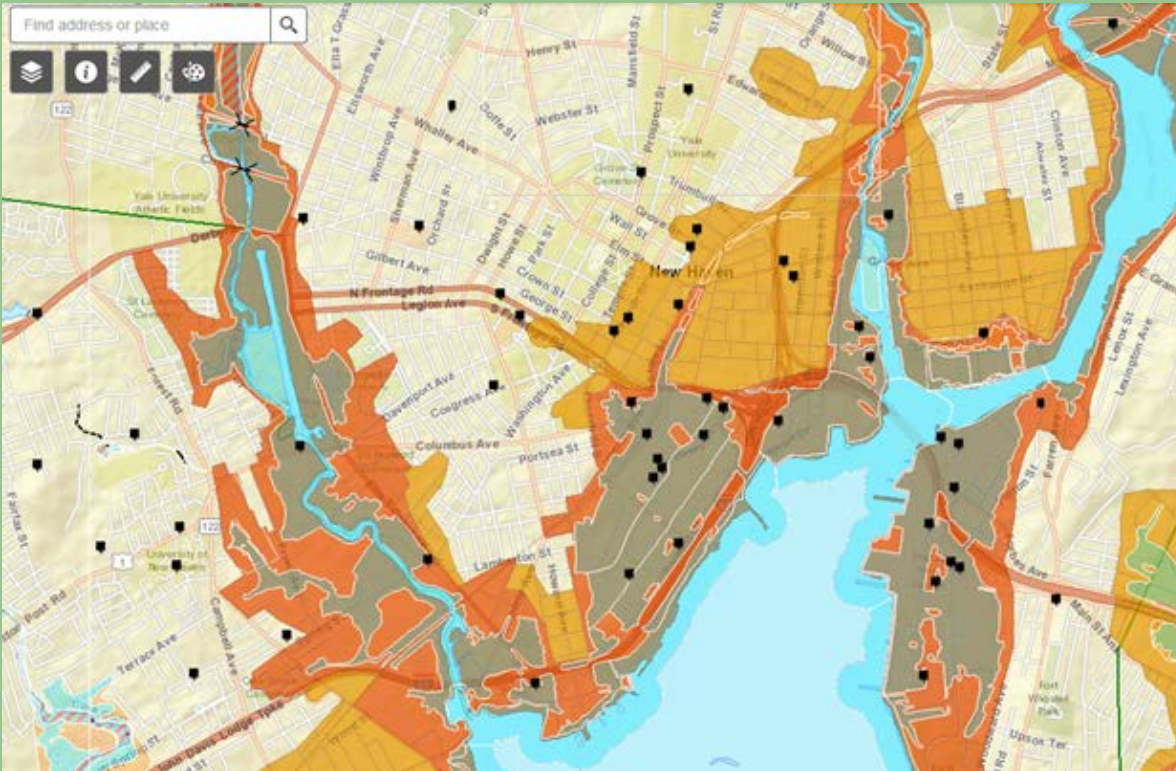
- [Marina and boat repair business located along CT's coast - \*Can Your Business Weather the Storm?\*](#)

Actions include a daily walk-through, connecting with local emergency responders and more.



# CT Toxics Users & Climate Risk Viewer

[Locate address on the map and find out if facility is in flood prone area](#)



- EPCRA Tier II
- RCRA LQGs, SQGs
- TRI
- National Flood Zones
- CT Hurricane Evacuation Zone
- Sea Level Rise

[ct.gov/deep/CTToxicUsersMap](http://ct.gov/deep/CTToxicUsersMap)



Connecticut Department of Energy and Environmental Protection



# DEEP's Outreach Materials for Businesses



## THE RESILIENT 21ST CENTURY BUSINESS:

How Managing Chemicals Can Help Your Business Weather the Storm

Did you know?

**40%** of disaster-struck businesses **NEVER REOPEN**

**25%** of disaster-struck businesses that reopen eventually **FAIL**

**90%** of businesses without a plan **FAIL within 2 YEARS** post-disaster



The average National Flood Insurance Program (NFIP) non-residential flood claim is almost \$90,000. Photo courtesy of The New London Day.

Do you have **hazardous materials, chemicals, or wastes** on site?

If so, then you may already be subject to regulatory requirements.

Extreme weather could put your business, employees, & local community at risk.

That's why it's important to **make your business resilient** in the face of natural disaster.

Here are some tools to help!

**\$1 spent on hazard mitigation = \$6 saved on future disaster costs**  
National Institute of Building Sciences

Building your business was a big investment. Here's what you can do to protect it:

- 1 Understand the risks to your business & community.
- 2 Know which chemicals your business has on site.
- 3 "Floodproof" your storage of chemicals, & train employees on managing on-site chemical risks.



Become a **disaster-resilient, prepared business.**



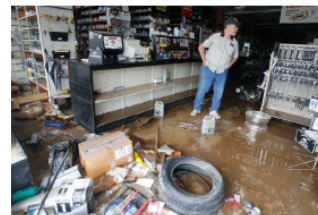
## THE RESILIENT 21ST CENTURY BUSINESS:

How **Retailers & Service Providers** Can Manage Chemical Products to Weather the Storm

You may not realize that some products on your shelves or in your storage areas are **toxic** to humans & can **pollute** the environment.

Extreme weather could put your business & community **at risk.**

Here's how you can make your business **resilient** in the face of natural disaster.



The average National Flood Insurance Program (NFIP) non-residential flood claim is almost \$90,000. Photo courtesy of CNN.

- 1 Understand the risks to your business, employees, customers, & community.
  - 2 Know which products you sell or use that contain chemicals.
  - 3 "Floodproof" your storage of those products.
- Become a disaster-resilient, prepared business.

Consider the chemical products your business uses, stocks, or sells, such as:

- ◆ **Dry Cleaners & Laundromats**
  - Solvents & detergents
  - Spot cleaners
- ◆ **Beauty & Nail Salons**
  - Plasticizers
  - Solvents
  - Pigments & dyes
- ◆ **Hardware Stores**
  - Lawn & garden chemicals
  - Glues & adhesives
  - Road salt & de-icers
  - Paints & stains
  - Lubricants & degreasers
  - Propane tanks
  - Solvents
  - Pesticides
  - Cleaning products
- ◆ **Funeral Homes**
  - Preservative chemicals (formaldehyde, disinfectants, & dyes)
- ◆ **Gyms & Hotels**
  - Pool chemicals
  - Cleaning supplies
  - Winter de-icing chemicals
- ◆ **Landscaping & Pest Control**
  - Lawn chemicals
  - Fertilizers
  - Pesticides
- ◆ **Pharmacies**
  - Pharmaceuticals
  - First Aid items
  - Cleaning supplies
  - Lighter fluid
  - Hair dyes
  - Nail polish & remover

And many more!



# CT DEEP Webpage

## Chemical Management and Climate Resilience

The screenshot shows the DEEP website with the following elements:

- Header:** ct.gov State of Connecticut, Governor Ned Lamont, and a search bar.
- Logo:** Connecticut Energy Environment logo.
- Section Header:** Department of ENERGY & ENVIRONMENTAL PROTECTION.
- Navigation:** Home, About Us, Programs & Services, Publications, Forms, Contact Us.
- Category Tabs:** ENERGY, ENVIRONMENTAL QUALITY, NATURAL RESOURCES, OUTDOOR RECREATION, PURA.
- Left Sidebar:** Pollution Prevention, Individuals/Families, Home and Garden, Business/Industry/Healthcare, Faith Communities, Schools and Universities, State/Local Governments and Non-Profits, Pollution Prevention Main Page, Main Menu.
- Main Content:**
  - Section Header:** Chemical Management and Climate Resilience
  - Text:** TAKE ACTION • BECOME A DISASTER-RESILIENT, PREPARED BUSINESS
  - Icons:** A globe, a circular arrow, and a checkmark in a circle.
  - Section Header:** CT's businesses can be prepared to "weather the storm"
  - Text:** Connecticut was hit with at least 5 major storms plus lesser weather events since 2010. It is important to make your business and property resilient to natural hazards and reduce the risk of on-site chemicals causing pollution. Storm events can result in property damage, loss of inventory, and environmental contamination and liability. Accidental releases of toxic chemicals have also put communities and emergency responders at risk.
  - Text:** Working together, businesses and local emergency officials can increase awareness and take steps to reduce risk and protect human health and safety.
  - Text:** Find out what you can do:
  - Section Header:** Tools, Outreach Materials & Resources for Businesses:
- Main Menu:** Report an ENVIRONMENTAL Concern/Problem, Calendar of Events, Laws and Regulations, Maps and GIS Data.

[https://www.ct.gov/deep/cwp/view.asp?a=2708&q=609596&deepNav\\_GID=1763](https://www.ct.gov/deep/cwp/view.asp?a=2708&q=609596&deepNav_GID=1763)



Connecticut Department of Energy and Environmental Protection



# Regional Natural Hazard Mitigation Plan updates

## NEW INITIATIVES

### Helping Small Businesses Mitigate Impacts of Natural Hazards



*Ct.deep.gov*

#### WHAT IS IT?

In an effort to assist small business with reduction of property damage or loss due to natural hazards, CT DEEP has proposed strategies for towns to implement educational programs with recommendations for best management practices (BMPs) to prevent pollution from chemicals from getting out into the environment.

According to FEMA, 40% of businesses affected by disaster never reopen, and 25% that do reopen fail; other studies show that 90% of businesses fail within two years of being struck by a disaster. Damage during storm events result in property damage, loss of inventory, and environmental contamination and liabilities resulting from chemical releases into the environment.

The sample mitigation objectives for municipalities is to increase awareness by small businesses of any chemicals and toxic products they use, store and/or sell, and to use BMPs to improve safety. On a regional scale, the objectives are to improve chemical safety practices to prevent disruption of economic activity and protect the environment and public health.

Strategies for educational programs include providing information on municipal websites, social media, brochures and posters, or through workshops.

#### REGIONAL SIGNIFICANCE AND LINK TO HAZARD MITIGATION

The benefits of reducing damage to small businesses during a disaster are a reduction in property damage and losses, avoiding expensive cleanups, reducing liability and risk to public health, and a more rapid recovery and continued operations that result in less impacts to the municipality's economic base.

**The municipalities of the Capitol Region can benefit from mitigation actions related to mitigating flood impacts to small businesses.** DEEP has recommended that hazard mitigation plan strategic actions list the municipality as the lead agency, with assistance from CT DEEP, where DEEP would develop information for dissemination. Suggested action priority is on a medium scale, with a completion time frame of one year.

**FOR MORE INFORMATION**

Connie Mendolia  
Department of Energy & Environmental Protection



# Questions?

Connie Mendolia

[Connie.Mendolia@ct.gov](mailto:Connie.Mendolia@ct.gov)

**P2 Chemical Management & Climate  
Resilience webpage:**

<https://portal.ct.gov/DEEP/P2/Chemical-Management-and-Climate-Resilience/Chemical-Management-and-Climate-Resilience>

