



CT PARKS
CONNECTICUT'S OFFICIAL STATE PARKS SITE

Burr Pond State Park, Torrington

384 Burr Mountain Road, Torrington, CT 06790 (population 35,000)



Activities

Biking, Boating/Paddling, Fishing, Hiking, Picnicking, Swimming, Winter activities



Park Visitation

Approximately 86,876 day-use visitors



Facilities

Pedestal Grills, Picnic Shelter (that you can rent), Picnic Tables, Restrooms



Park Website

[Burr Pond State Park](https://www.ctparks.com/parks/burr-pond-state-park)
(CTParks.com)

The concession area is located near the parking lot, Picnic Shelter, picnic tables and restrooms. A small shed at the put-in location is available for operations and limited storage.

Burr Pond State Park is easily accessible from Route 8 (Exit 55; approximately 2 miles). Nearby Paugnut State Forest, and all 1,702 acres, spans across northern Torrington, connecting Burr Pond and Sunny Brook State Parks.



Nestled in the Litchfield Hills, Torrington exudes historic New England charm and offers diverse options for shopping, dining, and recreation. Downtown serves as a vibrant cultural hub, featuring the Warner Theatre, Nutmeg Conservatory, and numerous art galleries. For arts lovers, the Warner Theatre hosts over 200 performances annually, including operas, recitals, dance competitions, and touring theater groups.

Put-in locations for paddlecraft rental services:



Connecticut
Department of Energy &
Environmental Protection



Hopeville Pond State Park, Griswold

929 Hopeville Road, Griswold, CT 06351 (population 3,464)



Activities

Biking, Boating/Paddling, Camping, Fishing, Hiking, Picnicking, Swimming



Park Visitation

Approximately 147,000 day-use visitors and 7,500 campers annually.



Facilities

Boat Launch, Campground with eighty-one (81) wooded/open tent sites and one (1) rustic cabin), Designated Swimming Area (lifeguards not on duty), Picnic Shelter (that you can rent), Pedestal Grills, Picnic Tables, Recreation field open year-round, Restrooms



Park Website

[Hopeville Pond State Park](http://HopevillePondStatePark.CTParks.com)
(CTParks.com)

The concession area is located near the swimming area, parking lot and trailhead of the 13-mile, blue blazed Nehantic Trail. A temporary tent or travel trailer will be needed for operations and on-site storage. Hopeville Pond State Park can be accessed easily from Interstate 395 (Exit 24; approximately 2 miles). The Park was once a major fishing ground for the Mohegan Indians and home to successful woolen mill industry.



Griswold is a scenic town nestled among rolling hills and picturesque rivers, including the Pachaug and Quinebaug. The charming Borough of Jewett City lies where these rivers merge, adding to the town's natural beauty. With its tranquil lakes and outdoor landscapes, Griswold offers a serene retreat surrounded by the peaceful countryside. It's a perfect destination for nature lovers and those seeking a scenic, historical New England experience.

Put-in locations for paddlecraft rental services:



Connecticut
Department of Energy &
Environmental Protection



Indian Well State Park, Shelton

1 Indian Well Road, Shelton, CT 06484 (population 42,805)



Activities

Boating/Paddling, Fishing, Hiking, Picnicking, Swimming



Park Visitation

Approximately 131,000 day-use visitors annually



Facilities

Boat Launch, Designated Swimming Area (lifeguards not on duty), Picnic Shelter (that you can rent), Pedestal Grills, Picnic Tables, Recreational field open year-round, Restrooms



Park Website

[Indian Well State Park](http://IndianWellStatePark.CTParks.com)
(CTParks.com)

The concession area is located near the swimming area, parking lot, and restrooms. The concession area is not located at the nearby boat launch. A temporary tent or travel trailer will be needed for operations and on-site storage.

Indian Well State Park can be accessed easily from Route 8 (Exit 12A; approximately 2.8 miles). Indian Well was named because of the Romeo and Juliet-like Native American legend surrounding the Park's scenic waterfalls and the splash pool at the bottom of the falls.



Shelton is located in a formerly industrial area that is now bustling with activities for residents and visitors alike. From Indian Wells State Park, to the Sports Complex of Connecticut, there is something to do for everyone. Shelton is located along the Housatonic River which offers picturesque sites and a lot of water travel.

Put-in locations for paddlecraft rental services:



Connecticut
Department of Energy &
Environmental Protection





CTPARKS
CONNECTICUT'S OFFICIAL STATE PARKS SITE

Lake Waramaug State Park, Kent

30 Lake Waramaug Road, Kent/New Preston, CT 06777
(combined population 4,410)



Activities

Biking, Boating/Paddling, Camping, Fishing, Hiking, Picnicking, Swimming



Park Visitation

Approximately 50,000 day-use visitors and 10,000 campers annually



Facilities

Car-top Boat Launch, Campground with 67 tent sites and six (6) rustic cabins), Concession Building (located in campground, across the road from the swimming and picnic areas), Designated Swimming Area (lifeguards not on duty), Pedestal Grills, Picnic Tables, Restrooms



Park Website

[Lake Waramaug State Park](http://LakeWaramaugStatePark.CTParks.com)
(CTParks.com)

The concession area is located near the swimming area, campground, concession building and parking lot. A small shed at the put-in location is available for operations and limited storage. Lake Waramaug State Park can be accessed from Route 202; approximately 6 miles). Scenically, few bodies of water in Connecticut can rival the picturesque setting of Lake Waramaug. When vivid fall foliage is mirrored in the unrippled lake surface, the park becomes a mecca for sightseers and photographers.



Kent and New Preston strike a superb balance of old and new, quaint and chic, old-fashioned and avant-garde. Owner-operated shops offer stylish and eclectic goods from both near and far. Comfortable restaurants serve inventive dishes made from local ingredients, while galleries showcase quality contemporary and classic art. From the rolling river with its historic covered bridge to Kent Falls, the Appalachian Trail, and hills made for biking, Kent offers a variety of outdoor activities. With customer service and a smile, along with ample parking throughout the village center, Kent is a wonderful place to spend the day.

Put-in locations for paddlecraft rental services:



Connecticut
Department of Energy &
Environmental Protection





CTPARKS
CONNECTICUT'S OFFICIAL STATE PARKS SITE

Mount Tom State Park, Litchfield

Route 202, Litchfield CT 06759 (population 1,210)



Activities

Boating/Paddling, Fishing, Hiking, Historic, Picnicking, Swimming



Park Visitation

Approximately 33,000 day-use visitors annually



Facilities

Car-top Boat Launch, Concession Building located at the swimming area, Designated Swimming Area (lifeguards not on duty), Pedestal Grills, Picnic Tables, Restrooms



Park Website

[Mount Tom State Park](http://MountTomStatePark.CTParks.com)
(CTParks.com)

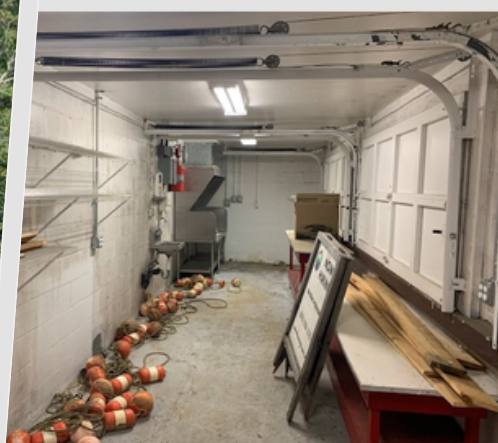
The concession area is located near the swimming area, former concession building, picnic tables and parking lot. A temporary tent or travel trailer will be needed for operations and on-site storage.

The former concession building may be used for operations and on-site storage. Otherwise, a temporary tent or travel trailer will be needed for operations and on-site storage.



Litchfield is a picture-perfect rural town boasting a walkable downtown and stunning foliage each fall. A truly historic town, it was here that George Washington met with Colonel Tallmadge, commander of the 2nd Connecticut Light Dragoons and head of Washington's "secret service" during the Revolutionary War. Litchfield is a fine example of a late 18th-century New England town, with attractive shops and restaurants lining the historic Green. Outdoor activities include hiking, biking, horseback riding, water sports on Bantam Lake, and exploring the White Memorial Conservation Center.

Concession building and put-in location for paddlecraft rental services:



Connecticut
Department of Energy &
Environmental Protection





CTPARKS
CONNECTICUT'S OFFICIAL STATE PARKS SITE

Pattaconk Lake/Reservoir Recreation Area, Cockaponset State Forest, Chester/Haddam

State Forest Road, Chester, CT 06412 (combined population 12,201)



Activities

Boating/Paddling, Camping, Fishing,
Picnicking, Swimming



Park Visitation

Approximately 325,000 day-use
visitors annually across the entire
state forest



Facilities

Camping (youth sites nearby), Car-top Boat
Launch, Designated Swimming Area (lifeguards
not on duty), Pedestal Grills, Restrooms



Park Website

[Cockaponset State Forest](http://CockaponsetStateForest.CTParks.com)
(CTParks.com)

The concession area is located near the swimming area and parking lot. A temporary tent or travel trailer will be needed for operations and on-site storage.

Pattaconk Lake in Cockaponset State Forest can be accessed from Route 9. Connecticut's second largest state forest, Cockaponset, spans over 17,000 acres with parcels of protected land scattered across two counties and eleven towns. With more than 100 miles of hiking trails, pristine Pattaconk Lake, overlooks, streams, and a range of terrain, the park is popular for swimming, hiking, mountain biking, horseback riding, kayaking, and just getting outside.



The town of Haddam has a wonderful balance between the built environment and nature. It is dotted with spectacular Colonial homes, former 19th-century mills, and rolling acres of farmland. The town sits on both sides of the Connecticut River and offers miles of hiking trails and scenic bike rides along Route 154. From the western banks of the Connecticut River, visitors can enjoy a ride on the Essex Steam Train or cruise down the river aboard RiverQuest to watch nesting eagles along the river's shores.

You can also unwind in the charming town of Chester that celebrates art, history, music, theater, crafts, and cuisine — all nestled in the picturesque Connecticut River Valley. Explore art galleries, unique shops, and delicious dining in the village center. Take a scenic ride on the Chester/Hadlyme ferry to Gillette Castle, catch a show at the Norma Terris Theater, bike through Cockaponsett State Forest, swim at Cedar Lake, or discover local heritage at the Chester Museum at the Mill. This is a place where community and conversation thrive.

Put-in locations for paddlecraft rental services:



Connecticut
Department of Energy &
Environmental Protection



Squantz Pond State Park, New Fairfield

178 Shortwoods Road, New Fairfield, CT 06812 (population 13,579)



Activities

Boating/Paddling, Fishing, Hiking, Picnicking, Swimming



Park Visitation

Approximately 99,050 day-use visitors annually



Facilities

Designated Swimming Area (lifeguards on duty), Pedestal Grills, Picnic Tables, Restrooms



Park Website

[Squantz Pond State Park](https://www.ctparks.com/parks/squantz-pond-state-park)
(CTParks.com)

The concession area is located next to the Squantz Pond State Park Boat Launch. A temporary tent or travel trailer will be needed for operations and on-site storage.

Squantz Pond State Park can be accessed from Route 37. Encompassing 172 acres on the shore of Squantz Pond, a natural lake off Candlewood Lake, the park is a rare public space on the otherwise private 75-mile shoreline.



New Fairfield offers an affordable and convenient option for those commuting to New York City. Nestled in scenic green hills and forests, the town boasts a stunning natural setting with limited commercial development, charming restaurants, and minimal traffic. The town's excellent public library hosts programs for all ages, making it a community hub. With a popular lake and pond, New Fairfield provides abundant opportunities for boating and water sports, perfect for both residents and visitors.

Put-in locations for paddlecraft rental services:



Connecticut
Department of Energy &
Environmental Protection

