

## Open Space Report to the Finance, Revenue and Bonding Committee and the State Bond Commission

**April 2026**

### Overview

Section 22a-6v of the General Statutes of Connecticut requires the Commissioner of the Department of Energy & Environmental Protection to submit a report to the joint standing committee of the General Assembly having cognizance of matters relating to finance, revenue and bonding and to the State Bond Commission each month. The report provides information on the acquisition of land or interests in land by the state, a municipality, water company or nonprofit organization using funds authorized for the Open Space and Watershed Land Acquisition Program established under Sections 7-131d and the Recreation and Natural Heritage Trust Program established under Sections 23-73 to 23-79 of the Connecticut General Statutes.

### Open Space and Watershed Land Acquisition Grant Program

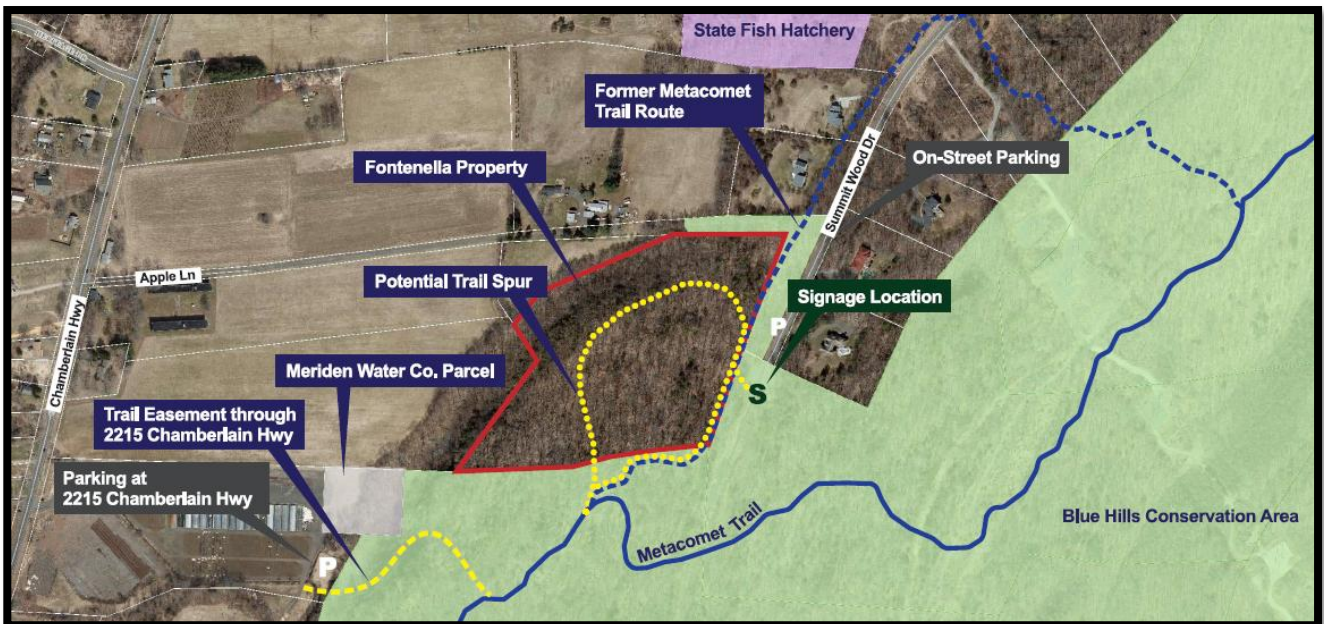
The Open Space and Watershed Land Acquisition Grant Program provides grants to municipalities and private nonprofit land conservation organizations for the acquisition of open space land and to water companies to acquire land to be classified as Class I or Class II watershed land. The State of Connecticut receives a conservation and public access easement on property acquired to ensure that the property will be protected and available to residents of Connecticut as open space in perpetuity. One Open Space and Watershed Land Acquisition Program grant was funded in April 2026. Additional information about the project follows.

Sponsor	Project	Town	Acres Protected
Town of Berlin	Fontanella Property	Berlin	15.74+/-

**Town of Berlin**  
**Fontanella Property, Berlin**  
**90+/- Acres**



This 15.74-acre property has an address of 0 Chamberlain Highway in South Kensington. It is contiguous to the Town's 420-acre Blue Hills Conservation Area. The public can park at the Summit Wood Drive terminus to access the scenic loop trail on the property, which will connect to the Metacomet Trail, southerly of the subject. This acquisition expands the Town's Blue Hills Conservation Area with additional scenic traprock ridgeline along the Metacomet Trail and is part of a larger open space corridor from DEEP's Hatchery Brook Conservation Area to the north, through Berlin and into Meriden.



## **Recreation and Natural Heritage Trust Program**

The Recreation and Natural Heritage Trust Program is the State of Connecticut's primary program for the acquisition of lands for the beneficial use and enjoyment of the public as additions to the State's system of parks, forests, wildlife, fisheries and natural resource management areas. The program acquires land that represents the ecological diversity of Connecticut, including natural features such as rivers, mountainous areas, coastal systems and their natural areas, in order to ensure the conservation of such land for recreational, scientific, educational, cultural and aesthetic purposes. There were no Recreation and Natural Heritage Trust Program closings in April 2026.