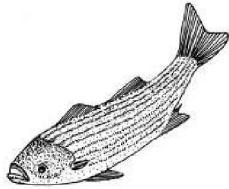


Connecticut Coastal Access Guide

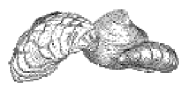
Stewart B. McKinney National Wildlife Refuge-Sheffield Island Unit
Sheffield Island Norwalk, CT



Site Description: The Sheffield Island Unit is a 67-acre island owned by the U.S. Fish and Wildlife Service with the potential to support nesting wading birds. A portion of the island is also owned by the Norwalk Seaport Association which maintains a historic lighthouse and facilitates tours. The Seaport Association and the U.S. Fish and Wildlife Service cooperatively built a nature trail with observation deck. Gulls nest along the rocky shoreline in the summer and surrounding waters provide habitat for wintering waterfowl. The Sheffield Island Lighthouse is maintained and operated seasonally as a museum by the Norwalk Seaport Association. Public ferry at Hope Dock, 7 Water Street (May-Sept), call 203-838-9744 for info. The Norwalk Seaport Association provides transportation during the summer from the Maritime Aquarium to Sheffield Island for a fee. For more information regarding this site including fees, please visit the Norwalk Seaport Association website at www.seaport.org.

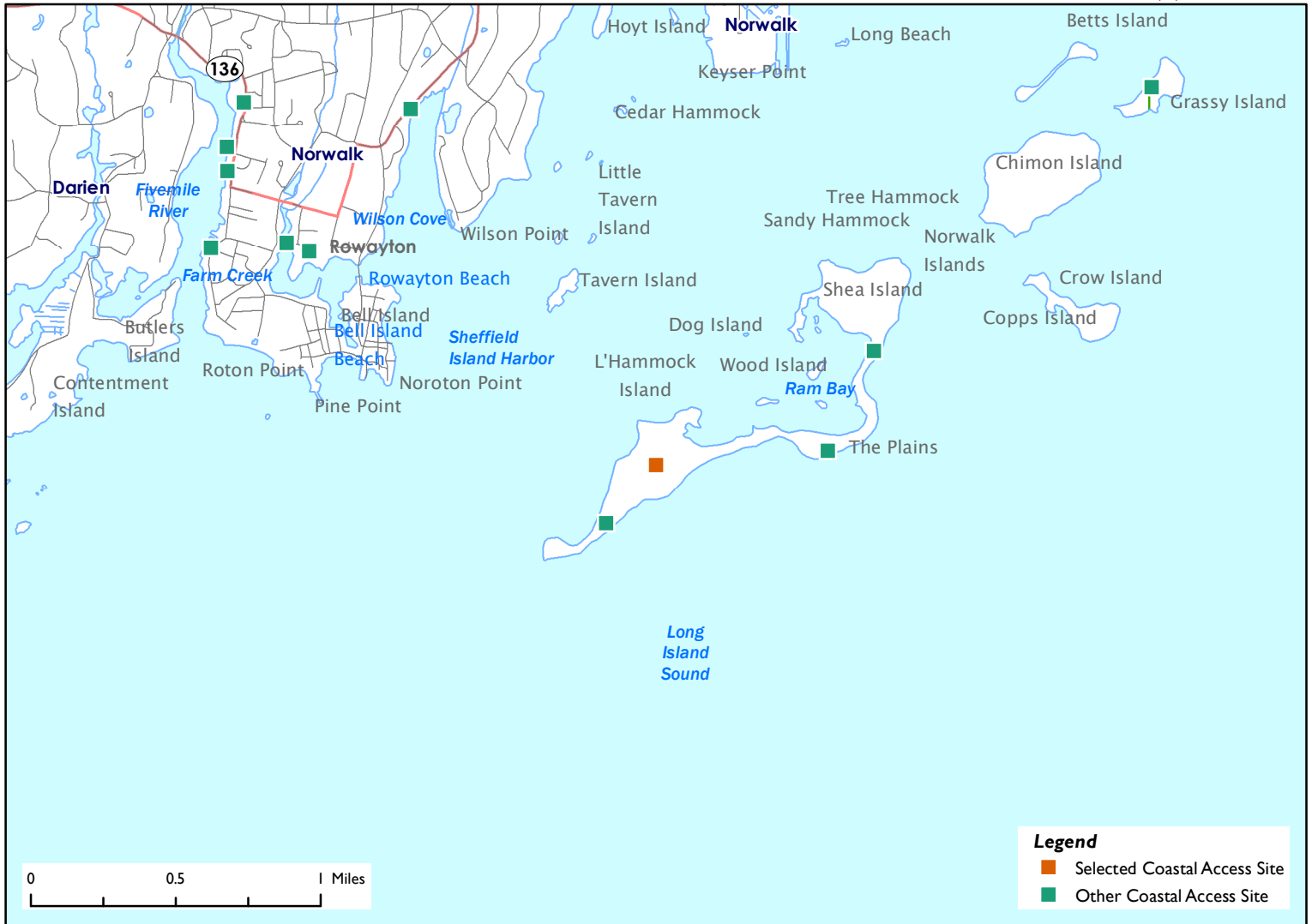


Activities			
Bird & Wildlife	YES	Supervised Swimming	NO
Crabbing	NO	Unsupervised Swimming	NO
Fishing	NO	SCUBA Diving	NO
Shellfishing	NO	Historic/Cultural Interest	NO
Trails	YES	Waterfowl Hunting	NO
Walkways	NO		
Facilities			
Access Pier	NO	Handicapped Access	NO
Boat Launch Ramp	NO	Nature Center/Museum	NO
Car-top Boat Access	NO	Picnic Area	NO
Camping	NO	RV Camping	NO
Food Concession	NO	Sanitary Facilities (Seasonal)	YES
Environmental Setting			
Bluff, Escarpment	NO	On Long Island Sound	YES
Harbor Setting	NO	Rocky Shore	YES
Intertidal Flat	NO	Sandy Beach	NO
Island	YES	Tidal River	NO
Tidal Wetland	NO	Lighthouse	YES
Parking: None		Fee: NO	



Connecticut Coastal Access Guide

Stewart B. McKinney National Wildlife Refuge-Sheffield Island Unit
Sheffield Island Norwalk, CT



Latitude: 41.051804 **Longitude:** -73.415747

Directions:

See above description for different transportation options to Sheffield Island.



Additional Site Information:

Town of Old Lyme
52 Lyme St
Old Lyme, CT 06371

General Questions or Comments:

Land and Water Resources Division
Phone: (860) 424-3019
Email: coastal.access@ct.gov
www.ct.gov/deep



CONNECTICUT DEPARTMENT OF
ENERGY & ENVIRONMENTAL PROTECTION
79 ELM STREET
HARTFORD, CT 06106-5127

EXPLORE CONNECTICUT'S SHORE



Updated: May 2022