

# Connecticut Coastal Access Guide

Eastern Point Beach

1 Beach Pond Road Groton, CT 06340



**Legend**

- Selected Coastal Access Site
- Other Coastal Access Site

**Site Description:** Eastern Point Beach is a small family-oriented beach at the mouth of the Thames River near the University of Connecticut's Avery Point campus. The site offer showers, picnic tables, concession stand and playground. Shallow water depths along the beach and seasonal supervised swimming also make this beach a favorite for families. Seasonal parking stickers are available for purchase on an annual basis. A daily parking fee is also an option.



Activities			
	<b>YES</b>		<b>YES</b>
	<b>NO</b>		<b>YES</b>
	<b>YES</b>		<b>NO</b>
	<b>NO</b>		<b>NO</b>
	<b>NO</b>		<b>NO</b>
	<b>YES</b>		
Facilities			
	<b>NO</b>		<b>YES</b>
	<b>NO</b>		<b>NO</b>
	<b>NO</b>		<b>YES</b>
	<b>NO</b>		<b>NO</b>
	<b>YES</b>		<b>YES</b>
Environmental Setting			
	<b>NO</b>		<b>YES</b>
	<b>NO</b>		<b>YES</b>
	<b>NO</b>		<b>YES</b>
	<b>NO</b>		<b>YES</b>
	<b>NO</b>		<b>NO</b>
<b>Parking:</b>	Parking Lot		<b>Fee:</b> YES



CONNECTICUT DEPARTMENT OF  
ENERGY & ENVIRONMENTAL PROTECTION  
79 ELM STREET  
HARTFORD, CT 06106-5127

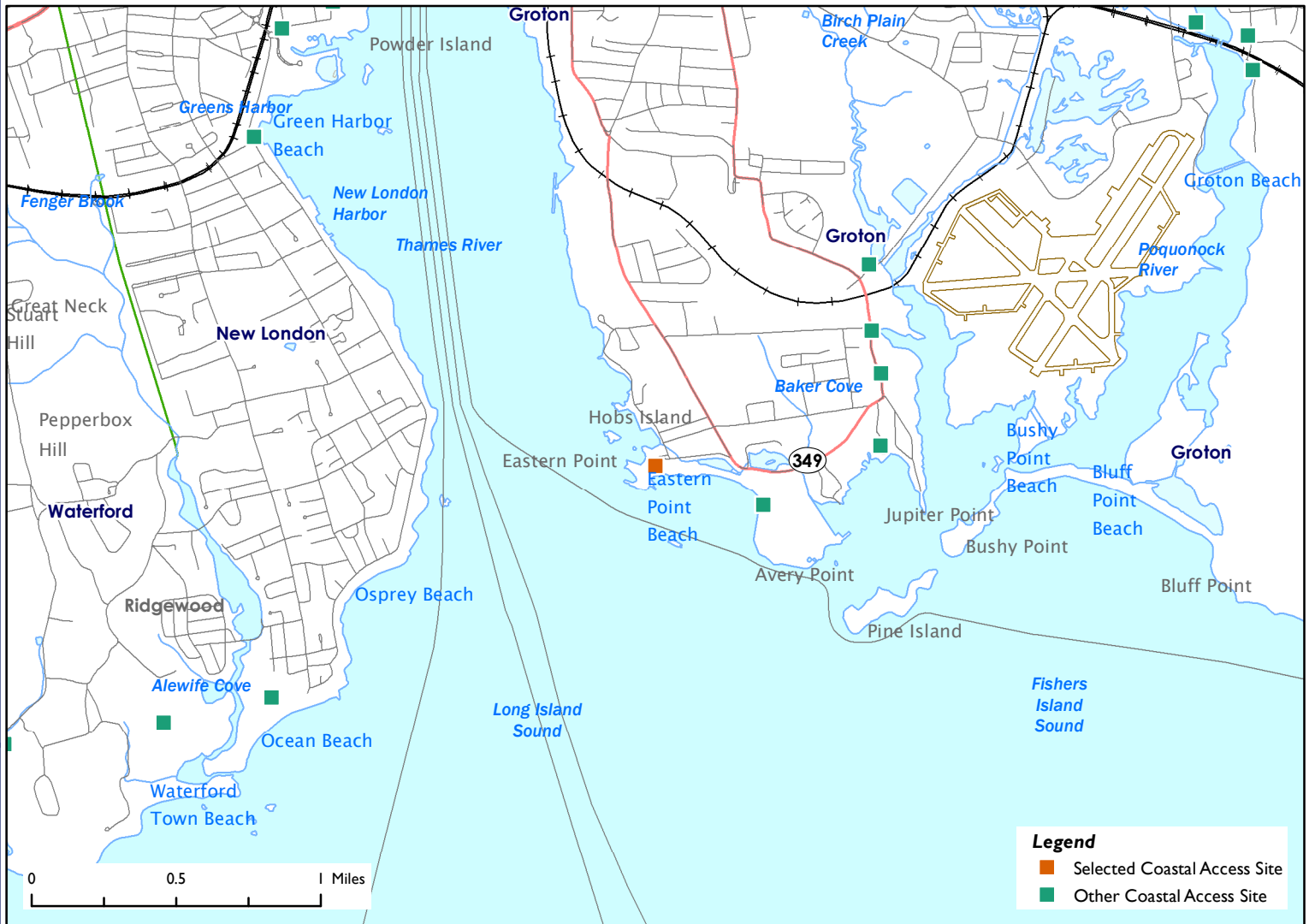
**EXPLORE CONNECTICUT'S SHORE**



# Connecticut Coastal Access Guide

Eastern Point Beach

I Beach Pond Road Groton, CT 06340



**Latitude:** 41.320198 **Longitude:** -72.073417

### Directions:

From the East: Take I-95 South to the Clarence B Sharp Highway/Route 349 South which is exit 87, follow for 1.8 miles. Stay straight onto Brandegee Avenue, continue for 0.5 miles. Brandegee Avenue becomes Shennecossett Road, follow for 1.7 miles. Turn slight right onto Eastern Point Road then a slight left onto Beach Pond Road.

From the West: Take I-95 North to exit 85, which is US-1 N, Thames Street/Downtown Groton exit. Take the ramp to Thames Street. Stay straight to go onto Bridge Street. Bridge Street becomes Thames Street. Turn slight right onto Eastern Point Road. Turn sharp right onto Beach Pond Road.



### Additional Site Information:

City of Groton  
295 Meridian St  
Groton, CT 06340  
<http://cityofgroton.com>

### General Questions or Comments:

Land and Water Resources Division  
Phone: (860) 424-3019  
Email: [coastal.access@ct.gov](mailto:coastal.access@ct.gov)  
[www.ct.gov/deep](http://www.ct.gov/deep)



CONNECTICUT DEPARTMENT OF  
ENERGY & ENVIRONMENTAL PROTECTION  
79 ELM STREET  
HARTFORD, CT 06106-5127

**EXPLORE CONNECTICUT'S SHORE**



Updated: May 2022