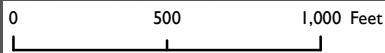


Connecticut Coastal Access Guide

UCONN-Avery Point

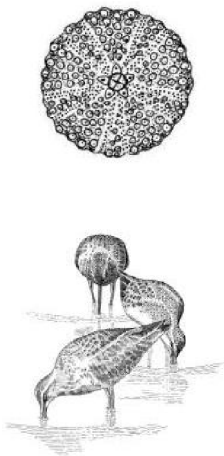
1084 Shennecossett Road Groton, CT 06340



Legend

- Orange square: Selected Coastal Access Site
- Green square: Other Coastal Access Site

Site Description: Located at the mouth of the Thames River, this 77 acre branch of the University of Connecticut offers sweeping views of Long Island Sound. The campus contains buildings that were once part of a large waterfront estate. This site is best suited for walking and provides views of Fishers Island Sound, New London Ledge Lighthouse and the Thames River.



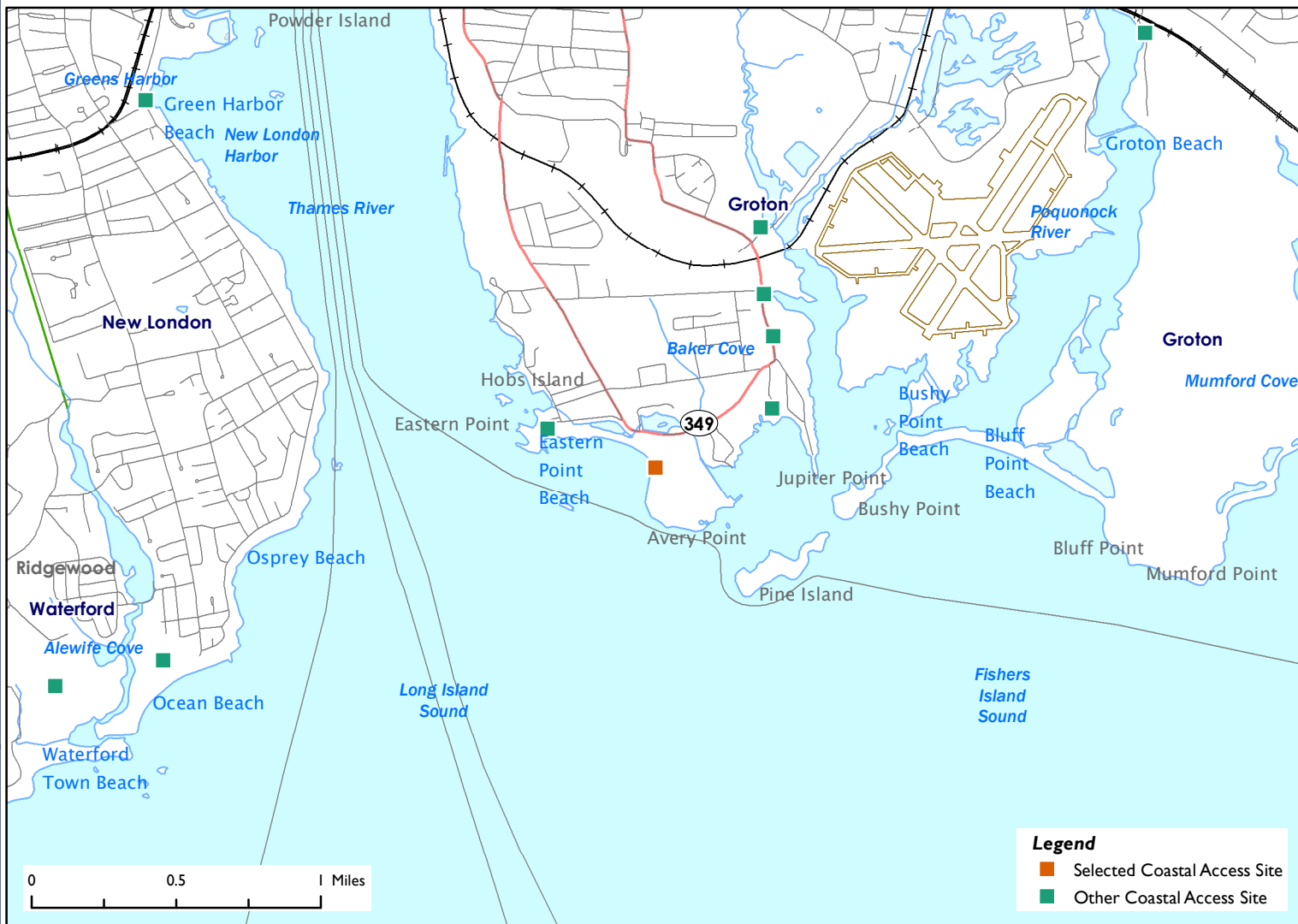
| Activities | | | |
|-----------------------------|-----|----------------|-----|
| | NO | | NO |
| | NO | | NO |
| | YES | | NO |
| | NO | | NO |
| | NO | | NO |
| | YES | | |
| Facilities | | | |
| | NO | | YES |
| | NO | | NO |
| | NO | | YES |
| | NO | | NO |
| | NO | | NO |
| Environmental Setting | | | |
| | NO | | YES |
| | NO | | YES |
| | NO | | NO |
| | NO | | NO |
| | NO | | YES |
| Parking: Parking Lot | | Fee: NO | |



Connecticut Coastal Access Guide

UConn-Avery Point

1084 Shennecossett Road Groton, CT 06340



Latitude: 41.318216 **Longitude:** -72.066252

Directions:

From the East: Take I-95 South to exit 87 to Route 349 South on the left for 1.8 miles. Stay straight to go onto Brandegee Avenue for 0.5 miles. Brandegee Avenue becomes Shennecossett Road, follow for 1.7 miles. End at 1084 Shennecossett Road.

From the West: Take I-95 North to merge onto Clarence B Sharp Hwy/Route 349. Stay straight onto Brandegee Avenue. Brandegee Avenue becomes Shennecossett Road. End at 1084 Shennecossett Road.



Additional Site Information:

University of Connecticut-Avery Point
1084 Shennecossett Road
Groton, CT 06340
<http://www.averypoint.uconn.edu>

General Questions or Comments:

Land and Water Resources Division
Phone: (860) 424-3019
Email: coastal.access@ct.gov
www.ct.gov/deep



CONNECTICUT DEPARTMENT OF
ENERGY & ENVIRONMENTAL PROTECTION
79 ELM STREET
HARTFORD, CT 06106-5127

EXPLORE CONNECTICUT'S SHORE



Updated: May 2022