

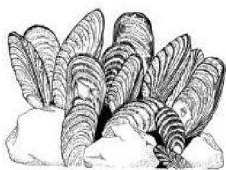
# Connecticut Coastal Access Guide

South Cove Causeway

Rt 154 over South Cove Old Saybrook, CT 06475



**Site Description:** One can enjoy exceptional views of the Connecticut River and Long Island Sound from this site.



### Activities

Bird & Wildlife	<b>YES</b>	Supervised Swimming	<b>NO</b>
Crabbing	<b>YES</b>	Unsupervised Swimming	<b>NO</b>
Fishing	<b>YES</b>	SCUBA Diving	<b>NO</b>
Shellfishing	<b>NO</b>	Historic/Cultural Interest	<b>YES</b>
Trails	<b>NO</b>	Waterfowl Hunting	<b>NO</b>
Walkways	<b>YES</b>		

### Facilities

Access Pier	<b>NO</b>	Handicapped Access	<b>NO</b>
Boat Launch Ramp	<b>NO</b>	Nature Center/Museum	<b>NO</b>
Car-top Boat Access	<b>NO</b>	Picnic Area	<b>NO</b>
Camping	<b>NO</b>	RV Camping	<b>NO</b>
Food Concession	<b>NO</b>	Sanitary Facilities (Seasonal)	<b>NO</b>

### Environmental Setting

Bluff, Escarpment	<b>NO</b>	On Long Island Sound	<b>NO</b>
Harbor Setting	<b>NO</b>	Rocky Shore	<b>NO</b>
Intertidal Flat	<b>YES</b>	Sandy Beach	<b>NO</b>
Island	<b>NO</b>	Tidal River	<b>YES</b>
Tidal Wetland	<b>YES</b>	Lighthouse	<b>NO</b>

**Parking:** On street

**Fee:** NO



CONNECTICUT DEPARTMENT OF  
ENERGY & ENVIRONMENTAL PROTECTION  
79 ELM STREET  
HARTFORD, CT 06106-5127

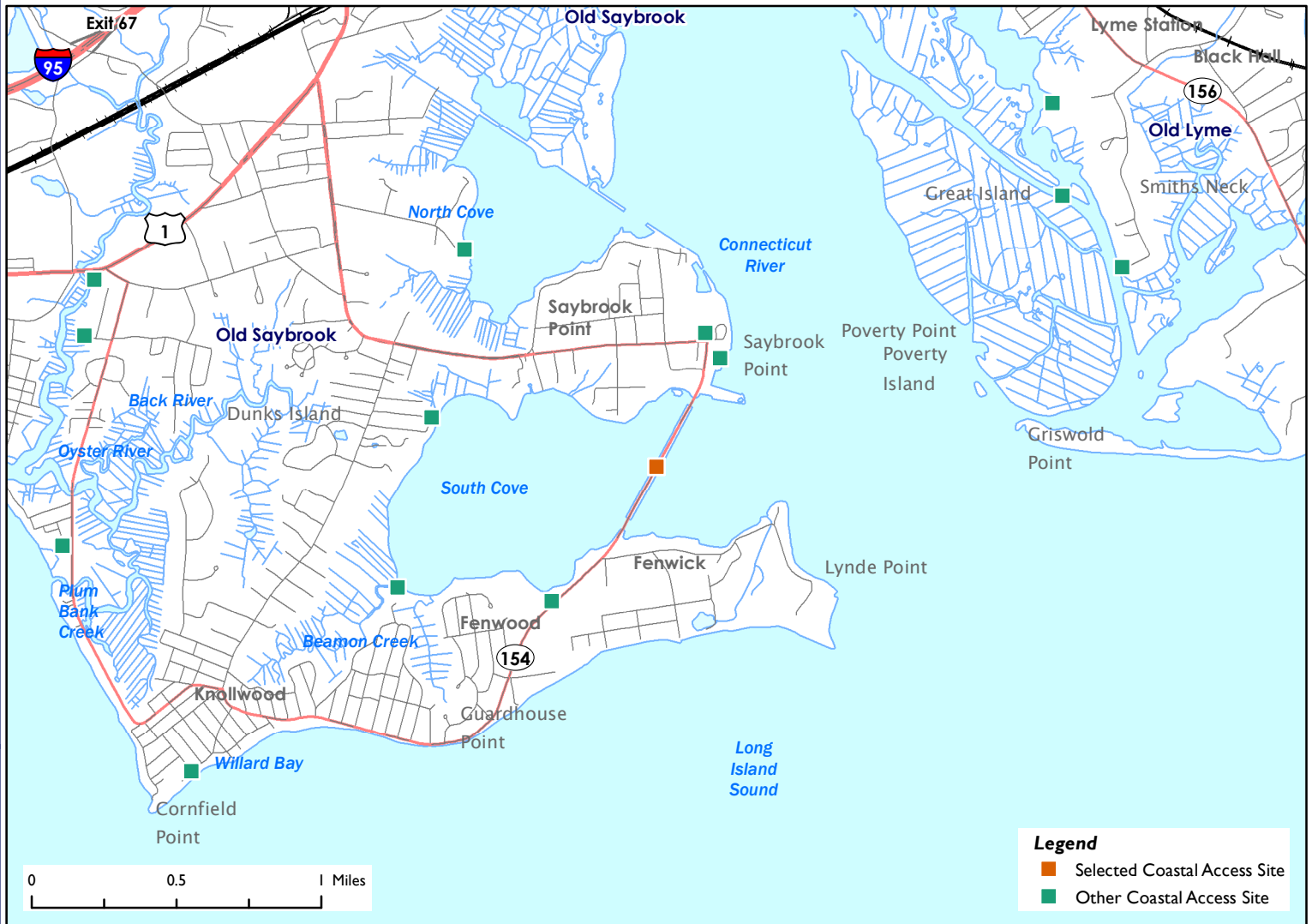
**EXPLORE CONNECTICUT'S SHORE**



# Connecticut Coastal Access Guide

South Cove Causeway

Rt 154 over South Cove Old Saybrook, CT 06475



**Legend**  
Orange square: Selected Coastal Access Site  
Green square: Other Coastal Access Site

**Latitude:** 41.2777 **Longitude:** -72.354753

### Directions:

From the East: Take I-95 South to exit 68. Stay straight onto US-1 for 0.9 miles. Turn left onto Boston Post Road, follow for 0.4 miles. Turn slight left on Route 154/Main Street. Continue to follow Route 154 which will make a right hand turn and become South Cove Causeway.

From the West: Take I-95 North to exit 67. Turn slight right onto Middlesex Turnpike/Route 154, follow for 0.5 miles. Turn slight left on Route 154/Main Street. Continue to follow Route 154 which will make a right hand turn and become South Cove Causeway.



**Additional Site Information:**  
CT Department of Transportation  
2800 Berlin Turnpike  
Newington, CT 06111  
<http://www.ct.gov/dot>

**General Questions or Comments:**  
Land and Water Resources Division  
Phone: (860) 424-3019  
Email: [coastal.access@ct.gov](mailto:coastal.access@ct.gov)  
[www.ct.gov/deep](http://www.ct.gov/deep)



CONNECTICUT DEPARTMENT OF  
ENERGY & ENVIRONMENTAL PROTECTION  
79 ELM STREET  
HARTFORD, CT 06106-5127

**EXPLORE CONNECTICUT'S SHORE**



Updated: May 2022