

# Connecticut Coastal Access Guide

Harkness Memorial State Park  
off Great Neck Road/Route 213 Waterford, CT 06385



**Legend**

- Selected Coastal Access Site (orange square)
- Other Coastal Access Site (green square)

**Site Description:** Enjoy the panoramic views of Long Island Sound from Eolia, the elegant summer mansion of the Harkness family set on over 230 seaside acres of sweeping lawns, with stately trees and spectacular gardens.



### Activities

Bird & Wildlife	<b>YES</b>	Supervised Swimming	<b>NO</b>
Crabbing	<b>NO</b>	Unsupervised Swimming	<b>NO</b>
Fishing	<b>YES</b>	SCUBA Diving	<b>NO</b>
Shellfishing	<b>NO</b>	Historic/Cultural Interest	<b>YES</b>
Trails	<b>YES</b>	Waterfowl Hunting	<b>NO</b>
Walkways	<b>NO</b>		

### Facilities

Access Pier	<b>NO</b>	Handicapped Access	<b>YES</b>
Boat Launch Ramp	<b>NO</b>	Nature Center/Museum	<b>NO</b>
Car-top Boat Access	<b>NO</b>	Picnic Area	<b>YES</b>
Camping	<b>NO</b>	RV Camping	<b>NO</b>
Food Concession	<b>NO</b>	Sanitary Facilities (Seasonal)	<b>YES</b>

### Environmental Setting

Bluff, Escarpment	<b>NO</b>	On Long Island Sound	<b>YES</b>
Harbor Setting	<b>NO</b>	Rocky Shore	<b>YES</b>
Intertidal Flat	<b>NO</b>	Sandy Beach	<b>YES</b>
Island	<b>NO</b>	Tidal River	<b>NO</b>
Tidal Wetland	<b>YES</b>	Lighthouse	<b>NO</b>

**Parking:** Parking Lot

**Fee:** YES



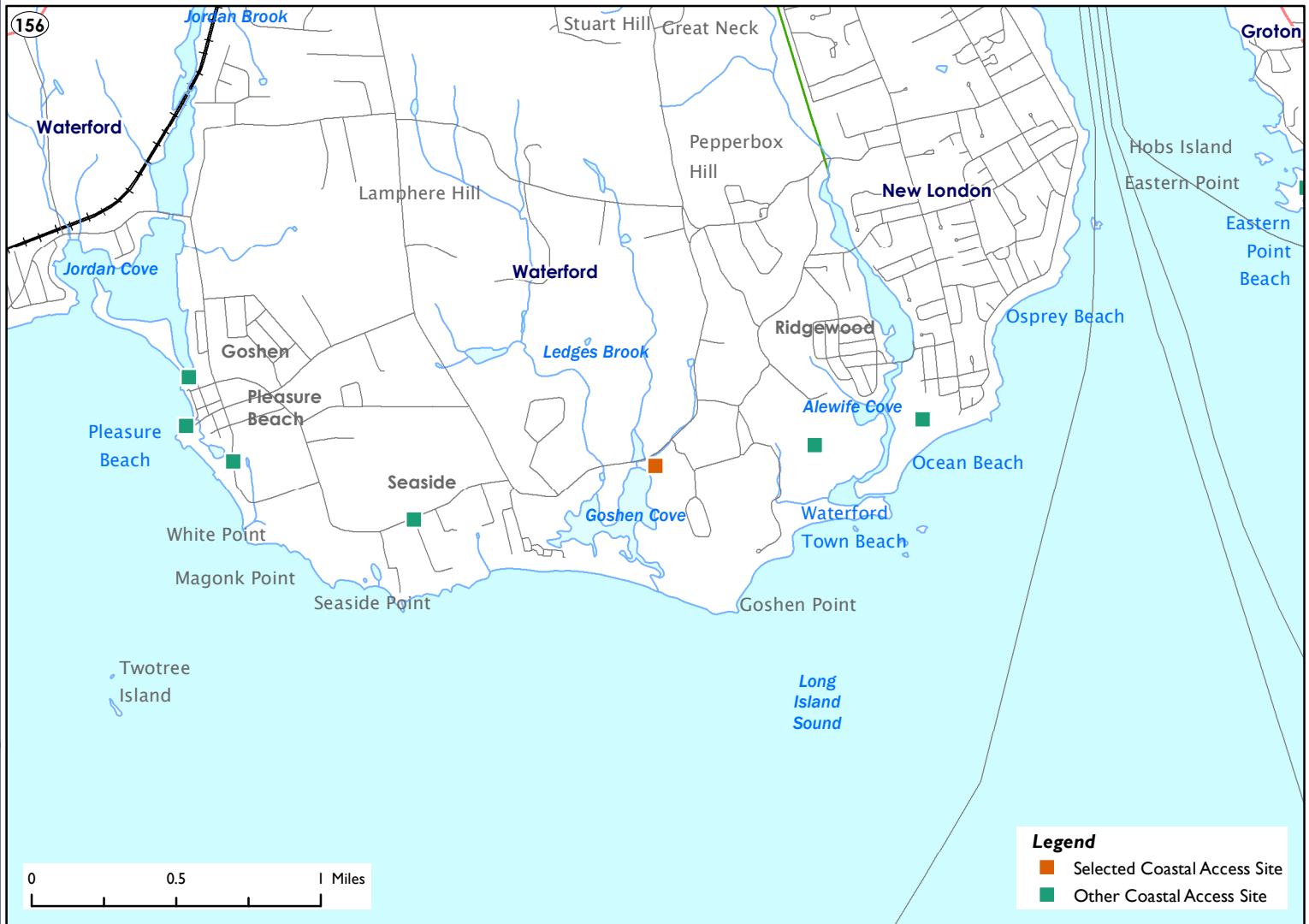
CONNECTICUT DEPARTMENT OF  
ENERGY & ENVIRONMENTAL PROTECTION  
79 ELM STREET  
HARTFORD, CT 06106-5127

**EXPLORE CONNECTICUT'S SHORE**



# Connecticut Coastal Access Guide

Harkness Memorial State Park  
off Great Neck Road/Route 213 Waterford, CT 06385



**Latitude:** 41.306512 **Longitude:** -72.116834

### Directions:

**From the East:** Take I 95 South to exit 81. At the end of the exit ramp, turn left onto the access road and proceed to the stop light. At the light turn left onto Cross Road and continue to the intersection with Route 1. Turn left onto Route 1 and continue to the traffic light at Avery Lane (Route 213). Turn right onto Avery Lane and follow to the park. Avery Lane will become Great Neck Road. The park will be on your right.

**From the West:** Take I-95 North to exit 75. Bear right at the end of the exit onto Route 1. Continue 3 miles to the traffic light at Avery Lane (Route 213), turn right and follow to the park. Avery Lane will become Great Neck Road. The park will be on your right.



### Additional Site Information:

CT Department of Energy and Environmental Protection  
79 Elm Street  
Hartford, CT  
<http://www.ct.gov/deep>

### General Questions or Comments:

Land and Water Resources Division  
Phone: (860) 424-3019  
Email: [coastal.access@ct.gov](mailto:coastal.access@ct.gov)  
[www.ct.gov/deep](http://www.ct.gov/deep)



CONNECTICUT DEPARTMENT OF  
ENERGY & ENVIRONMENTAL PROTECTION  
79 ELM STREET  
HARTFORD, CT 06106-5127

**EXPLORE CONNECTICUT'S SHORE**



Updated: May 2022