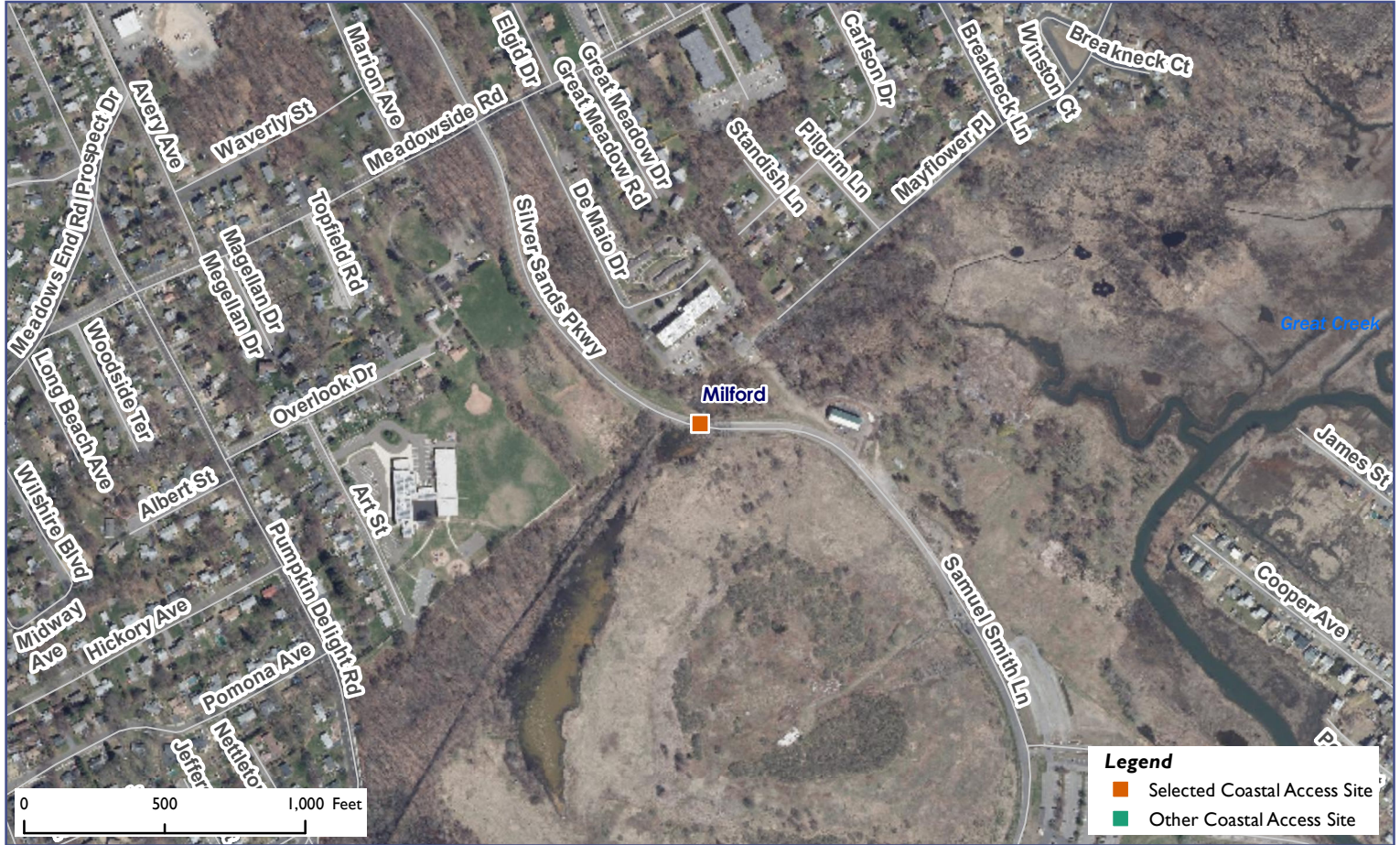


Connecticut Coastal Access Guide

Silver Sands State Park

Silver Sands Park Way Milford, CT 06460



Site Description: Silver Sands State Park features a 3/4 mile boardwalk connecting the State park to the City of Milford's Walnut Beach Park. The site includes an offshore island connected to the mainland by a sand and gravel bar (tombolo) that is submerged at high tide. Accessing the tombolo is **EXTREMELY DANGEROUS** and should be avoided. Access to the island is prohibited May 1 through August 31 to protect heron and egret rookeries. To help you reach Silver Sands State Park, some routes leading to this site are posted with boat launch symbol signs. Access to the Park in the evening is available to marine anglers only via the small parking area at the end of East Broadway located at the south central end of the Park. See the Park map for the location of the marine angler satellite parking area. To help you reach Silver Sands State Park, some routes leading to this site are posted with the brown and white Long Island Sound Access sign.

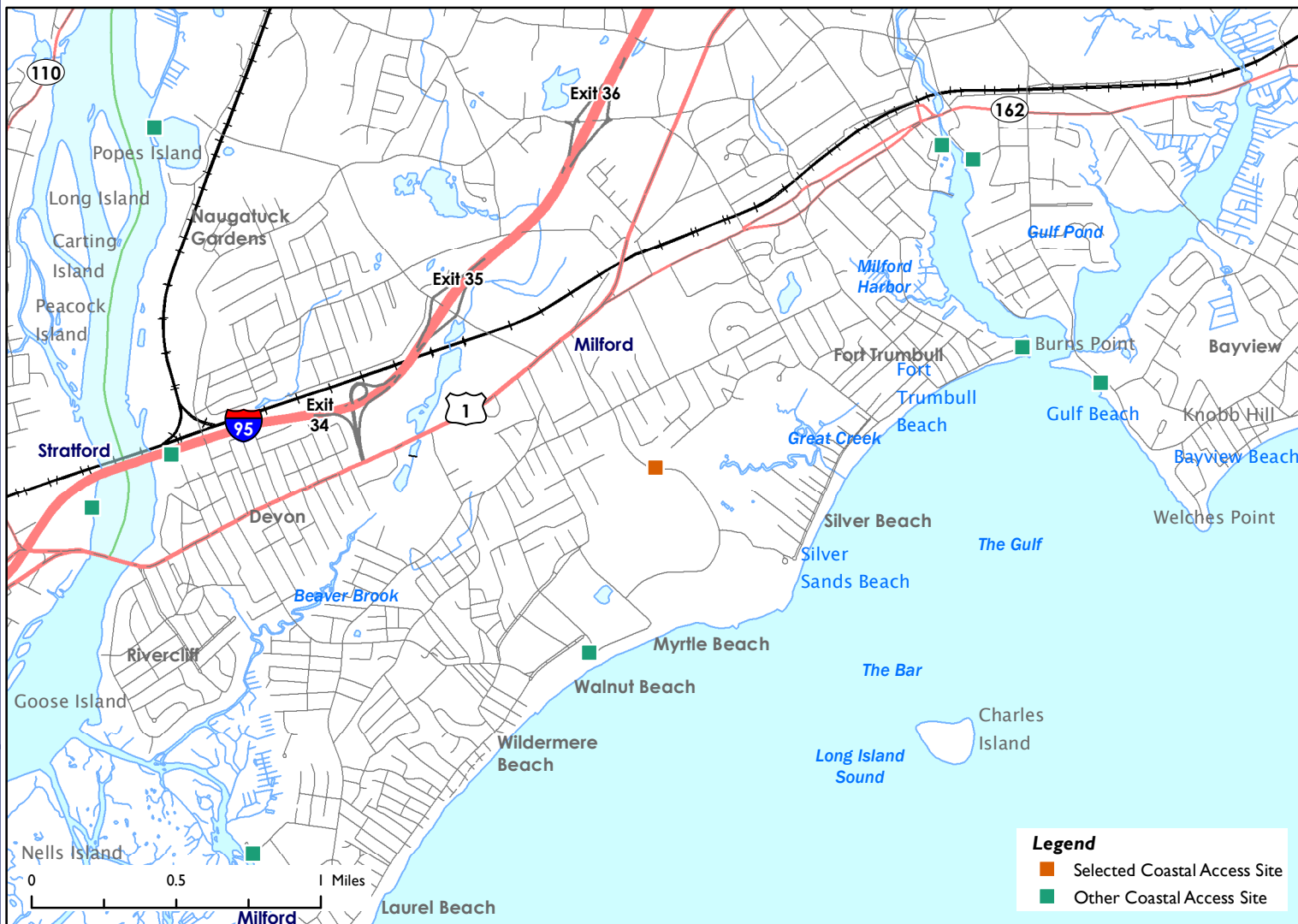


Activities			
	YES		YES
	YES		YES
	YES		NO
	NO		NO
	NO		NO
	YES		
Facilities			
	NO		NO
	NO		NO
	YES		YES
	NO		NO
	NO		YES
Environmental Setting			
	NO		YES
	NO		NO
	NO		YES
	YES		NO
	YES		NO
Parking: Parking Lot		Fee: NO	



Connecticut Coastal Access Guide

Silver Sands State Park
Silver Sands Park Way Milford, CT 06460



Latitude: 41.204924 Longitude: -73.074265

Directions:

From the East: Take I-95 South to exit 35. Turn left onto Schoolhouse Road south to Route 1 (Bridgeport Avenue). Turn left onto Route 1, then right at the next light onto Silver Sands Parkway. Follow the parkway across Meadowside Road and continue down hill to main parking area.

From the West: Take I-95 north to exit 35. Turn right onto Schoolhouse Road south to Route 1 (Bridgeport Avenue). Turn left onto Route 1 then right at the next light onto (Silver Sands Parkway. Follow Parkway across Meadowside Road and continue down hill to main parking area.



Additional Site Information:

CT Department of Energy and Environmental Protection
79 Elm Street
Hartford, CT
<http://www.ct.gov/deep>

General Questions or Comments:

Land and Water Resources Division
Phone: (860) 424-3019
Email: coastal.access@ct.gov
www.ct.gov/deep



CONNECTICUT DEPARTMENT OF
ENERGY & ENVIRONMENTAL PROTECTION
79 ELM STREET
HARTFORD, CT 06106-5127

EXPLORE CONNECTICUT'S SHORE



Updated: May 2022