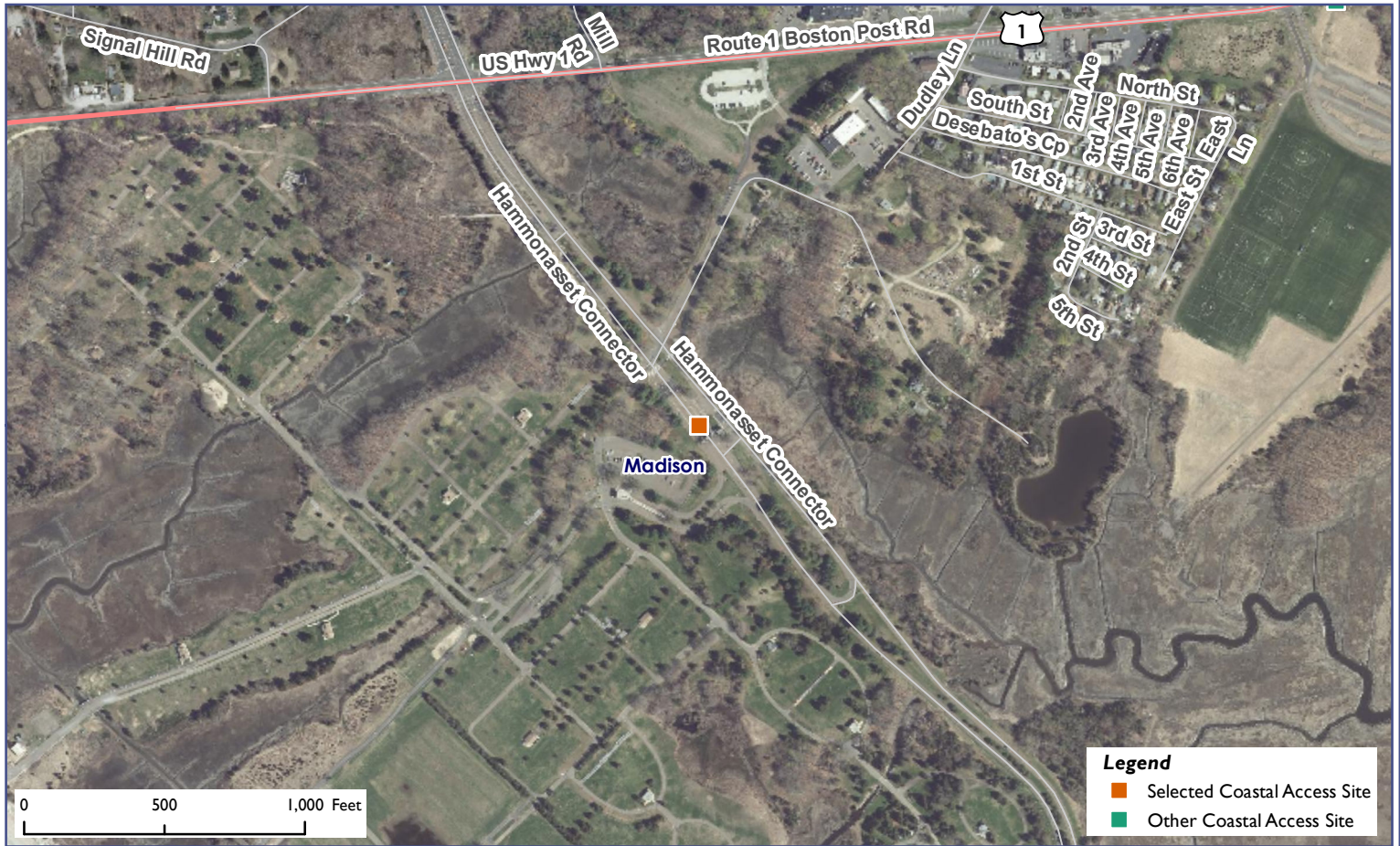


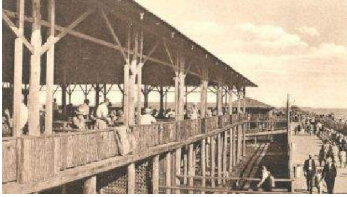
Connecticut Coastal Access Guide

Hammonasset Beach State Park

Boston Post Road (Route 1) Madison, CT 06443



Site Description: Hammonasset Beach State Park is Connecticut's largest shoreline park and beach hosting over 2 miles of sandy beach and 3/4 miles of boardwalk. To access the Park's car-top boat launch, follow signs to Meigs Point and the fishermen's parking area. The launch is on east side of Meigs Point jetty.



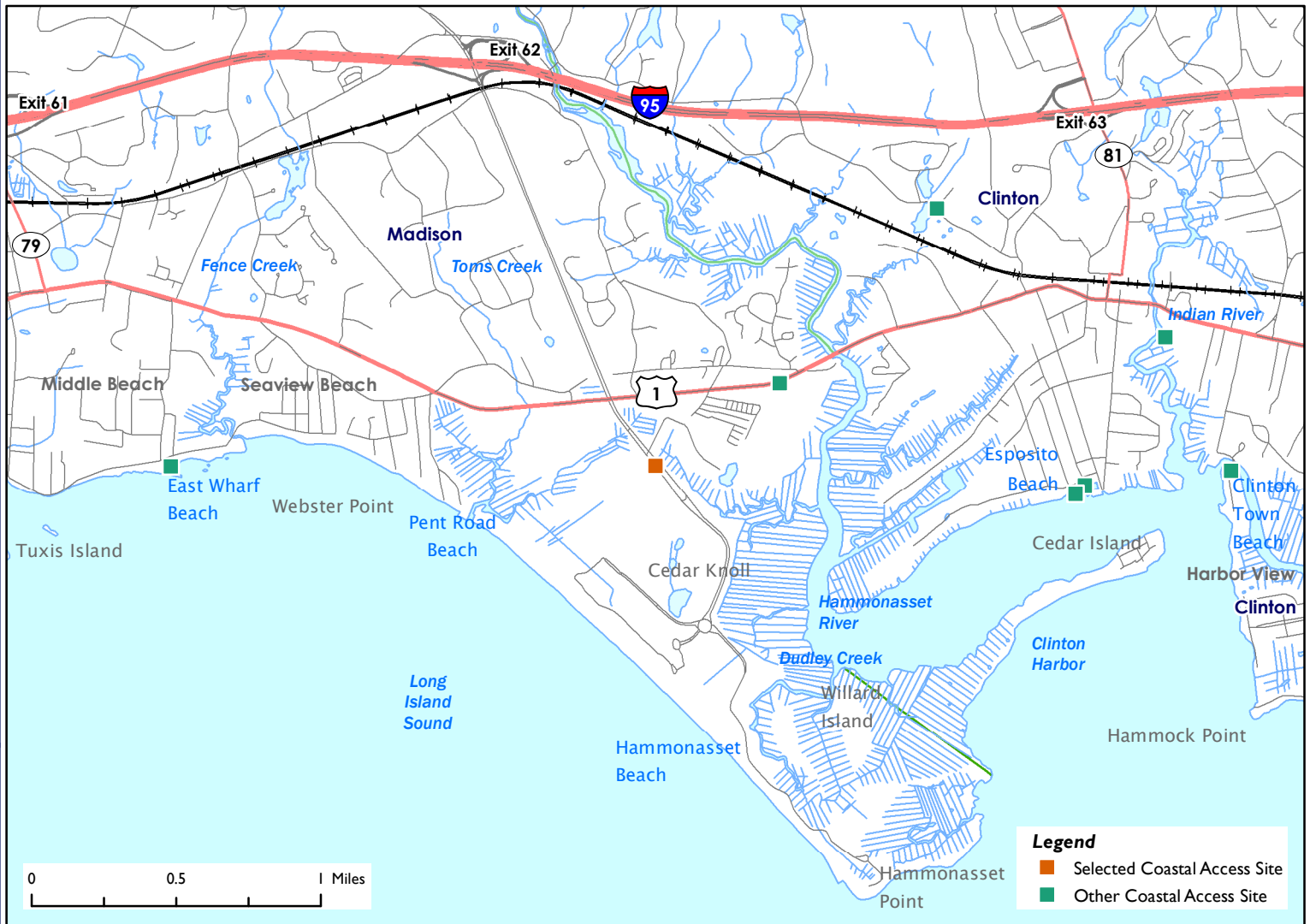
Activities			
	YES		YES
	YES		YES
	YES		YES
	NO		NO
	YES		NO
	YES		
Facilities			
	NO		YES
	NO		YES
	YES		YES
	YES		YES
	YES		YES
Environmental Setting			
	NO		YES
	NO		YES
	NO		YES
	NO		NO
	YES		NO
Parking: Parking Lot		Fee: YES	



Connecticut Coastal Access Guide

Hammonasset Beach State Park

Boston Post Road (Route 1) Madison, CT 06443



Latitude: 41.270427 **Longitude:** -72.558012

Directions:

From the East: Take I-95 South to exit 62. Take a left off the exit and go approximately 1 mile. Go straight through the traffic light crossing Route 1 (Boston Post Road) into the park.

From the West: Take I-95 North to exit 62. Take a right off the exit and go approximately 1 mile. Go straight through the traffic light crossing Route 1 (Boston Post Road) into the park.



Additional Site Information:

CT Department of Energy and Environmental Protection
79 Elm Street
Hartford, CT
<http://www.ct.gov/deep>

General Questions or Comments:

Land and Water Resources Division
Phone: (860) 424-3019
Email: coastal.access@ct.gov
www.ct.gov/deep



CONNECTICUT DEPARTMENT OF
ENERGY & ENVIRONMENTAL PROTECTION
79 ELM STREET
HARTFORD, CT 06106-5127

EXPLORE CONNECTICUT'S SHORE



Updated: May 2022