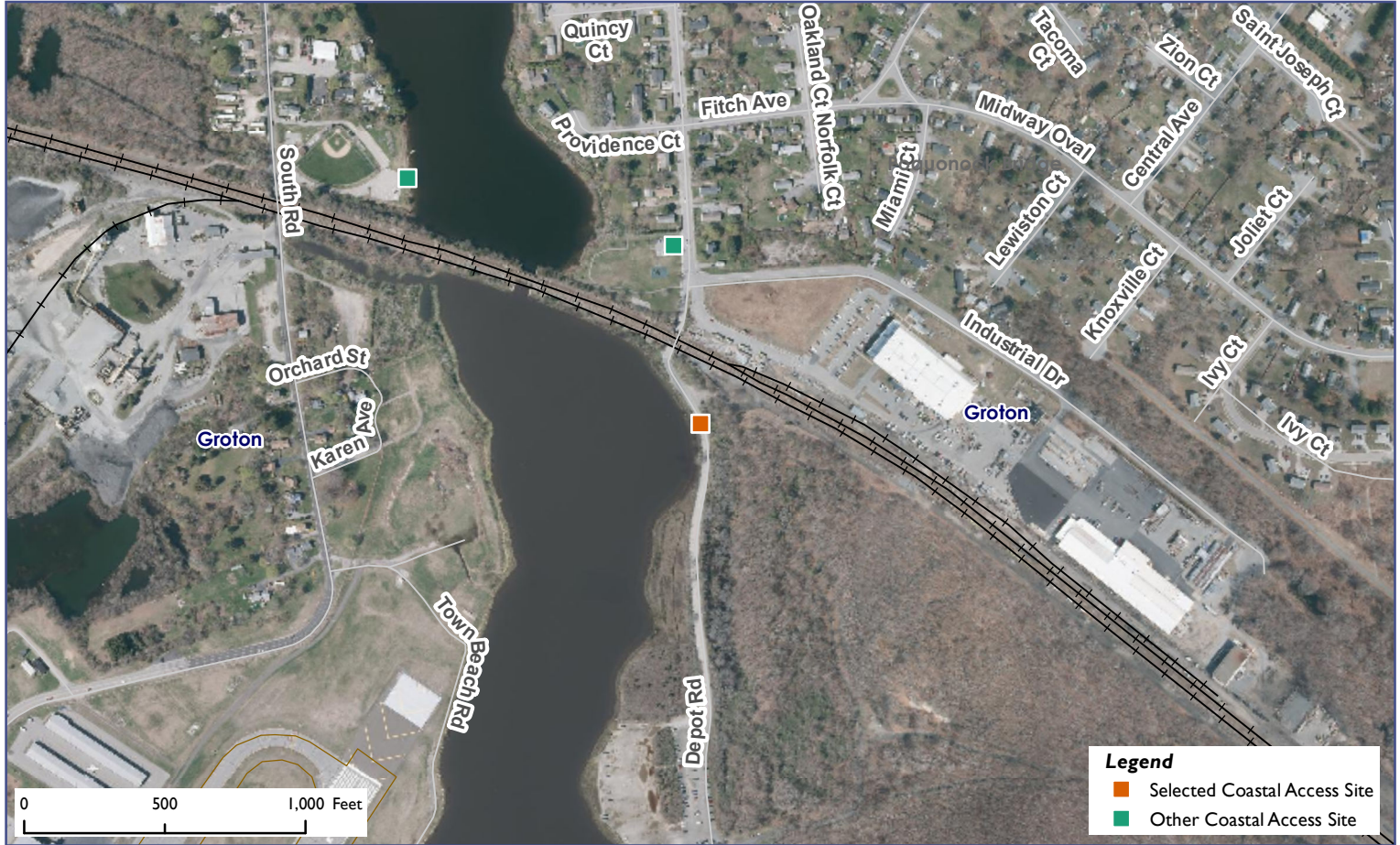


Connecticut Coastal Access Guide

Bluff Point State Park and Reserve
 Depot Road Groton, CT 06340



Legend

- Orange square: Selected Coastal Access Site
- Green square: Other Coastal Access Site

Site Description: Located at the end of Depot Road, this approximately 800 acre State reserve lies between the Poquonnock River and Mumford Cove. One of the largest natural areas in the State, it contains not only a variety of wildlife, but also a barrier beach, steep cliffs, forested lands and tidal wetlands. You can paddle up beyond the railroad bridge to the north and down to Bushy Point Beach. Hiking and running trails offer vistas of Long Island Sound, Mumford Cove and the Pequonnock River.

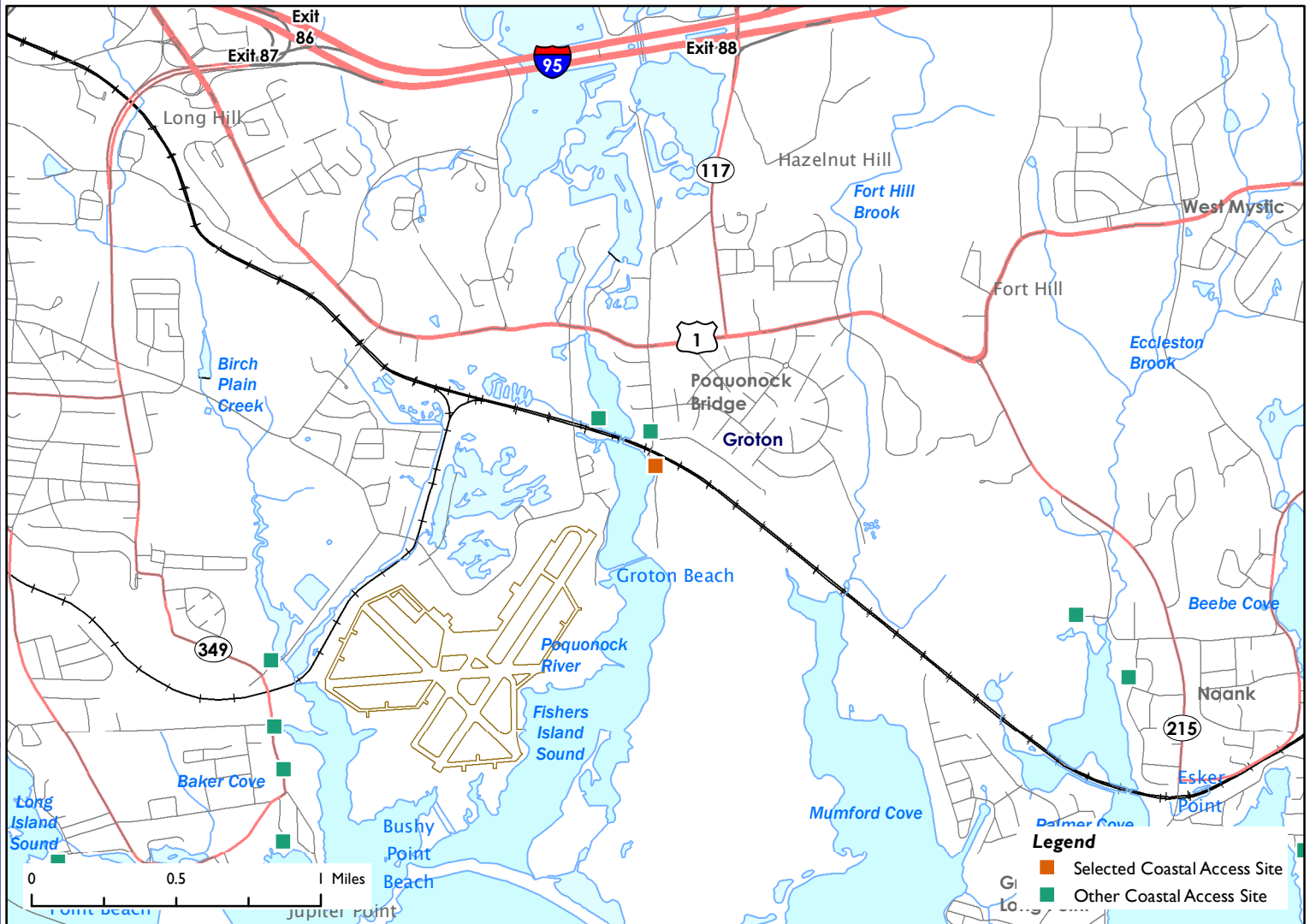


Activities			
	YES		NO
	YES		YES
	YES		NO
	YES		NO
	YES		NO
	NO		
Facilities			
	NO		YES
	NO		NO
	YES		NO
	NO		NO
	NO		YES
Environmental Setting			
	YES		YES
	NO		NO
	YES		YES
	NO		YES
	YES		NO
Parking:	Parking Lot		Fee: NO



Connecticut Coastal Access Guide

Bluff Point State Park and Reserve
Depot Road Groton, CT 06340



Latitude: 41.339799 **Longitude:** -72.03348

Directions:

From the East: Take I-95 South to exit 88. Turn left and go to the end. Take a right turn onto Route 1. Take a left at the light onto Depot Road. Go to the end.

From the West: Take I-95 North to exit 88. Turn right and go to the end. Take a right turn onto Route 1. Take a left at the light onto Depot Road. Go to the end.



Additional Site Information:

CT Department of Energy and Environmental Protection
79 Elm Street
Hartford, CT
<http://www.ct.gov/deep>

General Questions or Comments:

Land and Water Resources Division
Phone: (860) 424-3019
Email: coastal.access@ct.gov
www.ct.gov/deep



CONNECTICUT DEPARTMENT OF
ENERGY & ENVIRONMENTAL PROTECTION
79 ELM STREET
HARTFORD, CT 06106-5127

EXPLORE CONNECTICUT'S SHORE



Updated: May 2022