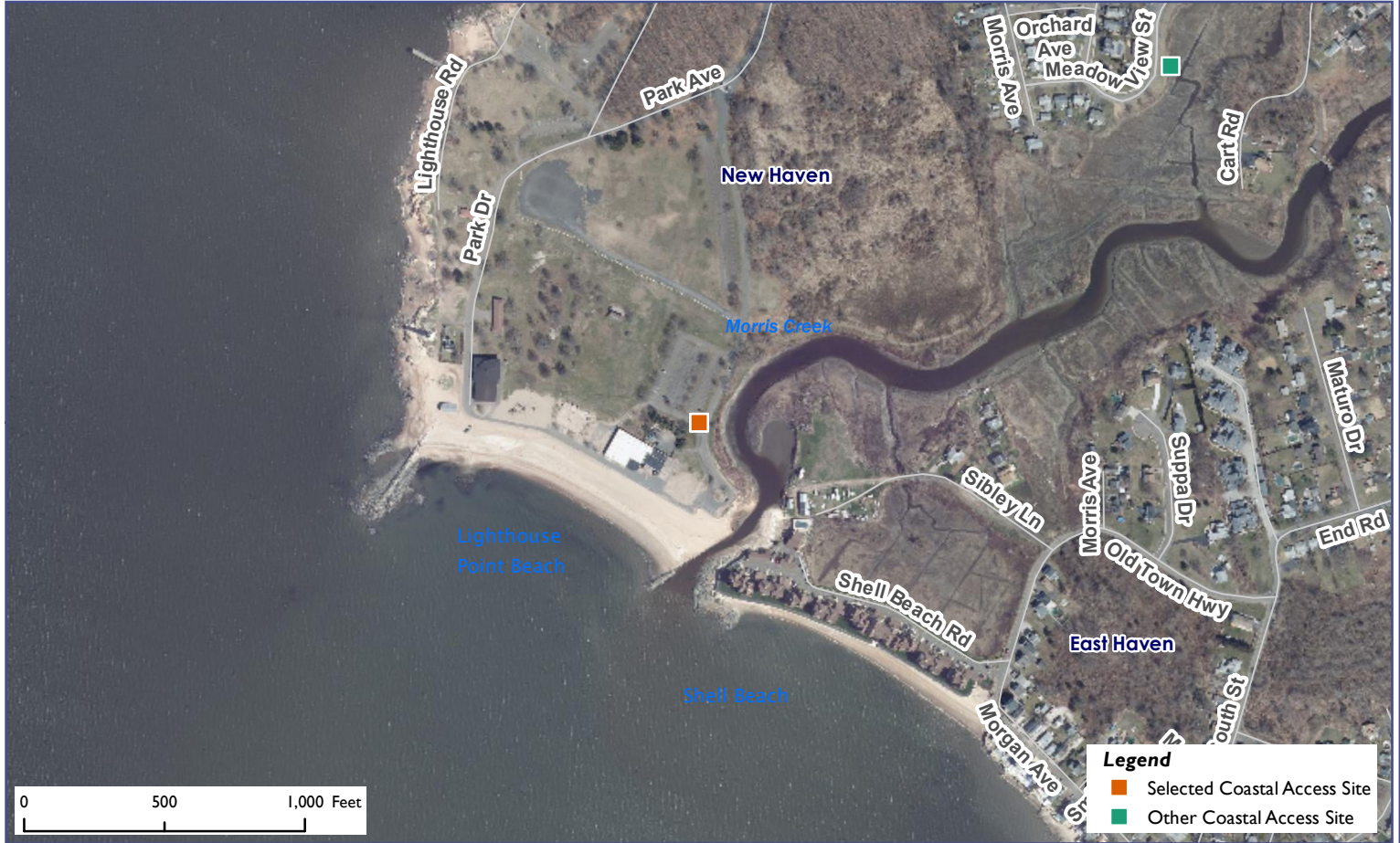


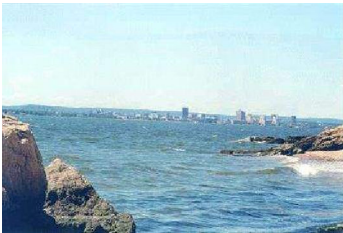
Connecticut Coastal Access Guide

Lighthouse Point Park

21 Lighthouse Rd New Haven, CT 06512



Site Description: Lighthouse Point Park offers something for everyone. One can view the 70-foot tall Five-Mile Point Lighthouse constructed in the 1840's and also the Southwest Ledge Light, a scenic operating lighthouse. Both car-top and trailered boat access to Long Island Sound. A boat ramp provides saltwater winter boaters with access to New Haven Harbor, but strong northwesterly winter winds make the return trip back to shore tricky. The Park offers canoes and kayaks more protected access to coastal waters at a sandy area near the mouth of Morris Creek, located at the east end of the Park's beach past the bathhouses. Stop by the large blue and white pavilion near the lighthouse to see the restored historic carousel (operates summer only). Visit the rangers during warm weather when they offer sea-kayak rental and instruction. For up-to-date information, visit the New Haven Parks and Recreation website.



Activities			
	YES		YES
	NO		NO
	YES		NO
	NO		YES
	YES		NO
	YES		
Facilities			
	YES		YES
	YES		NO
	YES		YES
	NO		NO
	YES		YES
Environmental Setting			
	NO		YES
	YES		YES
	NO		YES
	NO		NO
	YES		YES
Parking: Parking Lot		Fee: YES	



Connecticut Coastal Access Guide

Lighthouse Point Park
21 Lighthouse Rd New Haven, CT 06512



Latitude: 41.248125 **Longitude:** -72.900316

Directions:

From the East: Take I-95 South to the Frontage Road exit which is exit 51. Stay straight to go onto Frontage Road for 0.7 miles. Turn left onto Route 337/Townsend Avenue 2.2 miles. Turn right onto Lighthouse Road. Follow this road until it which will lead you into the park.

From the West: Take I-95 North to exit 50 to Lighthouse Point, which is Woodward Avenue. Continue onto Main Street. Turn right onto Route 337/Townsend Avenue. 2.2 miles. Turn right onto Lighthouse Road. Follow this road until it leads you into the park.



Additional Site Information:

City of New Haven
City Hall, 165 Church Street
New Haven, CT 06510
<http://www.cityofnewhaven.com>

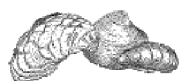
General Questions or Comments:

Land and Water Resources Division
Phone: (860) 424-3019
Email: coastal.access@ct.gov
www.ct.gov/deep



CONNECTICUT DEPARTMENT OF
ENERGY & ENVIRONMENTAL PROTECTION
79 ELM STREET
HARTFORD, CT 06106-5127

EXPLORE CONNECTICUT'S SHORE



Updated: May 2022