

# Connecticut Coastal Access Guide

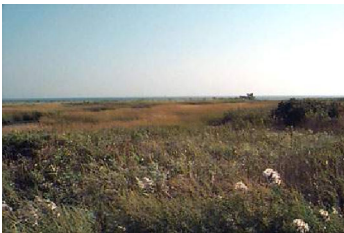
Sandy Point Bird Sanctuary  
 Beach Street West Haven, CT 06516



**Legend**

- Orange square: Selected Coastal Access Site
- Green square: Other Coastal Access Site

**Site Description:** Sandy Point Bird Sanctuary is a great place for bird watching. The site is sometimes closed during the beach nesting breeding season. There is a parking lot on-site. West Haven provides 3.5 miles of public beach or Waterfront Park, each with its own amenities or environmental setting. Most are connected through a 1.7 mile walkway providing pedestrians, bicyclists and rollerbladers a continuous waterfront urban “greenway.” Views of Long Island Sound exist throughout most of the walkway. Most beach parking lots in West Haven close at 11:30 p.m. although the walkway is open 24 hours, every day.

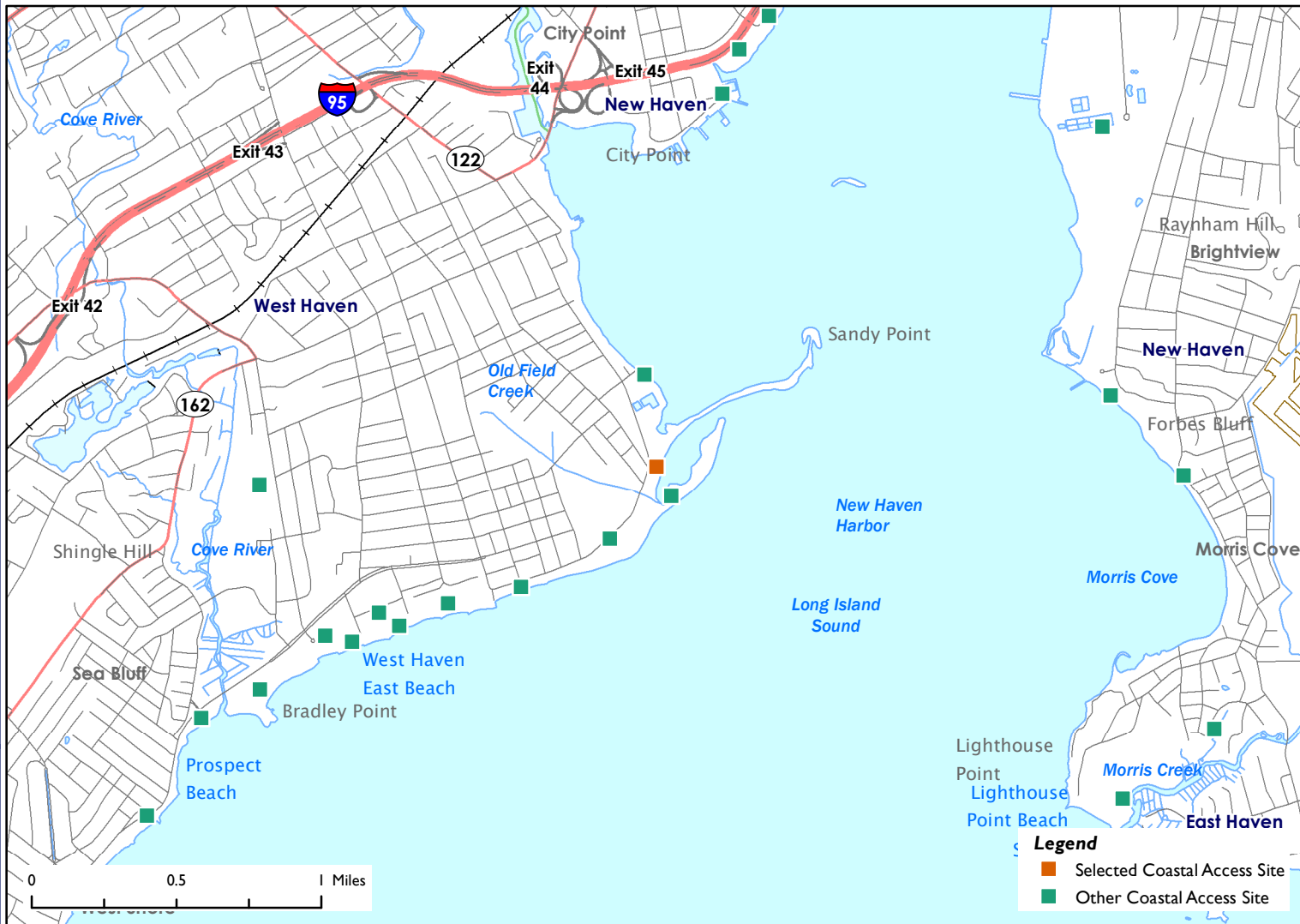


Activities			
	<b>YES</b>		<b>NO</b>
	<b>NO</b>		<b>YES</b>
	<b>YES</b>		<b>NO</b>
	<b>NO</b>		<b>NO</b>
	<b>YES</b>		<b>NO</b>
	<b>NO</b>		
Facilities			
	<b>NO</b>		<b>NO</b>
	<b>NO</b>		<b>NO</b>
	<b>NO</b>		<b>NO</b>
	<b>NO</b>		<b>NO</b>
	<b>NO</b>		<b>YES</b>
Environmental Setting			
	<b>NO</b>		<b>YES</b>
	<b>NO</b>		<b>NO</b>
	<b>YES</b>		<b>YES</b>
	<b>NO</b>		<b>YES</b>
	<b>YES</b>		<b>NO</b>
<b>Parking:</b> Parking Lot		<b>Fee:</b> YES	



# Connecticut Coastal Access Guide

Sandy Point Bird Sanctuary  
Beach Street West Haven, CT 06516



**Latitude:** 41.264686 **Longitude:** -72.931254

### Directions:

From the East: Take I-95 South to exit 44. Turn slight right onto Kimberly Avenue. Take a left onto First Avenue. First Avenue becomes Beach Street. Sandy Point will be on your left.

From the West: Take I-95 North to exit 44. Take the West Haven Ramp. Turn left onto Kimberly Avenue. Turn left onto First Avenue. First Avenue becomes Beach Street. Sandy Point will be on your left.



### Additional Site Information:

City of West Haven  
355 Main Street  
West Haven, CT 06516  
<http://www.cityofwesthaven.com/>

### General Questions or Comments:

Land and Water Resources Division  
Phone: (860) 424-3019  
Email: [coastal.access@ct.gov](mailto:coastal.access@ct.gov)  
[www.ct.gov/deep](http://www.ct.gov/deep)



CONNECTICUT DEPARTMENT OF  
ENERGY & ENVIRONMENTAL PROTECTION  
79 ELM STREET  
HARTFORD, CT 06106-5127

**EXPLORE CONNECTICUT'S SHORE**



Updated: May 2022