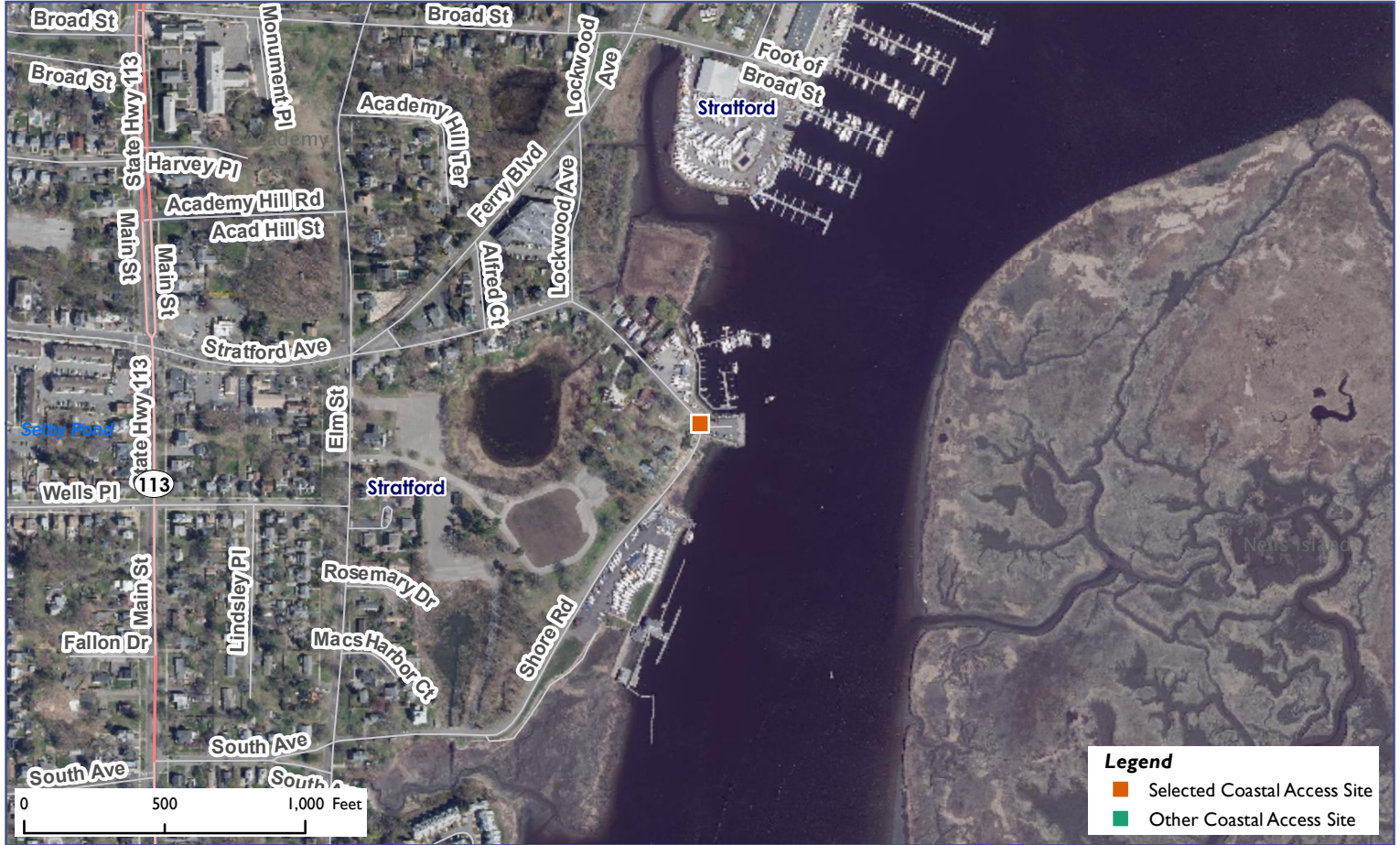


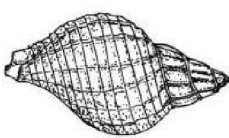
# Connecticut Coastal Access Guide

Bond's Dock

Stratford Avenue and Shore Road Stratford, CT 06497



**Site Description:** Bond's Dock is a very popular fishing spot and area for viewing the Housatonic River and Nell's Island. Some parking is available on the wharf.



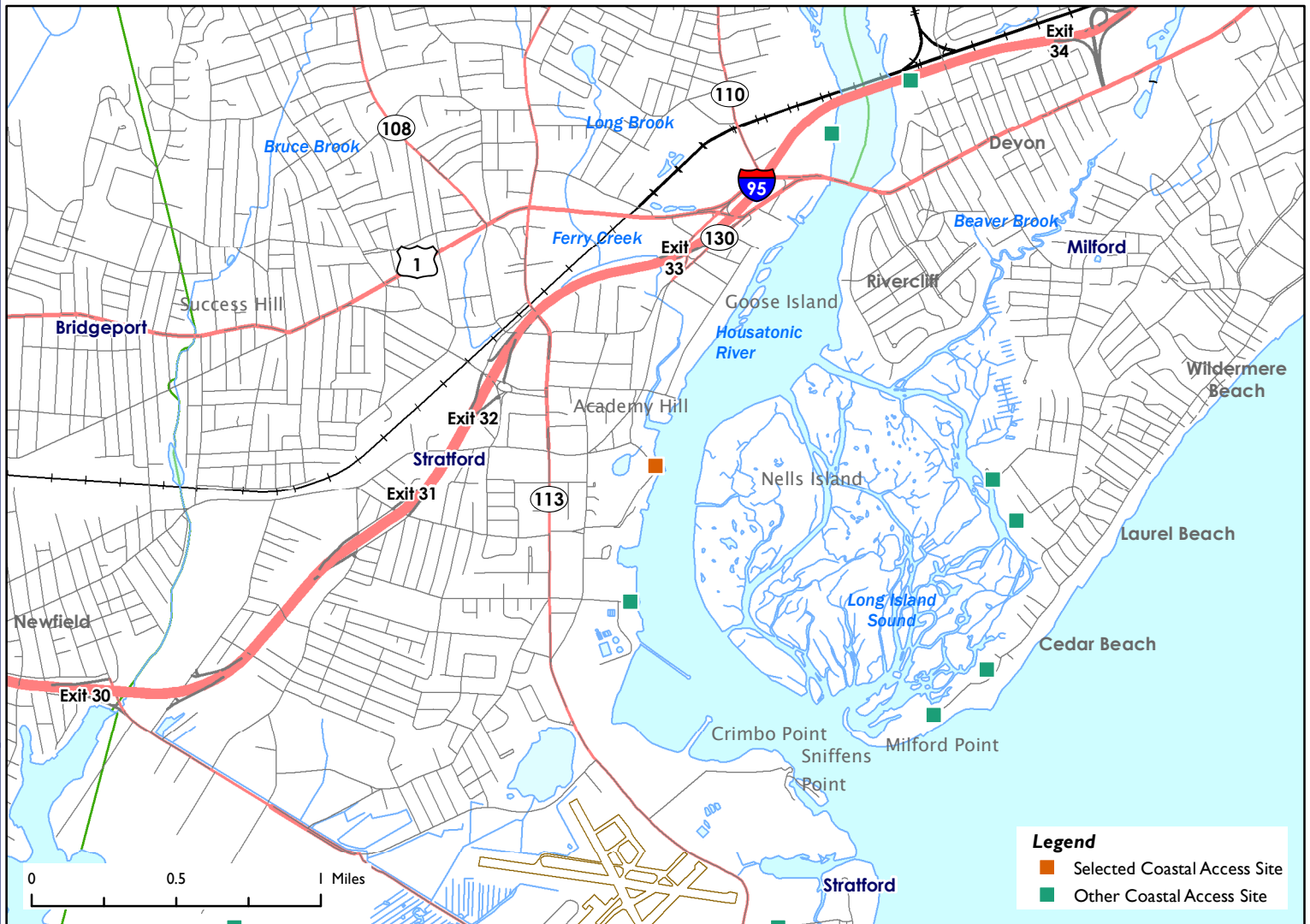
Activities			
	<b>YES</b>		<b>NO</b>
	<b>NO</b>		<b>NO</b>
	<b>YES</b>		<b>NO</b>
	<b>NO</b>		<b>NO</b>
	<b>NO</b>		<b>NO</b>
	<b>NO</b>		
Facilities			
	<b>YES</b>		<b>NO</b>
	<b>NO</b>		<b>NO</b>
	<b>NO</b>		<b>NO</b>
	<b>NO</b>		<b>NO</b>
	<b>NO</b>		<b>YES</b>
Environmental Setting			
	<b>NO</b>		<b>NO</b>
	<b>NO</b>		<b>NO</b>
	<b>NO</b>		<b>NO</b>
	<b>NO</b>		<b>YES</b>
	<b>NO</b>		<b>NO</b>
<b>Parking:</b> Parking Lot		<b>Fee:</b> NO	



# Connecticut Coastal Access Guide

Bond's Dock

Stratford Avenue and Shore Road Stratford, CT 06497



Latitude: 41.186107 Longitude: -73.123246

## Directions:

From the East: Take I-95 South to exit 32. Make a left onto Linden Avenue. Turn left onto West Broad Street and you will pass through one roundabout. Turn right onto Route 113/Main Street. Take a left onto Stratford Avenue. When Stratford Avenue turns into Shore Road Bond's Dock is on the left.

From the West: Take I-95 North to exit number 32. Take the ramp to the Railroad Station. Turn slight right onto Beardsley Avenue. Then make a left onto Stratford Avenue. When Stratford Avenue turns into Shore Road Bond's Dock is on the left.



## Additional Site Information:

Town of Stratford  
1 Dorne Drive  
Stratford, CT 06615  
<http://www.townofstratford.com/>

## General Questions or Comments:

Land and Water Resources Division  
Phone: (860) 424-3019  
Email: [coastal.access@ct.gov](mailto:coastal.access@ct.gov)  
[www.ct.gov/deep](http://www.ct.gov/deep)



CONNECTICUT DEPARTMENT OF  
ENERGY & ENVIRONMENTAL PROTECTION  
79 ELM STREET  
HARTFORD, CT 06106-5127

**EXPLORE CONNECTICUT'S SHORE**



Updated: May 2022