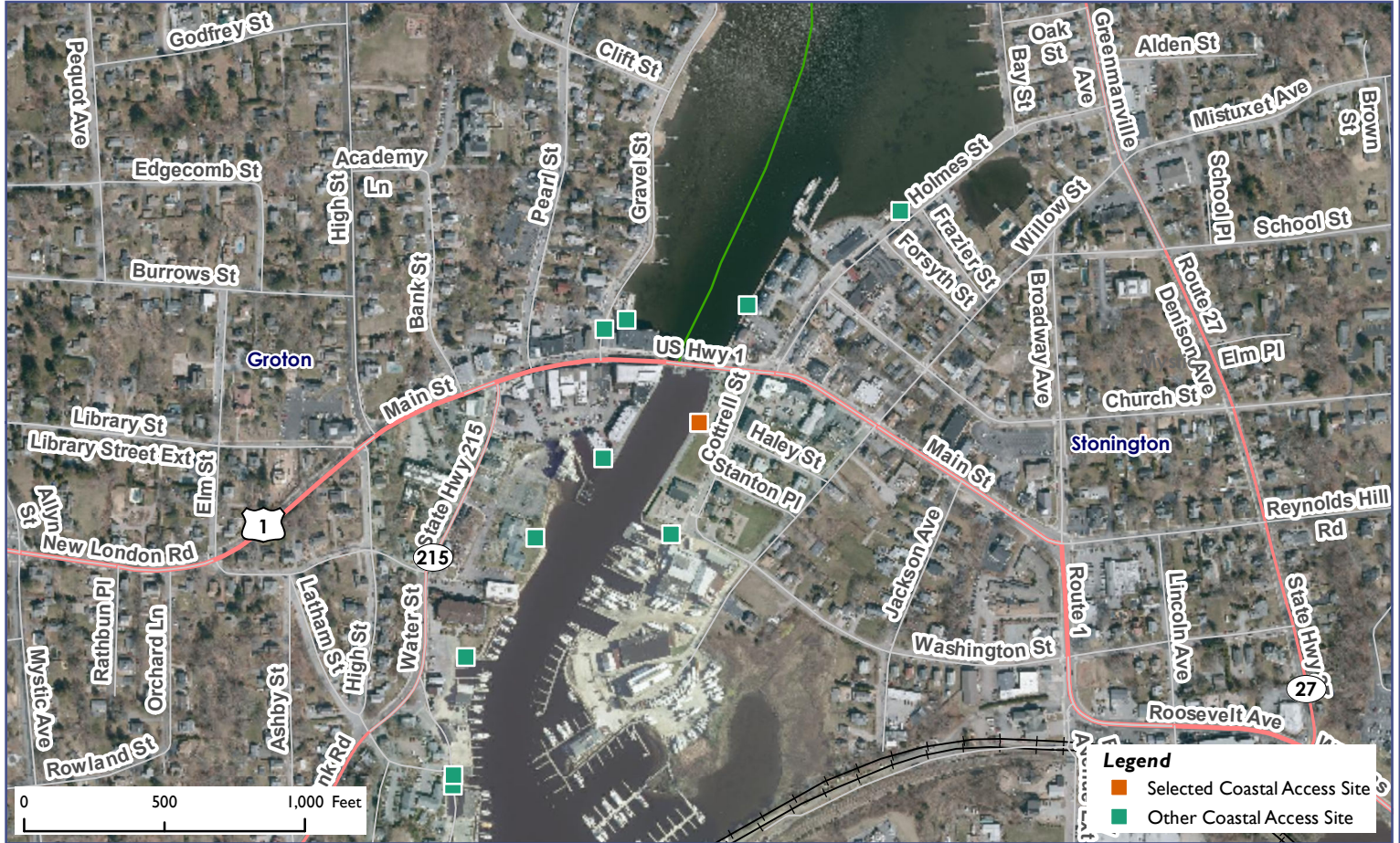


Connecticut Coastal Access Guide

Mystic River Park

Cottrell Street Stonington, CT 06355



Site Description: Mystic River Park is located on the river adjacent to the historic Mystic drawbridge. There is no fee to enter or use the park. Facilities include a waterfront access pier with sitting and fishing areas and dinghy dock for small boats and public restroom. Boaters can access the site for short stays by securing dinghies on-site (no overnight stays allowed) after consulting the dockmaster.

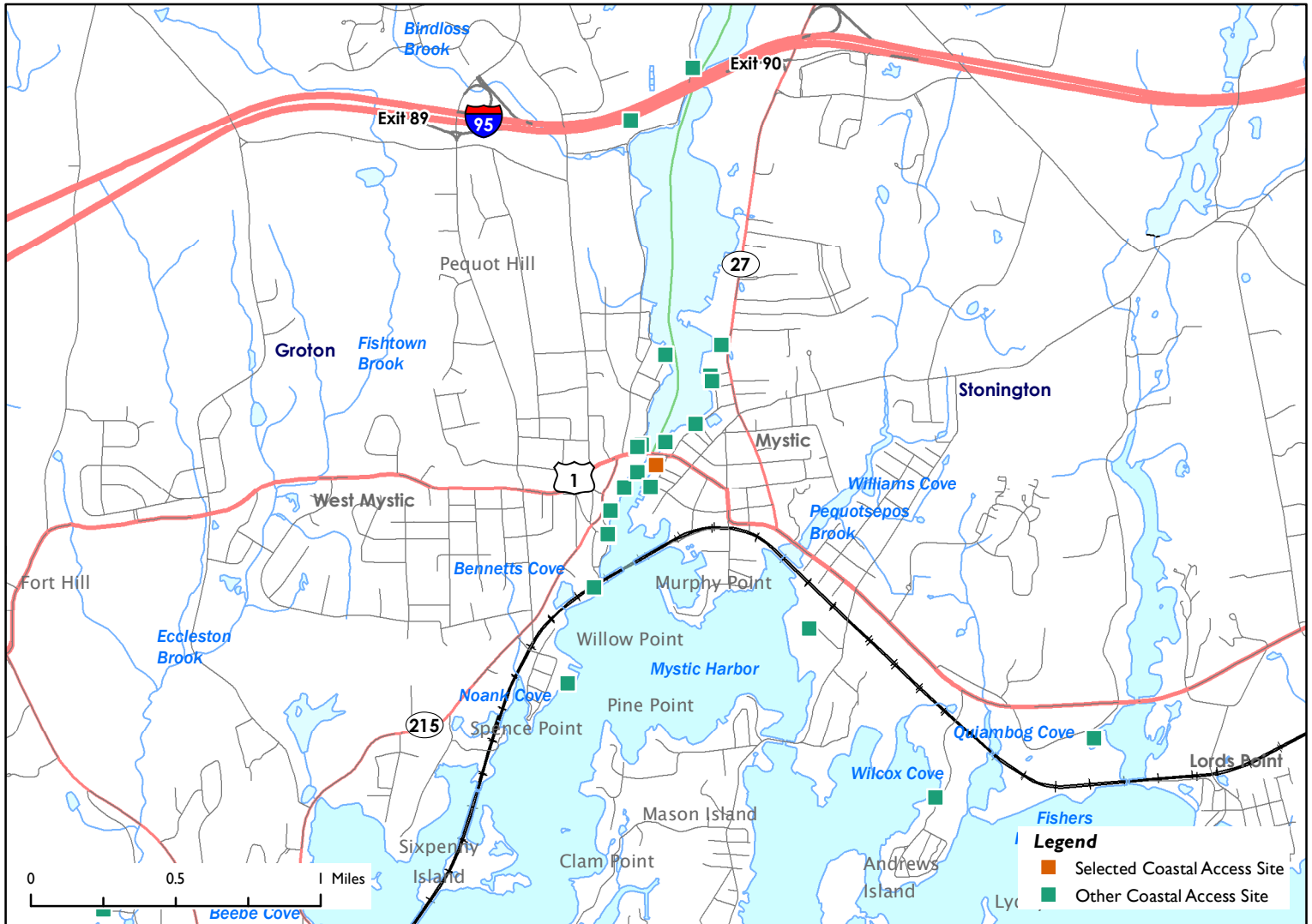


| Activities | | | |
|---------------------------|-----|----------------|-----|
| | NO | | NO |
| | NO | | NO |
| | YES | | NO |
| | NO | | NO |
| | NO | | NO |
| | YES | | |
| Facilities | | | |
| | YES | | YES |
| | NO | | NO |
| | NO | | YES |
| | NO | | NO |
| | NO | | YES |
| Environmental Setting | | | |
| | NO | | NO |
| | NO | | NO |
| | NO | | NO |
| | NO | | YES |
| | NO | | NO |
| Parking: On street | | Fee: NO | |



Connecticut Coastal Access Guide

Mystic River Park
Cottrell Street Stonington, CT 06355



Latitude: 41.354139 **Longitude:** -71.968656

Directions:

From the East: Take I-95 South to Exit 90. Turn left onto CT-27 S. Go 1.5 miles, then turn right onto Holmes St. Go 0.3 miles and turn right onto E Main St. Take an immediate left onto Cottrell St and the destination will be on the right.

From the West: Take I-95 North to exit 89. Take a right off the highway onto Allyn Street. Follow until intersection with US-1. Here you will take a left. Continue over the bridge. After the Bridge make a right onto Cottrell Street. Mystic River Park will be on your right.



Additional Site Information:
Mystic Fire District

<http://www.mysticfd.org/>

General Questions or Comments:

Land and Water Resources Division
Phone: (860) 424-3019
Email: coastal.access@ct.gov
www.ct.gov/deep



CONNECTICUT DEPARTMENT OF
ENERGY & ENVIRONMENTAL PROTECTION
79 ELM STREET
HARTFORD, CT 06106-5127

EXPLORE CONNECTICUT'S SHORE



Updated: May 2022