

# Jewett City Rodgers Bedrock Compilation Sheet 2 (paper)

## Map

## NOTICE !

Bedrock quadrangle 1:24,000 scale compilation sheets for the Bedrock Geological Map of Connecticut, John Rodgers, 1985, Connecticut Geological and Natural History Survey, Department of Environmental Protection, Hartford, Connecticut, in Cooperation with the U.S. Geological Survey, 1:125,000 scale, 2 sheets. [minimum 116 paper quad compilations with mylar overlays constituting the master file set for geologic lines and units compiled to the State map, some quads have multiple sheets depicting iterations of mapping]. Compilations drafted by Nancy Davis, Craig Dietsch, and Nat Gibbons under the direction of John Rodgers.

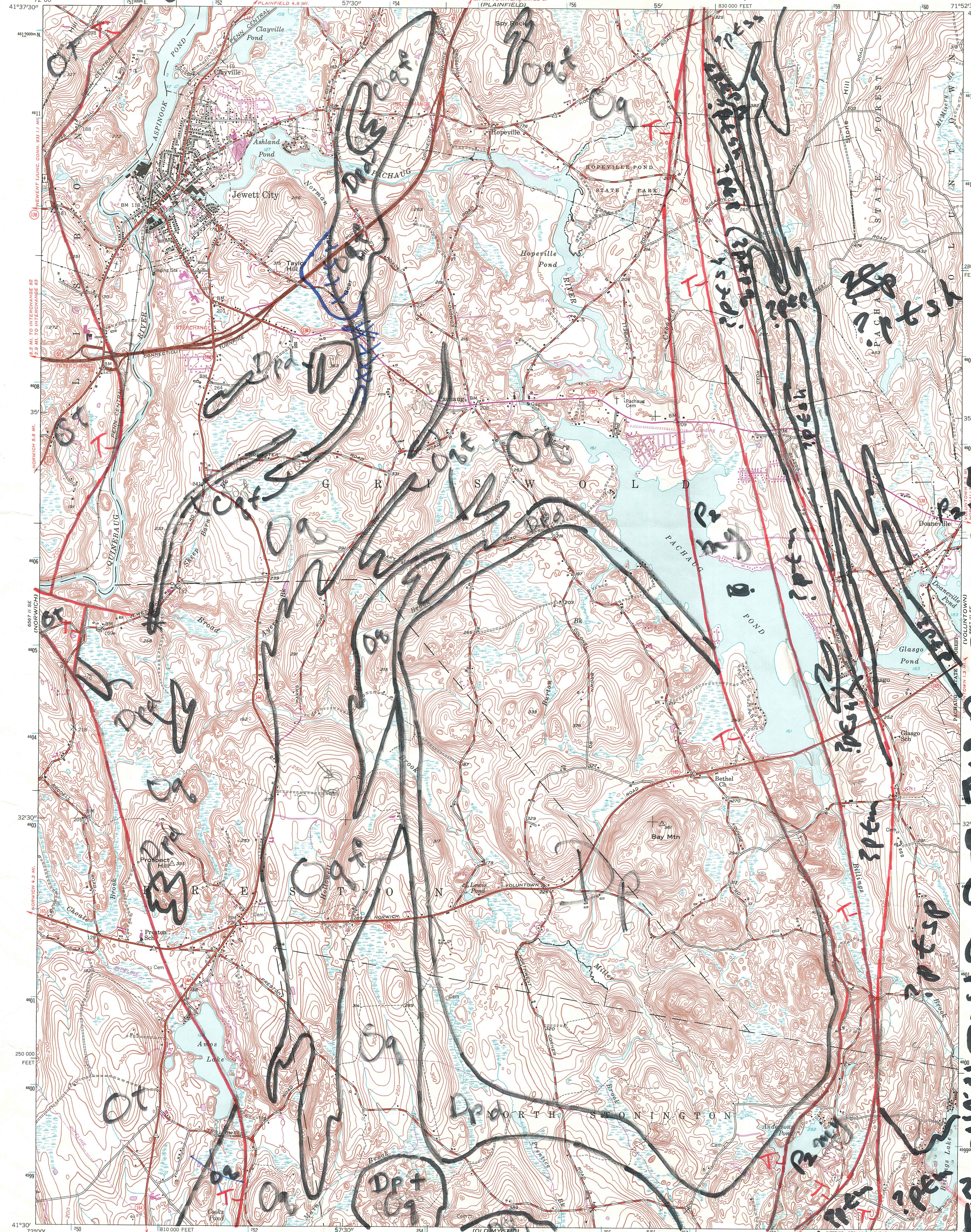
Geologic unit designation table translates earlier map unit nomenclature to the units ultimately used in the State publication.

This map set contains unpublished maps, cross-sections, and related information archived by the State Geological and Natural History Survey of Connecticut as part of the Survey Library Collection.

These materials have not been reviewed for accuracy, consistency, or completeness. For many geographic areas, more current information exists, either in published or unpublished form. These materials were developed under research and mapping agreements between the State Geological Survey and individual scientists, academic institutions, or graduate students. The veracity of the information contained within these documents is the responsibility of the authorship. The State Geological and Natural History Survey of Connecticut, does not promote or endorse this content, nor does the State Survey attest as to its level of accuracy.

These materials have been preserved under a cooperative agreement between the State Geological Survey and the US Geological Survey as part of the National Geological and Geophysical Data Preservation Program. [www.datapreservation.usgs.gov](http://www.datapreservation.usgs.gov)

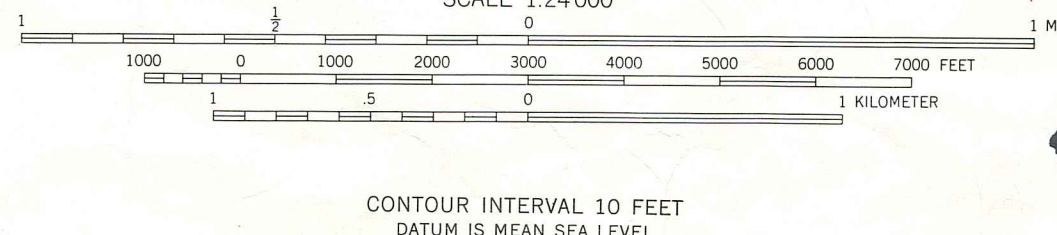
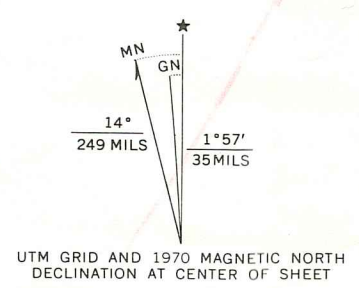
These materials are offered in the spirit of open government. Reproduction of these manuscripts was conducted to the highest practical degree, within the parameters of the funding mechanism. Original documents are available for inspection by contacting the Connecticut State Geologist.



*Exploration  
my-  
Mylonite  
along  
Paleozoic  
fault  
Dp-Preston  
yellow  
Dpd-diatomite  
shale  
Preston  
yellow  
Ot-Tertiary  
hill fm.  
Og-Quartz  
berg fm  
Oqf-Felsic  
gneiss member  
of Orange-  
berg fm.  
Oqfss-  
Saturated  
granite  
gneiss  
Oqfsh-  
Lower Valley  
granite  
gneiss  
Oqfss-  
Saturated  
granite  
gneiss  
Oqfsh-  
Lower Valley  
granite  
gneiss*

*ROAD CLASSIFICATION*  
Heavy-duty  
Light-duty  
Improved dirt  
Route  
73  
JEWETT CITY CONN.  
N 41° 52' 30" W 7152.57'  
AMS 68' 11" NE (ONECO)  
1970  
AMS 68' 11" NE (ONECO)

Mapped, edited, and published by the Geological Survey  
Control by USGS, USC&GS, and Connecticut Geodetic Survey  
Culture and drainage in part compiled from aerial photographs  
taken 1941. Topography by plane-table surveys 1942  
Revised 1953 from 1952 photography  
Polyconic projection. 1927 North American datum  
10,000-foot grid based on Connecticut coordinate system  
1000-meter Universal Transverse Mercator grid ticks,  
zone 19, shown in blue  
Revisions shown in purple compiled in cooperation with  
Connecticut Highway Department from aerial photographs taken 1970  
This information not field checked



CONTOUR INTERVAL 10 FEET  
DATUM IS MEAN SEA LEVEL