

Norfolk Rodgers Bedrock Compilation Sheet (paper)

Map

NOTICE !

Bedrock quadrangle 1:24,000 scale compilation sheets for the Bedrock Geological Map of Connecticut, John Rodgers, 1985, Connecticut Geological and Natural History Survey, Department of Environmental Protection, Hartford, Connecticut, in Cooperation with the U.S. Geological Survey, 1:125,000 scale, 2 sheets. [minimum 116 paper quad compilations with mylar overlays constituting the master file set for geologic lines and units compiled to the State map, some quads have multiple sheets depicting iterations of mapping]. Compilations drafted by Nancy Davis, Craig Dietsch, and Nat Gibbons under the direction of John Rodgers.

Geologic unit designation table translates earlier map unit nomenclature to the units ultimately used in the State publication.

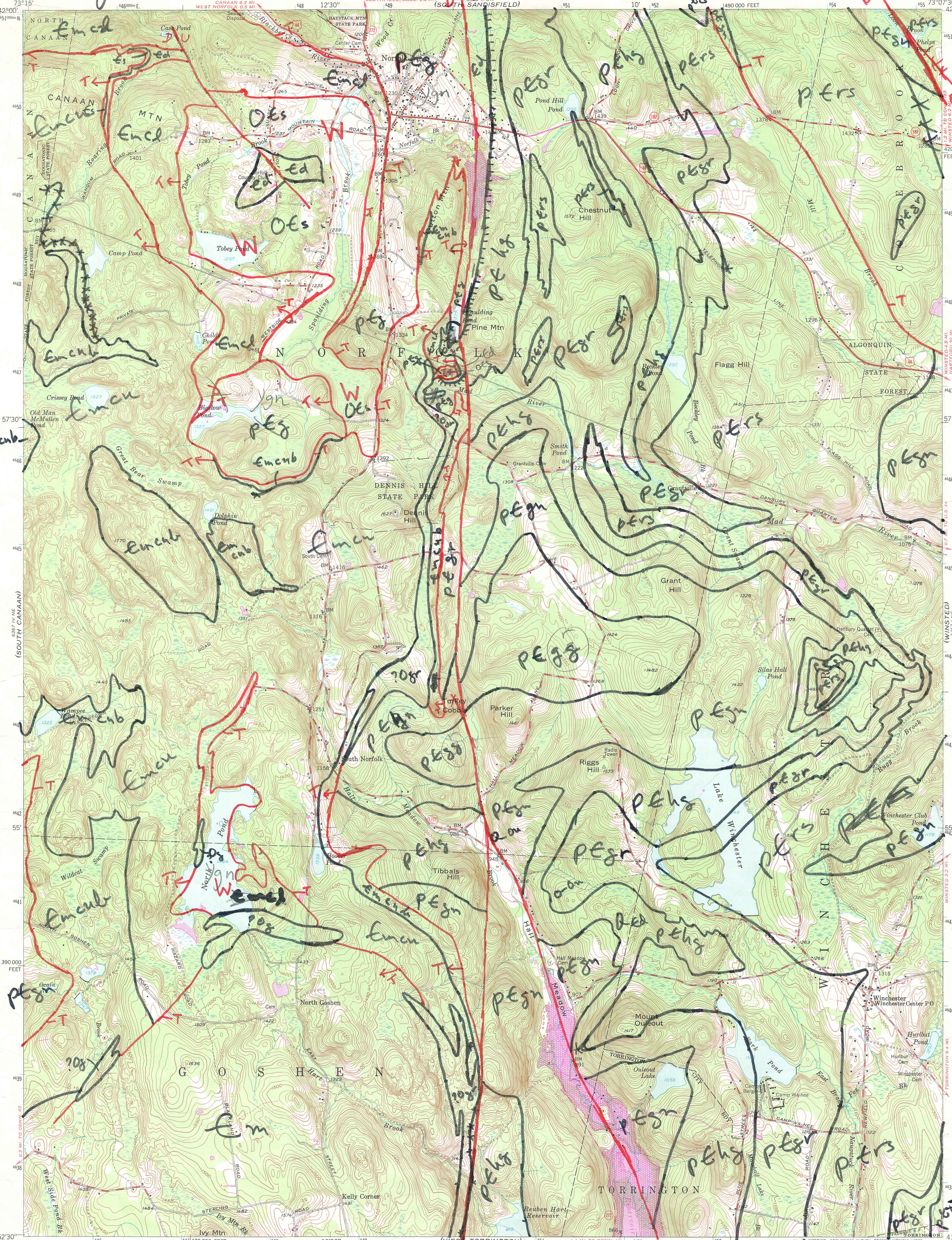
This map set contains unpublished maps, cross-sections, and related information archived by the State Geological and Natural History Survey of Connecticut as part of the Survey Library Collection.

These materials have not been reviewed for accuracy, consistency, or completeness. For many geographic areas, more current information exists, either in published or unpublished form. These materials were developed under research and mapping agreements between the State Geological Survey and individual scientists, academic institutions, or graduate students. The veracity of the information contained within these documents is the responsibility of the authorship. The State Geological and Natural History Survey of Connecticut, does not promote or endorse this content, nor does the State Survey attest as to its level of accuracy.

These materials have been preserved under a cooperative agreement between the State Geological Survey and the US Geological Survey as part of the National Geological and Geophysical Data Preservation Program. www.datapreservation.usgs.gov

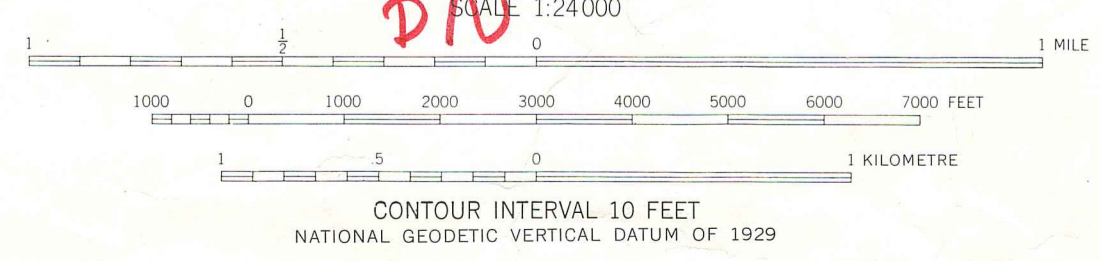
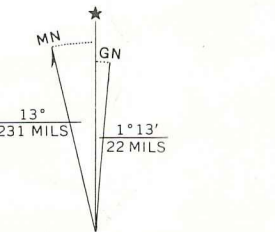
These materials are offered in the spirit of open government. Reproduction of these manuscripts was conducted to the highest practical degree, within the parameters of the funding mechanism. Original documents are available for inspection by contacting the Connecticut State Geologist.

Interpretation geology (nt days - 4 July 1977) 26 June 1978



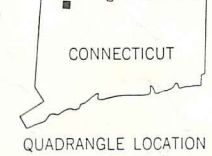
*Un-
lithanitic
? Og
Ordovician?
granite
gneiss
OEs
Stockbridge
member
Ed
Deltan
formation
Taeic slid
Em
Manhattan
schist
Emcu
Canaan Mtn.
phase of
Manhattan
schist,
upper
slice
Emcu
Basal member
of Canaan
Mtn. phase
of Manhattan
schist
(cf. Dalton fm.)
Emcu
Canaan Mtn.
phase of
Manhattan
schist,
lower
slice
PERS
Granitic gneiss
PEgn
Banded gneiss
PEhg
Granulites
gneiss +
amphibolite
PERS
rusty schist
+ gneiss*

Mapped, edited, and published by the Geological Survey
Control by USGS, USC&GS, and Connecticut Geodetic Survey
Topography from aerial photographs by multiplex methods
Aerial photographs taken 1944. Field check 1948
Revised 1956
Polyconic projection. 1927 North American datum
10,000-foot grid based on Connecticut coordinate system
1000-metre Universal Transverse Mercator grid ticks,
zone 18, shown in blue
Fine red dashed lines indicate selected fence and field lines
visible on aerial photographs. This information is unchecked



ROAD CLASSIFICATION

Heavy-duty	Light-duty
Medium-duty	Unimproved dirt
U.S. Route	State Route



THIS MAP COMPLIES WITH NATIONAL MAP ACCURACY STANDARDS
FOR SALE BY U.S. GEOLOGICAL SURVEY, RESTON, VIRGINIA 22092
A FOLDER DESCRIBING TOPOGRAPHIC MAPS AND SYMBOLS IS AVAILABLE ON REQUEST

Revisions shown in purple compiled in cooperation with
Connecticut Highway Department from aerial photographs taken 1969
This information not field checked
Areas covered by dashed light-purple pattern are subject to controlled
inundation

NORFOLK, CONN.
N4152.5-W7307.5/7.5
1956
PHOTOREVISED 1969
AMS 6367 1 NW-SERIES V816