

# Sharon Rodgers Bedrock Compilation Sheet 2 (paper)

## Map

### NOTICE !

Bedrock quadrangle 1:24,000 scale compilation sheets for the Bedrock Geological Map of Connecticut, John Rodgers, 1985, Connecticut Geological and Natural History Survey, Department of Environmental Protection, Hartford, Connecticut, in Cooperation with the U.S. Geological Survey, 1:125,000 scale, 2 sheets. [minimum 116 paper quad compilations with mylar overlays constituting the master file set for geologic lines and units compiled to the State map, some quads have multiple sheets depicting iterations of mapping]. Compilations drafted by Nancy Davis, Craig Dietsch, and Nat Gibbons under the direction of John Rodgers.

Geologic unit designation table translates earlier map unit nomenclature to the units ultimately used in the State publication.

This map set contains unpublished maps, cross-sections, and related information archived by the State Geological and Natural History Survey of Connecticut as part of the Survey Library Collection.

These materials have not been reviewed for accuracy, consistency, or completeness. For many geographic areas, more current information exists, either in published or unpublished form. These materials were developed under research and mapping agreements between the State Geological Survey and individual scientists, academic institutions, or graduate students. The veracity of the information contained within these documents is the responsibility of the authorship. The State Geological and Natural History Survey of Connecticut, does not promote or endorse this content, nor does the State Survey attest as to its level of accuracy.

These materials have been preserved under a cooperative agreement between the State Geological Survey and the US Geological Survey as part of the National Geological and Geophysical Data Preservation Program. [www.datapreservation.usgs.gov](http://www.datapreservation.usgs.gov)

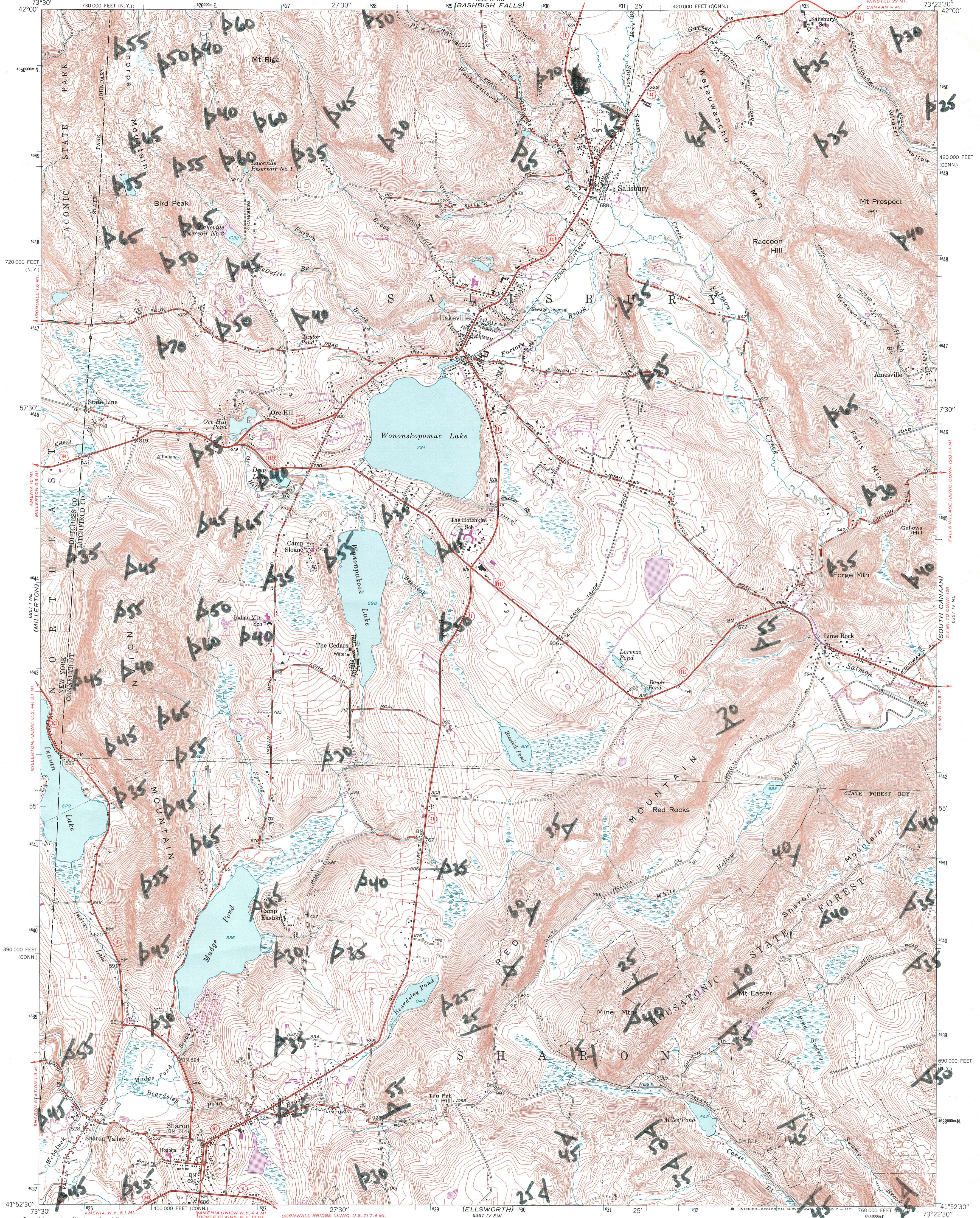
These materials are offered in the spirit of open government. Reproduction of these manuscripts was conducted to the highest practical degree, within the parameters of the funding mechanism. Original documents are available for inspection by contacting the Connecticut State Geologist.

UNITED STATES  
DEPARTMENT OF THE INTERIOR  
GEOLOGICAL SURVEY

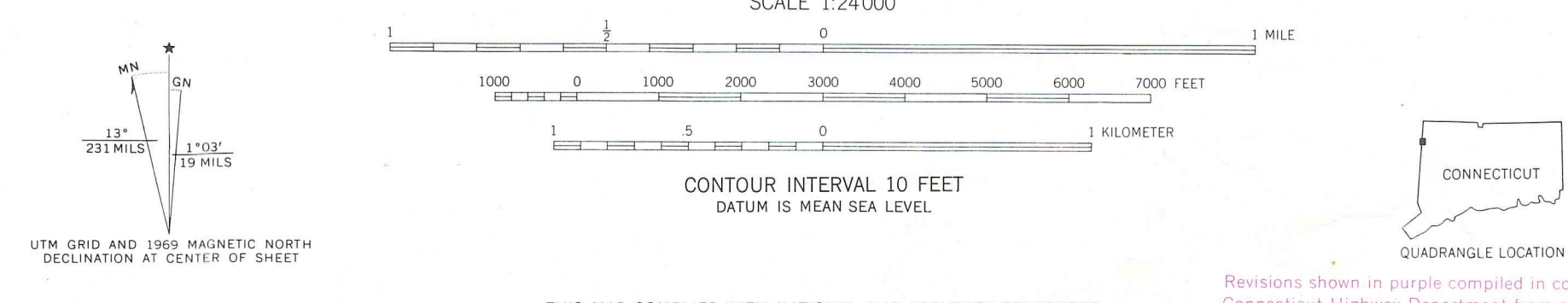
STATE OF CONNECTICUT  
HIGHWAY DEPARTMENT

SHARON QUADRANGLE  
CONNECTICUT-NEW YORK  
7.5 MINUTE SERIES (TOPOGRAPHIC)

*OK SJmctm 14 July 1977*



Mapped, edited, and published by the Geological Survey  
Control by USGS, USC&GS, and Connecticut Geodetic Survey  
Topography from aerial photographs by multiplex methods  
Aerial photographs taken 1941 and 1944. Field check 1948  
Revised 1956  
Polyconic projection. 1927 North American datum  
10,000-foot grid based on Connecticut coordinate system  
and New York coordinate system, east zone  
1000-meter Universal Transverse Mercator grid ticks,  
zone 18, shown in blue  
Fine red dashed lines indicate selected fence and field lines  
visible on aerial photographs. This information is unchecked



ROAD CLASSIFICATION

Heavy-duty	Light-duty
Medium-duty	Unimproved dirt
U.S. Route	State Route

SHARON, CONN.—N. Y.  
N4152.5—W7322.5/7.5  
1956  
PHOTOREVISED 1969  
AMS 6367 IV NW—SERIES V816

THIS MAP COMPLIES WITH NATIONAL MAP ACCURACY STANDARDS  
FOR SALE BY U. S. GEOLOGICAL SURVEY, WASHINGTON, D. C. 20242  
A FOLDER DESCRIBING TOPOGRAPHIC MAPS AND SYMBOLS IS AVAILABLE ON REQUEST

(16)