

Oxford Rodgers Bedrock Compilation Sheet (paper)

Map

NOTICE !

Bedrock quadrangle 1:24,000 scale compilation sheets for the Bedrock Geological Map of Connecticut, John Rodgers, 1985, Connecticut Geological and Natural History Survey, Department of Environmental Protection, Hartford, Connecticut, in Cooperation with the U.S. Geological Survey, 1:125,000 scale, 2 sheets. [minimum 116 paper quad compilations with mylar overlays constituting the master file set for geologic lines and units compiled to the State map, some quads have multiple sheets depicting iterations of mapping]. Compilations drafted by Nancy Davis, Craig Dietsch, and Nat Gibbons under the direction of John Rodgers.

Geologic unit designation table translates earlier map unit nomenclature to the units ultimately used in the State publication.

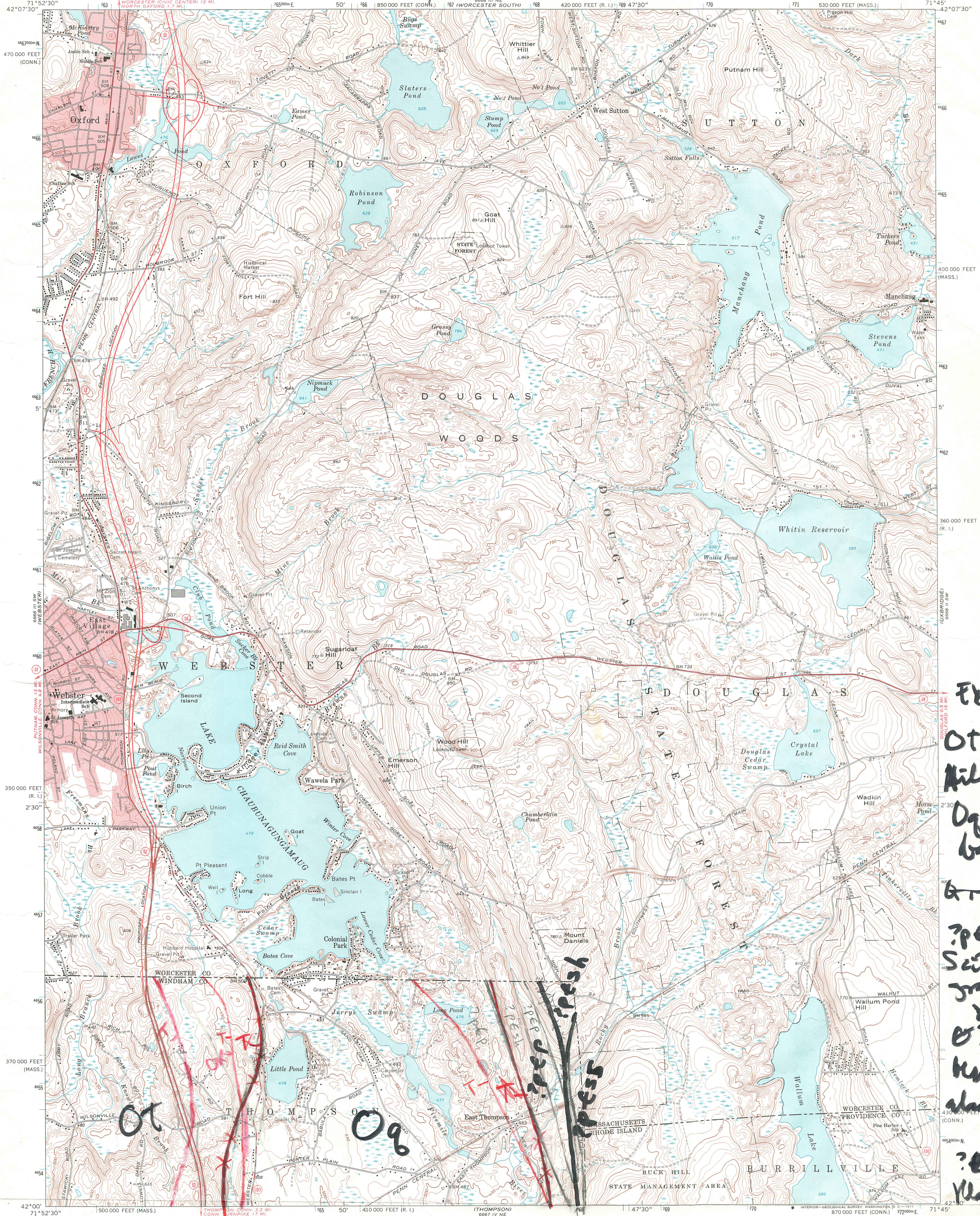
This map set contains unpublished maps, cross-sections, and related information archived by the State Geological and Natural History Survey of Connecticut as part of the Survey Library Collection.

These materials have not been reviewed for accuracy, consistency, or completeness. For many geographic areas, more current information exists, either in published or unpublished form. These materials were developed under research and mapping agreements between the State Geological Survey and individual scientists, academic institutions, or graduate students. The veracity of the information contained within these documents is the responsibility of the authorship. The State Geological and Natural History Survey of Connecticut, does not promote or endorse this content, nor does the State Survey attest as to its level of accuracy.

These materials have been preserved under a cooperative agreement between the State Geological Survey and the US Geological Survey as part of the National Geological and Geophysical Data Preservation Program. www.datapreservation.usgs.gov

These materials are offered in the spirit of open government. Reproduction of these manuscripts was conducted to the highest practical degree, within the parameters of the funding mechanism. Original documents are available for inspection by contacting the Connecticut State Geologist.

Int. Interpretation Catalog 17, 20 July 1978



*Excl.
Ot-Tate
Mill formation
Dg-Quine
burg fm
?Pess-
Sait water
granite
quartz
B? p tsh-
New Valley
alabaster
quartz
?B p f
Manfield
fm.*

Maped, edited, and published by the Geological Survey
Revised in cooperation with Massachusetts Department of Public Works
Control by USGS, USC&GS, and Massachusetts Geodetic Survey
Topography by planetable surveys 1942-43. Revised from aerial
photographs taken 1966. Field checked 1969
Polyconic projection. 1927 North American datum
10,000-foot grids based on Massachusetts coordinate system,
mainland zone. Connecticut coordinate system, and Rhode Island
coordinate system
1000-meter Universal Transverse Mercator grid ticks,
zone 19, shown in blue
Fine red dashed lines indicate selected fence and tick lines where
generally visible on aerial photographs. This information is unchecked
Red tint indicates areas in which only landmark buildings are shown

SCALE 1:24,000
CONTOUR INTERVAL 10 FEET
DATUM IS MEAN SEA LEVEL

ROAD CLASSIFICATION
Primary highway, all weather, hard surface
Secondary highway, all weather, hard surface
Light-duty road, all weather, improved surface
Unimproved road, fair or dry weather

OXFORD, MASS.—CONN.—R. I.
N4200—W7145/7.5
1969
AMS 6668 III SE—SERIES V814