

# South Coventry Bedrock Outcrop Map

Map

## NOTICE !

This document contains unpublished maps, cross- sections, and related information archived by the State Geological and Natural History Survey of Connecticut as part of the Survey Library Collection.

These materials have not been reviewed for accuracy, consistency, or completeness. For many geographic areas, more current information exists, either in published or unpublished form.

For the most part, these materials were developed under research and mapping agreements between the State Geological Survey and individual scientists, academic institutions, or graduate students. Some of these materials have been received by the State Geological Survey as donations. The veracity of the information contained within these documents is the responsibility of the authorship. The State Geological and Natural History Survey of Connecticut, does not promote or endorse this content, nor does the State Survey attest as to its level of accuracy.

These materials have been preserved under a cooperative agreement between the State Geological Survey and the US Geological Survey as part of the National Geological and Geophysical Data Preservation Program. [www.datapreservation.usgs.gov](http://www.datapreservation.usgs.gov)

These materials are offered in the spirit of open government. Reproduction of these manuscripts was conducted to the highest practical degree, within the parameters of the funding mechanism. Original documents are available for inspection by contacting the [Connecticut State Geologist](#).



TOPOP

BEDROCK  
OUTCROPS  
South Coventry  
1/24/75  
SOUTH COVENTRY QUADRANGLE

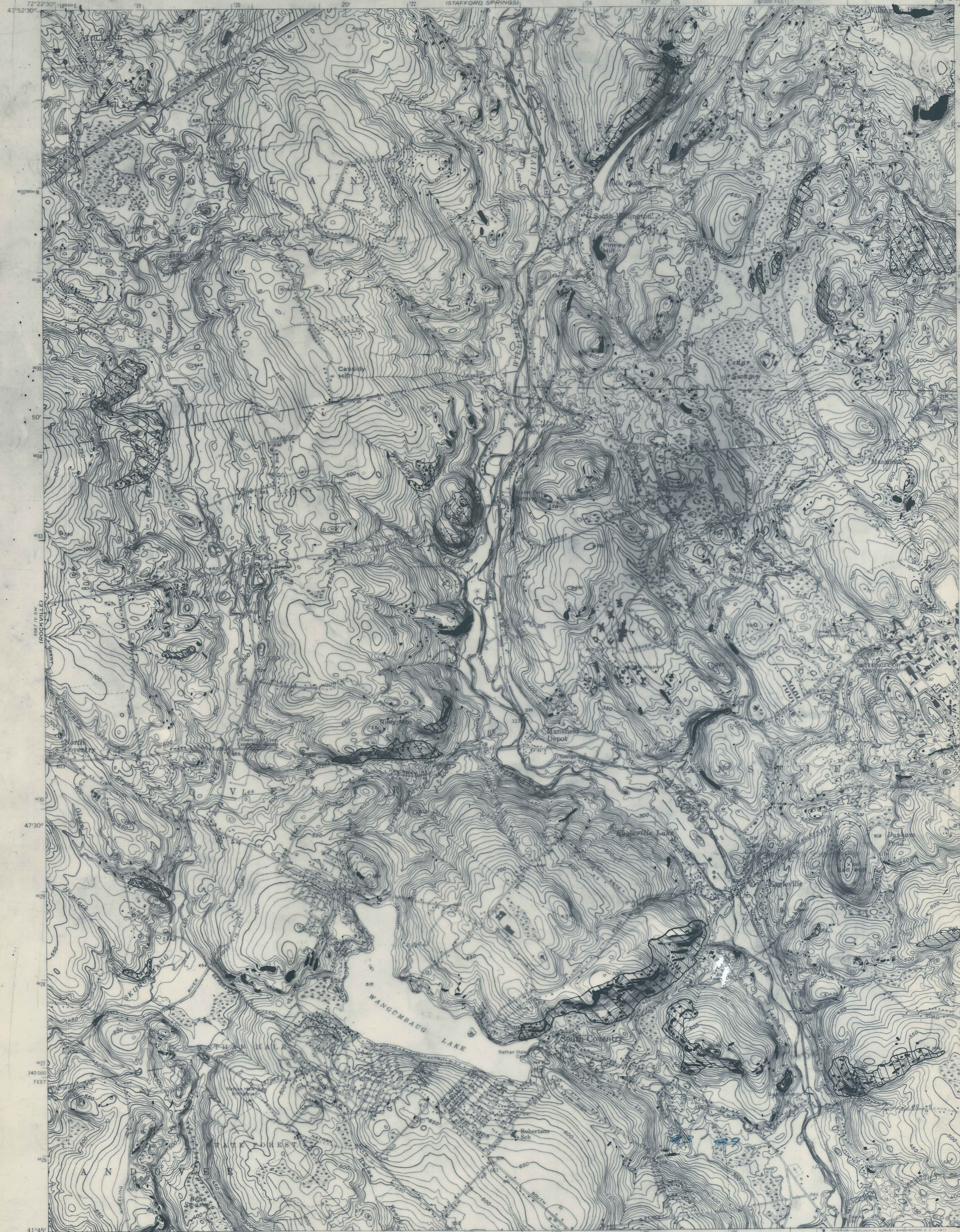
WILLINGTON

UNITED STATES  
DEPARTMENT OF THE INTERIOR  
GEOLOGICAL SURVEY

PREPARED IN COOPERATION WITH THE  
STATE OF CONNECTICUT  
GEOLOGICAL AND NATURAL HISTORY SURVEY

SOUTH COVENTRY QUADRANGLE  
CONNECTICUT—TOLLAND CO.  
7.5 MINUTE SERIES (TOPOGRAPHIC)

WESTFORD



50 ft ABLL

29437

29437

CREATED BY

1. SHAPES AND POSITIONS  
OF OUTCROPS ONLY

Mapped, edited, and published by the Geological Survey

Control by USGS, USC&GS, and Connecticut Geodetic Survey

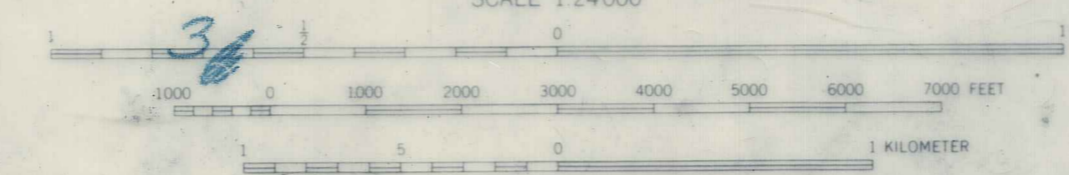
Topography by plane-table surveys 1943. Revised 1953

Polyconic projection. 1927 North American datum

10,000-foot grid based on Connecticut coordinate system

1000-meter Universal Transverse Mercator grid ticks,  
zone 18, shown in blue

Revisions shown in purple compiled in cooperation with  
Connecticut Highway Department from aerial photographs  
taken 1970. This information not field checked



ROAD CLASSIFICATION	
Heavy duty	Light-duty
Medium-duty	Unimproved dirt
U.S. Route	State Route
Interstate Route	

SOUTH COVENTRY, CONN.

N4145-W7215/7.5

1953  
PHOTOREVISED 1970  
AMS 6567 IV SE-SERIES V816

Map Showing Bedrock Outcrops  
to accompany the  
PRELIMINARY BEDROCK GEOLOGICAL MAP OF THE SOUTH COVENTRY QUADRANGLE,  
TOLLAND COUNTY, CONNECTICUT  
by Richard G. [Name] and George H. Pease, Jr., 1976

PIBP