

Mystic Quadrangle Bedrock Geology Map w/ Cross-Sections

Richard Goldsmith

Cross-Sections Map

Preliminary Bedrock Geologic Map of the Mystic Quadrangle - Conn., NY, RI - 1975

NOTICE !

This document contains unpublished maps, cross- sections, and related information archived by the State Geological and Natural History Survey of Connecticut as part of the Survey Library Collection.

These materials have not been reviewed for accuracy, consistency, or completeness. For many geographic areas, more current information exists, either in published or unpublished form.

For the most part, these materials were developed under research and mapping agreements between the State Geological Survey and individual scientists, academic institutions, or graduate students. Some of these materials have been received by the State Geological Survey as donations. The veracity of the information contained within these documents is the responsibility of the authorship. The State Geological and Natural History Survey of Connecticut, does not promote or endorse this content, nor does the State Survey attest as to its level of accuracy.

These materials have been preserved under a cooperative agreement between the State Geological Survey and the US Geological Survey as part of the National Geological and Geophysical Data Preservation Program. www.datapreservation.usgs.gov

These materials are offered in the spirit of open government. Reproduction of these manuscripts was conducted to the highest practical degree, within the parameters of the funding mechanism. Original documents are available for inspection by contacting the [Connecticut State Geologist](#).

UNITED STATES
DEPARTMENT OF THE INTERIOR
GEOLOGICAL SURVEY

STATE OF CONNECTICUT
HIGHWAY DEPARTMENT

Prepared in cooperation with
THE STATE OF CONNECTICUT
Geological and Natural History Survey

MYSTIC QUADRANGLE
CONNECTICUT-NEW YORK-RHODE ISLAND
7.5 MINUTE SERIES (TOPOGRAPHIC)



Mapped, edited, and published by the Geological Survey
Control by USGS, USC&GS, USCE, and Connecticut Geological Survey
Topography by planetable surveys 1942. Revised 1958
Hydrography compiled from USC&GS charts 358 (1957), 359 (1958)
and 1211 (1950)
Polyconic projection. 1927 North American datum
10,000-foot grids based on Connecticut coordinate system
New York coordinate system, Long Island zone, and Rhode Island
coordinate system
1000 meter Universal Transverse Mercator grid ticks,
zone 19, shown in blue
Revisions shown in purple compiled in cooperation with
Connecticut Highway Department from aerial photographs taken 1970
This information not field checked



SCALE 1:24,000
1 0 1000 2000 3000 4000 5000 6000 7000 8000 9000 10000 FEET
1 0 1 2 3 4 5 6 7 8 9 10 KILOMETERS

CONTOUR INTERVAL 10 FEET
DATUM IS MEAN SEA LEVEL
DEPTH CURVES AND SOUNDINGS IN FEET-DATUM IS MEAN LOW WATER
SHOULDER SHOWN REPRESENTS THE APPROXIMATE LINE OF MEAN HIGH WATER
THE MEAN RANGE OF TIDE IS APPROXIMATELY 2.7 FEET

PRELIMINARY BEDROCK GEOLOGIC MAP OF THE MYSTIC QUADRANGLE, CONN., N.Y., R.I.
Richard Goldsmith

THIS MAP COMPLIES WITH NATIONAL MAP ACCURACY STANDARDS
FOR SALE BY U.S. GEOLOGICAL SURVEY, WASHINGTON, D.C. 20242
A FOLDER DESCRIBING TOPOGRAPHIC MAPS AND SYMBOLS IS AVAILABLE ON REQUEST
1975

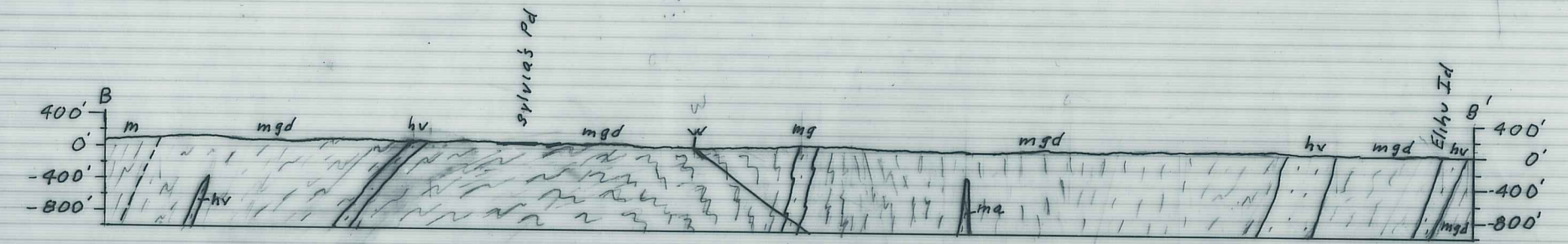
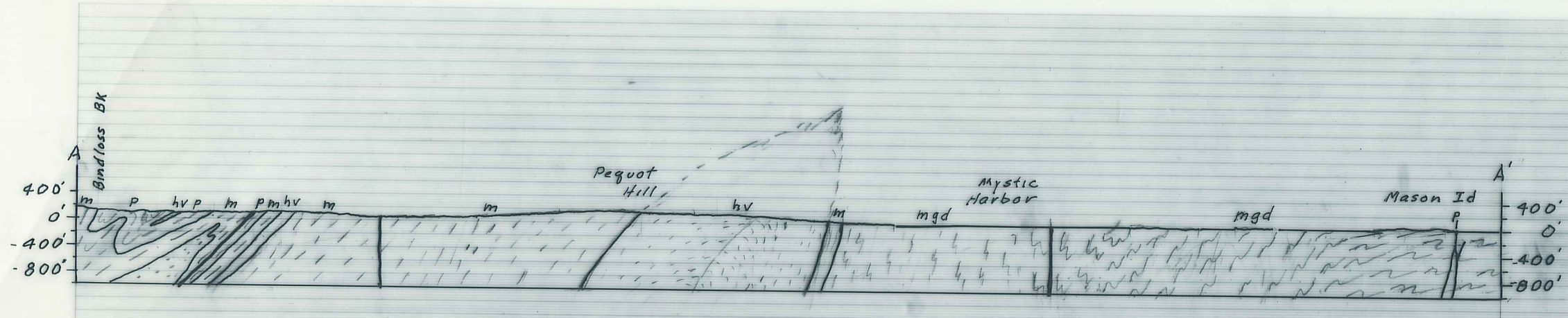
ROAD CLASSIFICATION
Heavy-duty ——— Light-duty ———
Medium-duty ——— Unimproved dirt ———
U.S. Route ——— State Route ———
Interstate Route ———

MYSTIC, CONN. - N.Y. - R.I.
N4115-W7152-5175

1958
PHOTOREVISED 1970
AMS 6646 IV SW-SERIES V719

SPECIAL PRINTING
Contours and woodland symbols omitted

Mystic X-Sections



Scale 1:6000

Scale

I