

Glenville Quadrangle Bedrock Geology Foliation Map

Leo M. Hall

Map

NOTICE !

This document contains unpublished maps, cross-sections, and related information archived by the State Geological and Natural History Survey of Connecticut as part of the Survey Library Collection.

These materials have not been reviewed for accuracy, consistency, or completeness. For many geographic areas, more current information exists, either in published or unpublished form.

For the most part, these materials were developed under research and mapping agreements between the State Geological Survey and individual scientists, academic institutions, or graduate students. Some of these materials have been received by the State Geological Survey as donations. The veracity of the information contained within these documents is the responsibility of the authorship. The State Geological and Natural History Survey of Connecticut, does not promote or endorse this content, nor does the State Survey attest as to its level of accuracy.

These materials have been preserved under a cooperative agreement between the State Geological Survey and the US Geological Survey as part of the National Geological and Geophysical Data Preservation Program. www.datapreservation.usgs.gov

These materials are offered in the spirit of open government. Reproduction of these manuscripts was conducted to the highest practical degree, within the parameters of the funding mechanism. Original documents are available for inspection by contacting the [Connecticut State Geologist](#).

Foliation Map - Glenville Quadrangle

Les M. Hall

Original at University of Massachusetts

UNITED STATES
DEPARTMENT OF THE INTERIOR
GEOLOGICAL SURVEY

STATE OF CONNECTICUT
HIGHWAY DEPARTMENT

(OSSINING)

73°45'
41°07'30"

TACONIC STATE PKWY 7.2 MI
CHAPPAQUA 2.9 MI

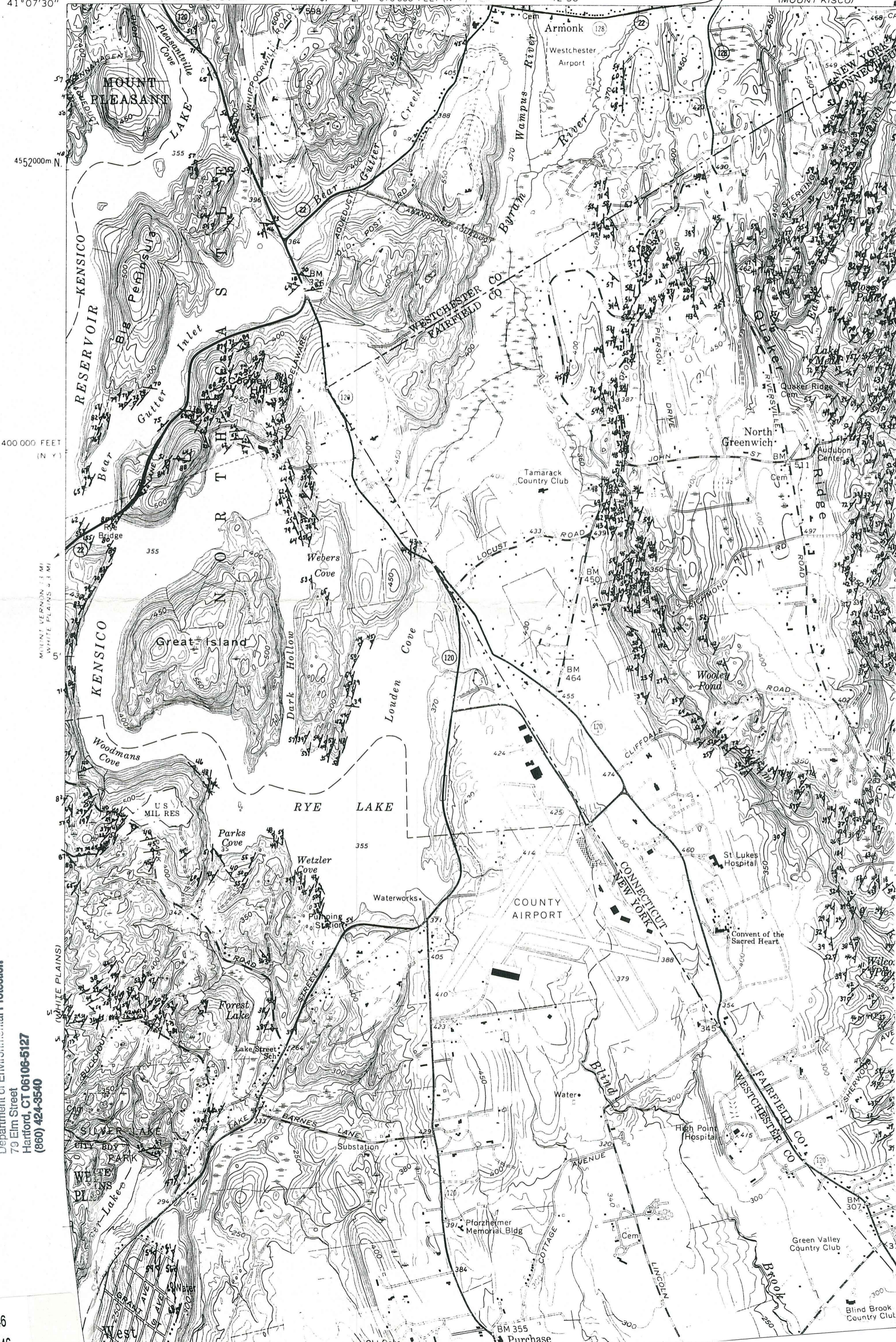
607000m.E

670000 FEET (N Y)

MT. KISCO 5.4 MI
42'30"

KATONAH 12 MI
BEDFORD 7 MI

(MOUNT KISCO)



Connecticut Geological and Natural History Survey Library
Department of Environmental Protection
79 Elm Street
Hartford, CT 06106-5127
(860) 424-3540

m557.46



100 000 FEET
(CONN)

3.1 MI TO INTERCHANGE 34
BRIDGEPORT 27 MI

3.2 MI TO U.S. 1

(STAMFORD)

2'30"

UND. 4.4 M



3.2 MI. TO U.S. 1
STAMFORD
2'30"
STAMFORD 4.9 MI.
STAMFORD 4.6 MI.
370 000 FEET
N.Y.
4540000m N.
41°00'

(MAMARONECK) 1.2 MI. TO INTERSTATE 95
40° RYE 1.9 MI. NEW ROCHELLE 9.1 MI. 690 000 FEET (N. Y.) INTERIOR- GEOLOGICAL SURVEY WASHINGTON D. C. - 1962
NEW ENGLAND THRUWAY INTERCHANGE (3) 2 MI. 615000m E. 73°37'30"



GREENWICH
RIVERSVILLE
GLENVILLE
ROCK RIDGE
PEMBERWICK
PORT CHESTER
Belle Haven

St. Luke's Hospital
Convent of the Sacred Heart
Green Valley Country Club
Blind Brook Country Club
Blind Brook Polo Club
Ridge St. Country Sch.
Upper Ridge Road Sch.
Resurrection Convent
Harkness Home
Kings Street Sch.
Temple Knesses Eifereth Israel
Park Ave Sch.
Memorial Park
Edison Sch.
Sacred Heart Sch.
New Lebanon Sch.

INTERCHANGE 28
INTERCHANGE 27
INTERCHANGE 3
INTERCHANGE 4

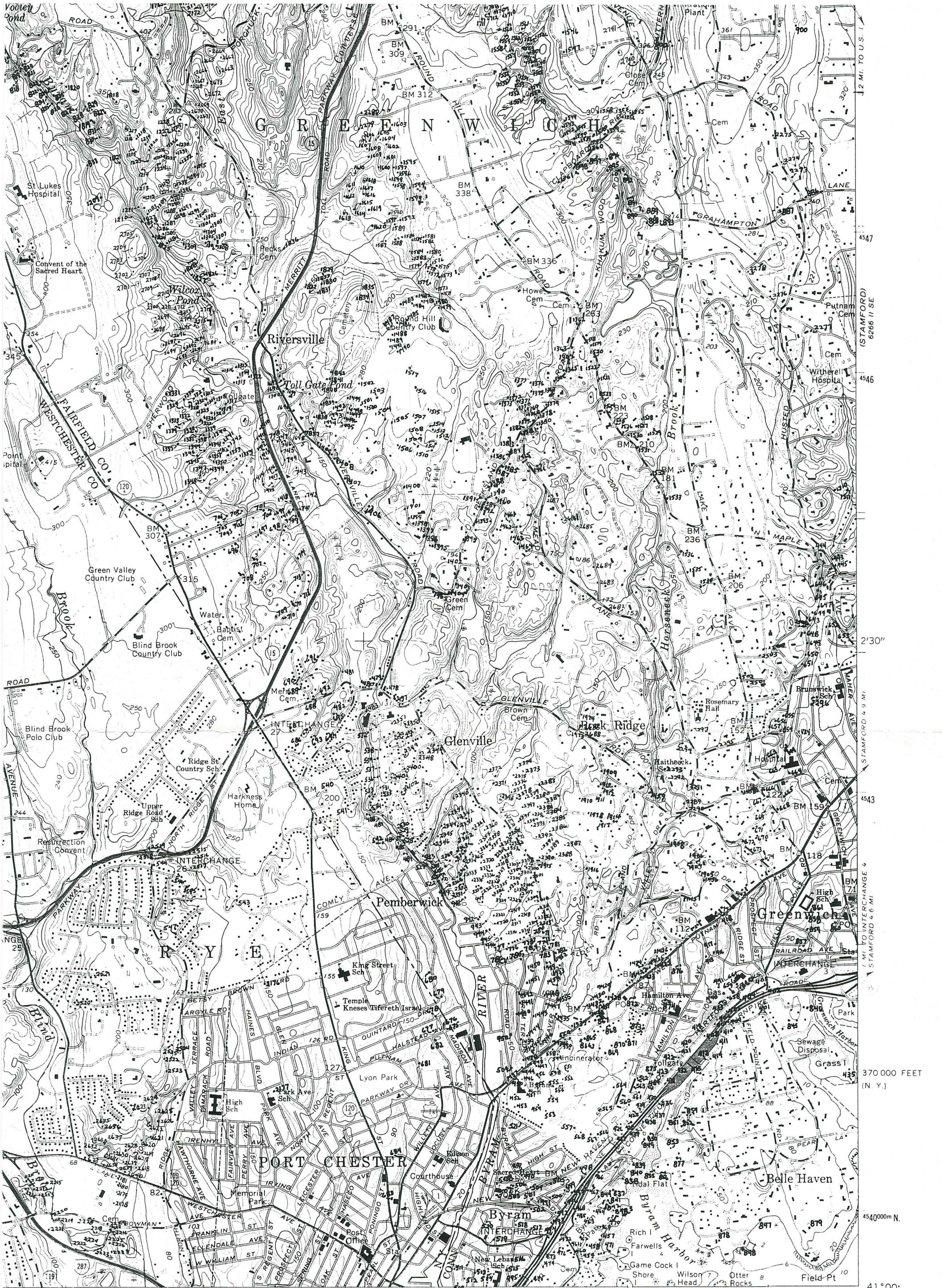
Putnam
Spillway Elev 303
Filtration Plant
Close Cem.
Howe Cem.
Green Cem.
MeBritt Cem.
Glenville Cem.
Haithecock Sch.
Rosemary Hall
Brunswick Sch.
Hospital
High Sch.
Hamilton Ave Sch.
St. Roch Sch.
St. Ann Sch.
St. Joseph Sch.
St. Peter Sch.
St. Paul Sch.
St. James Sch.
St. John Sch.
St. Mary Sch.
St. Elizabeth Sch.
St. Anthony Sch.
St. Francis Sch.
St. Vincent Sch.
St. Rose Sch.
St. Ann Sch.
St. Joseph Sch.
St. Peter Sch.
St. Paul Sch.
St. James Sch.
St. John Sch.
St. Mary Sch.
St. Elizabeth Sch.
St. Anthony Sch.
St. Francis Sch.
St. Vincent Sch.
St. Rose Sch.

BM 291
BM 309
BM 312
BM 338
BM 336
BM 1263
BM 223
BM 210
BM 181
BM 236
BM 307
BM 315
BM 200
BM 112
BM 118
BM 71
BM 159

41° 00'
73° 37' 30"

690 000 FEET (N. Y.)
615 000m E.

1.2 MI. TO INTERSTATE 95
1.9 MI. TO RYE
9.1 MI. TO NEW ROCHELLE
1.2 MI. TO INTERCHANGE 13
4.6 MI. TO NEW ROCHELLE

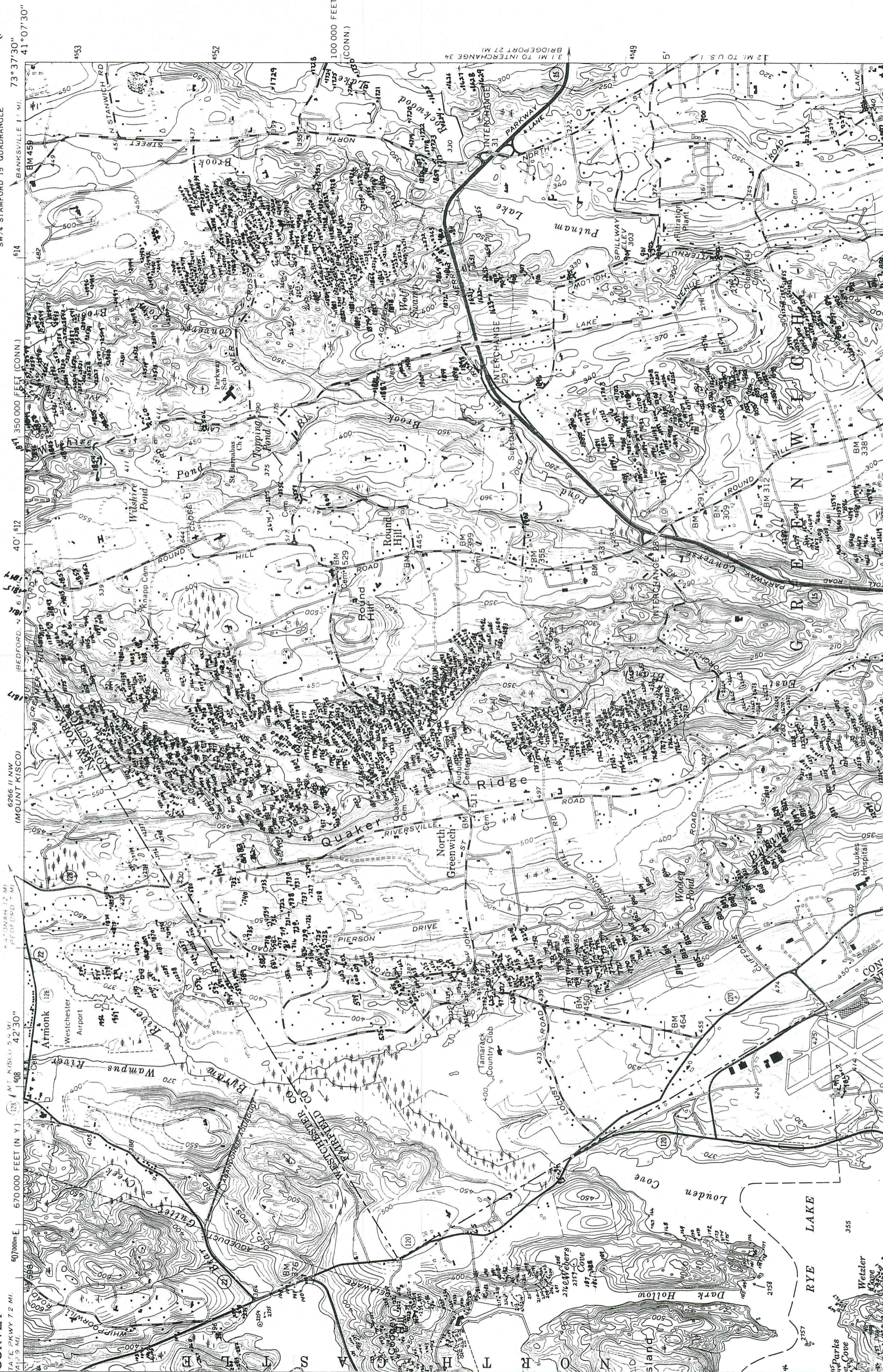


TO U.S. 1 (MAMARONECK) 6265 1 NW 1.2 MI. TO INTERSTATE 95
 SCALE 1:24,000
 1000 2000 3000 4000 5000 6000 7000 FEET
 1 KILOMETER
 CONTOUR INTERVAL 10 FEET
 DATUM IS MEAN SEA LEVEL
 WAVES AND SOUNDINGS IN FEET—DATUM IS MEAN LOW WATER
 LINE SHOWN REPRESENTS THE APPROXIMATE LINE OF MEAN HIGH WATER
 THE MEAN RANGE OF TIDE IS APPROXIMATELY 7.3 FEET

Station Map
 Leo M. Hall - Glenville Quadrangle
 original house at Univ. of Massachusetts

ROAD CLASSIFICATION
 Limited Access
 Unimproved dirt
 U.S. Route
 State Route

GLENVILLE, CONN.—N. Y.
 SW 4 STAMFORD 15 QUADRANGLE



67°00'00"E 670,000 FEET (N. Y.) 128 1 MI. KISLU 5.9 MI. 608 42'30" 6266 (MOUNT KISCO) 61 62 612 614 616 618 620 622 624 626 628 630 632 634 636 638 640 642 644 646 648 650 652 654 656 658 660 662 664 666 668 670 672 674 676 678 680 682 684 686 688 690 692 694 696 698 700 702 704 706 708 710 712 714 716 718 720 722 724 726 728 730 732 734 736 738 740 742 744 746 748 750 752 754 756 758 760 762 764 766 768 770 772 774 776 778 780 782 784 786 788 790 792 794 796 798 800 802 804 806 808 810 812 814 816 818 820 822 824 826 828 830 832 834 836 838 840 842 844 846 848 850 852 854 856 858 860 862 864 866 868 870 872 874 876 878 880 882 884 886 888 890 892 894 896 898 900 902 904 906 908 910 912 914 916 918 920 922 924 926 928 930 932 934 936 938 940 942 944 946 948 950 952 954 956 958 960 962 964 966 968 970 972 974 976 978 980 982 984 986 988 990 992 994 996 998 1000

