



NORTHEAST-MIDWEST
STATE FORESTERS
ALLIANCE

Urban & Community Forestry Committee

URBAN FORE\$TRY FACTS

CONNECTICUT



ECONOMIC SECTORS

PRIVATE SECTOR

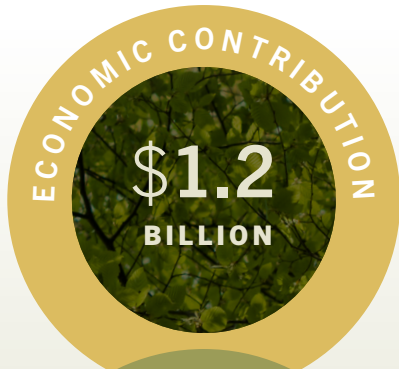
INVESTOR-OWNED UTILITIES

MUNICIPAL GOVERNMENT

STATE AGENCY

HIGHER EDUCATION INSTITUTIONS

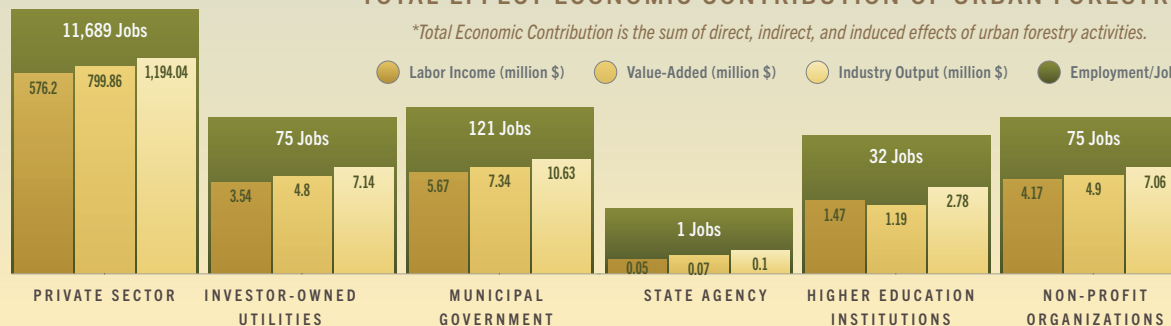
NON-PROFIT ORGANIZATIONS



TOTAL EFFECT ECONOMIC CONTRIBUTION OF URBAN FORESTRY*

*Total Economic Contribution is the sum of direct, indirect, and induced effects of urban forestry activities.

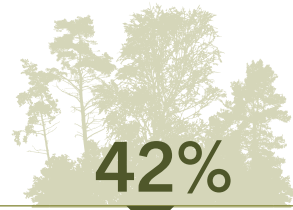
● Labor Income (million \$) ● Value-Added (million \$) ● Industry Output (million \$) ● Employment/Jobs





NORTHEAST-MIDWEST
**STATE FORESTERS
ALLIANCE**

Urban & Community Forestry Committee

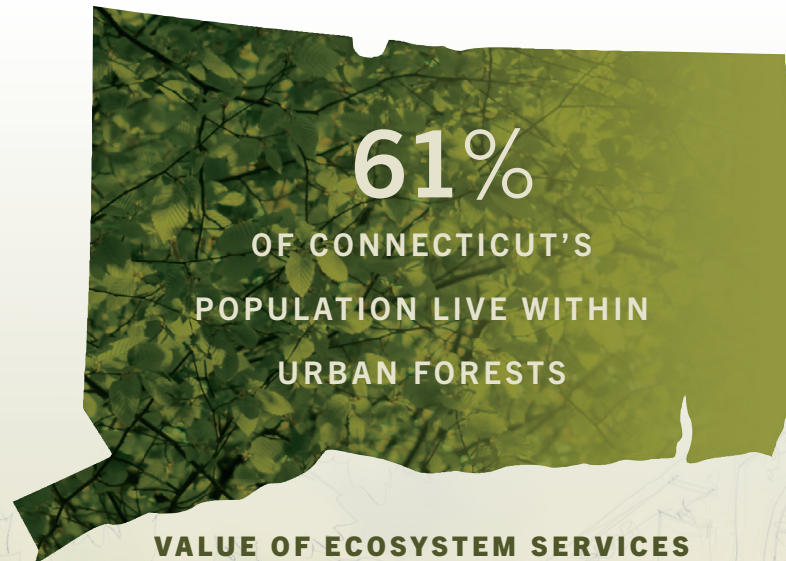


42%

OF CONNECTICUT'S COMMUNITY LAND IS COVERED WITH CANOPY



**DIRECT TAX CONTRIBUTION
OF URBAN FORESTRY**



VALUE OF ECOSYSTEM SERVICES

\$109.6 million/year

\$41.7 MILLION FROM THE REMOVAL OF AIR POLLUTANTS

\$21.8 MILLION FROM THE REDUCTION OF STORMWATER

\$46.1 MILLION FROM THE SEQUESTRATION OF CARBON



**STATE & LOCAL
TAX CONTRIBUTION
FEDERAL**



This project was made possible by a grant from the USDA Forest Service, an equal opportunity provider, employer, and lender.

Please visit <http://www.nmsfa.org> to view online or download a copy of the full report.

