

CT DEEP FISHERIES DIVISION  
FALL/WINTER 2024/2025  
TROUT AND SALMON STOCKING



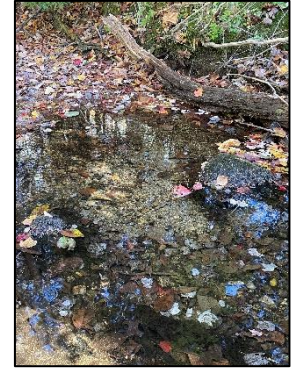
YOU CAN FIND US DIRECTLY ON FACEBOOK or on Instagram. This page features a variety of information on fishing, hunting, and wildlife watching in Connecticut. The address is [www.facebook.com/CTFishandWildlife](https://www.facebook.com/CTFishandWildlife) and [www.instagram.com/ctfishandwildlife](https://www.instagram.com/ctfishandwildlife)

### STOCKING UPDATE AS OF 12/19/2024:

We have stocked 49,085 trout and 1,762 Atlantic Salmon since September 9<sup>th</sup> across Connecticut lakes/ponds and rivers/streams. The focus in December is [Atlantic Salmon](#) in the Naugatuck and Shetucket Rivers and [Seeforellen Brown Trout](#) in lakes and ponds, which are both raised at Kensington State Fish Hatchery.

“The Daily Cast” – Broodstock Atlantic Salmon to the Naugatuck TMA today!! Please get out and target one of these beasts and when you land one make sure to report the tag number to us along with date, time, and location of your catch. Thanks!

Attention anglers wading in rivers/streams: The timing of trout spawning can vary by year, conditions, and species and activity continues across the state and redds are present and well-developed. Trout redds are oval or teardrop shaped depressions in small gravels where the substrate looks like someone swept it clean. They are used to deposit and incubate eggs. The size and shape can vary quite a bit and depend on the length of the fish (see pictures below). Please be aware of these highly sensitive spawning areas and do not trample or disturb the area in and around them.



Reminder to please report catches of tagged Atlantic Salmon in the Shetucket and Naugatuck Rivers to the Fisheries Division using one of the following methods: 1) call 203-500-2513; 2) email [matthew.devine@ct.gov](mailto:matthew.devine@ct.gov), or 3) online at [this link](#). Please provide date, tag number, specific location caught (GPS coordinates ideally), and whether the fish was released or harvested. **PLEASE DO NOT REMOVE TAG FROM FISH.** Reported tag numbers will be integral to data collection and help build our understanding of movement, behavior, and when, where, and how often they are caught. Thanks to those who have reported their catches already! We are over 300 tag reports! Don't be shy, please call/email/submit online to help us improve the fishery.



The following is a list of waters planned to be stocked by the Fisheries Division during fall/winter 2024/2025. Dates will be added daily to the “Stocked” column in the table below as locations are stocked and any relevant details will be noted in the “Daily Cast” section above. Please get out and enjoy. Anglers should also check out our [Interactive Stocking map](#) for location information. Please note that due to a variety of conditions not every river/stream stocking location can be stocked on each stocking run. The information is sorted alphabetically by waterbody name first in table 1 and by town name in table 2. Questions about CT DEEP’s trout and salmon stocking may be sent to [matthew.devine@ct.gov](mailto:matthew.devine@ct.gov)

Management type abbreviations: **TMA = Trout Management Area**; **TML = Trout Management Lake**; **TTA = Trophy Trout Area**; **Trout Park**; **WTMA = Wild Trout Management Area**; **CFW = Community Fishing Waters**

The 2024 Fishing Guide is available for [download](#).  
 \*There are no changes to freshwater regulations for 2024.

Thank you for your support and please enjoy!  
 Use [FishBrain](#), the world’s largest fishing APP, for **FREE** to see CT’s regulations georeferenced to all waters. Find it on the APP Store at <https://join.fishbrain.com/connecticut>

**Table 1: Sorted by Waterbody Name**

<b>Waterbody - Management type (Alphabetically)</b>	<b>Town(s)</b>	<b>Stocked</b>
Amos Lake – TML	Preston	9/20
Beach Pond	Voluntown	9/20, 10/31 (Seefs)
Bigelow Pond	Union	9/27
Black Pond	Middlefield, Meriden	9/24, 12/4 (Seefs)
Black Pond – TML	Woodstock	11/1 (Brook Trout)
Black Rock Pond – Trout Park	Watertown	9/28, 10/11, 10/17
Blackberry River – WTMA class 3: Rte.44 to Beckley Furnace	Canaan, Norfolk	10/16
Bunnells Pond (Beardsley Park Pond) – CFW	Bridgeport	9/26
Cedar Lake	Chester	9/23
Chatfield Holllow Pond (Schreeder Pond) – Trout Park	Killingworth	9/23, 10/9, 10/21
Colony Park Pond – CFW	Ansonia	10/11
Crystal Lake TML	Ellington	9/27(A. Salmon), 10/8, 11/7 (Seefs)
Day Pond – Trout Park	Colchester	9/30, 10/9, 10/21
East Aspetuck River –WTMA 3	New Milford, New Preston	9/30
East Twin Lake – TML	Salisbury	11/25 (rainbows), 11/26 &12/3 (Seefs)
Gardner Lake	Salem, Bozrah	9/23
Farmington River (Lower Collinsville to RT 177 )- TMA	Avon, Canton, Unionville	8/29
Farmington River (Route 219 to Lower Collinsville)- TMA	New Hartford, Canton	8/29
Farmington River (RT 177 to Rt 4)	Avon, Farmington	8/29
Great Hollow Lake at Wolfe Park – Trout Park	Monroe	9/11 (Brook Trout), 9/26, 10/11, 10/21
Hammonasset River- OPEN	Clinton, Madison, Killingworth	10/9
Hammonasset River – TMA	Madison, Killingworth	10/9
Highland Lake – TML	Winchester	11/25 (rainbows), 11/26 &12/3 (Seefs)
Hockanum River – TMA	Manchester	10/25
Housatonic River (Bull’s Bridge)- TMA	Kent, Sherman, New Milford	10/17, 10/22
Housatonic River (Upper)- TMA	Cornwall, Sharon	9/26, 9/27, 10/10

<b>Waterbody - Management type (Alphabetically)</b>	<b>Town(s)</b>	<b>Stocked</b>
Long Pond – TML	<i>N. Stonington, Ledyard</i>	<i>9/20, 10/31 (Seefs)</i>
Mashapaug Lake	<i>Union</i>	<i>9/27</i>
McGovern Pond – Trout Park	<i>West Hartford</i>	<i>10/2, 10/17, 10/25</i>
Mianus River - TMA	<i>Greenwich, Stamford</i>	<i>9/25</i>
Mill River - TMA	<i>Fairfield</i>	<i>9/26</i>
Mill River (Sleeping Giant State Park) -TMA	<i>Hamden</i>	<i>10/4</i>
Mohawk Pond – TML	<i>Cornwall, Goshen</i>	<i>11/4 (Brook Trout)</i>
Mohegan Park Pond – Trout Park	<i>Norwich</i>	<i>9/13 (Brook Trout), 9/23, 10/9, 10/21</i>
Moosup River - TMA	<i>Plainfield</i>	<i>9/20</i>
Mt. Tom Pond	<i>Litchfield, Washington</i>	<i>9/20, 9/27(A. Salmon)</i>
Natchaug River - TTA	<i>Eastford, Chaplin, Windham</i>	<i>9/27</i>
Natchaug River- Trout Park	<i>Eastford</i>	<i>9/27</i>
Naugatuck River - TMA	<i>Harwinton, Litchfield</i>	<i>9/20 (trout), 10/11 (A. Salmon), 10/21 (A. Salmon), 11/5 (A. Salmon), 12/5 (A. Salmon), 12/19 (A. Salmon)</i>
Naugatuck River (Lower) – TTA	<i>Waterbury - Beacon Falls</i>	<i>10/11 (trout &amp; A. Salmon), 10/21 (A. Salmon), 11/5 (A. Salmon), 12/5 (A. Salmon)</i>
Pequabuck River (RTS 229-177) - TMA	<i>Bristol</i>	<i>10/21</i>
Pequonnock River (Trumbull Basin) - TTA Permit required for non-residents to park in Trumbull Town parks. Please call 203-452-5060 to make an appt with the P&R Dept. A valid Fishing License, Vehicle Registration, and ID are required.	<i>Trumbull</i>	<i>10/16</i>
Pickett's Pond - CFW	<i>Derby</i>	<i>10/11</i>
Pomperaug River - TTA	<i>Woodbury, Southbury</i>	<i>9/26</i>
Quinnipiac River	<i>Meriden (Greenway Trail)</i>	<i>9/9 (Brook Trout)</i>
Quonnipaug Lake – TML	<i>Guilford</i>	<i>9/23</i>
Roaring Brook – WTMA 3	<i>Glastonbury</i>	<i>10/10</i>
Rogers Lake – TML	<i>Lyme, Old Lyme</i>	<i>9/23</i>
Salmon Brook, E. Branch – WTMA 3	<i>Granby</i>	<i>10/21</i>
Salmon River – TTA	<i>Colchester, East Hampton</i>	<i>9/25</i>
Salmon River- TMA	<i>Colchester</i>	<i>9/25</i>
Saugatuck Reservoir	<i>Easton, Redding, Weston</i>	<i>12/4 (Seefs)</i>
Saugatuck River (Fly) - TMA	<i>Westport</i>	<i>10/3</i>
Scantic River (Upper)	<i>Somers, Enfield</i>	<i>10/18</i>
Shetucket River - TTA	<i>Windham, Scotland, Sprague</i>	<i>9/24 (Trout), 10/4 (Atlantic Salmon), 10/25 (A. Salmon), 11/15 (A. Salmon), 12/6 (A. Salmon)</i>
Squantz Pond – TML	<i>New Fairfield, Sherman</i>	<i>9/30, 11/6 (Seefs), 12/10 (Seefs)</i>
Stillwater Pond	<i>Torrington</i>	<i>9/20</i>
Stratton Brook Park Pond – Trout Park	<i>Simsbury</i>	<i>10/2, 10/10, 10/17</i>
Tenmile River, Bull's Bridge- TMA	<i>Kent, Sherman</i>	<i>10/17, 10/22</i>
Tyler Pond	<i>Goshen</i>	<i>10/25</i>
Valley Falls Park Pond – Trout Park	<i>Vernon</i>	<i>9/24, 10/8, 10/24</i>
Wangumbaug Lake (Coventry Lake)	<i>Coventry</i>	<i>10/24</i>
Wauregan Reservoir	<i>Killingly</i>	<i>9/20</i>
West Hill Pond – TML	<i>Barkhamsted, New Hartford</i>	<i>10/2, 11/6 (Seefs)</i>
West Side Pond	<i>Goshen</i>	<i>10/16</i>
Wharton Brook Pond – Trout Park	<i>Wallingford</i>	<i>9/24, 10/4, 10/21</i>
Willimantic River - TMA	<i>Tolland, Willington</i>	<i>9/27</i>
Yantic River- TMA	<i>Bozrah</i>	<i>9/30</i>

**Table 2: SORTED BY TOWN**

<b>Waterbody - Management type (Alphabetically)</b>	<b>Town(s)</b>	<b>Stocked</b>
Colony Park Pond – CFW	Ansonia	10/11
Farmington River (Lower Collinsville to RT 177 ) - TMA	Avon, Canton, Unionville	8/29
Farmington River (RT 177 to Rt 4) -TMA	Avon, Farmington	8/29
West Hill Pond – TML	Barkhamsted, New Hartford	10/2, 11/6 (Seefs)
Yantic River- TMA	Bozrah	9/30
Bunnells Pond (Beardsley Park Pond) – CFW	Bridgeport	9/26
Pequabuck River (RTS 229-177) - TMA	Bristol	10/21
Blackberry River – WTMA class 3: Rte.44 to Beckley Furnace	Canaan, Norfolk	10/16
Cedar Lake	Chester	9/23
Hammonasset River- OPEN	Clinton, Madison, Killingworth	10/9
Day Pond – Trout Park	Colchester	9/30, 10/9, 10/21
Salmon River- TMA	Colchester	9/25
Salmon River – TTA	Colchester, East Hampton	9/25
Mohawk Pond – TML	Cornwall, Goshen	11/4 (Brook Trout)
Housatonic River (Upper)- TMA	Cornwall, Sharon	9/26, 9/27, 10/10
Wangumbaug Lake (Coventry Lake)	Coventry	10/24
Pickett's Pond - CFW	Derby	10/11
Natchaug River- Trout Park	Eastford	9/27
Natchaug River - TTA	Eastford, Chaplin, Windham	9/27
Saugatuck Reservoir	Easton, Redding, Weston	12/4 (Seefs)
Crystal Lake - TML	Ellington	9/27(A. Salmon), 10/8, 11/7 (Seefs)
Mill River - TMA	Fairfield	9/26
Roaring Brook – WTMA3	Glastonbury	10/10
Tyler Pond	Goshen	10/25
West Side Pond	Goshen	10/16
Salmon Brook, E. Branch – WTMA 3	Granby	10/21
Mianus River – TMA	Greenwich, Stamford	9/25
Quonnipaug Lake – TML	Guilford	9/23
Mill River (Sleeping Giant State Park) -TMA	Hamden	10/4
Naugatuck River - TMA	Harwinton, Litchfield	9/20 (trout), 10/11 (A. Salmon), 10/21 (A. Salmon), 11/5 (A. Salmon), 12/5 (A. Salmon), 12/19 (A. Salmon)
Tenmile River, Bull's Bridge- TMA	Kent, Sherman	10/17, 10/22
Housatonic River (Bull's Bridge)- TMA	Kent, Sherman, New Milford	10/17, 10/22
Wauregan Reservoir	Killingly	9/20
Chatfield Hollow Pond (Schreeder Pond) – Trout Park	Killingworth	9/23, 10/9, 10/21
Mt. Tom Pond	Litchfield, Washington	9/20, 9/27(A. Salmon)
Rogers Lake – TML	Lyme, Old Lyme	9/23
Hammonasset River – TMA	Madison, Killingworth	10/9
Hockanum River – TMA	Manchester	10/25
Quinnipiac River	Meriden (Greenway Trail)	9/9 (Brook Trout)
Black Pond	Middlefield, Meriden	9/24, 12/4 (Seefs)
Great Hollow Lake at Wolfe Park – Trout Park	Monroe	9/11 (Brook Trout), 9/26, 10/11, 10/21
Long Pond – TML	N. Stonington, Ledyard	9/20, 10/31 (Seefs)
Squantz Pond – TML	New Fairfield, Sherman	9/30, 11/6 (Seefs), 12/10 (Seefs)
Farmington River (Route 219 to Lower Collinsville)	New Hartford, Canton	8/29
East Aspetuck River – WTMA 3	New Milford, New Preston	9/30
Mohegan Park Pond – Trout Park	Norwich	9/13 (Brook Trout), 9/23, 10/9, 10/21
Moosup River - TMA	Plainfield	9/20

<b>Waterbody - Management type (Alphabetically)</b>	<b>Town(s)</b>	<b>Stocked</b>
Amos Lake – TML	Preston	9/20
Gardner Lake	Salem, Bozrah	9/23
East Twin Lake – TML	Salisbury	11/25 (rainbows), 11/26 & 12/3 (Seefs)
Stratton Brook Park Pond – Trout Park	Simsbury	10/2, 10/10, 10/17
Scantic River (Upper)	Somers, Enfield	10/18
Willimantic River - TMA	Tolland, Willington	9/27
Stillwater Pond	Torrington	9/20
Pequonnock River (Trumbull Basin) - TTA Permit required for non-residents to park in Trumbull Town parks. Please call 203-452-5060 to make an appt with the P&R Dept. A valid Fishing License, Vehicle Registration, and ID are required.	Trumbull	10/16
Bigelow Pond	Union	9/27
Mashapaug Lake	Union	9/27
Valley Falls Park Pond – Trout Park	Vernon	9/24, 10/8, 10/24
Beach Pond	Voluntown	9/20, 10/31 (Seefs)
Wharton Brook Pond – Trout Park	Wallingford	9/24, 10/4, 10/21
Naugatuck River (Lower) – TTA	Waterbury - Beacon Falls	10/11 (trout & A. Salmon), 10/21 (A. Salmon), 11/5 (A. Salmon), 12/5 (A. Salmon)
Black Rock Pond – Trout Park	Watertown	9/28, 10/11, 10/17
McGovern Pond – Trout Park	West Hartford	10/2, 10/17, 10/25
Saugatuck River (Fly)- TMA	Westport	10/3
Highland Lake – TML	Winchester	11/25 (rainbows), 11/26 & 12/3 (Seefs)
Shetucket River - TTA	Windham, Scotland, Sprague	9/24 (Trout), 10/4 (Atlantic Salmon), 10/25 (A. Salmon), 11/15 (A. Salmon), 12/6 (A. Salmon)
Pomperaug River - TTA	Woodbury, Southbury	9/26
Black Pond – TML	Woodstock	11/1 (Brook Trout)