

CT DEEP FISHERIES DIVISION  
FALL/WINTER 2024/2025  
TROUT AND SALMON STOCKING



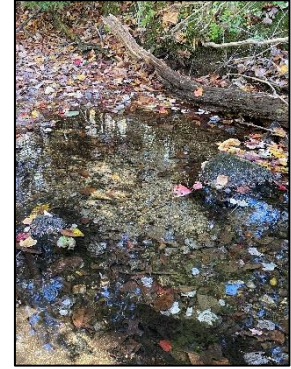
YOU CAN FIND US DIRECTLY ON FACEBOOK or on Instagram. This page features a variety of information on fishing, hunting, and wildlife watching in Connecticut. The address is [www.facebook.com/CTFishandWildlife](https://www.facebook.com/CTFishandWildlife) and [www.instagram.com/ctfishandwildlife](https://www.instagram.com/ctfishandwildlife)

## STOCKING UPDATE AS OF 11/7/2024:

We have stocked 44,935 trout and 1,325 Atlantic Salmon since September 9<sup>th</sup> across Connecticut lakes/ponds and rivers/streams. As we enter the month of November, the focus shifts to [Atlantic Salmon](#) in the Naugatuck and Shetucket Rivers and [Seeforellen Brown Trout](#) in lakes and ponds, which are both raised at Kensington State Fish Hatchery. We are waiting on a paving project and lake drawdown at Highland Lake to wrap up before stocking, and we'll get to East Twin in November after we complete a brown trout population estimate.

"The Daily Cast" – Seefs to Crystal Lake today. Above average air temperatures and very little precipitation [forecasted for the next few weeks](#). Track the water levels in your favorite river/stream using the [USGS Stream Gauge website](#). Enjoy, and please be sure to know before you go by confirming regulations using the [Freshwater Fishing Guide](#).

Attention anglers wading in rivers/streams: Trout spawning activity is widespread across the state and redds are present and well-developed. Trout redds are oval or teardrop shaped depressions in small gravels where the substrate looks like someone swept it clean. They are used to deposit and incubate eggs. The size and shape can vary quite a bit and depend on the length of the fish (see pictures below). Please be aware of these highly sensitive spawning areas and do not trample or disturb the area in and around them.



Reminder to please report catches of tagged Atlantic Salmon in the Shetucket and Naugatuck Rivers to the Fisheries Division using one of the following methods: 1) call 203-500-2513; 2) email [matthew.devine@ct.gov](mailto:matthew.devine@ct.gov), or 3) online at [this link](#). Please provide date, tag number, specific location caught (GPS coordinates ideally), and whether the fish was released or harvested.

**PLEASE DO NOT REMOVE TAG FROM FISH.** Reported tag numbers will be integral to data collection and help build our understanding of movement, behavior, and when, where, and how often they are caught. Thanks to those who have reported their catches already! We



are almost at 200 tag reports! Don't be shy, please call/email/submit online to help us improve the fishery.

The following is a list of waters planned to be stocked by the Fisheries Division during fall/winter 2024/2025. Dates will be added daily to the "Stocked" column in the table below as locations are stocked and any relevant details will be noted in the "Daily Cast" section above. Please get out and enjoy. Anglers should also check out our [Interactive Stocking map](#) for location information. Please note that due to a variety of conditions not every river/stream stocking location can be stocked on each stocking run. The information is sorted alphabetically by waterbody name first in table 1 and by town name in table 2. Questions about CT DEEP's trout and salmon stocking may be sent to [matthew.devine@ct.gov](mailto:matthew.devine@ct.gov)

Management type abbreviations: **TMA = Trout Management Area**; **TML = Trout Management Lake**; **TTA = Trophy Trout Area**; **Trout Park**; **WTMA = Wild Trout Management Area**; **CFW = Community Fishing Waters**

The 2024 Fishing Guide is available for [download](#).  
 \*There are no changes to freshwater regulations for 2024.

Thank you for your support and please enjoy!  
 Use [FishBrain](#), the world's largest fishing APP, for **FREE** to see CT's regulations georeferenced to all waters. Find it on the APP Store at <https://join.fishbrain.com/connecticut>

**Table 1: Sorted by Waterbody Name**

| <b>Waterbody - Management type (Alphabetically)</b>        | <b>Town(s)</b>                 | <b>Stocked</b>                         |
|--|--------------------------------|--|
| Amos Lake – TML  | Preston                        | 9/20                                   |
| Beach Pond   | Voluntown                      | 9/20, 10/31 (Seefs)                    |
| Bigelow Pond   | Union                          | 9/27                                   |
| Black Pond   | Middlefield, Meriden           | 9/24                                   |
| Black Pond – TML   | Woodstock                      | 11/1 (Brook Trout)                     |
| Black Rock Pond – Trout Park                               | Watertown                      | 9/28, 10/11, 10/17                     |
| Blackberry River – WTMA class 3: Rte.44 to Beckley Furnace | Canaan, Norfolk                | 10/16                                  |
| Bunnells Pond (Beardsley Park Pond) – CFW                  | Bridgeport                     | 9/26                                   |
| Cedar Lake   | Chester                        | 9/23                                   |
| Chatfield Holllow Pond (Schreeder Pond) – Trout Park       | Killingworth                   | 9/23, 10/9, 10/21                      |
| Colony Park Pond – CFW                                     | Ansonia                        | 10/11                                  |
| Crystal Lake TML   | Ellington                      | 9/27(A. Salmon), 10/8, 11/7 (Seefs)    |
| Day Pond – Trout Park                                      | Colchester                     | 9/30, 10/9, 10/21                      |
| East Aspetuck River –WTMA 3                                | New Milford, New Preston       | 9/30                                   |
| East Twin Lake – TML                                       | Salisbury                      |  |
| Gardner Lake   | Salem, Bozrah                  | 9/23                                   |
| Farmington River (Lower Collinsville to RT 177 )- TMA      | Avon, Canton, Unionville       | 8/29                                   |
| Farmington River (Route 219 to Lower Collinsville)- TMA    | New Hartford, Canton           | 8/29                                   |
| Farmington River (RT 177 to Rt 4)                          | Avon, Farmington               | 8/29                                   |
| Great Hollow Lake at Wolfe Park – Trout Park               | Monroe                         | 9/11 (Brook Trout), 9/26, 10/11, 10/21 |
| Hammonasset River- OPEN                                    | Clinton, Madison, Killingworth | 10/9                                   |
| Hammonasset River – TMA                                    | Madison, Killingworth          | 10/9                                   |
| Highland Lake – TML  | Winchester                     |  |
| Hockanum River – TMA                                       | Manchester                     | 10/25                                  |
| Housatonic River (Bull's Bridge)- TMA                      | Kent, Sherman, New Milford     | 10/17, 10/22                           |
| Housatonic River (Upper)- TMA                              | Cornwall, Sharon               | 9/26, 9/27, 10/10                      |
| Long Pond – TML  | N. Stonington, Ledyard         | 9/20, 10/31 (Seefs)                    |

| <b>Waterbody - Management type (Alphabetically)</b>  | <b>Town(s)</b>             | <b>Stocked</b>   |
|--|----------------------------|--|
| Mashapaug Lake   | Union                      | 9/27   |
| McGovern Pond – Trout Park   | West Hartford              | 10/2, 10/17, 10/25   |
| Mianus River - TMA   | Greenwich, Stamford        | 9/25   |
| Mill River - TMA   | Fairfield                  | 9/26   |
| Mill River (Sleeping Giant State Park) -TMA  | Hamden                     | 10/4   |
| Mohawk Pond – TML  | Cornwall, Goshen           | 11/4 (Brook Trout)   |
| Mohegan Park Pond – Trout Park   | Norwich                    | 9/13 (Brook Trout), 9/23, 10/9, 10/21                                |
| Moosup River - TMA   | Plainfield                 | 9/20   |
| Mt. Tom Pond   | Litchfield, Washington     | 9/20, 9/27(A. Salmon)  |
| Natchaug River - TTA   | Eastford, Chaplin, Windham | 9/27   |
| Natchaug River- Trout Park   | Eastford                   | 9/27   |
| Naugatuck River - TMA  | Harwinton, Litchfield      | 9/20 (trout), 10/11 (A. Salmon), 10/21 (A. Salmon), 11/5 (A. Salmon) |
| Naugatuck River (Lower) – TTA  | Waterbury - Beacon Falls   | 10/11 (trout & A. Salmon), 10/21 (A. Salmon), 11/5 (A. Salmon)       |
| Pequabuck River (RTS 229-177) - TMA  | Bristol                    | 10/21  |
| Pequonnock River (Trumbull Basin) - TTA<br>Permit required for non-residents to park in Trumbull Town parks. Please call 203-452-5060 to make an appt with the P&R Dept. A valid Fishing License, Vehicle Registration, and ID are required. | Trumbull                   | 10/16  |
| Pickett's Pond - CFW   | Derby                      | 10/11  |
| Pomperaug River - TTA  | Woodbury, Southbury        | 9/26   |
| Quinnipiac River   | Meriden (Greenway Trail)   | 9/9 (Brook Trout)  |
| Quonnipaug Lake – TML  | Guilford                   | 9/23   |
| Roaring Brook – WTMA 3   | Glastonbury                | 10/10  |
| Rogers Lake – TML  | Lyme, Old Lyme             | 9/23   |
| Salmon Brook, E. Branch – WTMA 3   | Granby                     | 10/21  |
| Salmon River – TTA   | Colchester, East Hampton   | 9/25   |
| Salmon River- TMA  | Colchester                 | 9/25   |
| Saugatuck River (Fly) - TMA  | Westport                   | 10/3   |
| Scantic River (Upper)  | Somers, Enfield            | 10/18  |
| Shetucket River - TTA  | Windham, Scotland, Sprague | 9/24 (Trout), 10/4 (Atlantic Salmon), 10/25 (A. Salmon)              |
| Squantz Pond – TML   | New Fairfield, Sherman     | 9/30, 11/6 (Seefs)   |
| Stillwater Pond  | Torrington                 | 9/20   |
| Stratton Brook Park Pond – Trout Park  | Simsbury                   | 10/2, 10/10, 10/17   |
| Tenmile River, Bull's Bridge- TMA  | Kent, Sherman              | 10/17, 10/22   |
| Tyler Pond   | Goshen                     | 10/25  |
| Valley Falls Park Pond – Trout Park  | Vernon                     | 9/24, 10/8, 10/24  |
| Wangumbaug Lake (Coventry Lake)  | Coventry                   | 10/24  |
| Wauregan Reservoir   | Killingly                  | 9/20   |
| West Hill Pond – TML   | Barkhamsted, New Hartford  | 10/2, 11/6 (Seefs)   |
| West Side Pond   | Goshen                     | 10/16  |
| Wharton Brook Pond – Trout Park  | Wallingford                | 9/24, 10/4, 10/21  |
| Willimantic River - TMA  | Tolland, Willington        | 9/27   |
| Yantic River- TMA  | Bozrah                     | 9/30   |

**Table 2: SORTED BY TOWN**

| <b>Waterbody - Management type (Alphabetically)</b>    | <b>Town(s)</b>           | <b>Stocked</b> |
|--|--------------------------|----------------|
| Colony Park Pond – CFW                                 | Ansonia                  | 10/11          |
| Farmington River (Lower Collinsville to RT 177 ) - TMA | Avon, Canton, Unionville | 8/29           |
| Farmington River (RT 177 to Rt 4) -TMA                 | Avon, Farmington         | 8/29           |

| <b>Waterbody - Management type (Alphabetically)</b>        | <b>Town(s)</b>                 | <b>Stocked</b>   |
|--|--------------------------------|--|
| West Hill Pond – TML                                       | Barkhamsted, New Hartford      | 10/2, 11/6 (Seefs)   |
| Yantic River- TMA  | Bozrah                         | 9/30   |
| Bunnells Pond (Beardsley Park Pond) – CFW                  | Bridgeport                     | 9/26   |
| Pequabuck River (RTS 229-177) - TMA                        | Bristol                        | 10/21  |
| Blackberry River – WTMA class 3: Rte.44 to Beckley Furnace | Canaan, Norfolk                | 10/16  |
| Cedar Lake   | Chester                        | 9/23   |
| Hammonasset River- OPEN                                    | Clinton, Madison, Killingworth | 10/9   |
| Day Pond – Trout Park                                      | Colchester                     | 9/30, 10/9, 10/21  |
| Salmon River- TMA  | Colchester                     | 9/25   |
| Salmon River – TTA   | Colchester, East Hampton       | 9/25   |
| Mohawk Pond – TML  | Cornwall, Goshen               | 11/4 (Brook Trout)   |
| Housatonic River (Upper)- TMA                              | Cornwall, Sharon               | 9/26, 9/27, 10/10  |
| Wangumbaug Lake (Coventry Lake)                            | Coventry                       | 10/24  |
| Pickett's Pond - CFW                                       | Derby                          | 10/11  |
| Natchaug River- Trout Park                                 | Eastford                       | 9/27   |
| Natchaug River - TTA                                       | Eastford, Chaplin, Windham     | 9/27   |
| Crystal Lake - TML   | Ellington                      | 9/27(A. Salmon), 10/8, 11/7 (Seefs)                                  |
| Mill River - TMA   | Fairfield                      | 9/26   |
| Roaring Brook – WTMA3                                      | Glastonbury                    | 10/10  |
| Tyler Pond   | Goshen                         | 10/25  |
| West Side Pond   | Goshen                         | 10/16  |
| Salmon Brook, E. Branch – WTMA 3                           | Granby                         | 10/21  |
| Mianus River – TMA   | Greenwich, Stamford            | 9/25   |
| Quonnipaug Lake – TML                                      | Guilford                       | 9/23   |
| Mill River (Sleeping Giant State Park) -TMA                | Hamden                         | 10/4   |
| Naugatuck River - TMA                                      | Harwinton, Litchfield          | 9/20 (trout), 10/11 (A. Salmon), 10/21 (A. Salmon), 11/5 (A. Salmon) |
| Tenmile River, Bull's Bridge- TMA                          | Kent, Sherman                  | 10/17, 10/22   |
| Housatonic River (Bull's Bridge)- TMA                      | Kent, Sherman, New Milford     | 10/17, 10/22   |
| Wauregan Reservoir   | Killingly                      | 9/20   |
| Chatfield Hollow Pond (Schreeder Pond) – Trout Park        | Killingworth                   | 9/23, 10/9, 10/21  |
| Mt. Tom Pond   | Litchfield, Washington         | 9/20, 9/27(A. Salmon)  |
| Rogers Lake – TML  | Lyme, Old Lyme                 | 9/23   |
| Hammonasset River – TMA                                    | Madison, Killingworth          | 10/9   |
| Hockanum River – TMA                                       | Manchester                     | 10/25  |
| Quinnipiac River   | Meriden (Greenway Trail)       | 9/9 (Brook Trout)  |
| Black Pond   | Middlefield, Meriden           | 9/24   |
| Great Hollow Lake at Wolfe Park – Trout Park               | Monroe                         | 9/11 (Brook Trout), 9/26, 10/11, 10/21                               |
| Long Pond – TML  | N. Stonington, Ledyard         | 9/20, 10/31 (Seefs)  |
| Squantz Pond – TML   | New Fairfield, Sherman         | 9/30, 11/6 (Seefs)   |
| Farmington River (Route 219 to Lower Collinsville)         | New Hartford, Canton           | 8/29   |
| East Aspetuck River – WTMA 3                               | New Milford, New Preston       | 9/30   |
| Mohegan Park Pond – Trout Park                             | Norwich                        | 9/13 (Brook Trout), 9/23, 10/9, 10/21                                |
| Moosup River - TMA   | Plainfield                     | 9/20   |
| Amos Lake – TML  | Preston                        | 9/20   |
| Gardner Lake   | Salem, Bozrah                  | 9/23   |
| East Twin Lake – TML                                       | Salisbury                      |  |
| Stratton Brook Park Pond – Trout Park                      | Simsbury                       | 10/2, 10/10, 10/17   |
| Scantic River (Upper)                                      | Somers, Enfield                | 10/18  |
| Willimantic River - TMA                                    | Tolland, Willington            | 9/27   |

| <b>Waterbody - Management type (Alphabetically)</b>  | <b>Town(s)</b>             | <b>Stocked</b>   |
|--|----------------------------|--|
| Stillwater Pond  | Torrington                 | 9/20   |
| Pequonnock River (Trumbull Basin) - TTA<br>Permit required for non-residents to park in Trumbull Town parks. Please call 203-452-5060 to make an appt with the P&R Dept. A valid Fishing License, Vehicle Registration, and ID are required. | Trumbull                   | 10/16  |
| Bigelow Pond   | Union                      | 9/27   |
| Mashapaug Lake   | Union                      | 9/27   |
| Valley Falls Park Pond – Trout Park  | Vernon                     | 9/24, 10/8, 10/24  |
| Beach Pond   | Voluntown                  | 9/20, 10/31 (Seefs)  |
| Wharton Brook Pond – Trout Park  | Wallingford                | 9/24, 10/4, 10/21  |
| Naugatuck River (Lower) – TTA  | Waterbury - Beacon Falls   | 10/11 (trout & A. Salmon), 10/21 (A. Salmon), 11/5 (A. Salmon) |
| Black Rock Pond – Trout Park   | Watertown                  | 9/28, 10/11, 10/17   |
| McGovern Pond – Trout Park   | West Hartford              | 10/2, 10/17, 10/25   |
| Saugatuck River (Fly)- TMA   | Westport                   | 10/3   |
| Highland Lake – TML  | Winchester                 |  |
| Shetucket River - TTA  | Windham, Scotland, Sprague | 9/24 (Trout), 10/4 (Atlantic Salmon), 10/25 (A. Salmon)        |
| Pomperaug River - TTA  | Woodbury, Southbury        | 9/26   |
| Black Pond – TML   | Woodstock                  | 11/1 (Brook Trout)   |