

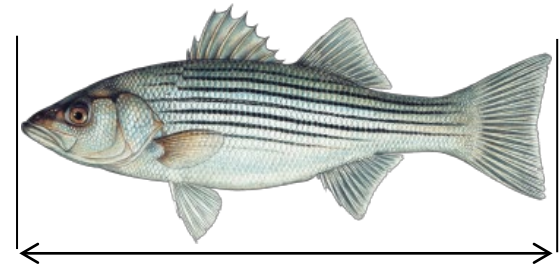
2024 MARINE RECREATIONAL FISHING REGULATIONS



Scan for more information about
Circle Hook Requirements

Minimum Length

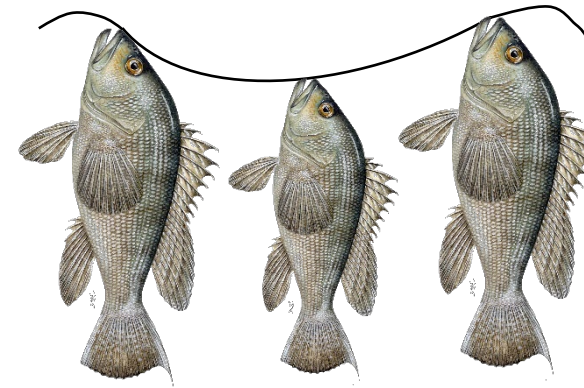
Longitud mínimo
最小長度



inches/pulgadas / 英寸

Daily Limit

Límite diario
每天魚簍限制



Open Season

Temporada abierto
開放季節

S	M	T	W	T	F	S

mm/dd-月/日



STRIPED BASS
(No Sparring)

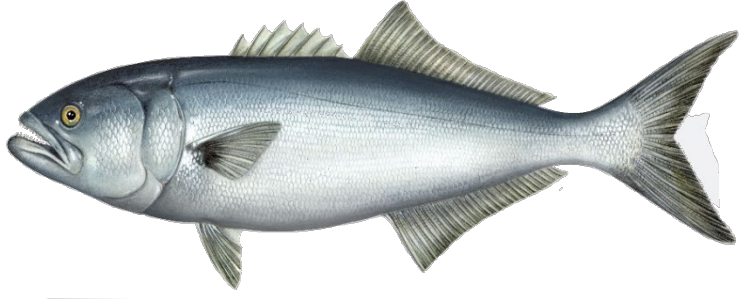
28-31

Lengths between which
fish may be kept

1

1/1 – 12/31

Must use Inline Circle Hooks
when fishing with bait



BLUEFISH

—

3
Including snapper
bluefish

1/1 – 12/31



TAUTOG (BLACKFISH) 16

2

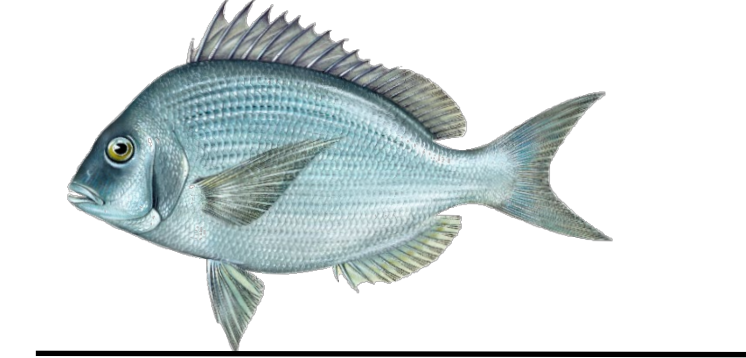
4/1 – 4/30

2

7/1 – 8/31

3

10/10 – 11/28

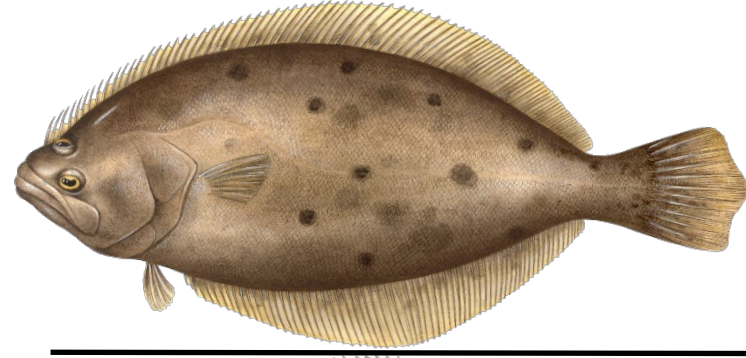


SCUP (PORGY)

Boat Anglers – 11
Shore Anglers – 9.5

30

5/1 – 12/31



SUMMER FLOUNDER
(FLUKE)*

19

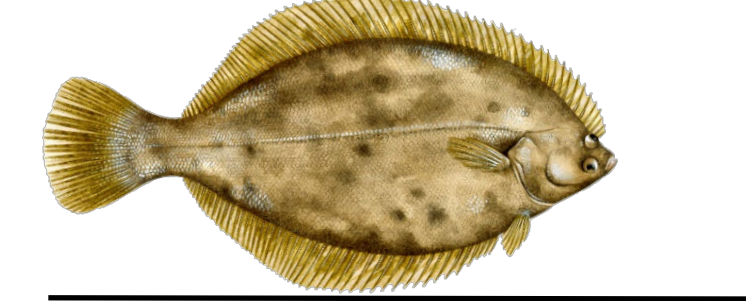
3

5/4 – 8/1

19.5

3

8/2 – 10/15



WINTER FLOUNDER

12

2

4/1 – 12/31



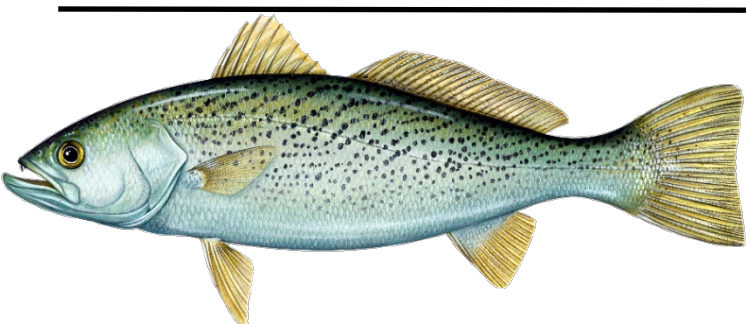
BLACK SEA BASS

16

5

5/18 – 6/23

7/8 – 11/28

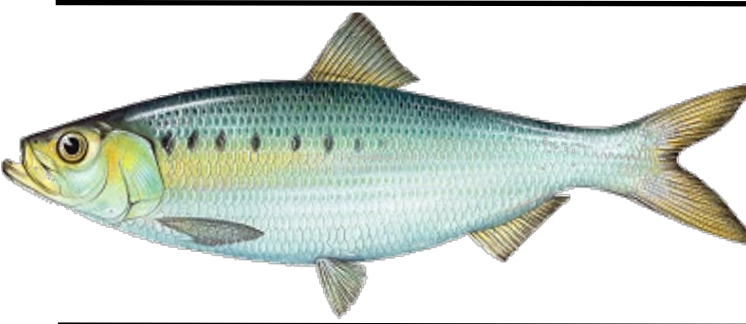


WEAKFISH

16

1

1/1 – 12/31

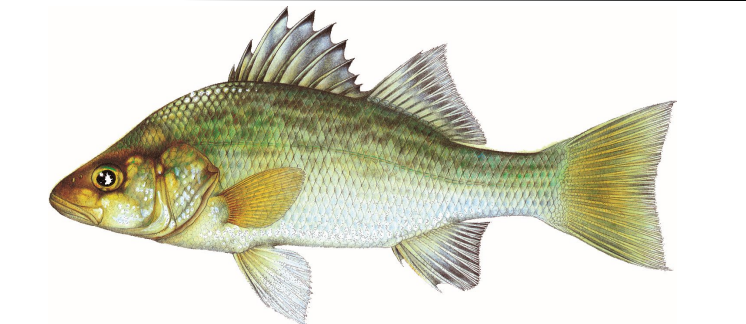


HICKORY SHAD

—

6

1/1 – 12/31

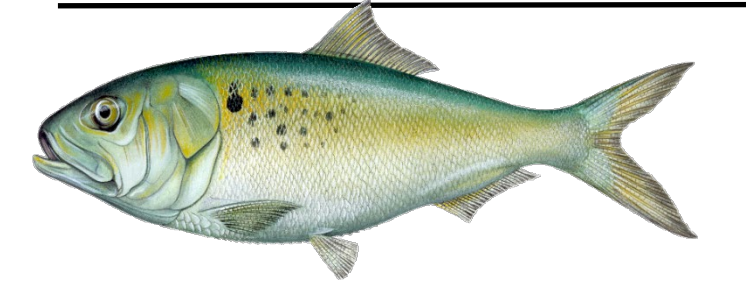


WHITE PERCH

7

30

1/1 – 12/31



MENHADEN (BUNKER) —

50 / 5 gal.

Whichever is the greater amount

1/1 – 12/31

*Except at [Enhanced Opportunity Shore Program](#) Designated Fishing Sites
Contact CTDEEP Marine Fisheries for more information

NOTE: SPEARFISHING IS SUBJECT TO ALL SPORT FISHING RESTRICTIONS.

ALL FISH ARE MEASURED FROM THE TIP OF THE SNOOT TO THE END OF THE TAIL (TOTAL LENGTH).



STATE OF CONNECTICUT
DEPARTMENT OF ENERGY AND
ENVIRONMENTAL PROTECTION
BUREAU OF NATURAL RESOURCES
MARINE FISHERIES PROGRAM
860-434-6043
deep.marine.fisheries@ct.gov



www.ct.gov/deep/saltwaterfishing



**To Report
Fishing Violations**
1-800-842-4357