

# 2026 MARINE RECREATIONAL FISHING REGULATIONS

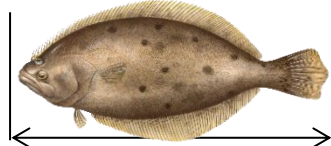
## At Enhanced Shore Fishing Sites\*



Scan for more information about  
Circle Hook Requirements

### Minimum Length

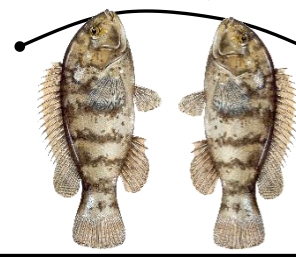
Longitud mínimo  
最小長度



inches/pulgadas / 英寸

### Daily Limit

Límite diario  
每天魚簍限制

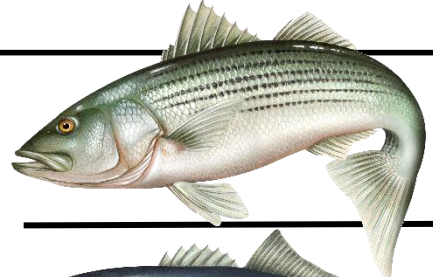


### Open Season

Temporada abierto  
開放季節

S	M	T	W	T	F	S

mm/dd - 月/日



**STRIPED BASS**  
(No spearing)

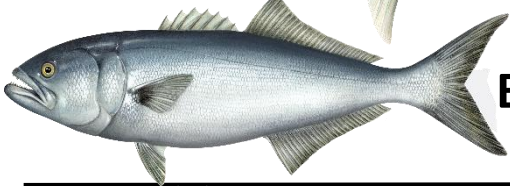
28-31

Lengths between which  
fish may be kept

1

1/1 – 12/31

Must use Inline Circle Hooks  
when fishing with bait



**BLUEFISH**

—

5

1/1 – 12/31

Including snapper bluefish



**TAUTOG (BLACKFISH)**

16

2

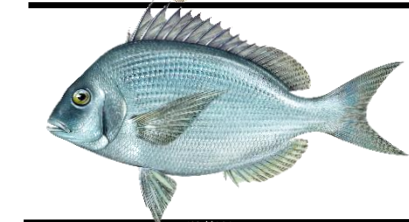
4/1 – 4/30

2

7/1 – 8/31

3

10/10 – 11/28

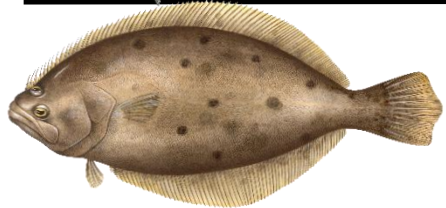


**SCUP (PORGY)**

Boat Anglers – 11  
Shore Anglers – 9.5

30

5/1 – 12/31



**SUMMER FLOUNDER  
(FLUKE)\***

17

3

5/4 – 10/15

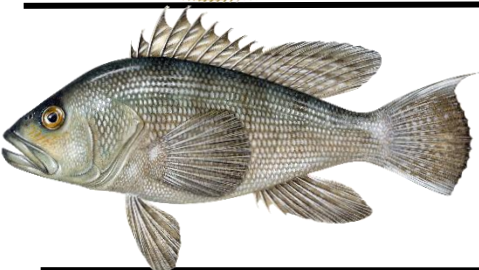


**WINTER FLOUNDER**

12

2

4/1 – 12/31

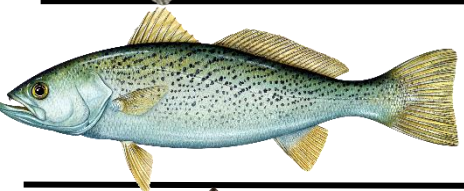


**BLACK SEA BASS**

15.5

4

5/16 – 11/25



**WEAKFISH**

16

1

1/1 – 12/31

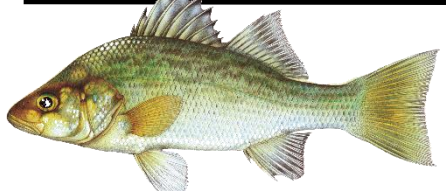


**HICKORY SHAD**

—

6

1/1 – 12/31

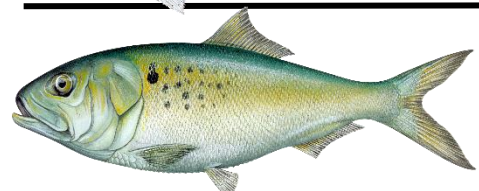


**WHITE PERCH**

7

30

1/1 – 12/31



**MENHADEN (BUNKER)**

—

50 / 5 gal.  
Whichever is the greater amount

1/1 – 12/31

\*Enhanced Opportunity Shore Fishing  
Site. Reduced minimum length for  
Summer Flounder

NOTE: SPEARFISHING IS SUBJECT TO ALL SPORT FISHING RESTRICTIONS.  
ALL FISH ARE MEASURED FROM THE TIP OF THE SNOUT TO THE END OF THE TAIL.



STATE OF CONNECTICUT  
DEPARTMENT OF ENERGY AND  
ENVIRONMENTAL PROTECTION  
BUREAU OF NATURAL RESOURCES  
MARINE FISHERIES PROGRAM  
860-434-6043  
[deep.marine.fisheries@ct.gov](mailto:deep.marine.fisheries@ct.gov)



[www.ct.gov/deep/saltwaterfishing](http://www.ct.gov/deep/saltwaterfishing)

To Report Fishing  
Violations  
1-800-842-4357