



Notice of Aquaculture Proposal within Long Island Sound Blue Plan Policy Area

DEEP Fisheries has been notified of a project proposed within the Long Island Sound Blue Plan policy area in the Madison Tuxis depuration area (see map below). The application is for the installation of twenty five 46" x 41" x 20" bottom cages spaced 10' apart in a 77.08'x 59.2' gear area within a 3-acre lease. Cages will be laid out in five 5-cage lines connected with a bottom longline and buoyed at each end. The cages will be used to depurate oysters and clams grown in the Hammock and Port Clinton lease areas. They will be inspected at least once a week for position and location on the lot to ensure they have not moved, and nothing is entangled in them. Weighted, sinking line will be used when attaching the anchors to each end to reduce the chances of entanglement by marine mammals. The bottom type at this site consists mainly of very soft sand and has a minimum water depth of 16' at MLLW and 20' at MHW. The entire boundary will be marked with safety aids to navigation (hazard buoys) at a distance of no more than 300 feet with the appropriate permit from CT DEEP Boating Safety Division.

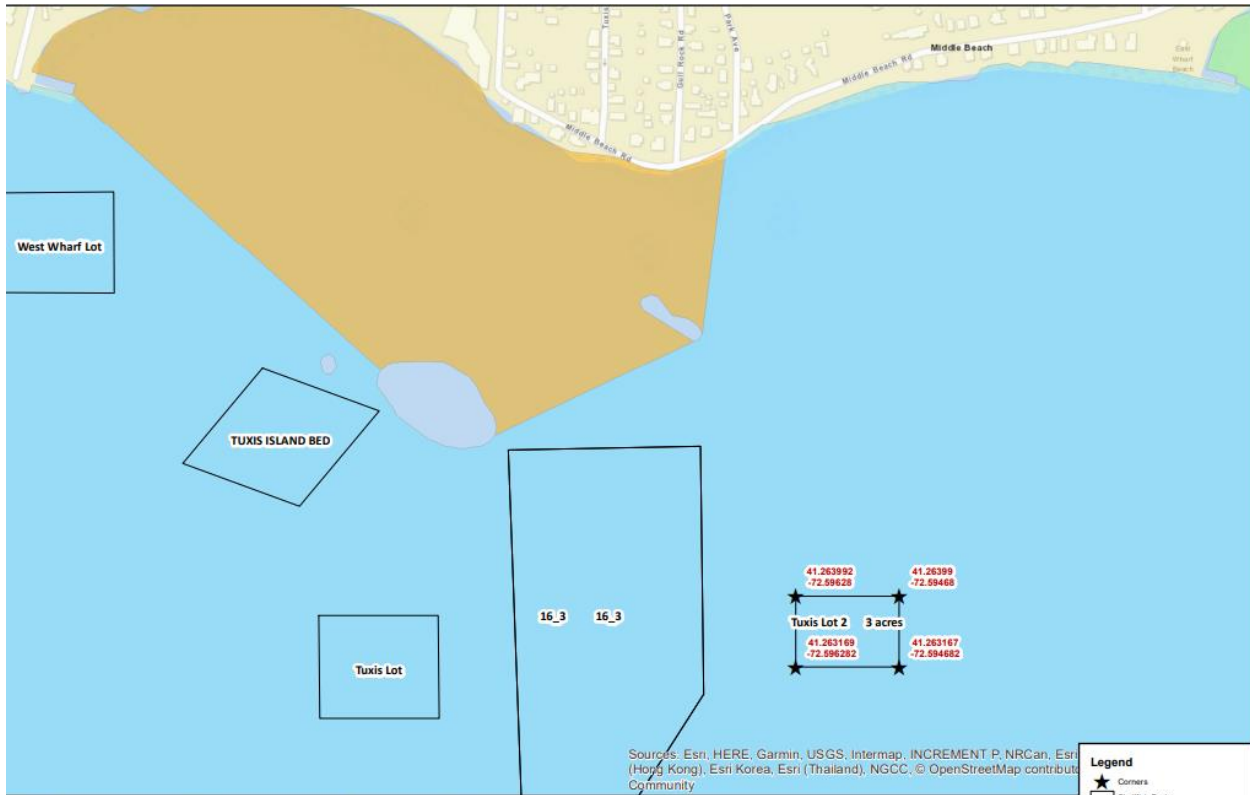
Depuration Area:

41.26399, -72.59631; 41.26399, -72.59468; 41.26317, -72.594712; 41.26319, -72.59627

For additional information please contact the applicant, Tucker Oyster Company at tuckerosterco@gmail.com.

All comments regarding this proposal may be submitted via electronic email to the Fisheries Division at deep.marine.fisheries@ct.gov no later than thirty (30) days from this notification, (deadline for comments = October 5, 2024).

The Connecticut Department of Energy and Environmental Protection is an Affirmative Action/Equal Opportunity Employer that is committed to complying with the requirements of the Americans with Disabilities Act. If you are seeking a communication aid or service, have limited proficiency in English, wish to file an ADA or Title VI discrimination complaint, or require some other accommodation, including equipment to facilitate virtual participation, please contact us at 860-418-5910 or by email at deep.accommodations@ct.gov. Any person needing an accommodation for hearing impairment may call the State of Connecticut relay number - 711. In order to facilitate efforts to provide an accommodation, please request all accommodations as soon as possible following notice of any agency hearing, meeting, program or event.



Sources: Esri, HERE, Garmin, USGS, Intermap, INCREMENT P, NRCan, Esri (Hong Kong), Esri Korea, Esri (Thailand), NGCC, © OpenStreetMap contributors, Community

CT Department of Agriculture Bureau of Aquaculture
 Madison, CT
 Tuxis Lot 2



Date: 8/7/2024



Legend

- ★ Corners
- Shellfish Beds
- ▨ Proposed grounds
- Town_Line

Class

- Approved
- Conditionally Approved
- Conditionally Approved Seasonal
- Conditionally Restricted-Relay
- Restricted-Relay
- Prohibited