



Notice of Aquaculture Proposal within Long Island Sound Blue Plan Policy Area

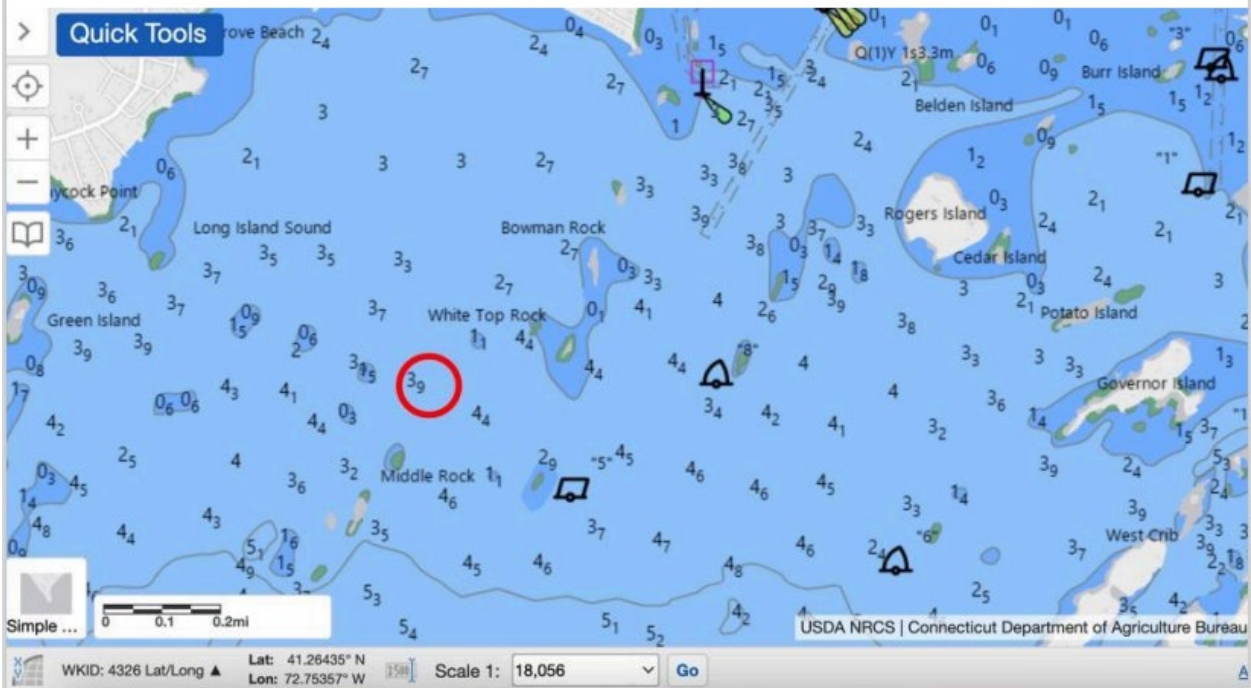
DEEP Fisheries has been notified of a project proposed within the Long Island Sound Blue Plan policy area (see maps below). This is a proposal to develop an oyster farm in the Branford Initiative Area state lot 127, west of the Thimble Islands. The water depth is approximately 15' at low tide and 20' at high tide. Oyster seed will be purchased from approved hatcheries in NY and MA and placed in bottom cages at a size of between 6-8mm. The farm will grow eastern oysters to 3" market size and sell to wholesalers, restaurants, and direct-to-consumer. The cages will be in the water year-round and deployed in 3 stages. The first stage will be up to 200 cages, second stage will be up to 400 cages, and the final full capacity stage will be up to 800 cages. The location is a ~5-acre lease within the 50-acre lot 127. At full scale, the farm will have twenty 400' mainlines each with forty wire mesh cages, for a total of 800 cages. The mainlines will be anchored by four helical screw anchors every 100' and surface buoys will be attached to each end of the lines numbered 1 - 20. Each line will be spaced 25' apart and there will be a 25' buffer from the edge of the permitted area. All requirements for regulatory markers will be determined by the DEEP Boating Division.

For additional information please contact the applicant, Sound Waters Aquaculture LLC at zgordon93@gmail.com.

All comments regarding this proposal may be submitted via electronic email to the Fisheries Division at deep.marine.fisheries@ct.gov no later than thirty (30) days from the date of this notice (deadline for comments = July 6, 2024).

The Connecticut Department of Energy and Environmental Protection is an Affirmative Action/Equal Opportunity Employer that is committed to complying with the requirements of the Americans with Disabilities Act. If you are seeking a communication aid or service, have limited proficiency in English, wish to file an ADA or Title VI discrimination complaint, or require some other accommodation, including equipment to facilitate virtual participation, please contact us at 860-418-5910 or by email at deep.accommodations@ct.gov. Any person needing an accommodation for hearing impairment may call the State of Connecticut relay number - 711. In order to facilitate efforts to provide an accommodation, please request all accommodations as soon as possible following notice of any agency hearing, meeting, program or event.

General Area Map
Sound Waters Aquaculture Oyster Farm
Long Island Sound - Branford, CT






Red Circle is general farm area

**Figure 1. General Location Map - Sound Waters Aquaculture LLC
Branford, CT - Long Island Sound, State lot 127**



Legend:

-  - Green Can Navigation buoy #5
-  - Proposed farm border and distance line to nearest navigation buoy
-  - State lot 127 border