



November 8, 2024

Connecticut Department of Energy and Environmental Protection  
Material Management Infrastructure Grant Program  
Via email: [DEEP.MMCAPlanning@ct.gov](mailto:DEEP.MMCAPlanning@ct.gov)

Dear MMI Evaluation Committee,

I am writing to express SCRRRA's interest in the Materials Management Infrastructure (MMI) Grant Program offered by DEEP. As Executive Director at SCRRRA, I am excited about the opportunity to apply for this grant to support Building a Regional Composting Facility for Southeastern Connecticut.

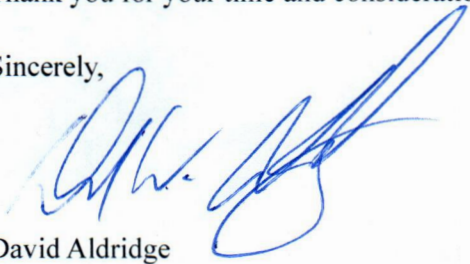
Our project aims to provide currently unavailable and greatly needed infrastructure for the diversion of organics from disposal at a waste-to-energy facility and recycle the material into a beneficial and environmentally friendly soil amendment. This initiative is particularly important because of the need to ease the State's waste disposal capacity deficit and the spiraling increase in disposal cost, both financially and environmentally. With the support of the MMI Grant, we will be able to construct a composting facility which will serve the region's recycling needs for decades to come.

Our team has a proven track record of success managing the waste disposal and recycling needs of Southeastern CT for over 30 years. We are committed to continuing our services for many years to come and driving our communities to a more sustainable future. Enclosed, please find our detailed grant proposal, which includes a comprehensive plan and budget for the project.

We are confident that the MMI Grant will significantly contribute to the success of the regional compost facility and help us make a meaningful impact in Southeastern CT. We appreciate your consideration of our application and look forward to the possibility of collaborating with DEEP to achieve our shared goals.

Thank you for your time and consideration.

Sincerely,

  
David Aldridge  
Executive Director  
Southeastern CT Regional Resources Recovery Authority



# Materials Management Infrastructure (MMI) Grant Program

---

*Connecticut Department of Energy and Environmental Protection*

**Project Title:** Building a Regional Composting Facility for Southeastern Connecticut

**Applicant Name:** Southeastern Connecticut Regional Resources Recovery Authority (SCRRRA)

**Eligible Entity Type:** Regional Resource Recovery Authority

**Project Summary:** SCRRRA proposes to construct and operate the first large-scale aerobic food waste composting facility in southeastern Connecticut, fulfilling an infrastructure need in a historically underserved region. With this facility, SCRRRA will provide the infrastructure to create a sustainable, scalable system for diverting Source Separated Organics (SSO) from the Municipal Solid Waste (MSW) stream, to be turned into a high-quality soil amendment – compost – for farmers and gardeners. Creation of this facility will save towns money in the face of rising waste management costs, reduce greenhouse gas emissions produced by trucks and landfilling, sequester carbon in the natural process of composting, help alleviate the state's waste disposal crisis by reducing MSW tonnages, and help advance progress towards the statewide 60% diversion rate set forth in Connecticut's Comprehensive Materials Management Strategy (CMMS).

**Project Location:** 132 Military Highway (Route 12), Preston, CT 06365

**Anticipated Volume of SSO Diverted:** 5,500 tons per year

**Anticipated Volume of Wood Waste Diverted:** 8,500 tons per year

**Local Permitting:** Complete

**State Permitting:** In Process

**Total Funding Requested:** \$4,500,000

**Contact Information:**

David Aldridge, Executive Director

7 Hurlbutt Rd. Ste. O

Gales Ferry, CT 06335

(860) 381-5558 ext. 201

[daldridge@scrrra.org](mailto:daldridge@scrrra.org)

## Table of Contents

|   |    |
|---|----|
| Key Acronyms .....  | 3  |
| Project Narrative .....   | 4  |
| The Need.....   | 4  |
| The Proposal .....  | 5  |
| Alignment with CCSMM .....  | 6  |
| Measuring Results .....   | 7  |
| Environmental Justice .....   | 7  |
| Organizational Experience .....   | 8  |
| Project Sustainability, Scalability and Replicability .....                         | 8  |
| Project Timeline .....  | 9  |
| Requested Funding .....   | 9  |
| References .....  | 10 |
| Supporting Documents .....  | 11 |
| Attachment 1: Site Plan .....   | 12 |
| Attachment 2: Budget Table .....  | 13 |
| Attachment 3: Environmental Justice Public Participation Plan Approval Letter ..... | 14 |
| Attachment 4: Letters of Support .....  | 15 |

## Key Acronyms

- ASP: Aerated Static Pile
- CCSMM: Connecticut Coalition for Sustainable Materials Management
- CMMS: Connecticut's Comprehensive Materials Management Strategy
- DEEP: Department of Energy and Environmental Protection
- EPR: Extended Producer Responsibility
- MMI: Materials Management Infrastructure
- MSW: Municipal Solid Waste
- RFA: Request for Applications
- SCRRA: Southeastern Connecticut Regional Resources Recovery Authority
- SMM: Sustainable Materials Management Grant Program
- SSO: Source Separated Organics
- WTE: Waste-to-Energy

## Project Narrative

### The Need

The state of Connecticut is facing a waste crisis. We produce more waste than our existing infrastructure can handle. According to the Comprehensive Materials Management Strategy (CMMS) put forth by the Connecticut Department of Energy and Environmental Protection (DEEP), Connecticut residents dispose of approximately 2.4 million tons of municipal solid waste (MSW) each year. Although about 35% of this is recycled, the remainder must be processed, and options are limited. Connecticut hosts four (4) Waste-to-Energy (WTE) facilities that currently process about 60% of the state's MSW, leaving an estimated 40% for an alternative disposal option. Currently this option is largely long-distance transport to out-of-state landfills, a practice that is expensive, unsustainable, and environmentally undesirable. As the Naugatuck Valley Council of Governments (NVCOG) highlights in their story map "We Are In A Waste Crisis", "environmental justice problems arise when we pay to send our trash to someone else's backyard" (NVCOG, 2023). Connecticut requires additional waste management infrastructure to divert more recyclable materials from the MSW stream; specifically, organic, compostable materials.

DEEP's creation of the Sustainable Materials Management (SMM) Grant Program, with a focus on diverting food scraps from the MSW stream, is a step in the right direction. Food scraps alone make up about 25% of the waste produced in Connecticut. When other organics like grass clippings, leaves, and compostable paper are considered, the percentage of a typical household's waste stream that could be diverted through an organics program approaches approximately 40% (NVGOC, 2023). The CMMS Amendment released in January 2023 recommends specifically two main strategies for "accelerating and maximizing diversion solutions": Extended Producer Responsibility (EPR) programs and "organics reuse and diversion strategies" (DEEP, 2023). Notably, composting is the second preferred tier of waste management on Connecticut's waste management hierarchy:



Figure 1. Connecticut's Waste Management Hierarchy (DEEP, 2023)

Although SCRRRA has actively promoted backyard composting for decades (the Authority provides home composting equipment and resources to residents, at cost), this composting venue largely services single family homes. Missed through this regional program are small and large commercial, institutional, and multifamily entities with volumes of organics requiring a professional commercial composting facility.

SCRRRA manages MSW and recycling for twelve municipalities in southeastern Connecticut: East Lyme, Griswold, Groton, Ledyard, Montville, New London, North Stonington, Norwich, Preston, Sprague, Stonington, and Waterford. This equates to a population of over 220,400, or 91,000 households (AdvanceCT, 2024). The SCRRRA region generates approximately 130,000 tons of MSW per year, which is processed at the WTE plant in Lisbon, CT. The proposed facility will be open to all of New London County, a population of 269,000 (United States Census Bureau, 2021). Although some larger supermarket chains transport their food waste for composting out of state, most food waste is entrained within the region's MSW and sent to the Lisbon WTE facility. Minimal energy is produced in the combustion of that waste, and it produces unwanted nitrogen emissions. The food waste is incinerated and the resulting ash is buried in a landfill in Putnam, CT. The Authority's proposal offers an alternative that will provide the infrastructure needed in our region to divert organics from the waste stream, reduce MSW tonnage, lower disposal costs, and advance the state's waste self-sufficiency goals. The compost produced will provide a local source of nutrient-rich soil amendment, a healthy alternative to man-made fertilizers that sequesters carbon in the natural process of composting.

## **The Proposal**

SCRRRA proposes to construct and operate southeastern Connecticut's first commercial-scale food waste composting facility. The facility will utilize an innovative hybrid compost system, combining aerated static pile (ASP) processing with open windrows for curing, resulting in quicker composting times and reduced operational costs. The facility will be situated on approximately six acres of land owned by the Authority at 132 Military Highway (Route 12) in the town of Preston. Local zoning approval for the facility has been acquired and the required state-level solid waste permit application is currently under review by DEEP. A robust environmental justice public participation plan has also been developed and approved by DEEP, in consideration of Preston's status as a distressed municipality, and all twelve of our member municipalities are in full support of the project, as evidenced by their letters of support (attached).

Similar to Black Earth Compost in Gloucester, MA, our facility will involve a receiving area, a processing area, and a storage/sales area. The receiving area will be located on the west side of the property and will consist of a covered building on a concrete slab with a roll-up door. Upon receipt, the food scraps will be blended with a carbon source (mulch, leaf waste) and water as necessary. This immediate, daily step of processing incoming feedstock, undertaken inside a closed receiving building, will minimize odors.

The blended mixture will then be placed in a concrete ASP bay, complete with forced aeration, temperature monitoring, and the provision of moisture as determined via continuous data inputs.



Each bay will be operated at sufficient temperatures to sterilize the compost, rendering any pathogens inert and killing any unwanted seeds. After two to three weeks in the ASP bay, the mixture will be moved to open windrows to further cure. By this stage, the compost will look and feel like rich, black soil. After about two months of curing, the finished compost product will be moved to the designated area for screening, storage, and sale to the public. The finished compost will be sold at market prices and will greatly benefit our local farmers and gardeners, who currently source their fertilizers and compost from out of region and/or out of state. A portion will be designated for disadvantaged communities at a reduced price, including free compost for a limited quantity, to be used for community gardens and beautification projects.

Based on state and local generated data, we anticipate most of the facility's feedstocks will be sourced within the region or New London County. SCRRA's twelve municipal transfer stations have an abundance of yard and wood waste which SCRRA will grind for use in the facility. SCRRA will collaborate with experienced organics haulers like Black Earth Compost and Blue Earth Compost (Hartford, CT) to collect SSO, targeting larger institutional, commercial, and residential SSO generators, as well as smaller generators, such as municipal transfer stations and curbside pickup.

The proposed project will:

- establish compost infrastructure that will facilitate diversion of food waste from the MSW stream for 25+ years,
- save towns money by lowering waste disposal costs, forecasted to reach an estimated annual savings of \$850,000 annually,
- establish large-scale capacity for organics recycling,
- reduce greenhouse gas emissions created by incineration, trucking of ash out of the region, and trucking of purchased soil amendments into the region,
- sequester carbon in the natural process of composting,
- provide a local source of soil amendment/fertilizer alternative, some of which will be provided free to disadvantaged communities for their community gardens,
- reduce the amount of waste being sent to incinerators and landfills, and
- educate our communities about organics recycling and compost.

### **Alignment with CCSMM**

This project aligns well with the State of Connecticut's Comprehensive Materials Management Strategy (CMMS), the goals of the Sustainable Materials Management (SMM) program, and the State's integrated hierarchy of waste management methodologies. The project supports the vision of the Connecticut Coalition for Sustainable Materials Management (CCSMM), of which SCRRA is a member, and SustainableCT, of which several of our towns are members.

The project also aligns with the statute for large scale food waste generators, CGS Section 22a-226e "Recycling of Source Separated Materials". The law, applicable to SSO generators of 26 tons or more, requires that food scraps generated be separated and brought to a permitted organics

recycling facility within 20 miles. As of January 1, 2025, the 20-mile stipulation will be dropped. The SCRRRA compost facility is key to facilitating the capture of organics under this statute.

## **Measuring Results**

SCRRRA will measure, record and report on a variety of metrics to quantify the compost facility's success. All incoming feedstocks (food scraps, carbon sources) and outgoing materials (finished compost) will be weighed, providing metrics on the facility's operations and enabling estimates of GHG reductions. Recipients of finished compost will be recorded by profile and quantity received.

SCRRRA will conduct periodic lab analysis of the finished compost in accordance with the USCC Seal of Testing Assurance (STA) Program. This program meets the consensus of research scientists nationally, as it provides consistent standards and product characteristics, increasing confidence in the compost's quality.

## **Environmental Justice**

The proposed project will uphold and promote environmental justice within the SCRRRA region. The twelve SCRRRA member municipalities are demographically, linguistically, and socioeconomically unique and diverse; Norwich, New London, and Groton, for example, have significant minority and immigrant populations. Several areas have been identified as "disadvantaged" by the United States' Climate and Economic Justice Screening Tool (CEJST). The SCRRRA region also encompasses two tribal nations, both identified as disadvantaged: the Mohegan of Connecticut and the Mashantucket Pequot.

Preston, host town for the facility, was formerly categorized by the State of Connecticut as an Environmental Justice Community and is currently considered a "distressed municipality." The Authority is sensitive to this in all aspects of our project and approach. A robust public participation plan was developed and approved by DEEP, including a public informational session to be held on November 25, 2024, a letter to all residents within a half-mile radius of the property, easy public access to all relevant project documents, and means to submit comments and questions.

SCRRRA's project will promote environmental justice and benefit the region's historically disadvantaged communities because it will:

- provide a Payment in Lieu of Taxes (PILOT) to the municipality. Currently, the property is not taxed; included in the facility's business plan is a PILOT, which effectively returns the property to the tax rolls.
- provide finished compost to these communities, as requested and at a reduced price, including free compost, which can be used for community gardens and beautification projects. For example, as part of SCRRRA's 2021 pilot project, SCRRRA provided finished compost to several community gardens in New London that promote food justice and youth empowerment, as well as to the Ledyard Garden Club, which donates all produce grown to local food banks.



- provide the infrastructure needed for citizens to divert food scraps from their household trash, reducing the amount of overall MSW produced and the cost of disposal.
- provide an affordable, locally sourced high-quality soil amendment in support of organic farming and gardening, making for healthier, more sustainable communities.
- increase awareness and understanding of environmental issues and recycling options.
- help shift mindsets to be more aware of what we use and what we waste, creating more sustainability and environmentally minded communities.

The Authority will strive to continually engage with residents to ensure their meaningful participation by:

- providing project information and updates online, on our website and social media platforms, with pathways for residents to ask questions and get answers,
- providing information and resources in several languages, and
- holding public forums as required.

### **Organizational Experience**

SCRRRA has served the southeastern Connecticut region for over 30 years, providing long-term solutions for MSW management and recycling in our twelve member municipalities. The Authority provides a variety of other services to its member communities, such as household hazardous waste collection events, coordination of systems for state-mandated recyclables at municipal transfer stations, wood and brush grinding, and educational outreach programs for local schools and organizations. The proposed SCRRRA compost facility will be a natural addition to the array of services the Authority already manages for the region.

In 2021, in conjunction with SCS Engineers, SCRRRA conducted a successful compost pilot test at the Town of Stonington's transfer station, to evaluate receipt and composting of food scraps using ASP technology. SCS Engineers and SCRRRA prepared and submitted a Compost Pilot Test Operation and Management Plan to DEEP, which was approved. The pilot test system was sized to mimic realistic operating conditions to provide proof of concept. The pilot test included two batches of food scraps and ground yard waste, differing in ratios of food to yard waste. The pilot test system included continuous monitoring of temperature, recorded to document pathogen reduction via maintenance of sufficiently high temperatures over a three-day period. During the test, five samples were collected from each batch, at differing times during the process. The samples were sent to a lab for analysis of compost parameters, including degree of completion (e.g., stability, maturity; see attachment). The test results demonstrated the feasibility of the project, proving that SCRRRA can successfully implement a permanent composting operation and providing valuable information for proper design of the proposed full-scale facility.

### **Project Sustainability, Scalability and Replicability**

The SCRRRA compost facility is designed to be scalable so that it may expand as usage and needs increase. SCRRRA plans to utilize funds from tipping fees, compost sales, funds from our own

financial reserves, and future grant opportunities to support the facility after current funding has ended.

The design of the proposed project can easily be replicated in other communities. SCRRRA plans to share and report the project results at compost industry forums, including state, regional, and national conferences, and by publishing articles in trade magazines.

### **Project Timeline**

The timeline for this project is dependent on successful completion of SCRRRA's Environmental Justice Public Participation Plan and subsequent solid waste permit application review by DEEP, as outlined below:

|   |   |
|---|---|
| Environmental Justice Public Participation Plan – Informal Public Informational Meeting | November 25, 2024   |
| Environmental Justice Public Participation Plan – Final Report Due                      | December 25, 2024   |
| Solid Waste Permit Application Review Process Resumes                                   | January 25, 2025 (60 days after public informational meeting) |
| Solid Waste Permit Application Approval   | Unknown   |

Upon approval of the solid waste permit application, the timeline is estimated as follows:

|                              |          |
|------------------------------|----------|
| RFP process for construction | 90 days  |
| Site preparation             | 109 days |
| Compost system install       | 22 days  |
| First batch process complete | 89 days  |
| Total:                       | 310 days |

If the solid waste permit were to be awarded February 2025, therefore, we estimate the first batch process would be complete December 2025.

### **Requested Funding**

SCRRRA requests a total of \$4,500,000 to cover the costs of construction of the facility. A detailed budget table is included in the supporting documents, attached. The Authority has secured alternative funding for ancillary equipment (e.g. trommel screener, loader, temperature monitoring system) through the Composting and Food Waste Reduction USDA grant.

## References

AdvanceCT, 2024. *Connecticut Town Profiles*. <https://profiles.ctdata.org/>

Connecticut Department of Energy and Environmental Protection (DEEP), 2023. *CMMS (Comprehensive Materials Management Strategy) Amendment*. [https://portal.ct.gov/-/media/DEEP/waste\\_management\\_and\\_disposal/Solid\\_Waste\\_Management\\_Plan/January2023/CMMS-Amendment-2023-DRAFT.pdf](https://portal.ct.gov/-/media/DEEP/waste_management_and_disposal/Solid_Waste_Management_Plan/January2023/CMMS-Amendment-2023-DRAFT.pdf)

Connecticut Department of Energy and Environmental Protection (DEEP), 2024. *Request For Applications (RFA) – Materials Management Infrastructure Grant Program*. <https://portal.ct.gov/deep/reduce-reuse-recycle/municipal-recycling-resource-center/municipal-and-regional-grants-and-technical-assistance>

Naugatuck Valley Council of Governments (NVCOG), 2023. *We are in a Waste Crisis*. <https://storymaps.arcgis.com/stories/be24e917780f42909ddb3248384a2b90>

United States Census Bureau, 2020. *New London County, Connecticut*. [https://data.census.gov/profile/New\\_London\\_County,\\_Connecticut?g=050XX00US09011](https://data.census.gov/profile/New_London_County,_Connecticut?g=050XX00US09011)

## **Supporting Documents**

Attachment 1: Site Plan

Attachment 2: Budget Table

Attachment 3: Environmental Justice Public Participation Plan Approval Letter & Final Report  
Approval Letter

Attachment 4: Letters of Support

## **Attachment 1: Site Plan**

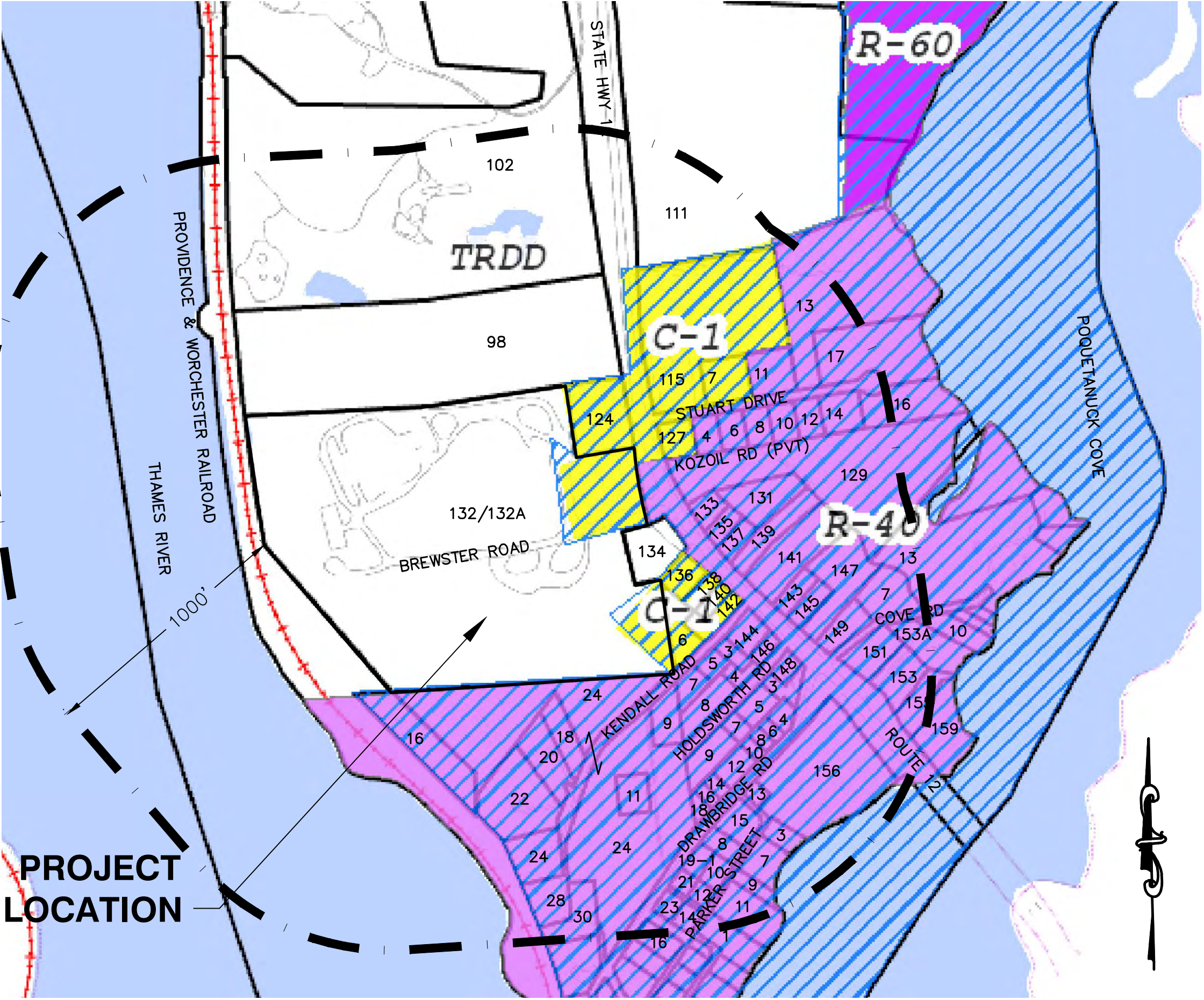


SITE PLAN  
LOT 132 BLOCK 12  
TOWN OF PRESTON, NEW LONDON COUNTY, CONNECTICUT  
ASP COMPOST FACILITY  
OCTOBER 2023

PREPARED BY:  
SCS ENGINEERS  
4 EXECUTIVE BLVD, SUITE 303  
SUFFERN, NY  
(845) 357-1510

PREPARED FOR (OWNER):  
SOUTHEAST CONNECTICUT REGIONAL  
RESOURCES RECOVERY AUTHORITY  
7 HURLBUTT ROAD  
GALES FERRY, CT 06335

PROJECT ADDRESS:  
132 ROUTE 12  
PRESTON, CONNECTICUT 06365



KEY/ZONING MAP  
SOURCE: TOWN OF PRESTON  
GEOGRAPHIC INFORMATION SYSTEM  
(GIS) 8/18/23  
500 250 0 500 1000  
SCALE: 1"=500'

ZONING LEGEND  
Commercial District  
Residential-40  
Residential-60  
Thames River Design District  
Special Resource Protection Overlay

ABUTTERS LIST  
WITHIN 100 FEET OF SUBJECT LOT

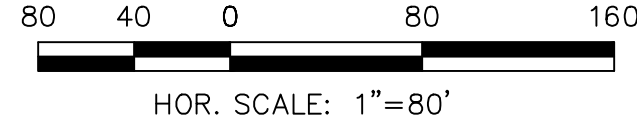
|  |  |  |
|--|--|--|
| 21-1-12-124<br>SAVIN PRESTON LLC<br>77 STERLING ROAD<br>EAST HARTFORD CT 06108   | 26-1-12-98<br>CASTLE REALTY LLC<br>P O BOX 266<br>STONINGTON CT 06376                | 26-1-12-132<br>COVANTA SE CONNECTICUT CO<br>3520 PIEDMONT RD NE - STE 410<br>ATLANTA GA 30305  |
| 26-1-12-136<br>RABOVSKY THOMAS P JR<br>136 ROUTE 12<br>PRESTON CT 06365          | 26-1-12-138<br>VOCATURA PROPERTIES LLC<br>55 BROWN SCHOOL RD<br>PRESTON CT 06365     | 26-1-12-134<br>VOC'S REALTY LLC<br>55 BROWN SCHOOL RD<br>PRESTON CT 06365                      |
| 26-1-12-142<br>VOCATURA PROPERTIES LLC<br>55 BROWN SCHOOL RD<br>PRESTON CT 06365 | 26-1-DRA1-24<br>HAPPYLAND PROPERTIES LLC<br>24 ROOSEVELT AVE EXT<br>PRESTON CT 06365 | 26-1-KEN1-5<br>POLLARD JOYCE<br>5 KENDALL RD<br>PRESTON CT 06365                               |
| 26-1-KEN1-6<br>COURBIN JOHN + SANDRA L<br>6 KENDALL ROAD<br>PRESTON CT 06365     | 26-1-KEN1-7<br>DELACRUZ MENDEZ JORGE LUIS<br>7 KENDALL RD<br>PRESTON CT 06365        | 26-1-KEN1-9<br>BIRKBECK ANDY & CAROLYN R<br>9 KENDALL RD<br>PRESTON CT 06365                   |
| 26-1-KEN1-16<br>SE CT REGIONAL RESOURCES REC<br>PO BOX 787<br>NORWICH CT 06360   | 26-1-KEN1-18<br>BIRKODD LLC<br>18 KENDALL RD<br>PRESTON CT 06365                     | 26-12-132<br>SE CT REGIONAL RESOURCES REC<br>3520 PIEDMONT RD NE - STE 410<br>ATLANTA GA 30305 |

INDEX OF SHEETS

| SHEET NO. | DRAWING TITLE                          | REVISION |
|-----------|--|----------|
| 1         | COVER SHEET                            | 0        |
| 2         | IMPROVEMENT LOCATION SURVEY            | 0        |
| 3         | ASP COMPOST FACILITY SITE PLAN (FINAL) | 0        |
| 4         | GRADING & DRAINAGE PLAN                | 0        |
| 5         | EROSION & SEDIMENT CONTROL PLAN        | 0        |
| 6         | DETAILS 1                              | 0        |
| 7         | DETAILS 2                              | 0        |

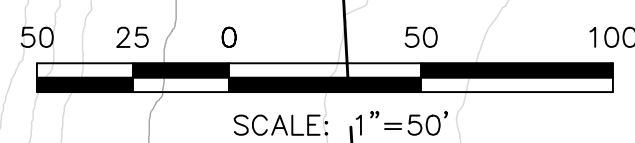
PERMIT SET 10/27/23  
NOT FOR CONSTRUCTION





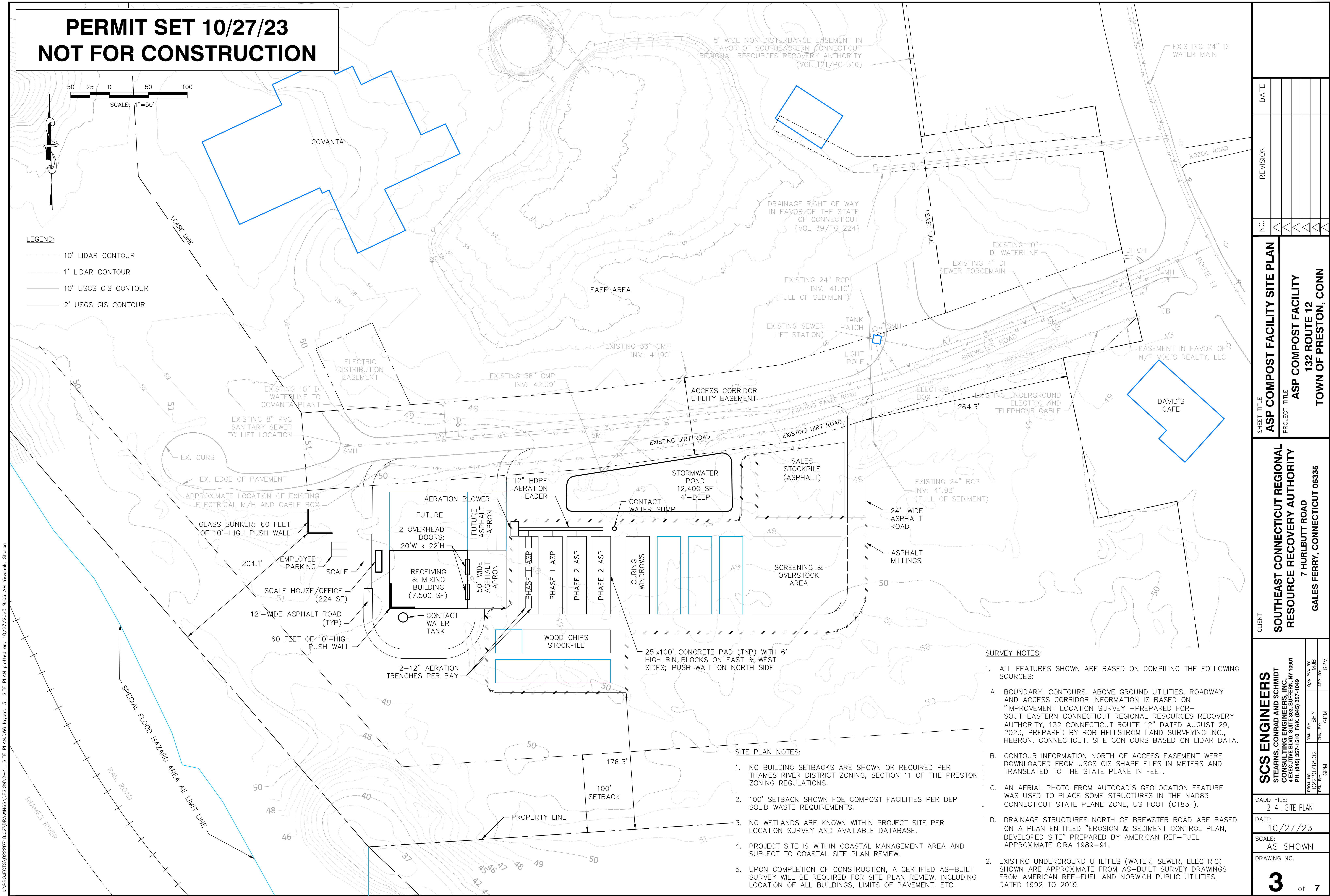


PERMIT SET 10/27/23  
NOT FOR CONSTRUCTION



LEGEND:

- 10' LIDAR CONTOUR
- 1' LIDAR CONTOUR
- 10' USGS GIS CONTOUR
- 2' USGS GIS CONTOUR



SURVEY NOTES:

- ALL FEATURES SHOWN ARE BASED ON COMPILING THE FOLLOWING SOURCES:
  - BOUNDARY, CONTOURS, ABOVE GROUND UTILITIES, ROADWAY AND ACCESS CORRIDOR INFORMATION IS BASED ON "IMPROVEMENT LOCATION SURVEY -PREPARED FOR- SOUTHEASTERN CONNECTICUT REGIONAL RESOURCES RECOVERY AUTHORITY, 132 CONNECTICUT ROUTE 12" DATED AUGUST 29, 2023, PREPARED BY ROB HELLSTROM LAND SURVEYING INC., HEBRON, CONNECTICUT. SITE CONTOURS BASED ON LIDAR DATA.
  - CONTOUR INFORMATION NORTH OF ACCESS EASEMENT WERE DOWNLOADED FROM USGS GIS SHAPE FILES IN METERS AND TRANSLATED TO THE STATE PLANE IN FEET.
  - AN AERIAL PHOTO FROM AUTOCAD'S GEOLOCATION FEATURE WAS USED TO PLACE SOME STRUCTURES IN THE NAD83 CONNECTICUT STATE PLANE ZONE, US FOOT (CTB3F).
  - DRAINAGE STRUCTURES NORTH OF BREWSTER ROAD ARE BASED ON A PLAN ENTITLED "EROSION & SEDIMENT CONTROL PLAN, DEVELOPED SITE" PREPARED BY AMERICAN REF-FUEL APPROXIMATE CIRA 1989-91.
- EXISTING UNDERGROUND UTILITIES (WATER, SEWER, ELECTRIC) SHOWN ARE APPROXIMATE FROM AS-BUILT SURVEY DRAWINGS FROM AMERICAN REF-FUEL AND NORWICH PUBLIC UTILITIES, DATED 1992 TO 2019.

SITE PLAN NOTES:

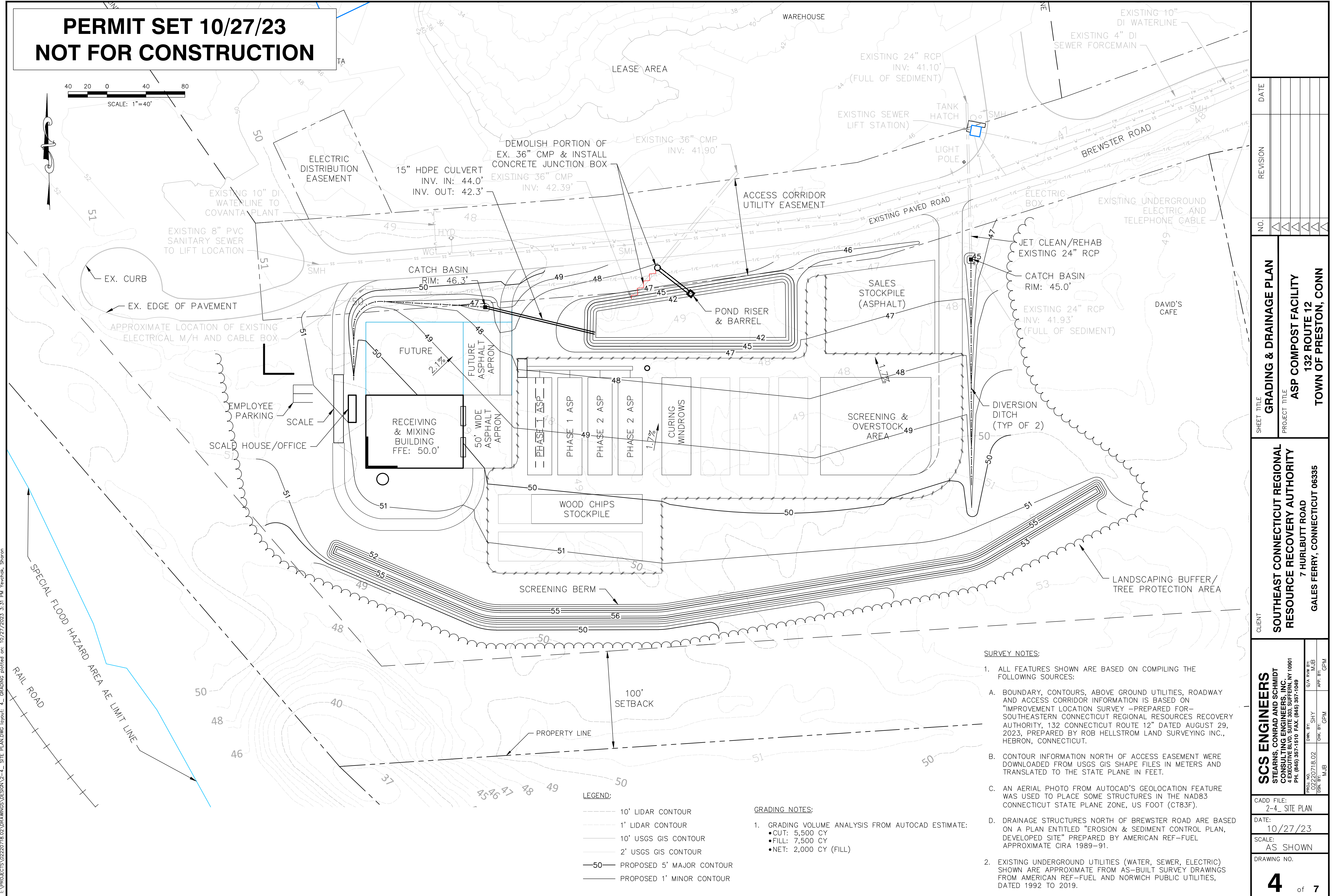
- NO BUILDING SETBACKS ARE SHOWN OR REQUIRED PER THAMES RIVER DISTRICT ZONING, SECTION 11 OF THE PRESTON ZONING REGULATIONS.
- 100' SETBACK SHOWN FOE COMPOST FACILITIES PER DEP SOLID WASTE REQUIREMENTS.
- NO WETLANDS ARE KNOWN WITHIN PROJECT SITE PER LOCATION SURVEY AND AVAILABLE DATABASE.
- PROJECT SITE IS WITHIN COASTAL MANAGEMENT AREA AND SUBJECT TO COASTAL SITE PLAN REVIEW.
- UPON COMPLETION OF CONSTRUCTION, A CERTIFIED AS-BUILT SURVEY WILL BE REQUIRED FOR SITE PLAN REVIEW, INCLUDING LOCATION OF ALL BUILDINGS, LIMITS OF PAVEMENT, ETC.

| SHEET TITLE                    |             | NO.   |     | REVISION                                       |    | DATE                                   |    |
|--------------------------------|-------------|---|-----|--|----|--|----|
| ASP COMPOST FACILITY SITE PLAN |             |   |     |  |    |  |    |
| PROJECT TITLE                  |             |   |     |  |    |  |    |
| ASP COMPOST FACILITY           |             |   |     |  |    |  |    |
| 132 ROUTE 12                   |             |   |     |  |    |  |    |
| TOWN OF PRESTON, CONN          |             |   |     |  |    |  |    |
| CLIENT                         |             | SOUTHEAST CONNECTICUT REGIONAL<br>RESOURCE RECOVERY AUTHORITY |     | 7 HURLBUTT ROAD                                |    | GALES FERRY, CONNECTICUT 06335         |    |
| SCS ENGINEERS                  |             | STEARNS, CONRAD AND SCHMIDT<br>CONSULTING ENGINEERS, INC.     |     | 4 EXECUTIVE BLVD. SUITE 305, SUFFERN, NY 10901 |    | PH. (845) 357-1510 FAX. (845) 357-1049 |    |
| PROJ. NO.                      | 20230718.02 | DWG. BY   | SHY | CHECK BY                                       | GP | APP. BY                                | GP |
| DATE                           | 10/27/23    | CADD FILE:  |     |  |    |  |    |
| SCALE:                         | AS SHOWN    | 2-4_ SITE PLAN  |     |  |    |  |    |
| DRAWING NO.                    |             | 3 of 7  |     |  |    |  |    |



PERMIT SET 10/27/23  
NOT FOR CONSTRUCTION

40 20 0 40 80  
SCALE: 1"=40'



- LEGEND:
- 10' LIDAR CONTOUR
  - 1' LIDAR CONTOUR
  - 10' USGS GIS CONTOUR
  - 2' USGS GIS CONTOUR
  - 50— PROPOSED 5' MAJOR CONTOUR
  - PROPOSED 1' MINOR CONTOUR

GRADING NOTES:

- GRADING VOLUME ANALYSIS FROM AUTOCAD ESTIMATE:
  - CUT: 5,500 CY
  - FILL: 7,500 CY
  - NET: 2,000 CY (FILL)

SURVEY NOTES:

- ALL FEATURES SHOWN ARE BASED ON COMPILING THE FOLLOWING SOURCES:
  - BOUNDARY, CONTOURS, ABOVE GROUND UTILITIES, ROADWAY AND ACCESS CORRIDOR INFORMATION IS BASED ON "IMPROVEMENT LOCATION SURVEY - PREPARED FOR - SOUTHEASTERN CONNECTICUT REGIONAL RESOURCES RECOVERY AUTHORITY, 132 CONNECTICUT ROUTE 12" DATED AUGUST 29, 2023, PREPARED BY ROB HELLSTROM LAND SURVEYING INC., HEBRON, CONNECTICUT.
  - CONTOUR INFORMATION NORTH OF ACCESS EASEMENT WERE DOWNLOADED FROM USGS GIS SHAPE FILES IN METERS AND TRANSLATED TO THE STATE PLANE IN FEET.
  - AN AERIAL PHOTO FROM AUTOCAD'S GEOLOCATION FEATURE WAS USED TO PLACE SOME STRUCTURES IN THE NAD83 CONNECTICUT STATE PLANE ZONE, US FOOT (CTB3F).
  - DRAINAGE STRUCTURES NORTH OF BREWSTER ROAD ARE BASED ON A PLAN ENTITLED "EROSION & SEDIMENT CONTROL PLAN, DEVELOPED SITE" PREPARED BY AMERICAN REF-FUEL APPROXIMATE CIRA 1989-91.
- EXISTING UNDERGROUND UTILITIES (WATER, SEWER, ELECTRIC) SHOWN ARE APPROXIMATE FROM AS-BUILT SURVEY DRAWINGS FROM AMERICAN REF-FUEL AND NORWICH PUBLIC UTILITIES, DATED 1992 TO 2019.

SHEET TITLE  
GRADING & DRAINAGE PLAN

PROJECT TITLE  
ASP COMPOST FACILITY  
132 ROUTE 12  
TOWN OF PRESTON, CONN

CLIENT  
SOUTHEAST CONNECTICUT REGIONAL  
RESOURCE RECOVERY AUTHORITY  
7 HURLBUTT ROAD  
GALES FERRY, CONNECTICUT 06335

SCS ENGINEERS  
STEARNS, CONRAD AND SCHMIDT  
CONSULTING ENGINEERS, INC.  
4 EXECUTIVE BLVD. SUITE 305, SUFFERN, NY 10901  
PH: (845) 357-1510 FAX: (845) 357-1049  
PROJ. NO. 20230718.02  
DWG. BY: MJB  
CHK. BY: MJB  
APP. BY: GPM

CADD FILE:  
2-4\_ SITE PLAN

DATE:  
10/27/23

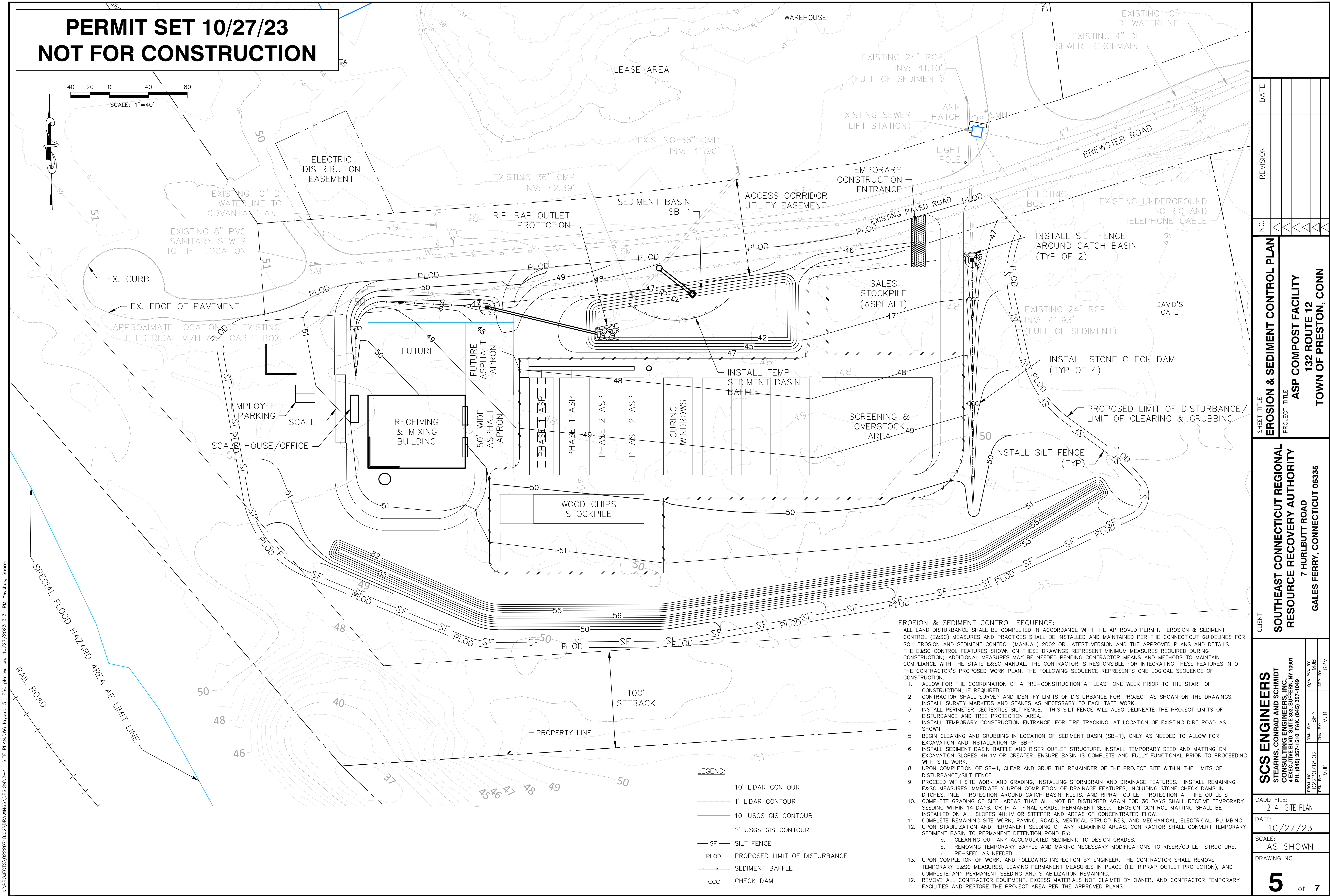
SCALE:  
AS SHOWN

DRAWING NO.



PERMIT SET 10/27/23  
NOT FOR CONSTRUCTION

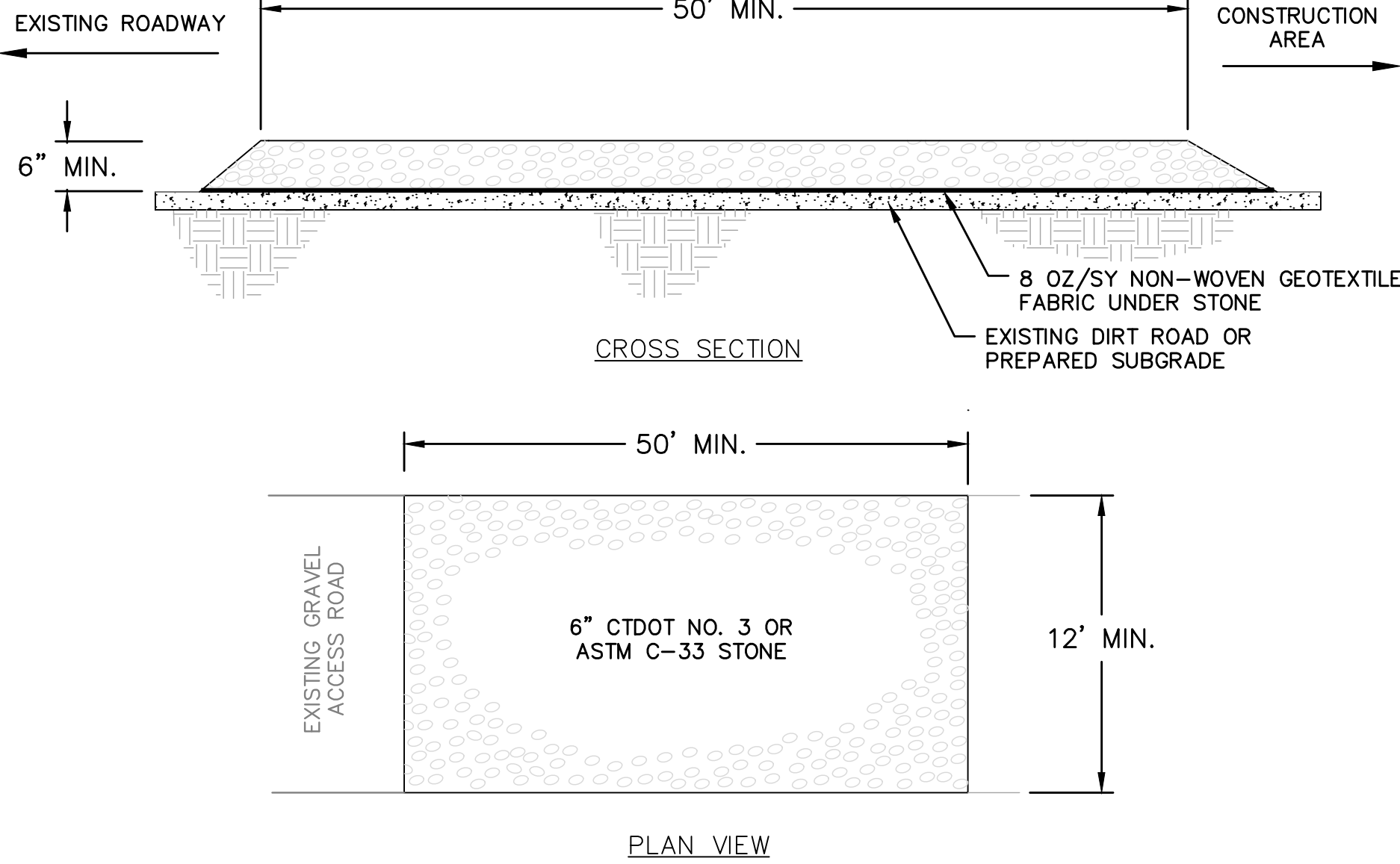
40 20 0 40 80  
SCALE: 1"=40'



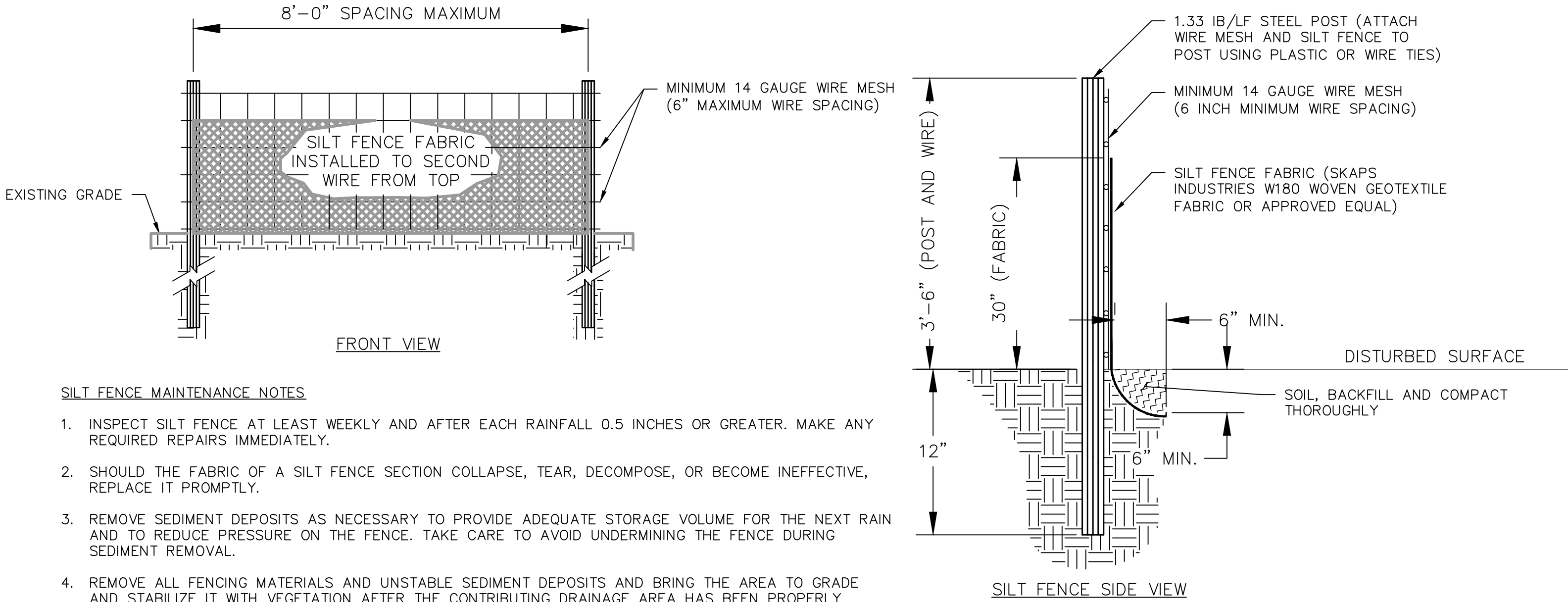
| SHEET TITLE  |  | PROJECT TITLE         |  |
|--|--|-----------------------|--|
| EROSION & SEDIMENT CONTROL PLAN                            |  | ASP COMPOST FACILITY  |  |
| SOUTHEAST CONNECTICUT REGIONAL RESOURCE RECOVERY AUTHORITY |  | 132 ROUTE 12          |  |
| 7 HURLBUTT ROAD  |  | TOWN OF PRESTON, CONN |  |
| GALES FERRY, CONNECTICUT 06335                             |  |                       |  |
| CLIENT   |  | DATE                  |  |
| SCS ENGINEERS  |  | REVISION              |  |
| STEARNS, CONRAD AND SCHMIDT CONSULTING ENGINEERS, INC.     |  | NO.                   |  |
| 4 EXECUTIVE BLVD. SUITE 303, SUFFERN, NY 10901             |  |                       |  |
| PH. (845) 357-1510 FAX. (845) 357-1049                     |  |                       |  |
| PROJ. NO. 2021018.02                                       |  |                       |  |
| DWN. BY: STHY  |  |                       |  |
| CHK. BY: MJB   |  |                       |  |
| APP. BY: GPM   |  |                       |  |
| CADD FILE:   |  | DATE:                 |  |
| 2-4_ SITE PLAN   |  | 10/27/23              |  |
| SCALE:   |  | AS SHOWN              |  |
| DRAWING NO.  |  | 5 of 7                |  |



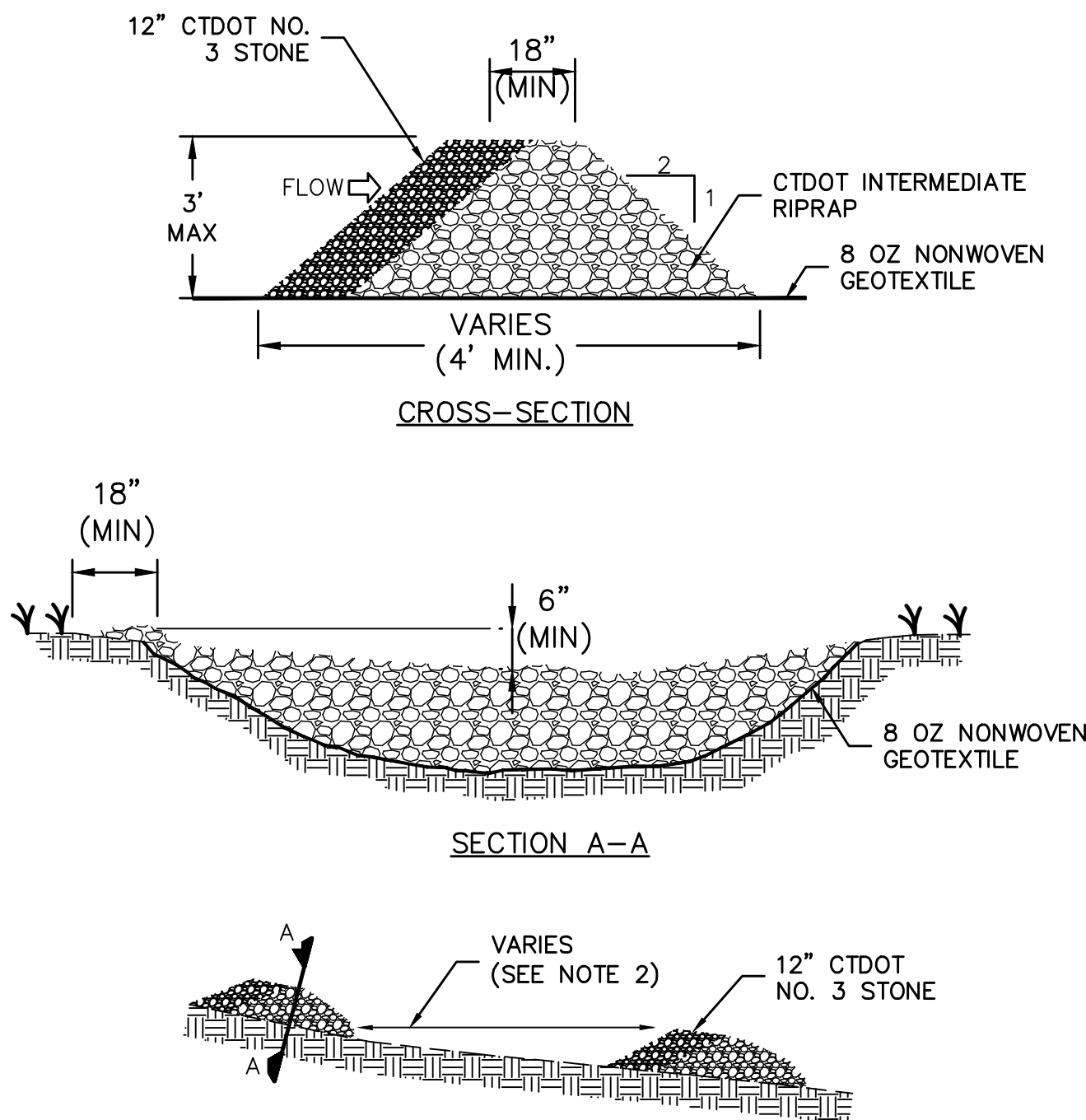
**PERMIT SET 10/27/23**  
**NOT FOR CONSTRUCTION**



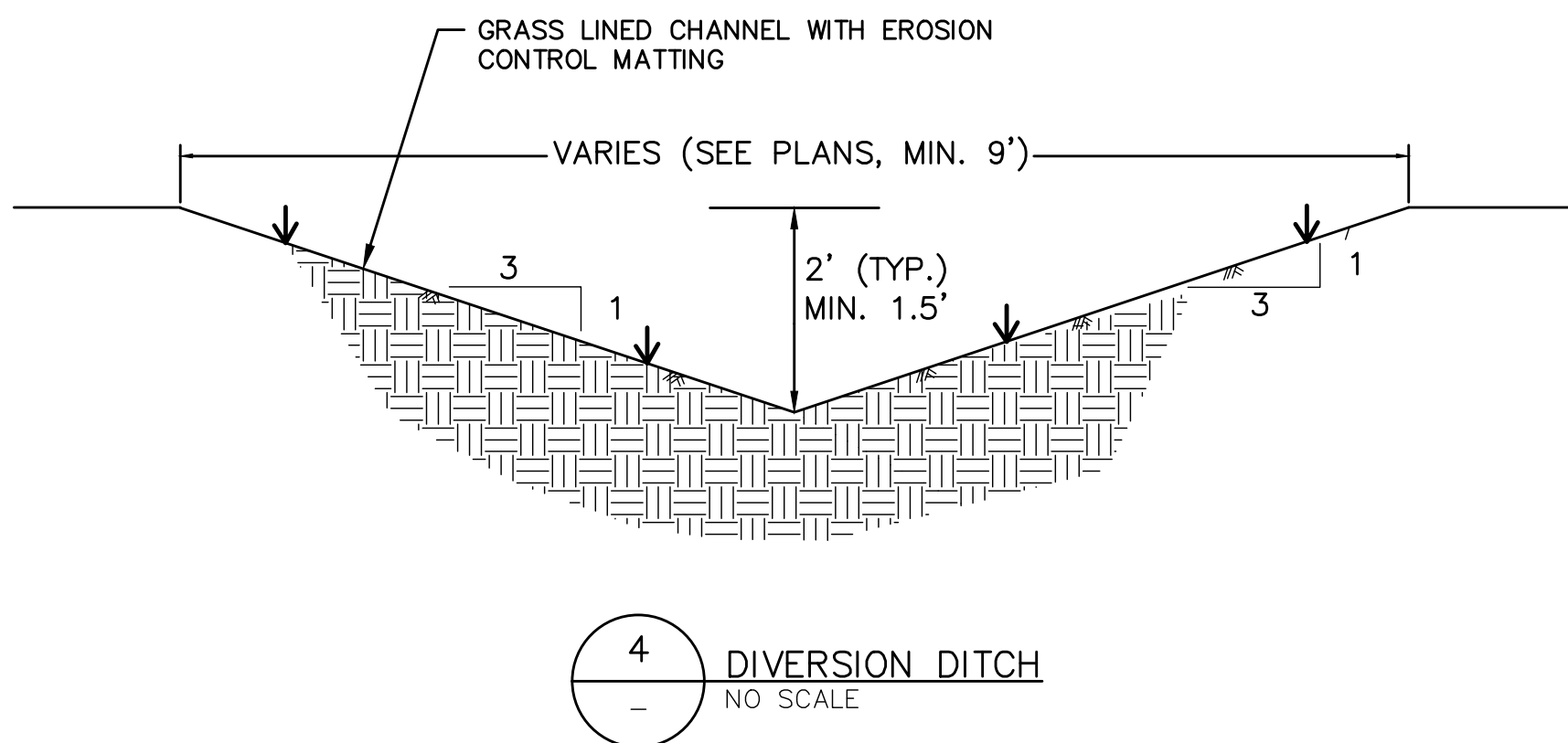
1. PRIOR TO INSTALLATION, THE AREA WHERE THE CONSTRUCTION ENTRANCE WILL BE INSTALLED SHALL BE CLEARED OF ALL VEGETATION, ROOTS, TOPSOIL, AND OTHER OBJECTIONABLE MATERIAL.
2. IF CONSTRUCTION ON THE SITE IS SUCH THAT MUD IS NOT REMOVED BY THE VEHICLE TRAVELING OVER THE STONE, THEN THE TIRES OF THE VEHICLE MUST BE WASHED BEFORE EXITING THE SITE TO THE PUBLIC ROADWAY.
3. TO PREVENT MUD OR SEDIMENT FROM THE LEAVING THE CONSTRUCTION SITE, PERIODIC PLACEMENT OF ADDITIONAL 2-3" STONE ON TOP OF THE PAD SHALL BE COMPLETED.
4. AFTER SITE IS STABILIZED WITH VEGETATION OR PERMANENT GROUND COVER, REMOVE TEMPORARY CONSTRUCTION ENTRANCE/EXIT.



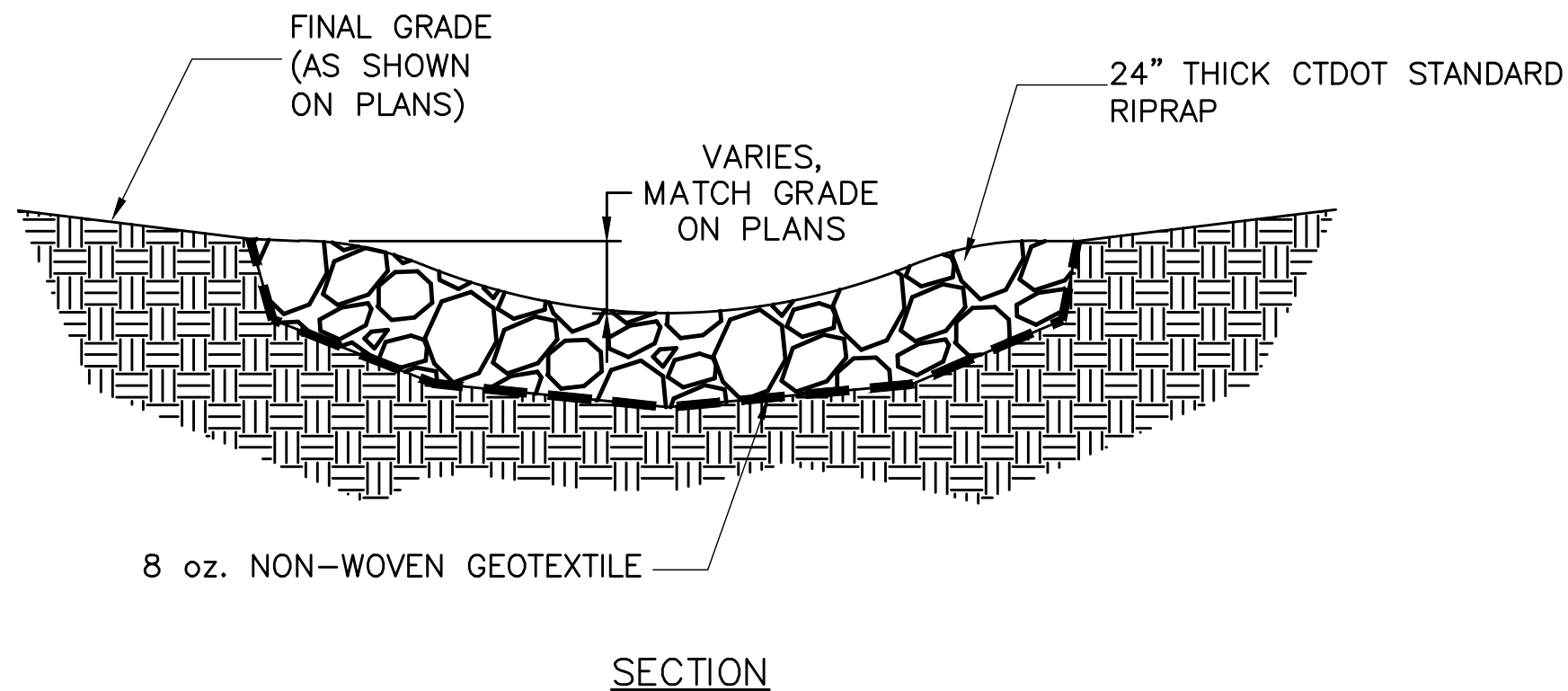
1. INSPECT SILT FENCE AT LEAST WEEKLY AND AFTER EACH RAINFALL 0.5 INCHES OR GREATER. MAKE ANY REQUIRED REPAIRS IMMEDIATELY.
2. SHOULD THE FABRIC OF A SILT FENCE SECTION COLLAPSE, TEAR, DECOMPOSE, OR BECOME INEFFECTIVE, REPLACE IT PROMPTLY.
3. REMOVE SEDIMENT DEPOSITS AS NECESSARY TO PROVIDE ADEQUATE STORAGE VOLUME FOR THE NEXT RAINFALL AND TO REDUCE PRESSURE ON THE FENCE. TAKE CARE TO AVOID UNDERMINING THE FENCE DURING SEDIMENT REMOVAL.
4. REMOVE ALL FENCING MATERIALS AND UNSTABLE SEDIMENT DEPOSITS AND BRING THE AREA TO GRADE AND STABILIZE IT WITH VEGETATION AFTER THE CONTRIBUTING DRAINAGE AREA HAS BEEN PROPERLY STABILIZED WITH VEGETATION OR PERMANENT GROUND COVER.



1. CHECK DAMS MAY BE USED IN SLOPING DITCHES OR CHANNELS TO SLOW VELOCITY OR TO CREATE SEDIMENT TRAPS.
2. BOTTOM OF UPSTREAM CHECK DAM SHOULD BE AT THE SAME ELEVATION AS THE TOP OF THE SUBSEQUENT CHECK DAM.



DIVERSION DITCH  
NO SCALE



1. PROVIDE RIPRAP EXTENTS TO THE LIMITS SHOWN IN PLAN VIEW.
2. TOP OF RIPRAP SHALL BE FLUSH WITH STRUCTURE INVERT, IF APPLICABLE, AND MATCH FINISHED GRADE SHOWN ON GRADING PLAN.



| NO. | REVISION | DATE |
|-----|----------|------|
| △   |          |      |
| △   |          |      |
| △   |          |      |
| △   |          |      |
| △   |          |      |

## DETAILS 1

**TITLE**  
**ASP COMPOST FACILITY**  
**132 ROUTE 12**  
**TOWN OF PRESTON, CONN**

**SOUTHEAST CONNECTICUT REGIONAL  
RESOURCE RECOVERY AUTHORITY**  
7 HURLBUTT ROAD  
GALES FERRY, CONNECTICUT 06335

**SCS ENGINEERS**  
STEARNS, CONRAD AND SCHMIDT  
CONSULTING ENGINEERS, INC.  
4 EXECUTIVE BLVD. SUITE 303, SUFFERN, NY 1  
PH. (845) 357-1510 FAX. (845) 357-1049

DD FILE:  
2-4\_ SITE PLAN

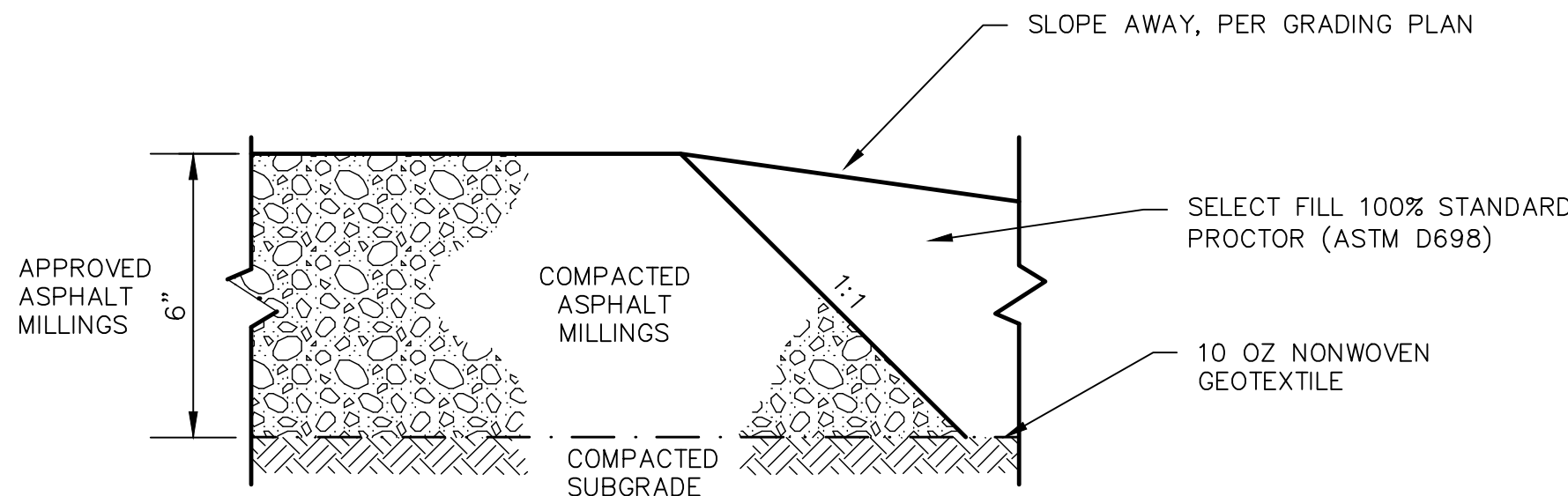
DATE:  
10/27/23

SCALE:  
AS SHOWN

DRAWING NO.

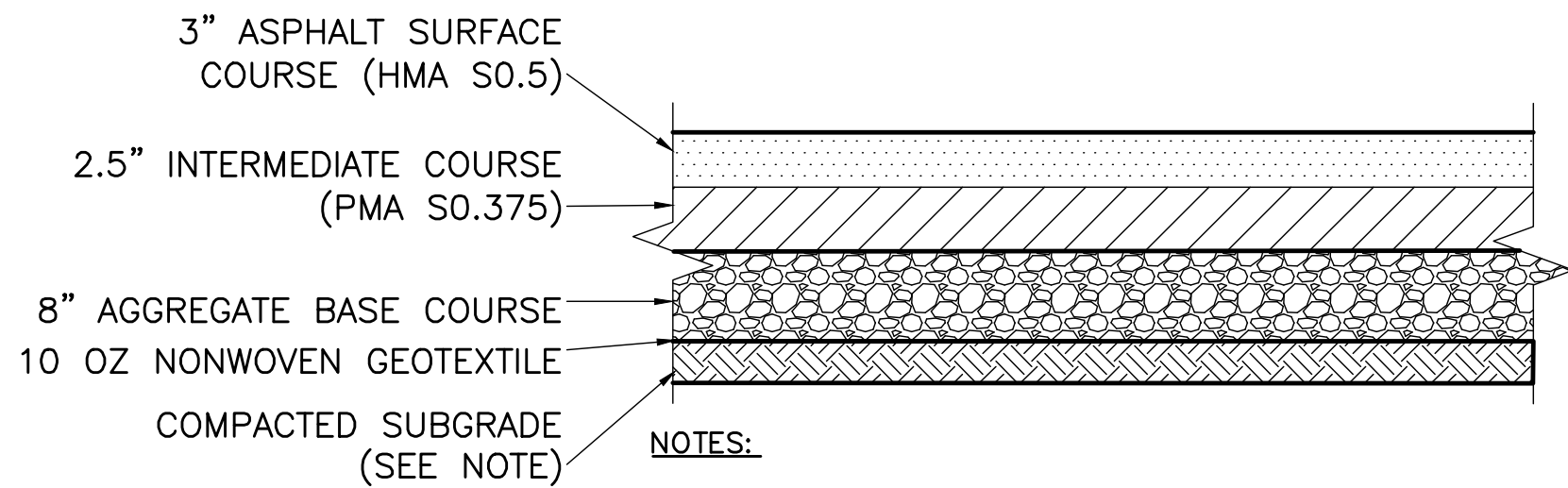
6 of 7

PERMIT SET 10/27/23  
NOT FOR CONSTRUCTION



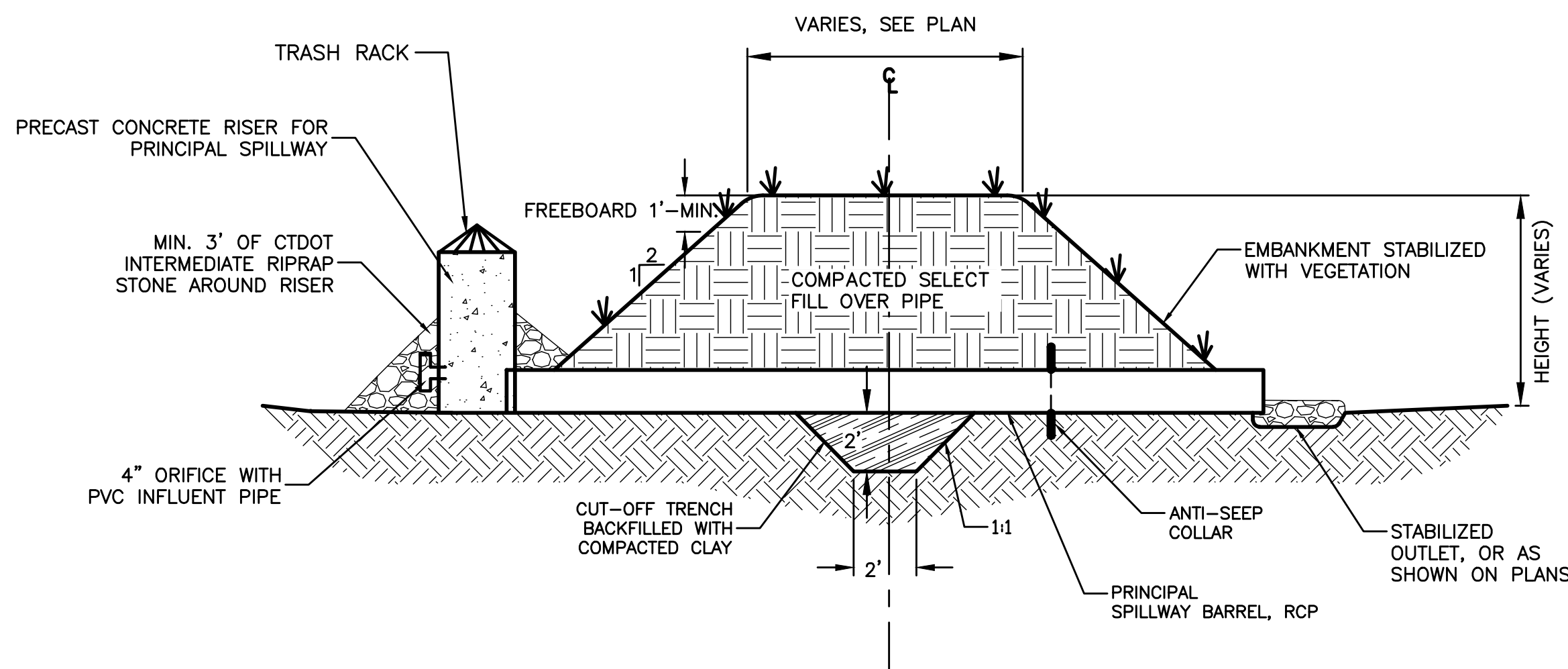
NOTES:

1. PROOFROLL NATURAL SOILS IN CUT AREAS PER SPECIFICATIONS.
2. IN FILL AREAS, PLACE 2" MINIMUM SELECT FILL COMPACTED TO 98% STD. PROCTOR (ASTM D698).
4. STONE SHALL BE PLACED IN TWO 3" LIFTS, ROLLED AND COMPACTED IN PLACE.

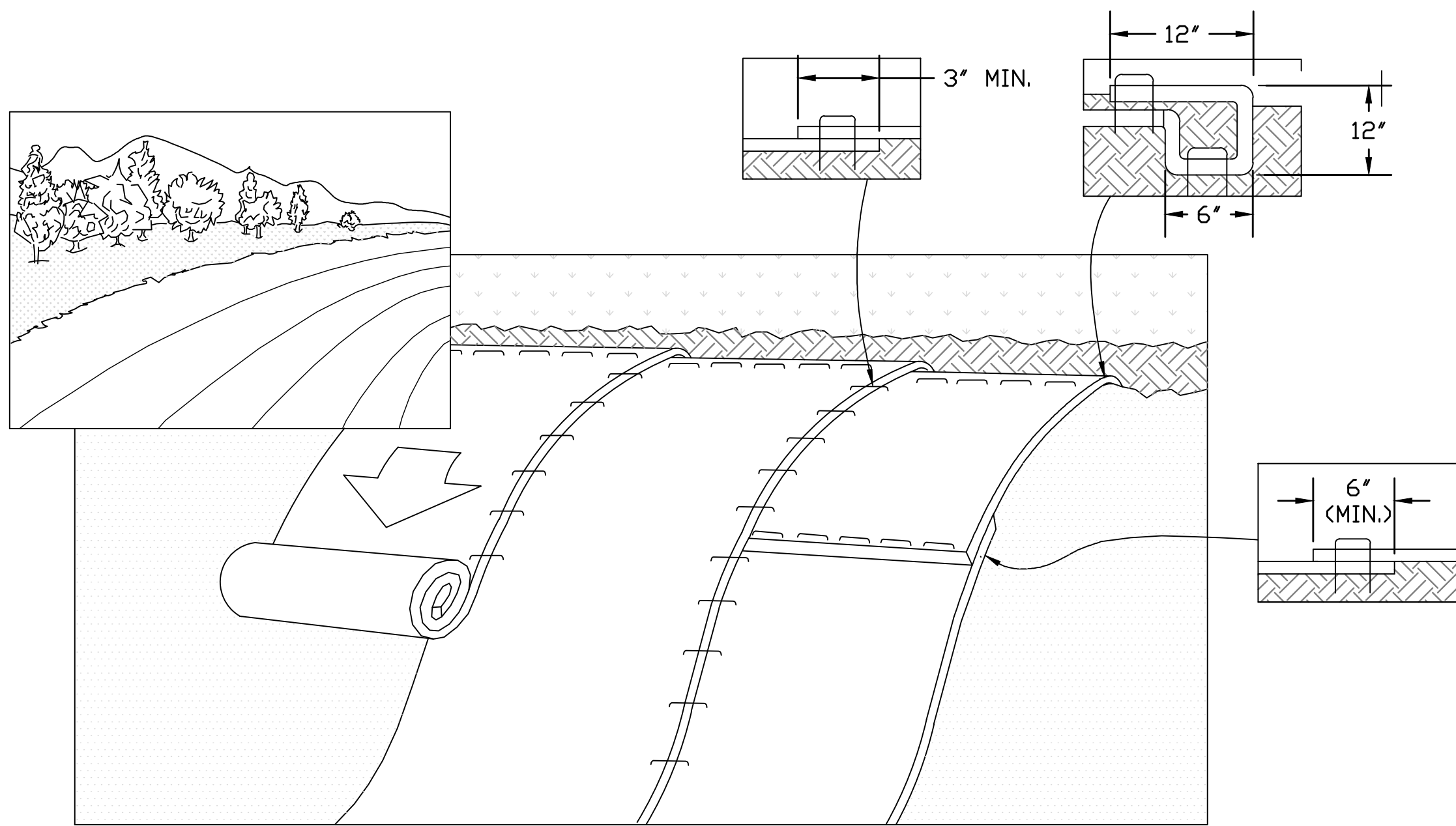


NOTES:

1. 2' MINIMUM SELECT FILL COMPACTED TO 100% STD. PROCTOR (ASTM D698).
2. AGGREGATE BASE COURSE SHALL BE PLACED AND COMPACTED IN TWO 4" LIFTS.



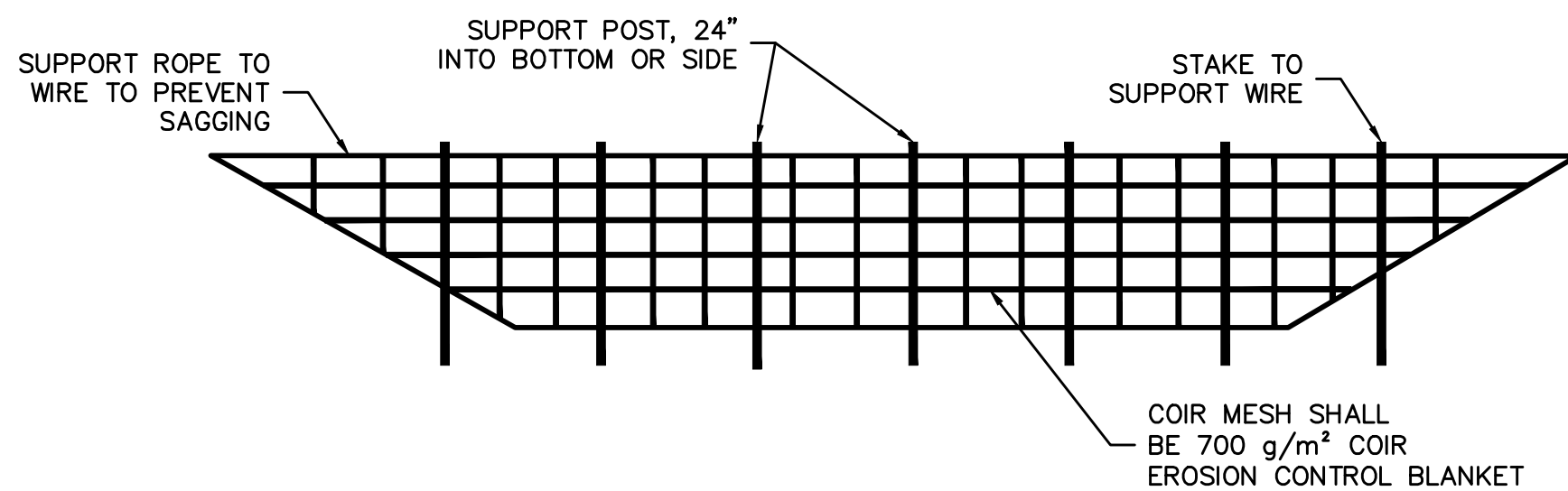
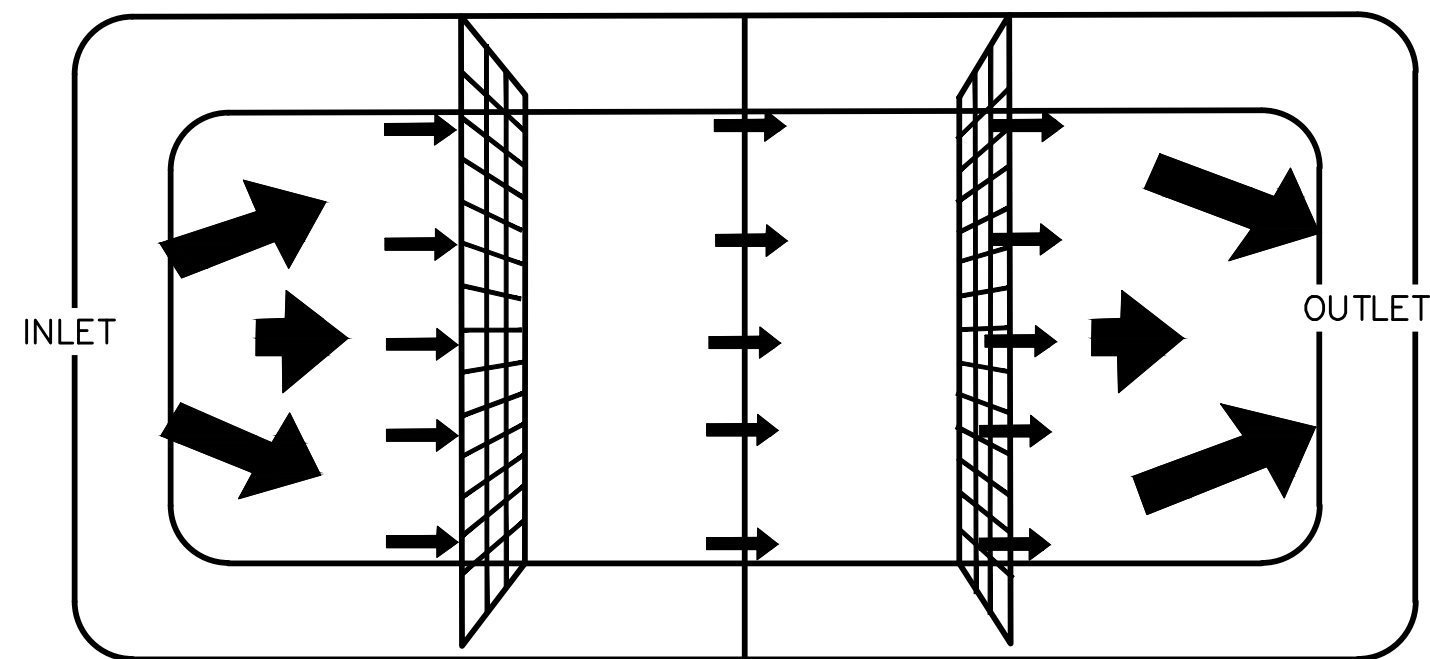
| SEDIMENT BASIN SCHEDULE |                     |                               |                   |                 |                 |                  |                           |                  |                         |                   |                  |                         |
|-------------------------|---------------------|-------------------------------|-------------------|-----------------|-----------------|------------------|---------------------------|------------------|-------------------------|-------------------|------------------|-------------------------|
| BASIN #                 | TOP BERM ELEV. (FT) | EMERGENCY SPILLWAY ELEV. (FT) | TOP OF RISER (FT) | BERM WIDTH (FT) | RISER SIZE (IN) | BARREL SIZE (IN) | BARREL INV. IN ELEV. (FT) | BARREL SLOPE (%) | RISER ORIFICE INV. (FT) | BASIN LENGTH (FT) | BASIN WIDTH (FT) | BASIN BOTTOM ELEV. (FT) |
| SB-1                    | 47                  | N/A                           | 45.50             | N/A             | 48 X 48         | 24               | 42.50                     | 0.50             | 43                      | 250               | 65               | 42.00                   |



GENERAL NOTES:

1. TEMPORARY MATTING INSTALLED ON SLOPES SHALL BE NORTH AMERICAN GREEN TYPE DS 75 OR ENGINEER APPROVED EQUIVALENT.
2. IF SEEDING PRIOR TO INSTALLING ROLLED EROSION CONTROL PRODUCTS (REC's), FOLLOW SEED BED PREPARATION STEPS, AND APPLY APPROVED TYPES AND QUANTITIES OF LIME, FERTILIZER, AND SEED.
3. BEGIN AT THE TOP OF THE SLOPE BY PLACING THE REC's 2-3 FEET OVER THE TOP OF THE SLOPE. ANCHOR THE REC's IN A 12" DEEP X 6" WIDE TRENCH WITH APPROXIMATELY 12" OF REC's EXTENDED BEYOND THE UP-SLOPE PORTION OF THE TRENCH. ANCHOR THE REC's WITH STAPLES/STAKES APPROXIMATELY 12" APART IN THE BOTTOM OF THE TRENCH. AFTER STAPLING THE REC's IN THE TRENCH, BACKFILL AND COMPACT WITH SOIL. THE REC's EXTENDING PAST THE COMPACTED TRENCH SHOULD BE LAPPED ACROSS THE TRENCH AND STAPLED/STAKED TO THE REC's EXTENDING DOWNSLOPE. SECURE REC's OVER COMPACTED SOIL WITH A ROW OF STAPLES/STAKES SPACED APPROXIMATELY 12" APART ACROSS THE WIDTH OF THE REC's.
4. ROLL THE REC's DOWN OR ALONG THE SLOPE MAINTAINING DIRECT CONTACT BETWEEN THE SOIL AND REC. REC's WILL UNROLL WITH APPROPRIATE SIDE AGAINST THE SOIL SURFACE. SECURELY FASTENED THE REC's TO SOIL SURFACE BY PLACING STAPLES/STAKES IN A 3 FOOT CENTER-TO-CETNER PATTERN, AS WELL AS IN THE APPROPRIATE LOCATIONS AS SHOWN IN THE STAPLE PATTERN GUIDE. WHEN USING THE DOT SYSTEM, STAPLES/STAKES SHOULD BE PLACED THROUGH EACH OF THE COLORED DOTS CORRESPONDING TO THE APPROPRIATE STAPLE PATTERN.
5. THE EDGES OF PARALLEL REC's MUST BE STAPLED WITH A MINIMUM OF 3" OVERLAP DEPENDING ON REC's TYPE. STAPLES/STAKES SHOULD BE PLACED A MAXIMUM OF 5" APART ALONG OVERLAP.
7. CONSECUTIVE REC's SPLICED DOWN THE SLOPE MUST BE PLACED END OVER END (SHINGLE STYLE) WITH A MINIMUM 6" OVERLAP.
8. AT THE TOE OF THE SLOPE, EXTEND THE REC's ON THE LEVEL SURFACE SO A MINIMUM OF 4" OF REC CAN BE TURNED UNDER. STAPLE THE TURNED END AT 12" INTERVALS.

NOTE: \*MINIMUM STAPLE SIZE IS 6" LONG BY 1" WIDE, MINIMUM STAKE LENGTH IS 12". DEPENDING ON SOIL CONDITIONS, LARGER STAKES MAY BE REQUIRED.



| NO. | REVISION | DATE |
|-----|----------|------|
| 1   |          |      |
| 2   |          |      |
| 3   |          |      |
| 4   |          |      |
| 5   |          |      |

| SHEET TITLE | PROJECT TITLE   |
|-------------|---|
| DETAILS 2   | ASP COMPOST FACILITY<br>132 ROUTE 12<br>TOWN OF PRESTON, CONN |

| CLIENT | SOUTHEAST CONNECTICUT REGIONAL<br>RESOURCE RECOVERY AUTHORITY<br>7 HURLBUTT ROAD<br>GALES FERRY, CONNECTICUT 06335 |
|--------|--|
|--------|--|

|  |   |  |                     |
|--|---|--|---------------------|
| SCS ENGINEERS<br>STEARNS, CONRAD AND SCHMIDT<br>CONSULTING ENGINEERS, INC.<br>4 EXECUTIVE BLDG. SUITE 305, SUFFERN, NY 10901<br>PH. (845) 357-1049 FAX. (845) 357-1049 | PROJ. NO. 22220718.02<br>CHK. BY: MJB<br>APP. BY: MJB | DWN. BY: SHY<br>CHK. BY: MJB<br>APP. BY: MJB | Q/A REVIEWED<br>GPM |
|--|---|--|---------------------|

|                              |
|------------------------------|
| CADD FILE:<br>2-4_ SITE PLAN |
| DATE:<br>10/27/23            |
| SCALE:<br>AS SHOWN           |
| DRAWING NO.                  |



## Attachment 2: Budget Table

**Southeastern Connecticut Regional Resources Recovery Authority**  
**Regional Compost Facility**  
**Materials Management Infrastructure Grant (MMI)**  
**Budget Table**

| Construction Items                                | Quantity | Units | Unit Price   | Extended Price        |
|---|----------|-------|--------------|-----------------------|
| 1 Mob/Demob                                       | 1        | LS    | \$120,000.00 | \$120,000.00          |
| 2 Surveying                                       | 1        | LS    | \$40,000.00  | \$40,000.00           |
| 3 Rock Entrance                                   | 1        | EA    | \$9,500.00   | \$9,500.00            |
| 4 Super Silt Fence                                | 1500     | LF    | \$20.00      | \$30,000.00           |
| 5 Sediment Basin                                  | 1        | LS    | \$160,000.00 | \$160,000.00          |
| 6 Catch Basin                                     | 2        | EA    | \$17,500.00  | \$35,000.00           |
| 7 15" HDPE Culvert                                | 120      | LF    | \$210.00     | \$25,200.00           |
| 8 Rip Rap Outlet Protection                       | 1        | EA    | \$10,200.00  | \$10,200.00           |
| 9 Silt Fence Around Catch Basin                   | 2        | EA    | \$2,300.00   | \$4,600.00            |
| 10 Jet Clean Existing Culvert                     | 1        | LS    | \$8,800.00   | \$8,800.00            |
| 11 Ditch w/ ECM                                   | 460      | LF    | \$60.00      | \$27,600.00           |
| 12 Ditch Check                                    | 4        | EA    | \$3,000.00   | \$12,000.00           |
| 13 Clearing & Grubbing                            | 1        | LS    | \$105,000.00 | \$105,000.00          |
| 14 Site Excavation & Grading                      | 1        | LS    | \$485,000.00 | \$485,000.00          |
| 15 Screening Berm w/ ECM                          | 1        | LS    | \$65,000.00  | \$65,000.00           |
| 16 6" HDPE Contact Water Piping                   | 135      | LF    | \$290.00     | \$39,150.00           |
| 17 D/C HDPE Contact Water Sump w/ Pump            | 1        | EA    | \$90,000.00  | \$90,000.00           |
| 18 2"x 4" D/C HDPE Contact Water Forcemain        | 390      | LF    | \$160.00     | \$62,400.00           |
| 19 Contact Water Tank                             | 1        | LS    | \$88,000.00  | \$88,000.00           |
| 20 12" HDPE Aeration Piping                       | 1        | LS    | \$155,000.00 | \$155,000.00          |
| 21 ASP Bays                                       | 1        | LS    | \$455,000.00 | \$455,000.00          |
| 22 Aeration Blower Installation                   | 1        | EA    | \$18,000.00  | \$18,000.00           |
| 23 Bin Block Push Walls - Glass Bunker & Building | 1        | LS    | \$75,000.00  | \$75,000.00           |
| 24 Receiving & Mixing Building Foundation & Floor | 1        | LS    | \$198,000.00 | \$198,000.00          |
| 25 Building                                       | 1        | LS    | \$137,500.00 | \$137,500.00          |
| 26 Asphalt Millings - 6" Thick                    | 7560     | SY    | \$35.00      | \$264,600.00          |
| 27 Paving - 5.5" Thick                            | 1470     | SY    | \$130.00     | \$191,100.00          |
| 28 2" Water Service                               | 220      | LF    | \$220.00     | \$48,400.00           |
| 29 6" Sanitary Drain                              | 160      | LF    | \$270.00     | \$43,200.00           |
| 30 Scalehouse & Scale                             | 1        | LS    | \$476,000.00 | \$476,000.00          |
| 31 Cut & Restore Existing Road for Utilities      | 1        | LS    | \$36,000.00  | \$36,000.00           |
| 32 Traffic Control                                | 1        | LS    | \$13,000.00  | \$13,000.00           |
| 33 Bollards                                       | 4        | EA    | \$2,400.00   | \$9,600.00            |
| 34 8' Chainlink Fencing w/ Gates                  | 2030     | LF    | \$115.00     | \$233,450.00          |
| 35 Signs  | 7        | EA    | \$3,700.00   | \$25,900.00           |
| 36 Electrical                                     | 1        | LS    | \$490,000.00 | \$490,000.00          |
| 37 Replace Topsoil & Permanent Seeding            | 1        | LS    | \$155,000.00 | \$155,000.00          |
| Subtotal  |          |       |              | \$4,442,200.00        |
| Contingency                                       |          |       | 5%           | \$222,110.00          |
| <b>Total</b>                                      |          |       |              | <b>\$4,664,310.00</b> |

### **Attachment 3: Environmental Justice Public Participation Plan Approval Letters**



September 27, 2024

Mr. David Aldridge, Executive Director  
The Southeastern Connecticut Regional Resources Recovery Authority (SCRRRA)  
7 Hurlbutt Rd., Ste. O  
Gales Ferry, CT 06335

Re: Tentative Approval of the Environmental Justice Public Participation Plan – SCRRRA Regional Compost Facility - 123 Military Highway (Rt 12), Preston, CT

Dear Mr. Aldridge:

The Environmental Justice Public Participation Plan for the SCRRRA compost volume reduction facility permit was received on August 20, 2024, and revised on September 24, 2024. A review of the public outreach and engagement information submitted in Parts I, II, III and IV satisfy the requirements under Sec. 22a-20a of the Connecticut General Statutes and the Connecticut Department of Energy and Environmental Protection's Environmental Equity Policy. The date, time and meeting location were confirmed with the Office of Equity and Environmental Justice staff. The Public Information meeting will take place on November 25, 2024, at 6:00 pm at the facility located at the SCRRRA Office at 7 Hurlbutt Road, Gales Ferry. Notice of the meeting will be published in the Norwich Bulletin on November 4, 2024.

**The Environmental Justice Public Participation Plan is Tentatively Approved.**

Sincerely,

*Edith Pestana* (electronic signature)

Edith Pestana, MPH

cc. Elizabeth Chuff, Operations Manager  
Kevin Clements



December 11, 2024

Mr. David Aldridge, Executive Director  
The Southeastern Connecticut Regional Resources Recovery Authority (SCRRA)  
7 Hurlbutt Rd., Ste. O  
Gales Ferry, CT 06335

Re: Approval of the Environmental Justice Public Participation Plan Final Report– SCRRA Regional Compost Facility - 123 Military Highway (Rt 12), Preston, CT

Dear Mr. Aldridge:

The Environmental Justice Public Participation Plan Final Report for the SCRRA compost volume reduction facility permit was received on December 4, 2024. A review of the documented public outreach and engagement information submitted in Parts I, II, III and IV of the Final Report satisfy the requirements under Sec. 22a-20a of the Connecticut General Statutes (CGS) and the Connecticut Department of Energy and Environmental Protection's Environmental Equity Policy. The initial public information meeting was held on November 25, 2024, at 6 PM at the SCRRA Offices in Gales Ferry. The meeting was scheduled and properly noticed in compliance with CGS 22a-20a. A video recording of the meeting is included in the Final Report.

**The Environmental Justice Public Participation Plan Final Report is Approved.**

Sincerely,

*Edith Pestana* (electronic signature)

Edith Pestana, MPH

cc. Elizabeth Chuff, Operations Manager  
Kevin Clements, CT DEEP





#### **Attachment 4: Letters of Support**

1. Town of East Lyme
2. Town of Griswold
3. Town of Groton
4. Town of Ledyard
5. Town of Montville
6. City of New London
7. Town of North Stonington
8. City of Norwich
9. Town of Preston
10. Town of Sprague
11. Town of Stonington
12. Town of Waterford
13. Town of Groton Conservation Commission
14. State Senator Martha Marx
15. State Senator Cathy Osten
16. State Representative Aundre Bumgardner
17. State Representative Brian Lanoue
18. State Representative Christine Conley
19. State Representative Greg Howard
20. State Representative Derell Wilson

# Town of

P.O. Drawer 519  
First Selectman  
Daniel Cunningham



# East Lyme

108 Pennsylvania Ave  
Niantic, Connecticut 06357  
Phone: 860-691-4101  
Fax: 860-691-0351

October 24, 2024

Department of Energy and Environmental Protection (DEEP)  
Materials Management Infrastructure Grant Program  
79 Elm Street  
Hartford, CT 06106-5127

Re: Materials Management Infrastructure (MMI) Grant Application

Dear MMI Grant Application Evaluation Team,

It is my pleasure to submit this letter in support of the proposal "Building a Regional Compost Facility for Southeastern Connecticut" submitted by the Southeastern Connecticut Regional Resources Recovery Authority (SCRRRA). SCRRRA's proposed facility will provide the infrastructure needed to facilitate diversion of food waste from the municipal solid waste (MSW) stream in southeastern Connecticut, reducing MSW tonnage, cost, pollution and reliance on out-of-state disposal options. The facility will provide capacity to help advance the state's progress toward the 60% diversion rate goal set forth by the state's Comprehensive Materials Management Strategy (CMMS). It is my hope that the Department will strongly consider SCRRRA's application.

As First Selectman for the Town of East Lyme, I am confident that SCRRRA's project aligns with Connecticut's solid waste diversion and self-sufficiency goals, the State's statutorily established integrated hierarchy of waste management methodologies, the CMMS, and the vision of the Connecticut Coalition for Sustainable Materials Management (CCSMM). The project also aligns with the Connecticut statute for large-scale food waste generators, CGS Section 22a-226e "Recycling of Source Separated Materials", which states that all generators of 26 tons or more of food waste must separate it from other solid waste and recycle it at an authorized composting facility, if one is located within 20 miles of the generator. As of January 1, 2025, the 20-mile stipulation will be dropped, requiring all large-scale generators in Connecticut to recycle their food waste. The SCRRRA compost facility will be a key factor in making the state's vision a reality in the southeastern region of the state.

SCRRRA has been a stalwart provider of solid waste disposal solutions for its twelve member municipalities in southeastern Connecticut for over 30 years, managing the needs of the region with fiscally responsible and environmentally conscious oversight. The proposed food waste compost facility is a natural addition to the services SCRRRA manages for our communities.

On behalf of the Town of East Lyme and the greater region, thank you for considering SCRRRA's proposal.

Sincerely,

A handwritten signature in blue ink, reading "Daniel B. Cunningham". The signature is fluid and cursive, with a long horizontal stroke at the end.

Daniel Cunningham  
First Selectman

Cc: David Aldridge, SCRRRA Executive Director  
Joe Bragaw, East Lyme Public Works Director



# Town of Griswold

First Selectman's Office

Phone 860-376-7060

Fax 860-376-7109



October 15, 2024

Department of Energy and Environmental Protection (DEEP)  
Materials Management Infrastructure Grant Program  
79 Elm Street  
Hartford, CT 06106-5127

Re: Materials Management Infrastructure (MMI) Grant Application

Dear MMI Grant Application Evaluation Team,

It is my pleasure to submit this letter in support of the proposal "Building a Regional Compost Facility for Southeastern Connecticut" submitted by the Southeastern Connecticut Regional Resources Recovery Authority (SCRRRA). SCRRRA's proposed facility will provide the infrastructure needed to facilitate diversion of food waste from the municipal solid waste (MSW) stream in southeastern Connecticut, reducing MSW tonnage, cost, pollution and reliance on out-of-state disposal options. The facility will provide capacity to help advance the state's progress toward the 60% diversion rate goal set forth by the state's Comprehensive Materials Management Strategy (CMMS). It is my hope that the Department will strongly consider SCRRRA's application.

As First Selectman for The Town of Griswold, CT, I am confident that SCRRRA's project aligns with Connecticut's solid waste diversion and self-sufficiency goals, the State's statutorily established integrated hierarchy of waste management methodologies, the CMMS, and the vision of the Connecticut Coalition for Sustainable Materials Management (CCSMM). The project also aligns with the Connecticut statute for large-scale food waste generators, CGS Section 22a-226e "Recycling of Source Separated Materials", which states that all generators of 26 tons or more of food waste must separate it from other solid waste and recycle it at an authorized composting facility, if one is located within 20 miles of the generator. As of January 1, 2025, the 20-mile stipulation will be dropped, requiring all large-scale generators in Connecticut to recycle their food waste. The SCRRRA compost facility will be a key factor in making the state's vision a reality in the southeastern region of the state.

SCRRRA has been a stalwart provider of solid waste disposal solutions for its twelve member municipalities in southeastern Connecticut for over 30 years, managing the needs of the region with fiscally responsible and environmentally conscious oversight. The proposed food waste compost facility is a natural addition to the services SCRRRA manages for our communities.

On behalf of my community and the greater region, thank you for considering SCRRRA's proposal.

Sincerely,

A handwritten signature in black ink, reading "Tina R. Falck".

Tina R. Falck,  
First Selectman

cc: David Aldridge, SCRRRA Executive Director



# TOWN OF GROTON

## OFFICE OF THE TOWN MANAGER

John Burt  
Town Manager  
jburt@groton-ct.gov

45 Fort Hill Road, Groton, Connecticut 06340  
Telephone (860) 441-6630 Fax (860) 441-6632  
www.groton-ct.gov

October 11, 2024

Department of Energy and Environmental Protection (DEEP)  
Materials Management Infrastructure Grant Program  
79 Elm Street  
Hartford, CT 06106-5127

Re: Materials Management Infrastructure (MMI) Grant Application

Dear MMI Grant Application Evaluation Team,

It is my pleasure to submit this letter in support of the proposal "Building a Regional Compost Facility for Southeastern Connecticut" submitted by the Southeastern Connecticut Regional Resources Recovery Authority (SCRRA). SCRRA's proposed facility will provide the infrastructure needed to facilitate diversion of food waste from the municipal solid waste (MSW) stream in southeastern Connecticut, reducing MSW tonnage, cost, pollution and reliance on out-of-state disposal options. The facility will provide capacity to help advance the state's progress toward the 60% diversion rate goal set forth by the state's Comprehensive Materials Management Strategy (CMMS). It is my hope that the Department will strongly consider SCRRA's application.

As the Town Manager for the Town of Groton, I am confident that SCRRA's project aligns with Connecticut's solid waste diversion and self-sufficiency goals, the State's statutorily established integrated hierarchy of waste management methodologies, the CMMS, and the vision of the Connecticut Coalition for Sustainable Materials Management (CCSMM). The project also aligns with the Connecticut statute for large-scale food waste generators, CGS Section 22a-226e "Recycling of Source Separated Materials", which states that all generators of 26 tons or more of food waste must separate it from other solid waste and recycle it at an authorized composting facility, if one is located within 20 miles of the generator. As of January 1, 2025, the 20-mile stipulation will be dropped, requiring all large-scale generators in Connecticut to recycle their food waste. The SCRRA compost facility will be a key factor in making the state's vision a reality in the southeastern region of the state.

SCRRA has been a stalwart provider of solid waste disposal solutions for its twelve-member municipalities in southeastern Connecticut for over 30 years, managing the needs of the region with fiscally responsible and environmentally conscious oversight. The proposed food waste compost facility is a natural addition to the services SCRRA manages for our communities.

On behalf of my community and the greater region, thank you for considering SCRRA's proposal.

Sincerely,

John Burt

Cc: David Aldridge, SCRRA Executive Director

*"Submarine Capital of the World"*





# TOWN OF LEDYARD CONNECTICUT OFFICE OF THE MAYOR

Fred B. Allyn III  
Mayor

Kristen Chapman  
Executive Assistant to the Mayor

741 Colonel Ledyard Highway  
Ledyard, CT 06339-1551  
(860) 464-3222  
FAX (860) 464-8455

October 29, 2024

Department of Energy and Environmental Protection (DEEP)  
Materials Management Infrastructure Grant Program  
79 Elm Street  
Hartford, CT 06106-5127

Re: Materials Management Infrastructure (MMI) Grant Application

Dear MMI Grant Application Evaluation Team,

I write today to offer my full support of the proposed "Building a Regional Compost Facility for Southeastern Connecticut" submitted by the Southeastern Connecticut Regional Resources Recovery Authority (SCRRA). SCRRA's proposed facility will provide the infrastructure needed to facilitate diversion of food waste from the municipal solid waste (MSW) stream in southeastern Connecticut, reducing MSW tonnage, cost, pollution and reliance on out-of-state landfills, the latter of which represents the worst option. This regional facility will provide capacity to help Southeastern CT move toward the 60% diversion rate goal set forth by the state's Comprehensive Materials Management Strategy (CMMS). This regional opportunity is a great project for the Department to support.

As Mayor of Ledyard, and the co-chair of our COG's solid waste subcommittee, I am confident that this project aligns with CT's solid waste diversion and self-sufficiency goals, the established hierarchy of waste management methodologies, the CMMS, and Connecticut Coalition for Sustainable Materials Managements (CCSMM) vision. The project also aligns with the Connecticut statute for large-scale food waste generators, CGS Section 22a-226e "Recycling of Source Separated Materials", which states that all generators of 26 tons or more of food waste must separate it from other solid waste and recycle it at an authorized composting facility, if one is located within 20 miles of the generator. As of January 1, 2025, the 20-mile stipulation will be dropped, requiring all large-scale generators in Connecticut to recycle their food waste. The SCRRA facility will be a key in making the state's vision a reality in this region.

On behalf of Ledyard, the COG subcommittee and the region, thank you for considering SCRRA's regional food waste composting proposal.

Sincerely,

Fred B. Allyn III

cc: David Aldridge, SCRRA Executive Director  
Mayor@ledyardct.org

www.ledyardct.org



# TOWN OF MONTVILLE

## Office of the Mayor

310 Norwich-New London Turnpike  
Uncasville, Connecticut 06382



10/16/2024

Department of Energy and Environmental Protection (DEEP)  
Materials Management Infrastructure Grant Program  
79 Elm Street  
Hartford, CT 06106-5127

Re: Materials Management Infrastructure (MMI) Grant Application

Dear MMI Grant Application Evaluation Team,

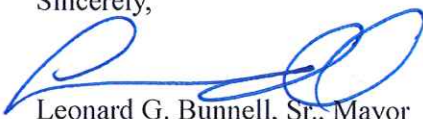
It is my pleasure to submit this letter in support of the proposal "Building a Regional Compost Facility for Southeastern Connecticut" submitted by the Southeastern Connecticut Regional Resources Recovery Authority (SCRRRA). SCRRRA's proposed facility will provide the infrastructure needed to facilitate diversion of food waste from the municipal solid waste (MSW) stream in southeastern Connecticut, reducing MSW tonnage, cost, pollution and reliance on out-of-state disposal options. The facility will provide capacity to help advance the state's progress toward the 60% diversion rate goal set forth by the state's Comprehensive Materials Management Strategy (CMMS). It is my hope that the Department will strongly consider SCRRRA's application.

As Mayor for Town of Montville, I am confident that SCRRRA's project aligns with Connecticut's solid waste diversion and self-sufficiency goals, the State's statutorily established integrated hierarchy of waste management methodologies, the CMMS, and the vision of the Connecticut Coalition for Sustainable Materials Management (CCSMM). The project also aligns with the Connecticut statute for large-scale food waste generators, CGS Section 22a-226e "Recycling of Source Separated Materials", which states that all generators of 26 tons or more of food waste must separate it from other solid waste and recycle it at an authorized composting facility, if one is located within 20 miles of the generator. As of January 1, 2025, the 20-mile stipulation will be dropped, requiring all large-scale generators in Connecticut to recycle their food waste. The SCRRRA compost facility will be a key factor in making the state's vision a reality in the southeastern region of the state.

SCRRRA has been a stalwart provider of solid waste disposal solutions for its twelve-member municipalities in southeastern Connecticut for over 30 years, managing the needs of the region with fiscally responsible and environmentally conscious oversight. The proposed food waste compost facility is a natural addition to the services SCRRRA manages for our communities.

On behalf of my community and the greater region, thank you for considering SCRRRA's proposal.

Sincerely,

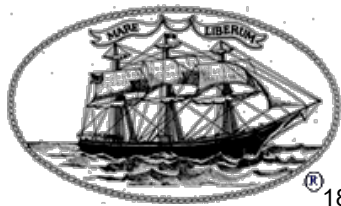
  
Leonard G. Bunnell, Sr., Mayor  
Town of Montville

Cc: David Aldridge, SCRRRA Executive Director

(860) 848-3030 Ext. 778

[www.townofmontville.org](http://www.townofmontville.org)

(860) 848-4534 Fax



## City of New London Office of the Mayor

181 State Street • New London, CT 06320 • Phone (860) 447-5201 • Fax (860) 447-7971

October 15, 2024

Department of Energy and Environmental Protection (DEEP)  
Materials Management Infrastructure Grant Program  
79 Elm Street  
Hartford, CT 06106-5127

Re: Materials Management Infrastructure (MMI) Grant Application

Dear MMI Grant Application Evaluation Team,

It is my pleasure to submit this letter in support of the proposal “Building a Regional Compost Facility for Southeastern Connecticut” submitted by the Southeastern Connecticut Regional Resources Recovery Authority (SCRRRA). SCRRRA’s proposed facility will provide the infrastructure needed to facilitate diversion of food waste from the municipal solid waste (MSW) stream in southeastern Connecticut, reducing MSW tonnage, cost, pollution and reliance on out-of-state disposal options. The facility will provide capacity to help advance the state’s progress toward the 60% diversion rate goal set forth by the state’s Comprehensive Materials Management Strategy (CMMS). It is my hope that the Department will strongly consider SCRRRA’s application.

As Mayor for the City of New London, I am confident that SCRRRA’s project aligns with Connecticut’s solid waste diversion and self-sufficiency goals, the State’s statutorily established integrated hierarchy of waste management methodologies, the CMMS, and the vision of the Connecticut Coalition for Sustainable Materials Management (CCSMM). The project also aligns with the Connecticut statute for large-scale food waste generators, CGS Section 22a-226e “Recycling of Source Separated Materials”, which states that all generators of 26 tons or more of food waste must separate it from other solid waste and recycle it at an authorized composting facility, if one is located within 20 miles of the generator. As of January 1, 2025, the 20-mile stipulation will be dropped, requiring all large-scale generators in Connecticut to recycle their food waste. The SCRRRA compost facility will be a key factor in making the state’s vision a reality in the southeastern region of the state.

SCRRRA has been a stalwart provider of solid waste disposal solutions for its twelve member municipalities in southeastern Connecticut for over 30 years, managing the needs of the region with fiscally responsible and environmentally conscious oversight. The proposed food waste compost facility is a natural addition to the services SCRRRA manages for our communities.

On behalf of my community and the greater region, thank you for considering SCRRRA’s proposal.

Sincerely,

Mayor Michael Passero  
City of New London

Cc: David Aldridge, SCRRRA Executive Director



*Town of*  
***North Stonington, Connecticut***

October 24, 2024

Department of Energy and Environmental Protection (DEEP)  
Materials Management Infrastructure Grant Program  
79 Elm Street  
Hartford, CT 06106-5127

Re: Materials Management Infrastructure (MMI) Grant Application

Dear MMI Grant Application Evaluation Team,

It is my pleasure to submit this letter in support of the proposal "Building a Regional Compost Facility for Southeastern Connecticut" submitted by the Southeastern Connecticut Regional Resources Recovery Authority (SCRARRA). SCRARRA's proposed facility will provide the infrastructure needed to facilitate diversion of food waste from the municipal solid waste (MSW) stream in southeastern Connecticut, reducing MSW tonnage, cost, pollution and reliance on out-of-state disposal options. The facility will provide capacity to help advance the state's progress toward the 60% diversion rate goal set forth by the state's Comprehensive Materials Management Strategy (CMMS). It is my hope that the Department will strongly consider SCRARRA's application.

As the First Selectman for the Town of North Stonington, I am confident that SCRARRA's project aligns with Connecticut's solid waste diversion and self-sufficiency goals, the State's statutorily established integrated hierarchy of waste management methodologies, the CMMS, and the vision of the Connecticut Coalition for Sustainable Materials Management (CCSMM). The project also aligns with the Connecticut statute for large-scale food waste generators, CGS Section 22a-226e "Recycling of Source Separated Materials", which states that all generators of 26 tons or more of food waste must separate it from other solid waste and recycle it at an authorized composting facility, if one is located within 20 miles of the generator. As of January 1, 2025, the 20-mile stipulation will be dropped, requiring all large-scale generators in Connecticut to recycle their food waste. The SCRARRA compost facility will be a key factor in making the state's vision a reality in the southeastern region of the state.

SCRARRA has been a stalwart provider of solid waste disposal solutions for its twelve member municipalities in southeastern Connecticut for over 30 years, managing the needs of the region with fiscally responsible and environmentally conscious oversight. The proposed food waste compost facility is a natural addition to the services SCRARRA manages for our communities.

On behalf of my community and the greater region, thank you for considering SCRARRA's proposal.

Sincerely,



Robert A. Carlson





ESTABLISHED 1659

**CITY OF NORWICH**  
CONNECTICUT

JOHN SALOMONE  
CITY MANAGER  
(860) 823-3750

100 Broadway  
Norwich, CT 06360  
Fax (860) 885-2131

November 4, 2024

Department of Energy and Environmental Protection (DEEP)  
Materials Management Infrastructure Grant Program  
79 Elm Street  
Hartford, CT 06106-5127

Re: Materials Management Infrastructure (MMI) Grant Application

Dear MMI Grant Application Evaluation Team,

It is my pleasure to submit this letter in support of the proposal "Building a Regional Compost Facility for Southeastern Connecticut" submitted by the Southeastern Connecticut Regional Resources Recovery Authority (SCRRRA). SCRRRA's proposed facility will provide the infrastructure needed to facilitate diversion of food waste from the municipal solid waste (MSW) stream in southeastern Connecticut, reducing MSW tonnage, cost, pollution and reliance on out-of-state disposal options. The facility will provide capacity to help advance the state's progress toward the 60% diversion rate goal set forth by the state's Comprehensive Materials Management Strategy (CMMS). It is my hope that the Department will strongly consider SCRRRA's application.

As City Manager for the City of Norwich, I am confident that SCRRRA's project aligns with Connecticut's solid waste diversion and self-sufficiency goals, the State's statutorily established integrated hierarchy of waste management methodologies, the CMMS, and the vision of the Connecticut Coalition for Sustainable Materials Management (CCSMM). The project also aligns with the Connecticut statute for large-scale food waste generators, CGS Section 22a-226e "Recycling of Source Separated Materials", which states that all generators of 26 tons or more of food waste must separate it from other solid waste and recycle it at an authorized composting facility, if one is located within 20 miles of the generator. As of January 1, 2025, the 20-mile stipulation will be dropped, requiring all large-scale generators in Connecticut to recycle their food waste. The SCRRRA compost facility will be a key factor in making the state's vision a reality in the southeastern region of the state.

SCRRRA has been a stalwart provider of solid waste disposal solutions for its twelve member municipalities in southeastern Connecticut for over 30 years, managing the needs of the region with fiscally responsible and environmentally conscious oversight. The proposed food waste compost facility is a natural addition to the services SCRRRA manages for our communities.

On behalf of my community and the greater region, thank you for considering SCRRRA's proposal.

Sincerely,

John Salomone  
City Manager

Cc: David Aldridge, SCRRRA Executive Director



TOWN OF PRESTON  
389 Route 2  
Preston, Connecticut 06365  
860-887-5581

October 15, 2024

Department of Energy and Environmental Protection (DEEP)  
Materials Management Infrastructure Grant Program  
79 Elm Street  
Hartford, CT 06106-5127

**Re: Materials Management Infrastructure (MMI) Grant Application**

Dear MMI Grant Application Evaluation Team,

It is my pleasure to submit this letter in support of the proposal "Building a Regional Compost Facility for Southeastern Connecticut" submitted by the Southeastern Connecticut Regional Resources Recovery Authority (SCRRRA). SCRRRA's proposed facility will provide the infrastructure needed to facilitate diversion of food waste from the municipal solid waste (MSW) stream in southeastern Connecticut, reducing MSW tonnage, cost, pollution and reliance on out-of-state disposal options. The facility will provide capacity to help advance the state's progress toward the 60% diversion rate goal set forth by the state's Comprehensive Materials Management Strategy (CMMS). It is my hope that the Department will strongly consider SCRRRA's application.

As First Selectwoman for the Town of Preston, I am confident that SCRRRA's project aligns with Connecticut's solid waste diversion and self-sufficiency goals, the State's statutorily established integrated hierarchy of waste management methodologies, the CMMS, and the vision of the Connecticut Coalition for Sustainable Materials Management (CCSMM). The project also aligns with the Connecticut statute for large-scale food waste generators, CGS Section 22a-226e "Recycling of Source Separated Materials", which states that all generators of 26 tons or more of food waste must separate it from other solid waste and recycle it at an authorized composting facility, if one is located within 20 miles of the generator. As of January 1, 2025, the 20-mile stipulation will be dropped, requiring all large-scale generators in Connecticut to recycle their food waste. The SCRRRA compost facility will be a key factor in making the state's vision a reality in the southeastern region of the state.

SCRRRA has been a stalwart provider of solid waste disposal solutions for its twelve member municipalities in southeastern Connecticut for over 30 years, managing the needs of the region with fiscally responsible and environmentally conscious oversight. The proposed food waste compost facility is a natural addition to the services SCRRRA manages for our communities.

On behalf of my community and the greater region, thank you for considering SCRRRA's proposal.

Sincerely,

Sandra Allyn-Gauthier  
First Selectwoman

Copy: David Aldridge, SCRRRA Executive Director





# Town of Sprague

Cheryl A. Blanchard  
*First Selectman*

October 16, 2024

Department of Energy and Environmental Protection (DEEP)  
Materials Management Infrastructure Grant Program  
79 Elm Street  
Hartford, CT 06106-5127

Re: Materials Management Infrastructure (MMI) Grant Application

Dear MMI Grant Application Evaluation Team,

It is my pleasure to submit this letter in support of the proposal "Building a Regional Compost Facility for Southeastern Connecticut" submitted by the Southeastern Connecticut Regional Resources Recovery Authority (SCRRRA). SCRRRA's proposed facility will provide the infrastructure needed to facilitate diversion of food waste from the municipal solid waste (MSW) stream in southeastern Connecticut, reducing MSW tonnage, cost, pollution and reliance on out-of-state disposal options. The facility will provide capacity to help advance the state's progress toward the 60% diversion rate goal set forth by the state's Comprehensive Materials Management Strategy (CMMS). It is my hope that the Department will strongly consider SCRRRA's application.

As First Selectman for Sprague, I am confident that SCRRRA's project aligns with Connecticut's solid waste diversion and self-sufficiency goals, the State's statutorily established integrated hierarchy of waste management methodologies, the CMMS, and the vision of the Connecticut Coalition for Sustainable Materials Management (CCSMM). The project also aligns with the Connecticut statute for large-scale food waste generators, CGS Section 22a-226e "Recycling of Source Separated Materials", which states that all generators of 26 tons or more of food waste must separate it from other solid waste and recycle it at an authorized composting facility, if one is located within 20 miles of the generator. As of January 1, 2025, the 20-mile stipulation will be dropped, requiring all large-scale generators in Connecticut to recycle their food waste. The SCRRRA compost facility will be a key factor in making the state's vision a reality in the southeastern region of the state.

SCRRRA has been a stalwart provider of solid waste disposal solutions for its twelve member municipalities in southeastern Connecticut for over 30 years, managing the needs of the region with fiscally responsible and environmentally conscious oversight. The proposed food waste compost facility is a natural addition to the services SCRRRA manages for our communities.

On behalf of my community and the greater region, thank you for considering SCRRRA's proposal.

Sincerely,

Cc: David Aldridge, SCRRRA Executive Director



# TOWN OF STONINGTON

SOLID WASTE & RECYCLING DEPARTMENT

152 Elm Street • Stonington, Connecticut 06378-0352

Tel: 860 535-5099 Fax: 860 535-9261

October 24, 2024

Department of Energy and Environmental Protection (DEEP)  
Materials Management Infrastructure Grant Program  
79 Elm Street  
Hartford, CT 06106-5127

Re: Materials Management Infrastructure (MMI) Grant Application

Dear MMI Grant Application Evaluation Team,

It is my pleasure to submit this letter in support of the proposal "Building a Regional Compost Facility for Southeastern Connecticut" submitted by the Southeastern Connecticut Regional Resources Recovery Authority (SCRRA). SCRRA's proposed facility will provide the infrastructure needed to facilitate diversion of food waste from the municipal solid waste (MSW) stream in southeastern Connecticut, reducing MSW tonnage, cost, pollution and reliance on out-of-state disposal options. The facility will provide capacity to help advance the state's progress toward the 60% diversion rate goal set forth by the state's Comprehensive Materials Management Strategy (CMMS). It is my hope that the Department will strongly consider SCRRA's application.

As First Selectman for the Town of Stonington, I am confident that SCRRA's project aligns with Connecticut's solid waste diversion and self-sufficiency goals, the State's statutorily established integrated hierarchy of waste management methodologies, the CMMS, and the vision of the Connecticut Coalition for Sustainable Materials Management (CCSMM). The project also aligns with the Connecticut statute for large-scale food waste generators, CGS Section 22a-226e "Recycling of Source Separated Materials", which states that all generators of 26 tons or more of food waste must separate it from other solid waste and recycle it at an authorized composting facility, if one is located within 20 miles of the generator. As of January 1, 2025, the 20-mile stipulation will be dropped, requiring all large-scale generators in Connecticut to recycle their food waste. The SCRRA compost facility will be a key factor in making the state's vision a reality in the southeastern region of the state.

SCRRA has been a stalwart provider of solid waste disposal solutions for its twelve member municipalities in southeastern Connecticut for over 30 years, managing the needs of the region with fiscally responsible and environmentally conscious oversight. The proposed food waste compost facility is a natural addition to the services SCRRA manages for our communities.

On behalf of my community and the greater region, thank you for considering SCRRRA's proposal.

Sincerely,

A handwritten signature in blue ink, appearing to read 'D. Chesebrough', with a stylized flourish at the end.

Danielle Chesebrough

First Selectman

Town of Stonington

152 Elm Street

Stonington, CT 06378

(860) 535-5050

[dchesebrough@stonington-ct.gov](mailto:dchesebrough@stonington-ct.gov)

Cc: David Aldridge, SCRRRA Executive Director



FIFTEEN ROPE FERRY ROAD  
WATERFORD, CT 06385-2886



PHONE: 860-442-0553  
[www.waterfordct.org](http://www.waterfordct.org)

November 1, 2024

Department of Energy and Environmental Protection (DEEP)  
Materials Management Infrastructure Grant Program  
79 Elm Street  
Hartford, CT 06106-5127

Re: Materials Management Infrastructure (MMI) Grant Application

Dear MMI Grant Application Evaluation Team,

It is my pleasure to submit this letter on behalf of the town of Waterford in support of the proposal "Building a Regional Compost Facility for Southeastern Connecticut" submitted by the Southeastern Connecticut Regional Resources Recovery Authority (SCRRRA). SCRRRA's proposed facility will provide the infrastructure needed to facilitate diversion of food waste from the municipal solid waste (MSW) stream in southeastern Connecticut, reducing MSW tonnage, cost, pollution and reliance on out-of-state disposal options. The facility will provide capacity to help advance the state's progress toward the 60% diversion rate goal set forth by the state's Comprehensive Materials Management Strategy (CMMS). It is my hope that the Department will strongly consider SCRRRA's application.

As First Selectman for Waterford, I am confident that SCRRRA's project aligns with Connecticut's solid waste diversion and self-sufficiency goals, the State's statutorily established integrated hierarchy of waste management methodologies, the CMMS, and the vision of the Connecticut Coalition for Sustainable Materials Management (CCSMM). The project also aligns with the Connecticut statute for large-scale food waste generators, CGS Section 22a-226e "Recycling of Source Separated Materials", which states that all generators of 26 tons or more of food waste must separate it from other solid waste and recycle it at an authorized composting facility, if one is located within 20 miles of the generator. As of January 1, 2025, the 20-mile stipulation will be dropped, requiring all large-scale generators in Connecticut to recycle their food waste. The SCRRRA compost facility will be a key factor in making the state's vision a reality in the southeastern region of the state.

SCRRRA has been a stalwart provider of solid waste disposal solutions for Waterford and its other eleven member municipalities in southeastern Connecticut for over 30 years, managing the recycling needs of the region with fiscally responsible and environmentally conscious oversight and innovation. The proposed food waste compost facility is a natural addition to the diverse cost effective services SCRRRA manages for our communities.

On behalf of Waterford and the greater region, thank you for considering SCRRRA's proposal.

Sincerely,

Robert J. Brule  
Waterford First Selectman

Cc: David Aldridge, SCRRRA Executive Director

November 5, 2024

Department of Energy and Environmental Protection (DEEP)  
Materials Management Infrastructure Grant Program  
79 Elm Street  
Hartford, CT 06106-5127

Re: Materials Management Infrastructure (MMI) Grant Application

Dear MMI Grant Application Evaluation Team,

The Town of Groton Conservation Commission is submitting this letter in support of the proposal “Building a Regional Compost Facility for Southeastern Connecticut” submitted by the Southeastern Connecticut Regional Resources Recovery Authority (SCRRRA). SCRRRA’s proposed facility will provide the regional infrastructure needed to facilitate diversion of food waste from the municipal solid waste (MSW) stream in southeastern Connecticut, reducing MSW tonnage, cost, pollution and reliance on out-of-state disposal options.

The facility will provide the capacity to help advance the state’s progress toward the 60% diversion rate goal set forth by the state’s Comprehensive Materials Management Strategy (CMMS). It is my hope that the Department will approve SCRRRA’s application.

As Chair of Conservation Commission for the Town of Groton, we have worked with David Aldridge and have supporting this effort from the beginning. I am confident that SCRRRA’s project aligns with Connecticut’s solid waste diversion and self-sufficiency goals, the State’s statutorily established integrated hierarchy of waste management methodologies, the CMMS, and the vision of the Connecticut Coalition for Sustainable Materials Management (CCSMM).

The project also aligns with the Connecticut statute for large-scale food waste generators, CGS Section 22a-226e “Recycling of Source Separated Materials”, which states that all generators of 26 tons or more of food waste must separate it from other solid waste and recycle it at an authorized composting facility, if one is located within 20 miles of the generator. As of January 1, 2025, the 20-mile stipulation will be dropped, requiring all large-scale generators in Connecticut to recycle their food waste. The SCRRRA compost facility will be a key factor in making the state’s vision a reality in the southeastern region of the state.

The Town of Groton has been a leader in reducing solid waste in our municipality. We enacted plastics reduction ordinance and promoted recycling efforts which has resulted in a reduction of 7% in waste tonnage from 2019 thru 2023.

SCRRRA has been a stalwart provider of solid waste disposal solutions for its twelve member municipalities in southeastern Connecticut for over 30 years, managing the needs of the region with fiscally responsible and environmentally conscious oversight. The proposed food waste compost facility is a natural addition to the services SCRRRA manages for our communities.

On behalf of my community and the greater region, thank you for considering SCRRRA's proposal.

Sincerely,

Larry Dunn  
Chair, Groton Ct Conservation Commission

Cc: David Aldridge, SCRRRA Executive Director

**SENATOR MARTHA MARX**

DEPUTY MAJORITY LEADER

Legislative Office Building

Room 2200

Hartford, CT 06106-1591

Tel. 860-240-0436

Martha.Marx@cga.ct.gov



**State of Connecticut**

**SENATE**

*Twentieth District*

**Chair**  
Veterans' Affairs Committee

**Vice Chair**  
Public Health Committee

**Member**  
Aging Committee  
Appropriations Committee  
Government Administration  
& Elections Committee  
Insurance & Real Estate Committee

October 22, 2024

Department of Energy and Environmental Protection (DEEP)  
Materials Management Infrastructure Grant Program  
79 Elm Street  
Hartford, CT 06106-5127

Re: Materials Management Infrastructure (MMI) Grant Application

Dear MMI Grant Application Evaluation Team,

It is my pleasure to submit this letter in support of the proposal "Building a Regional Compost Facility for Southeastern Connecticut" submitted by the Southeastern Connecticut Regional Resources Recovery Authority (SCRRRA). SCRRRA's proposed facility will provide the infrastructure needed to facilitate diversion of food waste from the municipal solid waste (MSW) stream in southeastern Connecticut, reducing MSW tonnage, cost, pollution and reliance on out-of-state disposal options. The facility will provide capacity to help advance the state's progress toward the 60% diversion rate goal set forth by the state's Comprehensive Materials Management Strategy (CMMS). It is my hope that the Department will strongly consider SCRRRA's application.

As State Senator for the 20<sup>th</sup> Senate District, I am confident that SCRRRA's project aligns with Connecticut's solid waste diversion and self-sufficiency goals, the State's statutorily established integrated hierarchy of waste management methodologies, the CMMS, and the vision of the Connecticut Coalition for Sustainable Materials Management (CCSMM). The project also aligns with the Connecticut statute for large-scale food waste generators, CGS Section 22a-226e "Recycling of Source Separated Materials", which states that all generators of 26 tons or more of food waste must separate it from other solid waste and recycle it at an authorized composting facility, if one is located within 20 miles of the generator. As of January 1, 2025, the 20-mile stipulation will be dropped, requiring all large-scale generators in Connecticut to recycle their food waste. The SCRRRA compost facility will be a key factor in making the state's vision a reality in the southeastern region of the state.

SCRRRA has been a stalwart provider of solid waste disposal solutions for its twelve member municipalities in southeastern Connecticut for over 30 years, managing the needs of the region with fiscally responsible and environmentally conscious oversight. The proposed food waste compost facility is a natural addition to the services SCRRRA manages for our communities.

On behalf of my community and the greater region, thank you for considering SCRRRA's proposal.

Sincerely,

A handwritten signature in blue ink that reads "Martha Marx".

Martha Marx, RN, BSN  
State Senator, 20<sup>th</sup> District

SENATOR CATHY OSTEN  
Nineteenth District  
  
Legislative Office Building  
Room 2700  
Hartford, CT 06106-1591  
Tel. 860-240-0579  
Toll-free 1-800-842-1420  
[www.senatedems.ct.gov/Osten](http://www.senatedems.ct.gov/Osten)



Chair  
Appropriations Committee  
Vice Chair  
Labor & Public Employees Committee  
Public Safety & Security Committee  
Member  
Legislative Management Committee  
Regulation Review Committee  
Transportation Committee  
Veterans' Affairs Committee

December 3, 2024

Department of Energy and Environmental Protection (DEEP)  
Materials Management Infrastructure Grant Program  
79 Elm Street  
Hartford, CT 06106-5127

Re: Materials Management Infrastructure (MMI) Grant Application

Dear MMI Grant Application Evaluation Team,

It is my pleasure to submit this letter in support of the proposal "Building a Regional Compost Facility for Southeastern Connecticut" submitted by the Southeastern Connecticut Regional Resources Recovery Authority (SCRARRA). SCRARRA's proposed facility will provide the infrastructure needed to facilitate diversion of food waste from the municipal solid waste (MSW) stream in southeastern Connecticut, reducing MSW tonnage, cost, pollution and reliance on out-of-state disposal options. The facility will provide capacity to help advance the state's progress toward the 60% diversion rate goal set forth by the state's Comprehensive Materials Management Strategy (CMMS). It is my hope that the Department will strongly consider SCRARRA's application.

As State Senator for the 19<sup>th</sup> district, I am confident that SCRARRA's project aligns with Connecticut's solid waste diversion and self-sufficiency goals, the State's statutorily established integrated hierarchy of waste management methodologies, the CMMS, and the vision of the Connecticut Coalition for Sustainable Materials Management (CCSMM). The project also aligns with the Connecticut statute for large-scale food waste generators, CGS Section 22a-226e "Recycling of Source Separated Materials", which states that all generators of 26 tons or more of food waste must separate it from other solid waste and recycle it at an authorized composting facility, if one is located within 20 miles of the generator. As of January 1, 2025, the 20-mile stipulation will be dropped, requiring all large-scale generators in Connecticut to recycle their food waste. The SCRARRA compost facility will be a key factor in making the state's vision a reality in the southeastern region of the state.

SCRARRA has been a stalwart provider of solid waste disposal solutions for its twelve member municipalities in southeastern Connecticut for over 30 years, managing the needs of the region with

fiscally responsible and environmentally conscious oversight. The proposed food waste compost facility is a natural addition to the services SCRRRA manages for our communities.

On behalf of my community and the greater region, thank you for considering SCRRRA's proposal.

Sincerely,

A handwritten signature in blue ink, appearing to read "Catherine A. Osten", with a stylized flourish at the end.

Cathy Osten  
State Senator, 19<sup>th</sup> District

Cc: David Aldridge, SCRRRA Executive Director





**State of Connecticut  
HOUSE OF REPRESENTATIVES**

STATE CAPITOL  
HARTFORD, CONNECTICUT 06106-1591

**Representative Aundré Bumgardner**  
FORTY FIRST ASSEMBLY DISTRICT

LEGISLATIVE OFFICE BUILDING  
ROOM 1001

CAPITOL: (860) 240-8585

TOLL FREE: (800) 842-8267

FAX: (860) 240-0206

E-MAIL: Aundré Bumgardner@caa.ct.gov

**ASSISTANT  
MAJORITY LEADER**

**SECRETARY**  
BLACK AND PUERTO RICAN CAUCUS

**MEMBER**  
ENVIRONMENT  
FINANCE, REVENUE AND BONDING  
PLANNING AND DEVELOPMENT

November 13, 2024

Department of Energy and Environmental Protection (DEEP)  
79 Elm Street  
Hartford, CT 06106-5127

Dear MMI Grant Application Evaluation Team,

I am pleased to support the proposal "Building a Regional Compost Facility for Southeastern Connecticut," submitted by the Southeastern Connecticut Regional Resources Recovery Authority (SCRRRA). This facility will provide critical infrastructure to divert food waste from the municipal solid waste (MSW) stream, reducing costs, pollution, and reliance on out-of-state disposal while advancing the state's 60% diversion rate goal in the Comprehensive Materials Management Strategy (CMMS).

As State Representative for Groton and Stonington, I am confident this project aligns with Connecticut's solid waste goals and mandates, including CGS Section 22a-226e, which will soon require large-scale generators to recycle food waste. The SCRRRA facility is vital to achieving these objectives.

Key progress has been made. In January 2024, the Town of Preston approved the site plan, and SCRRRA secured a \$400,000 USDA grant toward the \$2 million construction cost. Located on Route 12 in Preston, the facility will accept food waste from homes, businesses, schools, and non-profits, with potential for regional expansion.

Stonington's efforts highlight the importance of this facility. A pilot compost heap at the transfer station demonstrated the feasibility of producing high-quality compost by combining food waste with wood chips in a controlled environment. Building on this, Stonington launched a curbside composting program through the DEEP Sustainable Materials Management Grant, hauling collected scraps to an anaerobic digester over an hour away. Over 47 weeks, this program achieved a 53% clean capture rate, diverted 483,000 pounds of organic material, reduced waste by 10%, and increased recycling and food scrap rates by 6%.

Stonington's success underscores the need for regional composting infrastructure. SCRRRA's facility will enable municipalities to expand programs, reduce waste, and promote sustainability. With over 30 years of experience, SCRRRA's leadership ensures this project's success.

Given its shovel-readiness and environmental benefits, I strongly urge the Department of Energy and Environmental Protection to approve SCRRRA's Materials Management Infrastructure Application. Thank you for considering this transformational project.

Sincerely,

Aundré Bumgardner  
State Representative, 41st District  
Groton and Stonington

Cc: David Aldridge, SCRRRA Executive Director



## State of Connecticut

### HOUSE OF REPRESENTATIVES STATE CAPITOL

**REPRESENTATIVE BRIAN LANOUE**  
FORTY-FIFTH ASSEMBLY DISTRICT

LEGISLATIVE OFFICE BUILDING, ROOM 4200  
300 CAPITOL AVENUE  
HARTFORD, CT 06106-1591

CAPITOL: (860) 240-8700  
TOLL FREE: (800) 842-1423  
Brian.Lanoue@cga.ct.gov

**MEMBER**  
COMMITTEE ON CHILDREN  
HIGHER EDUCATION AND EMPLOYMENT  
ADVANCEMENT COMMITTEE  
VETERANS' AFFAIRS COMMITTEE

November 22, 2024

Department of Energy and Environmental Protection  
Materials Management Infrastructure Grant Program  
79 Elm Street  
Hartford, CT 06106-5127

#### **Re: Materials Management Infrastructure (MMI) Grant Application**

Dear MMI Grant Application Evaluation Team,

It is my pleasure to submit this letter in support of the proposal "Building a Regional Compost Facility for Southeastern Connecticut" submitted by the Southeastern Connecticut Regional Resources Recovery Authority (SCRRA). SCRRA's proposed facility will provide the infrastructure needed to facilitate diversion of food waste from the municipal solid waste (MSW) stream in southeastern Connecticut, reducing MSW tonnage, cost, pollution, and reliance on out-of-state disposal options. The facility will provide capacity to help advance the state's progress toward the 60% diversion rate goal set forth by the state's Comprehensive Materials Management Strategy (CMMS). It is my hope that the Department will strongly consider SCRRA's application.

I am confident that SCRRA's project aligns with Connecticut's solid waste diversion and self-sufficiency goals, the State's statutorily established integrated hierarchy of waste management methodologies, the CMMS, and the vision of the Connecticut Coalition for Sustainable Materials Management (CCSMM). The project also aligns with the Connecticut statute for large-scale food waste generators, CGS Section 22a-226e "Recycling of Source Separated Materials", which states that all generators of 26 tons or more of food waste must separate it from other solid waste and recycle it at an authorized composting facility if one is located within 20 miles of the generator. As of January 1, 2025, the 20-mile stipulation will be dropped, requiring all large-scale generators in Connecticut to recycle their food waste. The SCRRA compost facility will be a key factor in making the state's vision a reality in the southeastern region of the state.

Page Two

November 22, 2024

Re: Materials Management Infrastructure (MMI) Grant Application

SCRRRA has been a stalwart provider of solid waste disposal solutions for its twelve member municipalities in southeastern Connecticut for over 30 years, managing the needs of the region with fiscally responsible and environmentally conscious oversight. The proposed food waste compost facility is a natural addition to the services SCRRRA manages for our communities.

On behalf of my community and the greater region, thank you for considering SCRRRA's proposal.

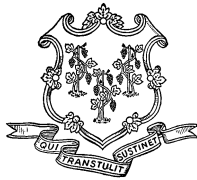
Sincerely,

A handwritten signature in black ink, reading "Brian I. Lanoue". The signature is written in a cursive, flowing style.

Brian Lanoue

State Representative, 45th District

cc: David Aldridge, SCRRRA Executive Director



**State of Connecticut**  
**HOUSE OF REPRESENTATIVES**  
STATE CAPITOL  
HARTFORD, CONNECTICUT 06106-1591

**REPRESENTATIVE CHRISTINE CONLEY**  
FORTIETH ASSEMBLY DISTRICT

LEGISLATIVE OFFICE BUILDING, ROOM 4036  
HARTFORD, CT 06106-1591  
OFFICE: 860-240-8585  
E-MAIL: Christine.Conley@cga.ct.gov

**MEMBER**

JUDICIARY COMMITTEE  
PLANNING AND DEVELOPMENT COMMITTEE  
TRANSPORTATION COMMITTEE

December 4, 2024

Department of Energy and Environmental Protection (DEEP)  
Materials Management Infrastructure Grant Program  
79 Elm Street, Hartford, CT 06106-5127

Re: Materials Management Infrastructure (MMI) Grant Application

Dear MMI Grant Application Evaluation Team,

It is my pleasure to submit this letter in support of the proposal submitted by the Southeastern Connecticut Regional Resources Recovery Authority (SCRRRA) entitled, "Building a Regional Compost Facility for Southeastern Connecticut". SCRRRA's proposed facility will provide the infrastructure needed to facilitate diversion of food waste from the municipal solid waste (MSW) stream in southeastern Connecticut, reducing MSW tonnage, cost, pollution, and reliance on out-of-state disposal options. The facility will provide capacity to advance the state's progress toward the 60% diversion rate goal set forth by the state's Comprehensive Materials Management Strategy (CMMS). I hope the Department will strongly consider SCRRRA's application.

As the State Representative for New London and Groton, I am confident that SCRRRA's project aligns with Connecticut's solid waste diversion and self-sufficiency goals, the State's statutorily established integrated hierarchy of waste management methodologies, the CMMS, and the vision of the Connecticut Coalition for Sustainable Materials Management (CCSMM). The project also aligns with the Connecticut statute for large-scale food waste generators, CGS Section 22a-226e "Recycling of Source Separated Materials", which states that all generators of 26 tons or more of food waste must separate it from other solid waste and recycle it at an authorized composting facility, if one is located within 20 miles of the generator. As of January 1, 2025, the 20-mile stipulation will be dropped, requiring all large-scale generators in Connecticut to recycle their food waste. The SCRRRA compost facility will be a key factor in making the state's vision a reality in the southeastern region of the state.

SCRRRA has been a stalwart provider of solid waste disposal solutions for its twelve member municipalities in southeastern Connecticut for over 30 years, managing the needs of the region with fiscally responsible and environmentally conscious oversight. The proposed food waste compost facility is a natural addition to the services SCRRRA manages for our communities. On behalf of my community and the greater region, thank you for considering SCRRRA's proposal.

Sincerely,

A handwritten signature in black ink, appearing to read "Christine Conley", written over a horizontal line.

Representative Christine Conley  
40<sup>th</sup> Assembly District

Cc: David Aldridge, SCRRRA Executive Director



## State of Connecticut

### HOUSE OF REPRESENTATIVES STATE CAPITOL

**REPRESENTATIVE GREGORY S. HOWARD**  
FORTY-THIRD ASSEMBLY DISTRICT

LEGISLATIVE OFFICE BUILDING, ROOM 4200  
300 CAPITOL AVENUE  
HARTFORD, CT 06106-1591

TOLL FREE: (800) 842-1423  
CAPITOL: (860) 240-8700  
Greg.Howard@housegop.ct.gov

**RANKING MEMBER**  
PUBLIC SAFETY AND SECURITY COMMITTEE

**MEMBER**  
EDUCATION COMMITTEE  
JUDICIARY COMMITTEE

November 25, 2024

Department of Energy and Environmental Protection (DEEP)  
Materials Management Infrastructure Grant Program  
79 Elm Street  
Hartford, CT 06106-5127

Re: Materials Management Infrastructure (MMI) Grant Application

Dear MMI Grant Application Evaluation Team,

I am happy to submit this letter in support of the proposal "Building a Regional Compost Facility for Southeastern Connecticut" submitted by the Southeastern Connecticut Regional Resources Recovery Authority (SCRRRA). SCRRRA's proposed facility will provide the infrastructure needed to facilitate diversion of food waste from the municipal solid waste (MSW) stream in southeastern Connecticut, reducing MSW tonnage, cost, pollution and reliance on out-of-state disposal options. The facility will provide capacity to help advance the state's progress toward the 60% diversion rate goal set forth by the state's Comprehensive Materials Management Strategy (CMMS). It is my hope that the Department will strongly consider SCRRRA's application.

SCRRRA's project aligns with Connecticut's solid waste diversion and self-sufficiency goals, the State's statutorily established integrated hierarchy of waste management methodologies, the CMMS, and the vision of the Connecticut Coalition for Sustainable Materials Management (CCSMM). The project also aligns with the Connecticut statute for large-scale food waste generators, CGS Section 22a-226e "Recycling of Source Separated Materials", which states that all generators of 26 tons or more of food waste must separate it from other solid waste and recycle it at an authorized composting facility, if one is located within 20 miles of the generator. As of January 1, 2025, the 20-mile stipulation will be dropped, requiring all large-scale generators in Connecticut to recycle their food waste. The SCRRRA compost facility will be a key factor in making the state's vision a reality in the southeastern region of the state.

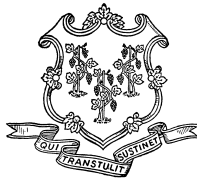
On behalf of my community, thank you for considering SCRRRA's proposal.

Sincerely,



A handwritten signature in black ink, appearing to read "G. Howard", written in a cursive style.

Greg Howard, 43<sup>rd</sup> District



**State of Connecticut**  
**HOUSE OF REPRESENTATIVES**  
STATE CAPITOL  
HARTFORD, CONNECTICUT 06106-1591

**REPRESENTATIVE DERELL WILSON**  
46<sup>TH</sup> ASSEMBLY DISTRICT

LEGISLATIVE OFFICE BUILDING, ROOM 3802  
CAPITOL: (860) 240-8585  
TOLL FREE: (800) 842-8267  
FAX: (860) 240-0206  
E-MAIL: Derell.wilson@cga.ct.gov

**VICE CHAIR**  
LABOR & PUBLIC EMPLOYEES COMMITTEE  
**MEMBER**  
JUDICIARY COMMITTEE  
**MEMBER**  
FINANCE REVENUE & BONDING COMMITTEE

December 20, 2024

The Hon. Katie Dykes  
Commissioner, State of Connecticut  
Department of Energy and Environmental Protection (DEEP)  
79 Elm Street  
Hartford, CT 06106

**RE: Support Letter for Southeastern CT Regional Resources Recovery Authority's Application for the Materials Management Infrastructure (MMI) Grant**

Dear Commissioner Dykes,

I am writing to express my strong support for the Southeastern Connecticut Regional Resources Recovery Authority (SCRRA) and their application for the Materials Management Infrastructure (MMI) Grant to help fund the construction of a regional compost facility in Preston.

This facility, designed to divert food waste from disposal, is a crucial step in advancing sustainable waste management practices throughout our region. Not only will it convert food waste into a nutrient-rich soil amendment that will support local farms, municipalities, and residents, but it will also significantly reduce our environmental impact by sequestering carbon and decreasing greenhouse gas emissions. The economic benefits of this project are equally substantial, as it will reduce solid waste management costs for our communities and create new opportunities for job growth and economic development.

The compost facility has already secured a zoning permit, and we are optimistic that the necessary operating permit from DEEP will be approved in the first quarter of 2025. Furthermore, SCRRA has made impressive strides in securing funding for this initiative, including a USDA grant for equipment. The additional support from the MMI Grant will be essential to covering the estimated \$4.5 million construction cost of the facility.

The success of this project is driven by strong regional support, as evidenced by the letters we have received from all 12 SCRRA town CEOs and numerous state representatives. This facility is seen as a vital resource for our communities, and I am proud to lend my endorsement to this endeavor.

Given the significant environmental, economic, and community benefits this facility will provide, I wholeheartedly encourage you to support SCRRRA's application for the MMI Grant. The impact of this project will be felt across our region, promoting sustainability, fostering collaboration, and advancing the state's broader environmental goals.

Thank you for your consideration, and please feel free to reach out if you need further information.

Sincerely,

A handwritten signature in black ink, appearing to read "Derell Wilson". The signature is fluid and cursive, with the first name "Derell" and last name "Wilson" clearly distinguishable.

Representative Derell Wilson

46th District