

CEEJAC

WATER SUBCOMMITTEE

Chair: Cierra Patrick, City of Groton
April 23, 2024





URBAN WATERS INITIATIVE

Abbie Winter, CT DEEP
Mónica Garcia, Save the Sound
Anthony Allen, Save the Sound
COMMUNITY ENGAGEMENT TO RESTORE THE MILL RIVER WATERSHED

MILL RIVER WATERSHED

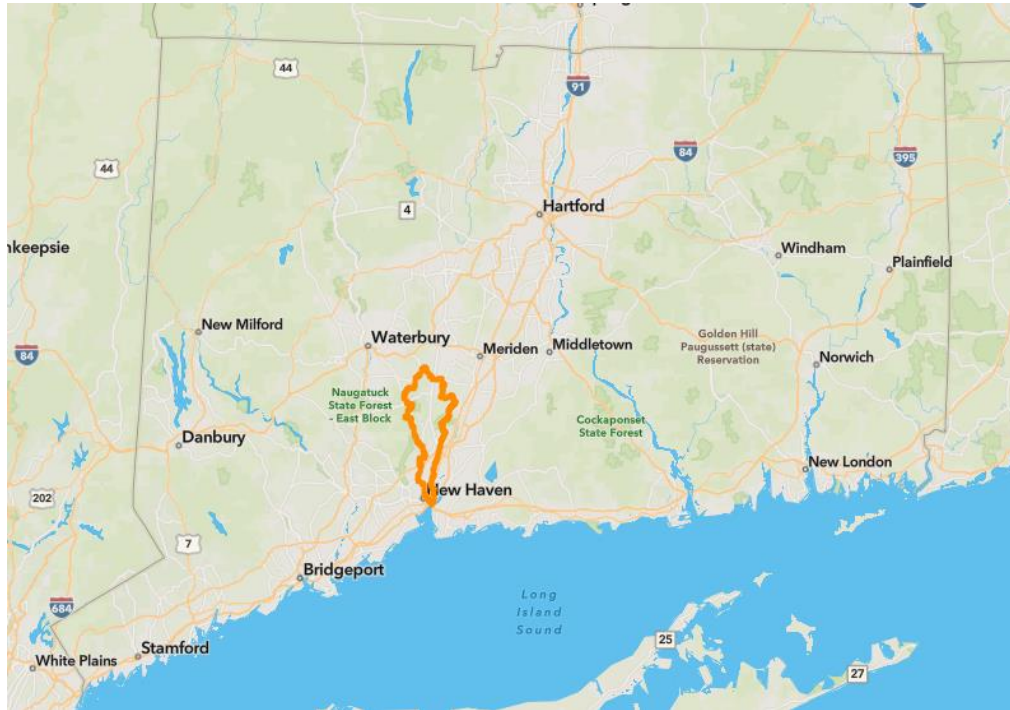


Table 2-1. Distribution of Municipalities in the Mill River Watershed

Municipality	Total Acreage of Municipality	Acreage in Watershed	% of Municipality in Watershed	% of Watershed	Population Density (people/sq.mi.)
Bethany	13,690	128	0.9	0.5	262
Cheshire	21,165	7,377	34.9	30.0	885
Hamden	21,278	13,117	61.6	53.4	1,884
New Haven	12,288	1,179	9.6	4.8	6,992
North Haven	13,510	835	6.2	3.4	1,149
Prospect	9,238	799	8.7	3.3	680
Wallingford	25,821	1,149	4.5	4.7	1,155
Watershed (total)	116,990	24,585	N/A	100.0	1,723

Inspiration: Partnerships in the Bronx River

- Started with a small federal investment in 1997
- Now:
 - 20,000+ volunteers
 - \$1 million+ raised
 - Greenway Development
 - River data collection program



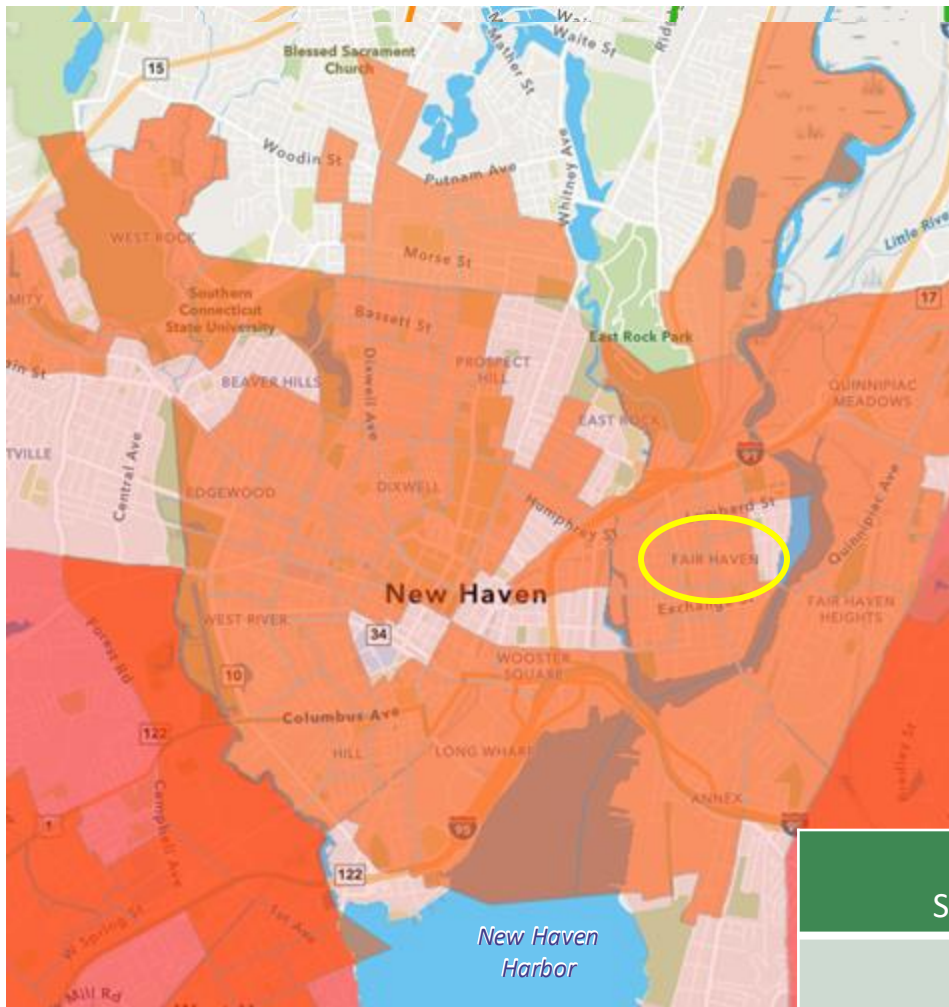
Selecting the Mill River

- Similarities to the Bronx River
- Need for increased capacity
- Robust existing partnerships



Starting the UWI

- \$100,000 EPA Grant
- Steering Committee:
 - Chairperson
 - 2 DEEP staff
 - Mill River Watershed Association
- Soliciting applications



Legend

CT Towns



Environmental Justice Block Groups 2023



Environmental Justice Distressed Municipalities 2023

Distressed Municipality

Municipality within 5-year Grace Period

Environmental Justice Communities Section 22a-20a of the Connecticut General Statutes

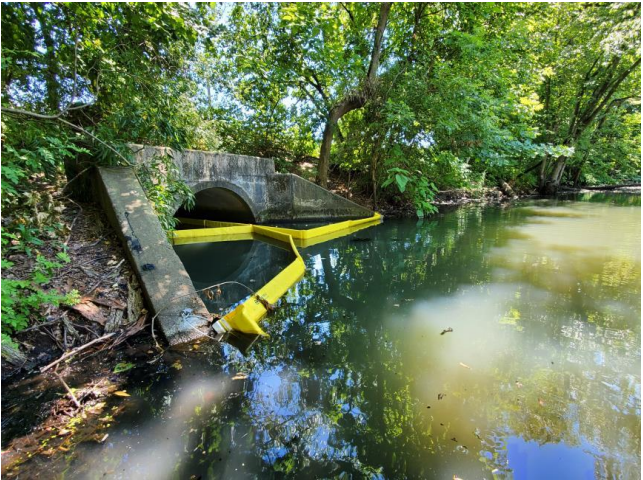
	New Haven	Fair Haven
Minority population	70.9%	76.9%-97.8%
Limited English Proficiency	8.6%	4.5%-52.8%
Below the 200% Federal Poverty Level	20.8%	32%-79.2%

PHASE 1 OVERVIEW

	Community Science	Community Outreach, Engagement, and Leadership
Partner:	Southwest Conservation District (SWCD)	Save the Sound, Inc.
Award:	\$57,218	\$39,848
Components:	<ul style="list-style-type: none">• Supporting Sound School Students• Water Quality Lab• Floatable Trash Analysis	<ol style="list-style-type: none">1) Community Leaders2) PhotoVoice Method3) Project proposals

COMMUNITY SCIENCE

- 1. Support Sound School Students - water quality monitoring and education
- 2. Setup bacteria analysis lab for samples in watershed
- 3. Deploy booms for floatable trash collection and analysis



PHASE 1 OVERVIEW

	Community Science	Community Outreach, Engagement, and Leadership
Partner:	Southwest Conservation District (SWCD)	Save the Sound, Inc.
Award:	\$57,218	\$39,848
Components:	<ul style="list-style-type: none">• Supporting Sound School Students• Water Quality Lab• Floatable Trash Analysis	<ol style="list-style-type: none">1) Community Leaders2) PhotoVoice Method3) Project proposals

MOVING FORWARD: PHASE 2

Phase 2 is in progress

- CWA Section 604(b) funding: \$113,959
- Project Partners
 - Southwest Conservation District
 - Save the Sound
- Phase 2 includes
 - Further supporting the Water Quality Lab
 - Offering training and education to the Fair Haven community
 - Further developing solutions from Phase I
 - Continued work with the Sound School



THANK YOU TO OUR PARTNERS



Save the Sound®



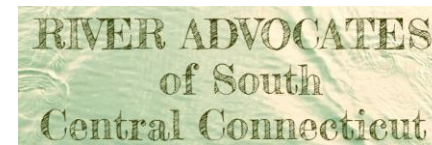
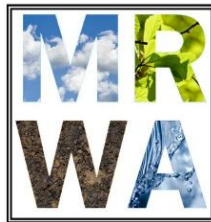
Urban Resources Initiative
New Haven, Connecticut



CONNECTICUT
Conservation Districts



NEW HAVEN FREE PUBLIC LIBRARY





QUESTIONS/CONTACT

Abbie Winter
Abigail.Winter@ct.gov

Anthony Allen
aallen@savethesound.org



THE FUTURE OF THE MILL RIVER
IN FAIR HAVEN
EL FUTURO DEL RÍO MILL
EN FAIR HAVEN

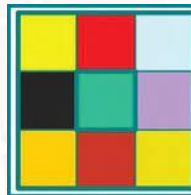




Urban Waters Initiative
Iniciativa de Aguas Urbanas



Save the Sound[®]



Chatham Square
Neighborhood
Association

MARY WADE



SCRCOG

SOUTH CENTRAL REGIONAL
COUNCIL OF GOVERNMENTS



Southwest

Conservation District

Fair Haven Library

River Advocates of

South Central CT



NHS
NEW HAVEN



Greater New Haven
GREEN FUND



Fair Haven

Community Health Care

Armada Brewing



SAVE THE SOUND'S ROLE

Hiring Community Leaders

Contratación de líderes comunitarios

Conducting Photovoice project

Realización de proyecto Photovoice

Coordinating community charrettes

Charrettes comunitarios coordinados

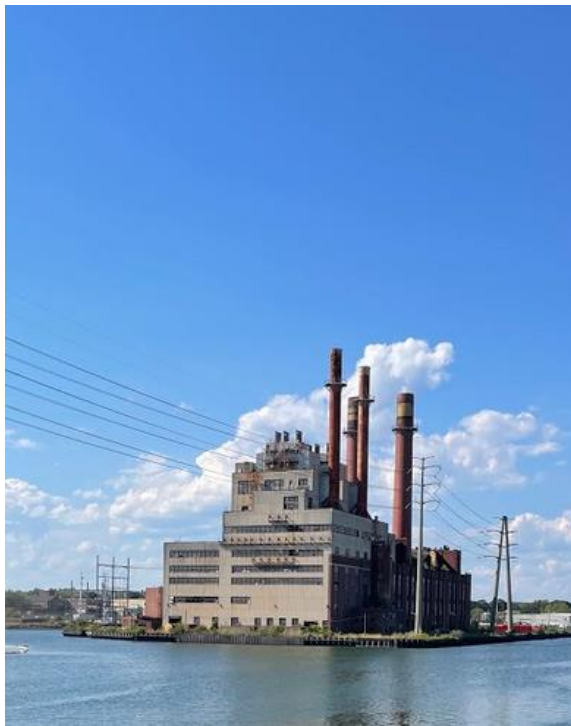
Presenting results to larger New Haven Community

Presentación de resultados a la comunidad

más grande de New Haven



@cfe.savethesound





Recruiting Community Leaders

RECLUTAMIENTO DE LÍDERES COMUNITARIOS

- 1) Outreach through local partners –
personal invitations most successful
- 2) Interviews conducted by selection
panel of community partners
- 3) Final selections made by selection
panel





XÓCHITL GARCÍA

Community Leader, UWI Project

- **Taught the PhotoVoice course to Fair Haven residents**
- **Created an inclusive environment by providing lessons in Spanish**
- **Led environmental stewardship through the UWI program and many others**



Xóchitl García was chosen by the selection committee and was supported by Melissa Pappas at Save the Sound.

Xóchitl García fue elegida por el comité de selección y contó con el apoyo de Melissa Pappas en Save the Sound.

WHAT IS PHOTOVOICE? ¿QUE ES FOTOVOZ?



Data Collection
Recopilación
de datos



Community
y
Comunidad



**Diverse
Perspective**
Diverso
Perspectiva



Storytelling
Cuentacuentos



Photography
Fotografía



**Tools for
Action**
Herramientas
para acción



RECRUITING COMMUNITY RESEARCHERS

RECLUTAMIENTO DE INVESTIGADORES COMUNITARIOS

1. Identified our audience
2. Communication campaign
3. Orientation session

1. Identificamos a nuestra audiencia
2. Campaña de comunicación
3. Sesión orientativa

13

8

5

Participants

We had a wide range of ages from as young as teens to over 65+

Tuvimos una amplia gama de edades, desde adolescentes hasta mayores de 65 años.

English speakers

Elyvia Cavanaugh, Jeremiah Godley, Miktricia Mitchell, Keiana Myles, Samuel Oathout, Desiree Pina, Abigail Storch

Spanish speakers

Maritza Arias, Grisel Aguilar, Yajaira Coque, Adriana Portal, Hector Portal





PHOTOVOICE FOTOVOZ

10 paid training sessions in August
Professional photography lessons

Discussion and storytelling around common themes

10 entrenamientos pagados en agosto

Clases de fotografía profesional.

Discusión y narración de historias en torno a temas comunes.

- How to think like a researcher
- How to think like a storyteller
- History of Fair Haven
- Cómo pensar como un investigador
- Cómo pensar como un narrador
- Historia de Fair Haven

5

Photowalks

Our participants has five designated days to photograph Fair Haven based on their concerns, curiosity, or just because

10

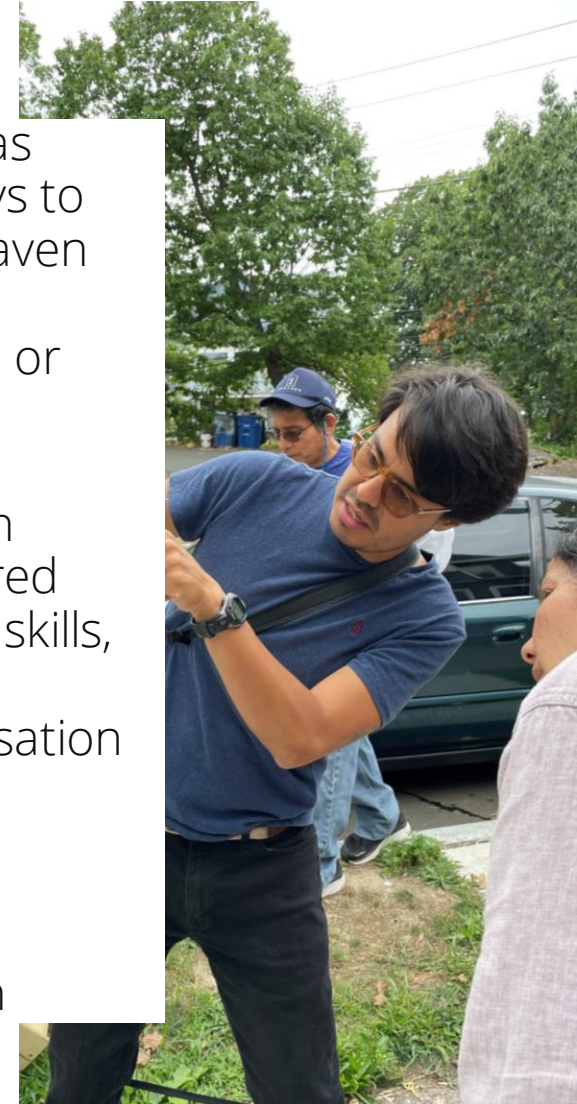
Training sessions

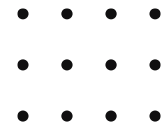
Each group had ten sessions that covered basic photography skills, local history, and community conversation

100

More than 100 photos taken

Our participants worked hard to document as much as they could throughout the summer





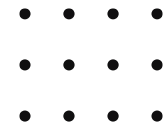
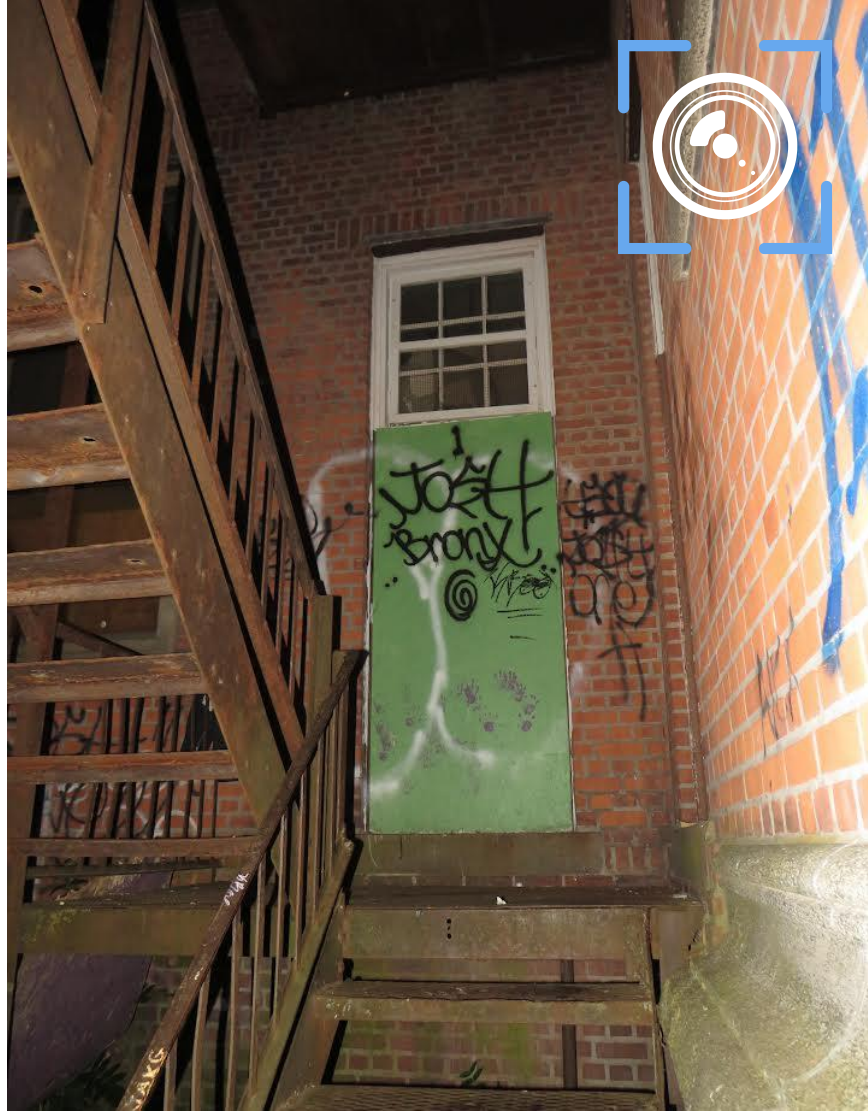
GREEN AND BLUE SPACES

ESPACIOS VERDES Y AZULES

Fair Haven has limited safe and accessible blue and green spaces. Most of the ones that people access are contaminated. Some try to use the spaces for recreation while others use them for survival.

Fair Haven tiene espacios azules y verdes seguros y accesibles limitados. La mayoría de los que la gente tiene acceso están contaminados. Algunos intentan utilizar los espacios para la recreación, mientras que otros los utilizan para la supervivencia.





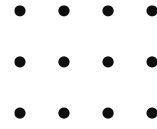
ABANDONED BUILDINGS

EDIFICIOS ABANDONADOS

Some people see abandoned buildings as a lost cause, others say it's filled with potential. There may not be a consensus on its inherent value, they are an eyesore in the neighborhood.

Algunas personas ven los edificios abandonados como una causa perdida, otros dicen que están llenos de potencial. Puede que no haya un consenso sobre su valor inherente, son una monstruosidad en el vecindario.





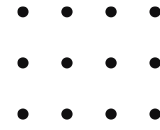
TRASH TRAVELS

LA BASURA VIAJA

Litter is a reflection of how we value a space. Intentional or accidental, litter creates an innumerable amount of consequences. Does litter define Fair Haven? Vice cersa?

La basura es un reflejo de cómo valoramos un espacio. Intencional o accidental, la basura genera una innumerable cantidad de consecuencias. ¿La basura define a Fair Haven? ¿Vicecersa?





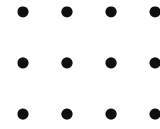
THE HOMELESS

LOS VAGABUNDOS

The pandemic has brought light to what homelessness means. People attempting to shelter in a secluded spot are often ostracized. How can Fair Haven, or better yet New Haven, create spaces where a home can be permanent?

La pandemia ha sacado a la luz lo que significa la falta de una casa. Las personas que intentan refugiarse en un lugar aislado a menudo son condenadas al ostracismo. ¿Cómo puede Fair Haven, o mejor aún, New Haven, crear espacios donde un hogar pueda ser permanente?





A SAFE PLACE?

¿UN LUGAR SEGURO?

What defines a safe place? A quiet neighborhood? Walkable spaces? A place with accessible resources? Fair Haven can offer these qualities but they are systemically placed in areas where not everyone can take advantage.

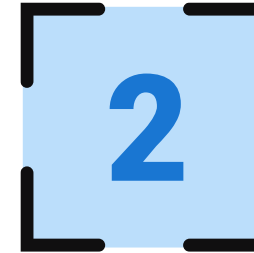
¿Qué define un lugar seguro? ¿Un barrio tranquilo? ¿Espacios transitables? ¿Un lugar con recursos accesibles? Fair Haven puede ofrecer estas cualidades, pero están sistemáticamente ubicadas en áreas donde no todos pueden aprovecharlas.





COMMUNITY derived solutions

SOLUCIONES
DERIVADAS DE LA
COMUNIDAD



Community Charrettes

These events were held on September 15, 2022 at the Fair Haven Public Library

Main ideas

- Diversity
- Inclusivity
- Creativity
- Environmental Stewardship
- Accountability

Ideas principales

- Diversidad
- inclusión
- Creatividad
- Cuidado el medio ambiente
- Responsabilidad



ACTIONABLE SOLUTIONS

There are three solutions that can be implemented in the Fair Haven neighborhood



COMMUNITY
derived
solutions

SOLUCIONES
DERIVADAS DE LA
COMUNIDAD



GREEN AND BLUE SPACES

A healthier neighborhood starts with assessing its cultural populations and infrastructure

Increase outdoor
connection through better
facilities and events

Aumentar fuera
conexión a través de mejores
instalaciones y eventos



COMMUNITY
derived
solutions

SOLUCIONES
DERIVADAS DE LA
COMUNIDAD



TRASH TRAVELS

LA BASURA VIAJA

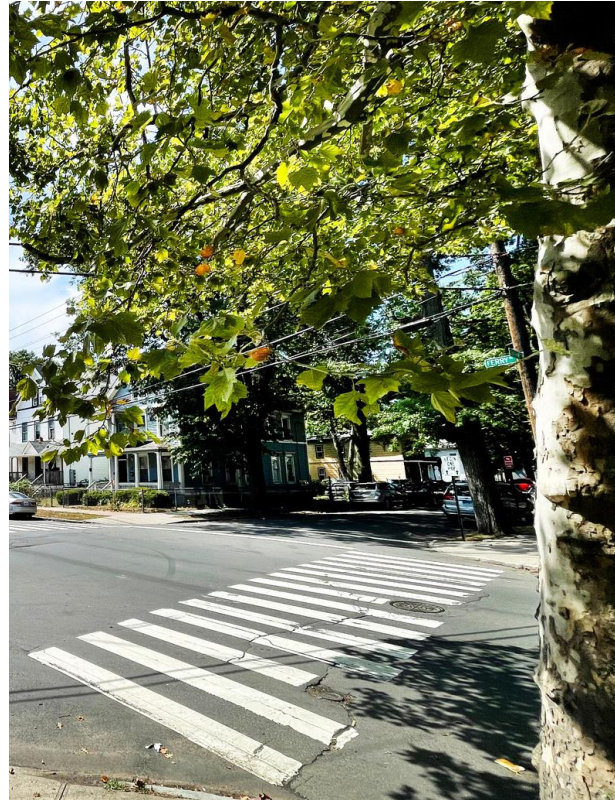
Fair Haven is often stereotyped as as trashy. Not all of its litter and waste is from there.

Creative Campaigning
led by Fair Haven
(extend into New Haven)
Campaña creativa
dirigido por Fair Haven
(extender hasta New Haven)



COMMUNITY
derived
solutions

SOLUCIONES
DERIVADAS DE LA
COMUNIDAD



A Safe Place?

¿Un lugar seguro?

Fair Haven has limited sidewalk space, short crosswalk signals, and overcrowded parking

Improve crosswalks, bus stops, bike lanes, and outdoor seating

Mejorar los cruces peatonales, las paradas de autobús, los carriles para bicicletas y los asientos al aire libre



THANKS!