

CEEJAC

QUARTERLY MEETING

MONDAY, MARCH 18, 2024



AGENDA

- Welcome
- Subcommittee Updates
- DEEP Updates
- Funding Opportunities
- Public Comment Period

WELCOME

FROM CO-CHAIRS:

- Commissioner Katie Dykes
- Dr. Mark Mitchell, MD,
MPH, Emeritus Professor

2026

20 GOALS TO ACHIEVE BY THE END OF 2026

Introduction

A clean and healthy environment is the foundation for a thriving economy.
Successfully delivering on our mission starts with effective process.



20BY26 OVERVIEW

GOAL 1: Adopt Release-Based Regulations to Modernize Connecticut's Cleanup Framework

GOAL 2: Achieve 90% On-Time Completion Rate for Critical Permit Applications

GOAL 3: Reduce the "Legacy" Permit Application Backlog by 65% by 2026

GOAL 4: Strengthen Enforcement Resources

GOAL 5: Expand Compliance Assurance

GOAL 6: Enhanced Financial Assurance Tracking and Management

GOAL 7: Collaboratively Develop Regulations that Implement Recent Environmental Justice Reforms

GOAL 8: Effective Participation for Equity and Environmental Justice

GOAL 9: Enhanced Public Records Transparency

GOAL 10: Expand Tools for Online Resources

GOAL 11: Speed Up Grant and Contracting Processes by 50% for Key Grant Programs

GOAL 12: Expand DEEP Concierge Services to Municipalities and Small Businesses

GOAL 13: Strengthening Communication and Collaboration with DEEP

GOAL 14: Permitting for Decarbonization

GOAL 15: Tools for Navigating Available Federal and State Funding

GOAL 16: DEEP Partnerships with Private Entities in State Parks

GOALS 17–20: Stakeholder Goals



Watch our [kickoff webinar](#) to learn more about the 20BY26 initiative and our goals!

20BY26 Stakeholder GOALS 17-20



GOAL 17



GOAL 18



GOAL 19



GOAL 20

Visit the 20BY26 WEBPAGE

- Read DEEP's kickoff report: [20BY26, Setting the Target: CT DEEP 2026 Goals](#) (Feb. 2024)
- Questions & Comments? Email: DEEP.20by26@ct.gov
- Sign up for email updates [HERE](#)

ROLL CALL

Yaw Darko

Senior Project Specialist, CT Land Conservation Council

Adrienne Farrar Houël

President, Greater Bridgeport Community Enterprises, Inc.,
Bridgeport

Alex Rodriguez

Environmental Justice Specialist, Save the Sound

Terry Adams

Member, Board of Representatives, Stamford

Sharon Lewis

Executive Director, CT Coalition for Economic and Environmental Justice
(CCEEJ)

ROLL CALL

Xochitl Garcia

Bilingual Environmental Justice Advisor, New Haven

Cierra Patrick

Economic Development Manager, City of Groton

Brandon McGee

Deputy Commissioner, Department of Housing

Theresa Hopkins-Staten

President, Eversource Energy Foundation, VP Corporate Citizenship and Equity

Paul O. Robertson

Deputy Commissioner, CT Department Economic and
Community Development

Karen Kitsis

Deputy Commissioner, CT Department of Transportation

ROLL CALL

Leticia Colon de Mejias

Founder, Efficiency for All, Windsor

Lori Mathieu

Public Health Branch Chief, CT Department of Public Health
Attending for Commissioner Manisha Juthani

Maisa Tisdale

President, The Mary and Eliza Freeman Center for History and Community,
Bridgeport

GROUND RULES

1. Listen respectfully, without interrupting
2. Listen actively and with an ear to understanding others' views
3. Only have one conversation at a time
4. Be mindful to give others and opportunity to speak
5. Focus on the task at hand rather than the position

6. Avoid off-topic conversations
7. Criticize ideas, not individuals
8. Commit to learning, not debating
9. Avoid blame, speculation, and inflammatory language
10. Avoid assumptions about any member of the workgroup

SUBCOMMITTEE

Updates

Water Subcommittee Updates

Members:

Cierra Patrick (Chair), Sharon Lewis, Maisa L. Tisdale, Mark Mitchell, Lori Mathieu, Mary Pelletier, Denise Savageau, Anne Hulick, Alicea Charamut

DEEP Staff:

Graham Stevens, Bureau Chief, Water Protection & Land Use

Update:

- Met in Jan 2024 to support IWPM 2.0
 - Provided feedback on their proposed approach to identifying priority areas in rural and urban EJ communities in CT
 - Hoping to build on IWPM 2.0 and support restoration plans between community organizations, residents, and municipalities
- Brought on new subcommittee members

Upcoming:

- March 20, 2024; 2:00 pm – Subcommittee Members Coordination Meeting
- April 23, 2024; 5:30 pm (Public Meeting) - Urban Waters Initiative Presentation

Waste Subcommittee Updates

Members:

Sharon Lewis (co-chair); Adrienne Farrar Houël (co-chair), Mark Mitchell, Marc Gonzalez

DEEP Staff: TBD

Update:

- Following recent events related to:
 - MIRA Dissolution Authority and former site of MIRA Plant in Hartford
 - Concerns related to AB ECO Park, a proposed waste incineration plant in North Haven

Upcoming:

- Exploring plastics disposal and recycling in CT
- Understanding EJ implications of proposed waste management technology

Air & Transportation Updates

Members:

Alex Rodriguez (Chair), Jay Stange, Karen Kitsis, Robbie Goodrich, Maritza Bond, Aziz Dekhan, Daphne Dixon, Terry Adams, Mark Mitchell, Sharon Lewis, Xochitl Ahtziri, Ryan Boggio, and Sharmin Akter

DEEP Staff:

Paul Farrell, Planning & Standards Director; Pete Babich, Planning & Standards Division Asst. Director; Jacob Felton, Enforcement Division Director; Jaimeson Sinclair, Engineering Director

Update:

- Met in Jan 2024 to discuss:
 - History of EJ organizing around Clean Air and Clean Transportation in CT
 - Learned about proposed emission standards in CT through clean cars and clean trucks regulations
 - Discussed how residents can be engaged in advocacy work

Upcoming:

- TBD – in-person meeting to discuss state incentive programs (CHEAPR and CHEAPR+) to purchase EV cars and eBikes

Land Subcommittee Updates

Members:

Yaw Darko (Chair), Sharon Lewis, Alex Rodriguez, Terry Adams, Gustavo Requeno Santos, Leticia Colon de Mejias, Anna Pickett, Reginald Saint Fortcolin, Kathy Czepiel, Mark Mitchell

DEEP Staff:

Danica Doroski, Ph.D, Urban Forester;
Lindsey Suhr, Director Land Acquisition and Management

Update:

- Met with OPM's Office of Sustainable Growth about state's draft Conservation and Development Plan for 2025-2030.
 - State's plan for land and water resource conservation and development
 - Launching an integrated vision seeking to guide more collaboration and cross-communication within state agencies and communities
 - Subcommittee provided feedback on centering environmental justice within the tension between conservation and development

Upcoming:

- April 4, 2024, 1-3pm Open Space and Watershed Land Acquisition (OSWA) - EJ Considerations within the application and evaluation criteria

DEEP

- **Proposal: PowerUp New England**
- **Multi-State Climate Pollution Reduction Grant (CPRG) Heat Pump Application**

Updates



DOE GRIP GRANT PROGRAM FUNDING OPPORTUNITY

Presentation created by: Ben North, Claire Sickinger, and Josh Walters
Bureau of Energy and Technology Policy

WHAT IS THE GRID RESILIENCE AND INNOVATION PARTNERSHIP (GRIP) PROGRAM?

- The GRIP program is a **\$10.5 billion grant program in total** through the U.S. Department of Energy (DOE) to enhance our energy grid against growing threats of extreme weather and climate change.
- This grant program will help communities access **affordable, reliable, and clean electricity**.
- A key point of emphasis from the DOE is to provide a well-developed plan for **how projects are engaged with and will provide benefits to local disadvantaged and environmental justice communities affected by** the project.

NEW ENGLAND - GRIP FUNDING APPLICATION

- The current **funding cycle from DOE includes \$1.8 billion** that will go to applicants from across the country with applications due on April 17th.
- The **six New England states are collaborating** to apply to the current GRIP funding cycle for a project called **Power Up New England**.
- The Power Up New England could result in **>\$1 billion of public and private investment** towards advancing New England's energy grid towards a clean energy future.

POWER UP NEW ENGLAND - GRIP FUNDING APPLICATION

- We would like to use this opportunity to **inform CEEJAC of the components of Power Up New England that impact CT and welcome input from CEEJAC to help ensure beneficial impacts** and engagement with local communities.
- We would also like to clarify that New England's **GRIP application has not yet been granted funding**. Applications are due April 17th and awards will be announced in late 2024.
- However, in the event Power Up New England is funded, it is important we **begin the public engagement process** now to ensure effective community engagement and impact.

WHAT IS POWER UP NEW ENGLAND?

The **four sub-projects included** in New England’s funding application include the following:

Category	Size	Company	State
Point of Interconnection (POI) for Offshore Wind Energy	2400 MW transmission capacity	National Grid	MA
Point of Interconnection (POI) for Offshore Wind Energy	2400 MW transmission capacity	Eversource	CT
Energy Storage System	100 MW battery	Form Energy	ME
Energy Storage System	125 MW battery	Elevate Renewables	CT

MONTVILLE POINT OF INTERCONNECTION (POI) PROJECT DETAILS

Location: Montville, CT in New London County

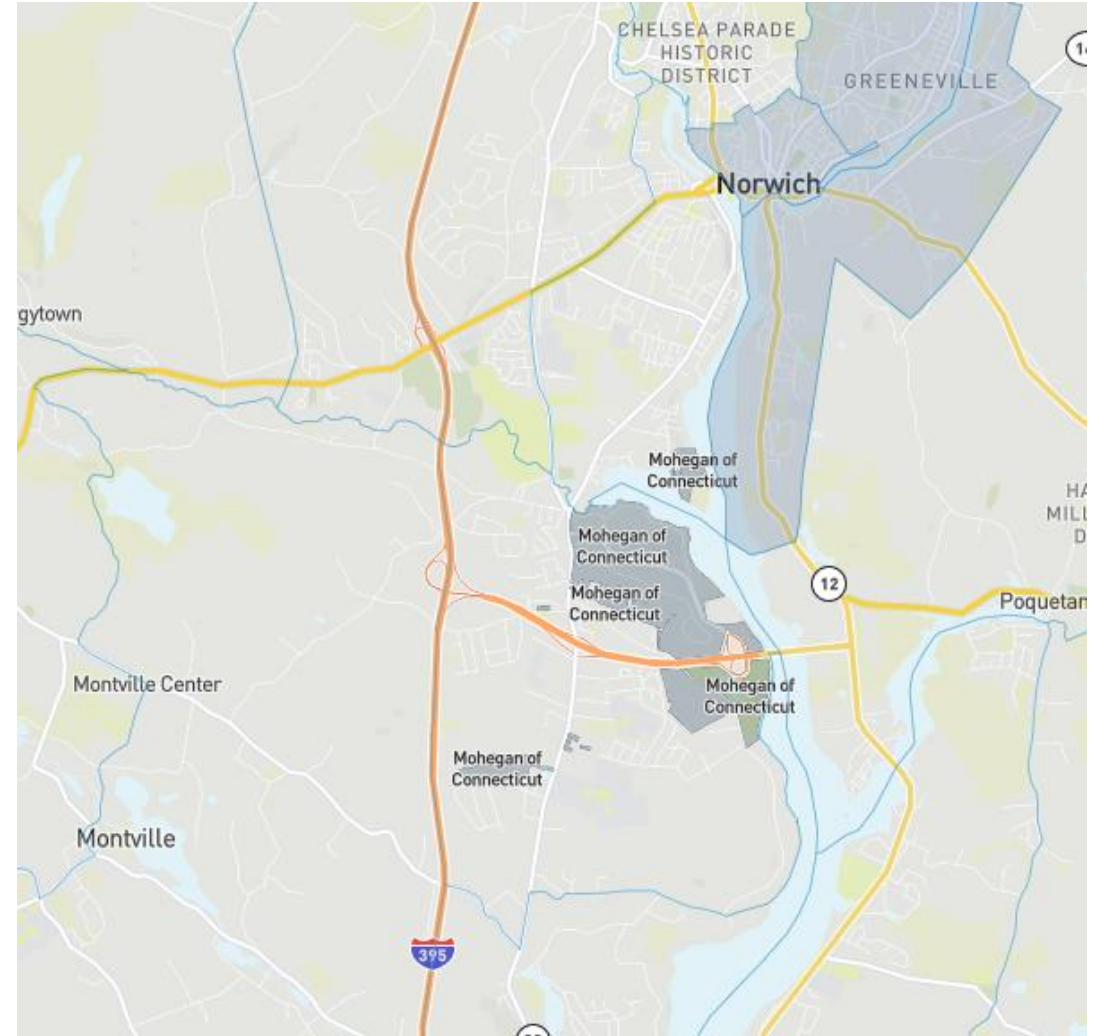
Developer: Eversource Energy

Technology: A new 345 kV switching station in eastern Connecticut to create a new distinct point of interconnection (POI) to enable significant injections of offshore wind (OSW) energy into New England.

Project Size: Switching station with 2400 MW of transmission capacity

Map: Shaded Areas Represent Disadvantaged Census Tracts

Source: U.S. Climate and Economic Justice Screening Tool



POTENTIAL GRID BENEFITS AND COMMUNITY IMPACTS

EVERSOURCE - MONTVILLE POINT OF INTERCONNECTION (POI)

Potential Project Benefits and Impacts:

1. Project will enable delivery of 2,400 MW of offshore wind energy.
2. This project has a direct emissions reduction and resilience benefits in environmental justice communities, tribal nations and DACs in surrounding areas and New England as a whole.
3. The project enables more diversified energy generation in New England, can enhance grid reliability for the region, and can reduce demand for fossil resources.
4. Enabling the flow of offshore wind (OSW) energy into New England is critical to meeting state and regional clean energy and decarbonization goals.

POTENTIAL COMMUNITY ENGAGEMENT EFFORTS AND PLANS

EVERSOURCE - MONTVILLE POI

- **Public information sessions** in key locations to provide project details, educational materials and access to experts.
- **Focus groups and community advisory councils**, made up of stakeholders compensated for their time, to determine how the project will impact the community and identify community-specific strategies to inform the Community Benefits Plan with measurable goals.
- **Benefit agreements with Montville and surrounding communities** (including New London, with designated disadvantaged communities).
- Eversource has initiated outreach to and is soliciting **support from Montville, New London, East Lyme and Waterford**; UConn; the Greater New England Minority Supplier Development Council; CT Business and Industry Association; CT Municipal Electric Energy Cooperative; CT Conference of Municipalities; Chamber of Commerce in Eastern CT; the CT Workforce Investment Board; the Northeast Clean Energy Council and the Southeastern CT Enterprise Region.

NEW HAVEN ENERGY STORAGE PROJECT DETAILS

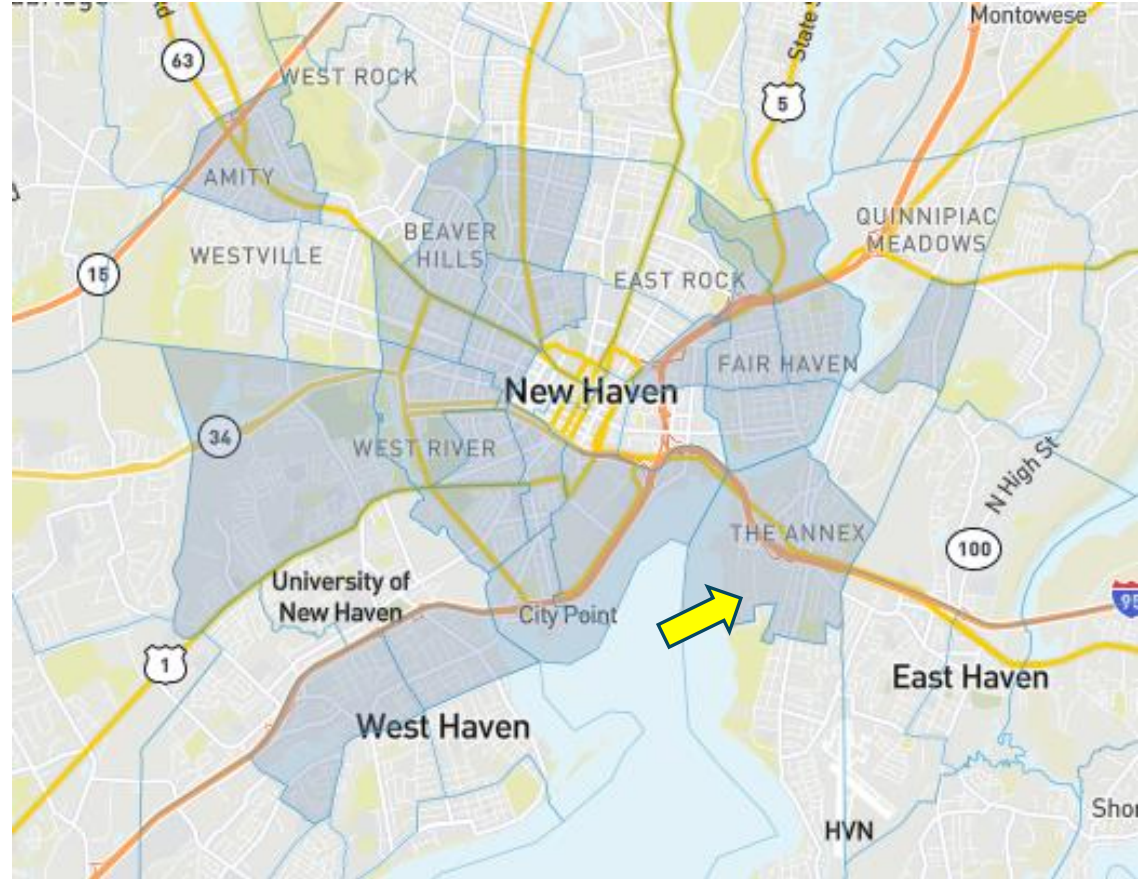
City/Town: New Haven, CT

Developer: Elevate Renewables

Site location: PSEG Harbor
Generating Station (fossil fuel power
plant)

Technology: Four-hour, front-of-the-
meter Battery Energy Storage System
(BESS) equipped with grid-forming
inverters

Project Size: 125 MW



Map: Shaded Areas Represent Disadvantaged Census Tracts
Source: U.S. Climate and Economic Justice Screening Tool

POTENTIAL BENEFITS AND COMMUNITY IMPACTS

ELEVATE RENEWABLES - NEW HAVEN ENERGY STORAGE

Potential Benefits and Impacts of Project:

1. Can **reduce use of fossil fuels** at existing power generation facility which is **surrounded by an environmental justice community**.
2. The project is also seeking to enhance distribution **system reliability for the local community**.
3. Also incorporates innovative **grid forming inverter technology** which can increase regional **grid reliability**.

POTENTIAL COMMUNITY ENGAGEMENT EFFORTS AND PLANS

ELEVATE RENEWABLES – NEW HAVEN ENERGY STORAGE

- Energy burden reduction **educational programs** in the local community.
- **Working groups and community advisory councils** to determine how the project will impact the community and identify community-specific strategies to inform the Community Benefits Plan with measurable goals.
- **Elevate expects to work with the Greater New England Minority Supplier Development Council** to award contracts to organizations owned by individuals that are part of historically disadvantaged groups.

FEEDBACK FROM CEEJAC TO ENHANCE COMMUNITY ENGAGEMENT AND LOCAL IMPACTS

Now that we have provided initial details on these sub-projects and their potential community benefits and impacts, we **welcome additional feedback that CEEJAC may have**, in the event Power Up New England does receive funding from the DOE grip program.

Again, the **funding of these projects is not yet guaranteed** but it is important we **begin the stakeholder engagement process** now to ensure effective community engagement and impact. Applicants will be **notified of selections in late Summer or Fall 2024**.

To **provide additional feedback on these sub-projects** and your thoughts on **local community engagement** please contact:

Claire.Sickinger@ct.gov

Benjamin.North@ct.gov

EPA CLIMATE POLLUTION REDUCTION GRANT COMPETITION MULTI-STATE HEAT PUMP COALITION APPLICATION

LOW-INCOME AND DISADVANTAGED COMMUNITY (LIDAC) BENEFITS AND OPPORTUNITIES

Delivery of Benefits

- Advisory Council for LIDAC Regional and/or State-Level Program
- Enable Braiding of Funds
- Additional Incentives for Contractors to Deliver Benefits to LIDAC
- Tracking metrics (installations, engagement, coordination)

Workforce Development Opportunities

- Design Workshops Specifically for Weatherization Assistance Program and LIDAC Service Providers
- Grow key business and workforce training partnerships within LIDAC communities by creating/strengthening relationships with distributors, manufacturers, and implementers through this program.

FUNDING OPPORTUNITIES

- **EPA Community Change Grants**
- **EPA Region 1 Environmental Justice Grantmaking Program**
- **Long Island Sound Study Grant Writing Assistance Program**



COMMUNITY CHANGE GRANTS

Environmental and Climate Justice

U.S. Environmental Protection Agency

[3/18/2024]

[Keyana White, Environmental Protection Specialist, EPA Region 1]

[D'Shyla Hodge, Environmental Protection Specialist, EPA Region 1]

Overview of
**Community
Change Grants
Program**

1



Introduction

EPA received \$3 billion through the Inflation Reduction Act (IRA) to fund environmental and climate justice activities to benefit disadvantaged communities.

- \$2.8 billion for grants including \$2 billion for the Community Change Grants (CCG) Program
- \$200 million for technical assistance related to the grants
- Grants cannot exceed three years (no extensions)
- All grants must be awarded by September 30, 2026



Goals

Designed with meaningful community, Tribal, and other stakeholder input, the investments EPA makes through the Community Change Grants are intended to achieve the following goals:



Fund community-driven pollution and climate resiliency solutions



Invest in strong cross-sectoral collaborations with partners working with and for communities



Unlock access to more significant resources



Deliver technical assistance and capacity-building support



Strengthen communities' decision-making power



Track I

Community-Driven Investments for Change

Funding Available: approx. \$1.96 billion

Number of Awards: approx. 150

Per Award Amount: \$10M - \$20M each

Track II

Meaningful Engagement for Equitable Governance

Funding Available: approx. \$40 million

Number of Awards: approx. 20

Per Award Amount: \$1M - \$3M each

Technical Assistance

- [Community Change Technical Assistance Program](#)
- [Equitable Resilience Technical Assistance Program](#)
- [Thriving Communities Technical Assistance Centers \(TCTACs\)](#)





Types of TA

- Community Change Technical Assistance (CCTA)
 - Broad-based pre-award and post-award TA
 - Submit an on-line TA Request Form
 - Call to make a TA Request or ask questions:
1 (800) 540-8123
 - Email: EJ_TechAssist@epa.gov
- Community Change Equitable Resilience Technical Assistance (CCER TA)
 - Submit an on-line TA Request Form
 - More limited and tailored TA focusing on disaster-prone areas

Overview of **Threshold Eligibility Criteria**

2



Eligibility

Applications must meet **all** eligibility criteria, as outlined in [Section III](#) of the NOFO, to be considered for funding.



Comply with the content and submission requirements.



Meet the eligibility and statutory partnership requirements in [Section III.A](#).



Meet threshold criteria in [Section III.D](#), including that the projects will benefit disadvantaged communities.



Projects must be completed within three years.



Applications to conduct scientific research; assessment, removal, or remediation of Superfund sites; or community relocation are ineligible.



Statutory Partnership

Applicants must either be a partnership of two community-based nonprofit organizations (CBOs) or a partnership between a CBO and a federally recognized Tribe, local government or institution of higher education.

Partnerships must be documented and meet certain legal requirements (see [Appendix B](#)).

Additional information on eligibility and partnerships can be found in [Section III](#) of the NOFO.



Note: While the CBO does not have to be the "Lead Applicant," all statutory partnerships must include a CBO.

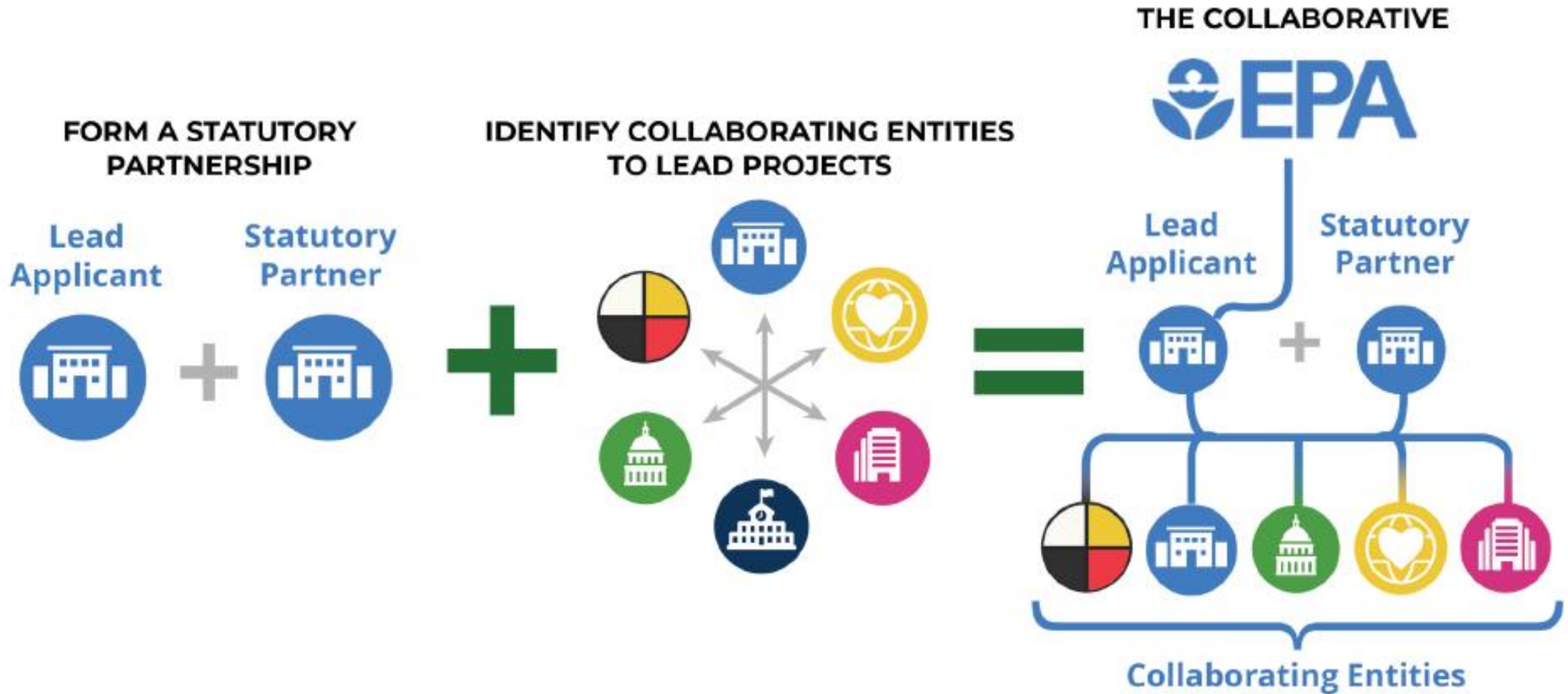
Collaborating Entities

Other entities can be involved in projects as **collaborating entities**.

Collaborating Entities may include entities that legally could be Statutory Partners (CBOs, Federally-recognized Tribes, local governments, and institutions of higher education) and entities that cannot legally be Statutory Partners (e.g., states and territorial governments).

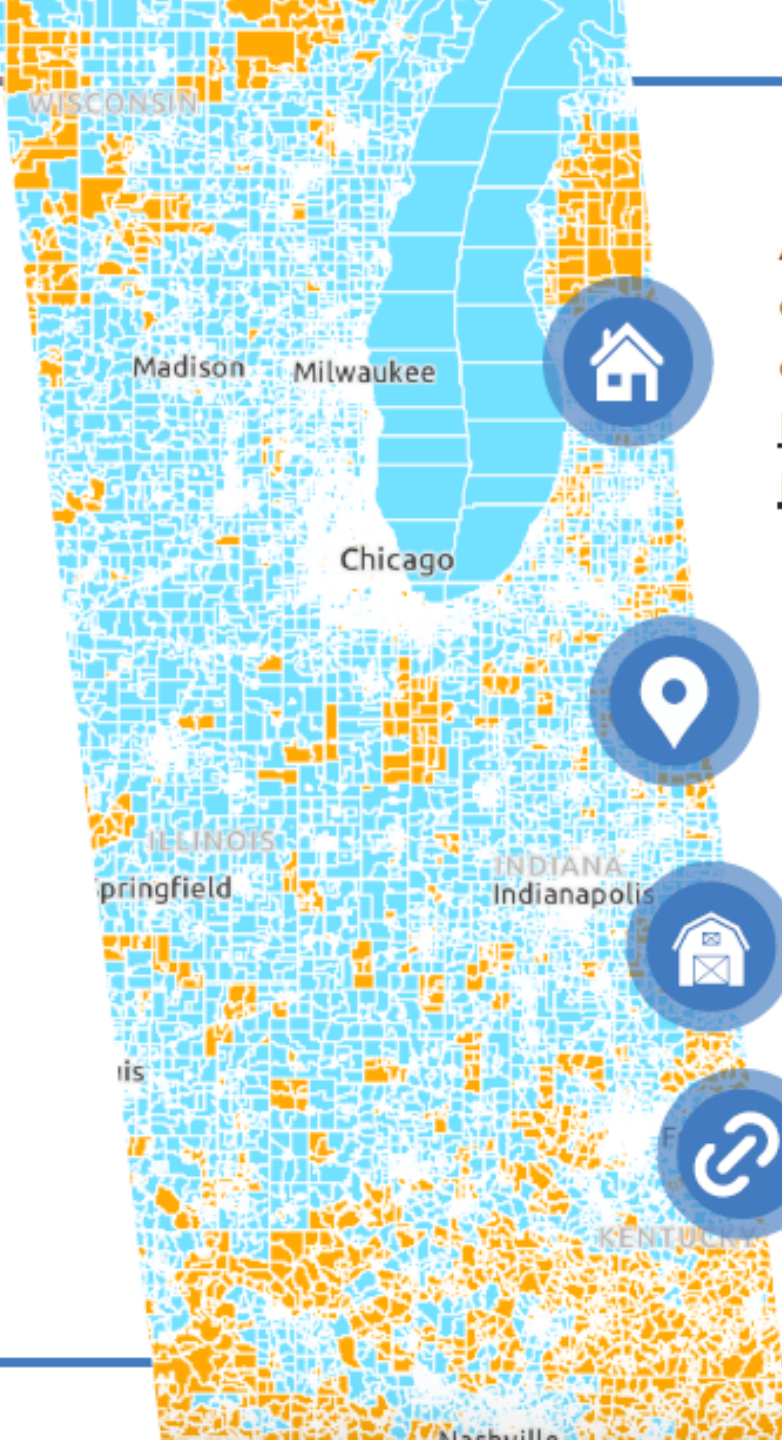


How It Works



Disadvantaged Communities

Applicants must demonstrate that the projects in their application will benefit a disadvantaged community. EPA is defining disadvantaged community as one that meets at least one of the following criteria:



A geographically-defined community identified as disadvantaged on the [EPA IRA Disadvantaged Communities Map](#)



A Disadvantaged Unincorporated Community (DUC)

OR



A farmworker community



More information can be found in [Appendix A](#) of the NOFO.

Target Investment Areas



\$50M
**Disadvantaged
Unincorporated
Communities**



\$150M
**Tribes in
Alaska**



\$300M
**Tribal
Communities**
(lower 48 states + HI)



\$100M
**Southern
Border
Communities**



\$50M
U.S. Territories

Note: These Track I investment area amounts are approximate and may be adjusted based on the quantity and quality of applications received.

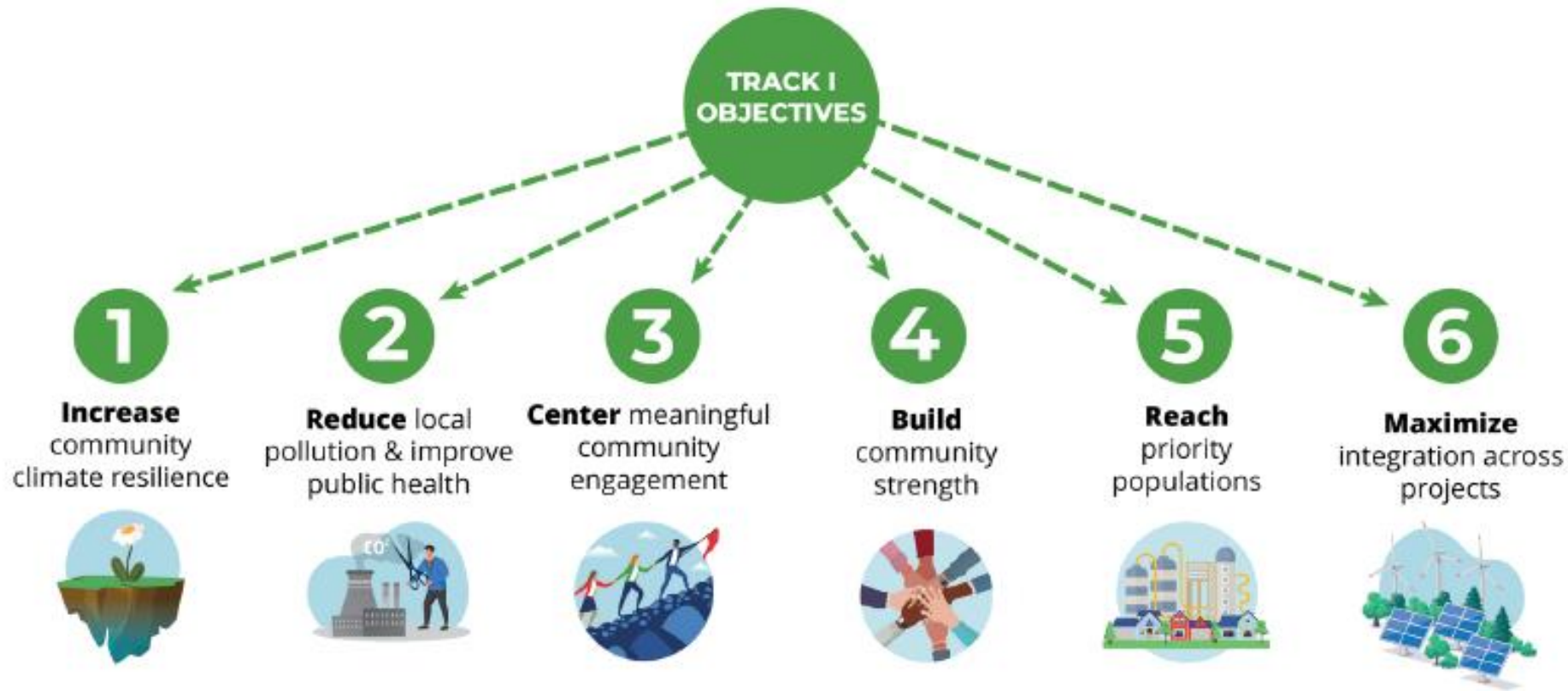
Track I and Track II Overview

4



Track I: Community-Driven Investments for Change

Projects under this track should ensure generations of future enjoyment and growth by meeting the below objectives:



Track I: Community-Driven Investments for Change

Track I applications must also address these requirements, as further described in those in [Section I.G](#) and [Section IV.B.](#) of the NOFO:

Strategies

- [Climate Action](#)
 - Green Infrastructure & Nature-Based Solutions
 - Mobility & Transportation Options
 - Energy-Efficient, Healthy and Resilient Housing & Buildings
 - Microgrid Installation
 - Community Resilience Hubs
 - Brownfield Redevelopment
 - Waste Reduction & Management
 - Workforce Development
- [Pollution Reduction](#)
 - Indoor Air Quality & Community Health
 - Outdoor Air Quality & Community Health
 - Clean Water Infrastructure
 - Hazardous Waste Management

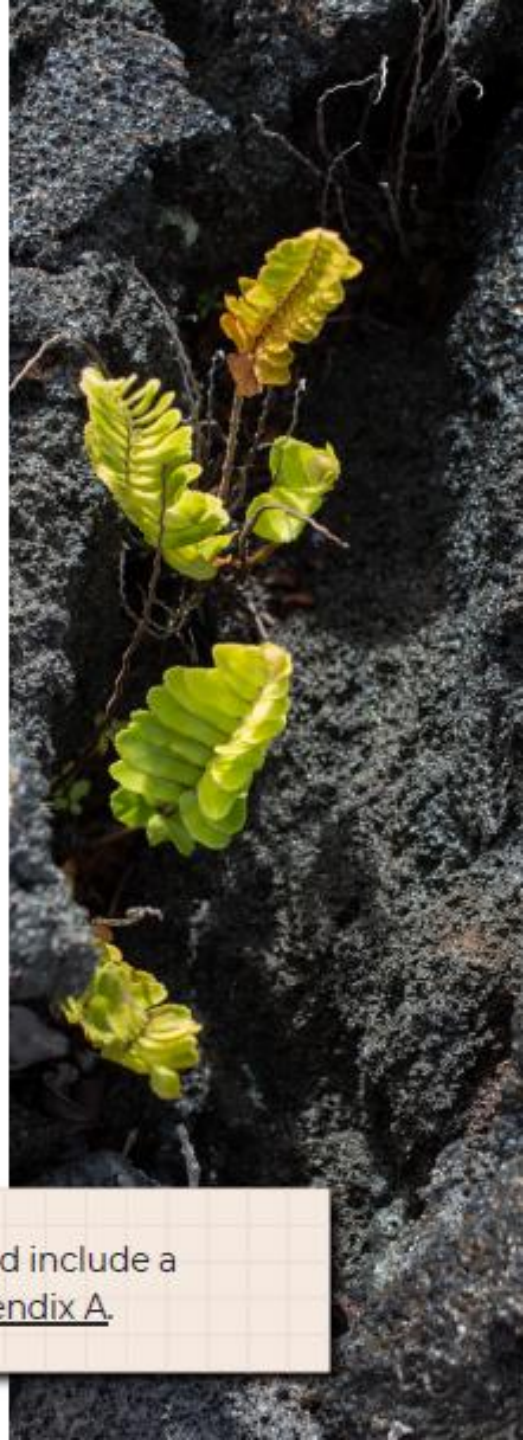
Plans

- Community Engagement and Collaborative Governance Plan
- Community Strength Plan

Additional Requirements

- Readiness Approach
- Compliance Plan

Note: Projects must be place-based and include a Project Area Map, as described in [Appendix A](#).



Track II: Meaningful Engagement for Equitable Governance

Objectives

- To build the capacity of communities to evaluate and redress environmental and climate injustices.
- To give disadvantaged communities a meaningful voice in government decision-making processes.

Project Examples

- Educational and Training Programs
- Environmental Advisory Boards (EABs)
- Collaborative Governance Activities
- Participation in Governmental Funding and Budgeting Processes



6

Overview of
**Application
Submission, Evaluation
and Selection Process**



ROLLING APPLICATION



November 21,
2023

Applications
Open

Applications will be accepted, reviewed and awarded on a rolling basis.



November 21,
2024

Applications
Close

Application packages will be accepted until November 21, 2024, at 11:59 PM (Eastern Time) through [grants.gov](https://www.grants.gov).

SELECTION PROCESS

Track I

Eligibility

Applications reviewed for threshold eligibility.

Written Evaluation

Written applications that receive a score of 110 or higher (out of 155) will be invited to give an oral presentation.

Oral Presentations

Worth a maximum of 45 points.

Applications with a combined score of 170 or more, based on written and oral, move to final selection consideration.

Final Consideration

Applications receiving a combined score of between 110 and 169 will be ranked and reviewed approx. monthly for final selection consideration.

Track II

Applications reviewed for threshold eligibility.

Written applications that receive a score of 85 or higher (out of 100) will move to final selection consideration.



Applications receiving a score below 85 will be ranked and reviewed approx. monthly for final selection consideration.



Debriefings and Disputes

Applicants who are deemed ineligible or who are not selected for funding may request a debriefing.

For more information on the debriefing and dispute process, see [Section VI](#) of the NOFO.

Resubmission

Applicants who are deemed eligible but are not selected for funding may, after timely requesting and receiving a debriefing on the application, resubmit.

For more information see [Section II.C](#) of the NOFO.

Key Points

Check for Eligibility

- We know the NOFO is long but read it carefully!
- Make sure you meet the partnership eligibility requirements ([Section III.A](#)) and applicable threshold eligibility requirements ([Section III.D](#)).

Understand the Requirements for Different Tracks

- There are different requirements and evaluation criteria for Track I and II applications ([Sections IV.B](#) and [V](#)).
- Alaska Tribal and U.S. Southern Border target investment areas have unique requirements ([Section II.B](#) and [Appendix H](#)).
- Though it was not covered today, review the NOFO to understand the post-award and other requirements ([Section VI](#)).

Triple Check Your Application

- Make sure you do not exceed the page limits for the Project Narrative portion of the application package and other attachments ([Section IV.B](#)).
- Include all applicable attachments and forms to the application package ([Section IV.B](#)).
- Make sure your project narrative addresses all the evaluation criteria, depending on if you are applying for Track I or II ([Section V](#)).



Important Links

In addition to the application requirements in the NOFO, it's important to understand what will be expected of grantees if they are awarded a grant. Below are a few important links to programmatic and administrative information - be sure to read the NOFO in full to understand them:

- [Fraud, Waste & Abuse](#)
- [Davis Bacon Act](#)
- [Build America Buy America](#)
- [EPA's General Terms and Conditions](#)
- [EPA's Solicitation Clauses](#)
- [Best Practice Guide for Procuring Services, Supplies, and Equipment Under EPA Assistance Agreement](#)
- [Methods of Procurement \(2 CFR 200.320\)](#)
- [Participant Support Costs \(2 CFR 1500.1\)](#)
- [Reporting Requirements \(Section IV\)](#)
- [Appendix G: Indirect Costs](#)



Future Developments

- **NOFO Modifications:** The NOFO will likely be modified a few times while it is open to clarify issues as necessary.
- **Frequently Asked Questions:** FAQs will be posted to the [CCG website](#) and updated regularly to address NOFO questions.
- **Future Webinars:** Check the [CCG website](#) often for dates for future webinars and recordings.



Final Thoughts



Find partners and build coalition



Identify meaningful transformative projects to address environmental and climate justice concerns that can be completed within 3 years ↪ (Track I)



Identify governmental policies and programs that can be improved with community voices (Track II)



Register on **SAM.gov** and **Grants.gov** *now* (this process can take up to a month)



You can follow up with questions at **CCGP@epa.gov**



Stay up to date on webinars by signing up for EPA EJ listserv by sending a blank email to **join-epa-ej@lists.epa.gov**

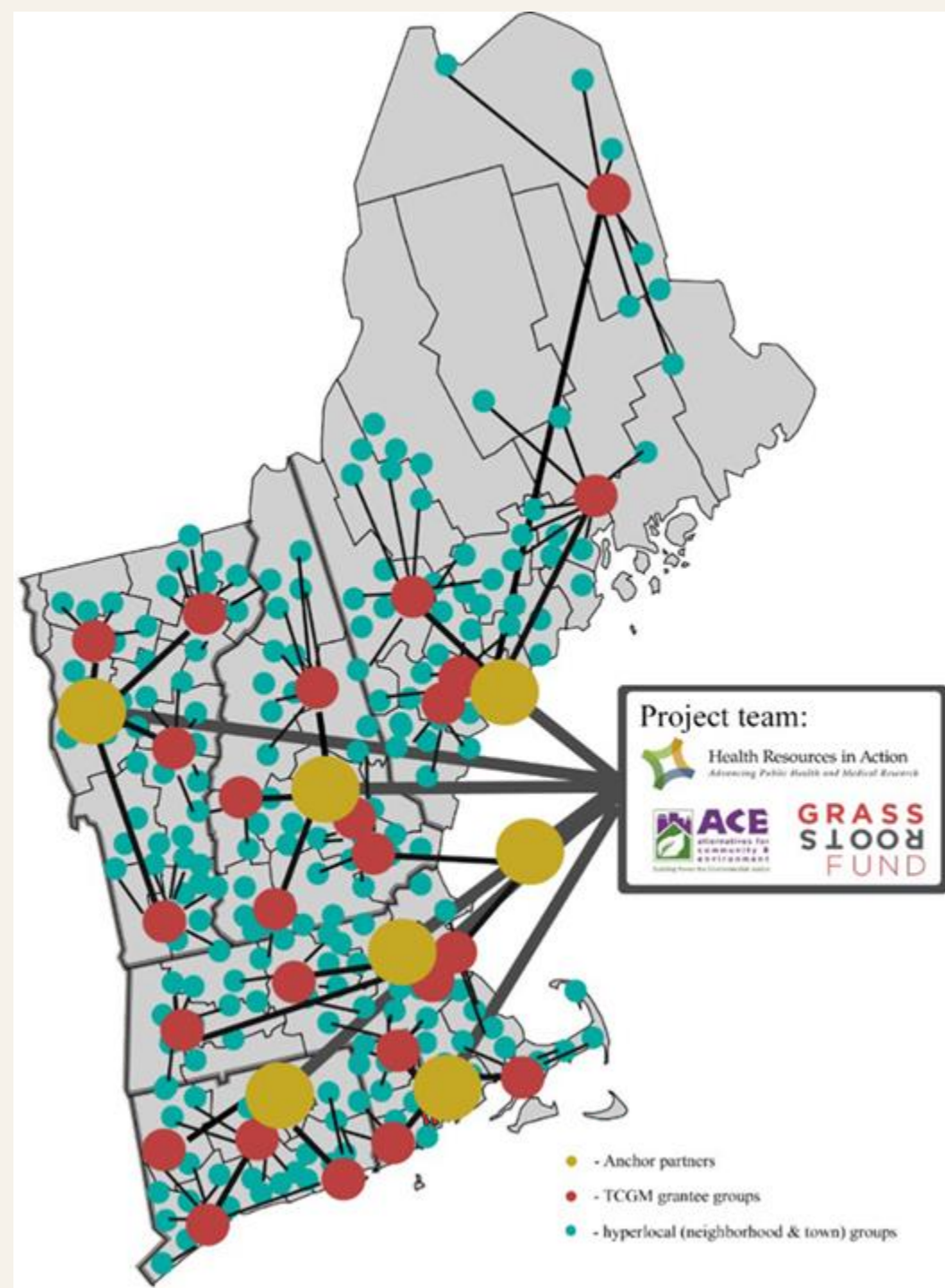


Grantmaking to Build Sustained Environmental Justice Capacity and Networks across EPA Region 1

CEJAC Quarterly Meeting
March 18, 2024



**HEALTH
RESOURCES
IN ACTION**



Background

- Environmental Protection Agency's Environmental Justice (EJ) Thriving Communities Grantmaking Program is providing \$50M/each to grantmakers serving each region of the U.S. over three years.
- **Goal of Program:** support CBOs, EJ organizations, nonprofit organizations, and other entities representing underserved, urban, rural, indigenous, remote, and capacity constrained communities in implementing projects to address local environmental and/or public health challenges.
- Part of the Justice40 Initiative, launched by Exec Order in 2021, mandates that 40% of the overall benefits of certain fed investments flow to communities that have been marginalized, underserved and overburdened by pollution and climate change.



Core Partners: HRIA, ACE and Grassroots Fund



We aim to counter historical disinvestment in communities on the frontlines of the climate crisis including communities of color, immigrant communities, indigenous communities, and low-income communities. This opportunity seeks to seed and build deeper capacity for a sustainable environmental justice movement to address environmental hazards, climate resiliency, and energy justice, and build livable and healthy communities. This funding, which includes \$40 million in grants over three years, comes as an effort by the Biden-Harris Administration to strip away traditional barriers communities have faced in applying for federal grants.

Process

- Project Team will engage CBOs (“Anchor Organizations”) to seed and build deeper capacity for a sustainable EJ movement throughout NE and will work closely with a Governance Council to guide decisions.
- Community Grants will support CBOs, EJ organizations, nonprofit organizations, and other entities representing underserved, urban, rural, indigenous, remote, and capacity constrained communities in implementing projects to address local environmental challenges.



Grant Categories as determined by EPA

**Phase I: Grants for
Assessment**

Funding Period: 1 year Funding Amount: up to \$150,000

Phase II: Grants for Planning

Funding Period: 1- 2 years Funding Amount: up to \$250,000

**Phase III: Grants for
Implementation**

Funding Period: 2 years Funding Amount: up to \$350,000

We will also make noncompetitive \$75,000 subawards severely capacity-constrained community based nonprofit organizations with limited capacity to carry out Federally funded projects for assessment (with approval from EPA). This is yet to be defined.

Examples of Environmental Issues to Address and Project

Types:

- Air quality & asthma
- Fence line air quality monitoring
- Monitoring of effluent discharges from industrial facilities
- Water quality & sampling
- Small cleanup projects
- Improving food access to reduce vehicle miles traveled
- Stormwater issues and green infrastructure
- Lead and asbestos contamination
- Pesticides and other toxic substances
- Healthy homes that are energy/water use efficient and not subject to indoor air pollution
- Illegal dumping activities, such as education, outreach, and small-scale clean-ups
- Emergency preparedness and disaster resiliency
- Environmental job training for occupations that reduce greenhouse gases and other air pollutants
- Environmental justice training for youth



Things to Know:

- Anticipate launch of Request for Proposals in Fall 2024, and then several times through to early 2026.
- Applicants must be 501c(3), and register at SAM.gov
- Technical assistance and capacity building to help during process.
- Variety of submittal options – being determined with equity in mind.
- Applicants may get feedback and resubmit unfunded proposals in next round.
- EPA regulations will be applicable for subawards.
- Grants will be cost-reimbursement (generally with monthly payment (for severely restricted, two-week turn will be optional).

Sign up for Updates Here: ejgrantsnewengland.org



The Grantmaking Process

GRASS
ROOTS
FUND

Mission:

To energize and nurture long-term civic engagement in local initiatives that create and maintain healthy, just, safe and environmentally sustainable communities

- 501(c)3 public charity
- Non-endowed (35+ funding partners & hundreds of donors)
- Directly fund unincorporated groups/ad hoc
- Funding 300-400 groups annually
- Founded 26 years ago by northeast foundations



Grow Grant Cycle

The Grassroots Fund Grow grantmaking cycle is steeped in a participatory process that intentionally and explicitly involves the New England community in decisionmaking about grant funding. Because of this there are multiple steps that take place between grants being submitted by community groups and final decisions being communicated. In general, this process takes approximately three months. Below you'll find a rough approximation of the steps and time that goes into the Grow grantmaking cycle.



Participatory Grantmaking

Sharing power means distributing the actions of decision-making, program creation, implementation, and impact evaluation across all process participants, truly blurring any rigid divide between designer and participant, expert and beneficiary.

Community Roles in this Process

Grant program design & evaluation:

- **Anchor Organizations** in each state to provide community context
- **Governance Council** to serve as planning committee for the grantmaking review process

Grant application review & decision making:

- Open call for **readers** to review all applications
- **Grantmaking Committee**

For **updates** and more information about the program—including **how to apply for grants**—please fill out the form on this landing page. We will share more information on this funding opportunity when it becomes available.



ejgrantsnewengland.org/



Long Island Sound Study
A Partnership to Restore and Protect the Sound



Photo credit: Sara Powell

Long Island Sound Grant Writing Assistance Program – Presentation for CEEJAC

March 18, 2024



Comprehensive Conservation & Management Plan Themes

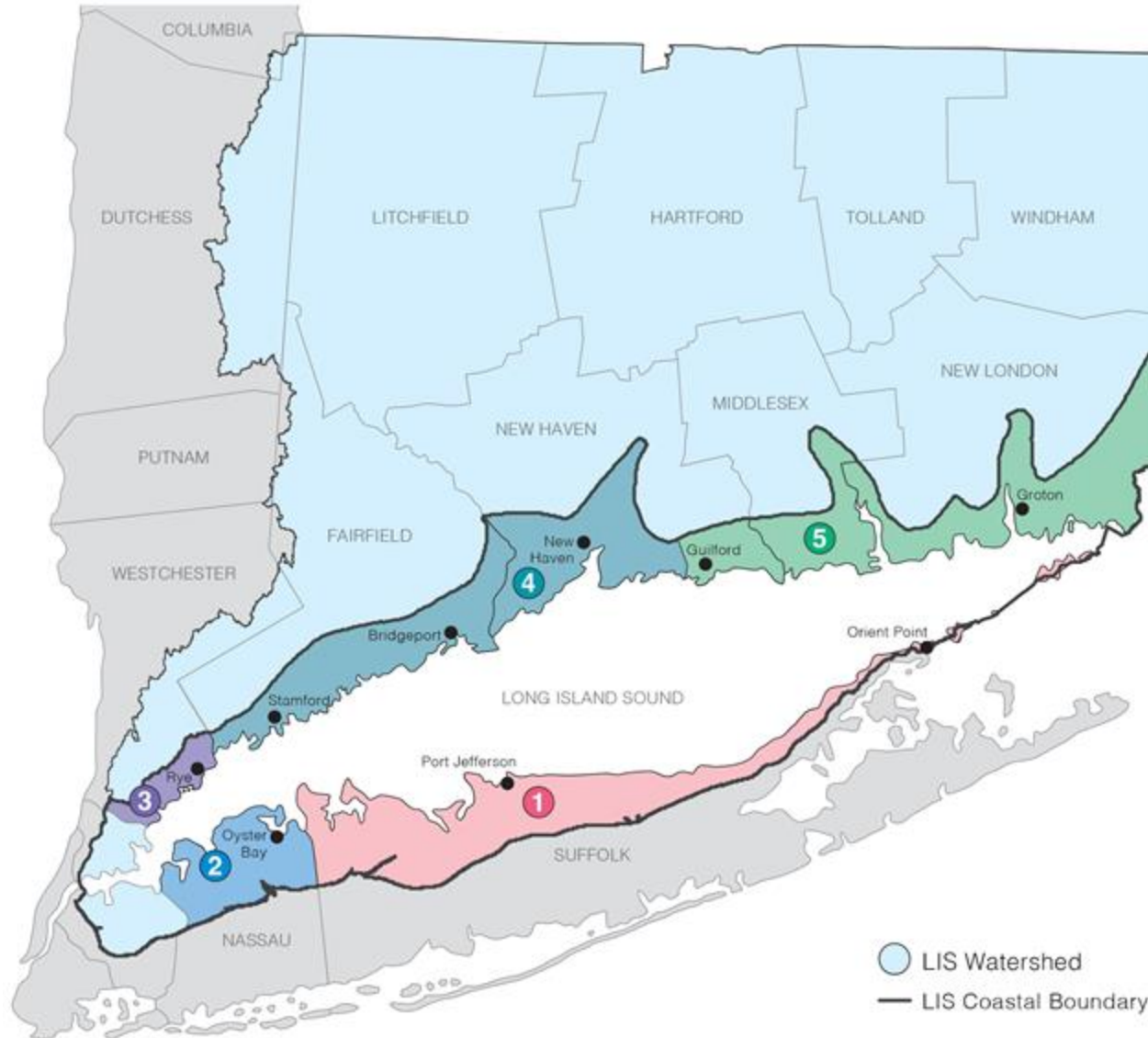
1. Clean Waters and Healthy Watersheds
2. Thriving Habitats and Abundant Wildlife
3. Sustainable and Resilient Communities
4. Sound Science and Inclusive Management



The SRC Extension Professionals Team



Long Island Sound Study
A Partnership to Restore and Protect the Sound



- 1 Suffolk County
Elizabeth Hornstein
- 2 Nassau County
Sarah Schaefer-Brown
- 3 Westchester County
Sara Powell
- 4 Western CT
Deb Visco Abibou
- 5 Eastern CT
Sarah Schechter



A Sustainable and Resilient Long Island Sound Community is one which can anticipate and overcome disturbances, while achieving well-being for all.

Better coordinated regional response

Better trained community decision-makers

Infrastructure improvements planning

Viability of government services

Facilitated implementation

Overarching Themes: Social-ecological Integration & Environmental Justice

LIS Resilience Support Programs



Assist with the development of sustainability and resilience focused projects that will **impact a community(s) within or partially within the Long Island Sound coastal boundary.**



Long Island Sound Study
A Partnership to Restore and Protect the Sound

Track Two

LIS Resilience Grant Writing Assistance Program

Photo credit: Elizabeth Hornstein





Focus: Grant Preparation and Writing Support

Award Amount: Up to \$9,950 per application directly to contractor. Each Application should focus on one discrete project. **Applicants can now submit multiple Applications.**

Match: None required

Eligible Applicants: Municipalities, Community Groups

Application period: Rolling basis until all available funding is allocated

Application Submission Options: Google Form, LISResilience@gmail.com, or via mail

To learn more, visit:





Things to Note:

- Funding is to be awarded **up to \$9,950** per Application. Each Application should focus on one discrete project. **Applicants can now submit multiple Applications.**
- **Grant preparation and writing support activities can now include applying to multiple grant opportunities for a discrete project** identified by the Applicant, but the total award to a given Contractor for that discrete project shall not exceed \$9,950.



- Sustainability/Resilience Plans/Watershed Plans
- Green Infrastructure, stormwater management and low-impact development
- Improvements to infrastructure to increase resilience to sea level rise, storm surge, and intense storms and flooding (Generally excluding repair or construction of seawalls, groins, jetties, and bulkheads)
- Right-Sizing of Culverts/Dam Removal
- Nature-Based Solutions (e.g., living shorelines, wetland restoration, shellfish reef restoration, eelgrass restoration)
- Retreat, Relocation, and/or Land Acquisition to protect habitat in the floodplain
- Public Engagement and Knowledge, relating to the advancement of sustainable and resilient communities



→ Explore our new Funding Database on the LIS Resilience Resource Hub to find open and upcoming funding opportunities!

The screenshot shows the Long Island Sound Resilience Resource Hub website. The header includes the LIS logo, navigation links for Resilience Steps, Resources & Tools, Connect, and a Search function. A large banner features a coastal landscape with a callout box for the 'Funding Database' that says 'Find funding for your project'. Below the banner, there are filter options and a featured grant listing for the 'Grow Grants Program'.

Long Island Sound
Resilience Resource Hub

Resilience Steps Resources & Tools Connect Search

Funding Database
Find funding for your project

Filters
Select one or more of the filters below to find relevant tools and resources for your needs

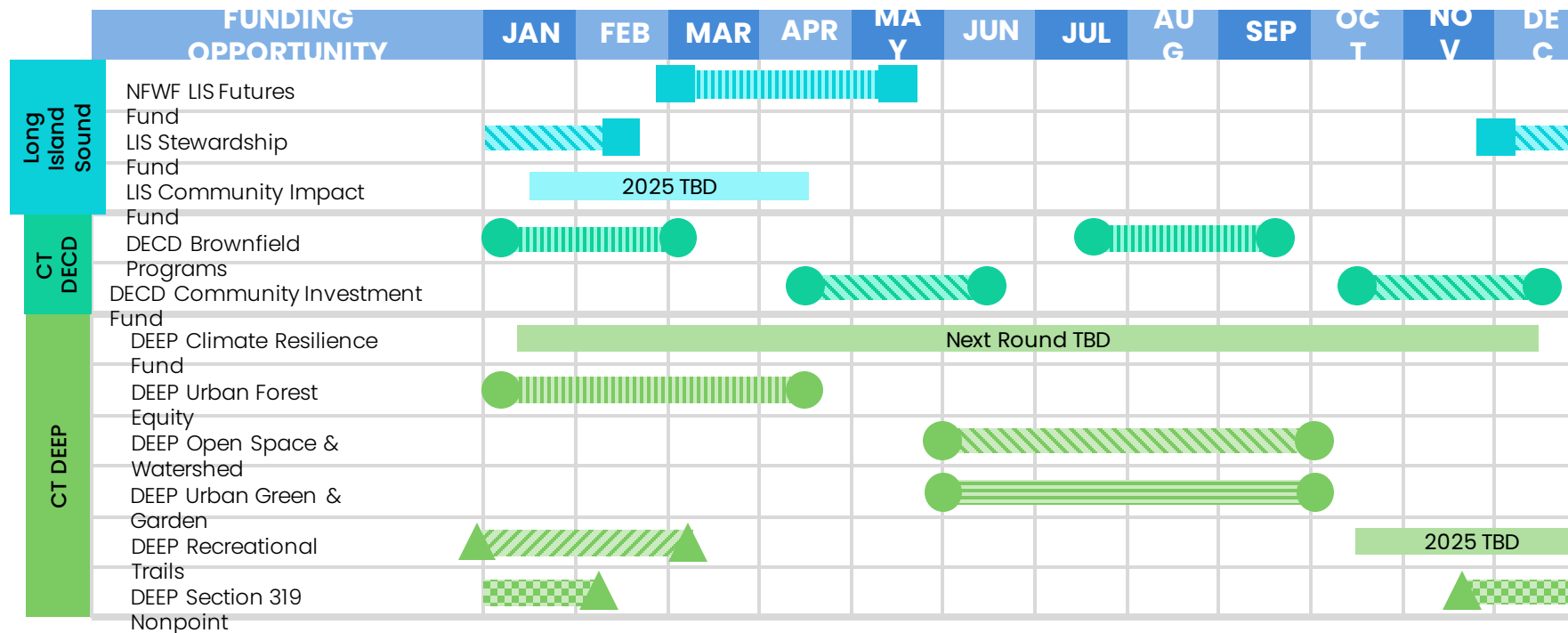
Status
Select a Status

Funding Open: Due on Mar 19, 2024

9 hours
remaining to apply

Grow Grants Program
Awards small grants in support of grassroots efforts and community-based environmental work in New England. The Grassroots Fund utilizes participatory grantmaking to move resources to New England grassroots...

Anticipated RFP Release through Submission (or Pre-proposal) Deadline





Long Island Sound Study
A Partnership to Restore and Protect the Sound

Track One

LIS Resilience Planning Support Program

Photo credit: Sarah Schaefer-Brown





Focus: Planning and Project Scoping Support

Award Amount: No funds are given to the applicants, funds are reimbursed directly to contractor.

Match: None required

Eligible Applicants: Municipalities, Community Organizations

Application period: CLOSED – anticipated Fall 2024

To learn more, visit:





This program aims to help communities assess local climate risks, conceptualize project ideas, and conduct preliminary planning efforts/steps in order to be well positioned to access funding to design and implement successful sustainable and resilience focused projects. This support may include, but is not limited to:

- Climate change risk and/or vulnerability assessment
- Strategy development and project planning
- Project prioritization and funding guidance
- Preliminary community engagement
- Project site feasibility and conceptual design



Q: How do you apply to the LIS Resilience Grant Writing Assistance Program?

A: A: To apply, you may:

- (1) Fill out and submit the online [Application Google Form](#)
- (2) Fill out and attach the [Application Document](#) via email to LISresilience@gmail.com; or
- (3) Fill out and send the Application Document by mail (mailing address on Application).

Long Island Sound Resilience Grant
Writing Assistance Program Application

In order to apply for this funding opportunity applicants are required to submit answers to the below questions. We highly encourage succinct answers. If any information is unknown, we still encourage eligible applicants to apply. Applicants are required to provide information for all of the below sections with the exception of the sections labeled **Optional**. If you have any questions, please email to LISresilience@gmail.com.

scs292@cornell.edu [Switch account](#)

* Indicates required question

Email *

Your email

1. Applicant Information

a. Name of applicant organization or municipality *

Your answer

b. Address of applicant *

Your answer

c. Point of contact: Name, Organization, Mailing address, E-mail address *

Your answer



Q: Is there guidance on how to fill out the LIS Resilience Grant Writing Assistance Program Application?

A: See here for an [example application](#) to the LIS Resilience Grant Writing Assistance Program.

Long Island Sound Resilience Grant Writing Assistance Program Application

In order to apply for this funding opportunity applicants are required to submit answers to the below questions. We highly encourage succinct answers. If any information is unknown, we still encourage eligible applicants to apply. Applicants are required to provide information for all of the below sections with the exception of the sections labeled **Optional**. If you have any questions, please email to LISresilience@gmail.com.

Email *
TownofXXX@gmail.com

1. Applicant Information

a. Name of applicant organization or municipality *
Town of XXX

b. Address of applicant *
100 Smith Street, Town of XXX, NY

c. Point of contact: Name, Organization, Mailing address, E-mail address *
John Smith, Town of XXX, 100 Smith Street, Town of XXX, NY TownofXXX@gmail.com



Q: Are groups outside of the LISS Coastal Boundary able to apply?

A: The project must impact a community (or communities) that are within or partially within the [LISS Coastal Boundary](#). An entity could apply who is outside of this area, but the project would need to benefit a coastal community (or communities) as described above.



Westchester, Bronx, Queens, Nassau, Suffolk counties, western Connecticut, and eastern Connecticut

Track Two: LIS Resilience Grant Writing Assistance Program



Long Island Sound Study
A Partnership to Restore and Protect the Sound

For more information or questions contact:

Michelle MarcAurele

Fiscal Manager - Sea Grant Program

University of Connecticut - Avery Point
1080 Shennecossett Road
Groton, CT 06340

Email: michelle.marcaurele@uconn.edu



Photo credit: Sarah Schaefer-Brown

Questions



Please submit questions in the chat



Deb Visco Abibou

Western Connecticut

Connecticut Sea Grant

deb.abibou@uconn.edu

(203) 407-3166

Sarah Schechter

Eastern Connecticut

Connecticut Sea Grant

sarah.schechter@uconn.edu

(860) 405 9215

For general inquiries: LISResilience@gmail.com

Track Two: FAQ/Application Questions



<p>Applicant Information</p>	<ul style="list-style-type: none"> → Name of applicant organization or municipality → Address of applicant → Point of contact
<p>Grant Preparation & Writing Support</p>	<ul style="list-style-type: none"> → Identify the preferred consultant(s) to work with → Describe the kinds of support activities that are needed through this program → Include a budget and a budget justification
<p>Funding Opportunity</p>	<ul style="list-style-type: none"> → Identify the targeted funding opportunity(ies) → Identify who will receive the funds from the targeted funding opportunity(ies)
<p>Project Description</p>	<ul style="list-style-type: none"> → Project location → Describe how the project will advance sustainability and resilience in a community(ies) within or partially within the Long Island Sound Coastal boundary and address environmental justice concerns → Identify the project type and associated activities or desired outcomes for which funding is needed → List the Project Team, including lead applicant and any co-applicants → <i>Describe any community or stakeholder engagement to date regarding this project (Optional)</i> → <i>Describe any relevant grant application history (Optional)</i>



Q: Is there a list of Contractors?

To successfully apply for the LIS Resilience Grant Writing Assistance Program an applicant will need to identify the grant opportunity and consultant or Contractor they wish to work with.

A: See here for a [Contractors List](#). This document is intended to assist interested applicants by providing a list of Contractors available for grant preparation and writing support in New York State and Connecticut.

This is not an exhaustive list, and Contractors may be added to the list frequently. Applicants do not have to select a Contractor from this list. It is the responsibility of the applicant to talk with one or more Contractors to determine the best fit for the project.



Q: Do I need an official quote from my contractor?

A: Yes. You must include a budget and a budget justification (i.e. a quote outlining number of consultant hours and hourly rate) in the application.

In order for your application to be complete you must send in an official quote from the Contractor to LISresilience@gmail.com. See here for an [example quote](#).

Contractor Name:			
Contractor Address & Email Address:			
Client Name:			
Client Address:			
Description of Services to be Rendered:		Grant Writing	
Date of quote:		INSERT date	
Grant Opportunity:		INSERT Name	
Grant opportunity deadline:		INSERT deadline	
ITEM:	RATE (\$/hour)	# HOURS:	COST:
Preparation/Development of grant application documents/materials:			
Review RFP, Topical Research & Grant Background (Info Gathering, Webinars, etc)			
Budget & Project Plan Development			
Writing (Narrative Sections)			
Revision Rounds			
Finalize & Submit Application			
TOTAL:			



Q: Can applicants list multiple grants they will apply to?

A: Yes. An application should focus on one discrete project identified by the applicant. Grant preparation and writing support activities can include applying to multiple grant opportunities for a discrete project identified by the applicant, but **the total award to a given Contractor for that discrete project shall not exceed \$9,950.**



Q: Can you apply for multiple project opportunities?

A: Yes. Funding is to be awarded up to \$9,950 per application, but applicants can submit multiple applications. Each application should focus on one discrete project.



Track Two: Information for Contractors



If you or your organization is interested in providing grant preparation and writing support services to LIS Resilience Grant Writing Assistance Program applicants, please fill out and submit this [Contractor Interest Form](#).

Your information will be included on the potential [Contractors List](#) for applicants to review when thinking about selecting a Contractor to work with.

LIS Resilience Grant Writing Assistance - Contractor Interest Form

With funding from US EPA through the Long Island Sound Study (LISS), New York Sea Grant (NYSG) and Connecticut Sea Grant (CTSG) announced updates to the Long Island Sound Resilience Grant Writing Assistance Program on October 16, 2023 . The applicant will need to identify a selected grant preparation and writing support Contractor in the application.

If you or your organization is interested in providing these services, please fill out and submit the form below. If appropriate, your information will be included on a Contractor List for applicants to review when thinking about selecting a Contractor to work with.

All selected Contractors will need to register with the appropriate institution. For information review the LIS Resilience Grant Writing Assistance Program RFP. For more information contact: LISresilience@gmail.com

scs292@cornell.edu [Switch account](#)

* Indicates required question

Email *

Your email

Name of organization *

Your answer

Point of contact name *

Your answer

Mailing address *

Your answer



Attention Applicants and Selected Contractors

To reduce the amount of time between the award and contract through this funding opportunity, potential grant preparation and writing support Contractors are encouraged to register as a vendor with UConn. This may be done advance of an application submission.

- 1. Review requirements with purchasing procedures used by The University of Connecticut:**
<https://purchasing.ubs.uconn.edu/vendor-guide/>
- 2. If not previously registered with UConn, the selected Contractor will receive an email invitation to register.** A PO cannot be issued until the supplier registration process is complete.
- 2. Upon completion of services, the Contractor will be instructed to submit an invoice per the instructions of the PO.**

PUBLIC COMMENT



To participate:

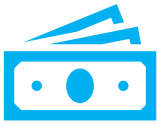
1. Use the "Raised Hand" function on the bottom of your screen
2. When called upon, unmute yourself
3. State your name and affiliations

Please limit your comments to 3 minutes

CONNECTICUT'S BEAD CHALLENGE PROCESS

BROADBAND EQUITY, ACCESS, AND DEPLOYMENT PROGRAM

Learn more: portal.ct.gov/deep/energy/broadband-deployment/bead-program



The Challenge Process is vital because it determines the locations and community anchor institutions within each jurisdiction that are eligible for \$144 million in BEAD funding.



The State will use the National Broadband Map as a starting point to identify the list of BEAD-eligible locations within its jurisdiction.



DEEP will review and potentially modify the designation of a location as served, underserved or unserved on the National Broadband Map through the challenge process.

Eligible Challengers:

- Local Governments
- Tribal Governments
- Nonprofits
- Broadband Service Providers

Challenge Phase

April 1 – April 30

Rebuttal Phase

May 11 – June 10

Final Determinations Phase

June 11 – July



Contact us at: DEEP.CEEJAC@ct.gov

Join the DEEP Equity & EJ Office Hours every third
Wednesday from 12-1pm on
Zoom: <https://ctdeep.zoom.us/j/88627382456>

Next CEEJAC Quarterly Meeting: June 2024

THANKS!