

CEEJAC

LAND SUBCOMMITTEE

CHAIR: YAW DARKO, CT LAND CONSERVATION COUNCIL | FEBRUARY 22, 20234



WELCOME & ROLL CALL

Welcome – Yaw
Darko, CT Land
Conservation
Council, Chair

TERRY ADAMS

ALEX RODRIGUEZ

SHARON LEWIS

GUSTAVO REQUENO SANTOS

KATHY CZEPIEL

REGINALD SAINT FORTCOLIN

ANNA PICKETT

LETICIA COLON DE MEJIAS

AGENDA

- Welcome & Roll Call - Yaw Darko
- Meeting Ground Rules
- Presentation on the State Conservation & Development Plan - Office of Policy Management
- Announcements
- Upcoming Meetings

**PUBLIC COMMENTS WILL BE ACCEPTED
THROUGHOUT THE MEETING**

MEETING

GROUND RULES

During the discussion, all members should:

- **Listen respectfully, without interrupting**
- **Listen actively and with an ear to understanding others' views**
- **Only have one conversation at a time**
- **Be mindful to give others the opportunity to speak**
- **Focus on the task at hand rather than the position**

- **Avoid off-topic conversations**
- **Criticize ideas, not people**
- **Commit to learning, not debating**
- **Avoid blame, speculation and inflammatory language**
- **Avoid assumptions about any member of the group**

PRESENTATION ON:

STATE CONSERVATION & DEVELOPMENT PLAN

By the Office of Policy Management

Connecticut Conservation and Development Policies Plan 2025-2030

CEEJAC Land Subcommittee Meeting

February 22, 2024

Today's Meeting

- Why we're here
- Overview of draft C&D Plan
- Discussion & Feedback
- Next steps and how to stay involved

Why are we here?

The Office of Responsible Growth (ORG), working with the Continuing Legislative Committee on State Planning and Development (Continuing Committee) and state agencies is drafting the 2025-30 State Conservation and Development Policies Plan (C&D Plan)

Wanted to meet with the CEEJAC Land Subcommittee to:

- Review the C&D Plan, which is intended to guide state agency land use decisions
- Garner insight and check our blind-spots
- Ensure environmental justice issues are considered by all state agencies via the C&D Plan

Office of Responsible Growth

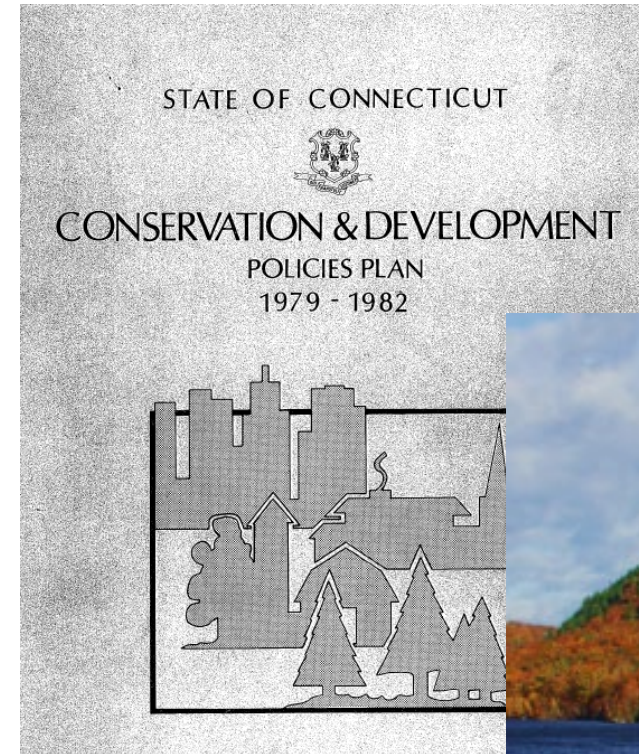
- Unit within the Office of Policy and Management
- Established by Section 17 of [Public Act 23-207](#) as a successor to [Executive Order #15](#)
- Coordinate state efforts around land use and planning to encourage the creation of livable, diverse and economically strong communities, while protecting our natural, economic and social resources for future generations.

What is the C&D Plan?

- An overarching plan that establishes common goals and priorities for all state agencies, adopted by CT General Assembly
- Intended to guide state plans, programs, and investments
- Required by Chapter 297 of the Connecticut General Statutes to address a host of conservation and development factors
- Developed by OPM and the Continuing Committee for adoption by the CT General Assembly
- Different from municipal plans of conservation and development – not site-specific

Shifting into the 2025-2030 C&D Plan

- A State C&D Plan has been legislatively adopted 1979
- Since 2013, the C&D Plan has been structured around six Growth Management Principles, that created a siloed implementation approach
- The 2025-2030 C&D Plan will be structured differently, shifting towards more holistic implementation mechanisms that emphasize equity



2025-30 C&D Plan Process Thus Far

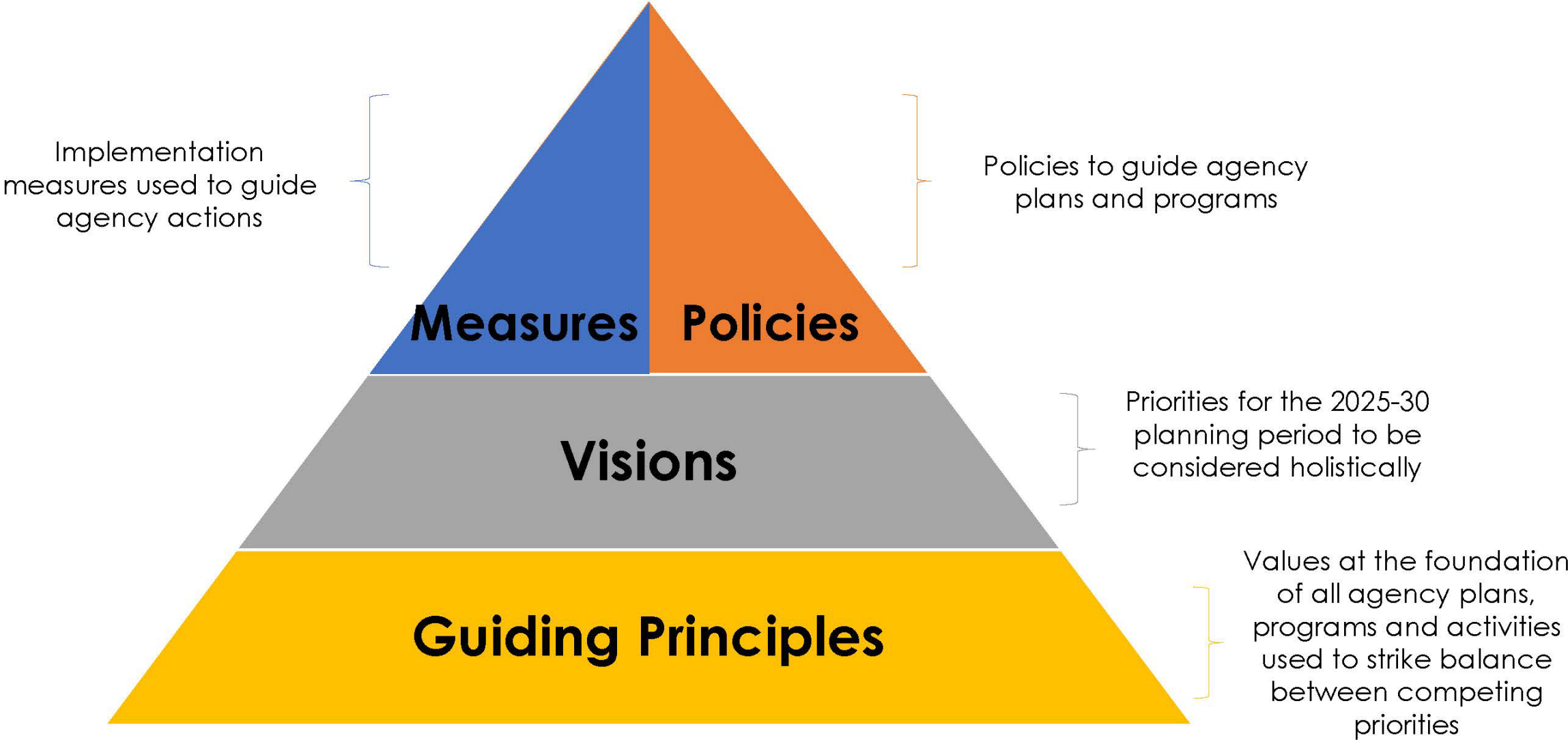
Review of state agency plans
and programs

Held 4 virtual public outreach
sessions and gathered feedback in
Fall 2023

Developed first and second drafts
with Continuing Committee and
agencies

Posting Draft C&D Plan for public
comment on March 1st

Structure of the 2025-30 C & D Plan



Draft Guiding Principles



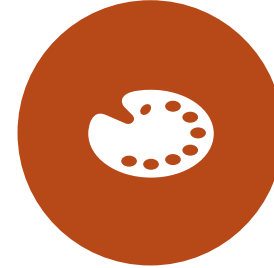
SUSTAINABLE

Balance the ecological, social, and economic dimensions of conservation and development to meet current needs without compromising the future. This entails protecting, preserving, and conserving our natural resources, efficiently and responsibly using our economic and human resources, and achieving and maintaining social wellbeing.



EQUITABLE

Ensure a high quality of life and opportunity for people of any income, race, ethnicity, religion, gender, ability, or age. This requires reducing disparities in outcomes, access, and opportunities, minimizing environmental, public health, and other burdens, and extending community benefits.



VIBRANT

Create and maintain culturally, economically, and physically diverse communities and an innovative, thriving statewide economy. This involves cultivating diverse businesses in type, size, and ownership, and creating, preserving, and promoting distinct communities and regions and their unique mixes of historic, natural, cultural, and social features.



RESILIENT

Develop and maintain the capacity to prepare for, recover from, adapt to, and thrive in changing and disruptive conditions. This demands that Connecticut understand, avoid, and/or reduce a variety of environmental, economic, public health, and social well-being risks, build technical, staffing, fiscal, and other capacity to implement resilience measures and capitalize on opportunities to provide multiple resilience benefits.

Draft Vision Statements

Thriving Economy

Housing for Current and Future Residents

Stewardship of Resources

Healthy People and Places

Connected and Inclusive Communities

Vision Statements in Action

Five equally prioritized Visions, each include:

- A defining *vision statement* that summarizes the goal of each Vision area
- *Targets* within each Vision area for agencies to direct their plans, programs, and investments towards
- Brief discussions of current *strengths* and *challenges* within each Vision area that inform the targets.

A THRIVING ECONOMY

Connecticut will have a flourishing and diverse economy that leverages our strategic location, existing infrastructure, and natural and cultural assets.



Targets

To accomplish this Vision, state agencies will direct plans, programs, and investments towards:

- Promoting infill development and redevelopment in areas with existing supportive infrastructure
- Promoting compact, pedestrian-oriented, mixed use development patterns around existing and planned public transportation
- Improving transit services to provide convenient, reliable, safe, and competitive transportation choices
- Reducing economic disparities among residents, neighborhoods, and communities
- Ensuring high quality opportunities for all residents to participate in the economy
- Creating and maintaining a diverse mix of economic activities within and across economic sectors
- Maintaining a resilient and adaptable workforce
- Promoting regional collaboration and coordination in growing, retaining, and attracting businesses and talent
- Recognizing the economic impacts of CT's tribes, and protecting and celebrating tribal culture
- Improving statewide energy resilience
- Pursuing greenhouse gas emission reduction strategies

Current Strengths

- Significant recent and ongoing federal investments in infrastructure, including \$5.4 billion in roads, bridges, public transit, ports, and airports; approximately \$200 million in clean water and water infrastructure; and \$230 million in broadbandⁱ
- Strategic location in the Northeast Megaregion provides ready access to major markets and financial centers
- 5th highest state gross domestic product per capita in 2022ⁱⁱ
- Robust education systems and 7th most highly educated adult populations in the nation (2022 ACS 1-Year dataⁱⁱⁱ)
- Estimated \$954 million in expenditures by Arts and Culture Organization and their Audiences in FY 2022.^{iv}
- Agricultural cash receipts of approximately \$590 million in 2021, with miscellaneous crops, floriculture, and dairy products the leading commodities.^v
- Abundance of natural resources and historic, cultural, and creative assets provide a high quality of life

Current Challenges

- High cost of living and lack of affordable housing^{vi, vii}
- An older population than many other states, with sluggish total population growth since 2010^{viii, ix}
- 2nd in the nation for income inequality among states^x
- Climate risks to businesses, housing, and infrastructure^{xi}
- Condition and capacity of infrastructure to support growth^{xii}

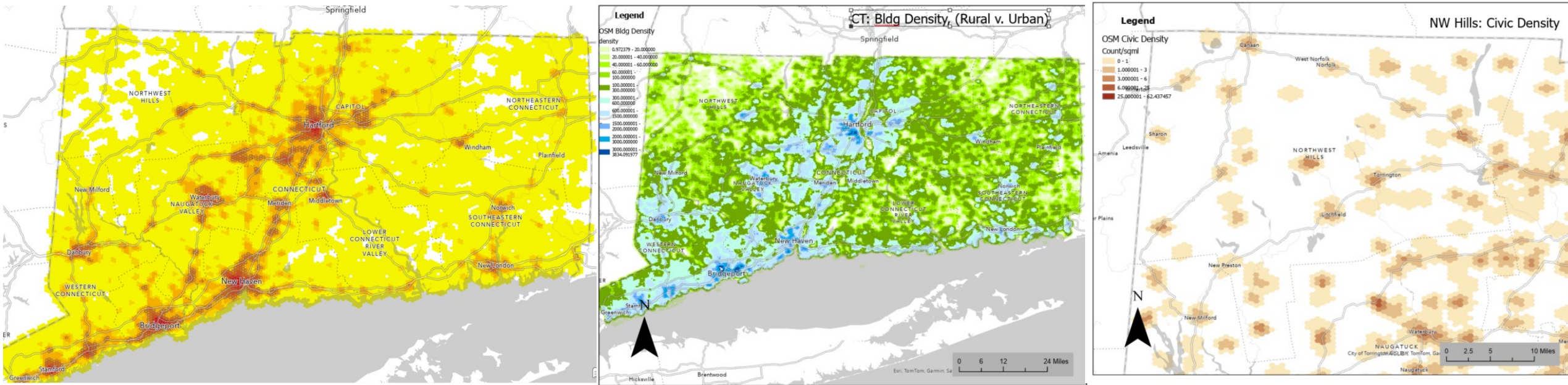
Policy Statements

1. Seek multiple benefits and create efficiencies across agencies to optimize the use of state resources in conservation and development initiatives.
2. Leverage federal and private resources to support programs and projects that balance priorities.
3. Encourage planning and preliminary phasing among partners in conservation and development to advance well-balanced projects for potential state investment.
4. Develop greater capacity to govern, develop, leverage, and use existing data.
5. Promote regional solutions to conservation and development and in the efficient use of limited resources.
6. Clearly communicate priorities horizontally and vertically within and across agencies.
7. Seek out and facilitate meaningful engagement with diverse stakeholders.

Proposed Plan Implementation

- Establish an ad hoc C&D Plan Advisory Committee of state agency staff to:
 - Review and evaluate opportunities for interagency efforts and integration of resources
 - Consult with OPM on the development of Plan consistency reporting documentation
 - Regularly update the Ongoing Initiatives and Resources Appendix A
 - Provide a forum for developing approaches to balance conflicting conservation and development priorities
- Regular engagement with Continuing Committee during implementation – suggest annual meeting
- Amend CGS 16a-31 increase from \$200,00 to \$1,000,000 the value of agency actions affecting property that need to be consistent with the C&D Plan and require that agencies document and transmit to OPM their determination of consistency with the Plan's implementation measures, in a manner to be developed

Mapping Activity Centers



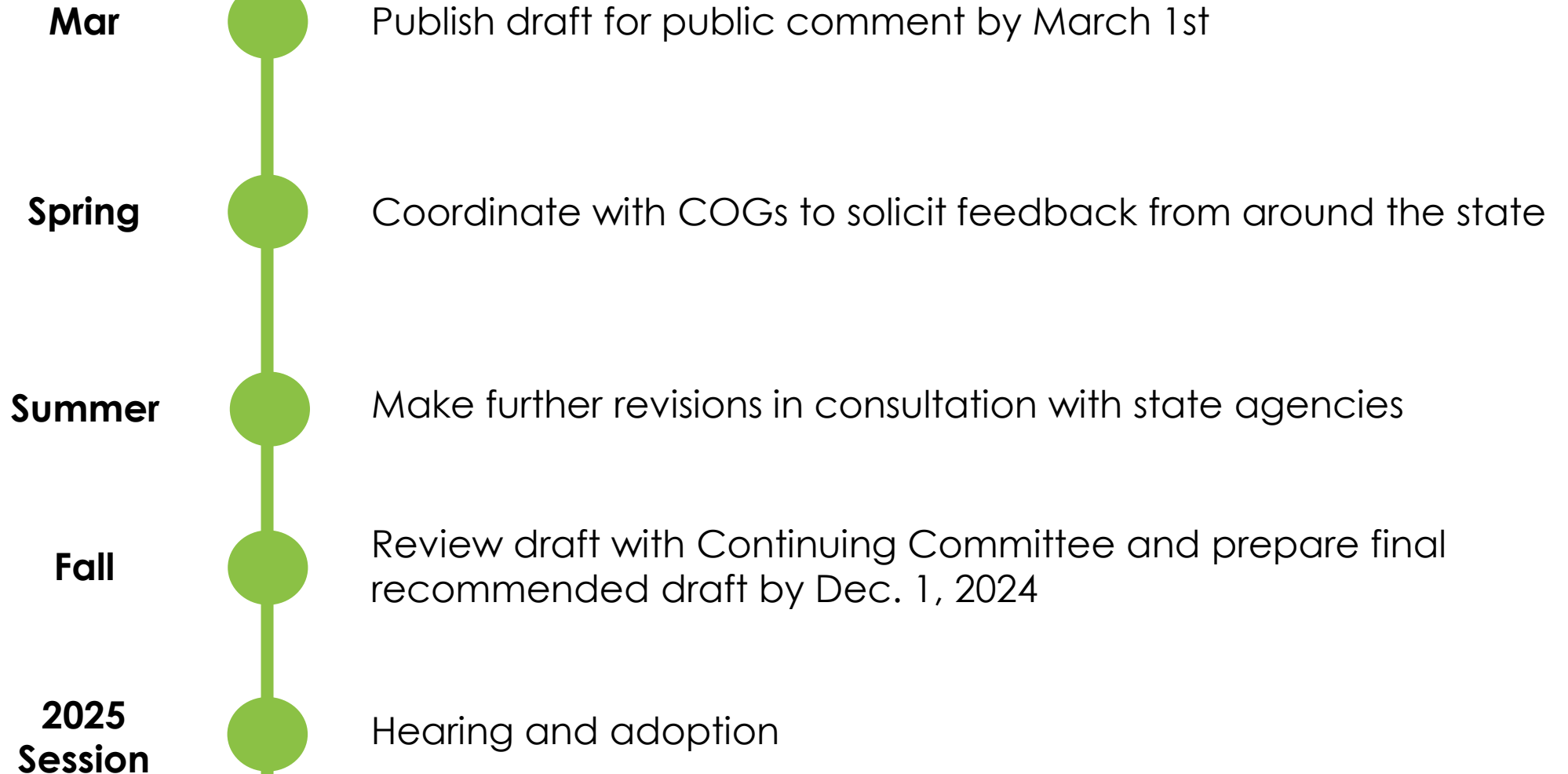
- Mapping in the C&D Plan: required by statute – shifting this approach to align with changes within the written plan to identify overlaps in activity types
- Acknowledging different approaches for rural vs. urbanized areas
- Applying Environmental Justice Communities Overlay to series of mapping

Discussion & Feedback



Windsor Locks Canal, Courtesy Connecticut Department of Transportation.

Next Steps



Second Draft

January 2024 draft of the 2025-2030 State C&D Plan



Website

<https://storymaps.arcgis.com/collections/7ce949e7bdd341c689f2cee82d34f3f8>

A large green circular graphic on the left side of the slide, partially cut off by the edge.

Contact Us!

**For Feedback & Inquiries about the
2025-2030 C&D Plan**

Email: OPM.CD.Plan@ct.gov

Website: https://bit.ly/OPM_CD_Plan

ANNOUNCEMENTS, UPDATES, & EVENTS



MON MAR 18, 2024

6:00-8:00 PM

CEEJAC QUARTERLY MEETING

THURS APRIL 4, 2024

1:00-3:00PM

PUBLIC CEEJAC LAND
SUBCOMMITTEE MEETING ABOUT
OPEN SPACE AND WATERSHED
ACQUISITION GRANT PROGRAM

THURS APRIL 18, 2024

1-3PM

CEEJAC LAND SUBCOMMITTEE
MEETING (MEMBERS ONLY)
ABOUT OPEN SPACE AND
WATERSHED ACQUISITION
GRANT PROGRAM

UPCOMING
MEETINGS



THANKS!