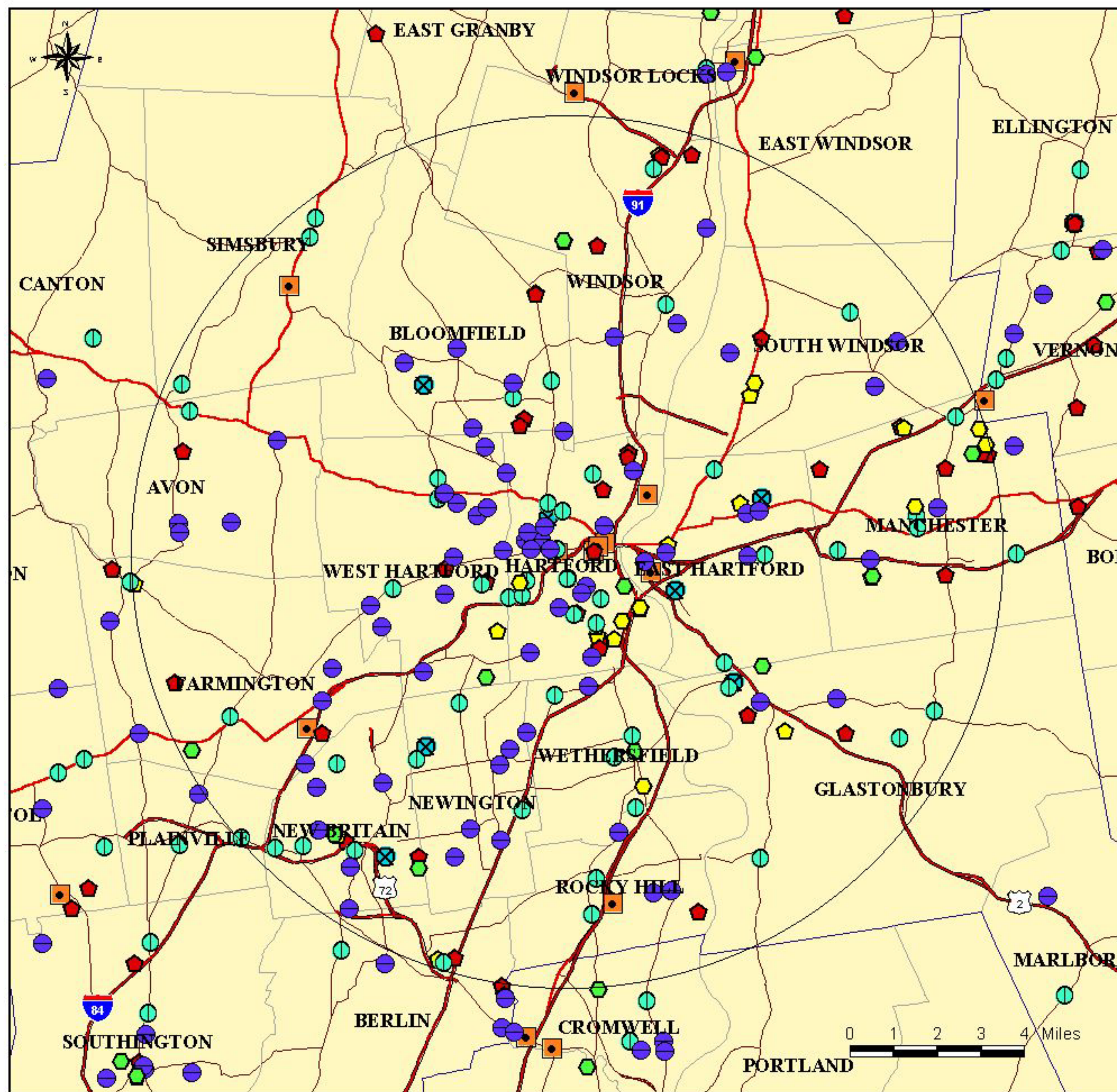
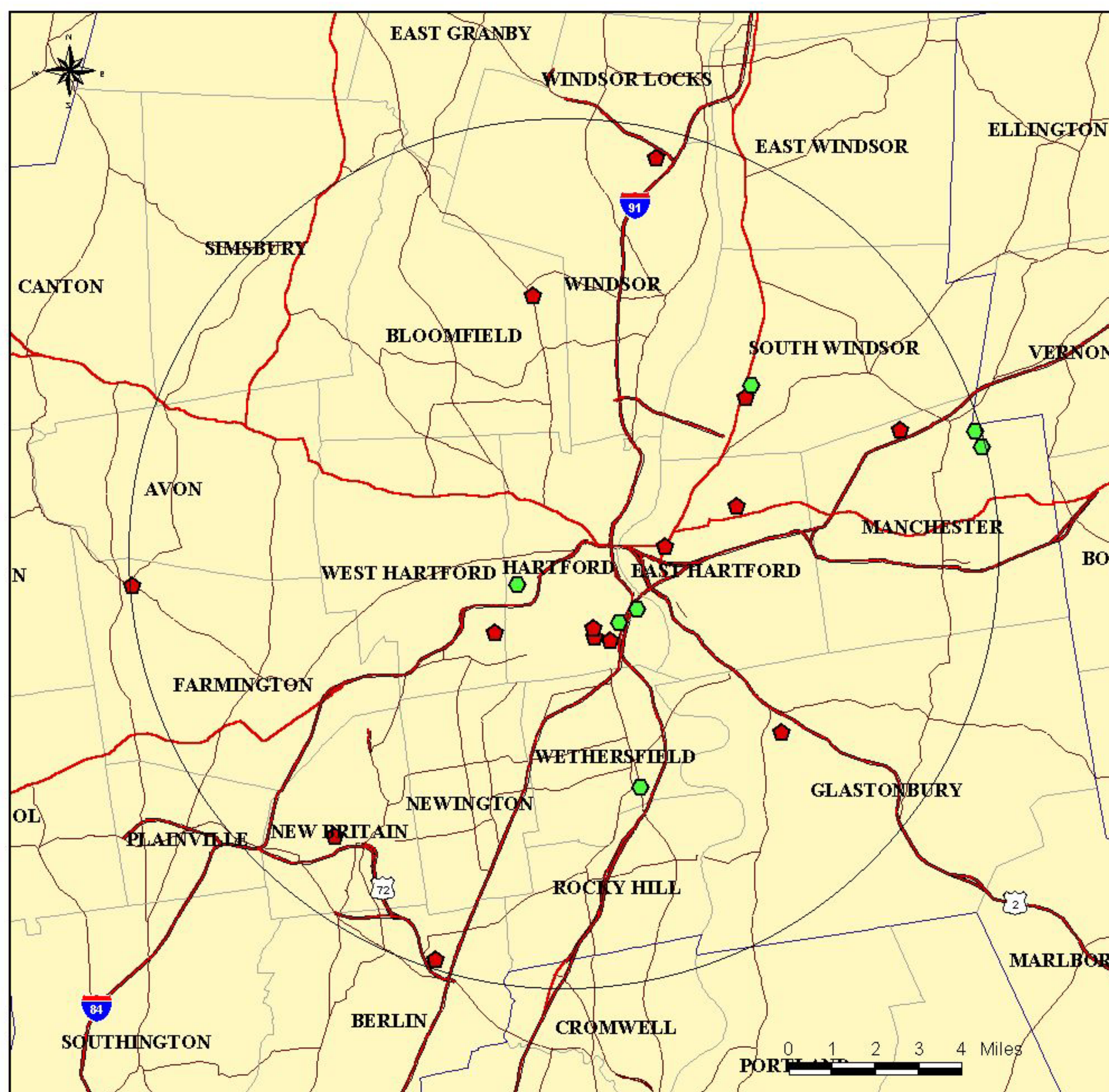


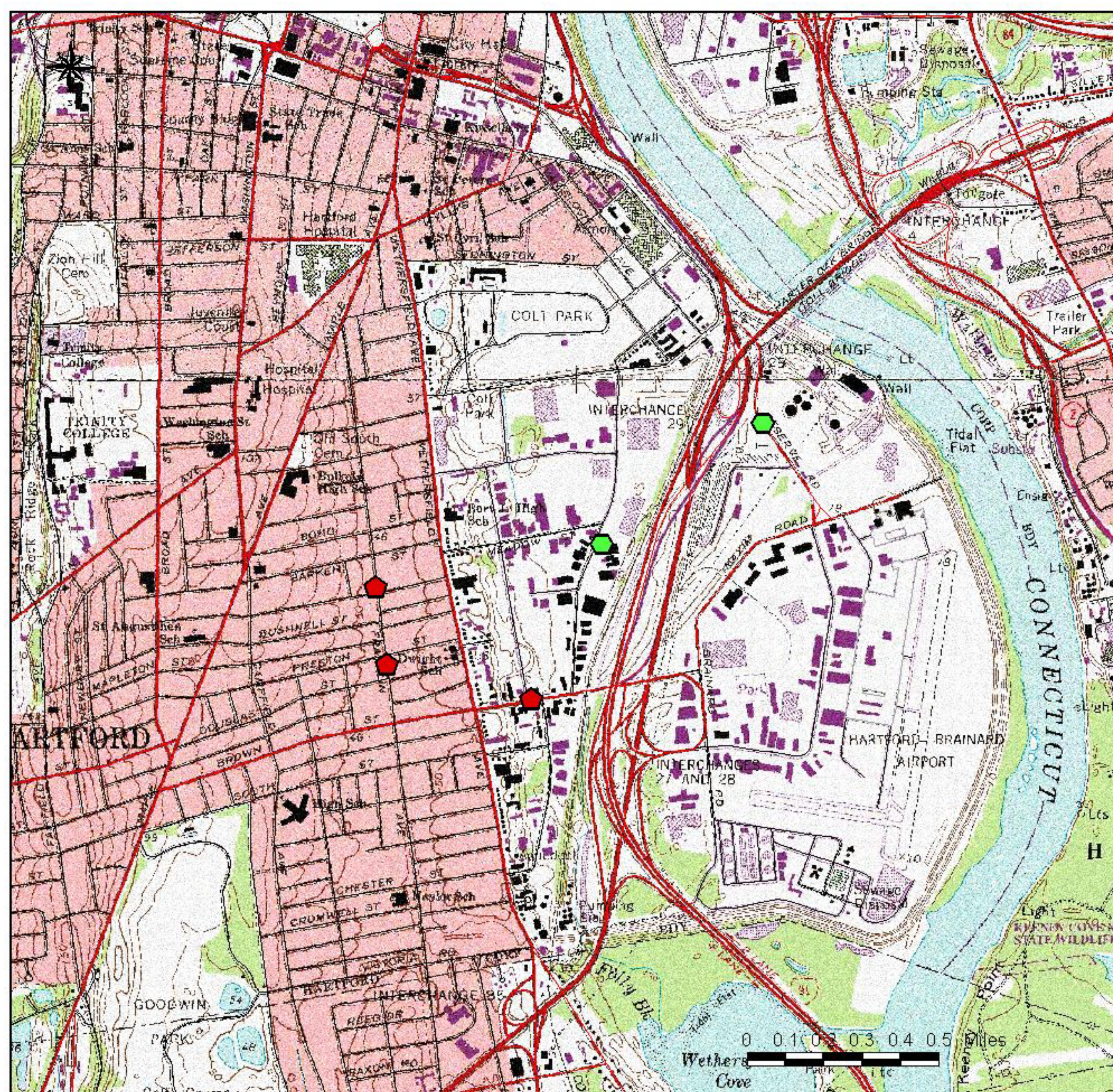
1) By using the <Select Features By Using Graphic> GIS tool, all of the generators located within 10 miles of the center of Hartford are selected. Selected features are highlighted in yellow.



2) Of the generators within 10 miles of the center of Hartford, those that produce vegetable and bakery waste are selected. This is done by querying the 'Waste Types' database field for entries containing 'V', for vegetable, or 'B', for bakery.



3) To select the larger waste producers from this selected group, the 'Sales Code' is queried for generators that have greater than \$1 million per year in sales.



4) Larger scale views can be used to identify transportation routes. The information for the selected generators can be viewed digitally, exported to spreadsheets or directly printed from the GIS software.

This map is one of fourteen maps that were produced as part of a report titled, "Identifying, Quantifying, and Mapping Food Residuals from Connecticut Businesses and Institutions. An Organics Recycling Planning Tool Using GIS", September 2001, funded by the Connecticut Department of Environmental Protection (CTDEP), and prepared by Draper/Lennon Inc. and Atlantic Geoscience Corp. The SSOM generator locations were derived from address matching with geo-coded street data. CTDEP GIS basemap data was used for political boundaries and detailed road maps. Small scale roads were selected by size from the 1994 TIGER roads data. Large scale roads (1:24,000+) were obtained by the CTDEP GIS Center. Generator data were obtained between October 2000 and May 2001, using existing databases, surveys and direct contact.

Explanation	
Organic Waste Generators	
	Beverage Manufacturer
	Food Manufacturer
	Supermarket
	Institution
	Resort/Conference Facility
	Wholesale Distributor

Map 14 Example of Database and GIS Query Capabilities

Source-Separated Organic Materials (SSOM) Generator Locations

Connecticut Department of Environmental Protection

This example query was designed to identify all organic waste generators within ten miles of the center of Hartford that produce vegetable and bakery waste, and typically exceed \$1 million per year in sales.