



Connecticut Department of Energy and Environmental Protection

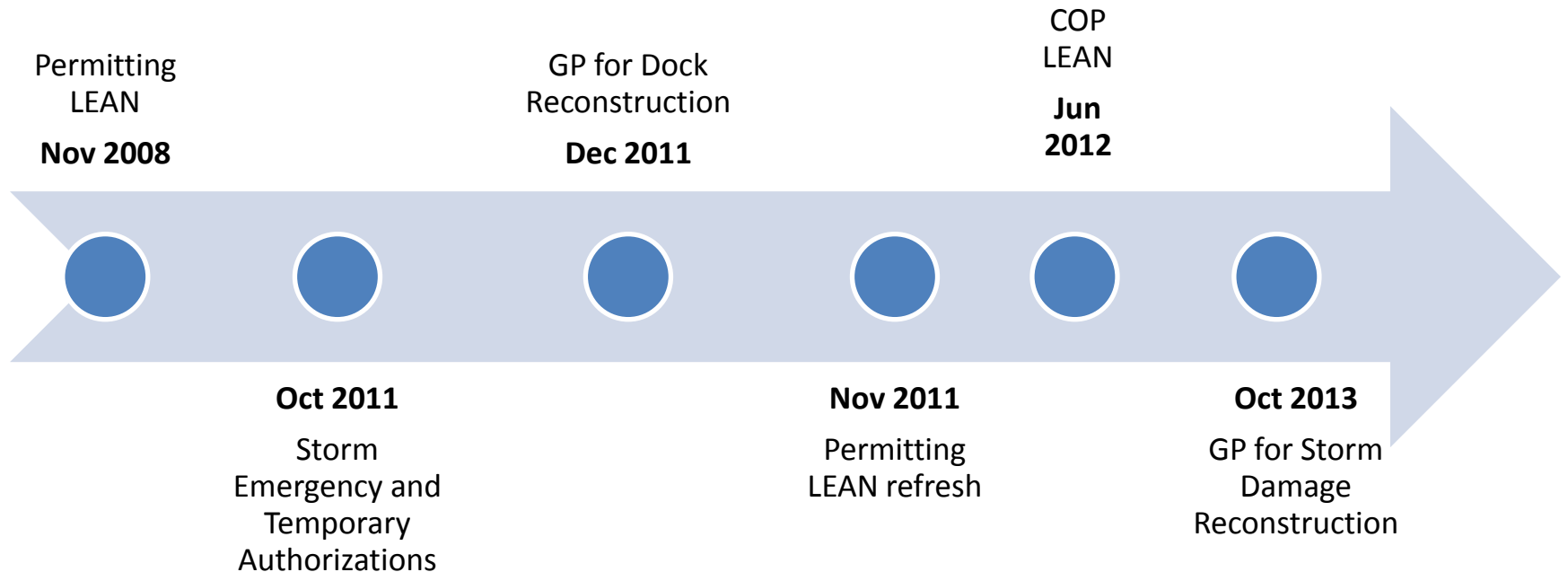


February 13, 2013

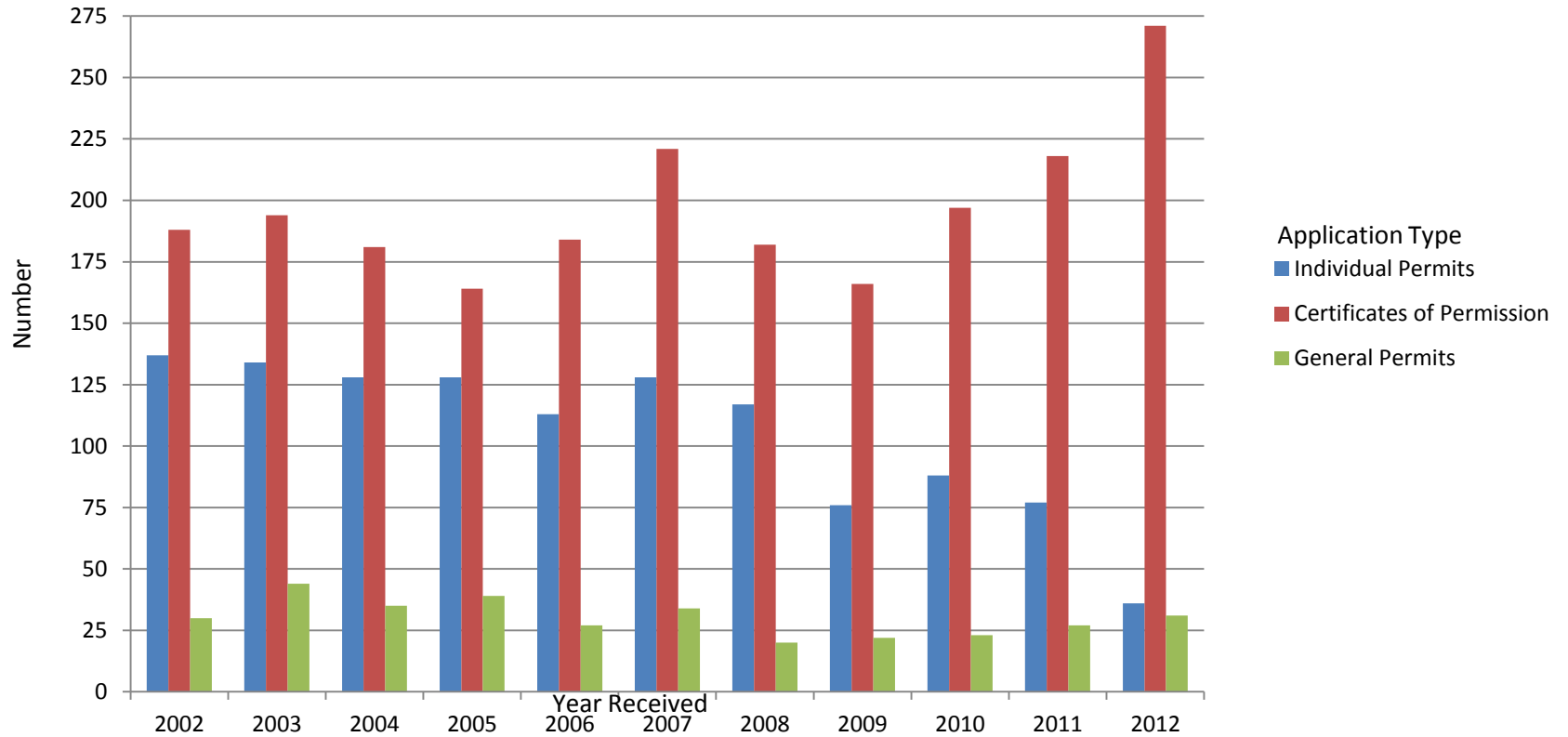
Testimony of Commissioner
Daniel C. Esty
before the
Shoreline Preservation Task Force

*Supporting graphs, charts and figures on
coastal permitting and regulatory boundaries*

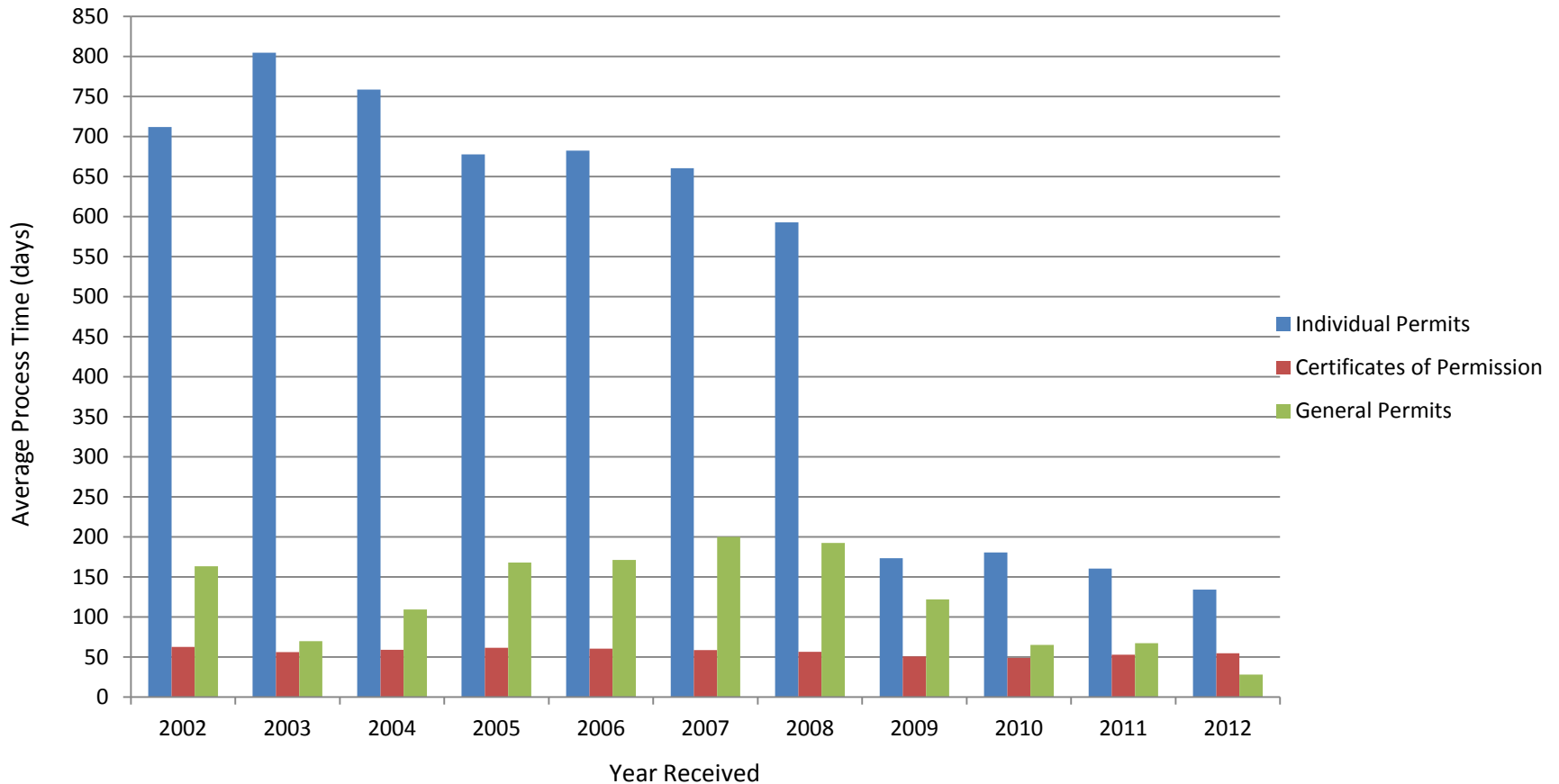
Coastal Permitting Continuous Improvement Milestones



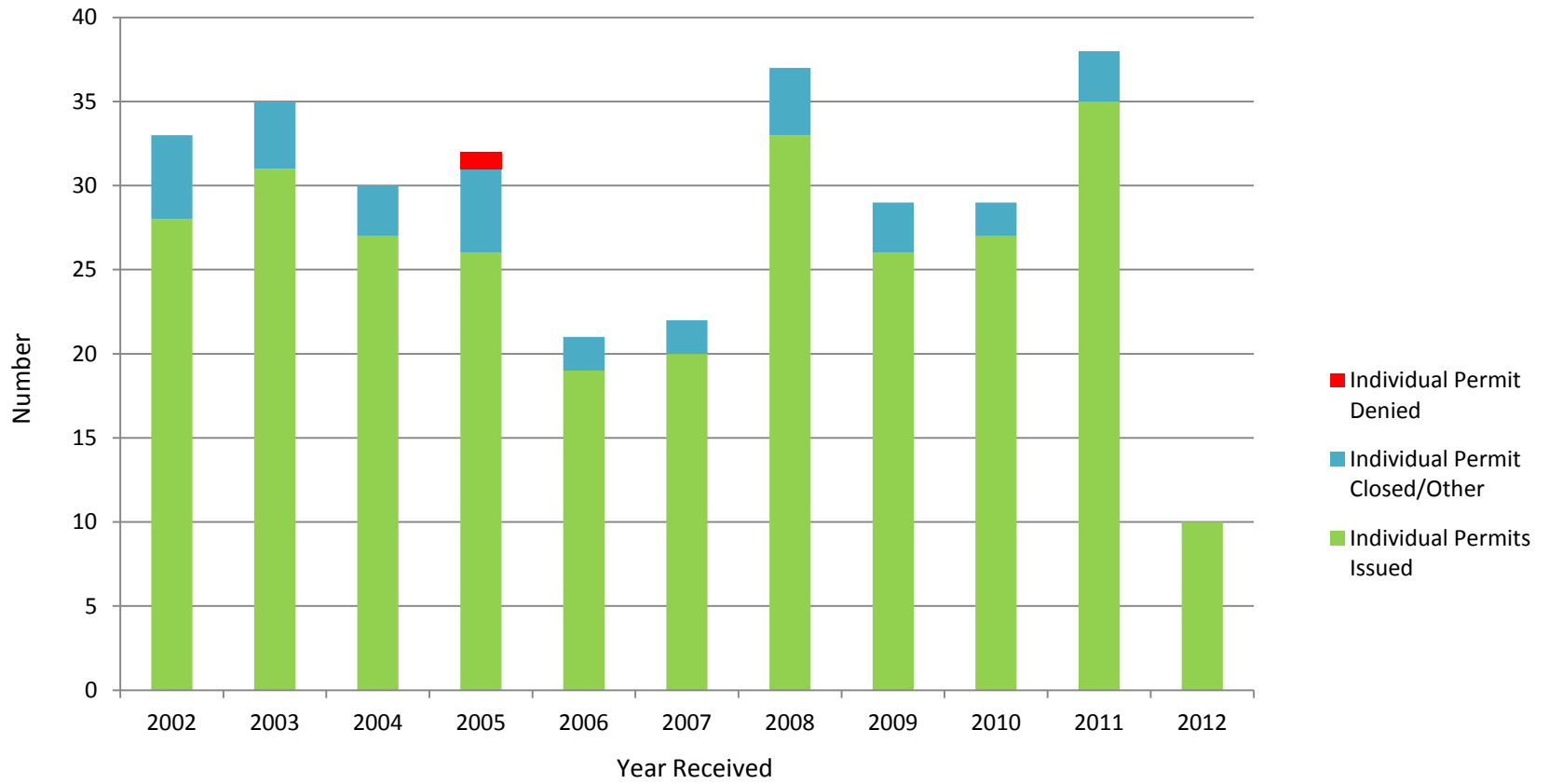
Total Number of DEEP Coastal Applications Processed 2002 - 2012



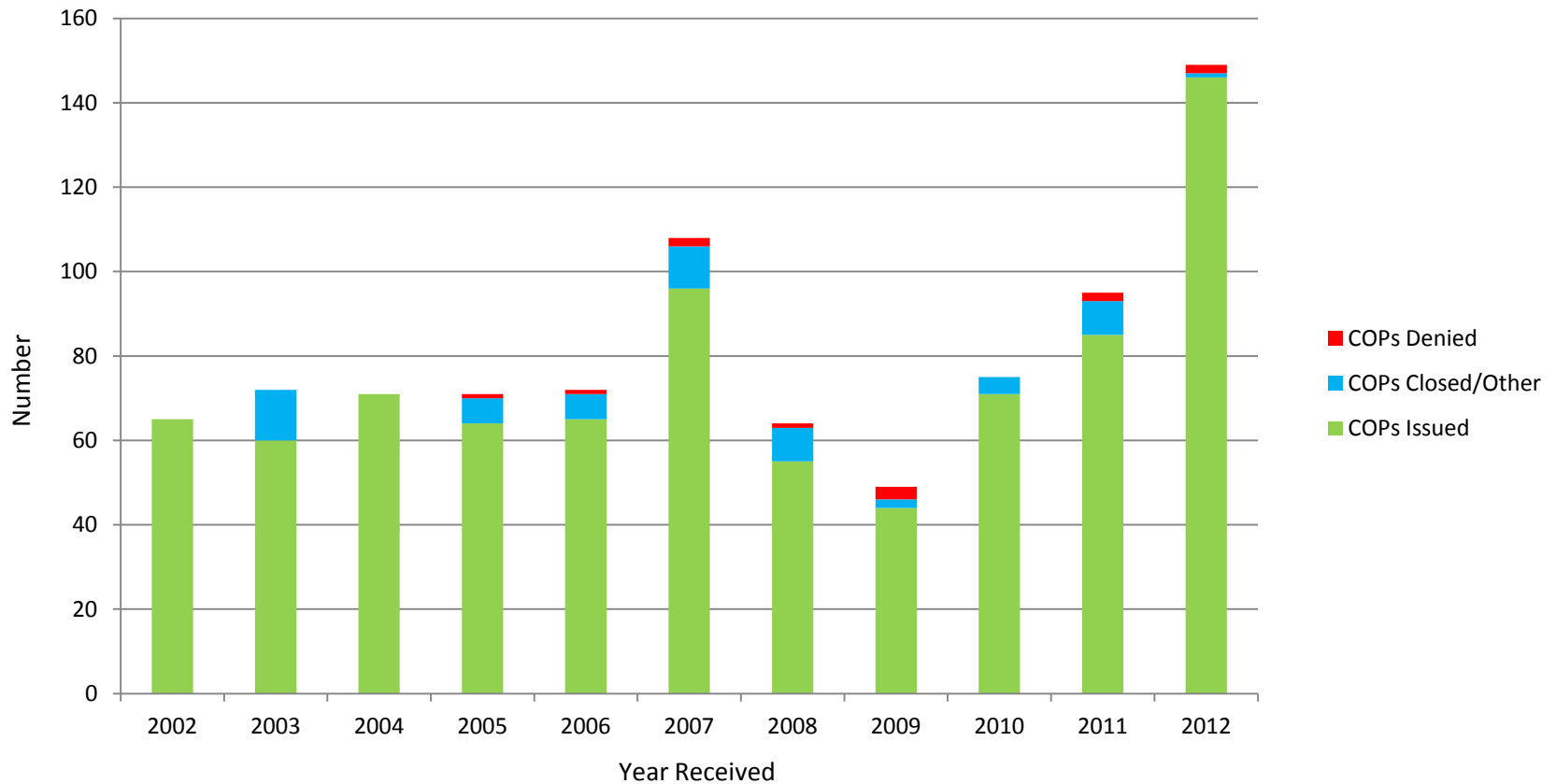
Average Process Time for DEEP Coastal Applications 2002 and 2012



DEEP Permit Applications for a Flood and Erosion Control Structure from 2002 to 2012

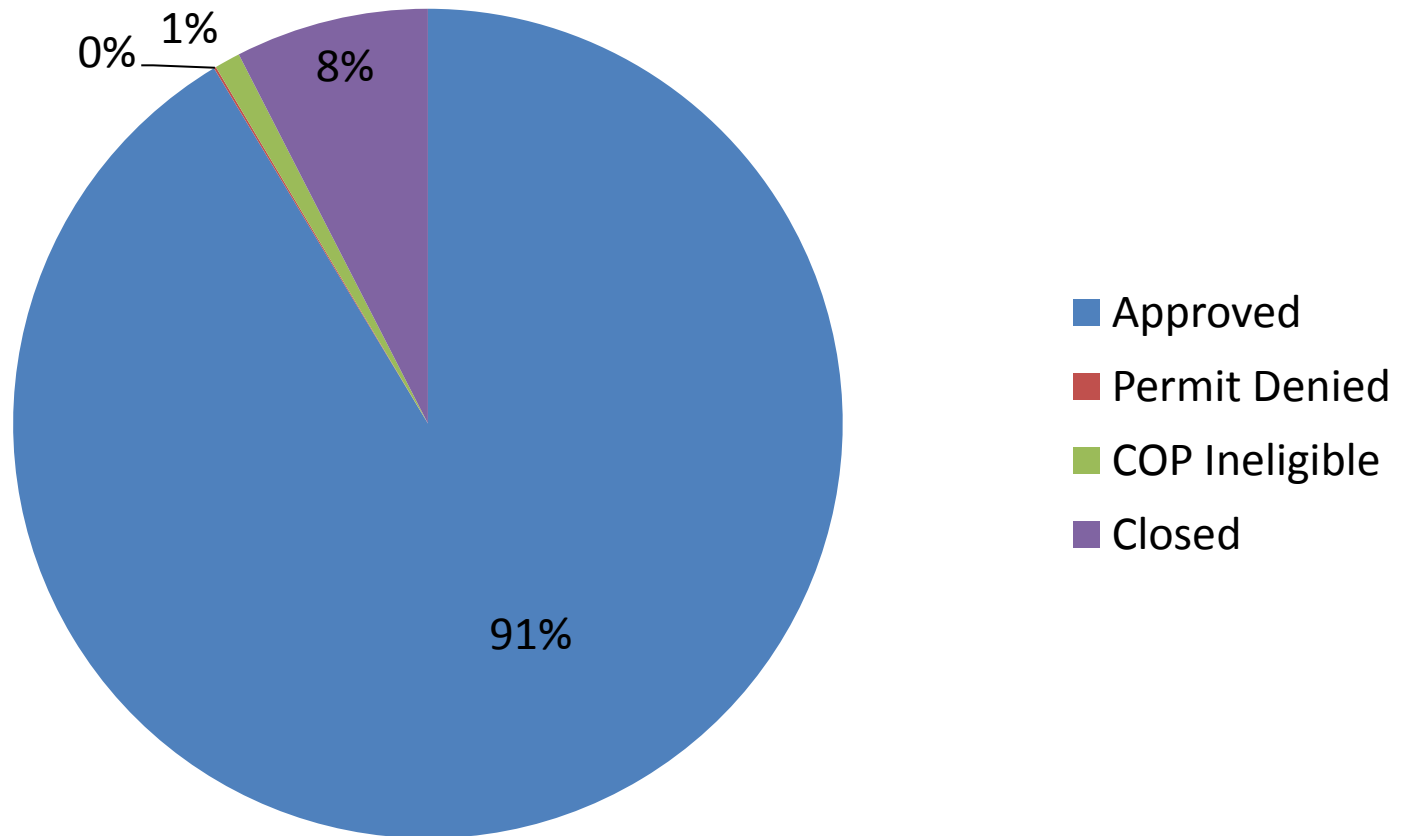


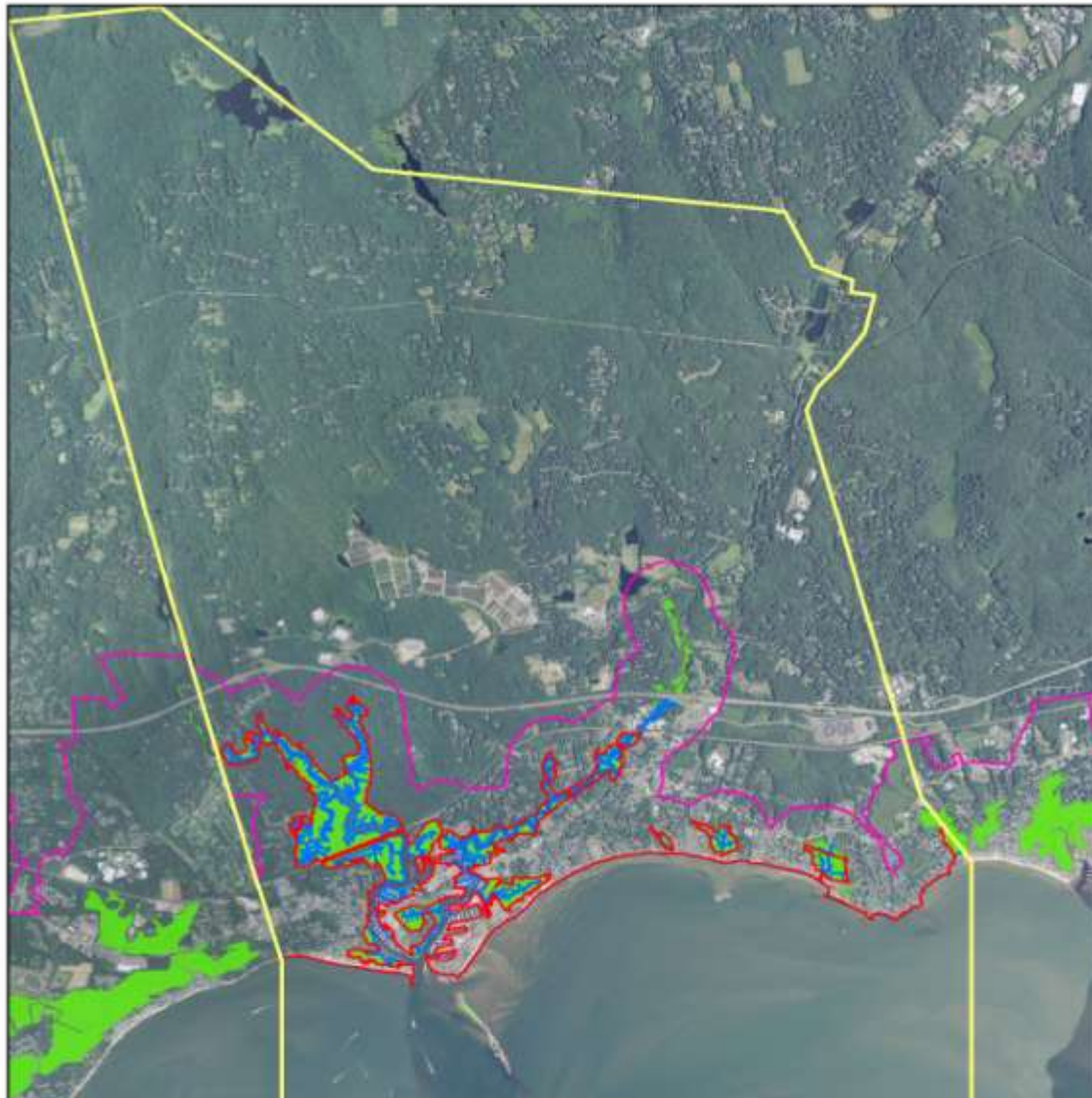
DEEP Certificate of Permission Applications for a Flood and Erosion Control Structure from 2002 to 2012



DEEP Applications for Flood and Erosion Control Structures 2002-2012

Total Permit and COP Applications = 1194





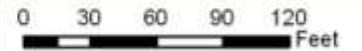
DEEP Regulatory Boundaries - Westbrook CT



- Coastal Jurisdiction Line (Westbrook - 3.2' NAVD88)
- Mean High Water (Westbrook ~1.6' NAVD88)
- Coastal Boundary
- Tidal Wetlands 1990s





Coastal Regulatory Boundaries - Westbrook CT



-  Coastal Jurisdiction Line - State Jurisdiction
-  Mean High Water - Municipal Jurisdiction
-  Regulatory Overlap

Municipal CSPR Applications 2000 – 2012

Total Reviews = 4317

