

Long Island Sound Blue Plan – Potential Data Products Review

Map Book Table of Contents:

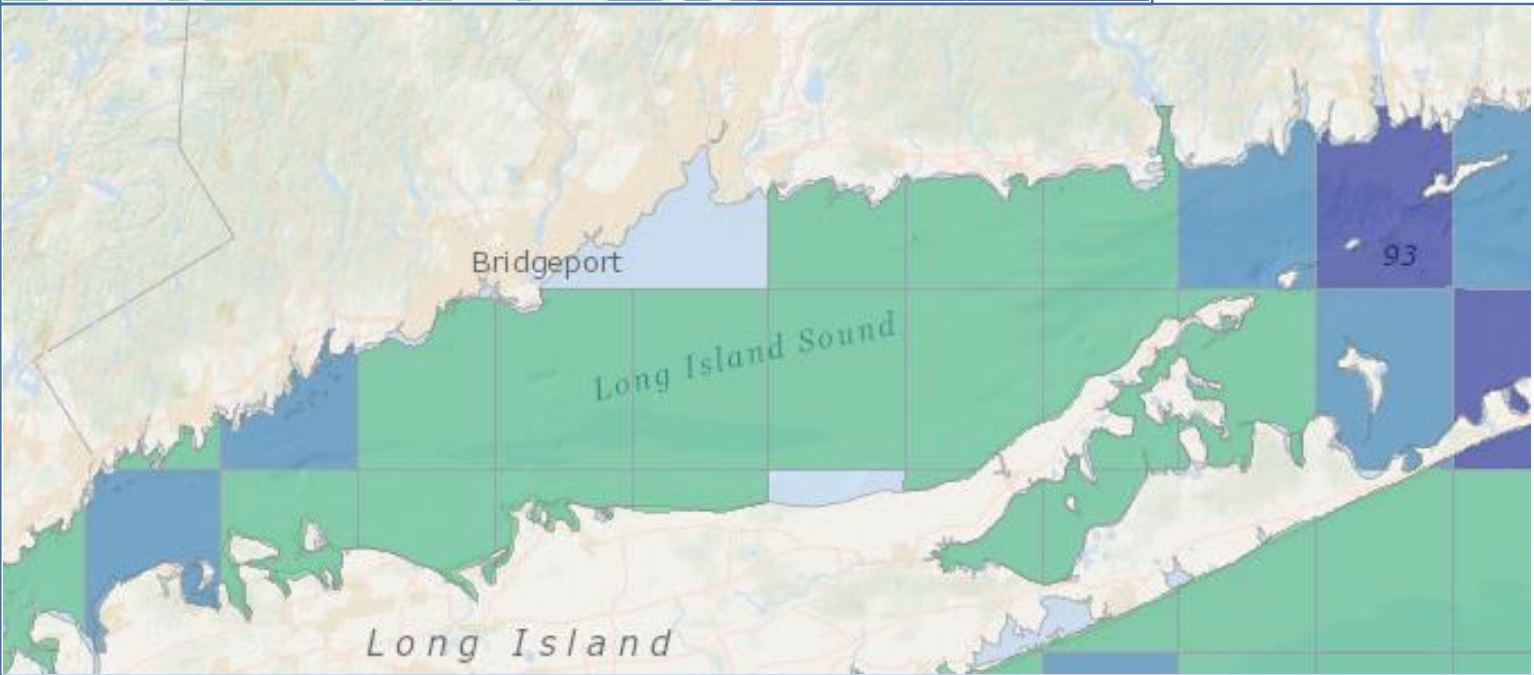
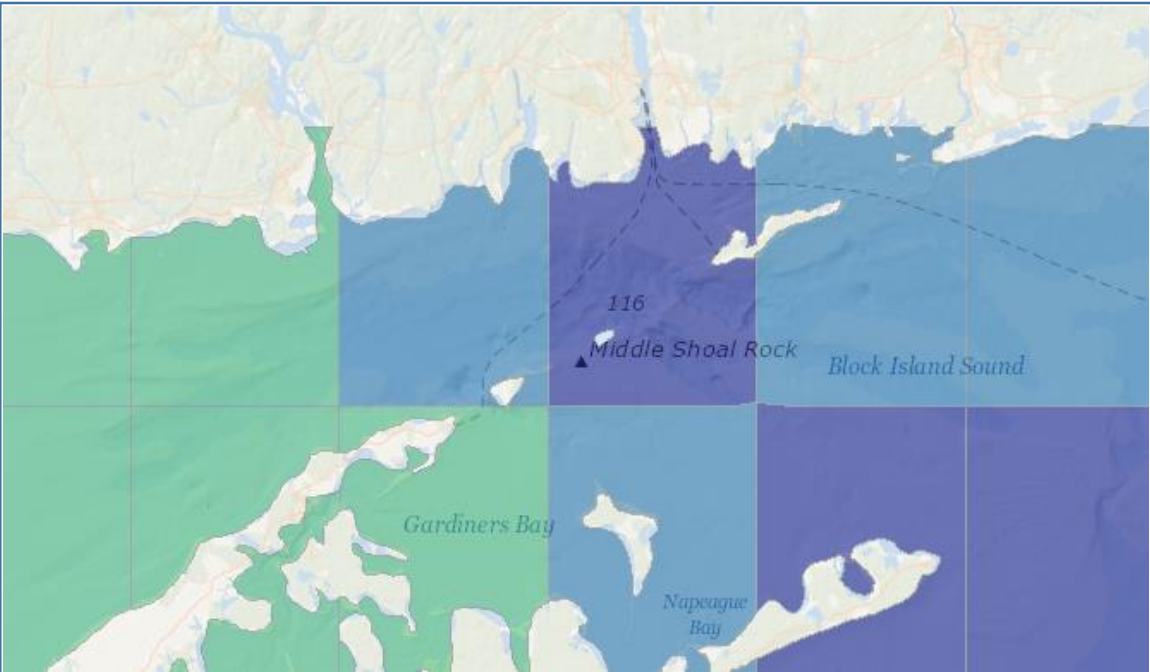
Charter & Party Boat Fishing

1. Party and Charter Boat Trips (Total 2000 – 2009)
2. Party & Charter Boats
3. Charter & Party Vessels Regional Landings (lbs) 2001 - 2010

Party & Charter Boat Trips (Total 2000-2009)

(Mid-Atlantic Ocean Data Portal)

Source: The Nature Conservancy, NOAA National Marine Fisheries Service



Party & Charter Boat Trips (Total 2000-2009)

- Greater than 2 std. dev. below avg. (1 trip)
- Between 1 to 2 std. dev. below avg. (2 to 6 trips)
- Within 1 std. dev. of avg. (6 to 399 trips)
- Between 1 to 2 std. dev. above avg. (399 to 2,975 trips)
- Greater than 2 std. dev. above avg. (> 2,975 trips)

Party & Charter Boat Trips



Blue Plan Sector(s): Marine Transportation & Navigation > Charter Fishing & Party Boats

Summary Description: *Abstract:* This product was created by the Nature Conservancy based on data provided by the National Marine Fisheries Service. The number of trips information is based on vessel trip report records that have been aggregated by ten minute square and have been screened for confidentiality. The records to produce this dataset are for federally permitted party boats and charter boats only. Vessel trip reports are submitted to the National Marine Fisheries Service by federally permitted fishing vessels for all fishing trips. The screening process protects the identity of each individual permitted commercial fishing vessel. Approximately 70% to 80% of all recorded of trips between 2000 and 2009 are represented in this dataset at the ten-minute square resolution. Note that these environmental data and related items of information have not been formally disseminated by NOAA and do not represent and should not be construed to represent any agency determination, view, or policy.

Full Description:

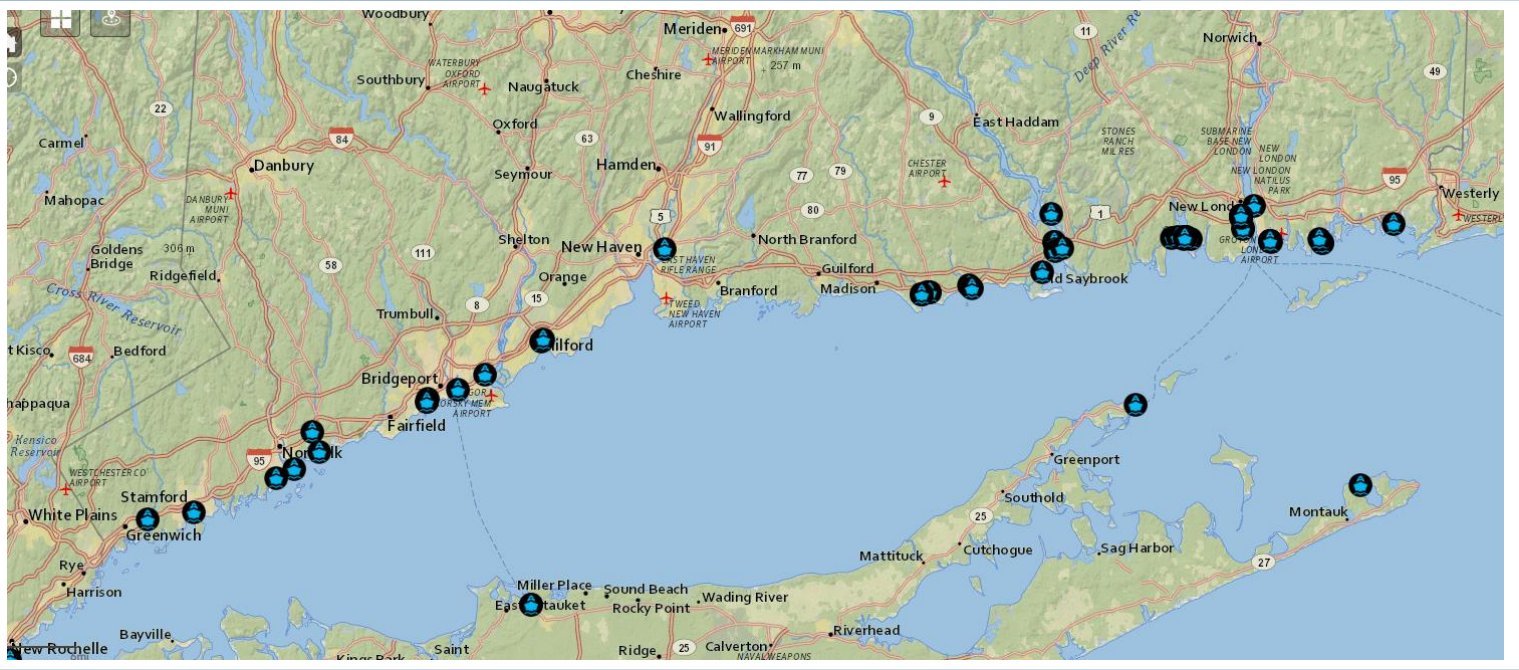
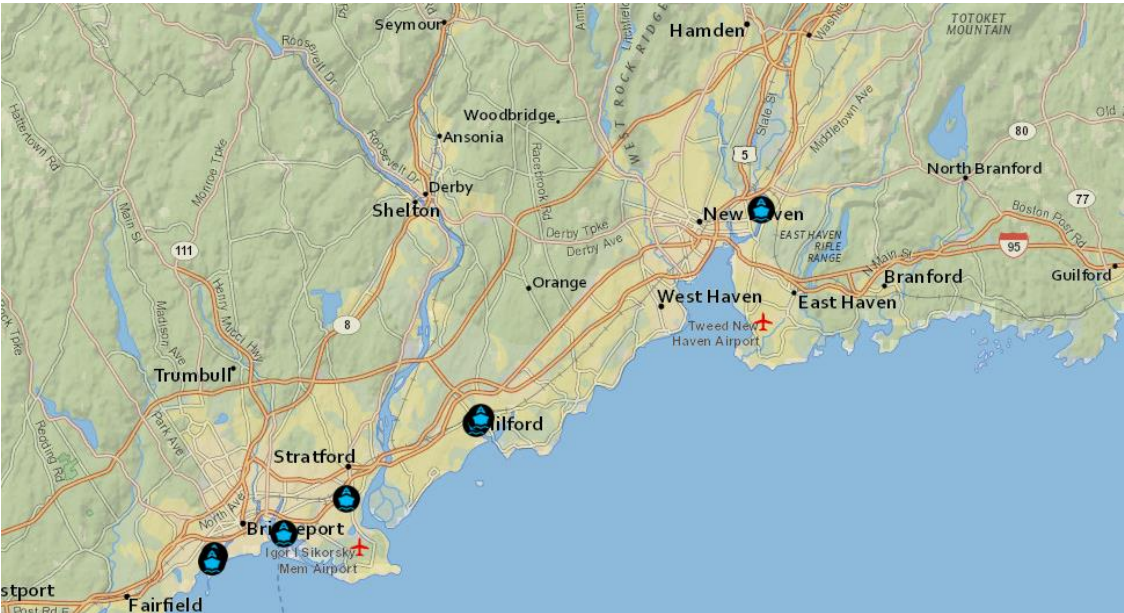
http://portal.midatlanticocean.org/static/data_manager/metadata/html/Recreational_fishing_effort.html

Access Instructions: Go to <http://portal.midatlantic.org/visualize>. Go to Fishing > Recreational Fishing > Party & Charter Boat

Party & Charter Boats

CTDEEP Saltwater Fishing Resource Map

Source: CTDEEP



Party and Charter Boats



Party & Charter Boats

Blue Plan Sector(s): Recreation & Tourism/Charter Fishing and Party Boats

Summary Description: Make sure that you are familiar with current sport fishing regulations (open seasons, size requirements, catch limits). Check the Angler's Guide for summaries of rules and regulations governing sport fishing in Connecticut. You can also view a separate summary of marine sport fishing regulations. For legal purposes, the Regulations of Connecticut State Agencies and the General Statutes of Connecticut should be consulted.

Party/ Charter Boats provide opportunities for saltwater fishing trips with experienced captains & crew. Contacting vendors ahead of time for current locations, rates, and schedule info is highly recommended. Vendors shown here have asked to be included in this map; the CT-DEEP is not recommending these vendors over any others and recognizes these represent only a partial listing.

Full Description: n/a

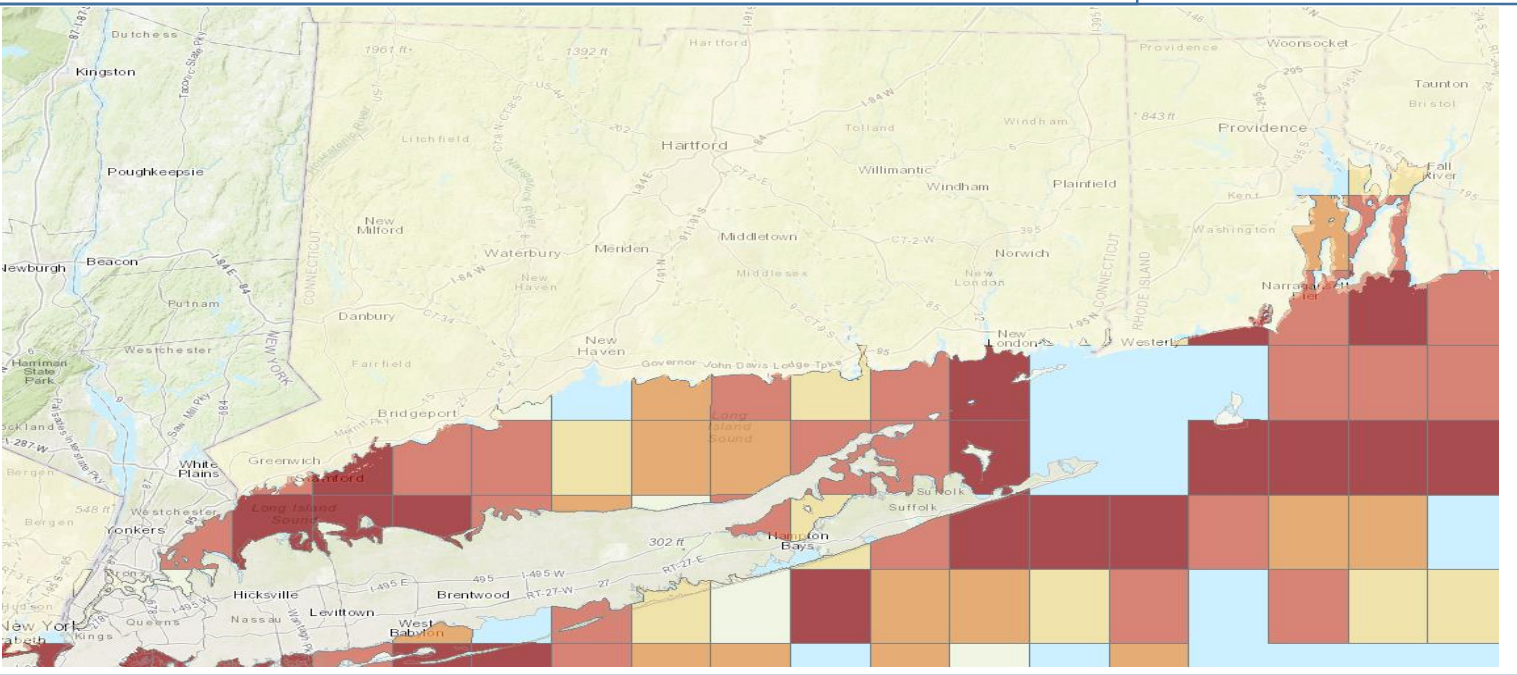
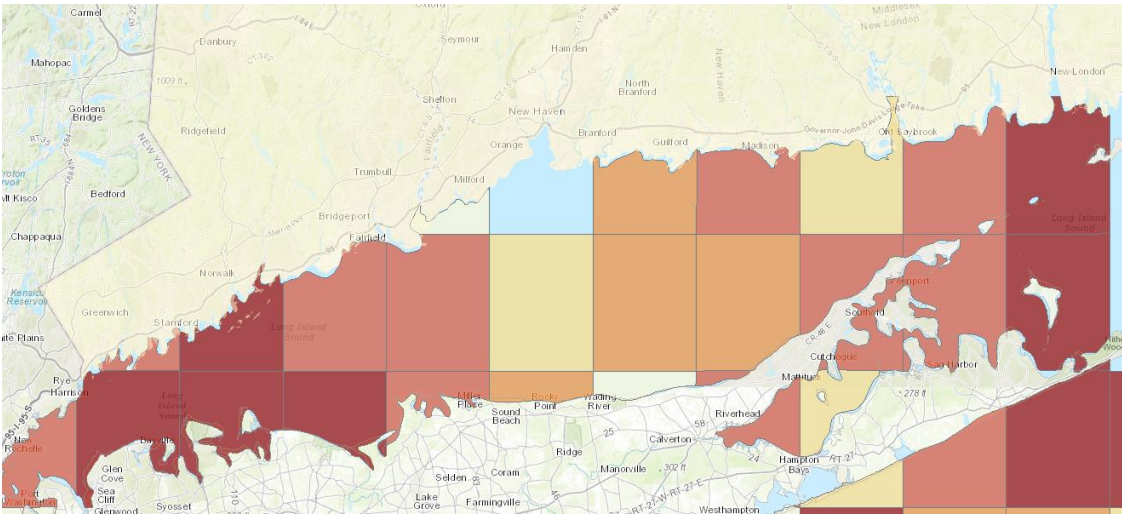
Access Instructions:

<https://ctdeep.maps.arcgis.com/apps/MapSeries/index.html?appid=719fe5662ac145f3b89fe8daf6b86042>

Charter & Party Vessels Regional Landings (lbs) 2001-2010

NY Geographic Information Gateway

Source: NOAA NMFS, Northeast Fisheries Science Center



- 9 - 1,281 (pounds)
- 1,282 - 2,650
- 2,651 - 6,758
- 6,759 - 37,801
- 37,802 - 1,930,078

Charter & Party Vessels Regional Landings (lbs) 2001-2010



Blue Plan Sector(s): Fish & Shellfish Resources > Commercial Fishing

Summary Description: These data were provided by the National Marine Fisheries Service. For more information about VTR reporting requirements and procedures please click here (link missing.) Please note that the use and analysis of these geographic data are limited by the scale at which the data were collected and mapped; as a regional analysis, these data are not intended for site level decisions. This data product represents the total amount of fish landed (measured in pounds) by federally permitted for-hire charter and party vessels between 2001 and 2010. The amount of landings is based on annual Vessel Trip Report (VTR) summaries provided by the National Marine Fisheries Service (NMFS). These summaries are aggregated by ten minute square. VTRs are required for most federally permitted fishing vessels. This dataset is intended for use in ocean planning activities, not site-level decisions.

Full Description:

<http://opdgig.dos.ny.gov/geoportal/catalog/search/resource/detailsnoheader.page?uuid={83840D47-535B-4EA7-BEFC-29154D1C4239}>

Access Instructions: <http://opdgig.dos.ny.gov/#/map>, go to “Commercial Fishing,” then “Regional”