



**LONG ISLAND SOUND**  
**BLUE PLAN**

*Sustainable Ecosystems - Compatible Uses*

Blue Plan Advisory Committee Meeting  
September 1, 2021

<http://www.ct.gov/deep/lisblueplan>

# Legislative Recap



**2015 Legislative Session: PA 15-66 calls for the Blue Plan**  
**2019: Blue Plan is ready for legislative approval**



# 2020 Legislative Session: Environment Committee unanimous approval Enter Covid



# 2021 Legislative Session: HJ 53 to approve Blue Plan

- Feb. 10 '21: Environment Committee Hearing
- 34 submitted testimony (all in favor)
- Strong DEEP testimony (Com. Katie Dykes)
- BPAC members:
  - Alicia Mozian
  - Bill Lucey
  - Christine Nelson
  - Nathan Frohling
  - Sylvain De Guise



# Feb. 26: Environment Committee unanimous approval



Senator Christine Cohen, Co-Chair



Rep. Dorinda Borer, Co-Chair



Senator Craig Minor,  
Ranking Member



Rep. Stephen Harding  
Ranking Member

**How to get to the floor!**

**March and April . . .**



**Matt Ritter Speaker of the House**



# March and April:

# Staying in the game

CT Hearst Media

## Opinion: Years in the making, Long Island Sound Blue Plan now in hands of Legislature

Judy Benson

March 5, 2021 Updated: March 5, 2021 3:35 p.m.

[Comments](#)



State Rep. Joe Gresko (D-121) explores his district on a map in 2019 created as part of the Blue Plan, which aims to protect Long Island Sound by creating an inventory of its resources and uses.

File photo





# April 26: House Passage unanimous: 142-0

CT-N Live Stream 2

HJ 53

CALENDAR# 115  
PAGE# 62

RESOLUTION PROPOSING THE ADOPTION OF THE LONG ISLAND SOUND BLUE PLAN

Y ABERCROMBIE	Y DILLON	Y HUGHES	Y PORTER	Y WOOD, K	Y DEVLIN	Y MCCORTY, B.	SPEAKER
Y ALLE-GREANN	Y DINASSA	Y JUVASIN	Y QUINN	Y YOUNG	Y DURTSKY	Y NUCCIO	Y RITTER
Y ANCONI	Y DOUCETTE	Y KARLOS DEGRAND	Y RICHELLE	Y ZIGAS	Y FERRARO	Y OTERA	DEP SPKR PRO TEM
Y ARNONE	Y ELLIOTT	Y LEEPER	Y RAJAS		Y FIDELLO	Y PALALOCK-D'AMATO	Y GONFREY
Y BAKER	Y EXUM	Y LEHAR	Y SANCHEZ, E.	Y ADVERT	Y FISHER	Y PERILLO	
Y BARRY	Y FARAR	Y LINEHAN	Y SANCHEZ, R.	Y ANDERSON	Y FRANCE	Y PETTIT	DEPUTY SPEAKERS
Y BEISER-BARNALO	Y FELPE	Y LUVENBERG	Y SCHILON	Y ARORA	Y FUSCO	Y PISCOPPO	Y BUTLER
Y BILMENTAL	Y FOSTER	Y MCCARTHY-WAHEY	Y SHANNON, C.	Y BETTS	Y GREEN	Y POLLETTA	Y CANDELARIO, J.
Y BIRER	Y FOX	Y MOORE	Y SHAW, T.	Y BOLINSKY	Y HANES	Y RATTIOLANO	Y COOK
Y BOND	Y GARDNY	Y MESSERS	Y SMITH, B.	Y BUCKBEE	Y HALL, C.	Y SCOTT	Y GONZALEZ
Y CAFFEY	Y GENGA	Y MICHEL	Y SMITH, F.	Y CALLAHAN	Y HARRISON	Y UHL	Y HALL, J.
Y COFFEY	Y GIBSON		Y STAFSTROM	Y CHAMBERLAIN, U.	Y HAYES	Y WELCH	Y MUSHANSKY
Y CONCEPCION	Y GILCHRIST	Y MORAN BELLO	Y STALLWORTH	Y CARNEY	Y HOLLARD	Y WILSON	Y REYES
Y CONLEY	Y GOPEL	Y NAPOLI	Y STENDERS	Y CARPINO	Y KENNEDY	Y WOOD, T.	Y RILEY
Y CURRY	Y GREEN	Y NOLAN	Y TERRY, THOMAS	Y CASE	Y KLAIDES-DITTA	Y YACCARINO	Y ROSARIO
Y DAGOSTINO	Y GUCKER	Y PALM	Y THURD	Y CHEESEBROUGH	Y LABRIOLA	Y ZAWISTOWSKI	Y RYAN
Y DATTA	Y HADAD	Y PAOLLO	Y WALKER	Y D'AMICO	Y LANJUE	Y ZULLO	Y SANTIAGO, H.
Y DE LA CRUZ	Y HARTMAN	Y PAXER	Y WELANDER	Y D'AMICO	Y MASTROFRANCESCO	Y ZUPKUS	Y VARGAS
Y DEWICKO	Y HENNESSY	Y PERONE	Y WINKLER	Y DELMONICO	Y MCCORTY, K.		
Y DELOACH	Y HORN	Y PIPPS					

CT N 04/26/21



Env. Com. Co-Chair Rep. Joe Gresko

# April 26: House Passage unanimous: 142-0

## House Sponsors:

Rep. Joseph P. Gresko

Rep. Laura M. Devlin

Rep. Mary M. Mushinsky

Rep. Kathy Kennedy

Rep. Terrie E. Wood

Rep. Geraldo C. Reyes

## House Movers & Shakers:

Rep. Dorinda Borer

Rep. Jonathan Steinberg

Rep. Cristin McCarthy-Vahey

Rep. Mike Demicco

Rep. Jason Rojas

# Moving the Senate: April May



**Senate Majority Leader Bob Duff:**  
Responsive to advocacy for the Blue Plan



**Env. Com. Co-Chair Senator Christine Cohen**  
Tireless leader for the Blue Plan

## Senate Movers & Shakers:

- Sen. Christine Cohen**
- Sen. Tony Hwang**
- Sen. Will Haskell**
- Sen. Cathy Osten (Co-sponsor)**
- Sen. Bob Duff**

# May 14: Senate: unanimous approval: 35-0



Senator Christine Cohen



Senator Craig Miner

**Long Island Sound  
Blue Plan  
becomes law**

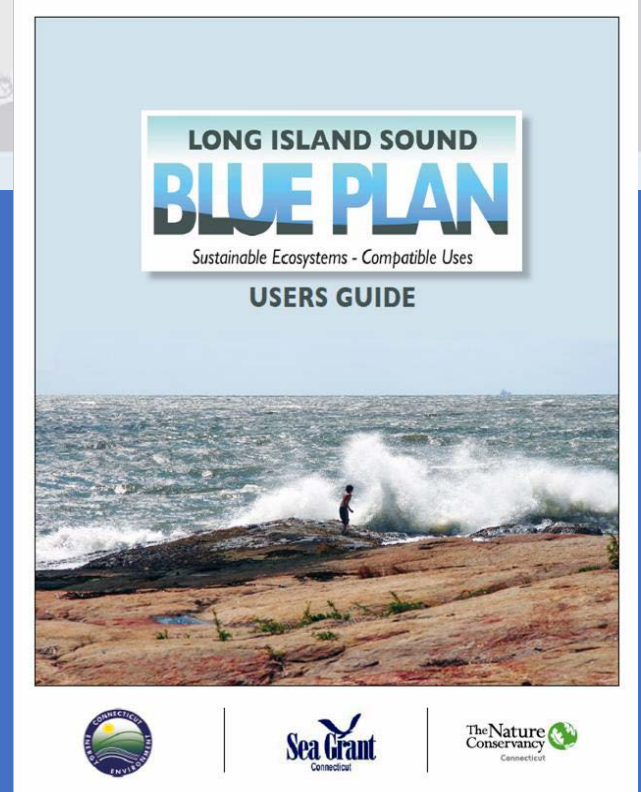
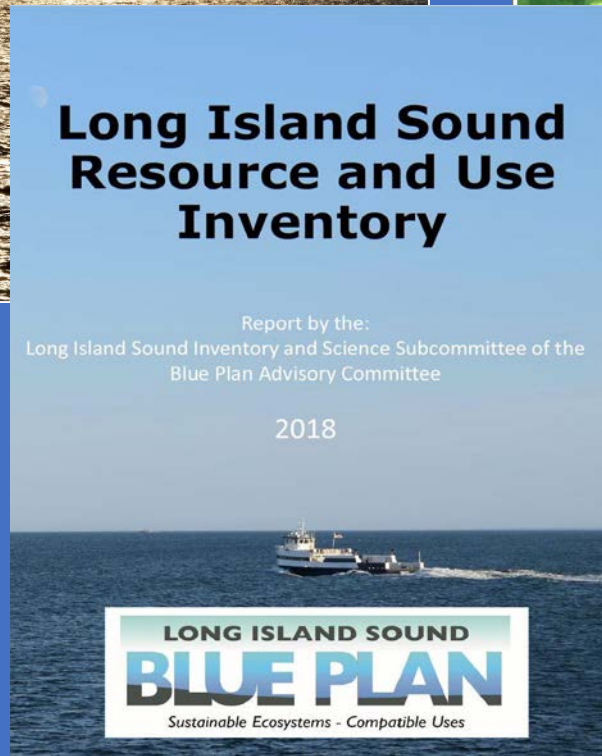
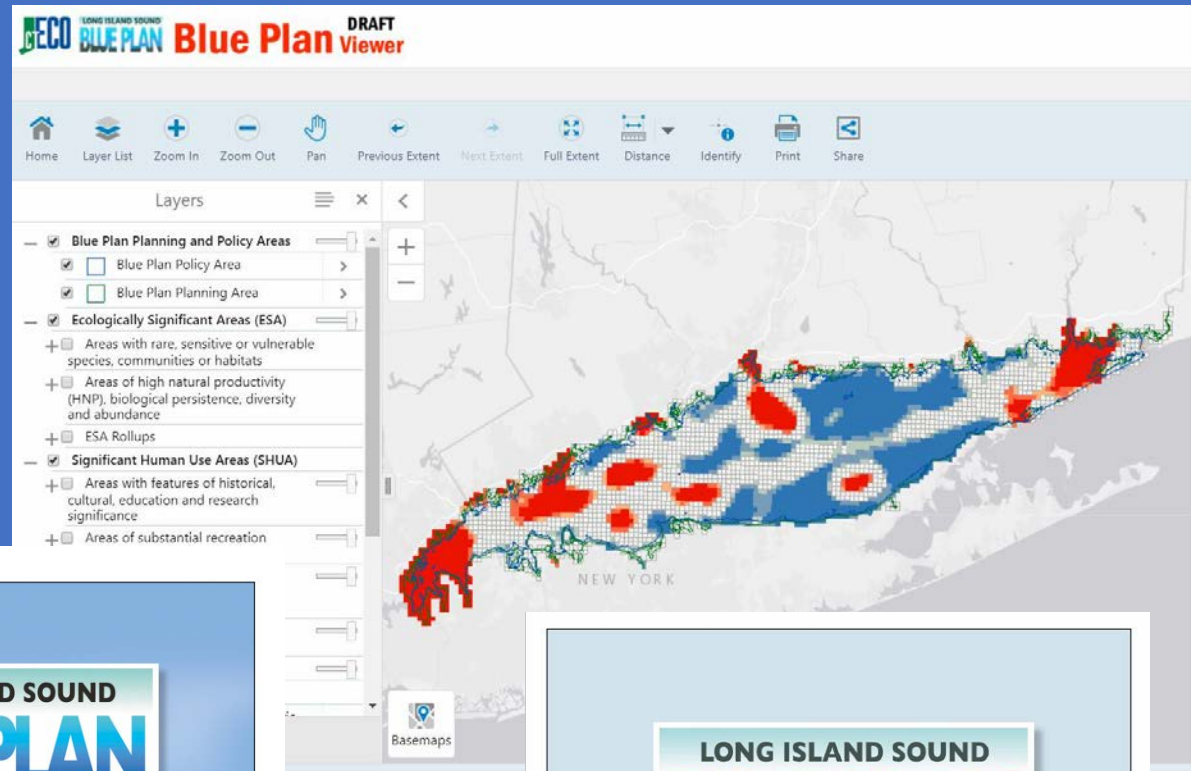
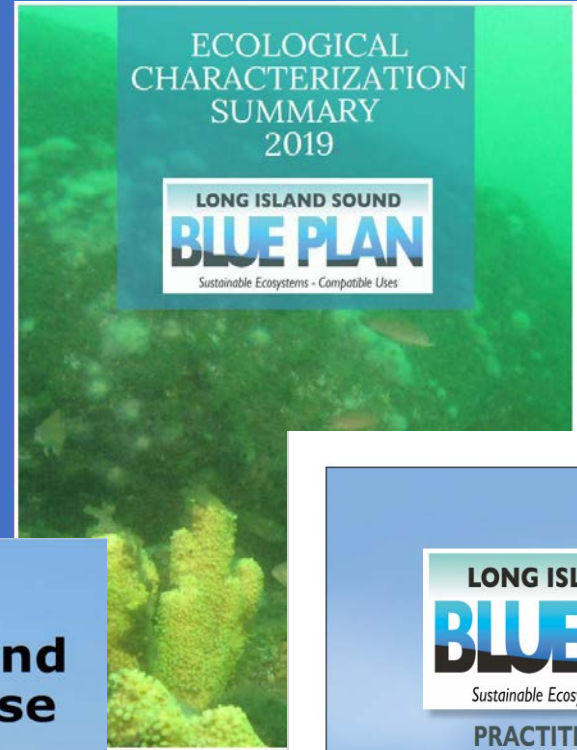


# Thank you!

Blue Plan Advisory Committee  
Commissioners Dan Esty, Rob Klee, Katie Dykes  
Governors Malloy and Lamont  
2021 CT Legislature  
Past legislative leaders:  
Rep. James Albis  
Rep. Mike Demicco  
Sen. Ted Kennedy  
DEEP Staff  
Advocates, stakeholders, scientists, volunteers  
...and more



# Blue Plan Resources and Tools



# Blue Plan Policy Area

- **Policy Area** is defined by map: 11.8' NOAA contour and deeper
- **Planning Area** covers all LIS coastal municipalities.





# Plan Policies and the Existing Permitting Process

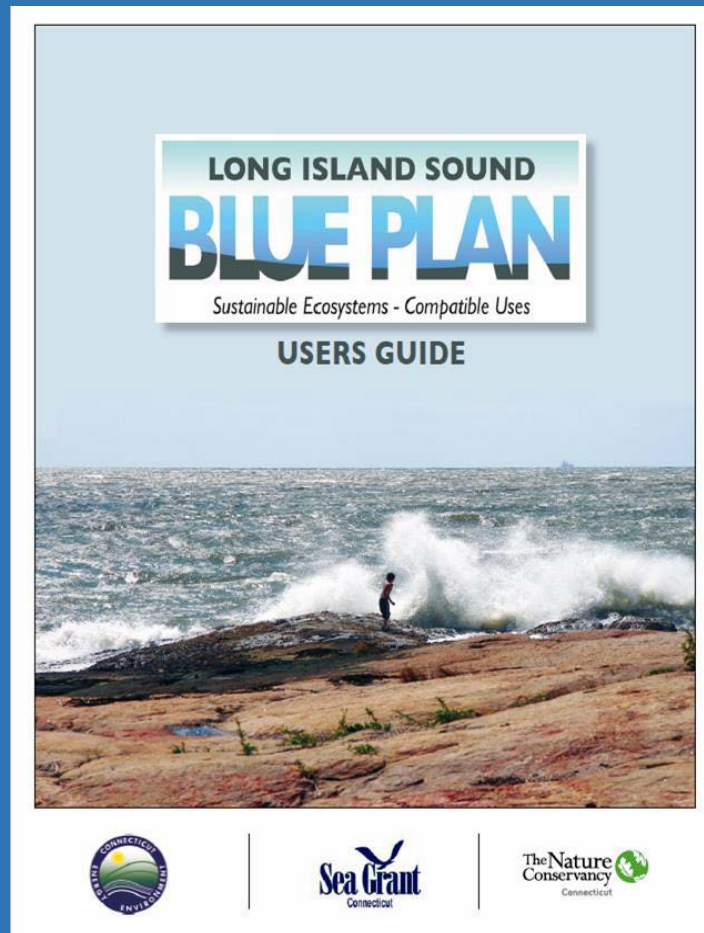
- Only apply to new projects under specific conditions
  - DEEP, DA/BA, CSC, Local Shellfish Commission programs
  - Within Plan policy area
- Guide project proponents in avoiding impacts
  - Within the scope of existing permitting programs
  - Clarify existing regulatory process requirements
  - SHUA and ESA provide information applicants need
- Examples of using the Blue Plan available in the Users Guide
  - Section 4
  - Supplement and appendices

# User's Guide

Quick reference for navigating Plan

[BluePlanUsersGuide Appendices.pdf](#)

(ct.gov) 22 pages



## GUIDE QUICK-START: REFERENCE QUESTIONS

1. **What is the Blue Plan?** → see [Section 1](#) of this guide, or Chapter 1 of the Blue Plan
2. **How do I know if the Blue Plan applies to me?** → see [Section 4.2](#) of this guide, or Chapter 4.1 of the Blue Plan
3. **How do I use the Blue Plan when getting a permit?** → see [Section 4.4](#) of this guide, or Chapter 4 of the Blue Plan
4. **How does the Blue Plan integrate with existing regulation?** → see [Section 4](#) or the [User's Guide Supplement](#), or Chapter 2.5 of the Blue Plan
5. **Where do I go to learn about the various components of the Blue Plan?** → see [Section 2](#) of this guide, or Chapter 3 of the Blue Plan
6. **Are there examples to help clarify how to use the Blue Plan?** → see [the fictional case study](#) in this guide
7. **What are some of the key terms in the Plan and what do they mean?** → see [part 3 in the User's Guide Supplement](#), or Terminology in the Blue Plan
8. **How does the regulating community evaluate "significant" impacts?** → see [part 1.E of the User's Guide Supplement](#).
9. **What are "Significant Human Use Areas (SHUA)" and "Ecologically Significant Areas (ESA)"?** → see [Section 2](#) of this guide, or Chapter 3.3 and 3.4 of the Blue Plan
10. **How does the Blue Plan protect me?** → see [Section 4.1](#) of this guide, or Chapter 1 of the Blue Plan
11. **How do I use the Blue Plan as a source of information?** → see [Section 3](#) of this guide, or Chapter 3 of the Blue Plan
12. **What is the process to update or improve the Blue Plan?** → see [Section 6](#) of this guide, or Chapter 5 of the Blue Plan



Photo by Christian Fox

# Users Guide

- Intended for project proponents
- Using the Plan to site a project and submit an application

**IS THE PROJECT DEFINED AS A SIGNIFICANT HUMAN USE?**

- CONSULT THE BLUE PLAN FOR DEFINITIONS OF SIGNIFICANT HUMAN USES
- IF IT IS, CONSULT THE BLUE PLAN MAP VIEWER TO FIND LOCATIONS OF OTHER SIMILAR SIGNIFICANT HUMAN USE AREAS; CO-LOCATE THE PROPOSED USE IF POSSIBLE

**LOCATE SIGNIFICANT HUMAN USE AREAS (SHUA)**

- CHECK THE COMPATIBILITY MATRICES TO DETERMINE THE POTENTIAL CONFLICTS THE USE MIGHT HAVE WITH OTHER USES
- CONSULT THE BLUE PLAN MAP VIEWER TO IDENTIFY LOCATIONS OF THE SIGNIFICANT HUMAN USE AREAS THE PROPOSED USE MIGHT CONFLICT WITH; AVOID THOSE AREAS IF POSSIBLE
- CAN THE PROJECT BE FUNCTIONALLY LOCATED IN AREAS WHERE POTENTIAL CONFLICTS WITH SHUAS ARE MINIMIZED?
- IF THOSE AREAS CANNOT BE AVOIDED, CONSULT THE POLICIES IN CHAPTER FOUR OF THE BLUE PLAN TO IDENTIFY THE APPLICABLE SHUA POLICIES THAT WILL BE CONSIDERED
- NOTE THAT THE SITING AND PERFORMANCE STANDARDS ARE ARRANGED BY THE DEPTH ZONE OF A POTENTIAL IMPACT; DETERMINE IF THE PROJECT WILL AFFECT THE SURFACE, WATER COLUMN, AND/OR SUBSTRATE

**LOCATE ECOLOGICALLY SIGNIFICANT AREAS (ESA)**

- CHECK THE COMPATIBILITY MATRICES TO DETERMINE THE POTENTIAL CONFLICTS THE USE MIGHT HAVE WITH ESA
- CONSULT THE BLUE PLAN MAP VIEWER TO IDENTIFY LOCATIONS OF THE ECOLOGICALLY SIGNIFICANT AREAS THE PROPOSED USE MIGHT CONFLICT WITH; AVOID THOSE AREAS IF POSSIBLE
- CAN THE PROJECT BE FUNCTIONALLY LOCATED IN AREAS WHERE POTENTIAL CONFLICTS WITH ESA ARE MINIMIZED?
- IF THOSE AREAS CANNOT BE AVOIDED, CONSULT THE POLICIES IN CHAPTER FOUR OF THE BLUE PLAN TO IDENTIFY THE APPLICABLE ESA POLICIES THAT WILL BE CONSIDERED
- NOTE THAT THE SITING AND PERFORMANCE STANDARDS ARE ARRANGED BY THE DEPTH ZONE OF A POTENTIAL IMPACT; DETERMINE IF THE PROJECT WILL AFFECT THE SURFACE, WATER COLUMN, AND/OR SUBSTRATE

**CONSIDER GENERAL ESA/SHUA POLICIES, SOUND-WIDE POLICIES, AND LENSES**

- ENSURES THAT SIGNIFICANT ADVERSE IMPACTS NOT ASSOCIATED WITH A SPECIFIC SHUA OR ESA ARE ADDRESSED
- GENERALLY, ENVIRONMENTAL VALUES MUST BE MAINTAINED
- CONSULT THE BLUE PLAN LENSES TO DETERMINE THE SUITABILITY, LOCATION, TIMING, AND POSSIBLE CONSULTATION AND ADDITIONAL DATA NEEDS OF THE PROJECT

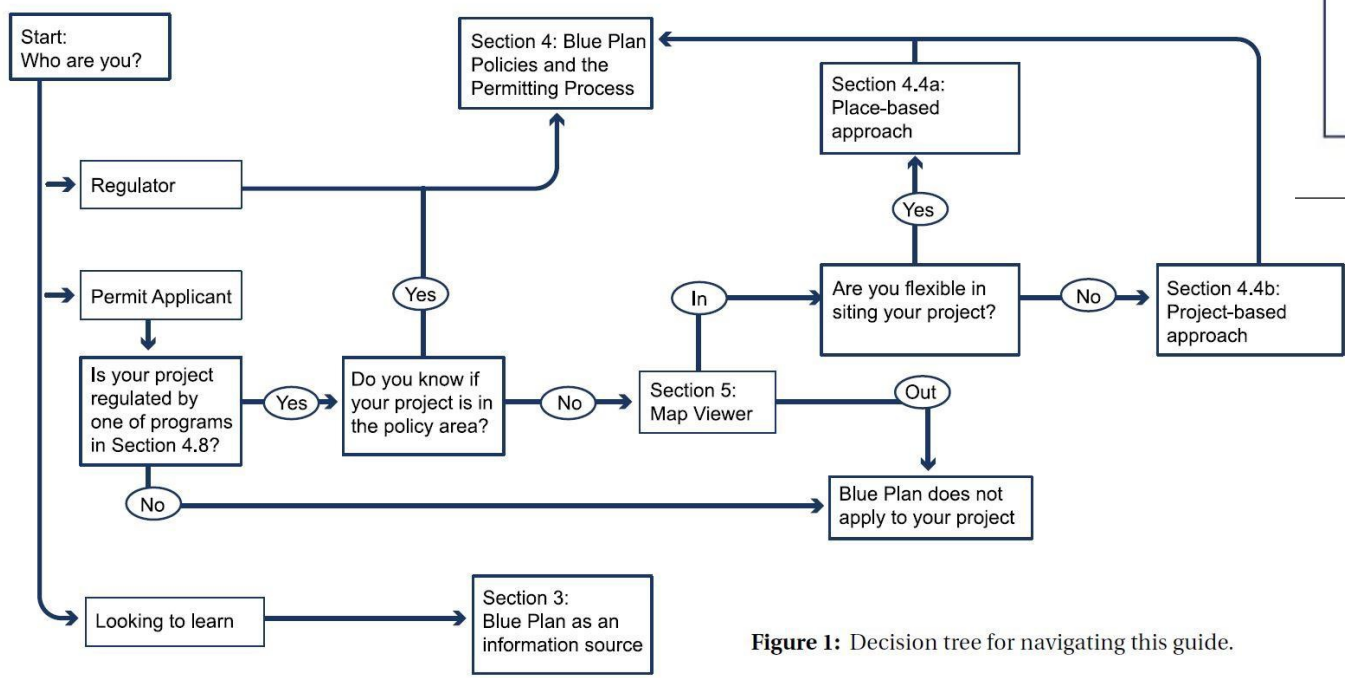


Figure 1: Decision tree for navigating this guide.

# Plan Policies: A help, not a Hassle

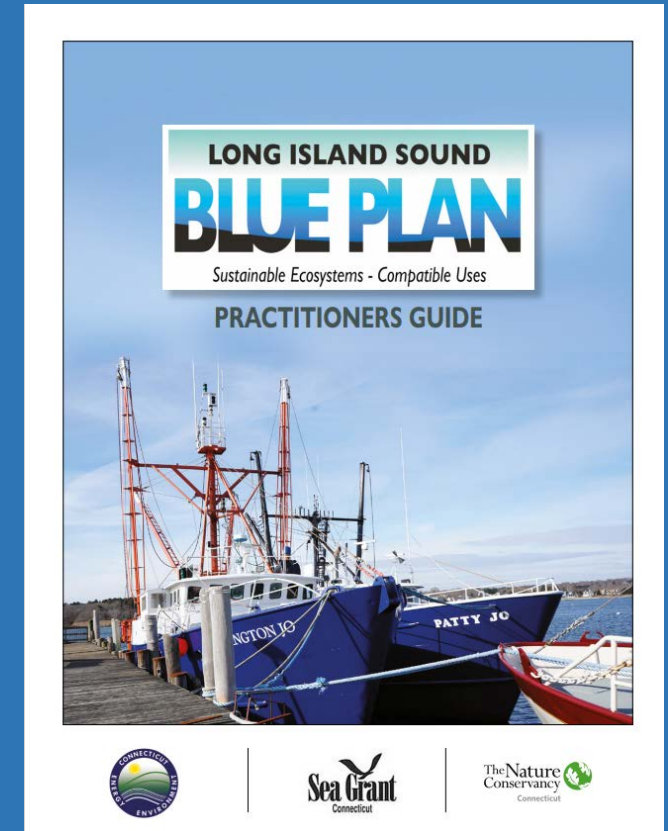
*Interface of Blue Plan and existing requirements using example of SDF Form C; Users Guide supplement*

Table 1: Comparison Table, Permit application with the Blue Plan

Column A	Column B	Column C	Column D
<b>Form C Language</b>	<b>Existing LWRD Application Requirement</b>	<b>Additional Application Requirements from Blue Plan</b>	<b>Potential Uses of the Blue Plan to Achieve LWRD Requirements:</b>
<b>Part I; pre-submission consultations:</b> NDDDB, Dredging Projects, DEEP Fisheries, Bureau of Aquaculture, local Harbor Management Commissions, Shellfish Commissions, USACE.	Preliminary coordination and input from these agencies/groups depending on the activity and the location. Consultations must occur prior to submission. Applicant should start with these consultations, as applicable (See Part VI of Form C for further guidance).	If project will be in a SHUA for commercial fishing, applicants are required to give notification to fishers potentially impacted.	<p><b>General:</b> Blue Plan provides information about, and known spatial extent of, the activities and natural resources managed by the agencies in Column A. The Blue Plan also provides direction for minimizing impacts of new projects so they may proceed. Applicants may use all of this in preparing for consultation with the required authorities in order to have more informed, productive conversations.</p> <p>Appendix 1 of this Guide provides maps of Harbor Management Commission areas, allowing applicants to see their exact extent online for the first time.</p> <p><b>Commercial Fisheries:</b> <i>DEEP Fisheries will help with guidance for this and a process has yet to be established, but it will most likely be a mailer to relevant fishers.</i></p>
<b>Part III.4; Indian Lands*</b>	Is the activity that is the subject of this application located on federally recognized Indian lands? Y/N	None	<b>*While not required for LWRD Form C, the State Historical Preservation Office (SHPO) requires project proponents to submit a <a href="#">Project Review Cover Form</a>; the Blue Plan assists in assembling this document by providing previously-unavailable locations and information on areas with historical and cultural significance, such as submerged archeological sites.</b>
<b>Part III.12; Coastal Resources Impact Table</b>	Check the applicable boxes to identify coastal resources to be impacted by the proposed activity at the project site. Describe the impacts, as applicable.  Resources: Benthic Habitat, Submerged Aquatic Vegetation, Finfish, Wildlife, Shellfish Areas, Visual Quality	None  See Introduction above for an explanation. See Column D for how Blue Plan information and policies nest into the existing permit application.	As noted in the Introduction at the top of the chart, the Blue Plan does not establish a new requirement in filling out the permit application, but it does provide new direction in how best to fill out the existing requirements. That is because the Blue Plan information and policies will be considered as a factor in the review of the application. In short, it will be helpful for the applicant to organize answers re impacts to coastal resources so that they correspond with the Ecologically Significant Areas (ESA) identified by the Blue Plan. Please see below for how the ESA correspond to the coastal resources:

# Practitioner's Guide

- Supplement to the Blue Plan and Users Guide
- Provides an overview of ways the Blue Plan can benefit users interested in the Sound outside the context of regulatory guidance
- [BluePlan PractitionersGuide Final.pdf](#) 34 pages



# Practitioner's Guide

- Municipal and Local benefits
- State Agency Implementation
- Federal and Regional Scale



- Practitioner's Guide: Municipal and Local benefits
  - Information for pro-active planning & decision-support tools
  - Examples:
    - Improved waterways awareness in Darien
    - Public access in Bridgeport Waterfront Planning
    - Fishers Island Seagrass Mgmt. Planning
    - Supporting economic development in Suffolk County



- Practitioner's Guide: Municipal and Local benefits

Pro-active aquaculture industry siting example:

- Evaluation of areas most suitable & potential conflicts identified
- Engaging other users to find solutions





- Practitioner's Guide: State Agency Coordination
  - CT: Blue Plan can bolster coastal program w improved grant applications and federal consistency
  - CT: Blue Plan help track and implement C&D Plan priorities
  - NY: agencies can incorporate BP info & guidance in permit programs
  - NY: planning projects improved, e.g. DEC bioextraction siting tool



- Practitioner's Guide: Federal and Regional Scale

- Examples:

- Long Island Sound Study

- Informing and coordinating federal permitting

- Non-permitting federal agency use

- USCG, Sector Long Island Sound

- Guiding CT's NERR

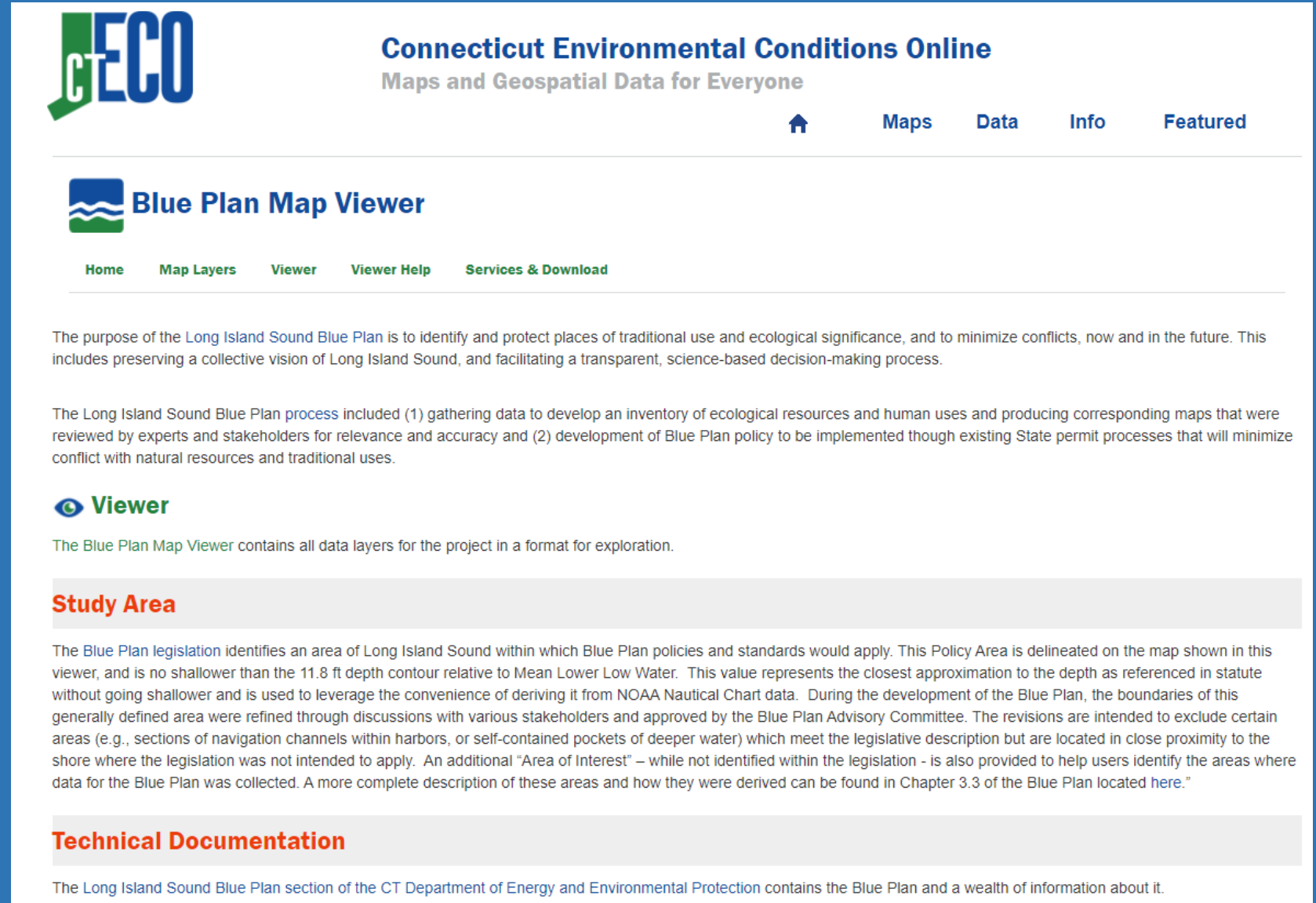


# Blue Plan Data Viewer:

Home Page: <http://cteco.uconn.edu/projects/blueplan/index.htm>

Created in partnership with UConn

Provides background information, technical documents, online help, access to data downloads and webservices



The screenshot shows the website for the Connecticut Environmental Conditions Online (CTECO) Blue Plan Map Viewer. The header includes the CTECO logo and the text "Connecticut Environmental Conditions Online" and "Maps and Geospatial Data for Everyone". Navigation links for Home, Maps, Data, Info, and Featured are visible. Below the header, the "Blue Plan Map Viewer" section has sub-links for Home, Map Layers, Viewer, Viewer Help, and Services & Download. The main content area contains introductory text about the Long Island Sound Blue Plan, a "Viewer" section with an eye icon, and a "Study Area" section with a red heading. A "Technical Documentation" section is also present at the bottom.

**CTECO** Connecticut Environmental Conditions Online  
Maps and Geospatial Data for Everyone

Home Maps Data Info Featured

**Blue Plan Map Viewer**

Home Map Layers Viewer Viewer Help Services & Download

The purpose of the Long Island Sound Blue Plan is to identify and protect places of traditional use and ecological significance, and to minimize conflicts, now and in the future. This includes preserving a collective vision of Long Island Sound, and facilitating a transparent, science-based decision-making process.

The Long Island Sound Blue Plan process included (1) gathering data to develop an inventory of ecological resources and human uses and producing corresponding maps that were reviewed by experts and stakeholders for relevance and accuracy and (2) development of Blue Plan policy to be implemented through existing State permit processes that will minimize conflict with natural resources and traditional uses.

**Viewer**

The Blue Plan Map Viewer contains all data layers for the project in a format for exploration.

**Study Area**

The Blue Plan legislation identifies an area of Long Island Sound within which Blue Plan policies and standards would apply. This Policy Area is delineated on the map shown in this viewer, and is no shallower than the 11.8 ft depth contour relative to Mean Lower Low Water. This value represents the closest approximation to the depth as referenced in statute without going shallower and is used to leverage the convenience of deriving it from NOAA Nautical Chart data. During the development of the Blue Plan, the boundaries of this generally defined area were refined through discussions with various stakeholders and approved by the Blue Plan Advisory Committee. The revisions are intended to exclude certain areas (e.g., sections of navigation channels within harbors, or self-contained pockets of deeper water) which meet the legislative description but are located in close proximity to the shore where the legislation was not intended to apply. An additional "Area of Interest" – while not identified within the legislation - is also provided to help users identify the areas where data for the Blue Plan was collected. A more complete description of these areas and how they were derived can be found in Chapter 3.3 of the Blue Plan located [here](#).

**Technical Documentation**

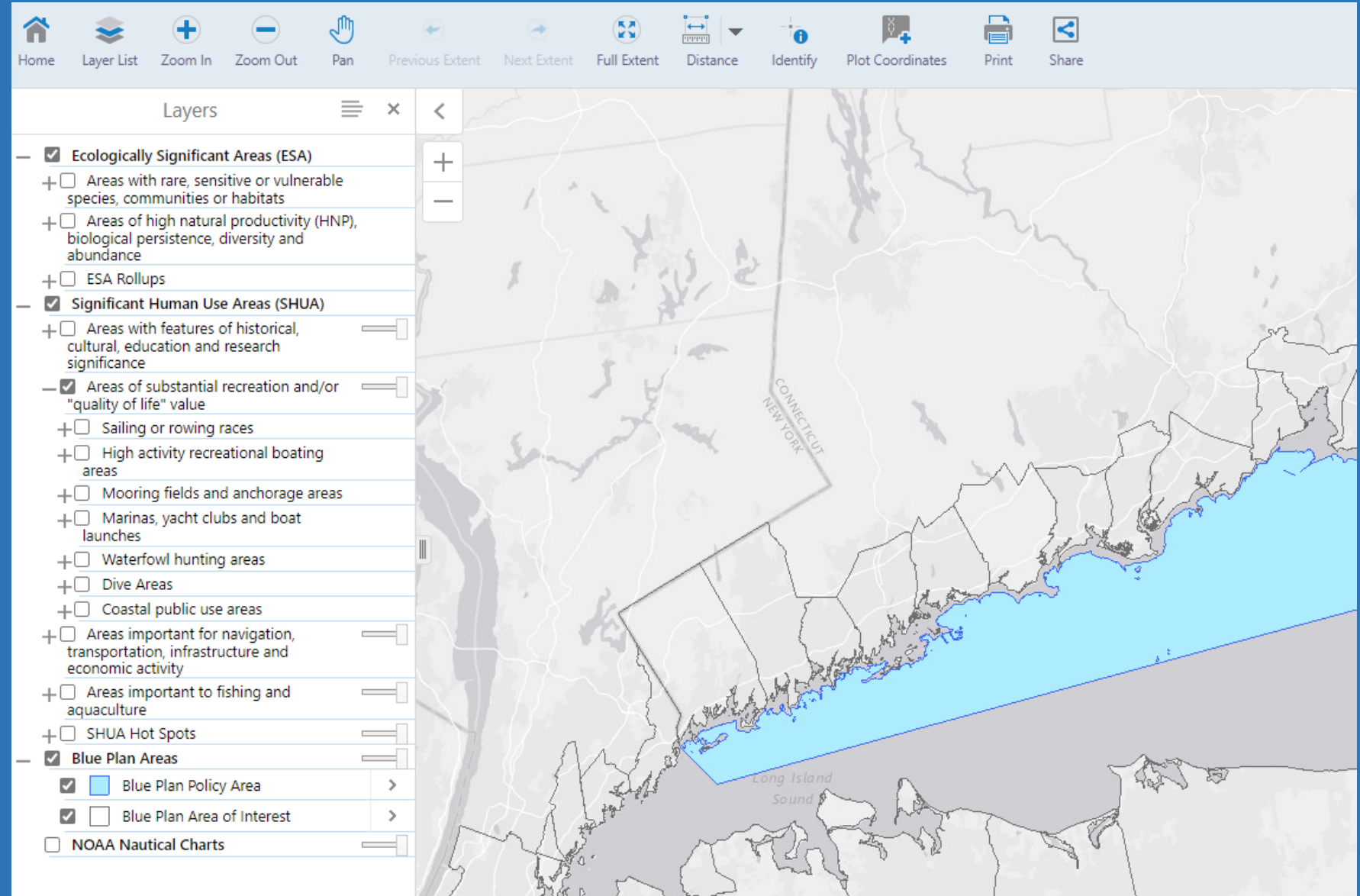
The Long Island Sound Blue Plan section of the CT Department of Energy and Environmental Protection contains the Blue Plan and a wealth of information about it.

# Blue Plan Data Viewer:

Viewer : <https://cteco.uconn.edu/viewer/index.html?viewer=blueplan>

Offers many tools and options to interact with data.

Organizes ESA and SHUA data by groups and sub-groups – same as within the Blue Plan itself.

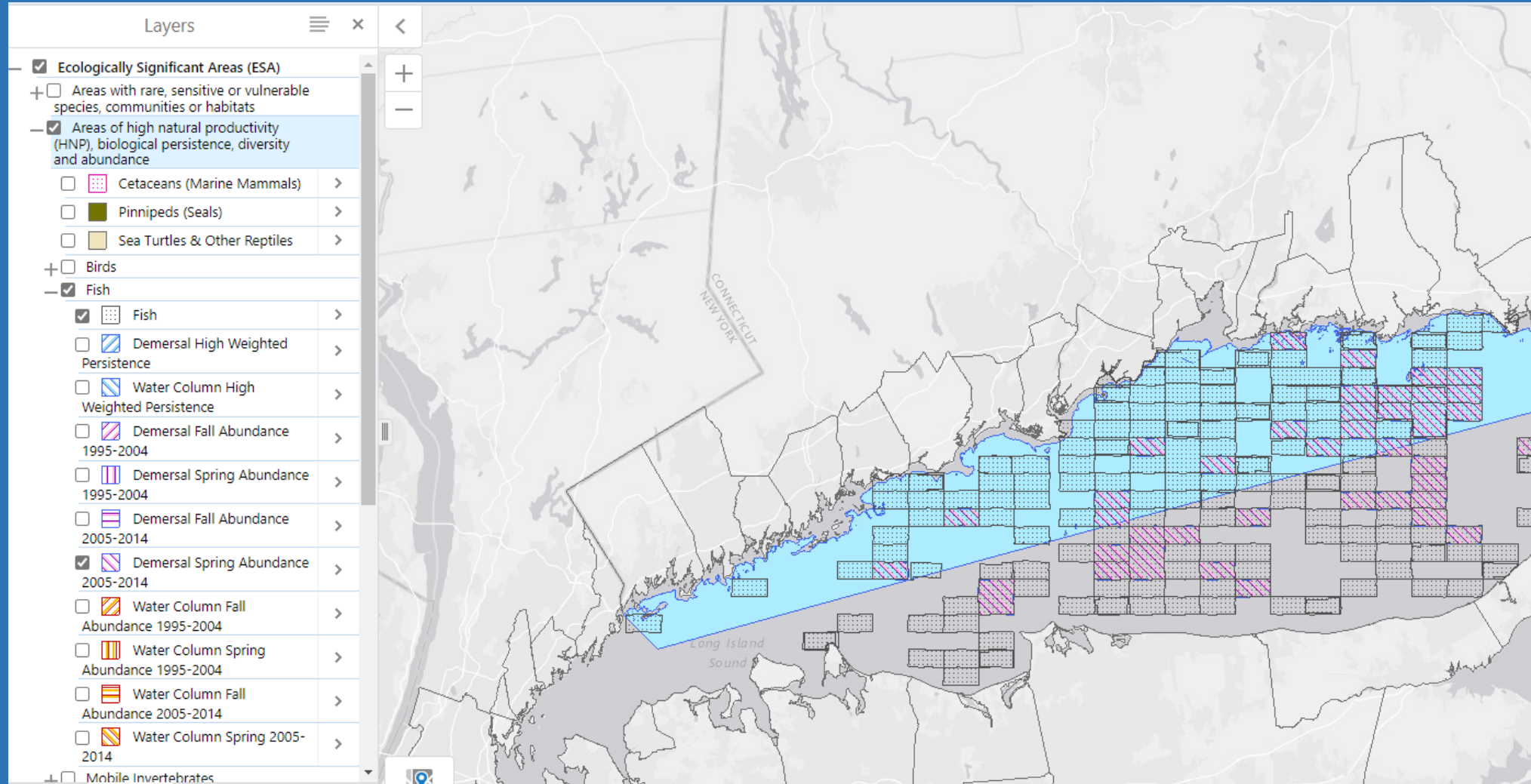


# Blue Plan Data Viewer:

Viewer : <https://cteco.uconn.edu/viewer/index.html?viewer=blueplan>

Many layers provide multiple levels of detail.

“Overall” look at the Fish ESA as well assorted breakdowns



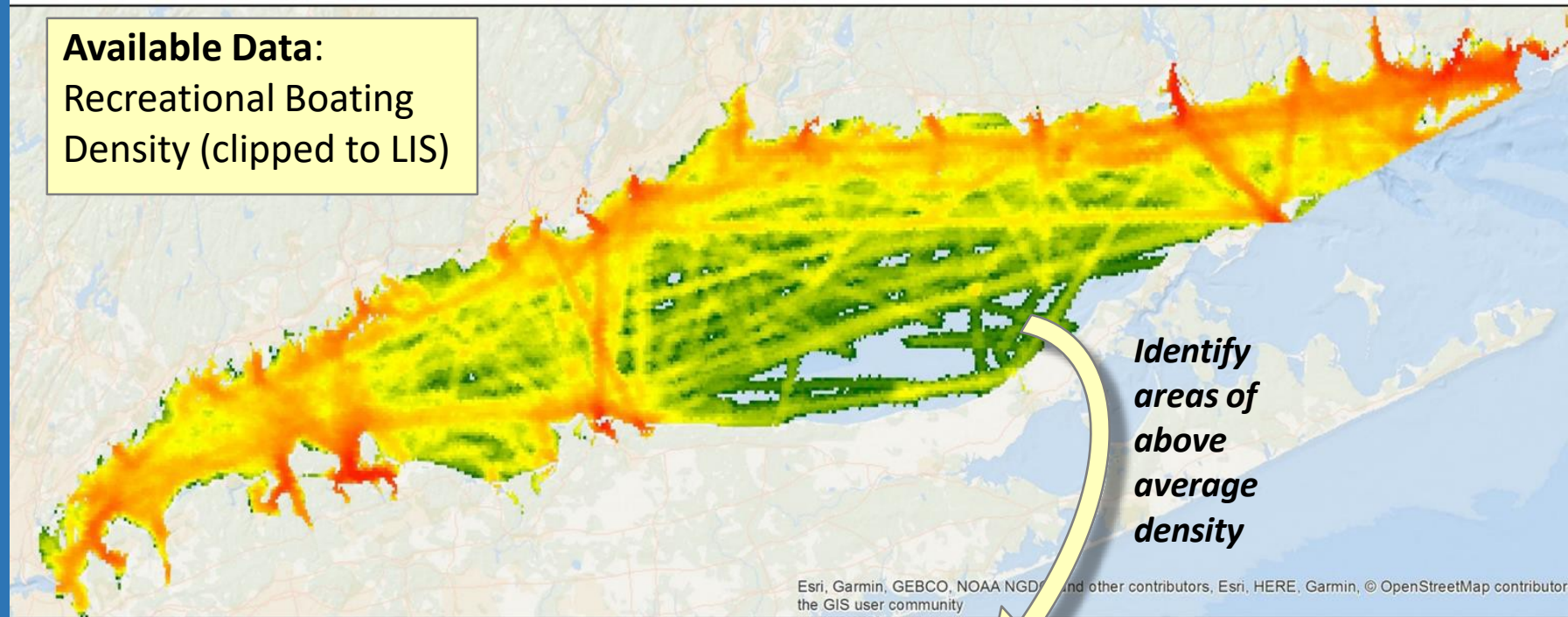
# Data and the Blue Plan - Connections

Can be a stand-alone source of info but....

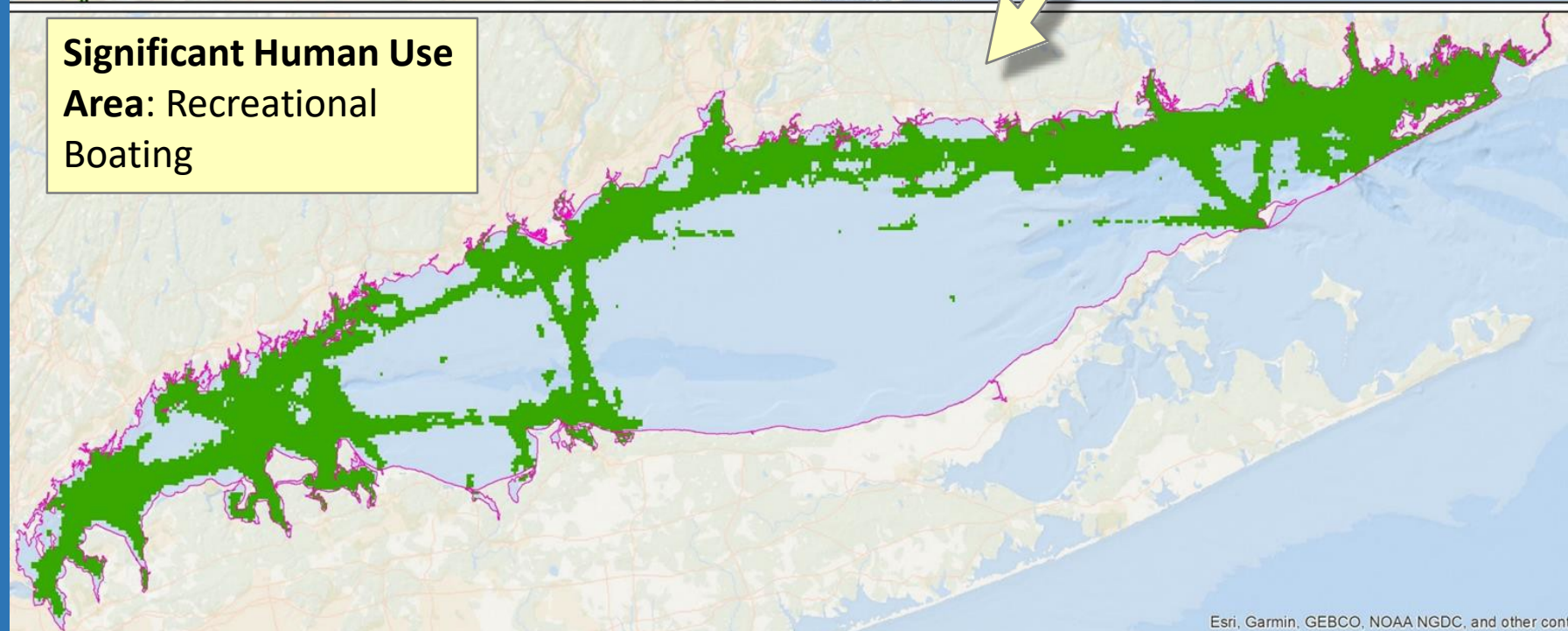
- Support project proponent and regulatory needs

Definitions as important as mapped extent

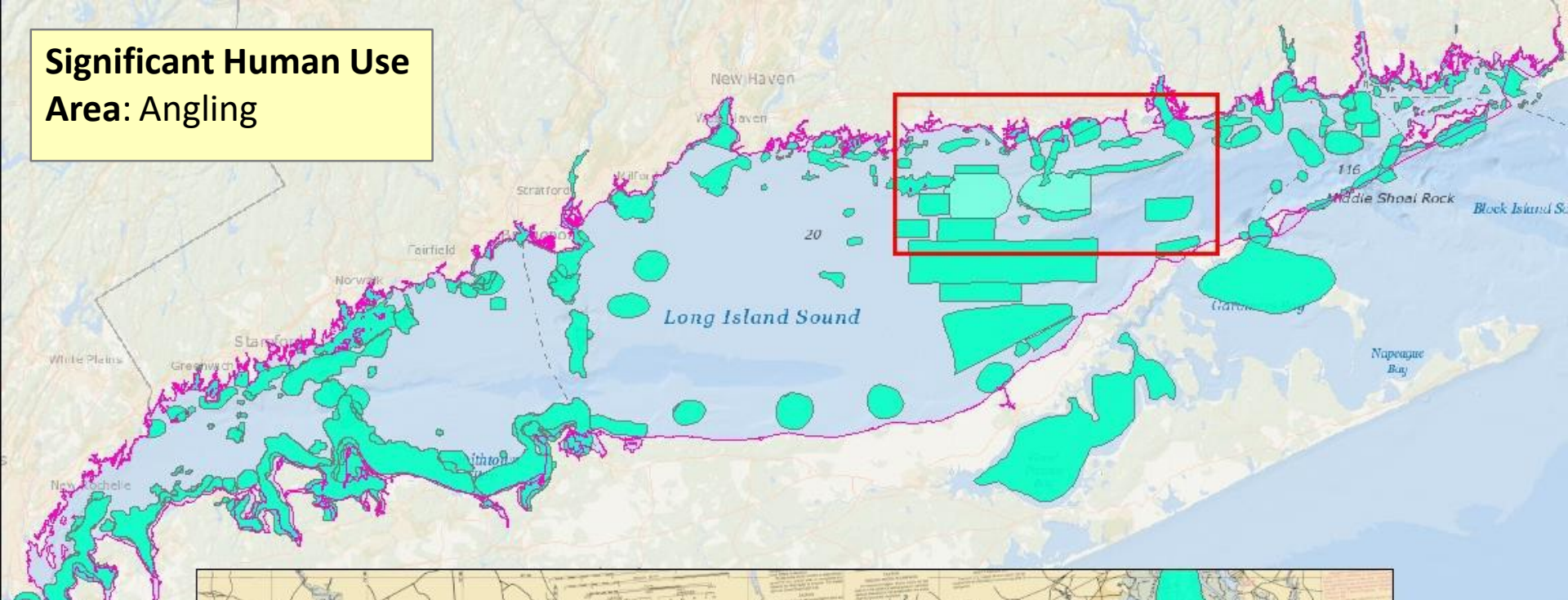
**Available Data:**  
Recreational Boating  
Density (clipped to LIS)



**Significant Human Use Area: Recreational Boating**

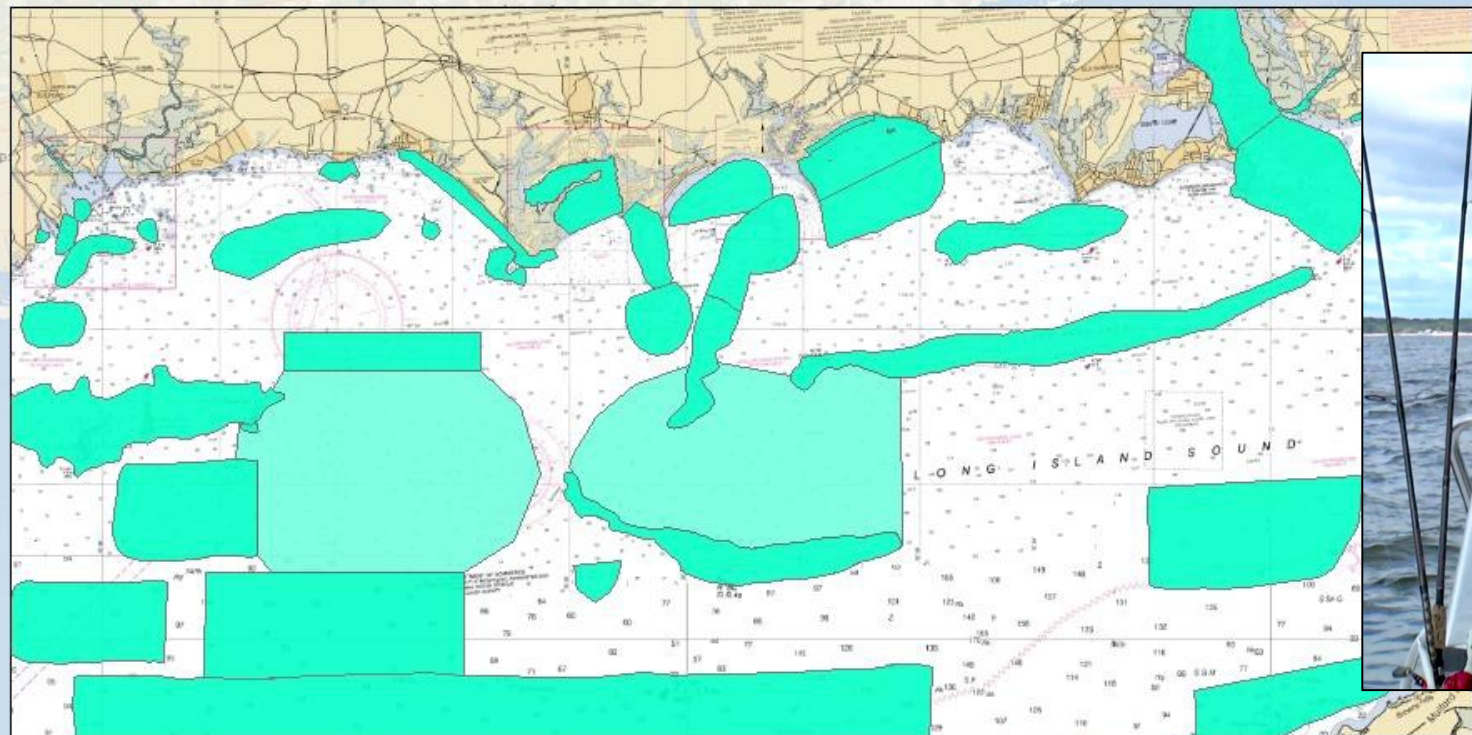


**Significant Human Use  
Area: Angling**



**Siting and Performance  
Standard:**

*Permanent displacement of recreational fishing and related activity by other activity or permanent structures shall be avoided to the maximum extent practicable.*

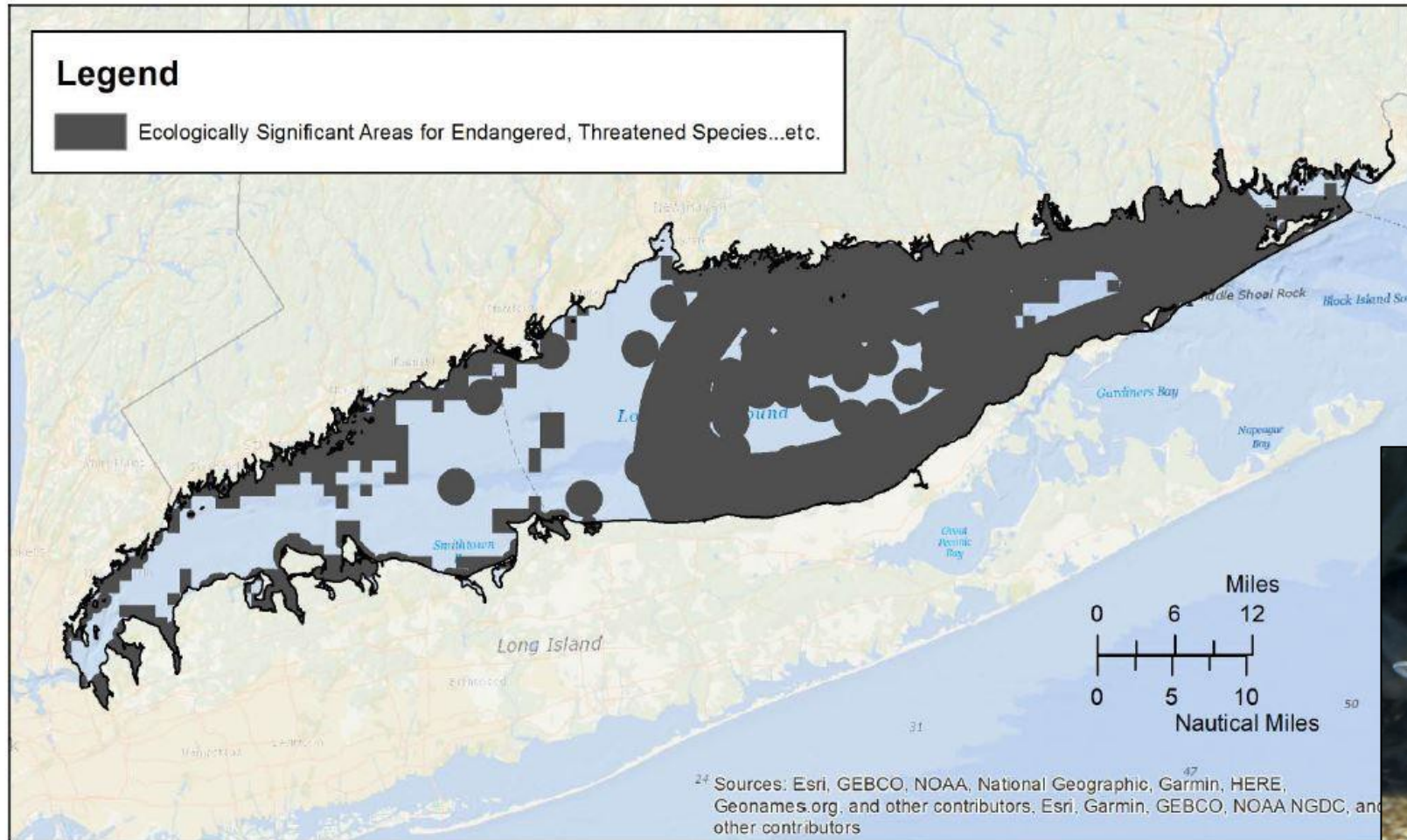


# DRAFT Ecologically Significant Area Map: Endangered, Threatened, and Species of Concern



Siting and Performance Standard:

*No specific standards applicable. General policies apply. Comply with applicable state and federal policies to avoid adverse impacts to designated species and habitats*





# NOAA Program Change



OFFICE FOR COASTAL MANAGEMENT  
Coastal Zone Management Act  
Program Change Portal

[PROGRAM CHANGE REQUESTS](#) [PROGRAM OVERVIEW](#)

## Coastal Zone Management Act Program Changes

State programs are not static – laws and issues change. NOAA approval is required for the establishment of a state management program.

[LEARN ABOUT PROGRAM CHANGES](#)

Change Requests 1193

- Filter by Program -

- Filter by Status -

Filter by Keyword

[CLEAR](#)

File Number	State Program	Status	Description	Public Comments Close
<a href="#">GA-2021-1</a>	Georgia	Under Review <a href="#">VIEW &amp; COMMENT</a>	This program change request includes changes to the following program policies, including enforceable policies: Historic Areas Act, Safe Drinking Water Act regulations, Shore ... <a href="#">read full description</a>	9/9/2021
<a href="#">CA - BCDC-2021-1</a>	San Francisco Bay Conservation and Development Commission	Approved	San Francisco Bay Plan Amendment (BPA) No. 1-20 amended the San Francisco Waterfront Special Area Plan General Policy 10 regarding mooring of historic ships and Geographic-spe... <a href="#">read full description</a>	4/16/2021
<a href="#">FL-2021-1</a>	Florida	Approved	The enclosed documents contain the annual program change request for concurrence from the Office for Coastal Management to update the Florida Coastal Management Program (FCMP)... <a href="#">read full description</a>	5/28/2021

Subscribe to program change updates.

[SIGN UP](#)

### Program Manager Staff

Do you need to submit a program change?

[REQUEST AN ACCOUNT](#)

[SIGN IN](#)

# Looking forward:

- Plan data and guidance already benefiting permitting and planning efforts
- A living document – opportunity to update data and process
  - Advisory Committee continues quarterly
  - Annual public hearing
  - Mandatory 5-year review (minimum)

- Advisory Committee Feedback
  - Roles and Responsibilities of BPAC
    - Advise Commissioner
    - Stakeholder engagement
  - Schedule and format of future meetings
    - Virtual v. in-person (locations?)
    - Daytime, evening
  - Thoughts on implementation
  - Plan and Data Updates



# Contact:

[DEEP.BluePlanLIS@ct.gov](mailto:DEEP.BluePlanLIS@ct.gov)

or

CT DEEP/LWRD Blue Plan Comments

79 Elm Street

Hartford, CT 06106

Please visit the Blue Plan website at

[www.ct.gov/deep/LISBluePlan](http://www.ct.gov/deep/LISBluePlan)



Connecticut Department of Energy and Environmental Protection

