

Climate Change in Connecticut GC3 Public Forum Kickoff Meeting September 21, 2020

Connecticut Department of Energy and Environmental Protection



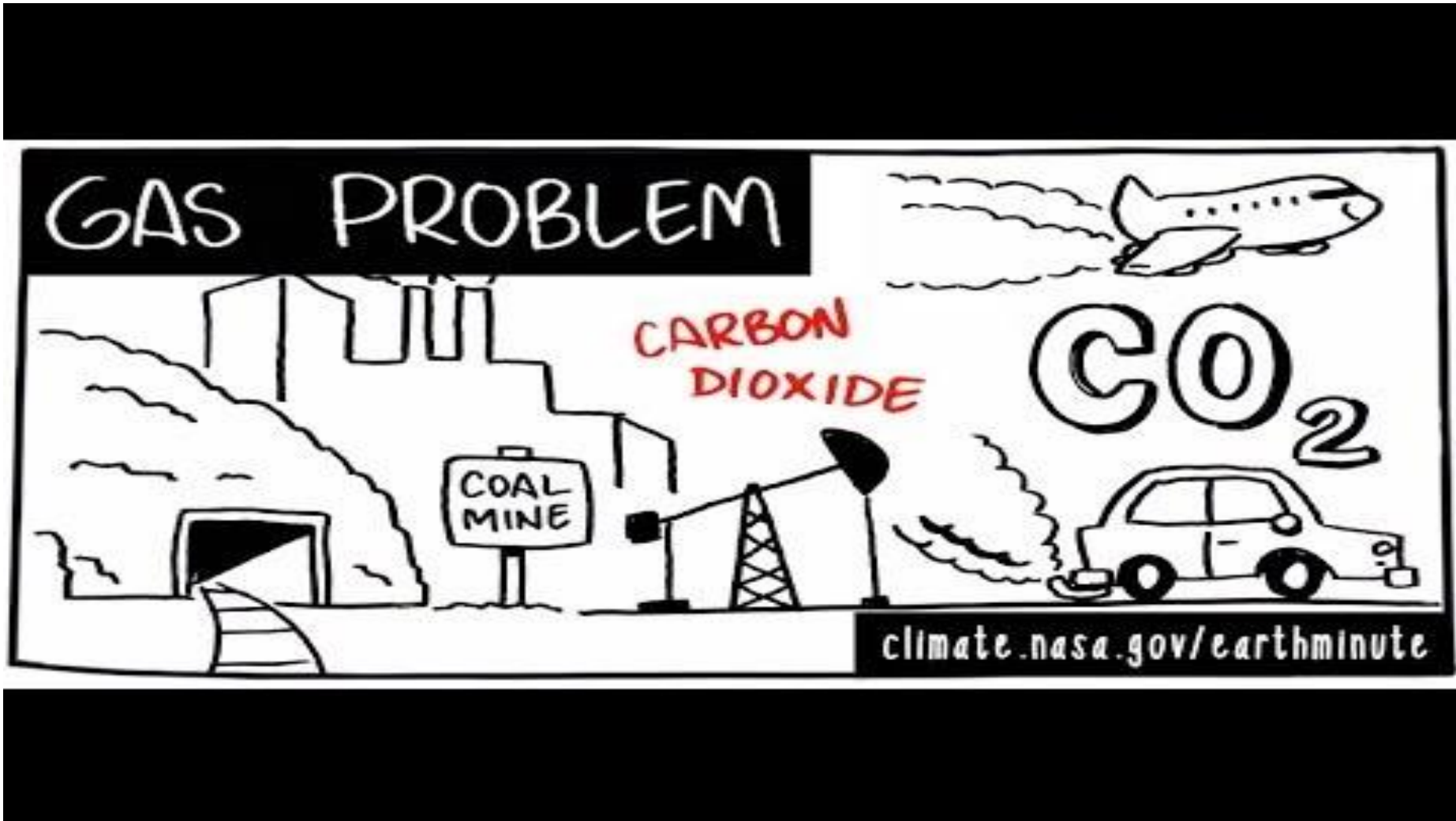
Listen to the Science on COVID and Climate



Conn. Gov. Ned Lamont speaks in front of Pfizer's research and development lab in Groton Wednesday, July 22

TYLER RUSSELL / CONNECTICUT PUBLIC RADIO

Greenhouse Gas Emissions and Climate Change

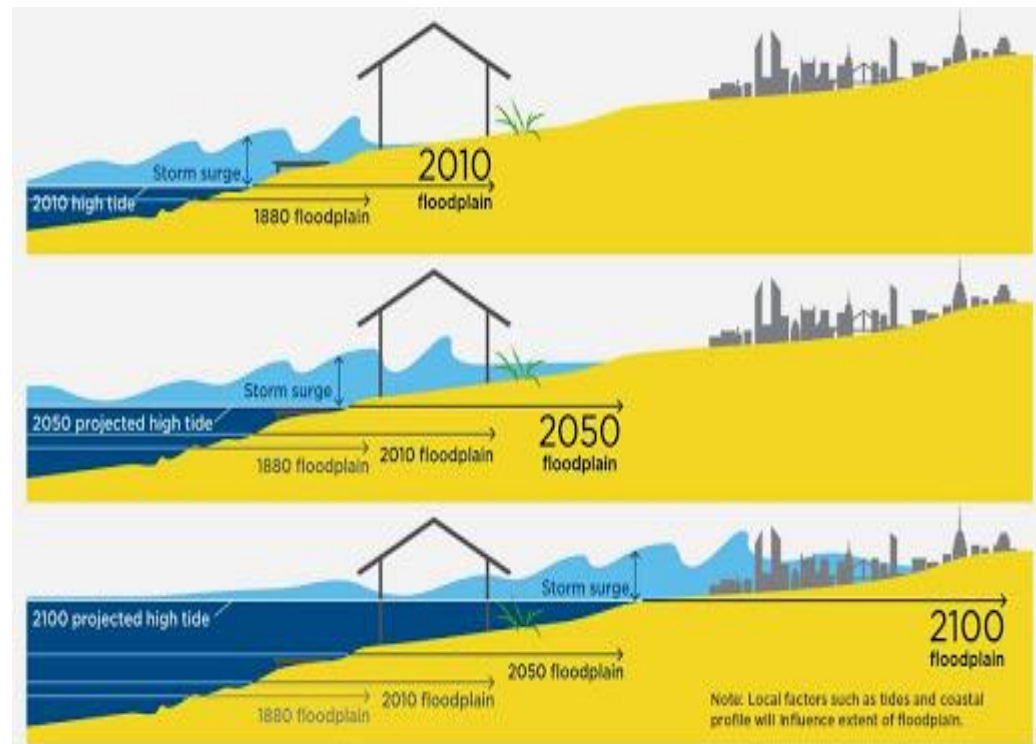


Global Warming and Sea Level Rise



Sea Levels are Rising and Storms Cause More Flooding, More Frequently

- CIRCA's recommended sea level change scenario is 0.5 m (1 foot 8 inches) higher than the national tidal datum in Long Island Sound by 2050
- “plan for up to two feet of sea level rise by 2050”
- Areas that flood today will flood more frequently going forward
- Coastal erosion will worsen



Sea level sets a baseline for storm surge—the potentially destructive rise in sea height that occurs during a coastal storm. As local sea level rises, so does that baseline, allowing coastal storm surges to penetrate farther inland. With higher global sea levels in 2050 and 2100, areas much farther inland would be at risk of being flooded. The extent of local flooding also depends on factors like tides, natural and artificial





Connecticut's Climate in 2050



Mitigation vs. Adaptation & Resilience

Mitigation – Reducing emissions of and stabilizing the levels of heat-trapping greenhouse gases in the atmosphere

...Mitigation is imperative to prevent the worst effects of climate change from happening.

But climate change has already altered Connecticut's environment and we will experience the changes projected by the year 2050 even with mitigation. We must adapt and become more resilient to that new normal for our state.

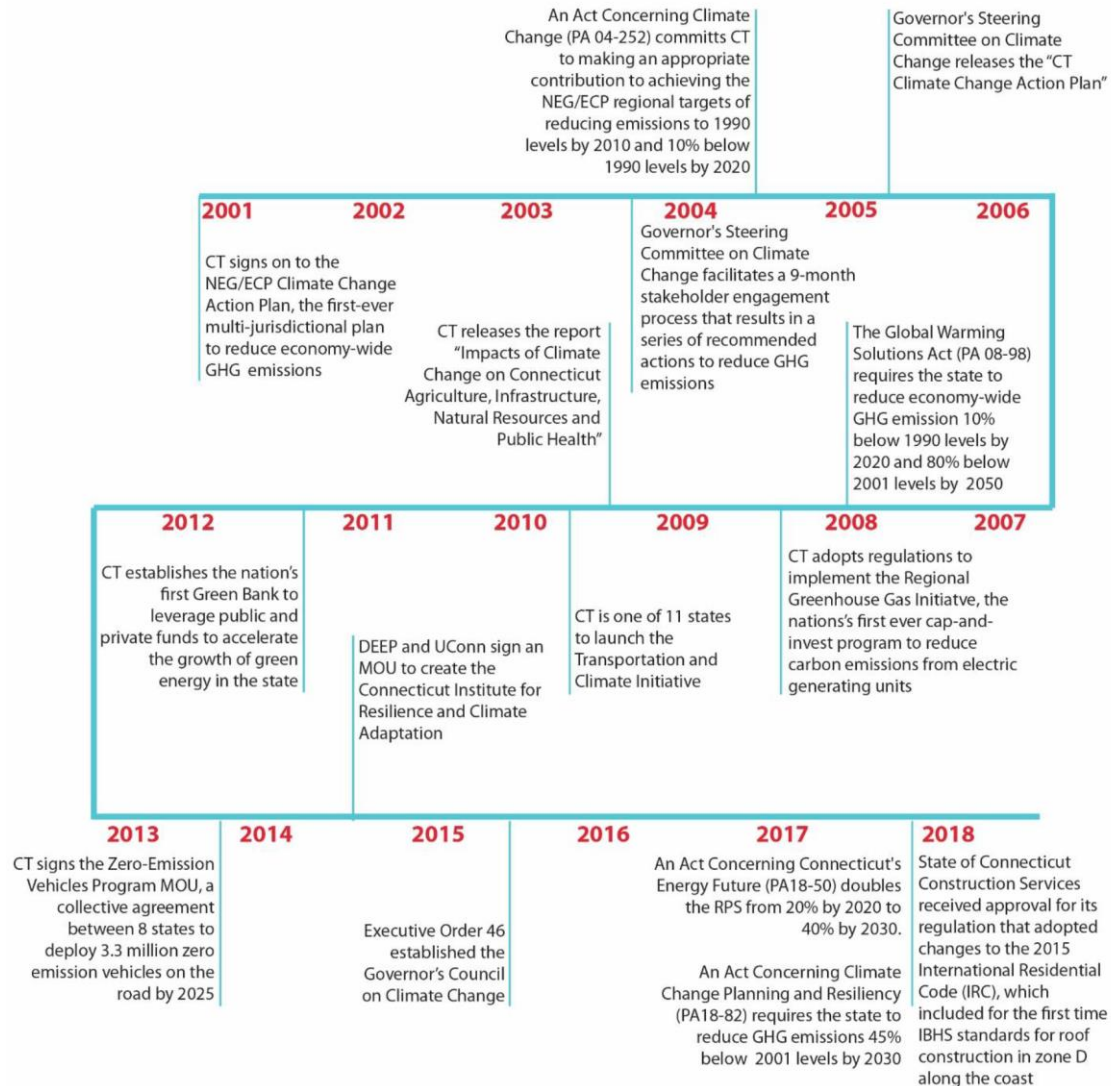
Adaptation means adjustment in natural or human systems in anticipation of or response to a changing environment in a way that effectively uses beneficial opportunities or reduces negative effects

Resilience means the ability to anticipate, prepare for, and adapt to changing conditions and withstand, respond to, and recover rapidly from disruptions.

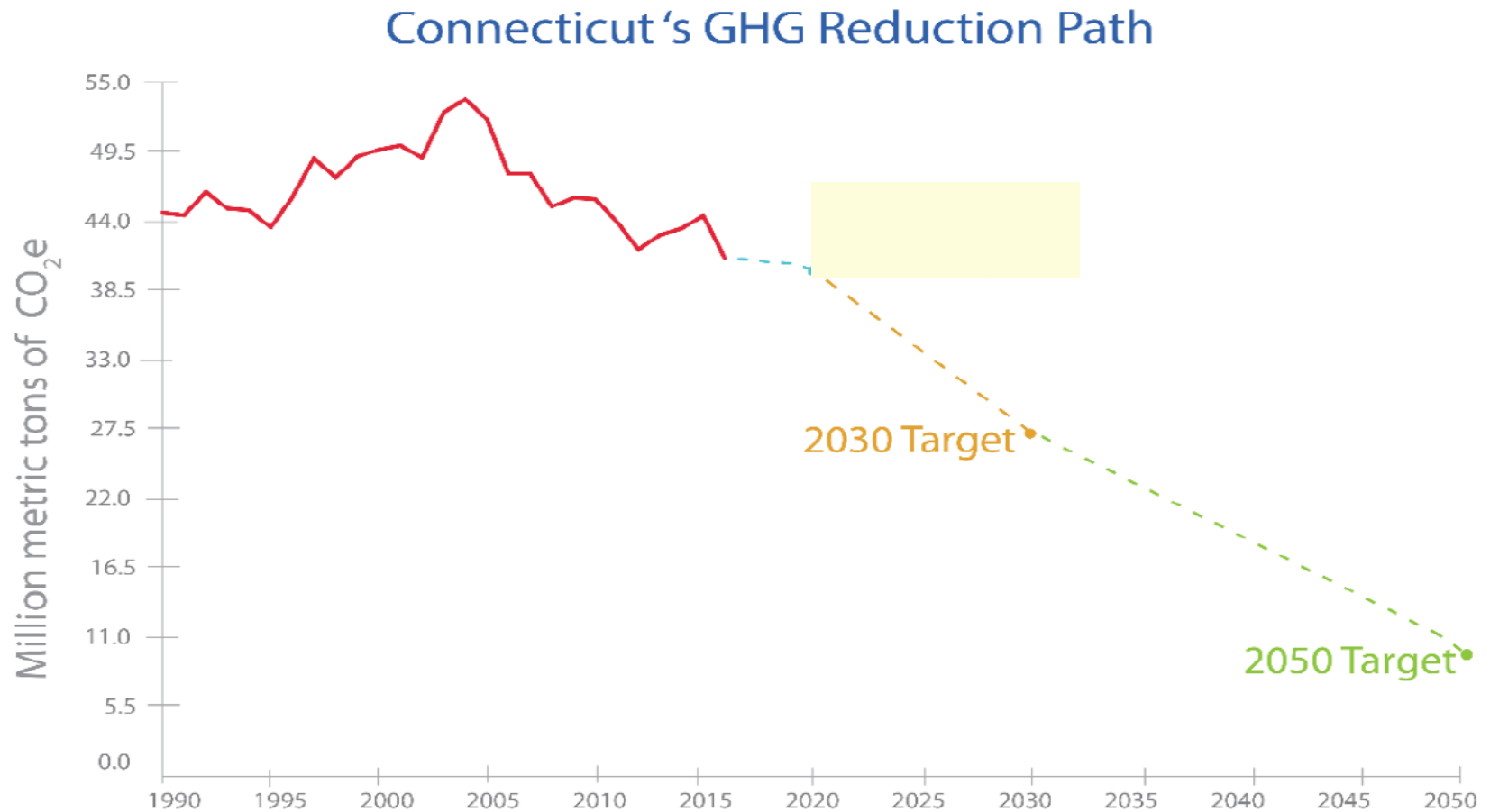
... this is why Connecticut has a policy that we must plan for up to 2 feet of sea level rise, for example.

CONNECTICUT

taking action on climate change



Connecticut's GHG Reduction Path



GC3 Background and Objectives

In September 2019, Governor Lamont rejuvenated the GC3 through Executive Order 3, expanded its scope to include both mitigation of carbon emissions and climate change adaptation.



Executive Order 3 Objectives

Objective 1:

1. Monitor and report on the state's implementation of the greenhouse gas emissions reduction strategies set forth in the GC3's December 2018 recommendations report. This includes tasks such as:

- evaluating **opportunities for equitably distributing the costs and benefits of implementing** the recommended GHG mitigation strategies, specifically addressing any disproportionate impact on environmental communities;
- assessing and describing how GHG reduction strategies are being **integrated into existing and new state agency planning efforts**;
- evaluating the **efficacy of existing and proposed policies and regulations** aimed at reducing GHG emissions; and
- identifying new and emerging GHG mitigation strategies that **maximize climate change adaptation and resiliency**.



Executive Order 3 Objectives

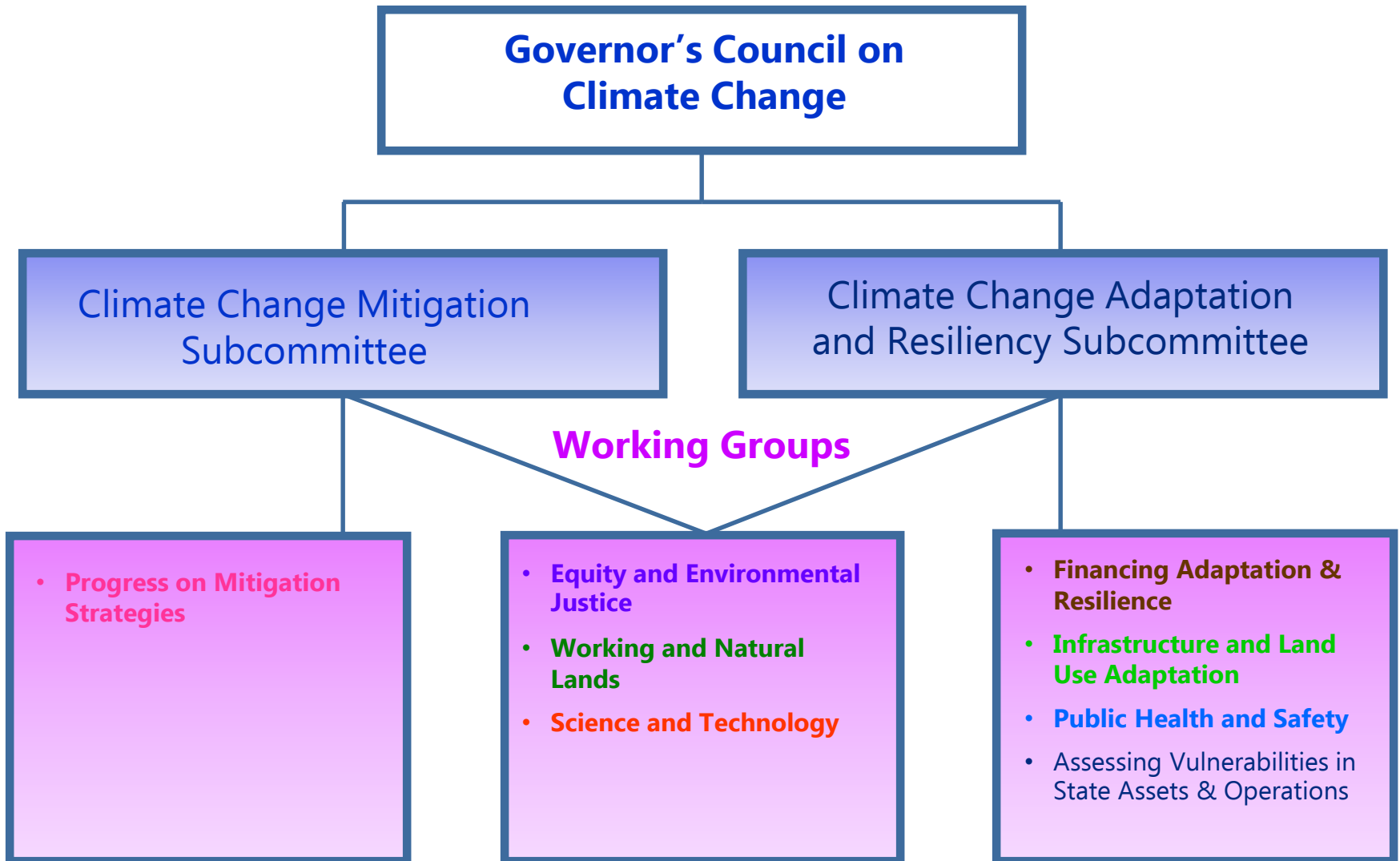
Objective 2:

Develop and implement adaptation strategies to assess and prepare for the impacts of climate change in areas such as infrastructure, agriculture, natural resources, and public health.

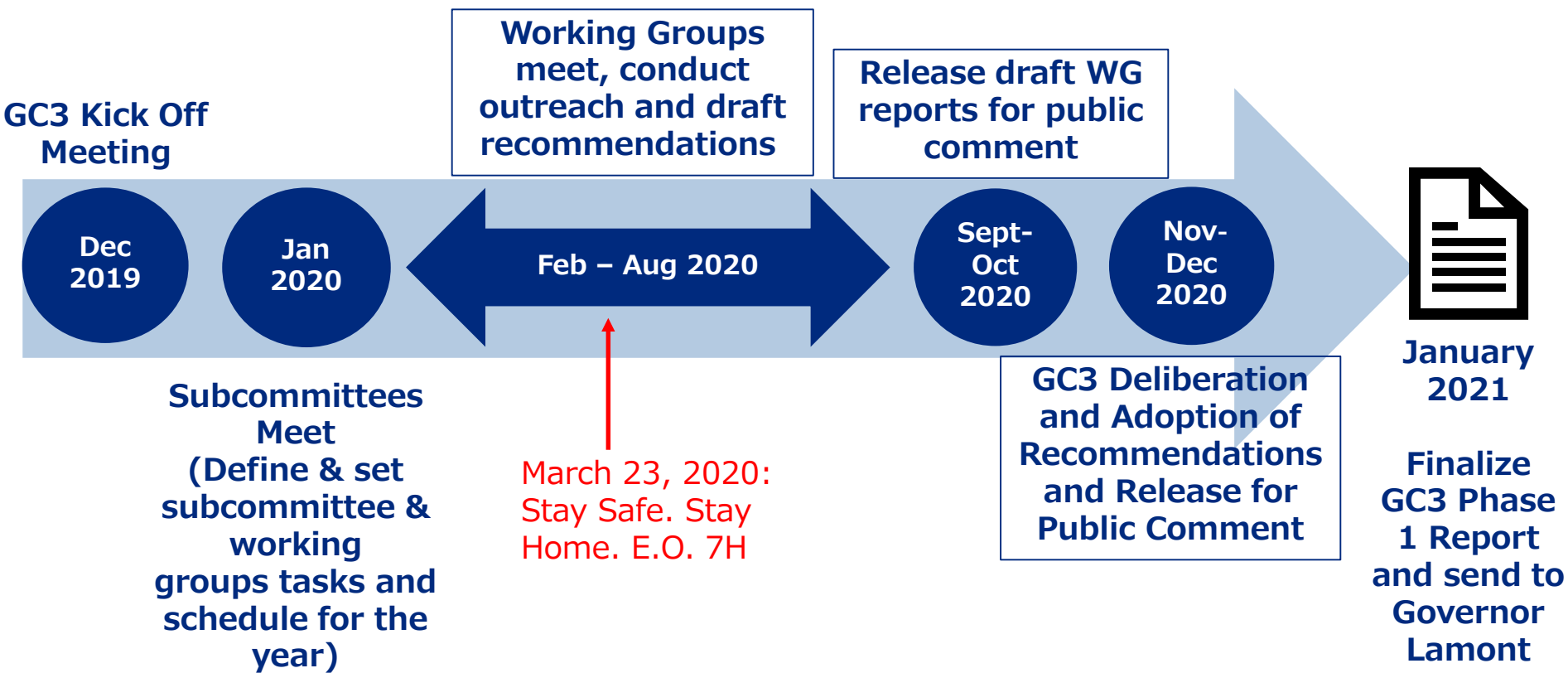
- By January 15, 2021 revising and updating the statewide **Adaptation and Resilience Plan**; and
- By December 31, 2021 reporting on the **alignment of climate change adaptation** strategies incorporated into **state agency planning processes and documents**.



GC3 Structure



Phase 1 Overall Timeline



Two Phase GC3 Process

- GC3 reporting process will continue through the end of 2021
- *Phase 1* interim reports provided to the Governor with initial recommendations by **January 15, 2021**
- *Phase 2* final report and recommendations provided by **December 31, 2021**



Public Review Period

How can you participate?

Join the Public Forums

- Join the online public forums scheduled each week until October 21, 2021.
- Each forum will focus on different working groups where they will present their recommendations and then break out into discussion groups where recommendations will be further reviewed with the public participants in small groups.
- Register for each forum using the links provided on the GC3 website. All forums on zoom and open to the public.
- All forum discussion will be captured in meeting minutes and presentations will be recorded and posted on the GC3 website for viewing at a later date.



Public Review Period

How can you participate?

Read the Working Group Reports

- Each working group prepared a report with the recommendations to allow for public review of their deliberations and findings.

Provide Written Comments

- Written comments on the working group reports will be accepted via email at deep.climatechange@ct.gov.



Connect with Working Group Members

- The working group members are volunteers representing their communities, organizations, and agencies and bringing their personal experience to this process. I know they want to hear from you.



Public Review Period

Meetings of the GC3, its subcommittees, and working groups continue to be noticed and are open to the public:

- **Governor's Council on Climate Change Meetings** (includes meetings for the current GC3 established by Executive Order No. 3 issued in 2019, as well as agendas and minutes for the previous iteration of the GC3 established in 2015)
- **GC3 Subcommittee and Working Group meetings** (to support the GC3 established by Executive Order No. 3 issued in 2019)
 - **2019 GC3 Subcommittee and Working Group Descriptions** 
 - **Public Notice: GC3 Working Group Draft Reports Public Review Period 09-22-2020 to 10-21-2020** 
 - **Public Forums: Agendas and Minutes for Public Forums on GC3 Working Group Reports during Public Review Period**
 - **GC3 Working Group Reports**



Meet the Working Groups

23 Members of the Governor's Council on Climate Change

100
Contributing Organizations



0 Carbon Target
For electricity sector by 2040



120+
Collaborative public meetings in 2020



- 7 Critical Working Group Focus Areas
- Progress on Mitigation Strategies
 - Working and Natural Lands
 - Science and Technology
 - Equity and Environmental Justice
 - Infrastructure and Land Use Adaptation
 - Public Health and Safety
 - Financing Adaptation & Resilience



162
Individual Working Group Members

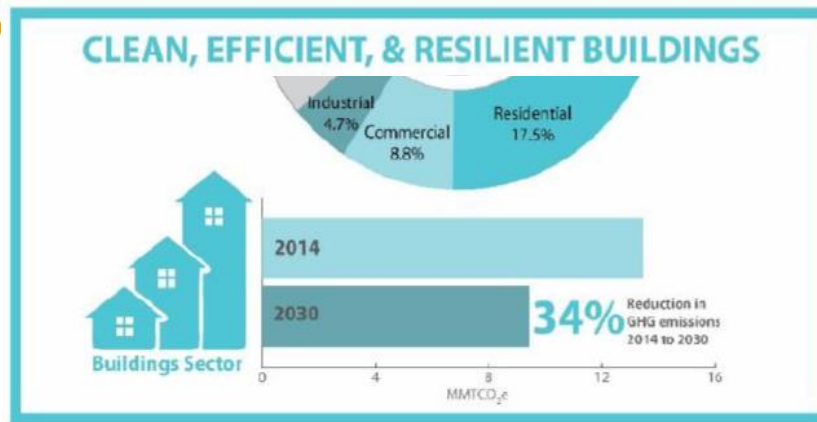
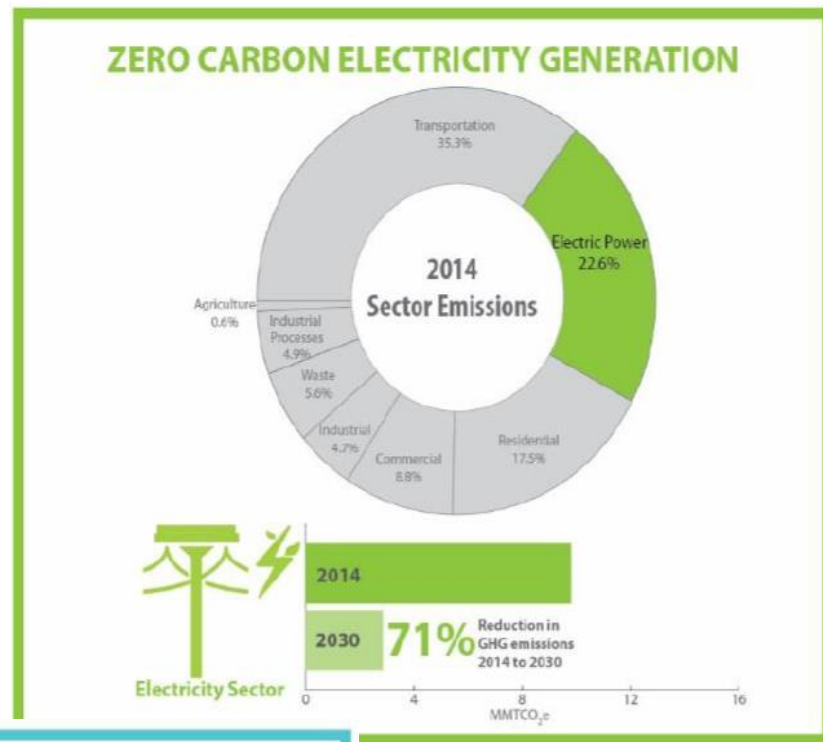
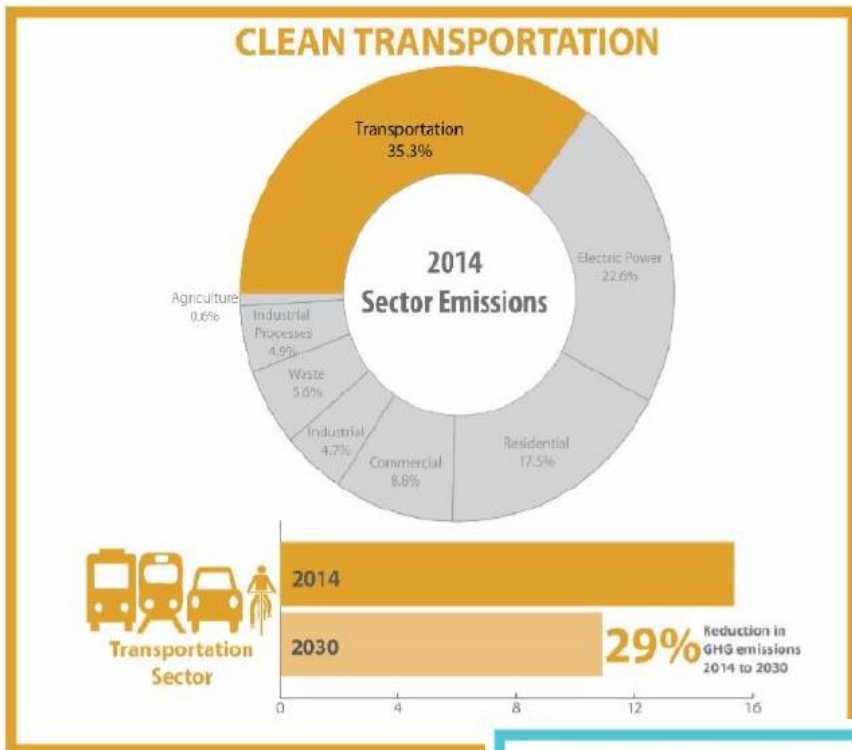


Progress update on
45% reduction
in CO₂ levels by 2030

1 Statewide Adaptation & Resilience Plan

Progress on Mitigation Strategies

Building a Low Carbon Future for CT: Achieving a 45% reduction by 2030;



Working and Natural Lands



- Recommendations for implementing the role of nature-based solutions (e.g., scaling up the preservation and restoration of forests and coastal wetlands, rivers, green and natural infrastructure, agricultural lands) in climate change **mitigation** and **adaptation**.
- Four areas of **Forests, Rivers, Wetlands** and **Agriculture**



Science & Technology

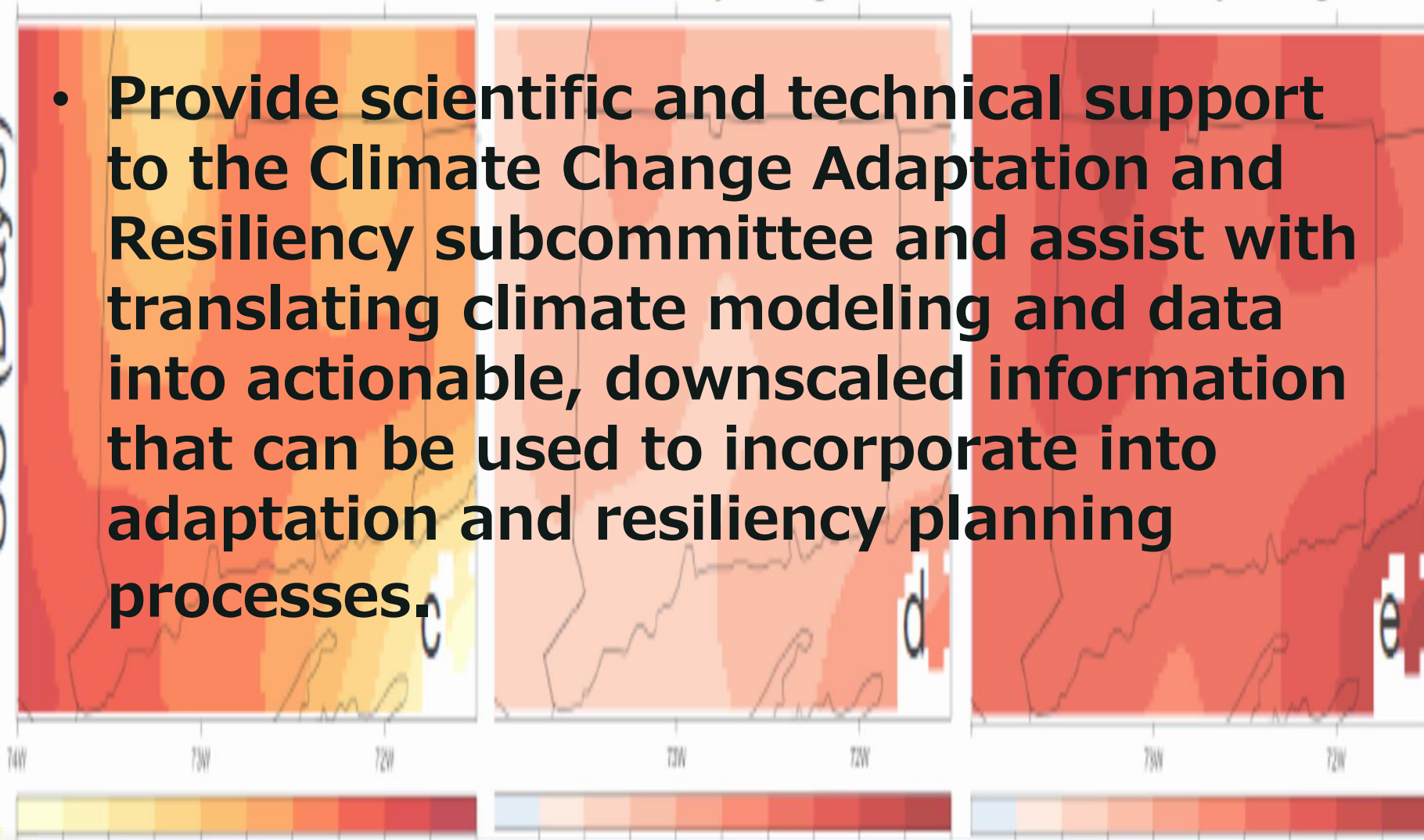
1970-1999

Mid-century change

Late-century change

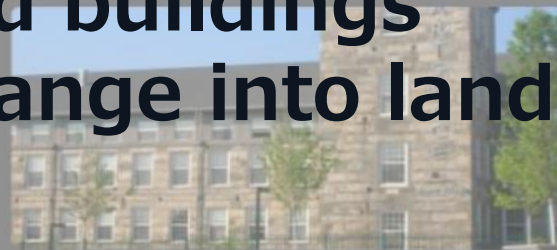
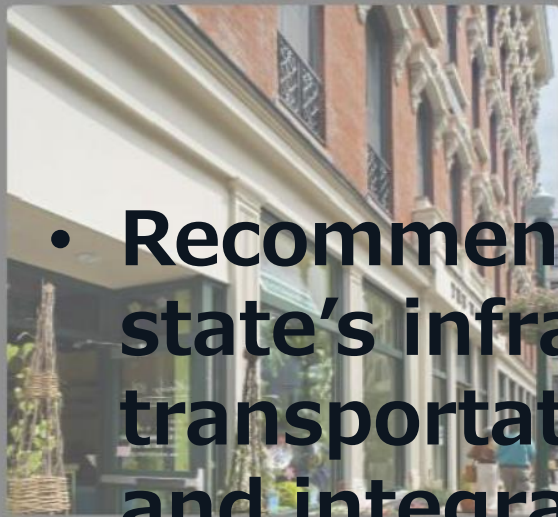
SU (Days)

- **Provide scientific and technical support to the Climate Change Adaptation and Resiliency subcommittee and assist with translating climate modeling and data into actionable, downscaled information that can be used to incorporate into adaptation and resiliency planning processes.**



Infrastructure and Land Use Adaptation

- **Recommendations for adapting our state's infrastructure in the areas of transportation, utilities and buildings and integrating climate change into land use planning and policies.**



Public Health and Safety Adaptation



**HEAT
ADVISORY**

THROUGH TUESDAY

- **Recommendations to address the health and safety impacts of climate change in the areas of Air Quality, Vector-borne Diseases, Extreme Events, Water-borne Illnesses, Nutrition, Food Security & Food Safety, and Mental Health and Well-being.**



Financing and Funding Adaptation and Resilience

- **Identify innovative and practical options to finance and fund climate adaptation and mechanisms to scale investment in the broad spectrum of climate resilience strategies and solutions..**



Equity and Environmental Justice

COMMUNITIES OF COLOR

Some communities of color living in risk-prone areas face cumulative exposure to multiple pollutants.

OLDER ADULTS

Older adults are vulnerable to extreme events that require evacuation.



- **Ensure communities most vulnerable to and disproportionately impacted by climate change will have the opportunity to meaningfully participate in the development of adaptation strategies that meet their needs and achieve equitable solutions and review and make new recommendations.**

CHILDREN

Children have higher risk of heat stroke and illness than adults.



Adults can lessen risk by monitoring exertion and hydration.

LOW INCOME COMMUNITIES

Low income families are at risk of physical and mental illnesses during flooding and in crowded shelter conditions.



Comprehensive disaster management can improve resiliency for people with limited resources.



Public Forum Schedule

9/21 4:30pm-6pm [Climate Change in Connecticut: Kickoff Meeting](#)

9/23 4pm-6:30pm [Progress on Mitigation Strategies Public Forum](#)

9/29 4pm-6pm [Working and Natural Lands Public Forum](#)

10/5 4:30pm-6pm [Science & Technology and Infrastructure & Land Use Adaptation Public Forum](#)

10/7 4pm-6pm [Public Health & Safety Adaptation and Financing & Funding Resilience and Adaptation Public Forum](#)

10/13 4:30pm-6:30pm [Equity and Environmental Justice Public Forum](#)

10/19 4:30-6pm [Public Review Period Wrap-up Meeting](#)

Questions

Dr. Rebecca French

Director of the Office of Climate Planning
Office of the Commissioner
Department of Energy and Environmental Protection

Rebecca.French@ct.gov