

**CT's Forest Action Plan
Update
GC3 WNLW Group
Forests Sub-Group**



May 21, 2021

Dan Peracchio, Forest Planner

Connecticut Department of Energy and Environmental Protection

What is the Forest Action Plan?

- Required by the Farm Bill since 2008
- Assessment and Strategy sections
 - Assessment
 - Forest conditions
 - Trends
 - Issues
 - Threats
 - Mapping
 - Strategy
 - Goals/priorities
 - Strategies
 - Implementation
 - Resources
 - Challenges



What is the Forest Action Plan?

- Three National Priorities
 - Conserve and manage working forest landscapes for multiple values and uses.
 - Protect forests from threats.
 - Enhance public benefits from trees and forests.



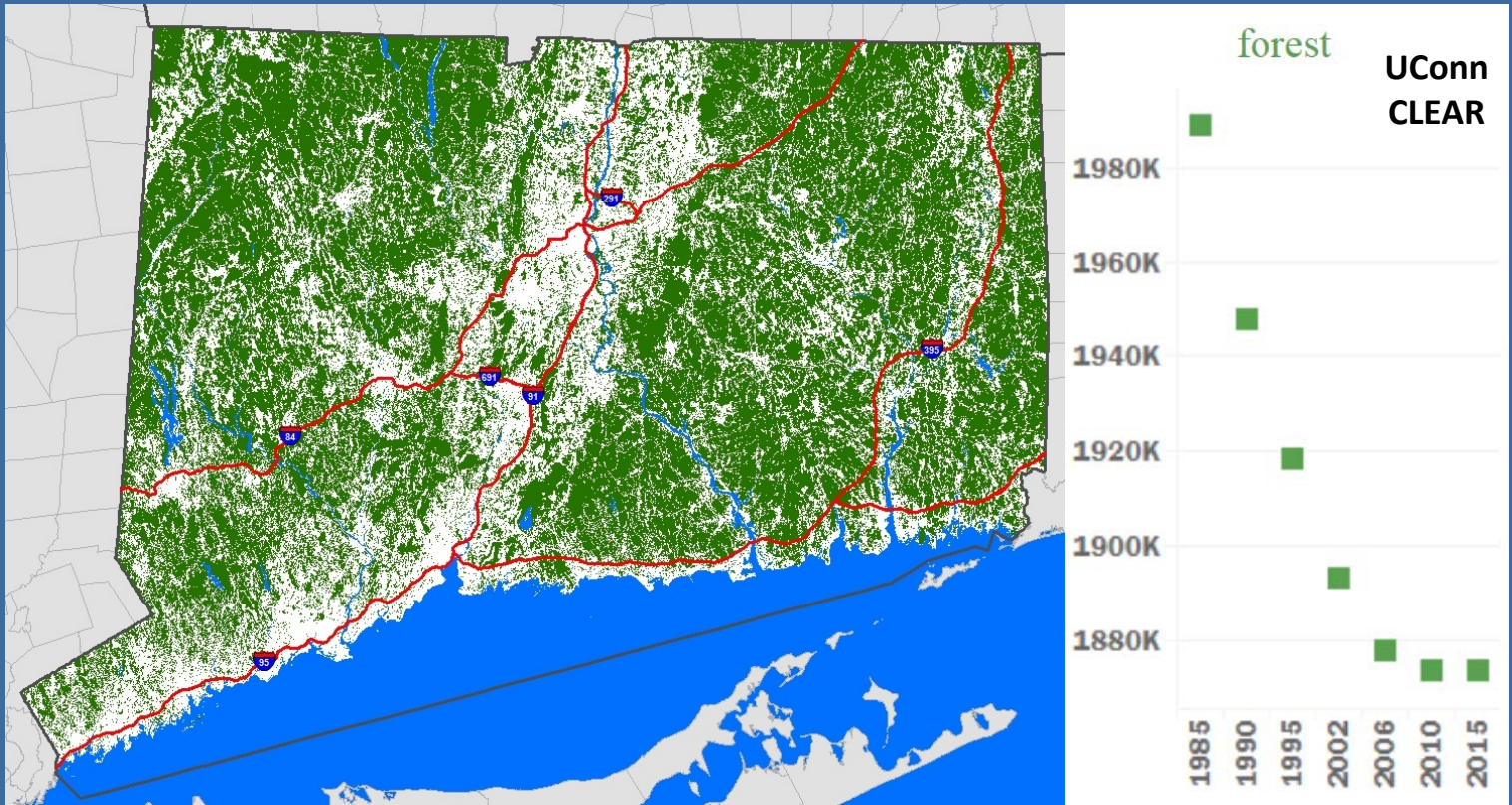
2020 Update

- Summary of Actions
 - Contract with CFPA
 - Online survey
 - Stakeholder meetings
 - Summary report
 - Compiling data
 - Input from DEEP programs
 - Writing and creating maps and graphics



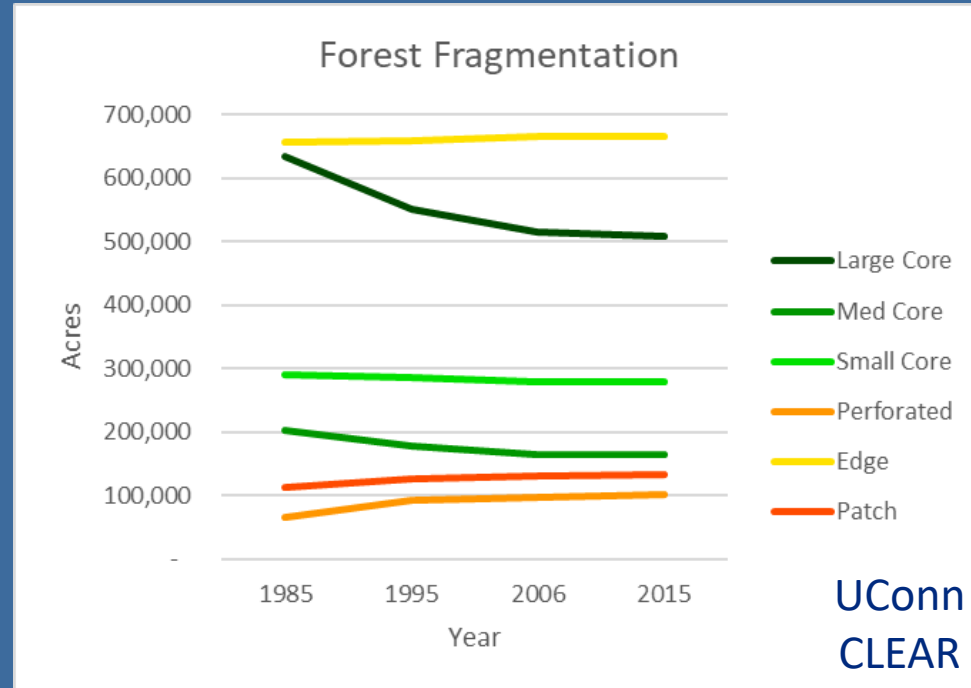
2020 Update

- Preliminary findings
 - About 61% forest - Stable 2010-2015 (UConn CLEAR)



2020 Update

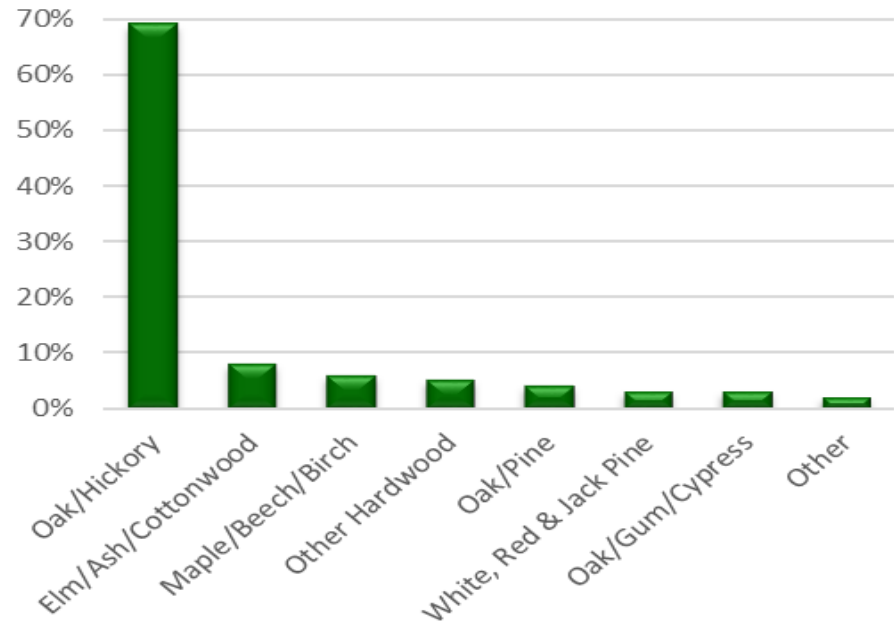
- Preliminary findings
 - 53% of CT's forest are core forest.
 - Larger blocks of core forest are generally more important.
 - Large core forest area is declining the fastest.



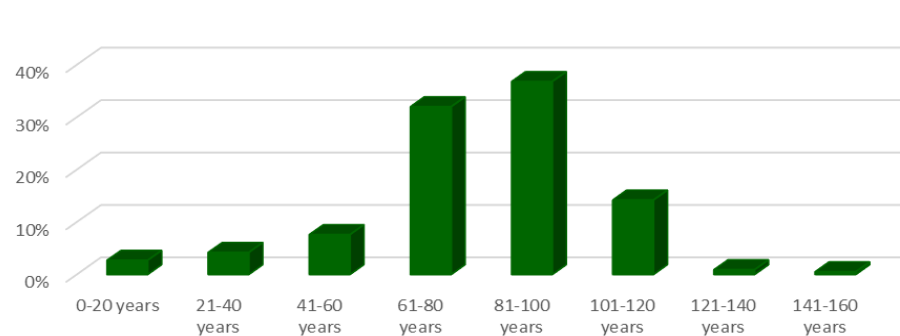
2020 Update

- Preliminary findings
 - Oak/Hickory most common type
 - Red maple most common tree
 - CT forests are older and even-aged
 - Increased mortality and less resilience

Forest Type Group



Forestland Age Classes



2020 Update

- Preliminary findings
 - Most of CT's forests are considered timberland.
 - Net growth decreased between 2013 and 2018 due to mortality.
 - Net growth still more than 5x removals.



2020 Update

- Preliminary findings
 - Climate change challenges
 - Shorter and warmer winters
 - Increased extreme precipitation and flooding events
 - Changes in drought and moisture stress
 - Enhanced fire risk
 - Intensified biological stressors
 - Changes to forest communities and species distribution



2020 Update

- Preliminary findings
 - Visions from 2010 plan affirmed by survey and roundtable discussions.
 - Extent of participation shows broad concern about and strong connection to CT's forests.
 - Highest interests in conservation, invasives, and recreation.
 - Input from natural resource professionals and the general public was mostly consistent throughout, with a couple of exceptions.



2020 Update

- Updated timeline and next steps
 - Ongoing
 - Input from DEEP staff
 - Writing/formatting the plan
 - Preparing maps and graphics
 - Draft for DEEP and USFS review in August
 - Draft for public comment in October
 - Revisions in November
 - Submit to USFS by end of November



