



Connecticut Department of Energy and Environmental Protection



Regulatory Updates for SIPRAC

13 October 2022

Merrily A. Gere

Stationary Source Control Group



Connecticut Department of Energy and Environmental Protection

New RCSA section 22a-174-4a, Repeal of RCSA section 22a-174-4

- Proposal was rejected at the July 27th Legislative Regulations Review Committee (LRRC) meeting.
- Corrections requested by the Legislative Commissioners' Office (LCO) attorneys were made to the proposal.
- The revised proposal was re-submitted to the LRRC on October 4, 2022. It will be heard on October 25, 2022.
- You can view the proposal here:

[eRegulations - Regulation Making Record For Tracking Number PR2021-016 \(ct.gov\)](#)



Two Proposals Related to the Reclassification

- RCSA section 22a-174-1: Definition of “severe non-attainment area for ozone”
 - Increase area to include all towns in Fairfield, New Haven and Middlesex counties plus Bridgewater and New Milford.
 - Approved by Office of Policy & Management. Waiting approval of Governor’s office.
- Amendments to RCSA sections 22a-174-22e and 22a-174-22f
 - Adds timing provisions for compliance by:
 - New major sources of NO_x created by the reclassification;
 - Sources newly subject to section 22a-174-22f; and
 - Sources that move from the 274 lb NO_x/ozone season day limit to the 137 lb NO_x /ozone season day limit of section 22a-174-22f.
 - About to be submitted to OPM/Governor’s office.



Proposals will be noticed together.

Connecticut Department of Energy and Environmental Protection

Questions?

Merrily A. Gere

Merrily.gere@ct.gov

Email me first. I am happy to call you if that's preferred.

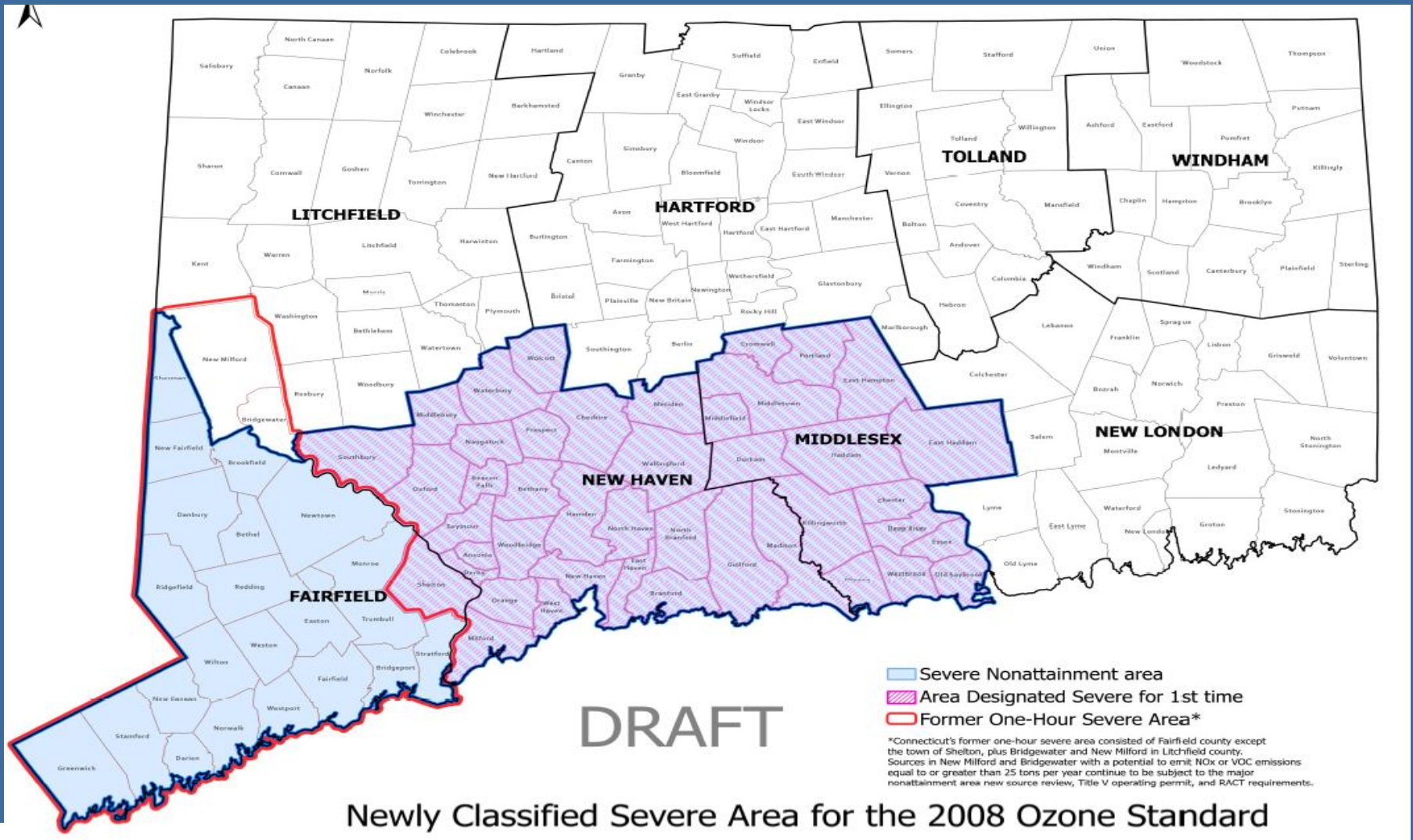


Revision of Section 22a-174-1

Current definition	New definition
<p>“Severe non-attainment area for ozone” means the towns of Bethel, Bridgeport, Bridgewater, Brookfield, Danbury, Darien, Easton, Fairfield, Greenwich, Monroe, New Canaan, New Fairfield, New Milford, Newtown, Norwalk, Redding, Ridgefield, Sherman, Stamford, Stratford, Trumbull, Weston, Westport and Wilton.</p>	<p>Severe non-attainment area for ozone” means the towns of Ansonia, Beacon Falls, Bethany, Bethel, Branford, Bridgeport, Bridgewater, Brookfield, Cheshire, Chester, Clinton, Cromwell, Danbury, Darien, Deep River, Derby, Durham, East Haddam, East Hampton, East Haven, Easton, Essex, Fairfield, Greenwich, Guilford, Haddam, Hamden, Killingworth, Madison, Meriden, Middlebury, Middlefield, Middletown, Milford, Monroe, Naugatuck, New Canaan, New Fairfield, New Haven, New Milford, Newtown, North Branford, North Haven, Norwalk, Old Saybrook, Orange, Oxford, Portland, Prospect, Redding, Ridgefield, Seymour, Sherman, Shelton, Southbury, Stamford, Stratford, Trumbull, Wallingford, Waterbury, Westbrook, West Haven, Weston, Westport, Wilton, Wolcott and Woodbridge.</p>



Severe Non-attainment Area for Ozone: Old and New



Newly Classified Severe Area for the 2008 Ozone Standard

