



Connecticut Department of
**ENERGY &
ENVIRONMENTAL
PROTECTION**

Ozone Event: May 21-22, 2022

Amanda Fritz



Summary

May 21, 2022

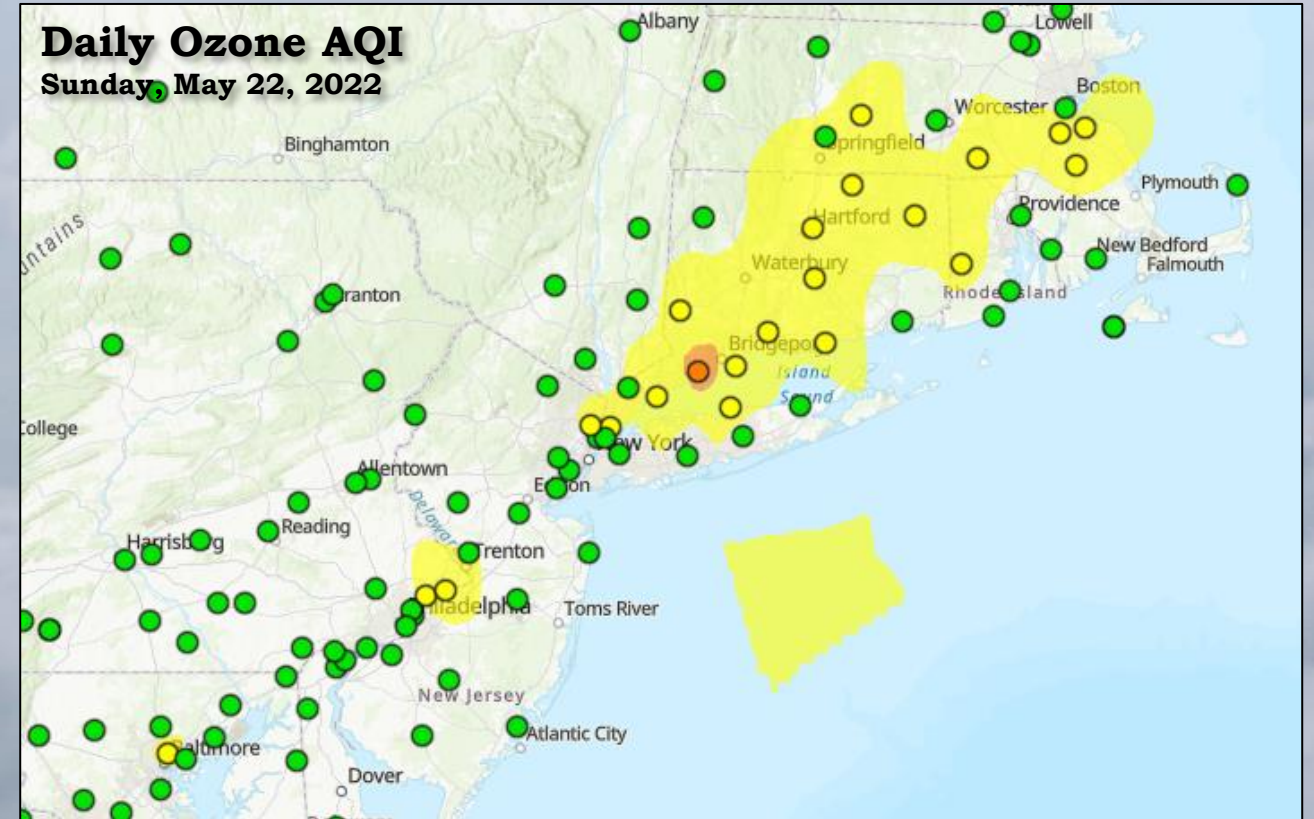
Date (LST)	Site AQS	Site	Max 8 hr Ozone (ppb)
5/21/2022	90050005	Cornwall	71
5/21/2022	421010024	NEA	68
5/21/2022	420170012	Bristol	67
5/21/2022	90011123	Danbury	67
5/21/2022	421010048	NEW	66
5/21/2022	90019003	Westport	65
5/21/2022	340030006	Leonia	64
5/21/2022	240053001	Essex	63
5/21/2022	90131001	Stafford	63
5/21/2022	240259001	Aldino	62
5/21/2022	90031003	East Hartford	62
5/21/2022	110010043	McMillan Reserv	62
5/21/2022	330115001	Miller State Pa	62
5/21/2022	360050133	Pfizer Lab	62
5/21/2022	340210005	Rider Universit	62
5/21/2022	110019999	Washington	62
5/21/2022	361192004	White Plains	62
5/21/2022	100031010	BCSP	61
5/21/2022	340070002	Camden Spruce S	61
5/21/2022	340150002	Clarksboro	61
5/21/2022	240150003	Fair Hill	61
5/21/2022	361030044	Flax Pond	61
5/21/2022	421010004	LABP	61
5/21/2022	100032004	MLK	61

May 22, 2022

Date (LST)	Site AQS	Site	Max 8 hr Ozone (ppb)
5/22/2022	90019003	Westport	71
5/22/2022	90013007	Stratford	69
5/22/2022	230090102	Bar Harbor - Ca	68
5/22/2022	90079007	Middletown	66
5/22/2022	361030044	Flax Pond	65
5/22/2022	90010017	Greenwich	65
5/22/2022	90090027	New Haven	64
5/22/2022	90031003	East Hartford	63
5/22/2022	90131001	Stafford	62
5/22/2022	90159991	Abington	61
5/22/2022	90011123	Danbury	58
5/22/2022	421010024	NEA	58
5/22/2022	230090103	Acadia NP - McF	57
5/22/2022	250213003	E. Milton - Blu	57
5/22/2022	250270024	Uxbridge	57
5/22/2022	420170012	Bristol	56
5/22/2022	90099002	Madison	56
5/22/2022	250212005	WeymouthFR	56
5/22/2022	250230005	Brockton	55
5/22/2022	340030006	Leonia	55
5/22/2022	360050133	Pfizer Lab	55
5/22/2022	440030002	W Greenwich	55
5/22/2022	250154002	WARE	55
5/22/2022	250130008	CHICOPEE	54



Ozone AQI Maps



CT Monitoring Site Design Value

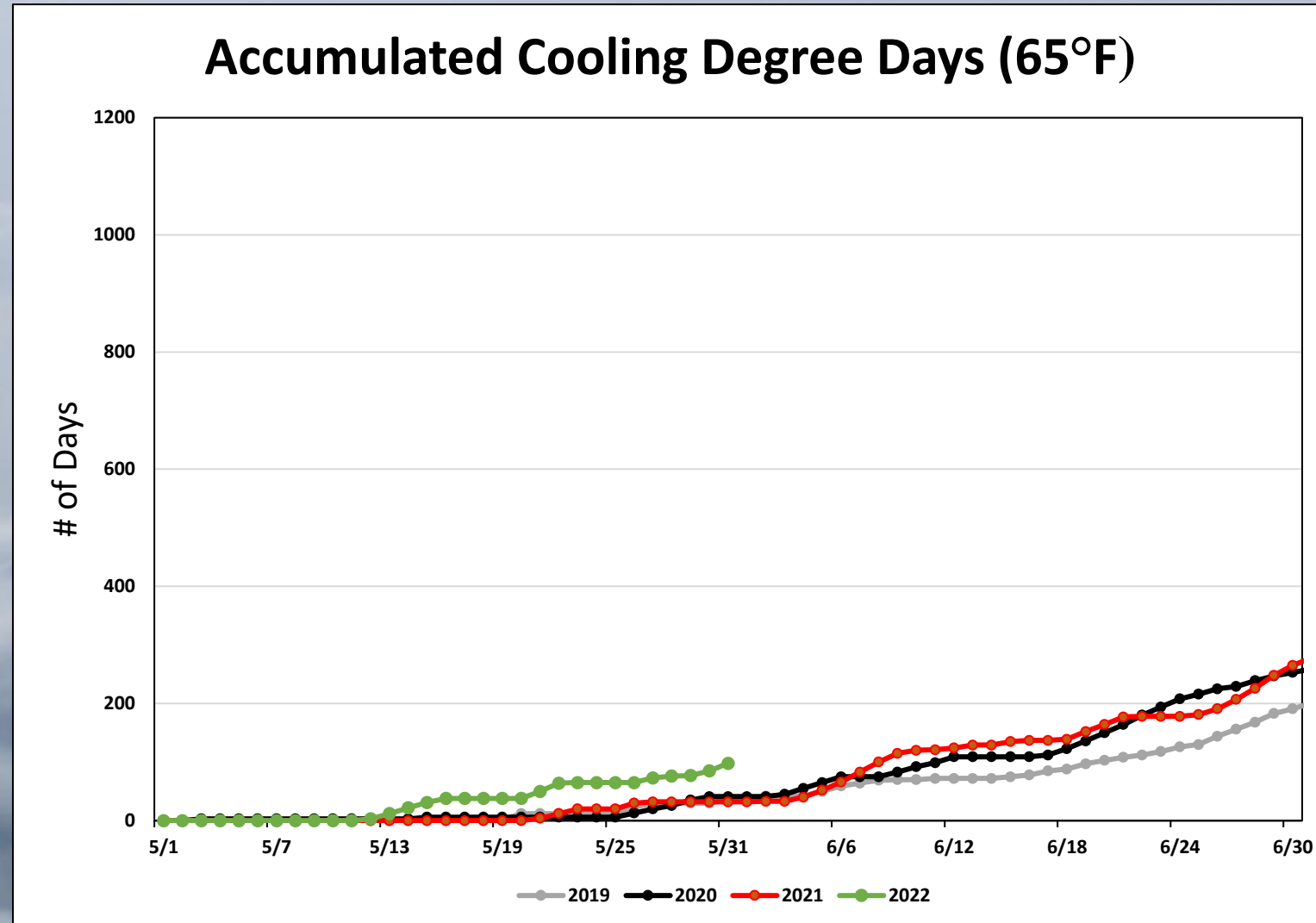
- Connecticut has 2 exceedance days through May 23, 2021.

		2022 Compliance Status								
		x = Violating NAAQS								
	Site Name	To Date: Prelim 2022 DV	2015 NAAQS	2008 NAAQS	1997 NAAQS	# Needed to Next NAAQS in Violation (key monitors in each NA are highlighted in RED)				
SWCT Portion of NYC Area	Danbury	65				4	more days >	74	ppb day(s) violate the	2015 NAAQS
	Greenwich	70				1	more days >	57	ppb day(s) violate the	2015 NAAQS
	Madison	72	X			4	more days >	64	ppb day(s) violate the	2008 NAAQS
	Middletown	67				3	more days >	65	ppb day(s) violate the	2015 NAAQS
	New Haven	64				4	more days >	73	ppb day(s) violate the	2015 NAAQS
	Stratford	72	X			3	more days >	65	ppb day(s) violate the	2008 NAAQS
	Westport	71	X			3	more days >	68	ppb day(s) violate the	2008 NAAQS
Greater CT	Cornwall	63				4	more days >	81	ppb day(s) violate the	2015 NAAQS
	East Hartford	63				4	more days >	82	ppb day(s) violate the	2015 NAAQS
	Groton	65				4	more days >	66	ppb day(s) violate the	2015 NAAQS
	Stafford	62				4	more days >	82	ppb day(s) violate the	2015 NAAQS
	Abington	61				4	more days >	82	ppb day(s) violate the	2015 NAAQS
Number of Exceedance Days to Date			2		The 1997 standard was repealed with the 2008 Implementation rule. Effective April 6, 2015					



CT Cooling Degree Days Update

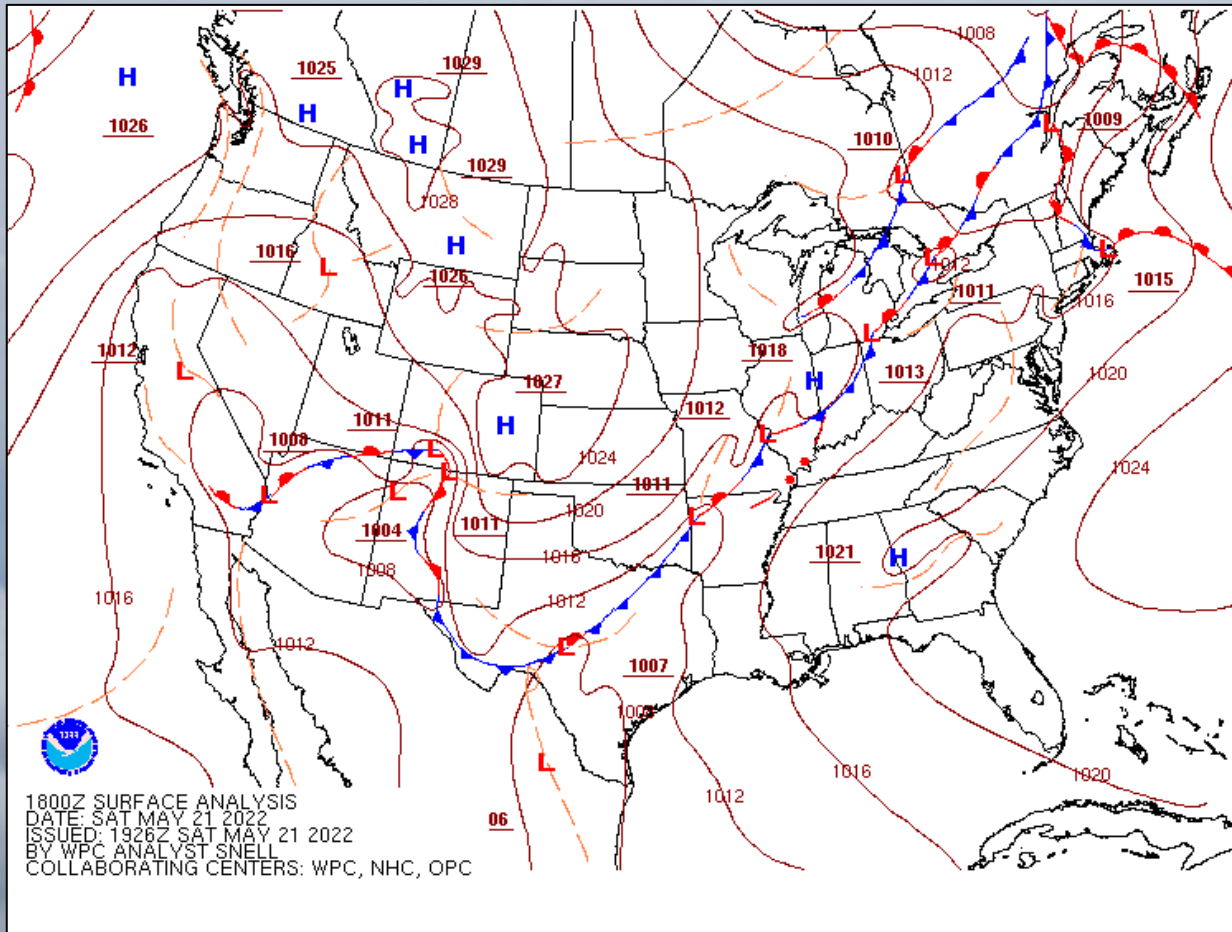
- A cooling degree day (CDD) is the number of degrees a day's average temperature is above 65° F.
- The first CDD for 2022 occurred on May 12th.
- Connecticut is starting off this ozone season warmer than previous years.



Surface Analysis Maps: 18Z

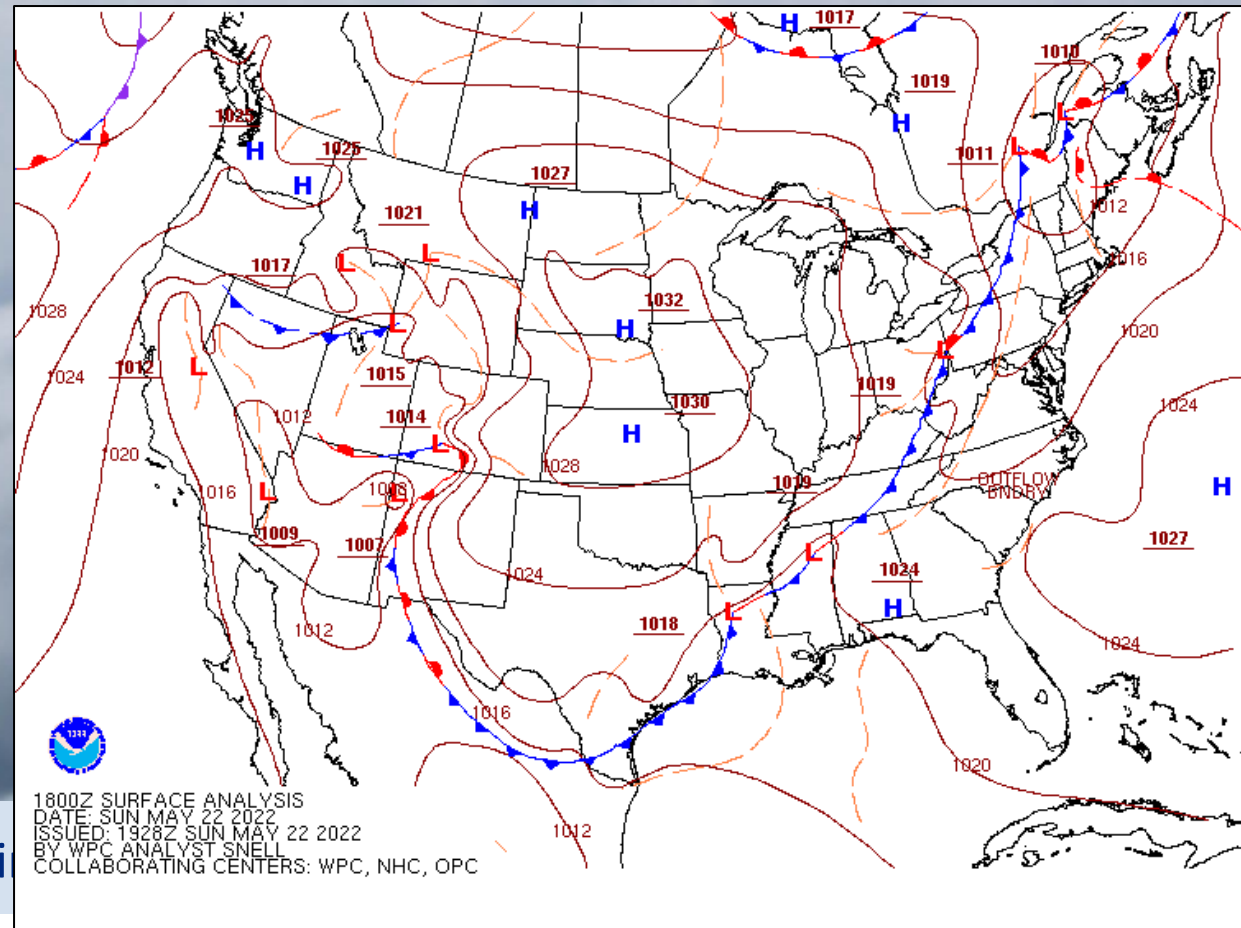
May 22, 2022

A cold front slowly approaches Connecticut in the afternoon.



May 21, 2022

A warm front stalls to our northeast, while another front stalls over the Great Lakes Region. Envi

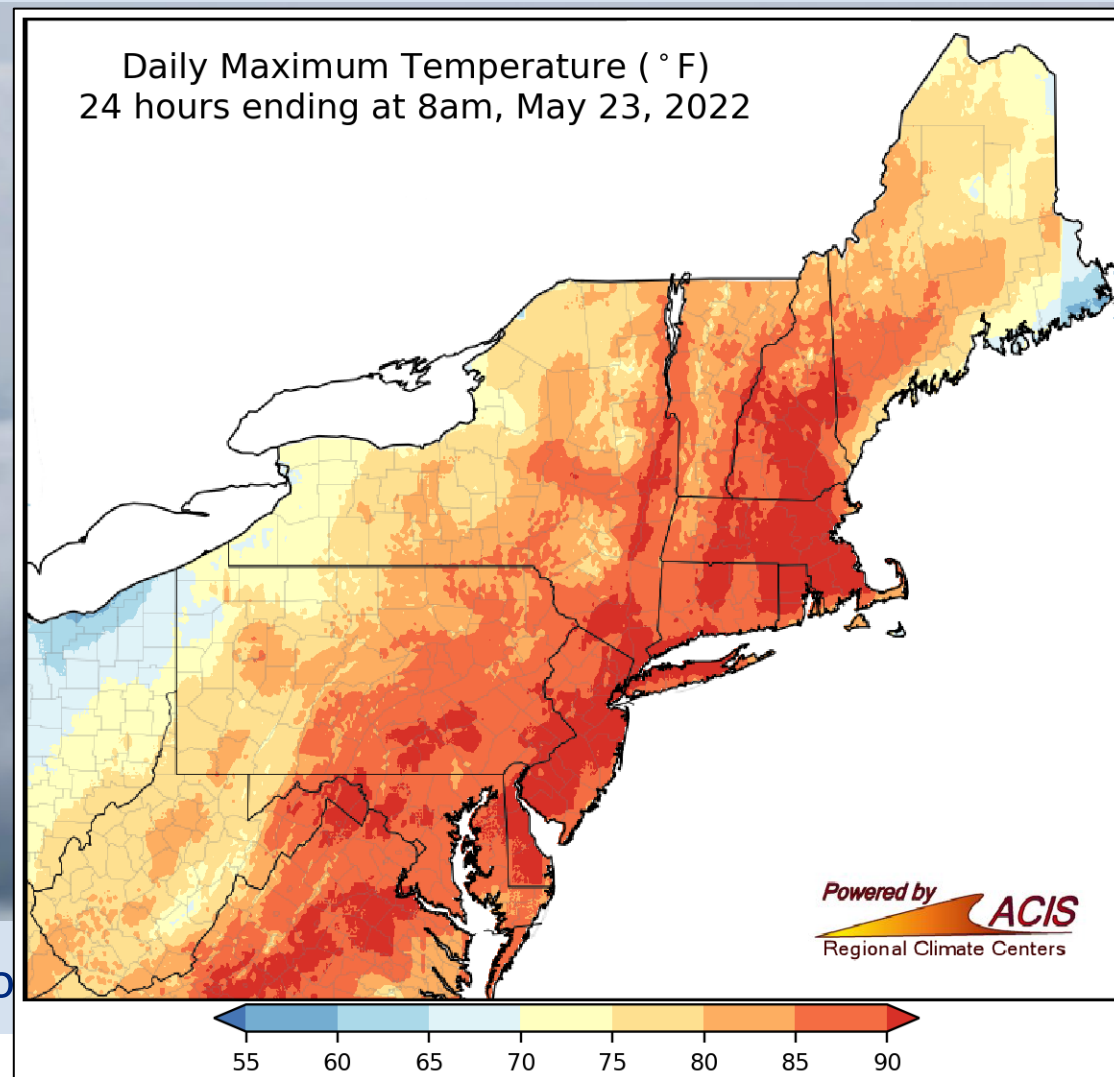
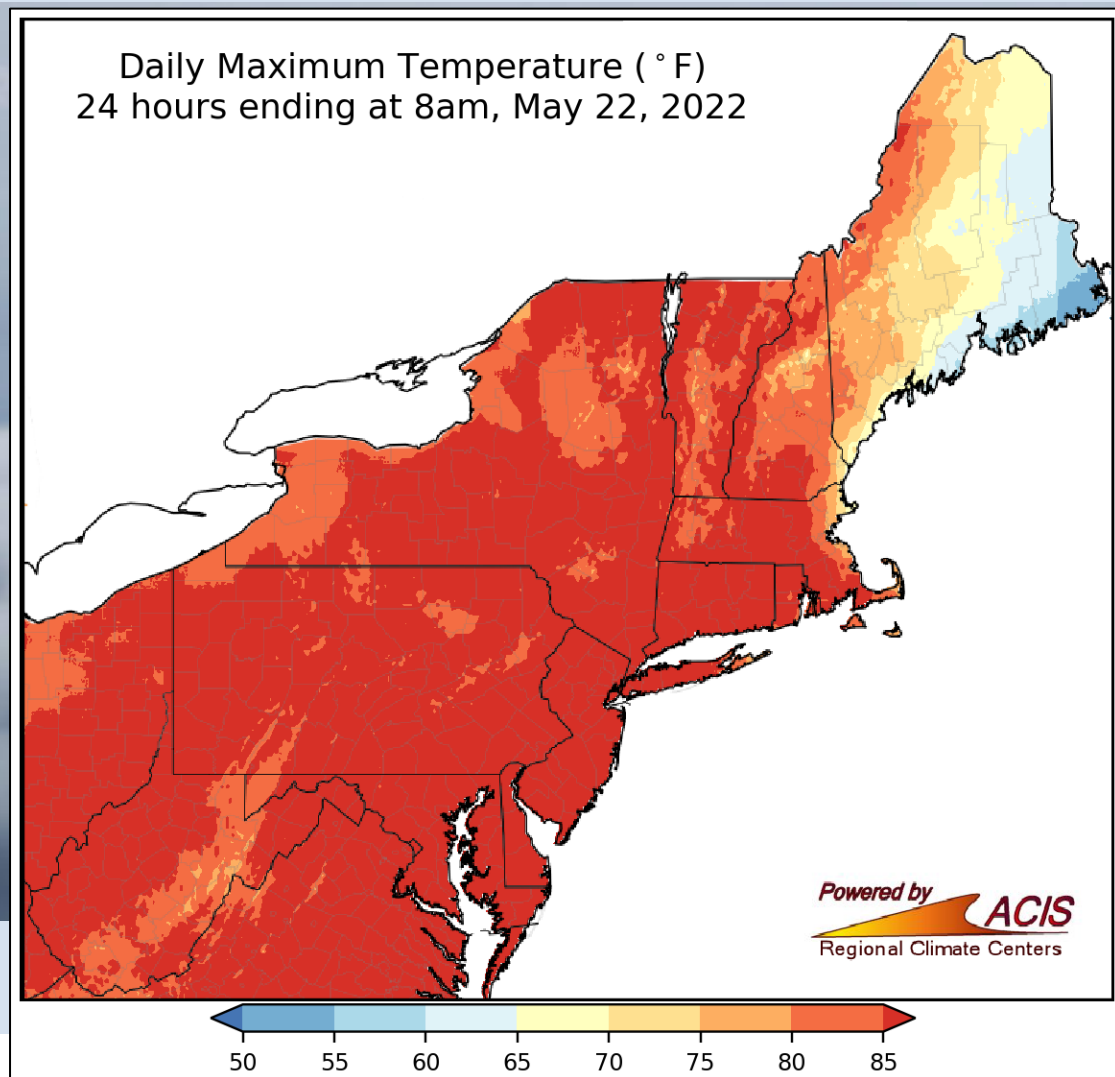


Daily Maximum Temperatures

May 21, 2022

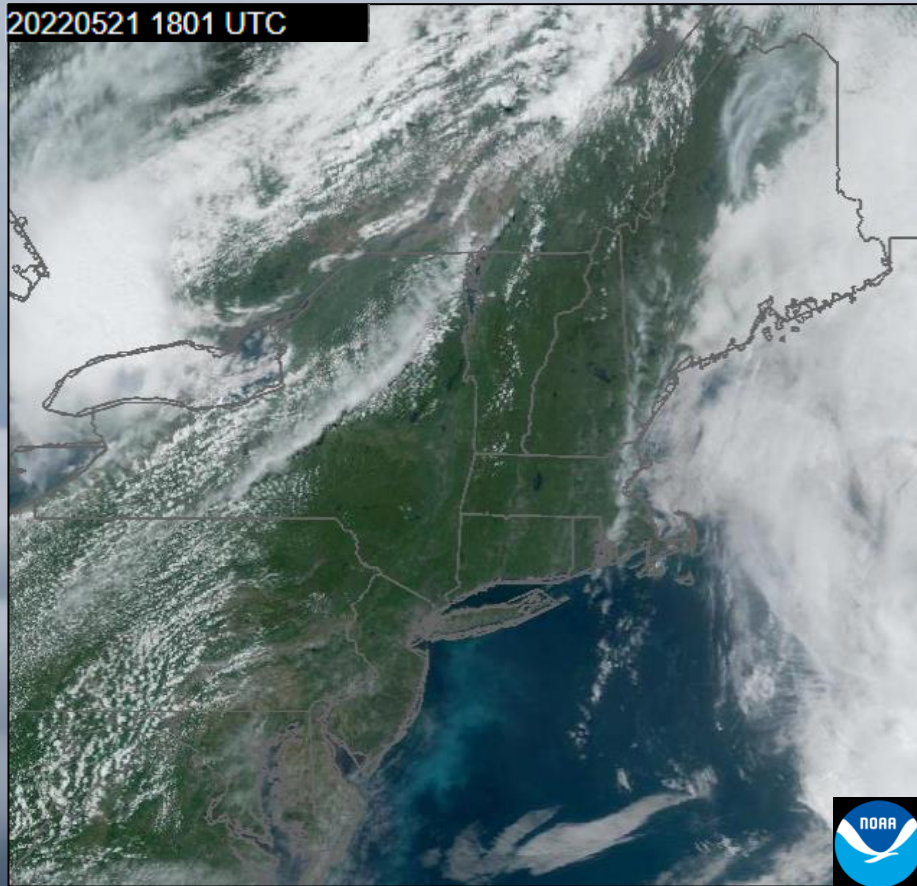
May 22, 2022

Maximum temperatures observed at Bradley International Airport were **90°F** on May 21st and **93°F** on May 22nd.

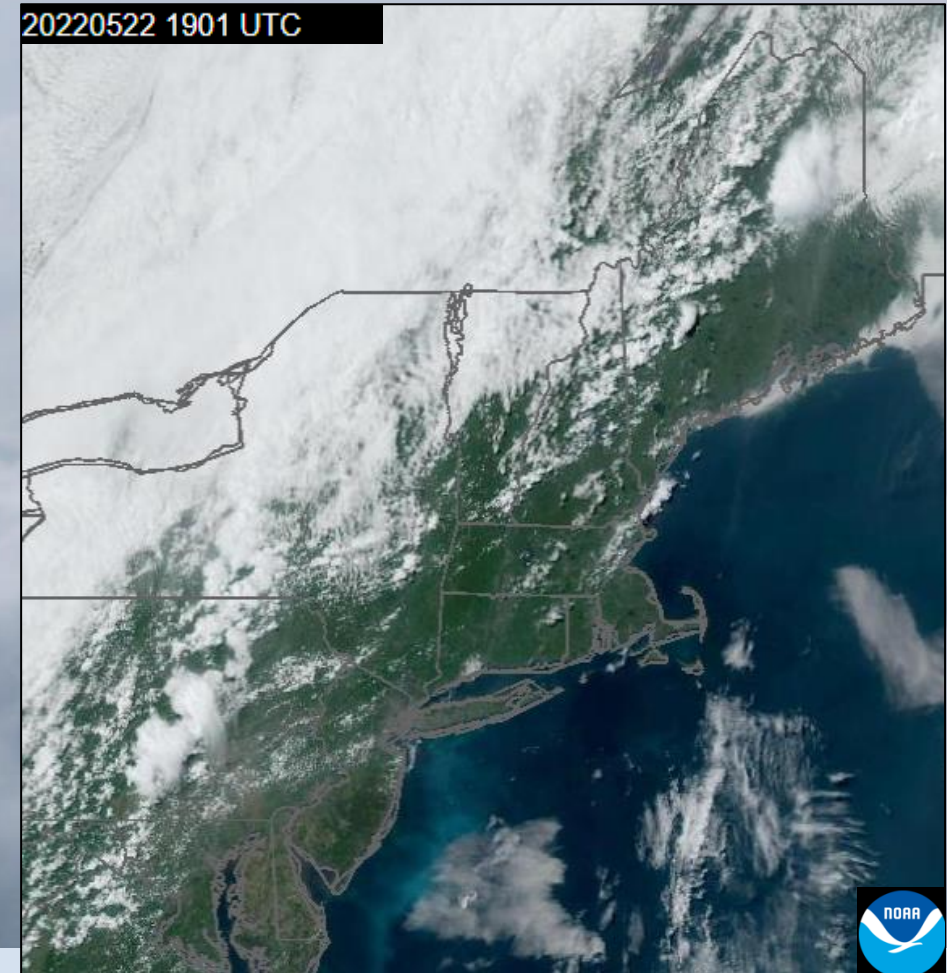


Satellite Imagery

May 21, 2022: 2 PM



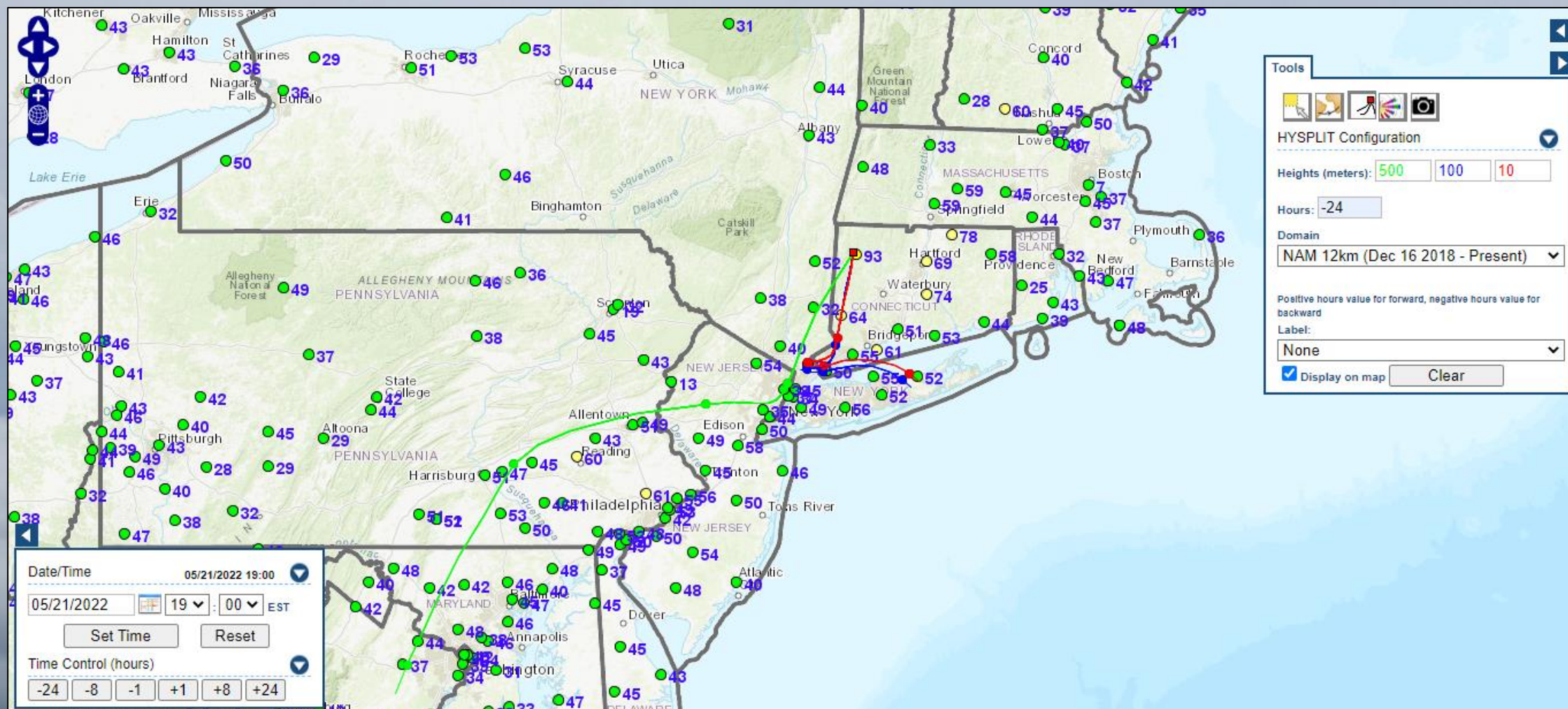
May 22, 2022: 3 PM



Mostly sunny skies
aided in ozone
production on both of
these days.

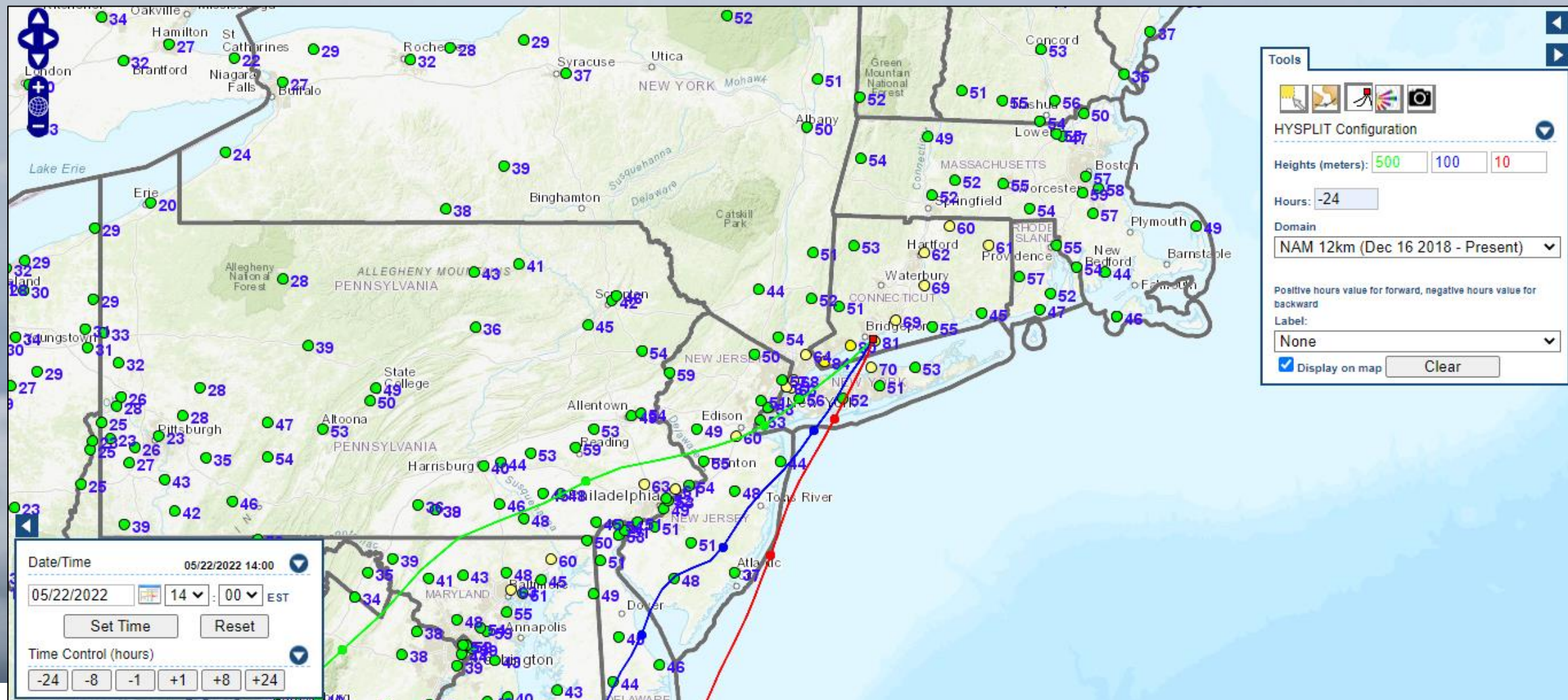


24 Hour Back Trajectories: May 21, 2022 at 19:00 EST



- Lowest level winds (10 – 100 meters) are transporting pollutants over Long Island Sound and New York City before entering Connecticut ; 500 m winds are southwesterly traveling slightly to the west of New York City.

24 Hour Back Trajectories: May 22, 2022 at 14:00 EST



- Lower and upper level winds (10 – 500 meters) are southwesterly transporting pollutants along the I-95 corridor into Connecticut.

Observations

- First two exceedance days for Connecticut.
 - Only **Cornwall** exceeded the 70 ppb standard on May 21, 2022.
 - Only **Westport** exceeded the 70 ppb standard on May 22, 2022.
- Widespread **MODERATES** across most of Southern New England on both days with only one exceedance in the OTC each day.
- Warm temperatures and sunny skies aided in ozone production on both days.
- On both days, southwest winds transported ozone along the I-95 corridor into Connecticut.

