



DEEP'S 20BY26 INITIATIVE PROGRESS AND DAM SAFETY PERMITTING HIGHLIGHTS

Connecticut Department of Energy and Environmental Protection



Connecticut
Department of Energy &
Environmental Protection
INNOVATIVE PARTERSHIPS & PLANNING

Camille Fontanella

Director

*Office of Innovative Partnerships
and Planning*

Contact the Concierge Team: DEEP.Concierge@ct.gov

Visit our website: [Client Concierge Service](#)

DEEP'S 20BY26 INITIATIVE



TRANSPARENCY, PREDICTABILITY,
AND EFFICIENCY

Building upon the foundation of our highly successful 20BY20 initiative, DEEP's new 20BY26 initiative commits to pursuing 20 measurable improvements across the agency that increase the predictability, efficiency, and transparency of DEEP's processes.

DEEP'S 20BY26 INITIATIVE



Timely Permitting Decisions

GOAL 2: Achieve 90% On-Time Completion Rate for Critical Permit Applications

Expanding Access to DEEP's Information

GOAL 9: Enhanced Public Records Transparency

Accelerating Access to DEEP Funding

Goal 11: Speed up Grants and Contracting Process by 50% for Key Grant Programs

Expanding DEEP's Concierge Services

GOAL 12: Expand DEEP Concierge Services to Municipalities and Small Businesses

Speeding Permitting for Decarbonization

GOAL 14: Permitting for Decarbonization

Streamlining Permitting for Dam Repair and Removal

GOAL 18: Enhancing Dam Safety through Improved Permitting for Removal and Repair

ACHIEVE 90% ON-TIME COMPLETION RATE FOR CRITICAL PERMIT APPLICATIONS



WHY

Continued tracking of permit processing time will provide more predictability for applicants and provide insight on staff resources



STRATEGY

Provide additional permit application assistance, continued reporting through [Permitting Timeframes Dashboard](#), identify challenges, develop solutions



METRICS

Achieve 90% on-time completion for applications in the 3-month category (55 permits covered); regain 80% for those in 6- and 12-month categories



PROGRESS

- ✓ By Q2 2025 we are achieving 90% on-time completion for applications in the 3-month bin
- ✓ Reissue 9 General Permits for storm and wastewater discharge in 2025

ENHANCED PUBLIC RECORDS TRANSPARENCY



WHY

To prioritize the IT needs of the agency for records management and increase public records transparency



STRATEGY

Complete document digitization and integrate records management with e-filing and data management functions



ACTIONS

- Digitize large record sets for the [Document Online Search Portal](#)
- Improve direct access to data via [CT Open Data Portal](#) and documents via [Document Online Search Portal](#)
- Create additional [map viewers](#) for data transparency and simplicity
- Simplify access to digital records to reduce Freedom of Information Act (FOIA) requests received through [GovQA](#) for information available electronically



PROGRESS

- ✓ 10 million records in the [Document Online Search Portal](#)
- ✓ Layout, theme, and accessibility overhaul of [GIS Open Data Hub](#) in coordination with OPM's GIS Office

SPEED UP GRANT AND CONTRACTING PROCESSES BY 50% FOR KEY GRANT PROGRAMS



WHY

To execute contracts faster so funds can be expended sooner and improve DEEP's grant application experience for staff, grant applicants, and recipients



STRATEGY

Implement new contracting process with integrated and streamlined workflows, new templates, revised application content, and step-by-step guidance



METRICS

Reduce time to execute by 50% for key grant programs:

- Aquatic Invasive Species
- Recreational Trails
- Clean Vessel Act
- Urban Forestry
- Watersheds (319(b))

20BY26 GOAL 11

SPEED UP GRANT AND CONTRACTING PROCESSES BY 50% FOR KEY GRANT PROGRAMS



PROGRESS

- ✓ [NEW Grants 101 webpage](#) – interactive visual highlights the steps in DEEP's contracting process
- ✓ [NEW DEEP's Grants & Financial Assistance webpage](#) – grants and loans tool with introductory video guide
- ✓ Average Days to Execute: 2021 & 2022 = 335 days; down to 124 days in Q2 2025 – **63% reduction**

Funding Opportunities

Use the boxes below to search for relevant DEEP funding opportunities.

Steps
Choose a step to learn more about DEEP's grant contracting process.

1. Grant application submission and evaluation
2. Awardees notified
3. Documentation requested
4. Grant project scope of work
5. Documentation checklist and review
6. Contract is sent to awardee for signature
7. Contract execution and approval
8. Contract is fully executed and work can begin

Description
Grant application is selected for funding by an evaluation review committee.

Grants

☐ Climate Adaptation/ Mitigation
☐ Community Garden
☐ Energy Efficiency

☐ Municipality
☐ Private Business
☐ Private Education Institution

[CLICK HERE TO CLEAR ALL FILTERS](#)

"OSWA" | OPEN SPACE & WATERSHED LAND ACQUISITION GRANT PROGRAM



- Established by CGS § 7-131d through 7-131k. Secured by State bonding
- Funding to purchase permanent interest in ecologically or recreationally valuable land (fee acquisition or conservation easement)
- All lands or interest in lands acquired under this program must be preserved in perpetuity, predominantly in their natural, scenic, and open condition.
- Open to municipalities, non-profit conservation organizations (land trusts), and water companies

[APPLICATIONS DUE NOVEMBER 3](#)



Platt Farm Preserve, Southbury
OSWA Recipient

Contact Allyson Clark, Allyson.Clark@ct.gov

<https://portal.ct.gov/deep/open-space/open-space-and-watershed-land-acquisition-grant-program>

EXPAND DEEP CONCIERGE SERVICES TO MUNICIPALITIES AND SMALL BUSINESSES



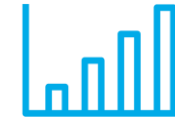
WHY

To support economic development, provide greater understanding of DEEP's processes, and support applicants and programs in achieving successful environmental outcomes



STRATEGY

Expand Client Concierge Services to municipalities and small businesses



METRICS

- Launch a new strategic initiative to serve as a “front door” for municipalities seeking permitting, grants, and other DEEP services
- Enhance assistance to small businesses



PROGRESS

- ✓ Concierge's 5th Birthday ([more about Concierge](#))
- ✓ [DEEP's Municipal Team](#)
- ✓ [DEEP's Municipal Hub webpage](#)
- ✓ Municipal Connections Newsletters about [wildfires](#), [dam safety](#), and [salt impacts to the environment](#) ([sign up](#))
- ✓ Monthly municipal email blasts with funding opportunities and other notices ([sign up](#))

PERMITTING FOR DECARBONIZATION



WHY

Achieving a net-zero grid by 2040 requires deployment of new resources – making better information available and providing better predictability helps suitable projects succeed



STRATEGY

Develop a broader programmatic approach for siting projects – building on progress already made by STEPs and Commission on Environmental Standards – while protecting our natural resources and environment



ACTIONS

- Following through on best permitting practices for renewable energy – solar, wind, battery storage
- Creating a clean energy suitability siting map and tool

PERMITTING FOR DECARBONIZATION

COMMUNITY RENEWABLE ENERGY SITING TOOL (CREST)



PROGRESS

- ✓ May 2025 launch of the [CREST website and mapping application](#) (Read the [press release](#) here.)
- ✓ [Data layers](#)
- ✓ Public engagement throughout 2024 – 25 with CREST Collaborative
- ✓ [Demonstration webinar on June 18, 2025](#) with UConn CLEAR

CREST Principles



Further Connecticut's clean energy goals – full decarbonization by 2040.



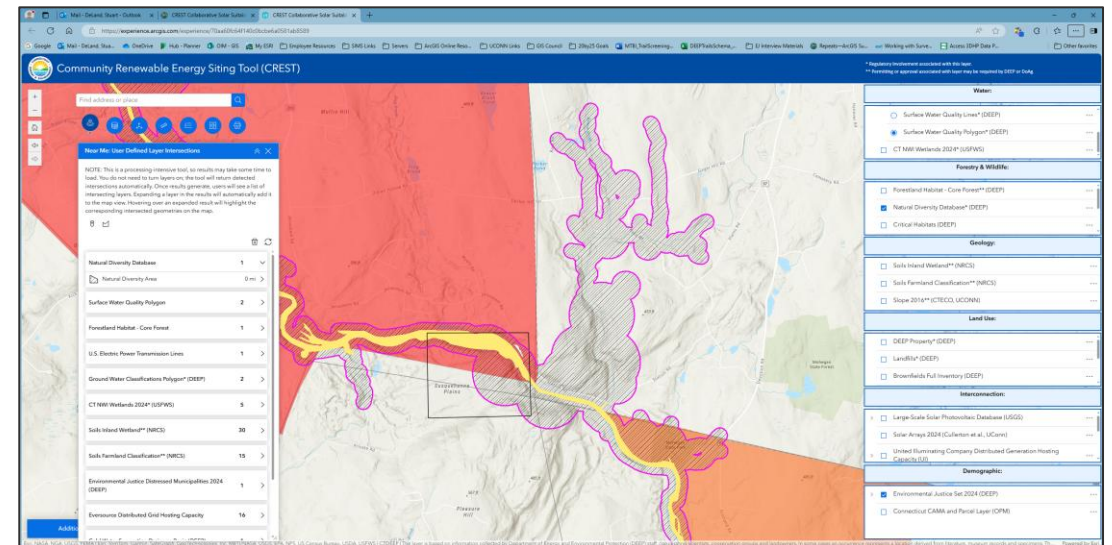
Enable a more transparent and efficient siting and permitting process.



Conserve Connecticut's environmental resources equitably in all communities.



Provide a tool with publicly available data that leads to **the 3 goals** above.



ENHANCING DAM SAFETY THROUGH IMPROVED PERMITTING FOR REPAIR AND REMOVAL



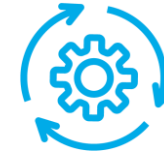
WHY

Importance of dam safety to public safety, property, and environmental and ecological health



GOALS

Maintain public safety and provide environmental benefit for private and state-owned dams; improve climate resiliency, ecological and human health, and water quality; reduce permitting timelines by expanding streamlined permitting; and increase the protection of drinking water supplies;



ACTIONS

- Initiate a joint dam safety advisory group with interested stakeholders
- Expand general permit eligibility for broader range of dam related work
- Continued focus on state owned dams (under DEEP's oversight) to comply with applicable requirements
- Develop sediment management guidelines (focus on lightly polluted sediment to align with updates to RSRs)

ENHANCING DAM SAFETY THROUGH IMPROVED PERMITTING FOR REPAIR AND REMOVAL



PROGRESS

- ✓ Launched Dam Safety Advisory Group in November 2024
- ✓ Held internal Kaizen event in November 2024 to streamline our workflows
- ✓ Stepped up compliance assistance and enforcement actions
- ✓ Created **Dam Safety Infographic**
- ✓ Drafted modernized and expanded coverage for GPs 14, 15, and 16 to facilitate repair and removal – 30- day **Public notice for all GPs** on April 16, 2025

Dam Safety Program

"Dam" means any barrier of any kind whatsoever which is capable of impounding or controlling the flow of water, including but not limited to storm water retention or detention dams, flood control structures, dikes and incompletely breached dams.

Get to know a dam

Did you know? That each registered dam has:

- A Dam ID number
- Name
- Hazard classification
- Condition

Conditions of Dams

1. Good
2. Satisfactory
3. Fair
4. Poor
5. Unsatisfactory

Dams can vary in sizes!

Want to know if you have a Dam near you?
Check out the GIS mapper! Located on the Dam Safety website

Dam Hazard Classifications

AA	A	BB	B	C
Negligible Hazard	Low Hazard	Moderate Hazard	Significant Hazard	High Hazard

Uses of Dams

- ✓ Irrigation
- ✓ Flood Storage
- ✓ Hydropower
- ✓ Water supply
- ✓ Livestock Water Supply
- ✓ Recreational Use

A dam owner is responsible for:

- ✓ Registering their dam with the Dam Safety Program
- ✓ Recording B and C hazard class dams on municipal land records
- ✓ Maintaining their dam in safe condition
- ✓ Making repairs to their dam with appropriate permits
- ✓ Conducting regulatory inspections with a professional engineer
- ✓ Having an Emergency Action Plan for B and C hazard class dams
- ✓ Notifying the Dam Safety Program about ownership changes for the dam

Visit the Dam Safety Program website at <https://portal.ct.gov/deep/water/dams/dams-safety>

The Dam Safety Program at the CT Department of Energy and Environmental Protection regulates all state, privately, and municipally owned dams in the state! Questions are always welcome!

The Dam Safety Program can be reached at DEEP.Damsafety@ct.gov or via phone at 860-424-3706

SCAN ME



DAM SAFETY PERMITTING

Dan Lesniewski
Civil Engineer 2

Daniel.Lesniewski@ct.gov

DAM SAFETY REGULATORY PROGRAM

“All dams, dikes, reservoirs and other similar structures, with their appurtenances,..., which, by breaking away or otherwise, might endanger life or property, shall be subject to the jurisdiction conferred by this chapter.”

Chapter 446j Connecticut General Statutes - Sec 22a-401

There are roughly 4,800 dams in DEEPs Dam database and roughly 4,500 of these dams are regulated by DEEP



DAM SAFETY PERMITTING ADVISORY GROUP MEMBERS

- Lawrence Marcik – South Central CT Regional Water Authority
 - Karl Acimovic – Professional Engineer
 - Nick Casparino – Civil Engineer, City of Hartford
 - Scott Bristol – SLR Consulting
 - Brian Wood – Land Management Department, First Light
 - Andrew Cosentino – MDC
 - Jonathan Andrews – GZA GeoEnvironmental
 - Daniel Ramsey – GZA GeoEnvironmental
 - Laura Wildman – Save the Sound
 - Paul Woodworth – Save the Sound
 - Bill Andres – Tata & Howard
 - Peter Aarrestad – DEEP Fisheries
 - Bruce Williams – DEEP Fisheries
 - Dan Lesniewski – DEEP Dam Safety
 - Emma Cimino – Deputy Commissioner Environmental Quality
 - Chuck Lee – Assistant Director DEEP Dam Safety/State Dams
 - Anna Laskin – DEEP Dam Safety Supervisor
 - Ramona Goode – DEEP State Dams Supervisor
 - Ray Frigon – Director, Remediation Division
 - Carolyn Fusaro – DEEP Remediation
 - Peter Zaidel – DEEP Remediation
 - Graham Stevens – Bureau Chief, DEEP WPMD
 - Nisha Patel – Director, DEEP WPMD
 - Camille Fontanella – Director, DEEP Office of Innovative Partnerships and Planning
 - Bea Milne – DEEP Office of Innovative Partnerships and Planning
 - Emily Tully – DEEP Office of Innovative Partnerships and Planning
 - Darren Wright – DEEP Office of Innovative Partnerships and Planning
 - Rosalynn Grzywinski – Administrative Assistant, Commissioners Office
-

TYPES OF DAM SAFETY GENERAL PERMITS

GP-14: **Non-Filing**

- Limited Maintenance and repair activities
- No DEEP Filing is required
- No P.E. oversight is required

GP-15: Filing with **Confirmation of Eligibility**

- Authorizes two levels of repairs and alterations
- No P.E. oversight required for work on dams <15 ft high & storing <50 acre-ft of water
- Expanded work on any sized dam & removal of dam remnants with P.E. oversight

GP-16: **Approval of Filing**

- Authorizes repair & alteration to all dams
- P.E. oversight is required
- If quantities of work exceed the limits of the GP-16 or are not considered minor an individual permit is required

UPDATES TO THE GP 14

ACTIVITY IN NEW GENERAL PERMIT	STATUS VS. OLD GENERAL PERMIT
Minor repair or replacement of trash racks in kind within inlet or outlet or drop inlet structures;	NEW
Removing debris, wreckage, or other similar materials blocking spillways, intake areas, and channels at dams by mechanical means;	NO CHANGE
Removal of recently accumulated sediment from areas ancillary and adjacent to dams including spillways, intake areas, channels, and areas designed to capture sediment;	Old had limit of 50 cubic yards annually, New has 10 cubic yards annually
Replacing weir boards;	NO CHANGE
Installing security and safety fencing;	NO CHANGE
Replacing elastomeric sealant in concrete construction joints;	NO CHANGE
Placing topsoil and establishing grass cover on existing riprapped embankments;	NO CHANGE
Maintenance of existing toe drain systems and repairing or installing seepage measurement or soil movement monitoring devices;	NO CHANGE
Exercising and maintenance of gates and valves;	NO CHANGE
Replacing up to 1,000 square feet of missing and storm scoured riprap;	Old had limit of replacing up to 10 square yards
Cutting and removing woody vegetation (no removal the root systems of trees larger than 3 inches diameter at breast height);	NO CHANGE
Restoration of grass cover;	NO CHANGE
Eradication of woody and invasive vegetation on dams by the use of herbicides;	NEW
Filling up to 10 animal burrows in downstream slopes only;	NO CHANGE
Quantity limited concrete and masonry repairs allowed each year.	NO CHANGE

UPDATES TO THE GP 15 – NO P.E. OVERSIGHT REQUIRED

ACTIVITY IN NEW GENERAL PERMIT	STATUS VS. OLD GENERAL PERMIT
Repairs to dams 15 feet or less in height and 50 ac-ft. or less of water storage: Without Professional Engineering oversight – Use form DEEP-DAMSAFETY-GP-015-3(a)1	
All activities authorized under the General Permit-014;	NEW
Replacing missing and storm scoured riprap (only in areas where riprap already exists and includes moving displaced riprap back to its original location);	Used to have limit of up to 25 sq. yds., now no limit
Restoring eroded areas;	Removed "minor" from old activity title (Restoring minor eroded areas), activity is the same
Filling animal burrows on upstream or downstream slopes and restoration of the embankment where the burrows full extent can be determined without excavation;	REMOVED FROM THIS SECTION
Patching of spalling and sealing of concrete surfaces done by hand (maximum of 500 square feet of repairs not requiring reinforcing steel and maximum repair depth of one (1) inch.);	NO CHANGE
Repair of up to 200 linear feet of cracks in concrete;	NO CHANGE
Repair of up to one cubic yard of concrete in total for the dam;	NO CHANGE
Repointing voids and repairing masonry.	NO CHANGE

UPDATES TO THE GP 15 – P.E. OVERSIGHT REQUIRED

ACTIVITY IN NEW GENERAL PERMIT	STATUS VS. OLD GENERAL PERMIT
With Professional Engineering oversight – Use form DEEP-DAMSAFETY-GP-015-3(a)2	
Projects receiving authorization under Section 14 of the Rivers and Harbors Act of 1899, 33 U.S.C. § 408 (Section 408) from the US Army Corps of Engineers;	NEW
Emergency drawdown of the impoundment;	NEW
Drawdowns for inspection or investigation work on dams;	NEW
Removal of recently accumulated sediment from areas ancillary and adjacent to dams including spillways, intake areas, channels, and areas designed to capture sediment;	NEW
Installation or replacement of up to 200 linear feet of engineered toe drain systems;	NO CHANGE
Minor repair or modification of trash racks, gates and valves within inlet or outlet or drop inlet structures that can be completed without excavation into the dam;	NO CHANGE
Placing up to 25 cubic yards of riprap;	Was "placing up to 75 square yards"
Removing up to 5 tree root systems less than 3 inches diameter at breast height annually;	Was "where the tree density is less than one three-inch (3") tree per 100 square feet"
Filling animal burrows on upstream or downstream slopes and restoration of the embankment where the burrows full extent can be determined without excavation;	Used to have limit of 20 burrows, now no limit
Patching of spalling and sealing of concrete surfaces (up to 1,000 square feet);	NO CHANGE
Repair of up to 500 feet of cracks in concrete;	NO CHANGE
Limited amounts of repair of concrete structures on dams, spillways, and appurtenances requiring formwork and reinforcing steel;	NO CHANGE
Repointing voids and repairing masonry;	NO CHANGE
Sliplining and grouting up to 100 linear feet of up to 36-inch diameter existing outlet pipes where the existing pipe is not significantly deformed;	NO CHANGE
Grouting voids by means of gravity fed cement or pressure injection chemical grouting process;	NO CHANGE
Installation of footbridges or vehicular bridges over spillways not requiring center support piers;	NO CHANGE
Digging test pits, drilling soil borings, or installing piezometers while investigating dams;	NO CHANGE
Removal of dam remnants or stabilization of naturally breached dams;	Conditions for proposed removal of remnant dams has been updated

UPDATES TO THE GP 16

ACTIVITY IN NEW GENERAL PERMIT	STATUS VS. OLD GENERAL PERMIT
All activities authorized under the General Permit-014 and General Permit-015;	NEW
Installation of greater than 200' of engineered toe drain systems;	Was "up to 400 ft", now no limit after 200 ft
Repair, removal, or replacement of trash racks, gate valves, and sluice Gates;	NO CHANGE
Placing new or replacing greater than 25 cubic yards of riprap;	Was "up to 150 square yards", now no limit after 25 cubic yards
Removing tree root systems and restoration of earth dam crests, slopes, and abutments;	Removed "where the tree density is less than one three-inch (3") tree per 100 square feet", now no limit
Filling animal burrows on upstream or downstream slopes and restoration of the embankment	Removed from GP-16, covered under GP-15 now
Repairs to and construction of concrete structures on dams (limited concrete volume by formula);	NO CHANGE
Repointing masonry;	NO CHANGE
Sliplining and grouting existing outlet pipes (no size limit);	NO CHANGE
Grouting voids by means of gravity fed cement or pressure injection chemical grouting process;	Removed from GP-16, covered under GP-15 now
Installing bridges over spillways which may require center support;	NO CHANGE
Installation of utility poles on the dam embankment;	NEW
Removal of low or moderate hazard class dams meeting certain criteria;	Criteria has been updated
Stabilization of Naturally Breached Dams	Removed from GP-16, covered under GP-15 now
Removal of weir board or creation of a notch in a spillway to incrementally lower an impoundment;	NO CHANGE
Installation of fishways at spillways that does not reduce the capacity of the primary or auxiliary spillways and does not require excavation at the abutments of the dam;	NO CHANGE
Installation and maintenance of triploid grass carp screens meeting certain criteria;	NEW
Improvements to spillway discharge channels to allow for fish migration.	NO CHANGE

UPDATES TO ALL GPS & SUMMARY OF UPDATES

- Fees are no longer required for any of the GPS
- When submitting the Notice to Municipality, send to Town Clerk's office instead of the local Inland Wetlands Agency
- New activities added to all 3 GPS
- Limits have been updated to allow for more to be done under the GPS
- GP-15 has been updated from "Filing Only" to "Filing with Confirmation of Eligibility"
- General language added to all 3 GPS to account for the upcoming ACOE Nationwide Permits



RESOURCES AVAILABLE TO DAM OWNERS AND THE PUBLIC

- ❑ Our webpage [Dams Safety \(ct.gov\)](https://damssafety.ct.gov)
- ❑ GIS tool to identify dams across CT: [Dams Public Viewer Application \(arcgis.com\)](https://arcgis.com)
- ❑ Email: DEEP.Damsafety@ct.gov
- ❑ Our phone number: **860-424-3706**
- ❑ Link to our Dam Registration and Recordation Page: [Dam Registration and Dam Recordation \(ct.gov\)](https://damregistration.ct.gov)
- ❑ Link to our EAP page: [Emergency Action Plans](https://damssafety.ct.gov/emergency-action-plans)
- ❑ Inspection report guidelines and hiring an engineer: [Dam Inspections](https://damssafety.ct.gov/dam-inspections)
- ❑ Dam permitting page: [Dam Permitting \(ct.gov\)](https://damssafety.ct.gov/dam-permitting)
- ❑ Pre-Application Questionnaire: [Pre-Application Assistance \(ct.gov\)](https://damssafety.ct.gov/pre-application-assistance)
- ❑ Contacting the Central Permit Processing Unit: [Permit Application Submittal \(ct.gov\)](https://damssafety.ct.gov/permit-application-submittal)
- ❑ List of Professional Engineers:
https://biznet.ct.gov/SCP_Documents/Results/21623/Contract%20Award%20Document19PSX0164.pdf
- ❑ Save the Sound Contact: lwildman@savethesound.org
- ❑ Fisheries Contract: deep.inland.fisheries@ct.gov
- ❑ Beaver problems can be reported here: <https://portal.ct.gov/DEEP/Wildlife/Nuisance-Wildlife/Problems-with-Beavers>

Questions?

Client Concierge Service



Connecticut
Department of Energy &
Environmental Protection
INNOVATIVE PARTERSHIPS & PLANNING

Contact us! DEEP.Concierge@ct.gov

<https://portal.ct.gov/DEEP/Permits-and-Licenses/Client-Concierge-Permit-Assistance>

Dam Safety Program

Dam Safety Phone Number: **860-424-3706**

Email: DEEP.Damsafety@ct.gov

<https://portal.ct.gov/deep/water/dams/dams-safety>