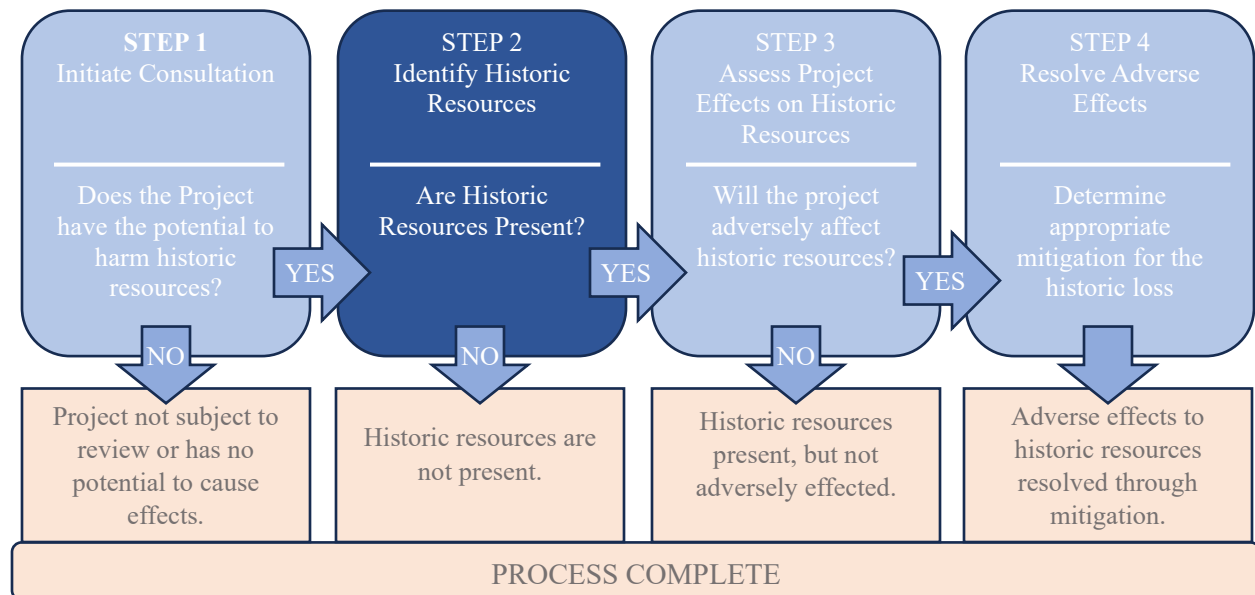


State Historic Preservation Office (SHPO) Environmental Review Process

Step 2: Identify Historic Resources

The second step of SHPO's Environmental Review process is to Identify Historic Resources. Sometimes this step is completed and included with information provided in Step 1.



WHAT are Historic Resources

Not every old place is given equal consideration. SHPO's review process is concerned with places that retain significance. Historic Resources also may be referred to as cultural resources or historic assets. Although these terms are interchangeable, SHPO uses two relevant legal definitions to identify those significant historic resources that deserve consideration under the law. Section 106 defines a "historic property" as any district, building, structure, site, or object that has been listed or is considered eligible for listing on the National Register of Historic Places. These historic properties retain integrity and convey significance of association, type, or research potential. These concepts are specifically defined by the National Park Service and additional information can be found here:

www.nps.gov/subjects/nationalregister. Projects subject to environmental review under federal regulations use this definition to evaluate the project effects.

Connecticut has a State Register of Historic Places that mirrors the federal program, but state regulatory statutes refer to "historic structures and landmarks." These are defined as any building, structure, object or site that is significant in American history, architecture, archaeology and culture or property used in connection therewith including sacred sites and archaeological sites (§10-410 and §10-381). Projects subject to environmental review under state regulations use this definition to evaluate the project effects.

WHERE to find information

To assist with identifying known historic resources, SHPO offers the Connecticut Cultural Resources Information System or ConnCRIS, an online tool for information on historic resources mapped across the state (<https://conncris.ct.gov/>). Some information, such as archaeological sites, are restricted because sharing their locational information could put them at risk of harm. SHPO staff can assist with identifying reported resources in the project area. However, reported information is a result of prior surveys and not all locations have been surveyed. Appropriate identification efforts may require a survey of the proposed project area by a historic preservation professional to ensure due diligence.