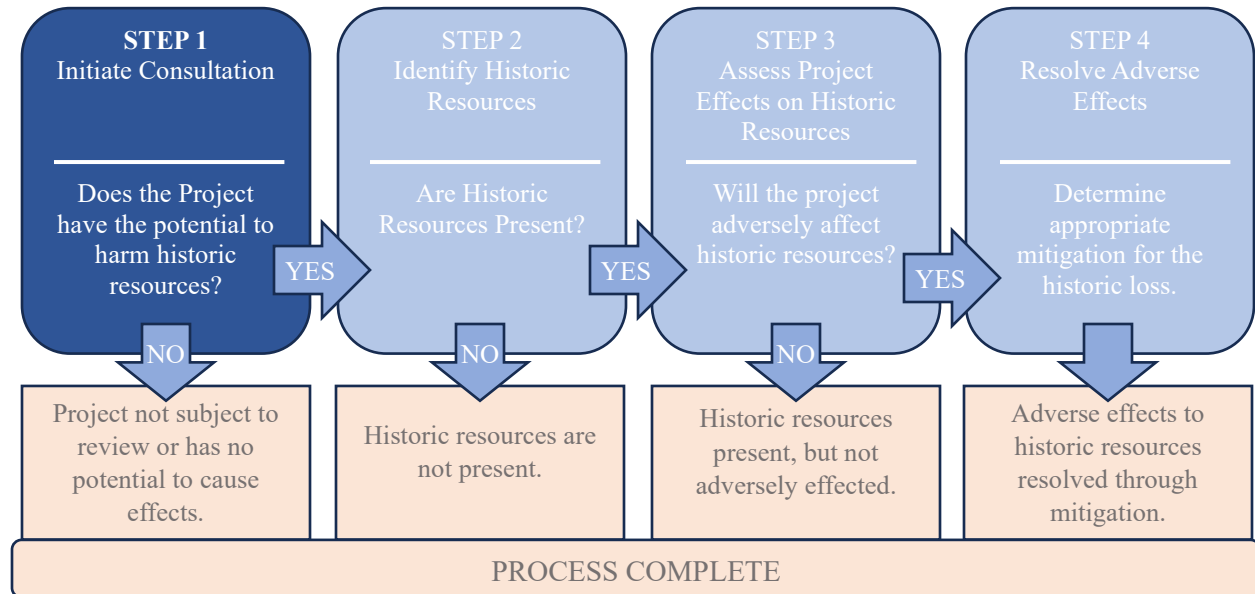


State Historic Preservation Office (SHPO) Environmental Review Process

Step 1: Initiate Consultation

The first step of SHPO's Environmental Review process is to Initiate Consultation. This step generally is triggered when there is a State or Federal action, as defined by the governing legislation (see the Introduction and Overview for additional information).



What information is requested to start the process

To submit a project to SHPO for Environmental Review, please follow the link at https://portal.ct.gov/decd/content/historic-preservation/01_programs_services/environmental-review/environmental-review-procedures to enter the online submission portal.

Please be prepared to upload relevant information including, but not limited to:

- Street address or location identifying information,
- Maps indicating the project's location and area(s) of potential effect,
- Names of all government agencies involved (permits, funding or licensing),
- Detailed description of the project activities,
- A statement of the project's purpose and need,
- Design plans for proposed rehabilitation or construction projects, and
- Name and email address of the point of contact for SHPO consultation.

SHPO's ability to complete a timely project review largely depends on the quality of the materials submitted.

HOW this information is used

Historic resources are part of Connecticut's identity. SHPO's legal responsibility is to balance preservation of this authentic and tangible part of history with the project needs. Critical to evaluating this balance is understanding both the benefits and potential impacts of the project. In this regard, SHPO requests for information are intended to document not only our decision making, but also the due diligence efforts of the applicant to safeguard against legal challenges.