

The State Historic Preservation Office (SHPO) and Museum Division is responsible for overseeing the governmental program of historic preservation for Connecticut's citizens. In partnership with the National Park Service, state and local preservation organizations, SHPO administers a range of federal and state programs that identify, register and protect the buildings, sites, structures, districts and objects that comprise Connecticut's cultural heritage and built environment.



Connecticut SHPO 2016 Year in Review

As staff at the SHPO and Museum Division look forward to the New Year, we are also taking the time to reflect on the year passed. 2016 was an exciting and busy year at the SHPO. Not only was it our 60th anniversary, but it was also the 50th anniversary of the National Historic Preservation Act. So, there was a lot to celebrate! Below are a few of the highlights from last year.

PROMOTING COASTAL RESILIENCY

Last summer the SHPO sponsored a series of charrettes on resiliency planning with several regional councils of governments, or COGs, as part of SHPO's Hurricane Sandy disaster relief program, funded by the National Park Service. The sessions considered ways to recognize historic and cultural resources in local and regional plans, as well as ways to plan



Photo: Ocean Beach Park, New London. Coastal resources are essential to Connecticut's sense of place but are increasingly vulnerable

for the protection of those resources. in an era of climate change.
Now one COG, the Southeastern Connecticut Council of Governments, is putting those ideas in to practice as it updates its hazard mitigation plan.

[More Here](#)

NEWS from the MUSEUMS



OLD NEWGATE PRISON & COPPER MINE

Closed since 2009 because of needed repairs, Old Newgate Prison was open for a one day event on October 22nd. It was a cold and rainy day, but it is estimated that more than 3000 people came out to experience the property. The feedback from those in attendance was very positive and continues to be received. The day could not have happened without a successful partnership between the State Historic Preservation Office, community leaders, the East Granby Historical Society, the Friends of Old Newgate Prison, and a large group of adult and student volunteers.

[Read more](#)

HENRY WHITFIELD STATE MUSEUM

In 2016, the museum hosted visitors from 39 states, Washington, DC, and 20 foreign countries. Four exhibits and seven programs were presented to the public. Collaborations with multiple partners continued and the museum's Facebook page grew with over 500 likes. Long range planning was begun, as was work with an architect on long overdue infrastructure renovations. [Follow on Facebook](#)

PRUDENCE CRANDALL MUSEUM

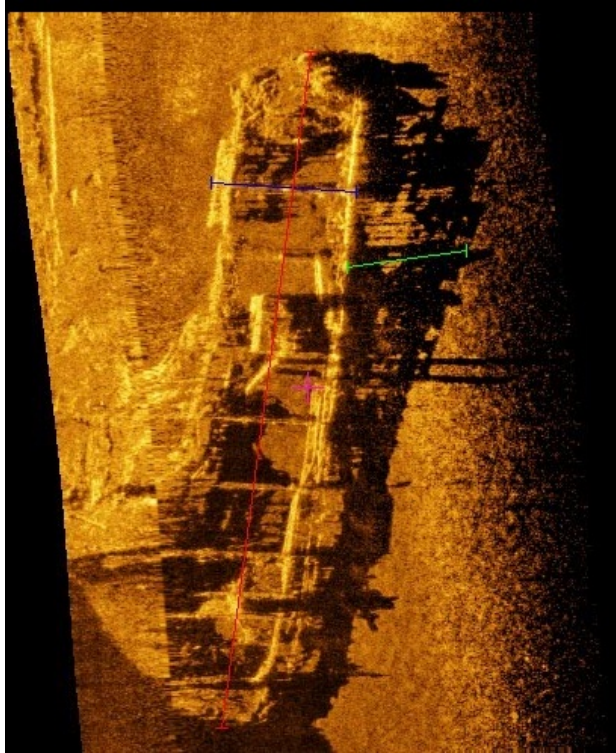
This past year saw the museum receive its most recent award of recognition. Readers of the *Norwich Magazine* proclaimed the Museum the "Best Museum in Northeastern Connecticut." Kaz Kozlowski, Museum Curator, accepted the award on behalf of the museum at an awards dinner in August. [Follow on Facebook](#)

ERIC SLOANE MUSEUM & KENT IRON FURNACE

The theme for the 2016 season was *Eric Sloane and the New England Apple Tree*. Spring began with the planting of a small heirloom variety apple orchard.

From learning about the types of apples, to planting and care of the orchard, programming (which included an apple art show in July and an apple tasting event in October) centered on this theme. In Eric Sloane's book *A Reverence for Wood*, Sloane describes a Westfield-Seek-No-Further apple tree found growing in Connecticut. This was one of the eight varieties planted in the orchard. Finding ways to connect with Eric Sloane and the various topics he covered in his books and art helps to give a fitting tribute to his life and works.

[Follow on Facebook](#)



ARCHAEOLOGY - An Exciting "First" for the SHPO!

With assistance from the National Park Service's Hurricane Sandy disaster relief program, the SHPO engaged Goodwin & Associates to survey the State's underwater archaeological resources. This is the first systematic survey of underwater resources undertaken by a SHPO in the northeast and we are already learning more than we ever thought possible from the results. Using a variety of sensor equipment, nautical archaeologists were able to discover several shipwrecks in the areas of Stamford and Bridgeport Harbor among other locations along the CT shoreline and rivers.

The photo depicts the remains of a wood and steel canal boat.

2016 GRANTS & TAX CREDITS



Last year, the SHPO awarded over \$1,550,000.00 in grants to non-profit organizations and municipalities around the State. Among the many grant recipients were **CT Main Street**



In 2016, the SHPO issued over \$18,340,000.00 in tax credit vouchers for completed rehabilitations in Waterbury, Hartford, Middletown, and Southington to name a few.

Center, New Haven Preservation Trust, CT Audubon Society, and the Town of Windsor Locks.

Additionally, over \$49,100,000.00 in tax credits were reserved for on-going rehabilitation projects throughout the state.

CHECK IT OUT!

In 2016, the SHPO finalized its first searchable database of historic resources in the lower four counties (Fairfield, New Haven, Middlesex and New London). The database, which is available online, includes all properties listed on the State and National Registers, as well as, those resources listed in Local Historic Districts. Coming soon will be a digitized database of all the nominations and surveys of the areas. To use the database, click the link below and scroll to the bottom of the page. [Database](#)

SAVE THE DATE - MAY 18, 2017 **SHPO Statewide Conference**

The SHPO is hosting a statewide conference in May with the theme ***Preservation in a Changing Environment***. The event will be held at the UCONN Campus in Storrs. Stay tuned for more information.

Join us on Social Media in 2017!



**Connecticut State Historic
Preservation Office**



@SHPOConnecticut



@CTSHPO



@CTSHPO

**All the best for a fantastic 2017 from the SHPO &
Museum Division:**

SHPO Team:

Kristina Newman-Scott, State Historic Preservation Officer
Julie Carmelich, Historic Tax Credit Administrator and Restriction Coordinator
Mary Dunne, Deputy SHPO and Grants Coordinator
Catherine Labadia, Deputy SHPO and Staff Archaeologist

Todd Levine, Environmental Review and Freedom Trail Coordinator
Douglas Royalty, Hurricane Sandy Grant Administrator
Jenny Scofield, State and National Register Coordinator

Museum Division:

Chris Collins, Museum Guide

Kaz Kozlowski, Museum Curator - The Prudence Crandall Museum, Canterbury

Michael McBride, Museum Curator - Henry Whitfield Museum, Guilford

Michelle Parrish, Museum Curator

Barbara Russ, Museum Assistant - Eric Sloane Museum & Kent Iron

Furnace, Kent