



CONNECTICUT

Developmental Services

Understanding the National Core Indicators (NCI)



Did you know?

UCONN

CENTER ON AGING

has been completing National Core Indicator surveys for DDS since 2023!



Sample of Individuals



UCONN completes NCI surveys



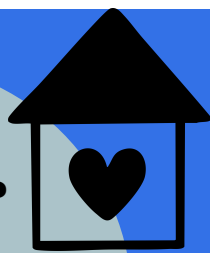
Data is used to help improve services!

The National Core Indicators are an in-person survey completed in sections. The Background Information is completed by the Case Manager and focuses on measurable data points. Section 1 can only be completed by an individual. This section focuses on opinions. Section 2 can be completed by the individual or someone who knows their daily life. This section focuses on measurable data points.

DDS randomly selects individuals who are eligible to participate. Individuals can opt out of participating in the survey. Data presented below is from the FY24-25 survey cycle. UCONN Center on Aging completes the in-person surveys. The data is used by CT DDS to improve supports and services.

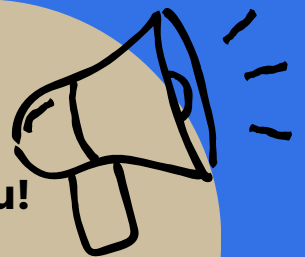
For more information on DDS CT NCI data please visit: [In-Person Survey \(IPS\) 2023-24 Connecticut Report](#). For questions, please contact Health Management Administrator Krista Ostaszewski at Krista.Ostaszewski@ct.gov.

Do you like where you live?



94% of people like where they live! DDS continues to work toward improving residential options to meet peoples needs.

Let us hear from you!



97% of people participated in their Individual planning meeting!

Are we getting it right?



95% of individuals say their case manager knows what is important to them!

Social support is important!



84% of individuals have friends other than staff and family!

