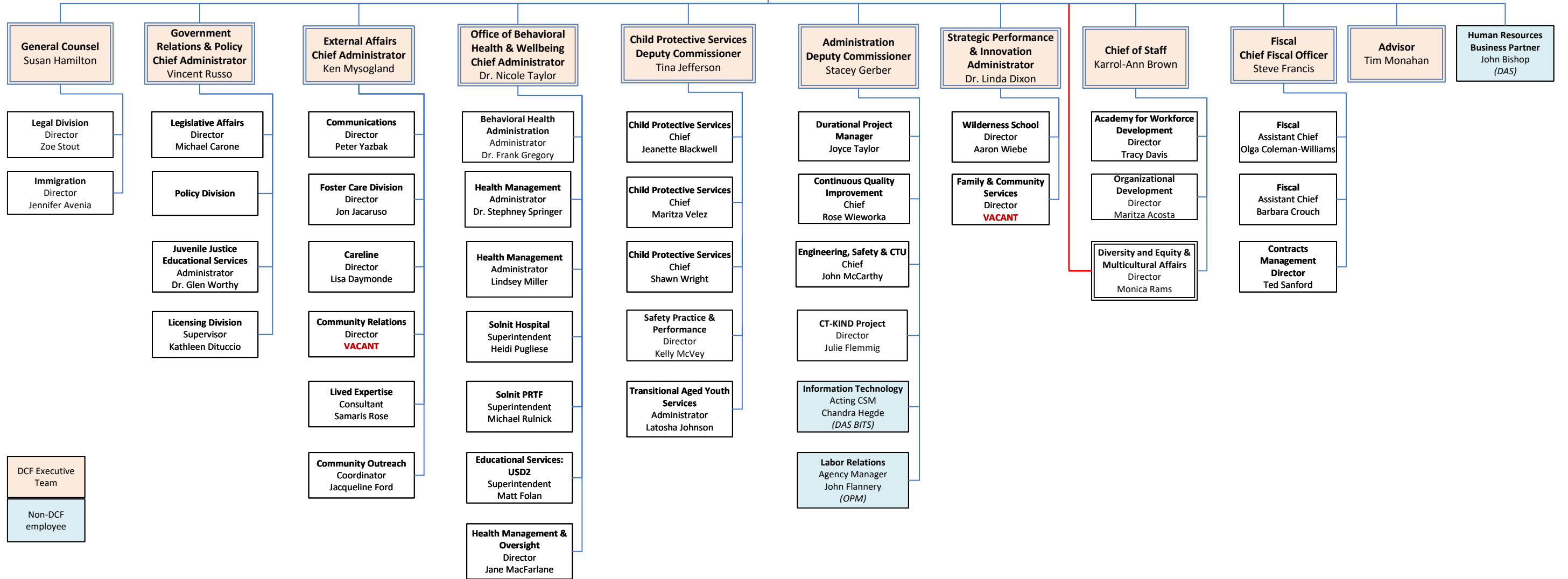


Department of Children and Families
Organizational Chart
August 29, 2025

**Department of Children and Families
Commissioner
Jodi Hill-Lilly**

Executive Secretary
Aletha Minnis
Noemi Hammonds





CONNECTICUT

Children & Families



SAC Presentation Data on Permanency and Safety, October 2025

Deputy Commissioner,
Stacey Gerber

Chief of Continuous Quality
Improvement,
Rosemary Wieworka, LMSW

Data Scientist
Kathleen McKay, PhD

Safety outcome:

Keep children and youth safe, with focus on the most vulnerable populations.

**Policy change in 10/24 increased FAR rules outs to include when there are children in the home 0-5 to increase safety lens on this population.

Safety

Indicators	FY24 Annual	FY25 Annual	FY26 Target
Maltreatment in foster care (rate per 100,000 foster care days) [Federal measure]	6.8	5.5	CFSP: ≤ 9.07
Maltreatment in foster care, ages 0-5	3.6	5.0	
Recurrence of maltreatment [Federal measure]	8.3%	9.2%	CFSP: ≤ 9.7
Recurrence of maltreatment, ages 0-5	9.6%	11.0%	

FAR and Investigation Data

Accepted CPS reports, FY25 vs. FY24

	FY24	FY25	%	n
FAR	18,279	12,433	-32%	(5,846)
INTAKE	13,274	16,711	26%	3,437
TOTAL	31,553	29,144	-8%	(2,409)

- FAR-Family Assessment Response does have substantiation finding attached to the process.
- Investigations result in either a finding of substantiated or unsubstantiated.
- 26% increase of Investigation cases for 2025 can be a factor as well as reduction of reports accepted

Accepted CPS Reports by Response Type--FY24-25



Goal #1: Improve Safety and Risk Assessment and Services to Prevent Entry/Re-Entry Strategies (DRAFT)

- **Strategy #1.1: Increase the frequency and quality of worker/family contact**
- **Strategy #1.2: Increase the frequency and quality of supervision**
- **Strategy #1.3: (CFSP 1.2) Increase assessment and critical thinking through application and documentation of the ABCD Paradigm/Practice Model (increase safety practice)**
- **Strategy #1.4: Streamline safety-related service referral process to improve access**

Permanency

Indicators	FY24 Annual	FY25 Annual	FY26 Target
Children entering foster care who achieve permanency within 12 months (%) [Federal measure]	23.3%	21.9%	CFSP: $\geq 35.2\%$
Permanency for children in foster care 12-23 months [Federal measure]	49.2%	39.9%	CFSP: $\geq 43.8\%$
Permanency for children in foster care 24+ months [Federal measure]	43.5%	34.8%	CFSP: $\geq 37.3\%$
Placement moves per 1000 days in care [Federal measure]	3.94	4.45	CFSP: ≤ 4.48
Reentry to foster care (% over 12-month measurement period) [Federal measure]	15%	10%	CFSP: ≤ 5.6
Children in kinship placements (% CIP)	48%	51%	CFSP: $\geq 40\%$

Permanency outcome:
Children and youth in foster care will achieve timely permanency.

Goal #4: Improve Collaborative Efforts to Achieve Timely Permanency, With Special Focus on the First 12 Months (DRAFT)

- **Strategy #4.1: Establish an early In-Court Review teaming to review progress with Parents, Court, DCF and other Partners towards Permanency**
- **Strategy #4.2: Ensure use of ABCD Discussion Guides in Supervision (Gauge Progress in Programs)**
- **Strategy #4.3: Ensure review and critical thinking of any/all CQI review results during Supervision (In Home, Differential Response, Administrative Case Review, Child and Family Services Reviews)**

Questions?

Thank you



To: All DCF Staff
From: Tina L. Jefferson, LMSW, Deputy Commissioner of Child Protective Services
Date: September 2, 2025
Subject: **Services Post Majority (SPM) Extension of Care Beyond Age 21 Guidelines**

As noted in policy, extension of care beyond age 21 may be supported after a review of individual factors and when there are existing appropriations. The following is guidance for extended support waiver requests, which shall be governed by 28-1 Adolescent and Transitional Age Supports and 3-2-1 College/Post-Secondary Education (PSE) Assistance policies.

The department may be able to support an extension of care beyond age 21 after a review of materials and consideration of individual circumstances within existing appropriations:

- Youth is in compliance with criteria for SPM 18-21 and have a plan to finish school or vocational programming within a specified period of time. Consideration may be given for delays in completion due to extended IEP, mental health, behavioral health needs and/or pregnancy.
- Youth have an identified transition date to DMHAS/DDS. This date may be delayed by the receiving agency for completion of the PSE program after the youth's 21st birthday with the agreement of DCF and the receiving sister agency.
- In general, youth who may need an extension of care because of an elevated risk that basic needs will not be met without Department support, and no other adult-serving agency has responsibility to provide that support.

Unable to support request for extension of care within existing appropriations:

- Support for education beyond completion/graduation of an undergraduate PSE program.
- Out-of-state support when the relocation is not connected to an approved PSE program.
- Additional support beyond 3 months of completing an undergraduate PSE program.

Notes:

- Youth in CHEER requesting an extension of care may only be supported while residing in-state.
- Youth under an already approved waiver based on the above criteria will be given a 3-month transition date prior to the end of the waiver period. AO team members will work with the youth to help promote transition goals, and CO partners are available for brainstorming opportunities.
- Tuition, room and board fee support cannot exceed policy limits (i.e., the state system amount).
- In general, youth should be working on a defined educational and vocational plan/pathway.
- After a youth's 21st birthday, a waiver is in the Commissioner's sole discretion. Therefore, there is no opportunity for a fair hearing if the Commissioner denies the waiver.



