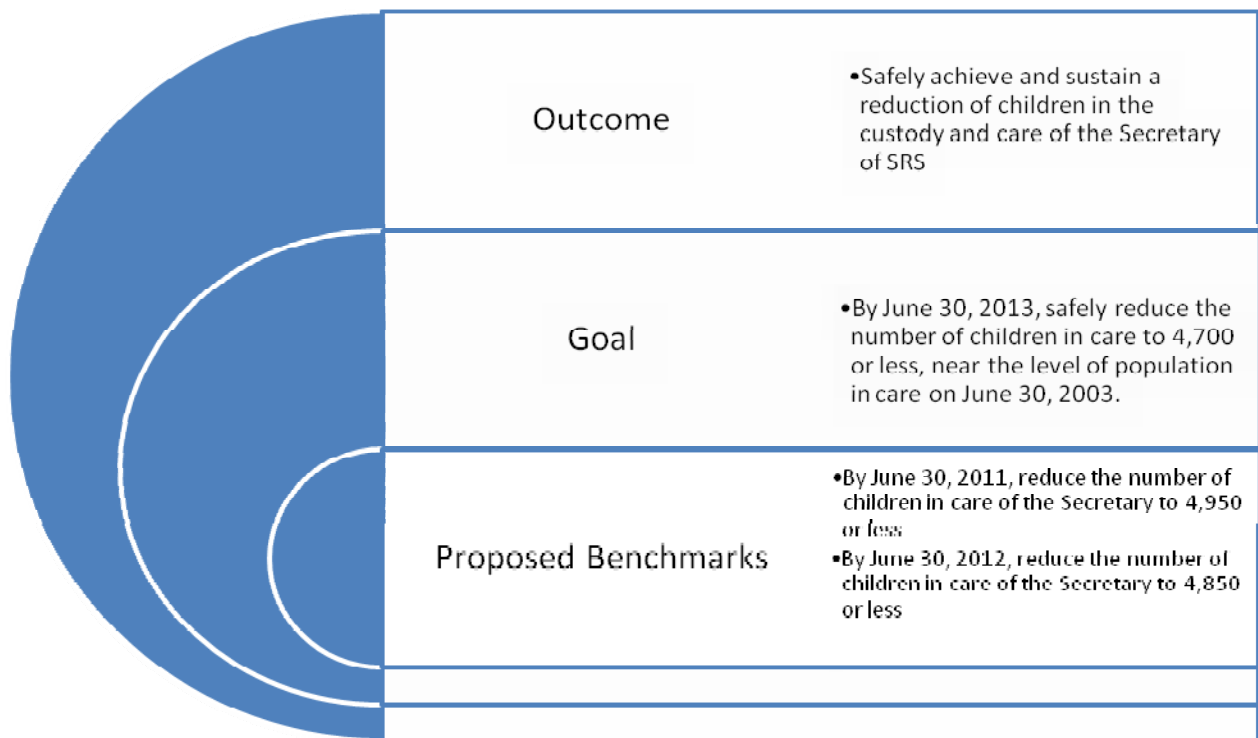


Kansas Project Work Documents

Kansas has been accepted into the Positioning Public Child Welfare Guidance Institute (PPCWG) sponsored by APSHA and Casey Family Programs. The purpose if the institute is to assist jurisdictions to implement effective change in an area defined as needing improvement. The institute uses strategic planning logic models as guidance and requires that Kansas organize and lead a project from concept through implementation and monitoring, exercising principles and administrative practice standards of public child welfare. Progress and results of the institute project will be published as a case study.

Project Scope



Project Focus Points

- Safely reduce the number of children removed for reasons of Non Abuse Neglect.
- Increase timely reintegration of children within 12 months of removal.
- Strengthen effective substance abuse and mental health interventions with families in contact with child welfare services
- Sustain effective interventions to safely prevent children removed for reason of neglect.



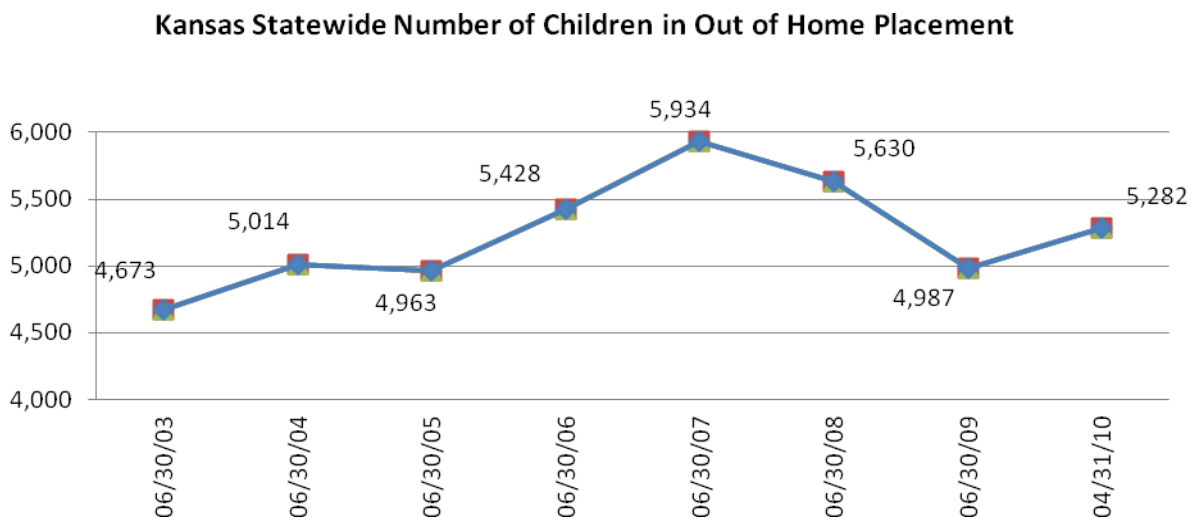
Safe Reduction of Children in Care of the Secretary of SRS

Charter

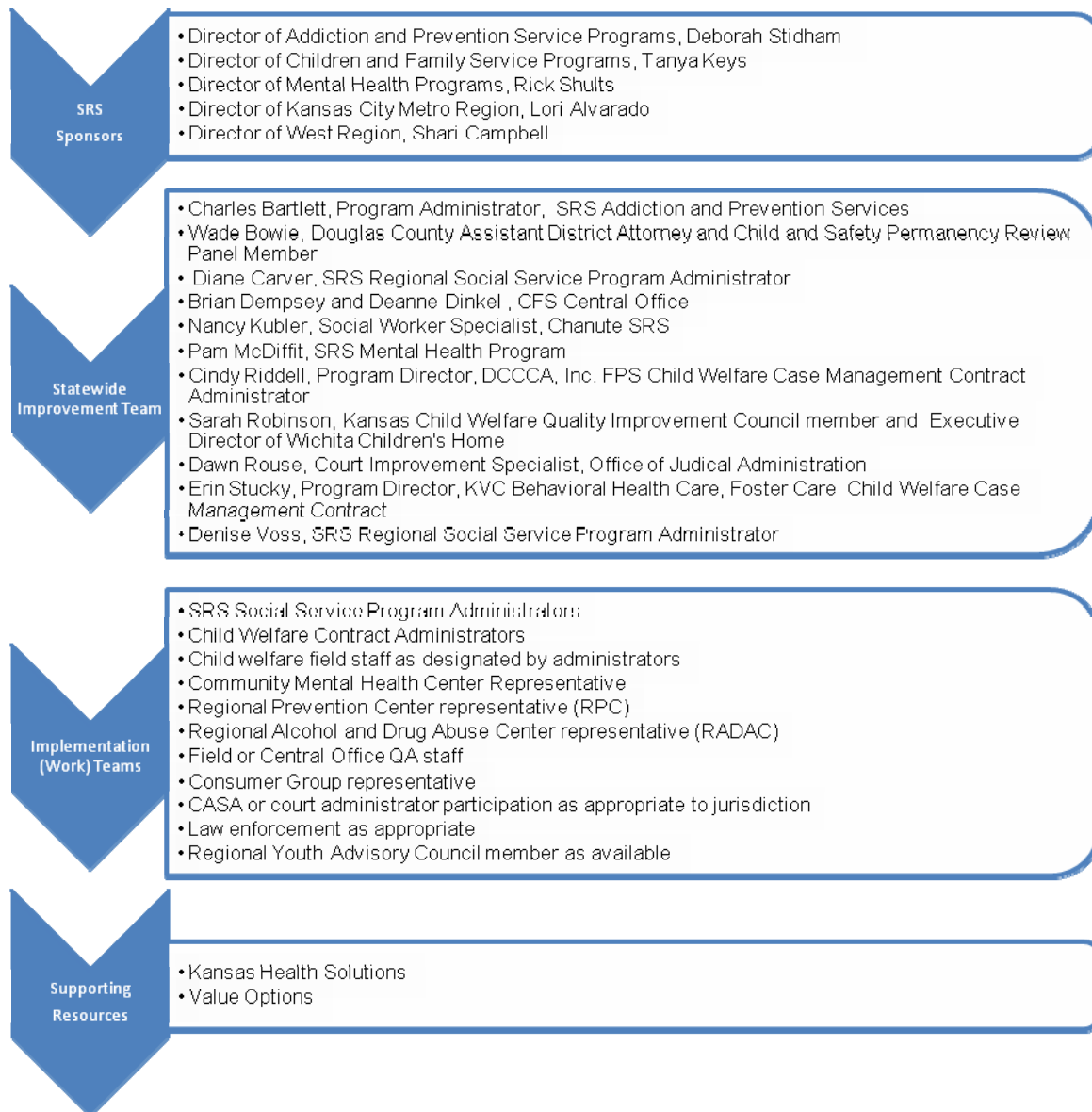
Business Need and Rationale

The centerpiece of agency’s work in communities is achievement of customer outcomes for safety, stability, permanency and positive well being. Efforts eliminating or bridging service delivery gaps are key work processes. Consistent with the agency’s strategic focus, this team is chartered to assess, plan and monitor implementation of initiatives yielding a safe reduction of children in care. In SFY2009, the number of children in care and custody of the Secretary was safely reduced by nearly 14% from the prior year. This safe reduction was the result of focused collaborations in communities to prevent removal into care and achieve timely permanency. In SFY2010, the number of children in care has increased nearly 8%, creating an opportunity for additional assessment of strengths and gaps in community around sustaining outcomes for families.

Table 1: Kansas Point In Time Child In Need of Care Population in Out of Home Placement



Committee Members and Leadership:



Scope of Work

The committee will assess trends in child welfare populations toward recommendations of core attributes of effective planning, partnership, and interventions that will sustain reductions in the number of children in care. In general, The team will:

- Examine gaps and strengths in statewide workforce capacity and assessment practices;
- Examine collaboration with mental health and substance abuse, courts, schools and other related resources or components of the public child welfare spectrum;
- Identify any state policy or practices the state should consider enhancing or modifying;
- Identify any areas for improvement and multi sector improvement;
- Provide regions with a template with which they will develop and submit local plans to sustain a reduction in care through prevention of non abuse neglect;
- Provide regions with a template with which they will develop and submit local plans to sustain a reduction in care through improvements with federal performance standards of timely reintegration in 12 months;
- Develop timelines for regions to submit their community's plan;
- Review region's plans for consistency with core attributes of effective planning timelines;
- Provide Feedback to regions teams and provide summary to Sponsor Group;
- Monitor progress of regions plans with final report of progress to the Sponsor Group no later than October 30, 2011.

Outcomes

Long Term:

- By June 30, 2013, safely reduce the number of children in care to 4,700 or less, near the level of population in care on June 30, 2003. (6/30/03 n= 4,673 children.)

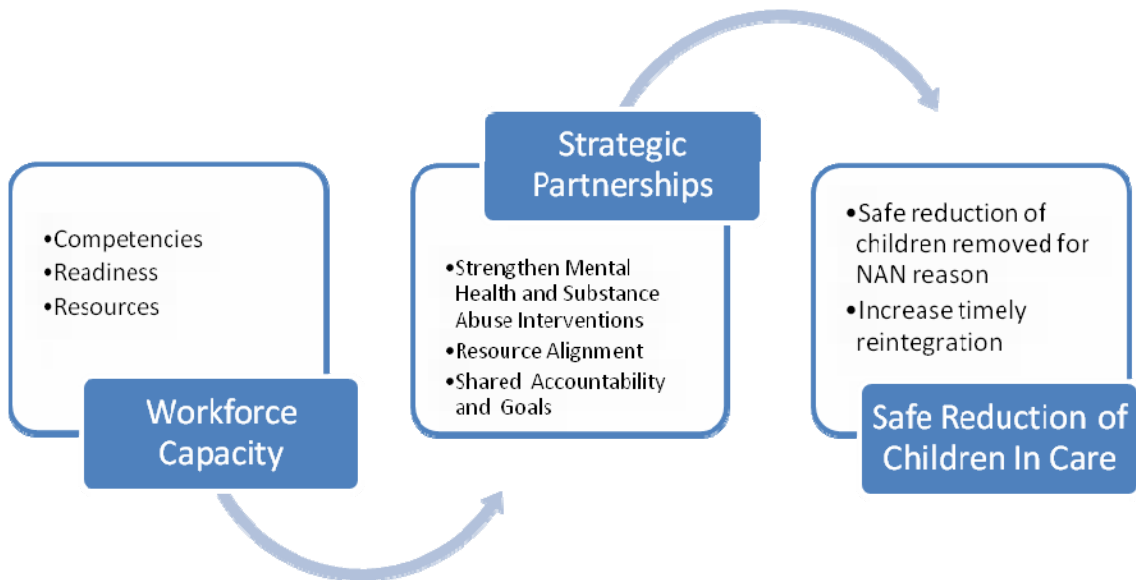
Mid Term:

- By June 30, 2011, reduce the number of children in care of the Secretary to 4,950 or less
- By June 30, 2012, reduce the number of children in care of the Secretary to 4,850 or less

Focus Points

- Safe reduction in the number of children removed for reasons of Non Abuse Neglect.
- Sustaining interventions to safely prevent children removed for reason of neglect.
- Effective substance abuse and mental health interventions with families
- Effective practices impacting timely reintegration in 12 months of removal

Approach:



Statewide Improvement Team Goals

- Assess statewide trends and attributes of child welfare populations
 - Understand Non Abuse and Neglect as a presenting situation of families served
 - Understand factors impacting timely reunification in 12 months
 - Understand intersection of behavioral and mental health services with child welfare
- Understand public child welfare guidance for strategic partnerships, workforce and communication.
- Assess capacity and gaps in Kansas Child Welfare impacting sustained reductions of children in care in areas of
 - Preventing Non Abuse and Neglect as a reason for removal
 - Achieving reunification in 12 months
 - Collaboration and continuity of mental health and substance abuse treatment
- Identify key areas of assessment that regions will address in a local plan to sustain a reduction of children in care.
- Set forth a framework of continuous improvement planning that regions create to sustain a reduction of children in care.
- Review regions plans for consistency with tenants of effective public child welfare guidance.
- Provide updates to the sponsor team regarding activities and regions work plans.

Completion Date

Commitment of team members will not exceed 18 months from the date of project commencement. Intensity of work and frequency of convening will diminish and shift to monitoring once a community's projects are implemented.

Customer Impact

[To be refined by the statewide continuous improvement team using outcomes and benchmarks as a foundation for impact]

Communication

[To be developed by the statewide continuous improvement team]

Project Planner Activities

[To be developed by the statewide continuous improvement team and maintained by state lead staff for the project]



PPCVG.pdf

Implementation Framework

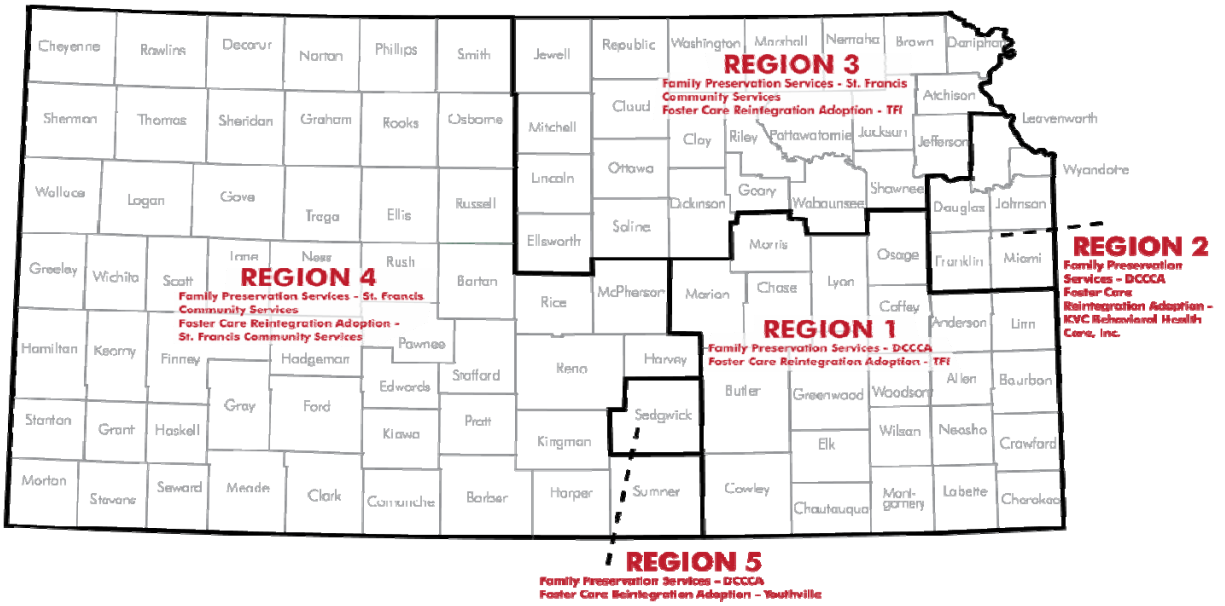
[To be developed by the statewide continuous improvement team]

Project Conclusion Information

[To be completed by the statewide continuous improvement team]

Appendix I Reference Data and Information

Figure 1 : SRS Child Welfare Contract Region Map



Contract Region 1 covers SRS Southeast and Eastern counties of the SRS South Central. Contract Region 2 covers Kansas City Metro. Contract Region 3 covers Northeast. Region 4 covers SRs West Region and Region 5 covers the SRS Wichita Region.

Table 2: Point in time comparison estimates 4/30/10 to 6/30/03 population in care data

	(a) Current Region	(b) Est. # in OOH on 6/30/03	(c) # Children OOH 4/30/2010	(d) Region as % of State OOH	(e) Est. # in OOH w/ 2011 safe reduction goal achieved	(f) Dif (+/-) OOH 4/30/10 and 2011 goal	(g) Est. # safe reduction children via timely permanency to achieve 2011 goal	(h) estimate # safe reduction of children via prevention to achieve 2011 goal	# >	% >
SRS Region	Kansas City Metro	1,049	1,050	19.9%	984	66	33	33		
	Northeast	754	1,245	23.6%	1,167	78	39	39	491	65%
	South Central	597	863	16.3%	809	54	27	27	266	45%
	Southeast	497	557	10.5%	522	35	18	18	60	12%
	West	440	583	11.0%	546	37	18	18	143	33%
	Wichita	1,336	984	18.6%	922	62	31	31		
	Statewide	4,673	5,282	100.0%	4,950	332	166	166		
Contract Region	Region 1	723	904	17.1%	847	57	28	28		
	Region 2	1,049	1,050	19.9%	984	66	33	33		
	Region 3	754	1,245	23.6%	1167	78	39	39		
	Region 4	811	1,099	20.8%	1030	69	35	35		
	Region 5	1,336	984	18.6%	922	62	31	31		
	Statewide	4,673	5,282	100.0%	4,950	332	166	166		

- Kansas City and Wichita's populations in care are nearly = or < the number of children in care on 6/30/03
- West Region experienced a 33% increase between 2003 and 2010
- Northeast/Region 2 experienced a 65% increase between 2003 and 2010
- South Central experienced a 45% increase between 2003 and 2010
- Southeast experienced a 12% increase between 2003 and 2010

Table 4: SFY2010 Custody Prevention Projects for SRS Region.

Through collaboration with community partners, each SRS region identifies an emphasis or focus population for safe reduction of entries into care with indicators and timeframes for success.

SRS Region	Projects	Meets Performance	Comments
Southeast	By June 30, 2010 safely reduce by 10% the number of all Children and Youth removed into Out of Home Placement in Crawford County.		For the period of July to April 2010, there has been a 2% reduction in the number of children removed into care compared to the same months in SFY2009.
KC Metro	In SFY2010, Leavenworth County (LV) will decrease the disproportionality by 12% for African American children entering SRS custody. This will move Leavenworth from the extreme range to the moderate range. (Project #1)		This indicator will be measured at year end.
	By June 30, 2010 in LV county, safely reduce the number of children entering custody by 10% from the number in SFY09. (Project #2)	■	
Northeast	By June 30, 2010 safely reduce by 3% the number of all Children and Youth removed into Out of Home Placement in the SRS Northeast Region. Project #1		YTD Safe reduction goals for the have not been met. However, removals for March were 28% less then February removals.
	By June 30, 2010 reduce by 15% the number of all Children and Youth removed into Out of Home Placement who are reintegrated within 7 days or less. Project #2		Safe reduction goals for the population of parental substance abuse have not been met. There have been 6 additional removals for this population since January.
	By June 30, 2010 safely reduce by 5% the number of all Children and Youth removed into Out of Home Placement for reason of Parental Substance Abuse in Shawnee County. Project #3		Safe reduction goals for the population of parental substance abuse have not been met. Removals in Shawnee county have decreased by 33% between February and March, 2010.
South Central	By June 30, 2010 safely reduce by 5% the number of youth 13 and older removed into Out of Home Placement in Butler County. Project #1	■	
	By June 30, 2010 safely reduce by 5% the number of youth 13 and older removed into Out of Home Placement in Reno County. Project #2		Safe reduction goals for the population of older youth have not been met and total removals in Reno county increased 250% from February to March, 2010.
West	By June 30, 2010 safely reduce the number of children ages 7-15 entering out of home placement for reason of truancy in Ford and Finney counties by 30% from the number of children removed in SFY09.	■	
Wichita	By June 30, 2010 safely reduce by 10% the number of Children removed into Out of Home Placement for reason of Physical Neglect for Sedgwick County.		Safe reduction goals for the population of physical neglect have not been met; however, the total number of removals in Sedgwick county decreased 20% compared to the same time period in SFY 09.