

CT GIS State of the State

CT GIS Office Year in Review

November 19th, 2025



CONNECTICUT
Policy and Management

About the Presenter



Alfredo Herrera

Geographic Information Officer
alfredo.Herrera@ct.gov

GIS Office & Geographic Information Officer (GIO)

The Connecticut GIS Office is part of the Data and Policy Analytics Unit at the Office of Policy and Management (OPM). Created in 2022 and led by the state's Geographic Information Officer (GIO), our office coordinates and collaborates with a wide range of stakeholders within and outside of Connecticut.

We're here to serve as Connecticut's go-to resource for all things geospatial. Our team works closely with state agencies, regional councils of governments, municipalities, and other partners to support and coordinate geospatial efforts across the state.

What We Do

GIS Data Coordination: Facilitate statewide collection, compilation, and sharing of geospatial data.

Open Data Access: Manage the CT Geodata Portal, a public clearinghouse for geospatial datasets.

Interagency Support: Provide geospatial expertise and tools to assist cross-agency initiatives and collaboration.

Outreach & Training: Provide education and resources to expand GIS knowledge and use.

Orthoimagery & Lidar: Administer statewide aerial imagery and elevation data programs.

Standards & Guidance: Establish and promote geospatial data standards and best practices.

Data Processing: Aggregate, organize, and create datasets to support analysis and decision-making.

Broadband Mapping: Develop broadband data and maps per C.G.S. 16-330b.

GIS Office Strategy

Vision

The CT GIS Office seeks to be a center of excellence for geospatial data and analysis in Connecticut by leading the GIS community to standardized and efficient geospatial data collection, aggregation, and dissemination, enabling stakeholders at all levels to leverage high-quality data assets to inform decision-making.

Mission

The mission of the CT GIS Office is to coordinate the acquisition, development, and sharing of geospatial data in Connecticut. The GIS Office will develop and communicate standards for the management of GIS data and seek to support its use across local and state organizations.

Goals

Goal 1:

Use effective governance, policies, and standards to manage geospatial data.

Goal 2:

Implement a sustainable funding model for imagery acquisition, GIS data, and geospatial technologies.

Goal 3:

Increase access to data, spatial analysis, web services, and visualization capabilities for local and regional governments and other stakeholders.

Goal 4:

Provide direct analytic support and enhance capacity building for State Agencies.

Goal 5:

Broaden communication and engagement across different levels of government and other organizations.

GIS Office Staff Update

Carl Z. resigned in
July.

*Recruitment for
the GIS Coordinator
position is now
underway.

*December 2025 Update:
Sarah Hurley was promoted to
GIS Coordinator!

CT Geographic Information Office (GIO)

Alfredo Herrera – Geographic Information
Officer

Ashley Benitez – GIS Coordinator

Recruitment Underway – GIS Coordinator

Leah Hodges – GIS Analyst

Sarah Hurley – GIS Analyst



**What did we do
in 2025?**

Annual Update of Strategic Plan

- Updated plan approved by the Advisory Council on August 28th, 2025

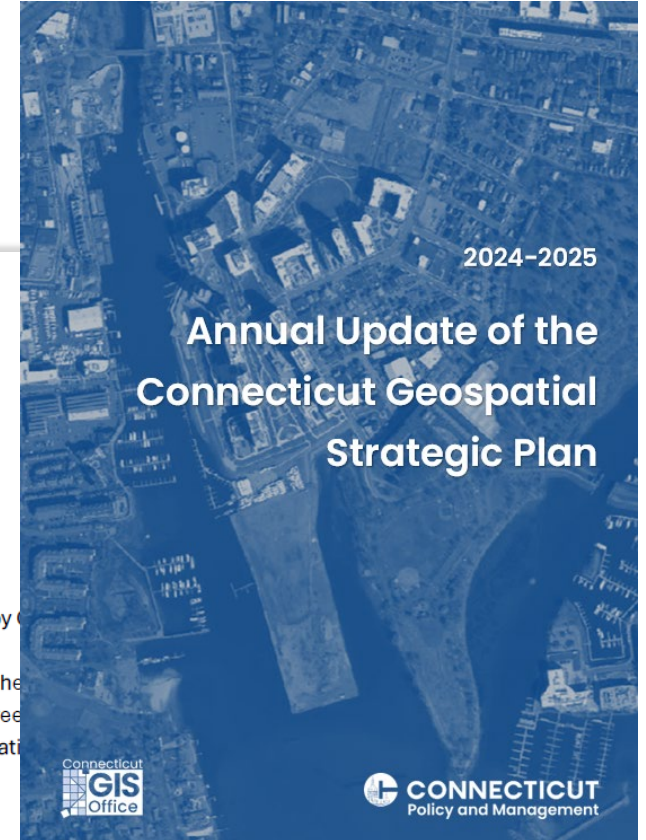
To: Members of the GIS Advisory Council (GAC)
From: Carl Zimmerman, PhD, GIS Coordinator
Re: Annual Update of Geospatial Strategic Plan
Date: 06.20.2025

Dear GAC members:

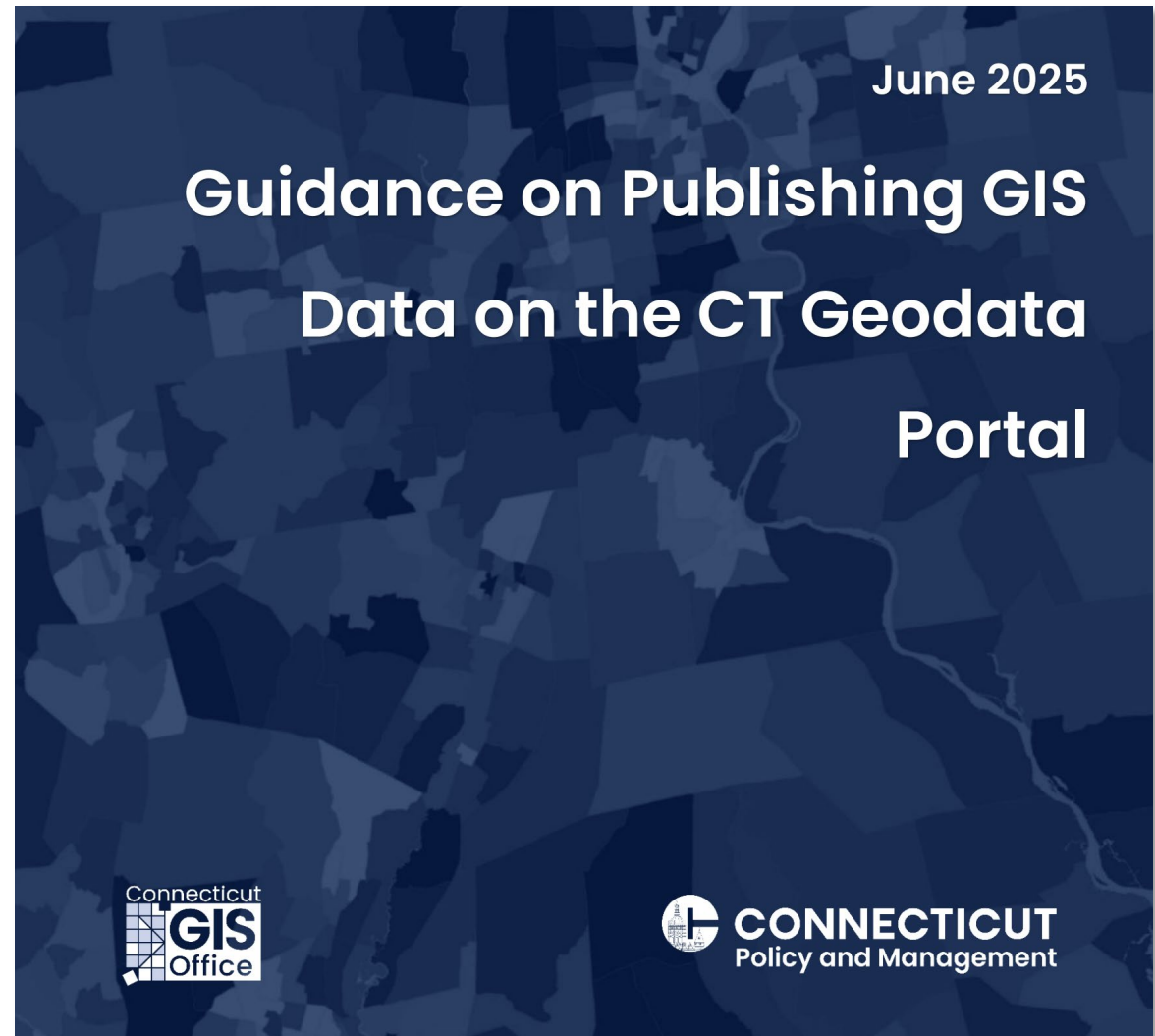
The first draft of the Annual Update of the Geospatial Strategic Plan was reviewed by members in the spring. Comments focused on making the Annual Update a progress/update report and less focused on being a stand-alone document about the GIS system. In addition, several members wanted to see a closer relationship between Annual achievements and the specific objectives and goals from last year's Geospatial Strategic Plan.

The attached updated document (##v5) reflects those and other comments from members to make it more closely aligned with the Geospatial Strategic Plan. The most important part of the document is Tables 1-5, which provide specificity about progress for each objective. Summary information is provided in the executive summary and text. Additional details about the approaches are found in the Appendices.

I have attached the updated document for your review and will briefly discuss the status at the GAC's meeting next week. The expectation is that a vote on the approval of the document will be at the next meeting in August. Please contact me if you have comments or questions.



Geodata Portal Publishing Guidelines



Final draft is published here:
[CT GIS Office Guidance Documents](#)

GIS Mapping Accessibility Guidelines

Connecticut GIS Mapping Accessibility Guidance

DRAFT

CT GIS Office

November 2025

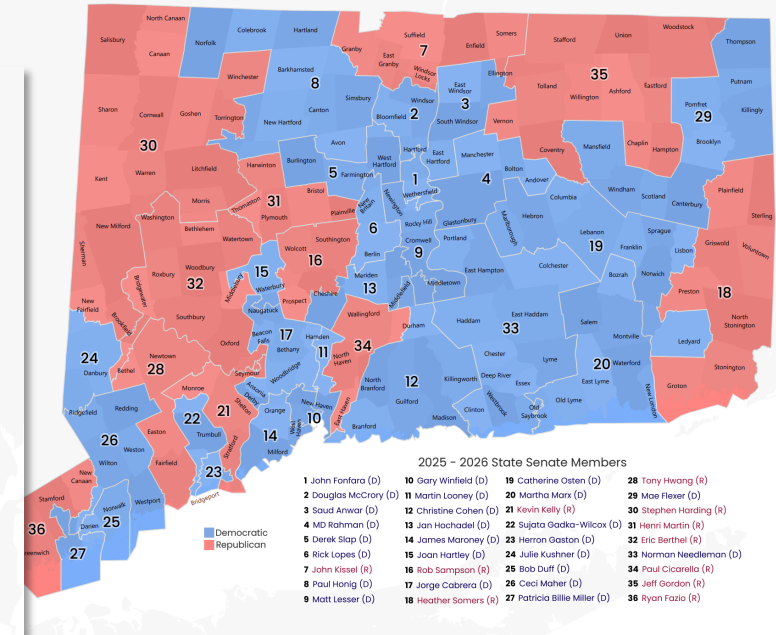
This document provides guidance for ensuring that GIS maps and applications produced by the State of Connecticut and its partners are accessible to all users, including individuals with disabilities.

Anticipated to be published in early December.

Legislative Maps



Connecticut State Senate | 2025 – 2026

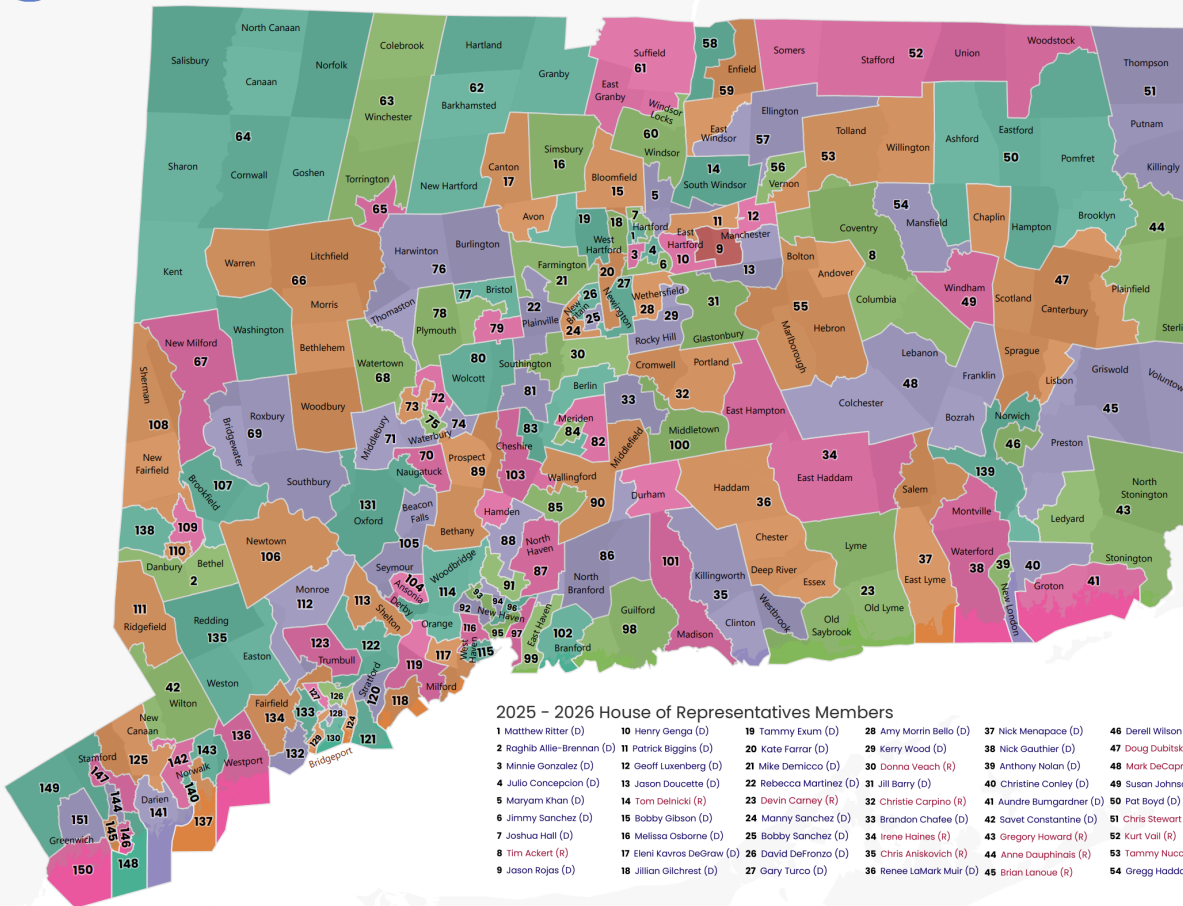


New legislative maps by district with current elected representatives, including versions colored by party.

Link to see all maps: [GIS Office – Legislative Maps](#)

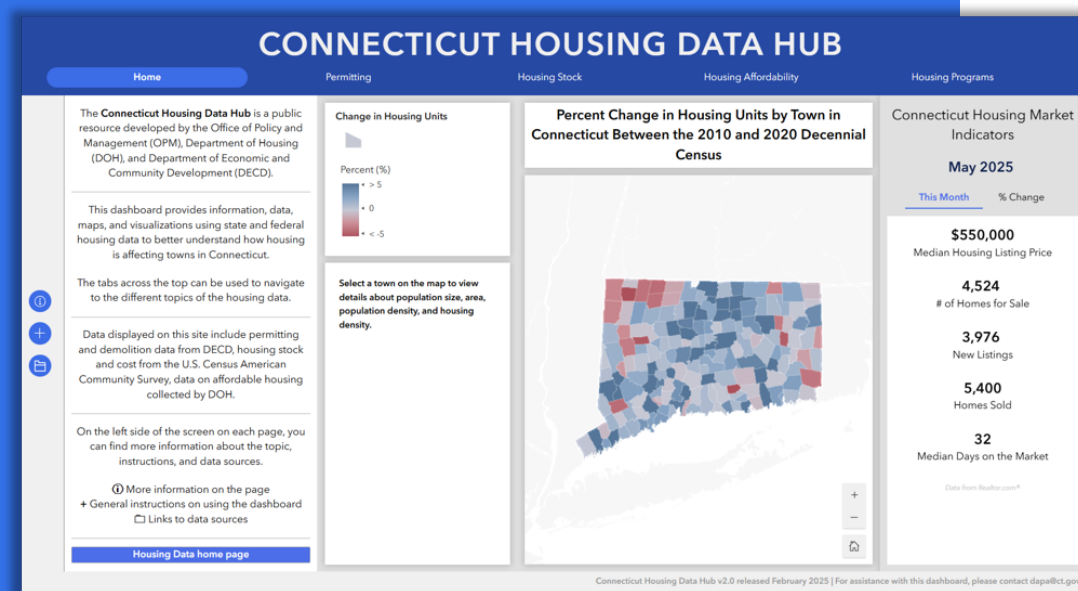
Link to layers: [Geodata Portal layers](#)

Connecticut House of Representatives | 2025 – 2026



CT Housing Data Hub

- A dashboard that allows users to visualize different facets of housing data for Connecticut at the town level.
- The recent passage of HB8002, if signed into law, means that the GIS Office will be providing data and tools to enable COGs and municipalities to determine what developable lands they have available for housing.



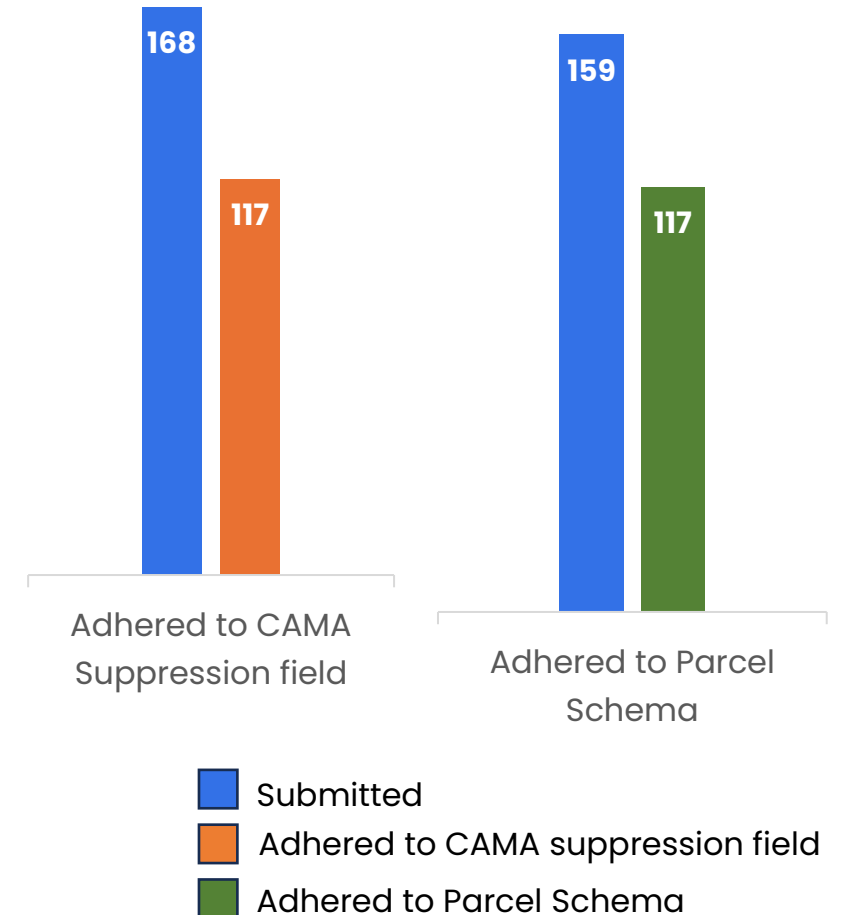
2025 Parcel and CAMA Collection

The 2025 parcel and CAMA consolidation finished, and updated dataset published.

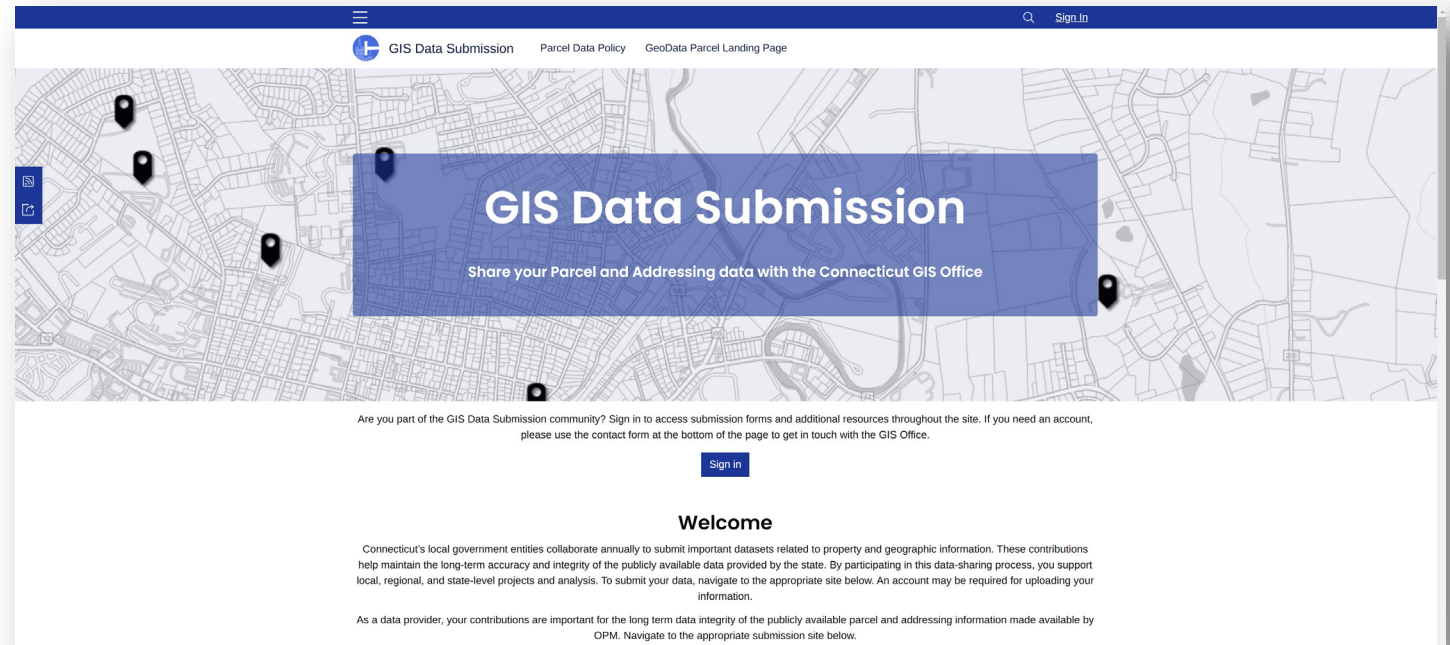
–“Property Zip” and “Mailing Zip” fields added to the dataset

Results:

- 159 towns submitted Parcels
 - 117 adhered to the parcel standard
- 168 towns submitted CAMA
- 131 Towns Suppress Data
 - 117 complied with the submission field
 - 38/169 towns do not suppress information
 - 23 out of compliance for suppression



New CAMA and Parcel Submission Site



Parcel and CAMA Improvement Grants

Funding to the Council of Governments to support the improvement of municipal parcel and CAMA data



Targets:

Recency

Match Rates

Data
Completeness

Geometry

Total funds: \$2.04 million
(American Rescue Plan Act)

Distributed based on the number of towns.

The GIS Office provided data analyses on these targets.

Tiered Prioritization

Primary

- **Recency:** For municipalities that have not submitted updated data in the past years.
- **CAMA to Parcel Match Rate:** Every CAMA entry must have a corresponding parcel in the parcel layer. For municipalities with match rate of 98 or lower.

Secondary

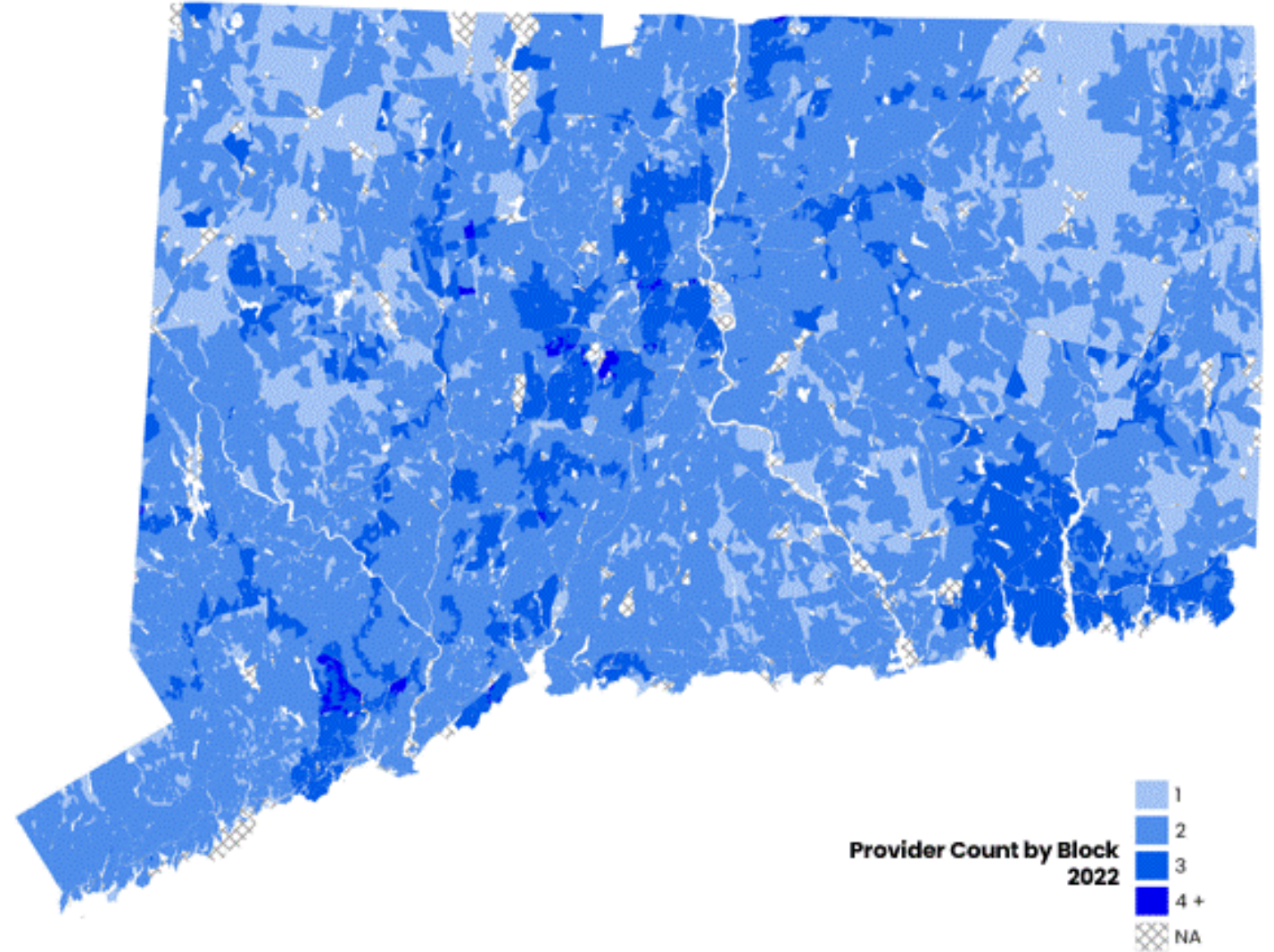
- **Completeness of CAMA Fields:** Ensuring that the 40 attribute fields included in the [Connecticut State Parcel Layer](#) are as fully populated as possible.
- **Parcel to CAMA Match Rate:** Verifying that non-assessable parcels, such as rights-of-way and public lands, are correctly identified, and that all assessable properties have a corresponding parcel in the GIS and are correctly linked to CAMA. For municipalities with a match rate of 99 or lower.

Tertiary

- **Geometric Quality of Parcels:** Remaining funds may be distributed to municipalities for the improvement of the geometric quality of parcels following recommendations from the GIS Office and GIS Advisory Council.

Broadband Mapping

<https://broadbandmaps.ct.gov/>



Change of No. of Internet Service Providers per Census Block
(2022 vs 2024)

Broadband Mapping

In progress:

- CT Broadband Data Collection (data as of December 31, 2024).
 - Conducted meetings with ISPs to request data on availability and adoption with data aligning Fabric Version 6.
 - No changes to schema.
- Working on several updates to Broadband Hub.
 - Visit our hub and let us know your suggestions!

Availability: presence of broadband internet service that meets a minimum standard of speed and quality at a specific location

Adoption: the extent to which households or individuals subscribe to and use broadband internet services that are available to them.

Fabric: Broadband Serviceable Location Fabric (Fabric) is a dataset developed by CostQuest of all locations where fixed broadband internet access service is or could be installed.

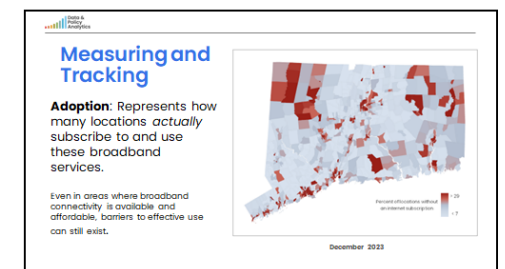
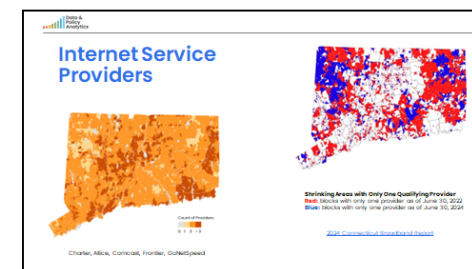
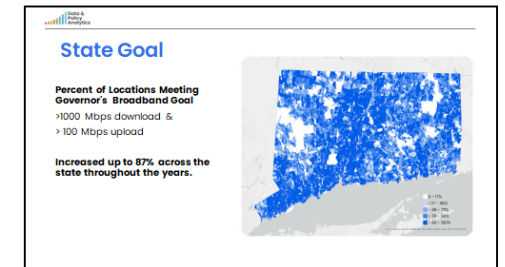
FCC: Federal Communications Commission

ISPs: Internet Service Providers

Intro to Broadband Data in CT

Webinar recording available:

<https://clear.uconn.edu/webinars/2025-webinar-library/>



Imagery and Lidar Capture

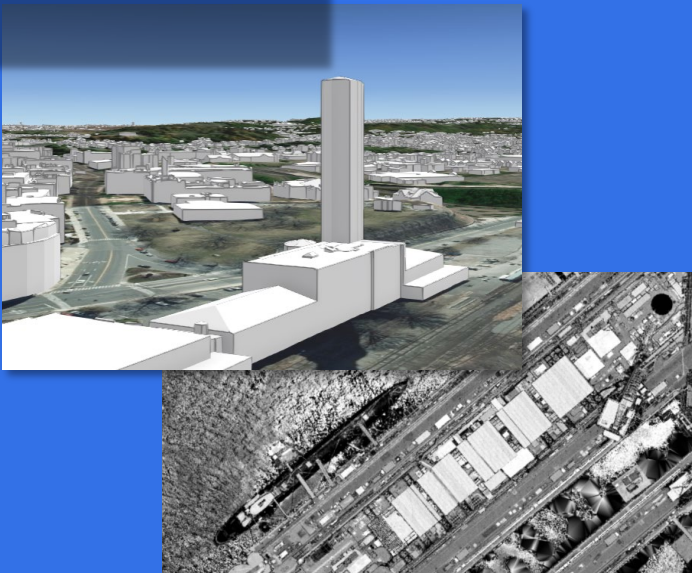
All 2023 data products delivered.

2025 NAIP imagery captured and awaiting delivery.

Planning for 2026 flight already underway.

- Flight slated for early Spring of 2026
- Data deliverables expected by December of 2026.

See Dewberry's session later this morning for more details!

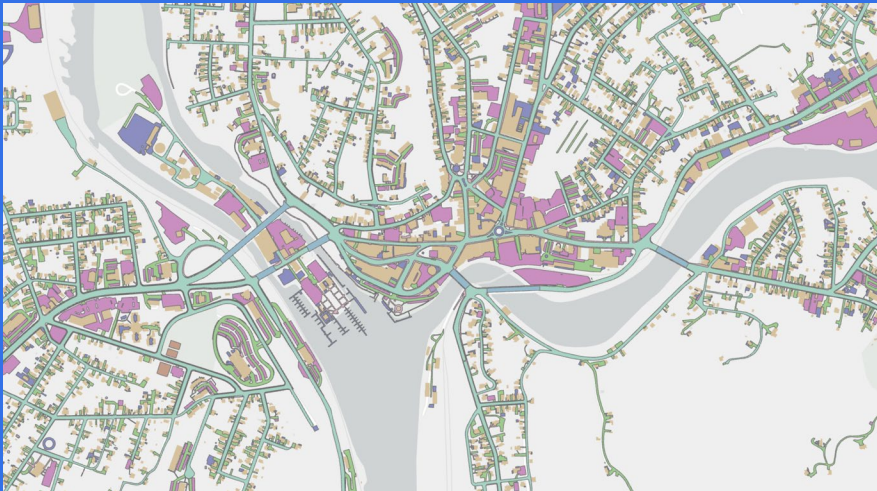


2023 CT GIS Office True Ortho



2023 NAIP

Impervious Cover



Ecopia has delivered impervious cover and transportation lane data.

Two groups of deliverables:

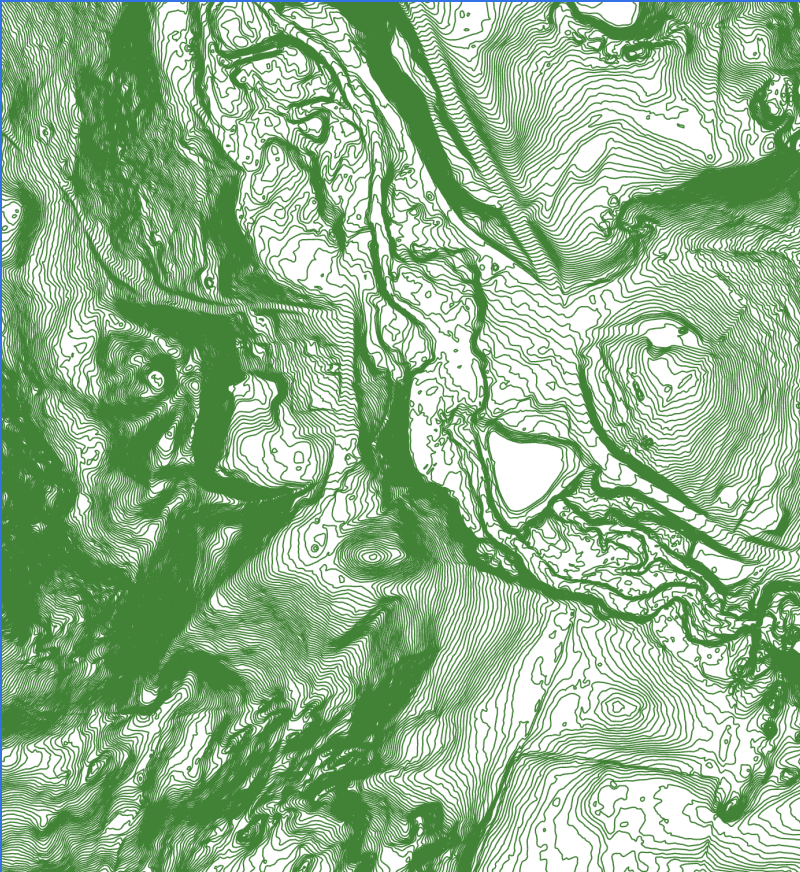
- Impervious cover
 - Driveways, roads, sidewalks, etc.
 - Buildings being compared against Dewberry's.
- Pavement/Transportation lane designations.

QA/QC Complete.

- Report completed and sent to Ecopia for final edits.

Data publication in the queue.

Contours and other Data



The GIS Office has produced and published a vector tile service version of the 1-foot contour dataset.

We have also created a feature service of the 1-foot contours that is filterable by town or COG name.

- This dataset has 20M+ features!

We are also in the process of creating and publishing a steep slopes dataset in partnership with esri.

- This dataset will have at least 26M+ features or potentially more!

The New England 3DHP Regional Partnership

FY 25 DCA not funded.

Same partners for FY26*.

– CT, RI, MA, VT, & ME

Modified focus for CT joint submission. Second CT submission to help complete most of the state

- CT DCA Watersheds
- New England DCA Watersheds
- FY25 DCA States
- New Participants for FY26 DCA

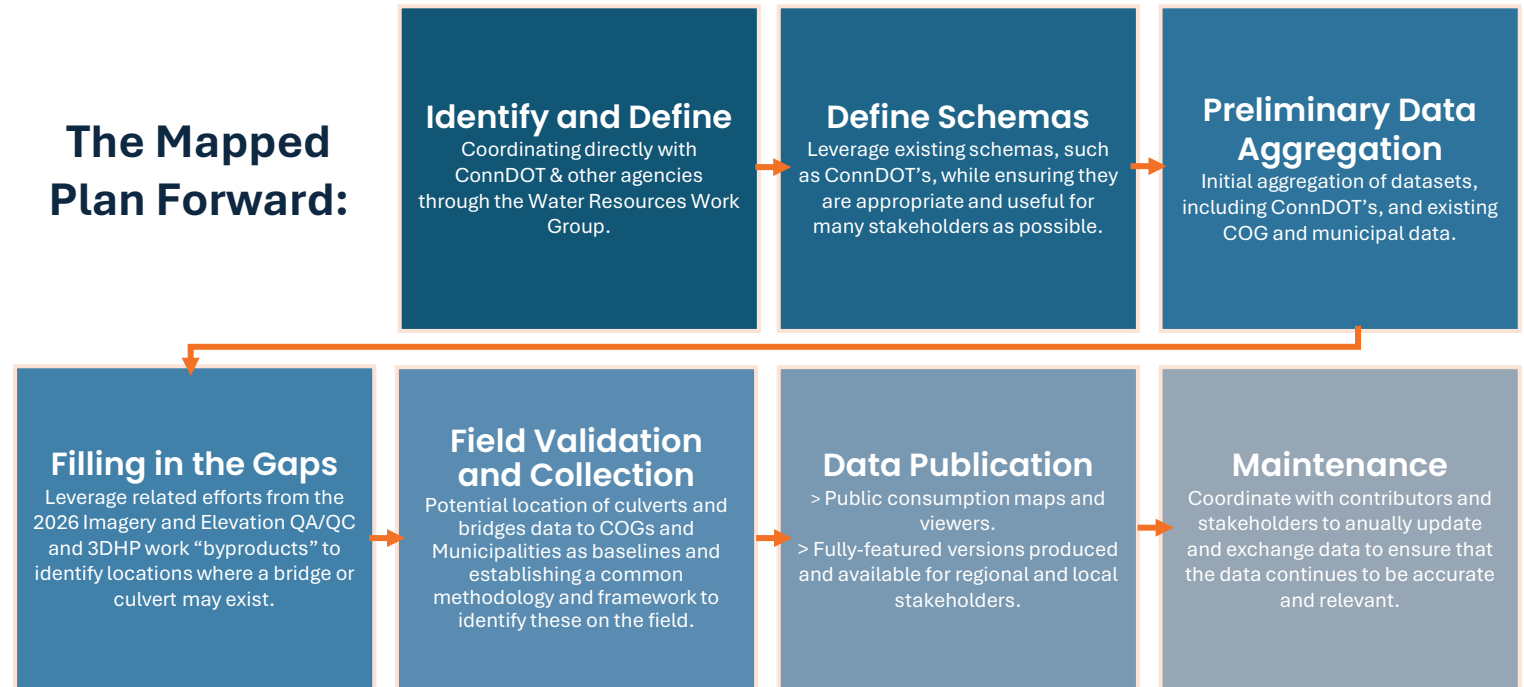


Outdated and inconsistent data mapping will be replaced with high-accuracy data aligned with 3DEP standards, enabling modern 3D modeling and detailed flow tracing from rivers and streams to coastal areas.

PA 25-33 Culvert and Bridge Data Collection

Sec. 8. (NEW) (Effective July 1, 2025) On or before May 1, 2028, and annually thereafter, each municipality shall submit a geospatial data file of each culvert and bridge within the control and boundaries of such municipality to the regional council of governments of which it is a member in a form and manner prescribed by the Office of Policy and Management, in consultation with the Departments of Transportation and Energy and Environmental Protection.

The Mapped Plan Forward:



GIS Office + CLEAR Webinar Series

The webinar series kicked off again on September 10th after a summer break.

Coming Soon:

- Dec. 4th – The 3D Hydrography Program: Modernizing the Nation's Water Data Infrastructure (Part 3)
- Dec. 11th – Connecticut's Lidar and Orthoimagery Revisited
- More webinars coming in the new year, stay tuned!



**Questions? Find us at our
table.**

