

# GIS Advisory Council Meeting

CT GIS Office

Date: August 28th, 2025



**CONNECTICUT**  
Policy and Management

# Agenda

Introductions/Attendance

Council Administration

Annual Update of the Strategic Plan

GISO Priority Topics and Working Group updates:

Parcel and CAMA Updates

Statewide Addressing Updates

Imagery and LiDAR Data Updates

Hydrography and Flood Data Updates

Public Comment

Closing Remarks

Adjourn



# Introductions and Attendance

# GIS Advisory Council

Appointing Authority	Appointee
OPM	Alfredo Herrera
OPM	Scott Gaul
DEEP	Stuart DeLand
ConnDOT	Elizabeth Congo
DESPP	Dan Czaja
DPH	Gary Archambault
CTCOG	Erik Snowden
CTCOG	Mark Hoover
CCM	John Guskowski
CCM	Tracy DeGrazia
UConn	Emily Wilson
PURA	Peter Sampiere
GA	Meghan McGaffin
GA	Vacant



# Council Administration

# GIS Office Staff Update

Carl Z. resigned in  
July.

Recruitment for the  
GIS Coordinator  
position is now  
underway.

---

## CT Geographic Information Office (GIO)

---

Alfredo Herrera – Geographic Information  
Officer

---

Ashley Benitez – GIS Coordinator

---

Recruitment Underway – GIS Coordinator

---

Leah Hodges – GIS Analyst

---

Sarah Hurley – GIS Analyst

---

# Annual Update of Strategic Plan

- Updated memo and draft sent on June 20<sup>th</sup>, 2025
- Draft previously reviewed by GAC members
- Members sent comments
- Revisions incorporated into significantly update doc

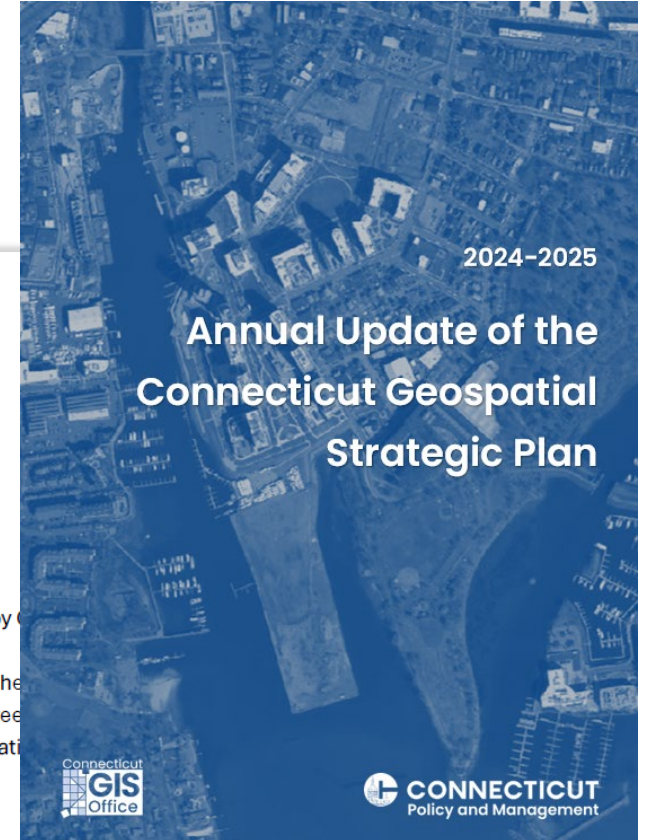
To: Members of the GIS Advisory Council (GAC)  
From: Carl Zimmerman, PhD, GIS Coordinator  
Re: Annual Update of Geospatial Strategic Plan  
Date: 06.20.2025

Dear GAC members:

The first draft of the Annual Update of the Geospatial Strategic Plan was reviewed by GAC members in the spring. Comments focused on making the Annual Update a progress/update report and less focused on being a stand-alone document about the GIS system. In addition, several members wanted to see a closer relationship between Annual achievements and the specific objectives and goals from last year's Geospatial Strategic Plan.

The attached updated document (##v5) reflects those and other comments from members to make it more closely aligned with the Geospatial Strategic Plan. The most important part of the document is Tables 1-5, which provide specificity about progress for each objective. Summary information is provided in the executive summary and text. Additional details about the approaches are found in the Appendices.

I have attached the updated document for your review and will briefly discuss the status at the GAC's meeting next week. The expectation is that a vote on the approval of the document will be at the next meeting in August. Please contact me if you have comments or questions.



# Document Adjustments

## Summary of internal review

The GISO staff conducted a detailed internal evaluation of where we stand on our progress toward the five-year goals, objectives, activities, and outputs for the Geospatial Strategic Plan. Progress has been achieved on most objectives. Of the 44 outputs listed in the Geospatial Strategic Plan, 16 were completed, 14 were more than 50% complete, and 12 had some work completed. We rate ourselves as having achieved an overall score of “B” on our current progress towards the goals of the five-year plan. The aggregated ranking<sup>5</sup> of the five goals are:

1. Goal 5 (engagement): **A-**
2. Goal 3 (access): **B+**
3. Goal 2(funding): **B-**
4. Goal 1 (governance): **C+**
5. Goal 4 (support Agencies): **C+**

The objectives with the greatest progress are:

- Communication and outreach (obj 2.2, obj 5.1)
- Data acquisition, access, development and acquisition (obj 3.1, 3.2)
- Improvements in the parcel and CAMA data system / operations (obj 1.2)

The objectives with the least progress include:

- Providing wider access to GIS software for state agencies (obj 4.5)
- Giving access to automation tools and solution to stakeholders (obj 1.2)
- Planning and development of a data architecture for addressing (obj 1.2)
- Creation of an intake process for projects (obj 4.2)

## Goal 1

*Use effective governance, policies, and standards to manage geospatial data.*

**Overall Grade: C+**

Table 1: Progress and objectives for Goal 1

Objective	Grade	Progress	Progress	Incomplete and Unfinished Objectives
Obj (1.1) Implement and strengthen data standards and governance to facilitate reliable access to authoritative versions of the Spatial Data Infrastructure (SDI) core data sets	<b>B-</b>	<b>Parcel Grant Improvement Program</b> provides one-time grant support for towns and COGs to improve cadastral data quality. Program underway for COGs. Regular meetings with COGs to discuss grant and policies.	The GISO and CT DEEP collaborated with four other New England states to submit a <b>joint USGS 3D Hydrography Program (3DHP) Data Collaboration Announcement (DCA) grant application.</b>	Continue working on parcel creation guidelines document. Partially finished draft. Limited progress on other standards and guidelines through prioritization and stakeholder outreach.
Obj (1.2) Develop data management and analytic capacities including automated data checks and validation within the GIS Office	<b>B-</b>	Staff attend 2024 ESRI development conference and regional conferences to learn about latest software technologies and relevant geospatial topics. Publish standardized parcel geometry and assessment data for all 169 towns of CT. <b>Created Parcel upload and tracking hub site.</b>	Staff using Python and R to automate pull of data from external sources for applications.	GitHub site for making processing scripts available to stakeholders is being built. Reviewing addressing automation solutions, either internal or external for addressing and geocoding.
Obj (1.3) Maintain an	<b>D</b>	Surveyed stakeholders		Not currently





# GISO Priority Topics and Working Group Updates

A decorative graphic on the left side of the slide. It consists of a grid of light blue 'x' marks. A vertical white line is positioned to the right of the grid, extending from the top of the text area down to the bottom of the slide.

# Parcel and CAMA Updates

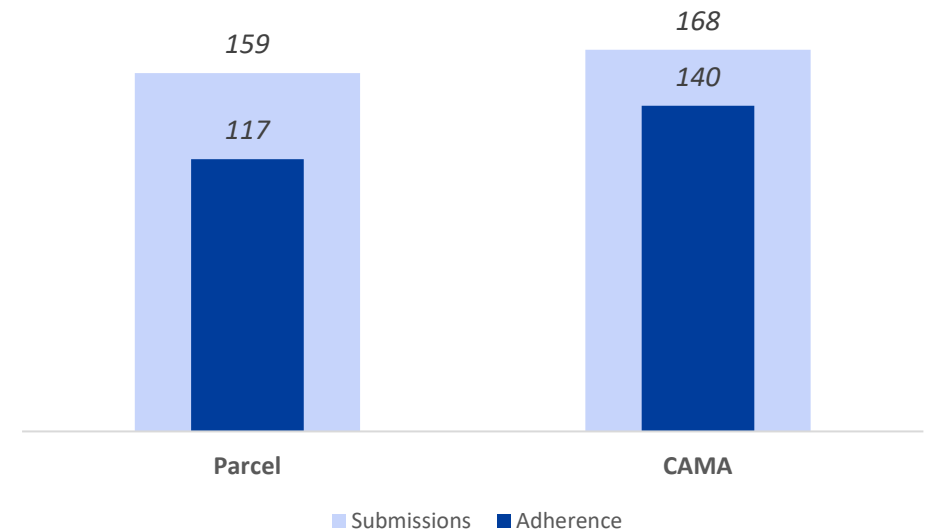
# Parcel and CAMA Collection

## Initial Processing Completed:

- All COG submissions have been successfully processed.
- Parcel and CAMA Layer in the QA/QC Process

## Metadata final numbers:

- 159 towns submitted Parcels
  - 117 adhered to the parcel standard
- 168 towns submitted CAMA
  - 140 complied with Suppression
  - 24 out of compliance



# 2024–2026 Parcel and CAMA Grants

- COGs are at different stages of engagement for the grant-funded contracts. Some have initiated or completed work for municipalities.
- ~2% of the total \$2 million grant fund has been spent to date.
- Work is being carried out through a mix of in-house efforts and vendor partnerships.
- Significant work has gone into digitizing condominiums using 2023 building footprints.
- Ongoing discussions focused on standardizing key CAMA and parcel fields such as Parcel ID and State Use Codes (abstract coding system to classify and report residential, commercial, industrial, vacant land, etc.)

# Statewide Addressing Updates

- Addresses collected by state agencies across many programs often lack consistency.
- Some records are impossible to geocode because of incomplete addresses, mailing addresses are mixed in the same fields, etc.
- Working in developing a guidance on **location address** for state administrative data.
  - Define difference between location versus mailing address
  - Define a schema for complete location address
  - Recommendations for implementation

# Statewide Addressing Updates

- **Separate Location and Mailing Address Fields**
- **Minimum Location Address Standard (below)**
- **Implementation**
  - Review existing datasets for incomplete/incorrect data
  - Coordinate with GISO for support with address validation and geocoding
  - Recommendations when collecting address data (e.g., use of dropdowns to narrow address search)

Street Address	Municipality	State	ZIP Code
(Pre) Number (Suffix) (Pre) Street Name (Post)	1 of 169	CT	06XXX

# Imagery and LiDAR Update

- IC work status
  - Some reprocessing by Ecopia is still underway to capture areas at the state border.
- Transportation Layers are still being processed.
  - We anticipate these will be done by mid-September.
- 2026 flight planning started
  - Kick-off meeting planned for Early October.

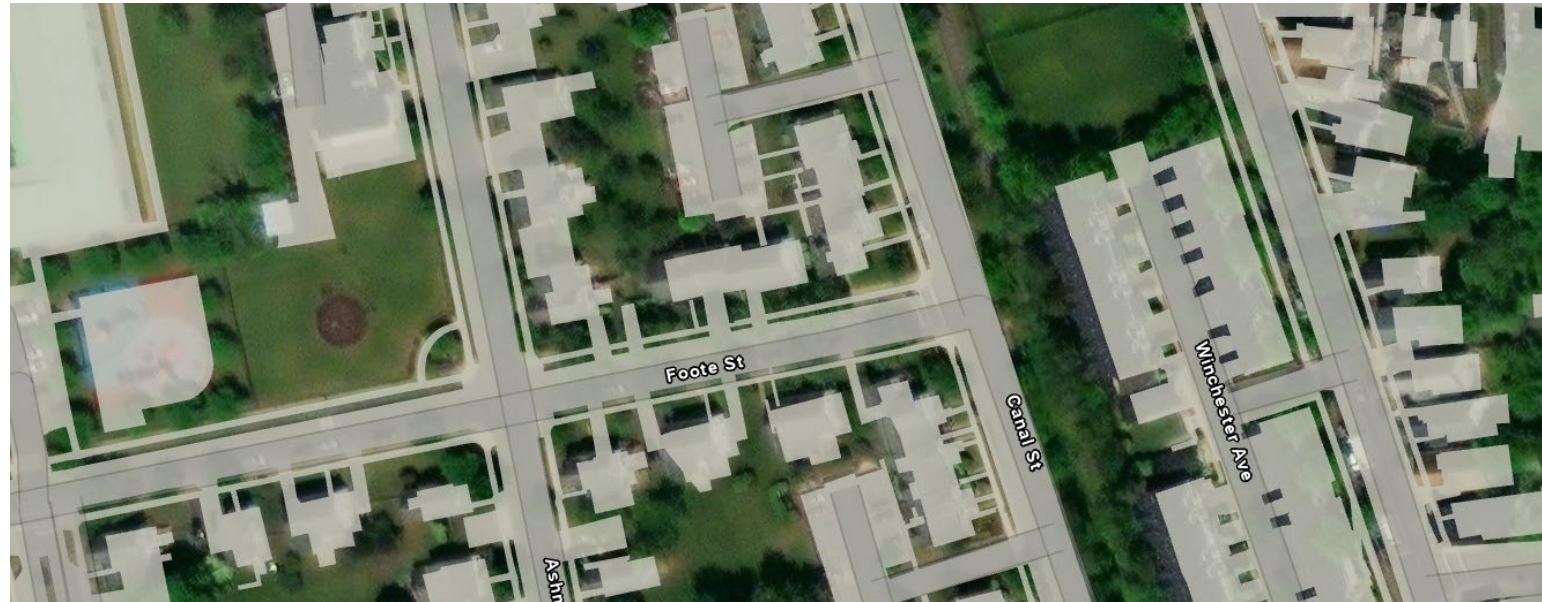


# IC Sample Data

## Impervious Cover

Driveways, roads,  
sidewalks, etc.

Buildings being compared  
against Dewberry's





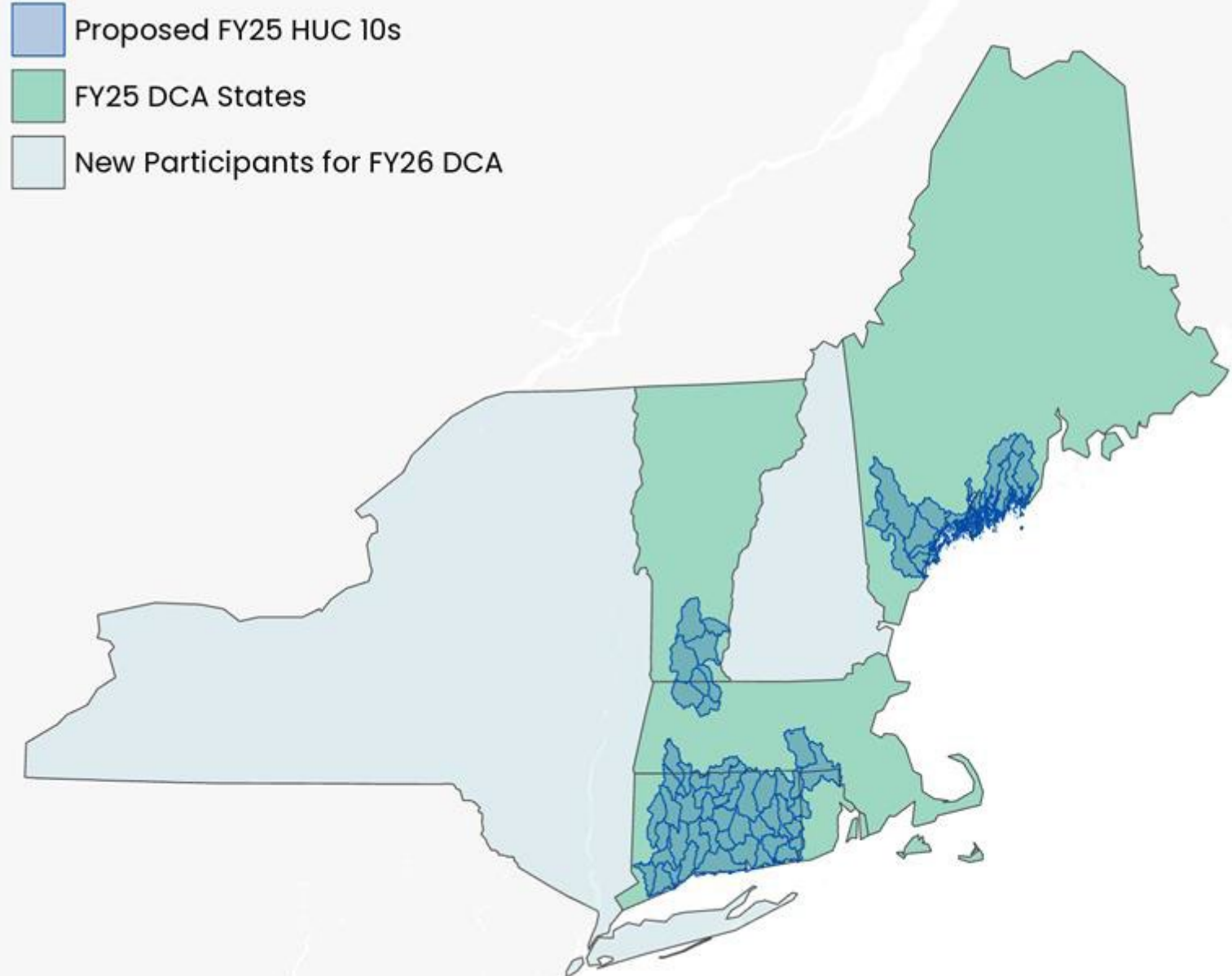
# The New England 3DHP Regional Partnership

FY 25 DCA not funded.

New additional partners for FY26.

- CT, RI, MA, VT, ME, NH, NY

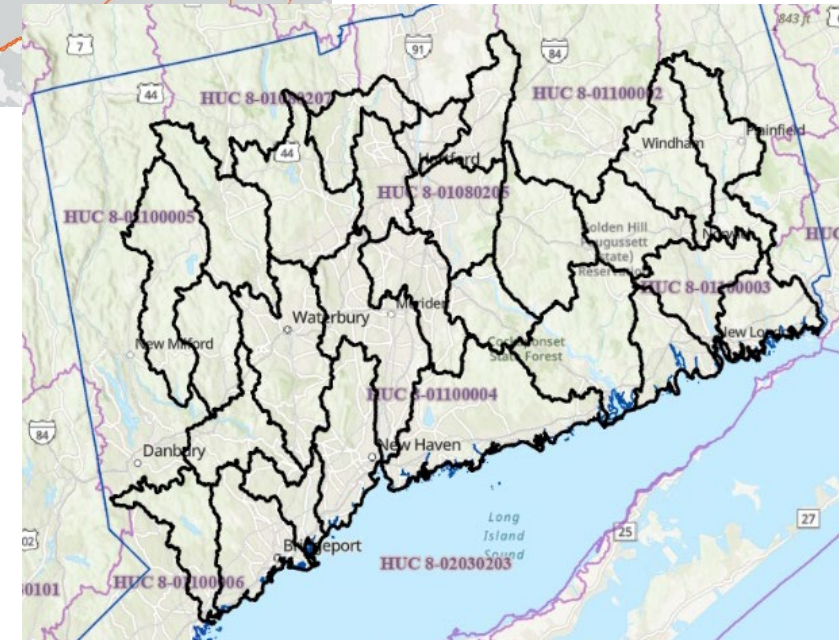
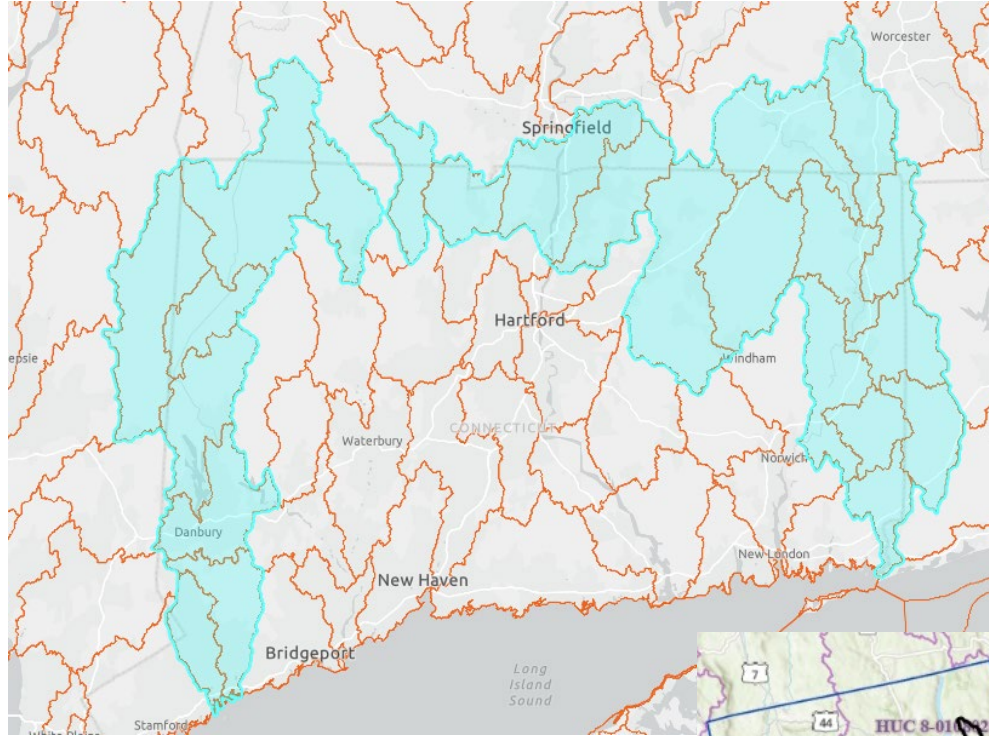
Modified focus for CT joint submission.



# CT's FY26 3DHP DCA Proposals

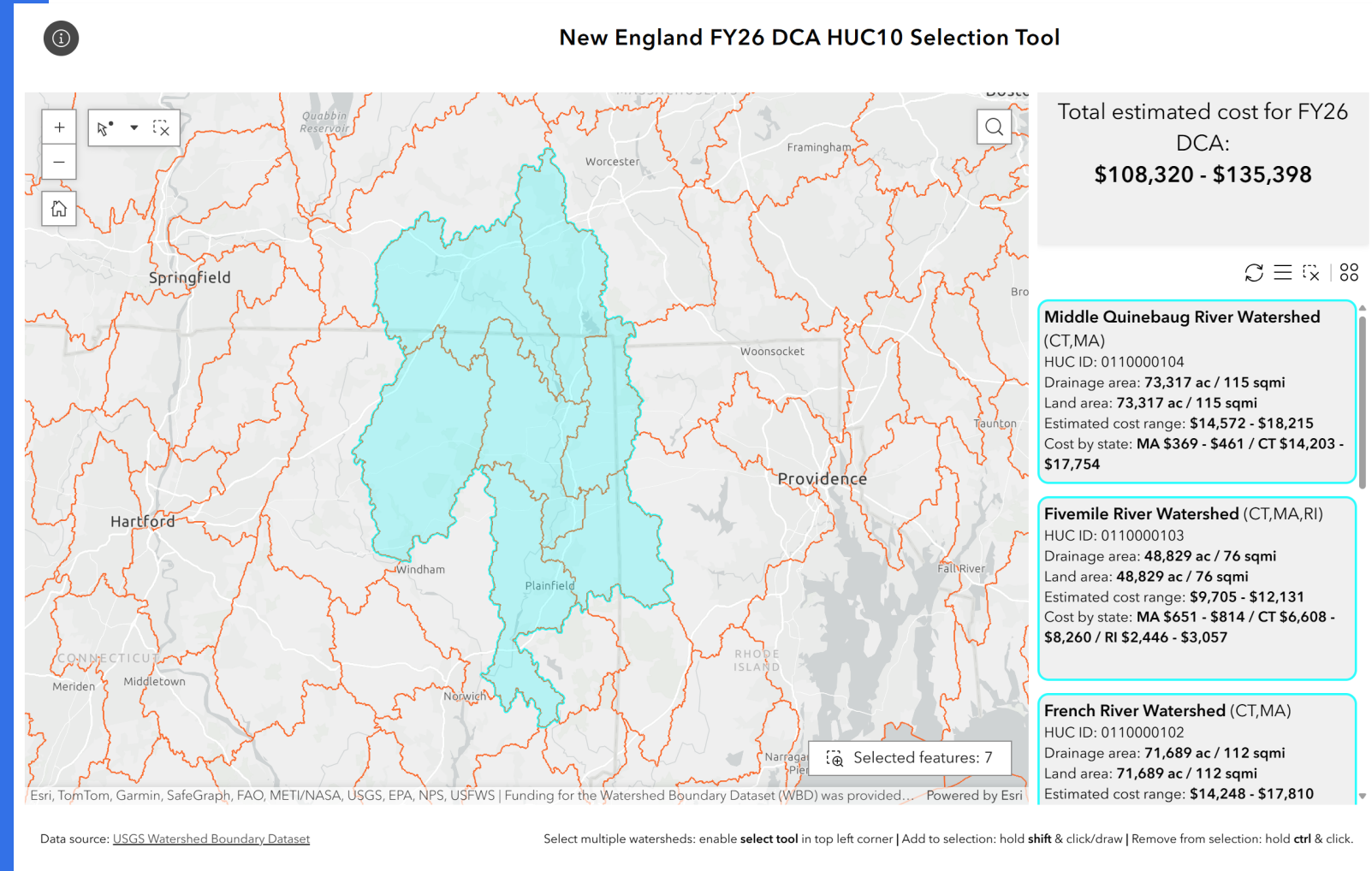
CT is submitting two  
DCAs

- One with the New England Consortium
- A second one for CT-only HUCs.



# DCA Watershed Selection Tool

- Tool for selecting one or more watersheds to view estimated data acquisition costs and key watershed details
- Breakdown by state based on each state's share of the watershed and also excluding open water.





# 3DHP will support Culverts and Bridges Req.

- Public Act No. 25-33
- AN ACT CONCERNING THE ENVIRONMENT, CLIMATE AND SUSTAINABLE MUNICIPAL AND STATE PLANNING, AND THE USE OF NEONICOTINOIDS AND SECOND-GENERATION ANTICOAGULANT RODENTICIDES
- Some existing data framework / schemas such as CT DOT and BLM

Sec. 8. (NEW) (*Effective July 1, 2025*) On or before May 1, 2028, and annually thereafter, each municipality shall submit a geospatial data file of each **culvert** and bridge within the control and boundaries of such municipality to the regional council of governments of which it is a member in a form and manner prescribed by the Office of Policy and Management, in consultation with the Departments of Transportation and Energy and Environmental Protection. Such geospatial data shall be produced and provided in the plane coordinate system, as described in section 13a-255 of the general statutes. Such data file shall include, but need not be limited to, geospatial data pertaining to each **culvert** and bridge, the locational coordinates of each **culvert** and bridge, the age and dimensions of each **culvert** and bridge and any additional information deemed necessary by the Office of Policy and Management, in



SCIENCE PRODUCTS NEWS CONNECT ABOUT

PUBLICATIONS | CONFERENCE PAPERS

## Automated mapping of culverts, bridges, and dams

August 11, 2023

Accurate maps of built structures around stream channels, such as dams, culverts, and bridges, are vital in monitoring infrastructure, risk management, and hydrologic modeling. Hydrologic modeling is essential for research and

A decorative graphic on the left side of the slide, consisting of white, wavy, concentric lines that resemble a topographic map or contour lines, set against a solid blue background.

# Public Comment



# Thank You